

L.V. BEETHOVEN



W.A. MOZART



NOTENHEFT

F. SCHUBERT



J. HAYDN



J. STRAUSS



MADE IN AUSTRIA

Variationen

über ein Thema v. J.S. Bach

im alten Stil

für Orgel

1971

Adolf Strömberg

Große Weisheit hat keine
äußere Form. Wertvolle
Dinge können nicht rasch
vollendet werden.
Edle Töne erklingen nur
selten.

(Lü Bu We)

sehr breit - (Trauer)

Lento

Handwritten musical notation for the first system. It consists of a treble clef and a bass clef. The time signature is 6/4. A circled key signature indicates two sharps (F# and C#). The treble staff contains a melodic line with a slur over the first two measures. The bass staff contains a bass line with chords and a few notes.

Handwritten musical notation for the second system. It continues the piece with complex chordal textures in both staves. The treble staff has a melodic line with slurs, and the bass staff has a bass line with chords and a few notes.

Handwritten musical notation for the third system. It shows further development of the melodic and harmonic material. The treble staff has a melodic line with slurs, and the bass staff has a bass line with chords and a few notes.

Handwritten musical notation for the fourth system. It concludes the piece with a final melodic phrase in the treble and a sustained bass line in the bass. The treble staff has a melodic line with slurs, and the bass staff has a bass line with chords and a few notes.

(2/4 + rit)

Handwritten musical notation for the first system, consisting of two staves. The top staff is in treble clef and the bottom in bass clef. The music features a melody with eighth and sixteenth notes, some beamed together, and rests. The bass line consists of quarter notes. The key signature has one flat (B-flat).

(2/4 + rit)

Handwritten musical notation for the second system, consisting of two staves. The top staff is in treble clef and the bottom in bass clef. The music concludes with a double bar line and a "FINE" sign. The word "Lunga" is written below the second staff. The notation includes a fermata over the final note of the melody.

1

Andante

Handwritten musical notation for the first system. It consists of two staves: a treble clef staff on top and a bass clef staff on the bottom. The treble staff begins with a circled 'P' and contains a series of notes with a slur over them. The bass staff contains a few notes with a slur. The system ends with a double bar line.

Handwritten musical notation for the second system. It consists of two staves. The treble staff has several measures with notes and slurs. The bass staff has notes with slurs and some accidentals. The system ends with a double bar line.

Handwritten musical notation for the third system. It consists of two staves. The treble staff has notes with slurs and some accidentals. The bass staff has notes with slurs and some accidentals. The system ends with a double bar line.

Handwritten musical notation for the fourth system. It consists of two staves. The treble staff has notes with slurs and a triplet of notes. The bass staff has notes with slurs and some accidentals. The system ends with a double bar line.

Handwritten musical notation for the first system. The top staff is in treble clef and the bottom staff is in bass clef. The music consists of two measures. The first measure has a treble staff with a melodic line and a bass staff with a bass line. The second measure has a treble staff with a melodic line and a bass staff with a bass line and chord symbols: d , b , and $\frac{bd}{b9}$.

(2/4 + 2/4)

Handwritten musical notation for the second system. The top staff is in treble clef and the bottom staff is in bass clef. The music consists of two measures. The first measure has a treble staff with a melodic line and a bass staff with a bass line. The second measure has a treble staff with a melodic line and a bass staff with a bass line and chord symbols: d , $\frac{d}{9}$, and $\frac{d}{9}$.

2

Andante

Handwritten musical notation for the first system. It features a treble clef and a circled 'P' dynamic marking. The time signature is 4/4. The melody consists of eighth notes, and the bass line features chords. A slur covers the first two measures.

Handwritten musical notation for the second system. It features a treble clef. The melody continues with a slur over the first two measures. The bass line has chords. The key signature changes to one sharp (F#) in the second measure.

Handwritten musical notation for the third system. It features a treble clef. The melody continues with a slur over the first two measures. The bass line has chords.

Handwritten musical notation for the first system. The treble clef staff contains a sequence of notes: a whole note G4, a quarter note A4, a quarter note B4, a quarter note C5, a quarter note D5, a quarter note E5, a quarter note F5, a quarter note G5, a quarter note A5, and a quarter note B5. A slur covers the last five notes. The bass clef staff begins with a whole note G2, followed by a whole rest. A slur covers the last two notes: a quarter note G2 and a quarter note A2.

Handwritten musical notation for the second system. The treble clef staff contains a sequence of notes: a whole note G4, a quarter note A4, a quarter note B4, a quarter note C5, a quarter note D5, a quarter note E5, a quarter note F5, a quarter note G5, a quarter note A5, and a quarter note B5. A slur covers the last five notes. The bass clef staff begins with a whole note G2, followed by a whole rest. A slur covers the last two notes: a quarter note G2 and a quarter note A2.

Handwritten musical notation for the third system. The treble clef staff contains a sequence of notes: a whole note G4, a quarter note A4, a quarter note B4, a quarter note C5, a quarter note D5, a quarter note E5, a quarter note F5, a quarter note G5, a quarter note A5, and a quarter note B5. A slur covers the last five notes. The bass clef staff begins with a whole note G2, followed by a whole rest. A slur covers the last two notes: a quarter note G2 and a quarter note A2.

Handwritten musical notation for the fourth system. The treble clef staff contains a sequence of notes: a whole note G4, a quarter note A4, a quarter note B4, a quarter note C5, a quarter note D5, a quarter note E5, a quarter note F5, a quarter note G5, a quarter note A5, and a quarter note B5. A slur covers the last five notes. The bass clef staff begins with a whole note G2, followed by a whole rest. A slur covers the last two notes: a quarter note G2 and a quarter note A2.

Handwritten musical notation for the first system. The treble clef staff contains a sequence of notes: G4, A4, B4, C5, B4, A4, G4, with a slur over the first four notes. The bass clef staff contains a whole note chord G3-B2 and a whole note chord G3-B2. A bar line is present after the second measure.

Handwritten musical notation for the second system. The treble clef staff has a half note G4 and a quarter note A4, with a slur over them. The bass clef staff has a sequence of notes: G4, A4, B4, C5, B4, A4, G4, with a slur over the entire line. A bar line is present after the second measure.

Handwritten musical notation for the third system. The treble clef staff has a half note G4, a quarter note A4, and a quarter note B4, with a slur over them. The bass clef staff has a half note G3 and a quarter note A3, with a slur over them. A key signature change to one sharp (F#) is indicated in the second measure. A bar line is present after the second measure.

Handwritten musical notation for the fourth system. The treble clef staff has a sequence of notes: G4, A4, B4, C5, B4, A4, G4, with a slur over the first four notes. The bass clef staff has a sequence of notes: G3, A3, B3, C4, B3, A3, G3, with a slur over the first four notes. The system ends with a double bar line and a repeat sign.

breit (aber nicht schleppend) ③

Handwritten musical notation for the first system. It consists of two staves: a treble clef staff and a bass clef staff. The time signature is 3/4. The first measure of the treble staff has a circled 'ff' and a '3' above it. The first measure of the bass staff has a '4' below it. A large slur covers the first two measures of the treble staff. The second measure of the bass staff has the word 'ritato' written below it.

Handwritten musical notation for the second system. It consists of two staves: a treble clef staff and a bass clef staff. The treble staff has a series of notes with a slur over them. The bass staff has a few notes and rests.

Handwritten musical notation for the third system. It consists of two staves: a treble clef staff and a bass clef staff. The treble staff has a few notes and rests. The bass staff has a series of notes with a slur over them.

Handwritten musical notation for the fourth system. It consists of two staves: a treble clef staff and a bass clef staff. The time signature is 3/4. A large slur covers the first two measures of the treble staff. The bass staff has a few notes and rests.

Handwritten musical notation for the first system. The treble clef staff contains a key signature of one sharp (F#) and a 3/4 time signature. It features a half note G4, a quarter note A4, and a quarter note B4. The bass clef staff contains a half note G2, a quarter note A2, and a quarter note B2. The system concludes with a double bar line.

Handwritten musical notation for the second system. The treble clef staff has a circled melodic line consisting of a quarter note G4, a quarter note A4, and a quarter note B4. The bass clef staff has a circled accompaniment line consisting of a half note G2 and a quarter note A2. The system concludes with a double bar line.

Handwritten musical notation for the third system. The treble clef staff has a circled melodic line consisting of a quarter note G4, a quarter note A4, and a quarter note B4. The bass clef staff has a circled accompaniment line consisting of a half note G2 and a quarter note A2. The system concludes with a double bar line.

Handwritten musical notation for the fourth system. The treble clef staff has a circled melodic line consisting of a quarter note G4, a quarter note A4, and a quarter note B4. The bass clef staff has a circled accompaniment line consisting of a half note G2 and a quarter note A2. The system concludes with a double bar line.

Handwritten musical notation for the first system. The top staff contains a sequence of notes: a half note G4, a quarter note A4, a quarter note B4, a quarter note C5, a quarter note B4, a quarter note A4, a quarter note G4, and a quarter rest. The bottom staff contains a half note G3, a quarter note A3, a quarter note B3, a quarter note C4, a quarter note B3, a quarter note A3, a quarter note G3, and a quarter rest. Both staves have a treble clef and a key signature of one flat (Bb).

Handwritten musical notation for the second system. The top staff contains a half note G4, a quarter note A4, a quarter note B4, a quarter note C5, a quarter note B4, a quarter note A4, a quarter note G4, and a quarter rest. The bottom staff contains a half note G3, a quarter note A3, a quarter note B3, a quarter note C4, a quarter note B3, a quarter note A3, a quarter note G3, and a quarter rest. Both staves have a treble clef and a key signature of one flat (Bb).

Handwritten musical notation for the third system. The top staff contains a half note G4, a quarter note A4, a quarter note B4, a quarter note C5, a quarter note B4, a quarter note A4, a quarter note G4, and a quarter rest. The bottom staff contains a half note G3, a quarter note A3, a quarter note B3, a quarter note C4, a quarter note B3, a quarter note A3, a quarter note G3, and a quarter rest. Both staves have a treble clef and a key signature of one flat (Bb).

Handwritten musical notation for the fourth system. The top staff contains a half note G4, a quarter note A4, a quarter note B4, a quarter note C5, a quarter note B4, a quarter note A4, a quarter note G4, and a quarter rest. The bottom staff contains a half note G3, a quarter note A3, a quarter note B3, a quarter note C4, a quarter note B3, a quarter note A3, a quarter note G3, and a quarter rest. Both staves have a treble clef and a key signature of one flat (Bb).

(zta + rit)

Allegro con brio

4

Handwritten musical notation for the first system. The left staff is in treble clef with a circled '4' and a sharp sign. The right staff is in bass clef with a flat sign and a sharp sign. Both staves contain musical notes with stems and beams.

Handwritten musical notation for the second system. The left staff is in treble clef. The right staff is in bass clef with a flat sign. Both staves contain musical notes with stems and beams.

Handwritten musical notation for the third system. The left staff is in treble clef with a sharp sign. The right staff is in bass clef with a sharp sign. Both staves contain musical notes with stems and beams.

Handwritten musical notation for the fourth system. The left staff is in treble clef. The right staff is in bass clef with a sharp sign. Both staves contain musical notes with stems and beams.

Handwritten musical notation on a grand staff. The right hand (treble clef) has a key signature of one sharp (F#) and a time signature of 3/4. It features a melodic line with a slur over the first two measures and a fermata over the second measure. The left hand (bass clef) has a key signature of one sharp and a time signature of 3/4, with a single note in the first measure and a fermata in the second measure.

Handwritten musical notation on a grand staff. The right hand (treble clef) has a key signature of one flat (Bb) and a time signature of 3/4. It features a melodic line with a slur over the first two measures and a fermata over the second measure. The left hand (bass clef) has a key signature of one flat and a time signature of 3/4, with a single note in the first measure and a fermata in the second measure.

Handwritten musical notation on a grand staff. The right hand (treble clef) has a key signature of one flat (Bb) and a time signature of 3/4. It features a melodic line with a slur over the first two measures and a fermata over the second measure. The left hand (bass clef) has a key signature of one flat and a time signature of 3/4, with a single note in the first measure and a fermata in the second measure.

Handwritten musical notation on a grand staff. The right hand (treble clef) has a key signature of one flat (Bb) and a time signature of 3/4. It features a melodic line with a slur over the first two measures and a fermata over the second measure. The left hand (bass clef) has a key signature of one flat and a time signature of 3/4, with a single note in the first measure and a fermata in the second measure.

5

Adagio

Handwritten musical notation for the first system. The treble clef staff begins with a treble clef, a key signature of one sharp (F#), and a 6/8 time signature. The bass clef staff begins with a bass clef, a key signature of one sharp (F#), and a 4/8 time signature. The notation includes various note values, rests, and dynamic markings such as 'p'.

Handwritten musical notation for the second system. The treble clef staff continues with notes and rests. The bass clef staff features a series of chords and notes. The notation includes various note values, rests, and dynamic markings.

Handwritten musical notation for the third system. The treble clef staff continues with notes and rests. The bass clef staff features a series of chords and notes. The notation includes various note values, rests, and dynamic markings.

(Zweit)

2.

6

(1+ mf
2+ ff
3+ f

Allegro con brio

Handwritten musical notation for the first system, measures 12 and 16. The system consists of two staves. The first staff is in treble clef and the second in bass clef. Both staves are marked with a piano (p) dynamic. Measure 12 contains a melodic line in the treble staff and a bass line in the bass staff. Measure 16 contains a melodic line in the bass staff and a bass line in the bass staff. A large slur covers both measures across both staves.

Handwritten musical notation for the second system, measures 12 and 16. The system consists of two staves. The first staff is in treble clef and the second in bass clef. Both staves are marked with a piano (p) dynamic. Measure 12 contains a melodic line in the treble staff and a bass line in the bass staff. Measure 16 contains a melodic line in the treble staff and a bass line in the bass staff. A large slur covers both measures across both staves.

Handwritten musical notation for the third system, measures 12 and 16. The system consists of two staves. The first staff is in treble clef and the second in bass clef. Both staves are marked with a piano (p) dynamic. Measure 12 contains a melodic line in the treble staff and a bass line in the bass staff. Measure 16 contains a melodic line in the treble staff and a bass line in the bass staff. A large slur covers both measures across both staves.

Handwritten musical notation for the first system. The treble staff contains a series of beamed eighth notes, while the bass staff features a similar rhythmic pattern with some rests. A key signature change to one sharp (F#) is indicated at the beginning of the second measure.

Handwritten musical notation for the second system. The treble staff has a melodic line with a slur over the first two measures. The bass staff provides a supporting line with a similar rhythmic structure.

Handwritten musical notation for the third system. The treble staff contains a melodic line with a slur, and the bass staff has a supporting line with a similar rhythmic pattern.

Handwritten musical notation for the fourth system. The treble staff has a melodic line with a slur, and the bass staff provides a supporting line with a similar rhythmic structure.

Handwritten musical notation for the first system. The top staff is in treble clef and contains a melodic line with a slur over the first four notes and an accent mark above the fifth. The bottom staff is in bass clef and contains a bass line with a slur over the first four notes.

letzte + sat

Handwritten musical notation for the second system. The top staff is in treble clef and contains a melodic line with a slur over the first two notes. The bottom staff is in bass clef and contains a bass line with a slur over the first four notes. There are some handwritten annotations below the notes in the first measure of both staves.

7

f *trai* (alla Fantasia)

rubato **ff**

4/4

rubato *trai*

rit.

rit.

breit (rit)

(fain) subito

breit

(subito) — rit

breit

Andante *Andante*

Handwritten musical notation for the first system. It consists of a treble clef staff and a bass clef staff. The treble staff begins with a key signature of one flat (B-flat) and a 3/4 time signature. A large slur encompasses a complex chordal passage in the treble staff, with some notes beamed together. The bass staff has a few notes, including a B-flat and a G, with a slur underneath.

Andante

Handwritten musical notation for the second system. It consists of a treble clef staff and a bass clef staff. The treble staff begins with a 4/4 time signature. A large slur covers a melodic line in the treble staff. The bass staff has a few notes, including a B-flat and a G, with a slur underneath.

Andante

Handwritten musical notation for the third system. It consists of a treble clef staff and a bass clef staff. The treble staff begins with a 4/4 time signature. A large slur covers a melodic line in the treble staff. The bass staff has a few notes, including a B-flat and a G, with a slur underneath.

attacca

Handwritten musical notation for the fourth system. It consists of a treble clef staff and a bass clef staff. The treble staff begins with a 4/4 time signature. A large slur covers a melodic line in the treble staff. The bass staff has a few notes, including a B-flat and a G, with a slur underneath.

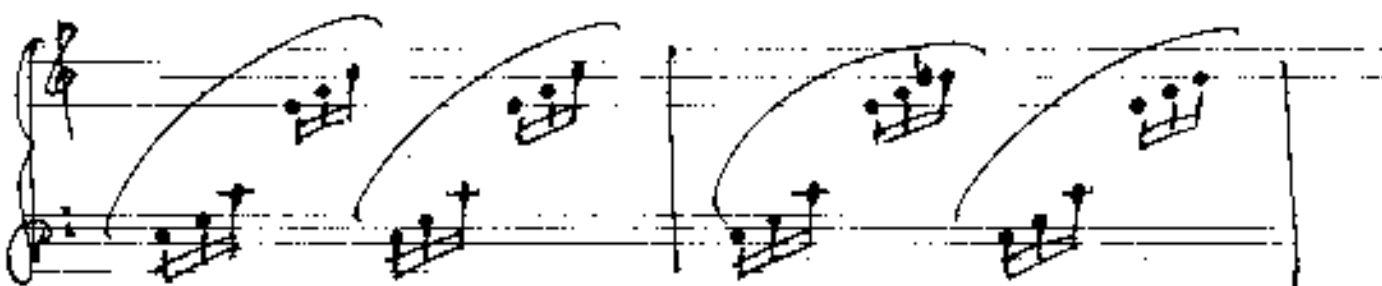
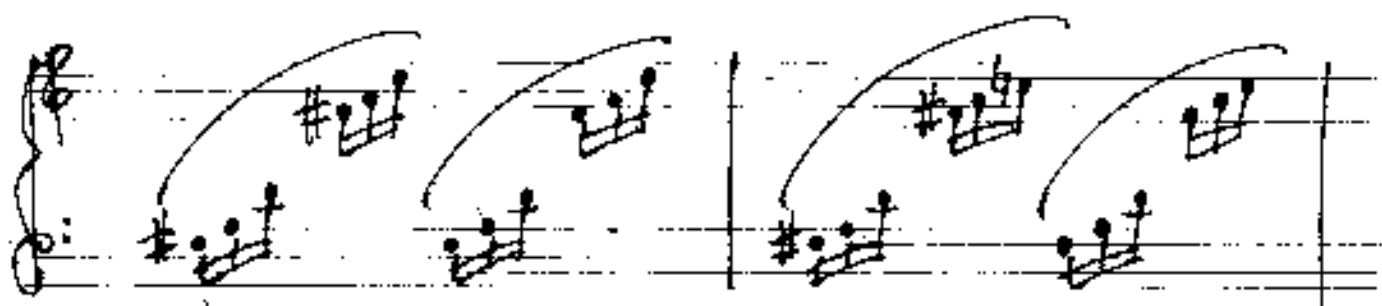
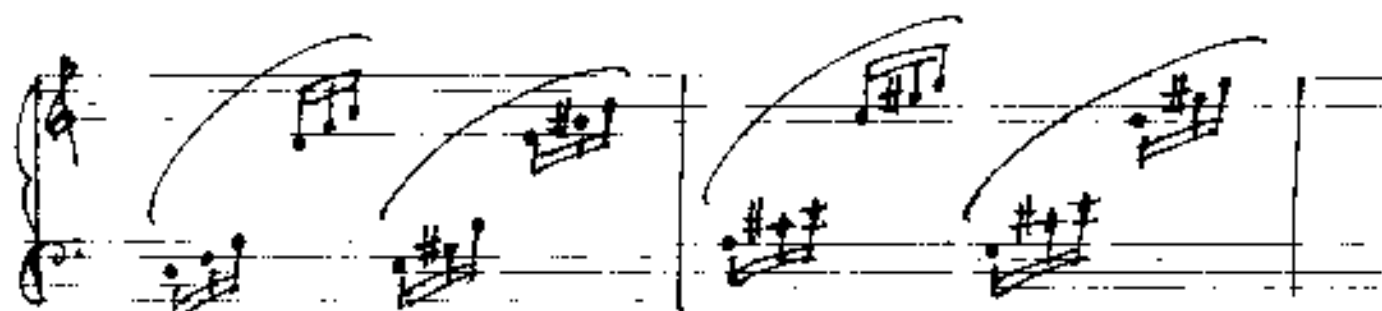
Presto

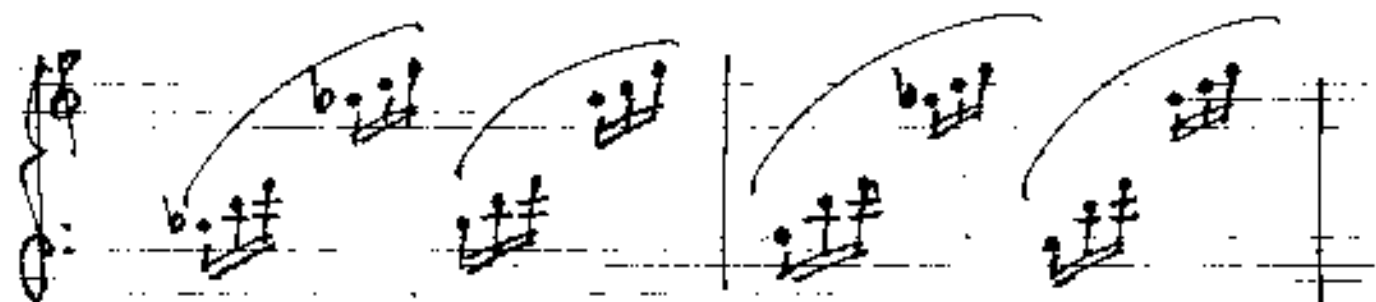
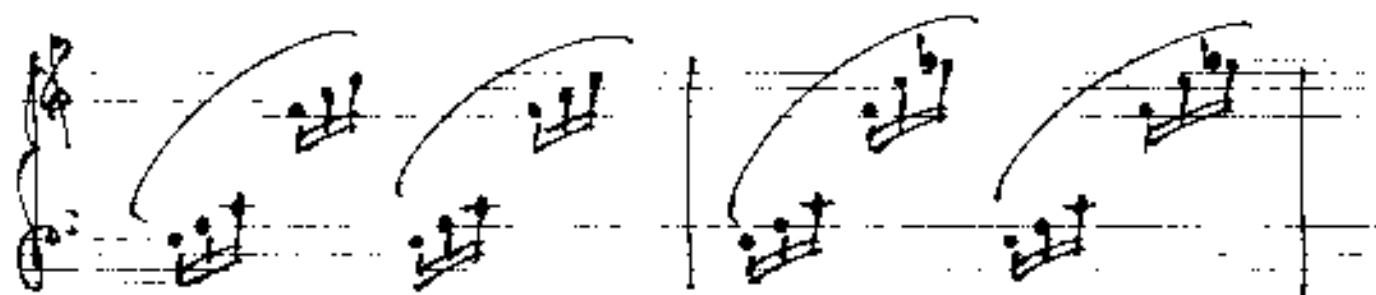
Handwritten musical notation for the first system, measures 12 and 16. The notation is in treble clef with a key signature of one sharp (F#). Measure 12 contains two groups of beamed eighth notes, each with a slur above it. Measure 16 contains two groups of beamed eighth notes, each with a slur above it. The notes in measure 16 are higher in pitch than those in measure 12.

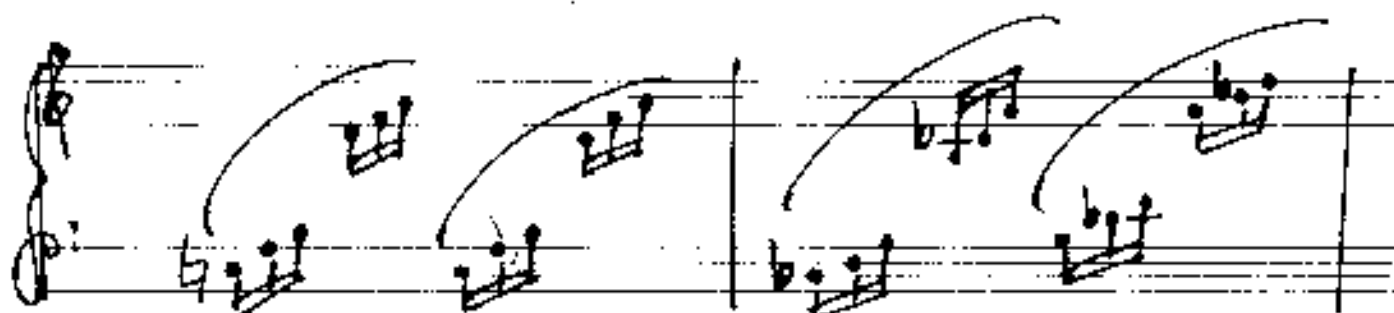
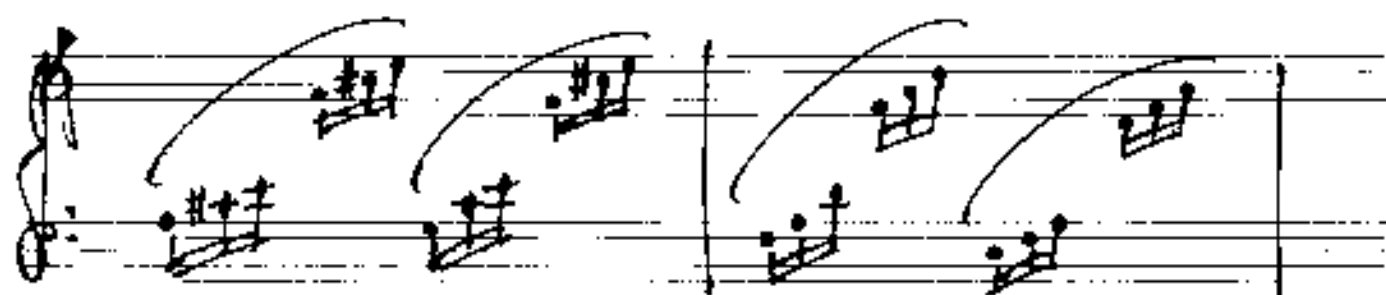
Handwritten musical notation for the second system, measures 13 and 14. The notation is in treble clef with a key signature of one sharp (F#). Measure 13 contains two groups of beamed eighth notes, each with a slur above it. Measure 14 contains two groups of beamed eighth notes, each with a slur above it. The notes in measure 14 are higher in pitch than those in measure 13.

Handwritten musical notation for the third system, measures 15 and 17. The notation is in treble clef with a key signature of one sharp (F#). Measure 15 contains two groups of beamed eighth notes, each with a slur above it. Measure 17 contains two groups of beamed eighth notes, each with a slur above it. The notes in measure 17 are higher in pitch than those in measure 15.

Handwritten musical notation for the fourth system, measures 18 and 19. The notation is in treble clef with a key signature of one sharp (F#). Measure 18 contains two groups of beamed eighth notes, each with a slur above it. Measure 19 contains two groups of beamed eighth notes, each with a slur above it. The notes in measure 19 are higher in pitch than those in measure 18.

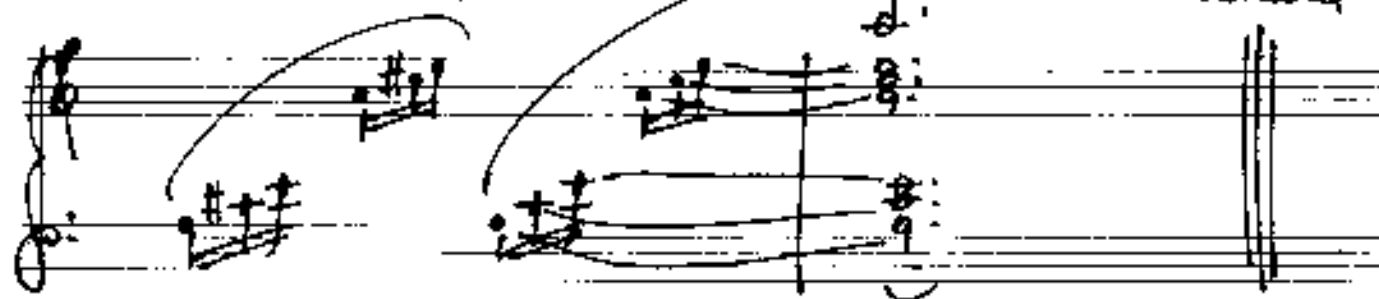






poco rit

*for
alluvio*



*Da capo
(Thema)
No. 1. al
Fine*

*1844
Adolf Schubert*