

L.v. BEETHOVEN



W.A. MOZART



NOTENHEFT

F. SCHUBERT



J. HAYDN



J. STRAUSS



MADE IN AUSTRIA

Variationen

über ein Thema v. J.S. Bach

im alten Stil —

für Orgel

1971

Adolf Scherbaum

(Große Weisheit hat keine
äußere Form. Wertvolle
Dinge können nicht rasch
vollendet werden.
Edle Töne erklingen nur
selten.)

(Lü Bu We)

(26 + mit)

Handwritten musical notation for the first system, consisting of two staves. The top staff is in treble clef and the bottom in bass clef. The music features a melodic line with eighth and sixteenth notes, and a bass line with chords and eighth notes. There are some handwritten annotations like 'q' and 'bd' below the bass line.

(26 + mit)

Handwritten musical notation for the second system, consisting of two staves. The top staff is in treble clef and the bottom in bass clef. The music concludes with a double bar line and a box containing the word "FINE". Below the second staff, the word "Lunga" is written.

1

Andante

Handwritten musical notation for the first system. The treble staff begins with a circled 'P' (piano) dynamic marking. The music consists of two measures. The first measure has a whole rest in the treble and a quarter note in the bass. The second measure features a melodic line in the treble and a bass line in the bass, both connected by a slur.

Handwritten musical notation for the second system, consisting of two measures. The first measure shows a melodic phrase in the treble and a bass line with a sharp sign (^) above a note. The second measure continues the melodic development in the treble and includes a sharp sign (^) above a note in the bass.

Handwritten musical notation for the third system, consisting of two measures. The first measure includes a melodic line with a fermata and a bass line with a sharp sign (^) above a note. The second measure features a melodic line with a fermata and a bass line with a sharp sign (^) above a note.

Handwritten musical notation for the fourth system, consisting of two measures. The first measure includes a triplet of eighth notes in the treble and a bass line with a sharp sign (^) above a note. The second measure features a melodic line with a fermata and a bass line with a sharp sign (^) above a note.

Handwritten musical notation for the first system, consisting of two staves. The top staff is in treble clef and the bottom in bass clef. The music features a melodic line with eighth and sixteenth notes, and a bass line with chords and some melodic fragments. There are some annotations like '9' and 'bd' below the bass staff.

(2te mit)

Handwritten musical notation for the second system, consisting of two staves. The top staff is in treble clef and the bottom in bass clef. The music features a melodic line with eighth notes and a bass line with chords. There are some annotations like '#+' and '9' below the bass staff.

Five sets of empty musical staves, each consisting of two lines, arranged vertically on the page.

2

Andante

Handwritten musical notation for the first system. It consists of two staves. The top staff is in treble clef and the bottom staff is in bass clef. The time signature is 4/4. A circled 'p' indicates a piano dynamic. The melody in the treble clef starts with a quarter rest, followed by a series of eighth and sixteenth notes, all under a slur. The bass clef staff contains a series of chords, including a triad and a dyad, with a fermata over the final chord.

Handwritten musical notation for the second system. It consists of two staves. The top staff is in treble clef and the bottom staff is in bass clef. The melody in the treble clef continues with a slur and includes a sharp sign (#) on the final note. The bass clef staff contains chords, with a fermata over the final chord.

Handwritten musical notation for the third system. It consists of two staves. The top staff is in treble clef and the bottom staff is in bass clef. The melody in the treble clef has a slur and a fermata over the final note. The bass clef staff contains a melodic line with eighth and sixteenth notes, all under a slur.

Handwritten musical notation for the first system. The treble clef staff contains a melodic line with a slur over the first two measures and a fermata over the second measure. The bass clef staff contains a bass line with a slur over the first two measures and a fermata over the second measure. The notation includes various notes, rests, and accidentals.

Handwritten musical notation for the second system. The treble clef staff contains a melodic line with a slur over the first two measures and a fermata over the second measure. The bass clef staff contains a bass line with a slur over the first two measures and a fermata over the second measure. The notation includes various notes, rests, and accidentals.

Handwritten musical notation for the third system. The treble clef staff contains a melodic line with a slur over the first two measures and a fermata over the second measure. The bass clef staff contains a bass line with a slur over the first two measures and a fermata over the second measure. The notation includes various notes, rests, and accidentals.

Handwritten musical notation for the fourth system. The treble clef staff contains a melodic line with a slur over the first two measures and a fermata over the second measure. The bass clef staff contains a bass line with a slur over the first two measures and a fermata over the second measure. The notation includes various notes, rests, and accidentals.

Handwritten musical notation for the first system. The treble staff begins with a treble clef and a wavy line above the first note. The bass staff starts with a bass clef. The system contains three measures of music with various note values and rests.

Handwritten musical notation for the second system. The treble staff continues with a treble clef. The bass staff continues with a bass clef. The system contains three measures of music.

Handwritten musical notation for the third system. The treble staff continues with a treble clef. The bass staff continues with a bass clef. The system contains three measures of music.

Handwritten musical notation for the first system. The treble clef staff contains a melodic line with a dotted quarter note, an eighth note, and a quarter note, followed by a half note. The bass clef staff contains a dotted quarter note and a half note. The system concludes with a double bar line.

Handwritten musical notation for the second system. The treble clef staff continues the melodic line with a dotted quarter note and a half note. The bass clef staff features a more complex rhythmic pattern with eighth and sixteenth notes. The system concludes with a double bar line.

Handwritten musical notation for the third system. The treble clef staff has a dotted quarter note, a half note, and a quarter note. The bass clef staff has a dotted quarter note and a half note. The system concludes with a double bar line.

Handwritten musical notation for the fourth system. The treble clef staff has a dotted quarter note, a half note, and a quarter note. The bass clef staff has a dotted quarter note and a half note. The system concludes with a double bar line and a fermata over the final notes.

3

breit (aber nicht schleppend)

(frei - - rubato)

Handwritten musical notation for the first system. The treble clef staff begins with a key signature of one sharp (F#) and a common time signature (C). The first measure contains a whole note chord (F#4, A4, C5) followed by a whole rest. The second measure contains a whole note chord (D4, F#4, A4). The third measure contains a whole note chord (D4, F#4, A4) with a fermata. The fourth measure contains a quarter note (D4) and a quarter note (F#4). The bass clef staff contains a series of chords: a quarter note (F#4) and a quarter note (A4) in the first measure; a quarter note (D4) and a quarter note (F#4) in the second measure; a quarter note (D4) and a quarter note (F#4) in the third measure; and a quarter note (D4) and a quarter note (F#4) in the fourth measure.

Handwritten musical notation for the second system. The treble clef staff contains a half note (D4) in the first measure, a whole rest in the second measure, and a half note (D4) in the third measure. The bass clef staff contains a series of chords: a quarter note (D4) and a quarter note (F#4) in the first measure; a quarter note (D4) and a quarter note (F#4) in the second measure; a quarter note (D4) and a quarter note (F#4) in the third measure; and a quarter note (D4) and a quarter note (F#4) in the fourth measure.

Handwritten musical notation for the third system. The treble clef staff contains a half note (D4) in the first measure, a half note (D4) in the second measure, and a half note (D4) in the third measure. The bass clef staff contains a series of chords: a quarter note (D4) and a quarter note (F#4) in the first measure; a quarter note (D4) and a quarter note (F#4) in the second measure; a quarter note (D4) and a quarter note (F#4) in the third measure; and a quarter note (D4) and a quarter note (F#4) in the fourth measure.

Handwritten musical notation for the fourth system. The treble clef staff contains a half note (D4) in the first measure, a half note (D4) in the second measure, and a half note (D4) in the third measure. The bass clef staff contains a series of chords: a quarter note (D4) and a quarter note (F#4) in the first measure; a quarter note (D4) and a quarter note (F#4) in the second measure; a quarter note (D4) and a quarter note (F#4) in the third measure; and a quarter note (D4) and a quarter note (F#4) in the fourth measure.

(2te + rit)

Allegro con brio (4)

Handwritten musical notation for the first system. The treble clef staff contains a melodic line with a slur over the first four measures. The bass clef staff has a whole rest in the first measure. The second measure of the bass staff begins with a treble clef and contains a melodic line with a slur. The system concludes with a double bar line.

Handwritten musical notation for the second system. The treble clef staff contains a melodic line with a slur over the first four measures. The bass clef staff has a whole rest in the first measure. The second measure of the bass staff begins with a treble clef and contains a melodic line with a slur. The system concludes with a double bar line.

Handwritten musical notation for the third system. The treble clef staff contains a melodic line with a slur over the first four measures. The bass clef staff has a whole rest in the first measure. The second measure of the bass staff begins with a treble clef and contains a melodic line with a slur. The system concludes with a double bar line.

Handwritten musical notation for the fourth system. The treble clef staff contains a melodic line with a slur over the first four measures. The bass clef staff has a whole rest in the first measure. The second measure of the bass staff begins with a treble clef and contains a melodic line with a slur. The system concludes with a double bar line.

Handwritten musical notation for the first system, featuring a treble and bass staff with a key signature of one sharp (F#) and a common time signature (C). The treble staff contains a melodic line with a long slur over two measures, while the bass staff has a few notes and rests.

Handwritten musical notation for the second system, continuing the piece with treble and bass staves. The treble staff has a melodic line with a slur, and the bass staff has a more active line with slurs.

Handwritten musical notation for the third system, showing treble and bass staves with complex melodic and harmonic structures.

Handwritten musical notation for the fourth system, featuring treble and bass staves with intricate melodic patterns.

(Zweiter Satz)

5

Adagio

Handwritten musical notation for the first system of 'Adagio'. The system consists of two staves. The upper staff is in treble clef with a 6/8 time signature. The lower staff is in bass clef with a 4/8 time signature. The music features a melodic line in the upper staff and a more rhythmic accompaniment in the lower staff, with various accidentals and phrasing slurs.

Handwritten musical notation for the second system of 'Adagio'. The system consists of two staves. The upper staff is in treble clef and the lower staff is in bass clef. The music continues with melodic and harmonic development, including a prominent chordal texture in the lower staff.

Handwritten musical notation for the third system of 'Adagio'. The system consists of two staves. The upper staff is in treble clef and the lower staff is in bass clef. The music concludes with a final cadence, featuring a series of chords in the lower staff.

(Zusatz)

2.

6

(1+ *mf*
2+ *ff*
3+ *f*

Allegro con brio

Handwritten musical notation for the first system, measures 12 and 16. The notation is in treble and bass clefs. Measure 12 is marked with *mf*. Measure 16 is marked with *f*. The music features a melodic line in the treble and a supporting line in the bass.

Handwritten musical notation for the second system, measures 17 and 18. The notation is in treble and bass clefs. Measure 17 is marked with *f*. The music continues with melodic and harmonic development.

Handwritten musical notation for the third system, measures 19 and 20. The notation is in treble and bass clefs. Measure 19 is marked with *mf*. The music concludes with a final cadence in measure 20.

Handwritten musical notation for the first system, consisting of two staves. The upper staff contains a series of beamed notes with various accidentals (sharps and naturals). The lower staff features a similar rhythmic pattern with some notes marked with a 't' and a 'z'. A key signature change to one sharp (F#) is indicated in the second measure.

Handwritten musical notation for the second system, consisting of two staves. The upper staff has a melodic line with several slurs. The lower staff has a more rhythmic accompaniment with some slurs. A key signature change to one flat (Bb) is indicated in the second measure.

Handwritten musical notation for the third system, consisting of two staves. The upper staff has a melodic line with many slurs. The lower staff has a complex rhythmic accompaniment with many beamed notes and slurs. A key signature change to two flats (Bb, Eb) is indicated in the second measure.

Handwritten musical notation for the fourth system, consisting of two staves. The upper staff has a melodic line with many slurs. The lower staff has a complex rhythmic accompaniment with many beamed notes and slurs. A key signature change to two sharps (F#, C#) is indicated in the second measure.

Handwritten musical notation for the first system. The treble staff begins with a half note G4, followed by a quarter rest, then eighth notes A4, B4, C5, and B4. The bass staff has a whole rest. The second measure shows a treble staff with a whole note chord (F4, A4, C5) and a bass staff with a half note G4, followed by eighth notes A4, B4, C5, and B4.

Handwritten musical notation for the second system. The treble staff starts with a slur over eighth notes G4, A4, B4, C5, B4, A4, G4. The bass staff has a half note G4, followed by eighth notes A4, B4, C5, and B4. The second measure shows a treble staff with a half note chord (F4, A4, C5) and a bass staff with eighth notes G4, A4, B4, C5, B4, A4, G4.

Handwritten musical notation for the third system. The treble staff has a slur over eighth notes G4, A4, B4, C5, B4, A4, G4. The bass staff has eighth notes G4, A4, B4, C5, B4, A4, G4. The second measure shows a treble staff with a slur over eighth notes G4, A4, B4, C5, B4, A4, G4 and a bass staff with eighth notes G4, A4, B4, C5, B4, A4, G4.

(letzte + sat.)

7

frei (alla fantasia)

rubato **ff**

4/4

rubato (frei)

rit

rit

breit (rit)

(frei) rubato

breit

(rubato) — rit

breit

(frei (rubato) (gut))

breit

(gut)

attacca

Presto

Handwritten musical notation for the first system, measures 12 and 16. The notation is in treble clef with a key signature of one sharp (F#). Measure 12 contains two groups of beamed eighth notes, each with a slur above it. Measure 16 contains two groups of beamed eighth notes, each with a slur above it. The notes in measure 16 are higher in pitch than those in measure 12.

Handwritten musical notation for the second system, measures 13 and 14. The notation is in treble clef with a key signature of one sharp (F#). Measure 13 contains two groups of beamed eighth notes, each with a slur above it. Measure 14 contains two groups of beamed eighth notes, each with a slur above it. The notes in measure 14 are higher in pitch than those in measure 13.

Handwritten musical notation for the third system, measures 15 and 16. The notation is in treble clef with a key signature of one sharp (F#). Measure 15 contains two groups of beamed eighth notes, each with a slur above it. Measure 16 contains two groups of beamed eighth notes, each with a slur above it. The notes in measure 16 are higher in pitch than those in measure 15.

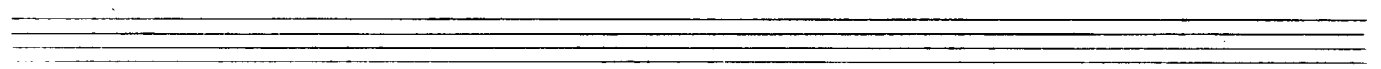
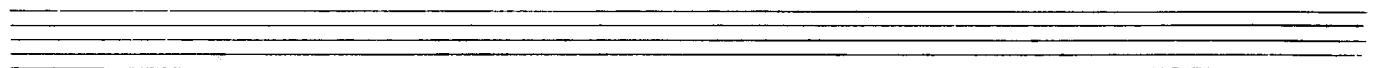
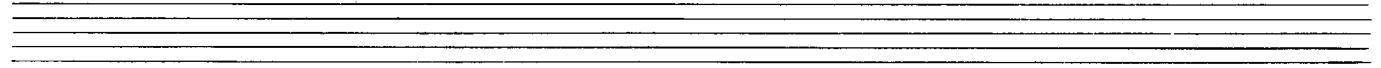
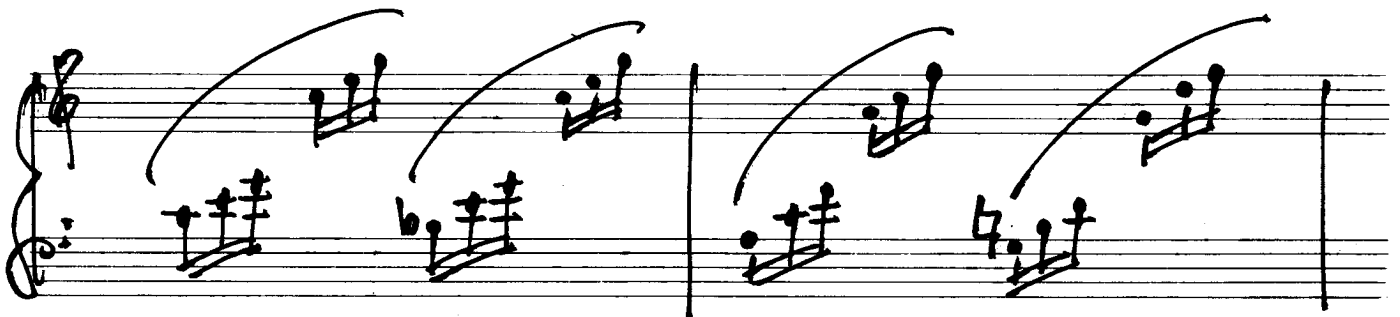
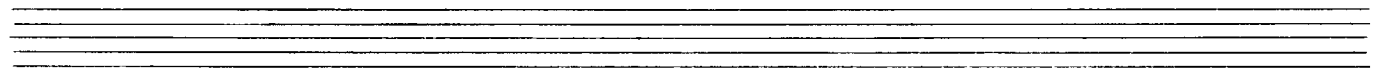
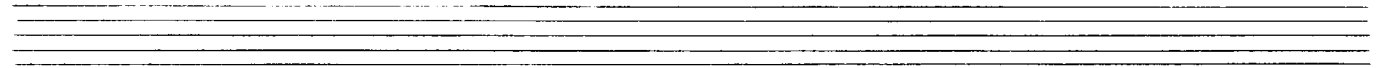
Handwritten musical notation for the fourth system, measures 17 and 18. The notation is in treble clef with a key signature of one sharp (F#). Measure 17 contains two groups of beamed eighth notes, each with a slur above it. Measure 18 contains two groups of beamed eighth notes, each with a slur above it. The notes in measure 18 are higher in pitch than those in measure 17.

Handwritten musical notation for the first system, measures 1-2. The system consists of two staves. The right staff is in treble clef and the left staff is in bass clef. Both staves have a key signature of one sharp (F#). The music features a series of chords with long, sweeping slurs connecting them across the bar lines. The notes are mostly eighth and sixteenth notes.

Handwritten musical notation for the second system, measures 3-4. The system consists of two staves. The right staff is in treble clef and the left staff is in bass clef. Both staves have a key signature of one sharp (F#). The music continues with a series of chords and long, sweeping slurs across the bar lines.

Handwritten musical notation for the third system, measures 5-6. The system consists of two staves. The right staff is in treble clef and the left staff is in bass clef. The key signature changes to one flat (Bb) starting in measure 5. The music continues with a series of chords and long, sweeping slurs across the bar lines.

Handwritten musical notation for the fourth system, measures 7-8. The system consists of two staves. The right staff is in treble clef and the left staff is in bass clef. The key signature remains one flat (Bb). The music continues with a series of chords and long, sweeping slurs across the bar lines.



poco rit

*for
allucina*

*Da capo
(Thema)
Nr. 1. al
Fine*

*1971
Adolf Scherbaum*