

Improvisationen Über ein choral Thema

Für gr. Orgel

1971

Adolf Schönbauer

**Notenheft**

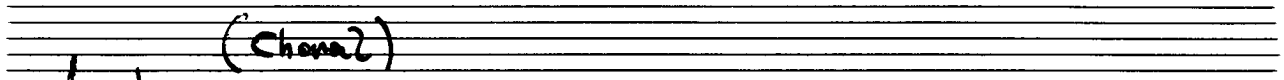
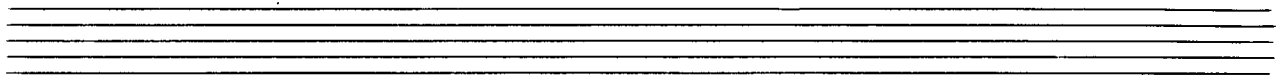
IMPROVISATIONEN ÜBER

EIN CHORALTHEMA

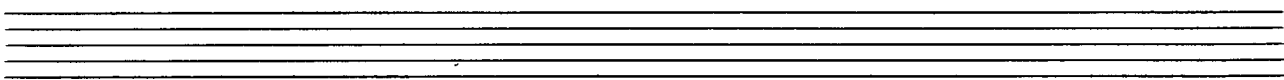
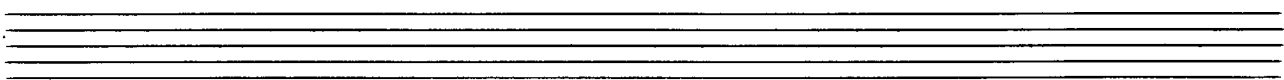
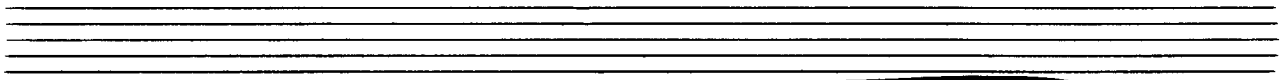
1971

für große Orgel

v. Adolf Scherbaum



Lento (Chora 2)

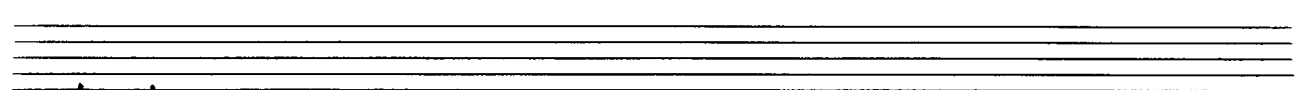
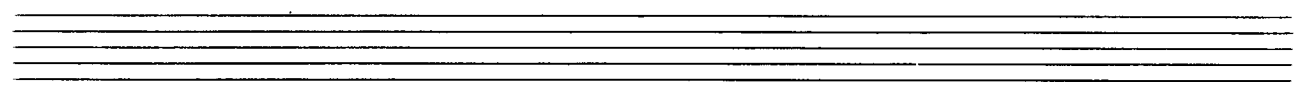


Handwritten musical notation for the first system. The treble clef staff contains notes:  $b^b$ ,  $b^b$ ,  $d$ ,  $b^b$ ,  $d$ ,  $d$ , and  $\#c$ . The bass clef staff contains notes:  $b^b$ ,  $b^b$ ,  $o$ ,  $b^b$ , and  $\#c$ . A large slur covers the entire system.

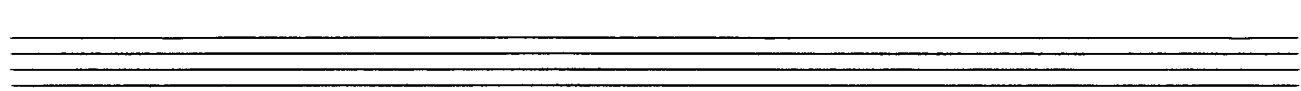
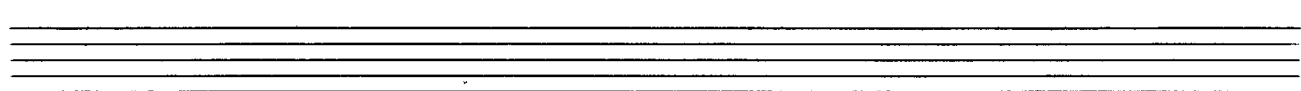
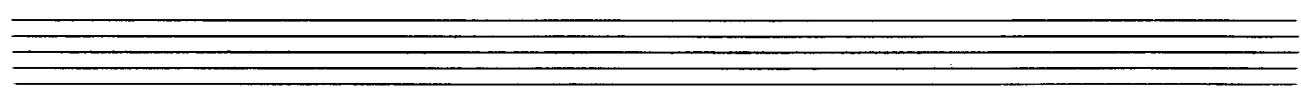
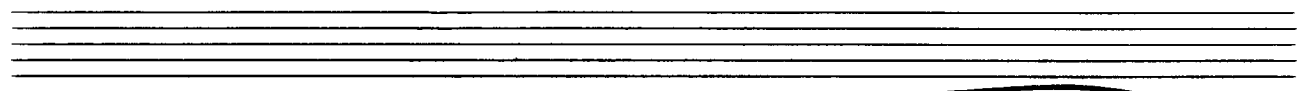
Handwritten musical notation for the second system. The treble clef staff contains notes:  $o$ ,  $d$ ,  $b^b$ ,  $b^b$ ,  $d$ , and  $b^b$ . The bass clef staff contains notes:  $o$ ,  $o$ ,  $o$ ,  $o$ , and  $b^b$ . A large slur covers the entire system.

Handwritten musical notation for the third system. The treble clef staff contains notes:  $b^b$ ,  $o$ ,  $d$ ,  $b^b$ ,  $d$ ,  $d$ , and  $\#c$ . The bass clef staff contains notes:  $g$ ,  $b^b$ ,  $o$ ,  $b^b$ , and  $b^b$ . A large slur covers the entire system.

Handwritten musical notation for the fourth system. The treble clef staff contains notes:  $b^b$ ,  $\#c$ ,  $b^b$ ,  $\#c$ ,  $\#c$ ,  $\#c$ , and  $\#c$ . The bass clef staff contains notes:  $b^b$ ,  $o$ ,  $o$ ,  $o$ , and  $\#c$ . A large slur covers the entire system.



Lento



Handwritten musical notation for the first system. The treble clef staff contains notes with accidentals (b, d) and a slur. The bass clef staff contains notes with accidentals (f, b, g) and a slur. There are handwritten annotations above the treble staff: "7444 b d" and "b o".

Handwritten musical notation for the second system. The treble clef staff contains notes with accidentals (b, d) and a slur. The bass clef staff contains notes with accidentals (b, #) and a slur. There are handwritten annotations above the treble staff: "b o" and "bd.".

Handwritten musical notation for the third system. The treble clef staff contains notes with accidentals (b, d) and a slur. The bass clef staff contains notes with accidentals (b, d) and a slur. There are handwritten annotations above the treble staff: "c" and "b d".

sehr langsam (ruhig)  $\frac{8}{8}$

Handwritten musical notation for the first system. It consists of two staves. The upper staff is in treble clef and contains a melodic line with notes and accidentals (sharps and flats). The lower staff is in bass clef and contains a bass line with notes and accidentals. The notation includes various rhythmic values and dynamic markings.

Handwritten musical notation for the second system. It consists of two staves. The upper staff is in treble clef and contains a melodic line with notes and accidentals. The lower staff is in bass clef and contains a bass line with notes and accidentals. The notation includes various rhythmic values and dynamic markings.

Handwritten musical notation for the third system. It consists of two staves. The upper staff is in treble clef and contains a melodic line with notes and accidentals. The lower staff is in bass clef and contains a bass line with notes and accidentals. The notation includes various rhythmic values and dynamic markings.

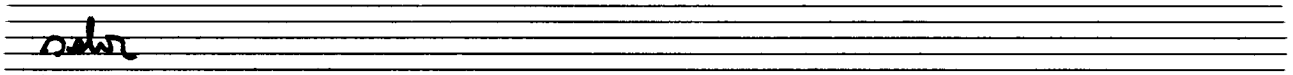
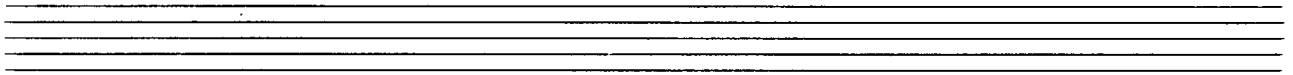
Handwritten musical notation for the first system. It consists of two staves. The upper staff is in treble clef and contains a melodic line with notes, accidentals (flats and sharps), and a large slur. The lower staff is in bass clef and contains a bass line with notes and accidentals, including a sharp sign.

Handwritten musical notation for the second system. It consists of two staves. The upper staff is in treble clef and contains notes, accidentals, and the handwritten numbers '44 44' above the staff. The lower staff is in bass clef and contains notes and accidentals.

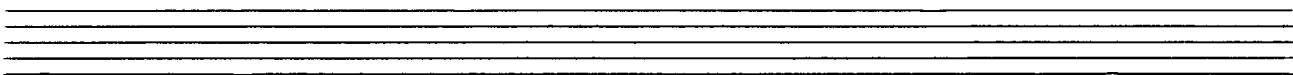
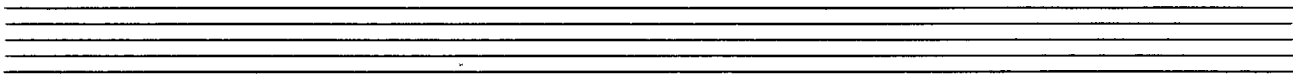
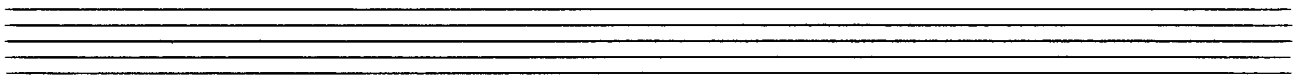
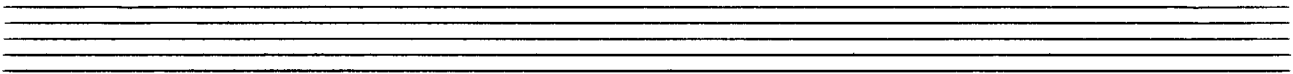
Handwritten musical notation for the third system. It consists of two staves. The upper staff is in treble clef and contains notes, accidentals, and a large slur. The lower staff is in bass clef and contains notes and accidentals.

*mit* - - - - -





*sehr  
ruhig*



Handwritten musical notation for the first system. The right hand has two measures of eighth-note chords with slurs. The left hand has a whole note chord with a flat, followed by a half note chord with a flat and a quarter note chord with a flat.

Handwritten musical notation for the second system. The right hand features two measures of eighth-note chords with triplets and slurs. The left hand has a whole note chord with a flat and a quarter note chord with a flat.

Handwritten musical notation for the third system. The right hand has two measures of eighth-note chords with triplets and slurs. The left hand has a whole note chord with a flat and a quarter note chord with a flat.

Handwritten musical notation for the fourth system. The right hand has a whole note chord with a flat and a half note chord with a sharp. The left hand has a whole note chord with a flat and a half note chord with a flat.

pesante / breit

Handwritten musical notation for the first system, featuring a grand staff with treble and bass clefs. The music is in 4/4 time and includes various rhythmic notations such as quarter notes, eighth notes, and rests, along with dynamic markings like 'p' and 'f'.

ADAGIO

Handwritten musical notation for the second system, featuring a grand staff with treble and bass clefs. The music is in 6/4 time and includes various rhythmic notations such as quarter notes, eighth notes, and rests, along with dynamic markings like 'p' and 'f'.

frei (rubato)

Handwritten musical notation for the third system, featuring a grand staff with treble and bass clefs. The music is in 2/4 time and includes various rhythmic notations such as quarter notes, eighth notes, and rests, along with dynamic markings like 'p' and 'f'.

wieder breit

sehr ruhig

sehr ruhig

Handwritten musical notation for the first system. It consists of two staves: a treble clef staff on top and a bass clef staff on the bottom. The treble staff contains several notes, some with accidentals (sharps and naturals), and is marked with a dynamic of *p*. The bass staff contains notes and rests, with a dynamic of *pp*. Above the treble staff, there are handwritten annotations: "4444" above the first measure, "#0" above the second measure, "#0" above the third measure, and "0" above the fourth measure. Below the bass staff, there are handwritten annotations: "4444" below the first measure, "9" below the second measure, "4444" below the third measure, and "9" below the fourth measure. The notation is connected by horizontal lines across the staves.

Handwritten musical notation for the second system. It consists of two staves: a treble clef staff on top and a bass clef staff on the bottom. The treble staff contains notes and rests, with a dynamic of *p*. The bass staff contains notes and rests, with a dynamic of *pp*. Above the treble staff, there are handwritten annotations: "4444" above the first measure, "#9" above the second measure, and "0" above the third measure. Below the bass staff, there are handwritten annotations: "4444" below the first measure, "bd" below the second measure, and "4444" below the third measure. The notation is connected by horizontal lines across the staves.

Handwritten musical notation for the third system. It consists of two staves: a treble clef staff on top and a bass clef staff on the bottom. The treble staff contains notes and rests, with a dynamic of *p*. The bass staff contains notes and rests, with a dynamic of *pp*. Above the treble staff, there are handwritten annotations: "4444" above the first measure, "4" above the second measure, "4" above the third measure, and "4" above the fourth measure. Below the bass staff, there are handwritten annotations: "4" below the first measure, "4" below the second measure, "4" below the third measure, and "4" below the fourth measure. The notation is connected by horizontal lines across the staves.



Mod.

Handwritten musical notation for the first system. The treble clef staff contains a melodic line with eighth notes and beams, including a circled plus sign. The bass clef staff contains a bass line with a sharp sign and a whole note. The time signature is 4/8.

Handwritten musical notation for the second system. The treble clef staff continues the melodic line with eighth notes and beams. The bass clef staff continues the bass line with a sharp sign and a whole note.

Handwritten musical notation for the third system. The treble clef staff continues the melodic line with eighth notes and beams. The bass clef staff continues the bass line with a sharp sign and a whole note.

Handwritten musical notation for the first system. The treble staff contains four measures of music with notes and accidentals, including a sharp sign. The bass staff contains a single note with a sharp sign.

Handwritten musical notation for the second system. The treble staff contains four measures of music with notes and accidentals, including a sharp sign. The bass staff contains a single note with a sharp sign.

Handwritten musical notation for the third system. The treble staff contains four measures of music with notes and accidentals, including a sharp sign. The bass staff contains a single note with a sharp sign.

Handwritten musical notation for the fourth system. The treble staff contains four measures of music with notes and accidentals, including a sharp sign. The bass staff contains a single note with a sharp sign. The system ends with a double bar line and a wavy line.



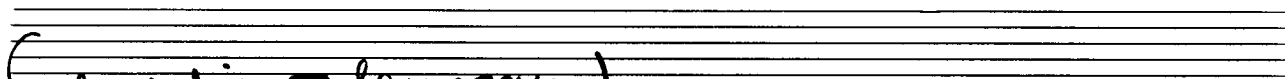
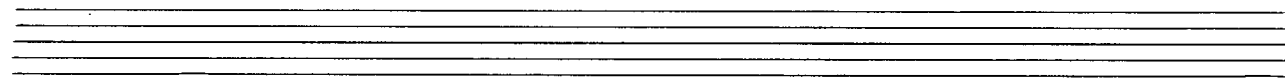
*Allegro (rubato)*

Handwritten musical notation for the first system. It consists of two staves: a treble clef staff and a bass clef staff. The key signature has one sharp (F#). The time signature is 4/8. The first measure contains a treble clef, a sharp sign, and a dynamic marking 'ff'. The melody in the treble staff begins with a quarter note G4, followed by a quarter note A4, and then a quarter note B4. The bass staff has a quarter rest, followed by a quarter note G3, and then a quarter note F#3. A triplet of eighth notes is marked with a '3' and a bracket. The system ends with a double bar line.

Handwritten musical notation for the second system. It continues from the first system. The treble staff has a quarter note G4, followed by a quarter note A4, and then a quarter note B4. The bass staff has a quarter note G3, followed by a quarter note F#3, and then a quarter note E3. The system ends with a double bar line.

Handwritten musical notation for the third system. The treble staff has a quarter note G4, followed by a quarter note A4, and then a quarter note B4. The bass staff has a quarter note G3, followed by a quarter note F#3, and then a quarter note E3. The system ends with a double bar line.

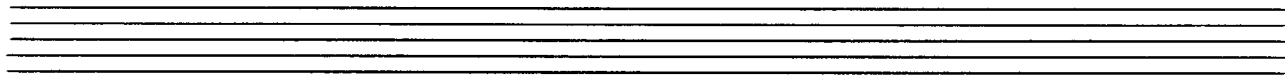
2. x gut.



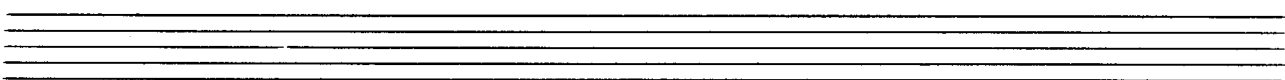
(sehr ruhig - langsam)

#0

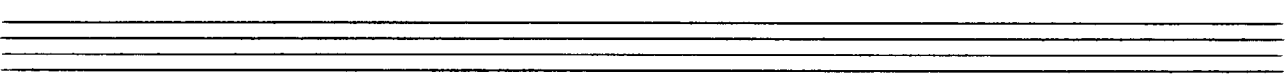
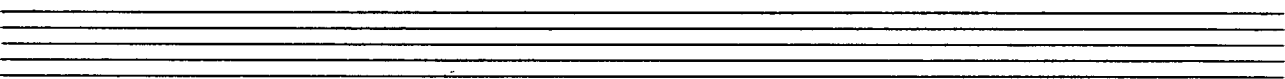
ppp  
8



#0



b0



Handwritten musical notation for the first system. The system consists of two staves. The upper staff is in treble clef and contains a melodic line with a slur over it. The lower staff is in bass clef and contains a bass line with a slur over it. A handwritten chord symbol  $G^{\circ}$  is written above the first measure of the upper staff. The music features a sequence of chords:  $G^{\circ}$ ,  $F^{\circ}$ ,  $E^{\circ}$ , and  $D^{\circ}$ .

Handwritten musical notation for the second system. The system consists of two staves. The upper staff is in treble clef and contains a melodic line with a slur over it. The lower staff is in bass clef and contains a bass line with a slur over it. Handwritten chord symbols  $B^{\circ}$  and  $A^{\circ}$  are written above the first and second measures of the upper staff, respectively. The music features a sequence of chords:  $B^{\circ}$ ,  $A^{\circ}$ ,  $G^{\circ}$ ,  $F^{\circ}$ ,  $E^{\circ}$ , and  $D^{\circ}$ .

Handwritten musical notation for the third system. The system consists of two staves. The upper staff is in treble clef and contains a melodic line with a slur over it. The lower staff is in bass clef and contains a bass line with a slur over it. Handwritten chord symbols  $F^{\circ}$ ,  $E^{\circ}$ ,  $D^{\circ}$ , and  $C^{\circ}$  are written above the first, second, third, and fourth measures of the upper staff, respectively. The music features a sequence of chords:  $F^{\circ}$ ,  $E^{\circ}$ ,  $D^{\circ}$ , and  $C^{\circ}$ .

Handwritten musical notation for the fourth system. The system consists of two staves. The upper staff is in treble clef and contains a melodic line with a slur over it. The lower staff is in bass clef and contains a bass line with a slur over it. Handwritten chord symbols  $C^{\circ}$ ,  $F^{\circ}$ , and  $C^{\circ}$  are written above the first, second, and third measures of the upper staff, respectively. The music features a sequence of chords:  $C^{\circ}$ ,  $F^{\circ}$ , and  $C^{\circ}$ .

(sehr ruhig) (Ad libit.)

Handwritten musical notation for the first system. It consists of two staves: a treble clef staff and a bass clef staff. The time signature is 3/8. A circled 'p' indicates piano dynamics. The key signature changes from one flat (Bb) to one sharp (F#) in the final measure. The notation includes quarter notes, eighth notes, and rests, with some notes beamed together.

Handwritten musical notation for the second system. It continues the piece with two staves. The notation includes quarter notes, eighth notes, and rests, with some notes beamed together. The key signature remains one sharp (F#).

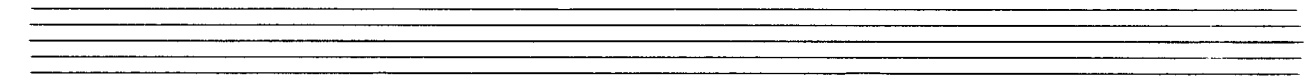
Handwritten musical notation for the third system. It concludes the piece with two staves. The notation includes quarter notes, eighth notes, and rests, with some notes beamed together. The key signature remains one sharp (F#).

Handwritten musical notation for the first system. The treble clef staff contains a series of notes: a dotted quarter note, a quarter note, and a beamed eighth-note pair. The bass clef staff contains a dotted quarter note, a quarter note, and a half note. There are various accidentals (flats and naturals) and a fermata over the final note of the bass staff.

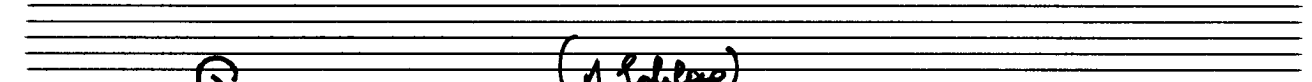
Handwritten musical notation for the second system. The treble clef staff features a dotted quarter note, a quarter note, and a beamed eighth-note pair. The bass clef staff contains a dotted quarter note, a quarter note, and a half note. There are various accidentals (flats and naturals) and a fermata over the final note of the bass staff.

Handwritten musical notation for the third system. The treble clef staff contains a dotted quarter note, a quarter note, and a beamed eighth-note pair. The bass clef staff contains a dotted quarter note, a quarter note, and a half note. There are various accidentals (flats and naturals) and a fermata over the final note of the bass staff. The system ends with a double bar line and a wavy line.

(2te x pr. mit ..... mit (2te, Tabak 12))



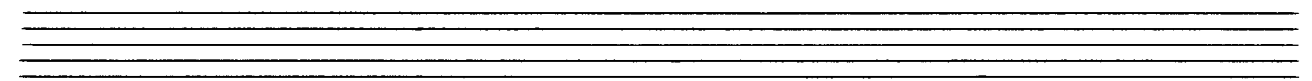
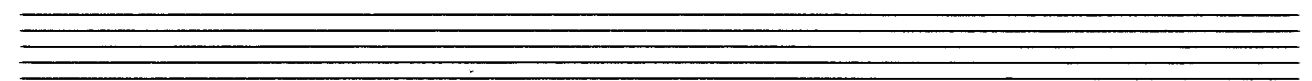
Handwritten musical notation for the first system, featuring a grand staff with treble and bass clefs. The notation includes a tempo marking "buen" and several measures of music with notes and rests. Above the staff, there are handwritten chord diagrams:  $C: \phi 1000010$ ,  $C: \phi 1000010$ , and  $C: \phi 1000010$ . Below the staff, there are handwritten chord diagrams:  $C: \phi 1000010$ ,  $C: \phi 1000010$ , and  $C: \phi 1000010$ .



Handwritten musical notation for the second system, featuring a grand staff with treble and bass clefs. The notation includes a tempo marking "PRESTO (1. Schlep)" and a time signature of 5/8. The music consists of several measures with notes and rests. Above the staff, there are handwritten chord diagrams:  $C: \phi 1000010$  and  $C: \phi 1000010$ . Below the staff, there are handwritten chord diagrams:  $C: \phi 1000010$  and  $C: \phi 1000010$ .



Handwritten musical notation for the third system, featuring a grand staff with treble and bass clefs. The notation includes several measures of music with notes and rests. Above the staff, there are handwritten chord diagrams:  $C: \phi 1000010$ ,  $C: \phi 1000010$ , and  $C: \phi 1000010$ . Below the staff, there are handwritten chord diagrams:  $C: \phi 1000010$ ,  $C: \phi 1000010$ , and  $C: \phi 1000010$ .



Handwritten musical notation for the first system. The treble clef staff contains notes with accidentals (bb, #) and stems. The bass clef staff contains notes with stems and accidentals. The system concludes with a double bar line.

Handwritten musical notation for the second system. The treble clef staff has a 6/8 time signature and notes with stems. The bass clef staff has notes with stems and accidentals. The system concludes with a double bar line.

Handwritten musical notation for the third system. The treble clef staff has notes with stems and accidentals. The bass clef staff has notes with stems and accidentals. The system concludes with a double bar line.

Handwritten musical notation for the fourth system. The treble clef staff has notes with stems and accidentals. The bass clef staff has notes with stems and accidentals. The system concludes with a wavy ending line.



*Prestissimo*

Handwritten musical score for the first system. It consists of three staves: a treble clef staff, a bass clef staff, and a common time signature staff. The treble staff contains a melodic line with various accidentals (sharps, flats, naturals) and a fermata over the final measure. The bass staff contains a rhythmic accompaniment with quarter notes and rests. A circled key signature of three sharps (F#, C#, G#) is written at the beginning of the bass staff.

Handwritten musical score for the second system. It consists of three staves: a treble clef staff, a bass clef staff, and a common time signature staff. The treble staff continues the melodic line from the first system. The bass staff continues the rhythmic accompaniment. A circled key signature of three sharps (F#, C#, G#) is written at the beginning of the bass staff.

Handwritten musical score for the first system. It consists of three staves: a treble clef staff, a bass clef staff, and a lower bass clef staff. The treble staff contains a melodic line with various accidentals (sharps, naturals, flats) and slurs. The middle bass staff contains a bass line with similar rhythmic and melodic patterns. The lower bass staff contains a simple bass line with quarter notes and rests. The system is divided into four measures by vertical bar lines.

Handwritten musical score for the second system. It consists of three staves: a treble clef staff, a bass clef staff, and a lower bass clef staff. The treble staff features a more complex melodic line with many accidentals and slurs. The middle bass staff contains a bass line with eighth and sixteenth notes. The lower bass staff contains a simple bass line with quarter notes and rests. The system is divided into four measures by vertical bar lines.

Handwritten musical score for the third system. It consists of three staves: a treble clef staff, a bass clef staff, and a lower bass clef staff. The treble staff contains a melodic line with slurs and accidentals, ending with a circled number '3' above a double bar line. The middle bass staff contains a bass line with eighth and sixteenth notes. The lower bass staff contains a simple bass line with quarter notes and rests. The system is divided into four measures by vertical bar lines.

sehr ruhig -  $\frac{8}{8}$

Handwritten musical notation for the first system. The treble clef staff contains a melodic line starting with a quarter rest, followed by eighth notes: G#4, A#4, B4, C5, D5, E5, F#5, G#5. The bass clef staff contains a bass line starting with a whole rest, followed by quarter notes: G2, F#2, E2, D2, C2, B1, A1, G1. A dynamic marking 'pp' is present in the bass staff.

Handwritten musical notation for the second system. The treble clef staff continues the melodic line with quarter notes: G#4, A#4, B4, C5, D5, E5, F#5, G#5. The bass clef staff continues the bass line with quarter notes: G2, F#2, E2, D2, C2, B1, A1, G1.

Handwritten musical notation for the third system. The treble clef staff contains a melodic line with quarter notes: G#4, A#4, B4, C5, D5, E5, F#5, G#5. The bass clef staff contains a bass line with quarter notes: G2, F#2, E2, D2, C2, B1, A1, G1.

rit.

Handwritten musical notation for the fourth system. The treble clef staff contains a melodic line with quarter notes: G#4, A#4, B4, C5, D5, E5, F#5, G#5. The bass clef staff contains a bass line with quarter notes: G2, F#2, E2, D2, C2, B1, A1, G1.

ritacca

subito (frei) march  
subito

Allegro

brest  
rit



Handwritten musical notation for the first system. It consists of three staves. The top staff is a treble clef with a key signature of one sharp (F#) and a common time signature (C). The middle staff is a treble clef with a key signature of two sharps (F# and C#) and a common time signature (C). The bottom staff is a bass clef with a common time signature (C). The music features a melodic line in the bass clef with various accidentals and accents (^) above the notes. The system ends with a double bar line.

Handwritten musical notation for the second system. It consists of three staves. The top staff is a treble clef with a key signature of two flats (Bb and Eb) and a common time signature (C). The middle staff is a bass clef with a common time signature (C). The bottom staff is a bass clef with a common time signature (C). The music features a melodic line in the bass clef with various accidentals and accents (^) above the notes. The system ends with a double bar line.

Handwritten musical notation for the third system. It consists of three staves. The top staff is a treble clef with a key signature of two sharps (F# and C#) and a common time signature (C). The middle staff is a bass clef with a key signature of two sharps (F# and C#) and a common time signature (C). The bottom staff is a bass clef with a common time signature (C). The music features a melodic line in the bass clef with various accidentals and accents (^) above the notes. The system is divided into two measures by a vertical line. The second measure is marked with the tempo instruction "poco rit.." and ends with a double bar line and an arrow pointing to the right.

Presto

Handwritten musical notation for the first system. The treble clef staff contains a melodic line with a key signature of one sharp (F#) and a 4/4 time signature. The melody includes triplets and a fermata. The bass clef staff contains a bass line with a 4/4 time signature and a fermata.

Handwritten musical notation for the second system. The treble clef staff contains a melodic line with a key signature of one flat (Bb) and a 4/4 time signature. The melody includes triplets and a fermata. The bass clef staff contains a bass line with a 4/4 time signature and a fermata.

Handwritten musical notation for the third system. The treble clef staff contains a melodic line with a key signature of one flat (Bb) and a 4/4 time signature. The melody includes triplets and a fermata. The bass clef staff contains a bass line with a 4/4 time signature and a fermata.

Handwritten musical score for the first system. The system consists of three staves. The top staff is in treble clef and contains a melodic line with a triplet of eighth notes. The middle and bottom staves are in bass clef and contain a harmonic accompaniment. A handwritten '49' is written below the bottom staff.

Handwritten musical score for the second system. The system consists of three staves. The top staff is in treble clef and contains a melodic line with a triplet of eighth notes. The middle and bottom staves are in bass clef and contain a harmonic accompaniment. A handwritten '49' is written below the bottom staff.

Handwritten musical score for the third system. The system consists of three staves. The top staff is in treble clef and contains a melodic line with a triplet of eighth notes. The middle and bottom staves are in bass clef and contain a harmonic accompaniment. A handwritten '49' is written below the bottom staff.



3

79.

3

79.

breit (ADAGIO)

Lunga

FINE

79

1970  
Inge Adamiker-Scherbaum