

Improvisationen Über ein Choralthema

Für gr. Orgel

1971

Adolf Scherbaum

Notenheft



IMPROVISATIONEN ÜBER

EIN CHORALTHEMA

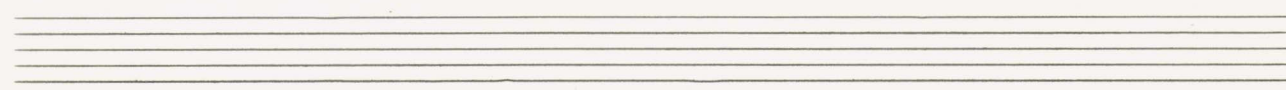
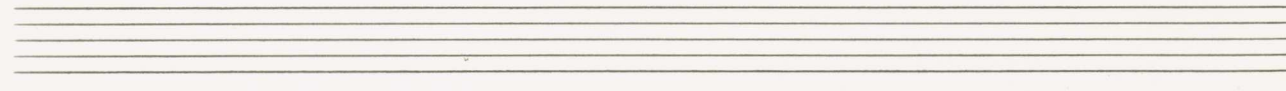
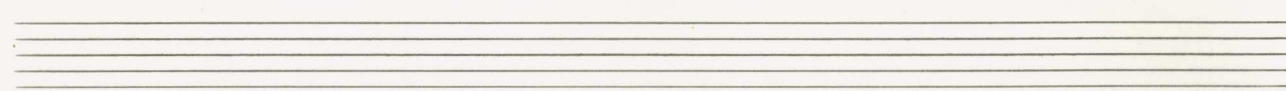
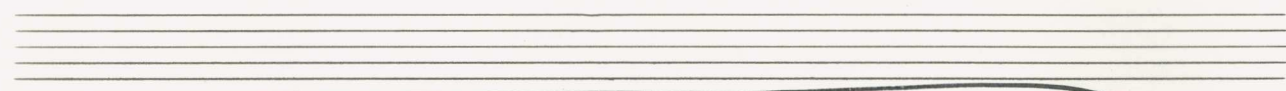
1971

für große Orgel

v. Adolf Scherbaum



Lento (Choral 2)



Handwritten musical notation for the first system. The treble clef staff contains notes: b^b , b^b , d , b^b , d , b^b , d , and $\#c$. The bass clef staff contains notes: b^b , b^b , d , b^b , d , and $\#c$. A large slur covers the entire system.

Handwritten musical notation for the second system. The treble clef staff contains notes: d , b^b , b^b , d , b^b , d , and b^b . The bass clef staff contains notes: b^b , b^b , d , b^b , d , and b^b . A large slur covers the entire system.

Handwritten musical notation for the third system. The treble clef staff contains notes: b^b , d , b^b , d , d , and $\#c$. The bass clef staff contains notes: b^b , b^b , d , b^b , d , and b^b . A large slur covers the entire system.

Handwritten musical notation for the fourth system. The treble clef staff contains notes: b^b , $\#c$, b^b , $\#c$, $\#c$, $\#c$, $\#c$, and $\#c$. The bass clef staff contains notes: b^b , b^b , d , b^b , d , and b^b . A large slur covers the entire system. There are dynamic markings like ff and mf in the treble staff.

Lento

Handwritten musical notation for the first system. It consists of two staves. The upper staff is in treble clef and contains a whole note chord with a sharp sign (#) above it, followed by a slur over a whole note chord with a sharp sign (#) and a circled cross symbol. The lower staff is in bass clef and contains two measures. The first measure has a whole note chord with a sharp sign (#) and a circled cross symbol, followed by a slur over a whole note chord with a sharp sign (#) and a circled cross symbol. The second measure has a whole note chord with a flat sign (b) and a circled cross symbol, followed by a slur over a whole note chord with a flat sign (b) and a circled cross symbol. The tempo marking 'Lento' is written above the first staff. The dynamic marking 'pp' is written below the first measure of the lower staff.

Handwritten musical notation for the second system. It consists of two staves. The upper staff is in treble clef and contains a whole note chord with a flat sign (b) and a circled cross symbol, followed by a slur over a whole note chord with a double bar line and a circled cross symbol. The lower staff is in bass clef and contains two measures. The first measure has a whole note chord with a flat sign (b) and a circled cross symbol, followed by a slur over a whole note chord with a flat sign (b) and a circled cross symbol. The second measure has a whole note chord with a flat sign (b) and a circled cross symbol, followed by a slur over a whole note chord with a flat sign (b) and a circled cross symbol.

Handwritten musical notation for the third system. It consists of two staves. The upper staff is in treble clef and contains a whole note chord with a flat sign (b) and a circled cross symbol, followed by a slur over a whole note chord with a circled cross symbol. The lower staff is in bass clef and contains two measures. The first measure has a whole note chord with a flat sign (b) and a circled cross symbol, followed by a slur over a whole note chord with a sharp sign (#) and a circled cross symbol. The second measure has a whole note chord with a flat sign (b) and a circled cross symbol, followed by a slur over a whole note chord with a flat sign (b) and a circled cross symbol.

Handwritten musical notation for the first system. The treble clef staff contains notes with accidentals (flats and naturals) and a slur. The bass clef staff contains notes with accidentals and a slur. Above the treble staff, there are handwritten annotations: "8" above the first measure, "4444 b d" above the second measure, and "b" above the first note of the second measure.

Handwritten musical notation for the second system. The treble clef staff contains notes with accidentals (flats and naturals) and a slur. The bass clef staff contains notes with accidentals and a slur. Above the treble staff, there are handwritten annotations: "b b b" above the first measure, "b d" above the second measure, and "44 b d." above the notes in the second measure.

Handwritten musical notation for the third system. The treble clef staff contains notes with accidentals and a slur. The bass clef staff contains notes with accidentals and a slur. Above the treble staff, there are handwritten annotations: "c" above the first measure, "b b b" above the notes in the first measure, and "c" above the notes in the second measure.

sehr langsam (ruhig) $\frac{8}{8}$

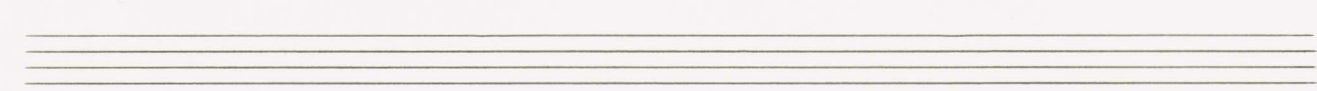
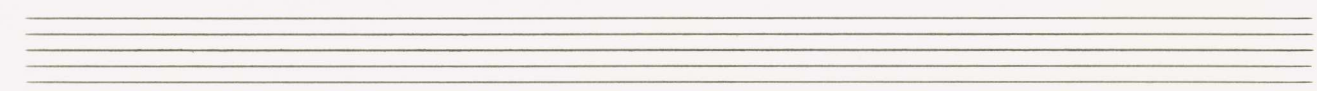
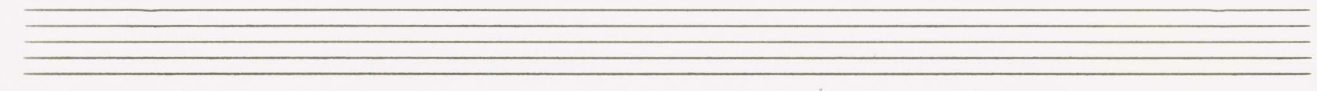
Handwritten musical notation for the first system. It consists of a treble clef and a bass clef. The time signature is $\frac{8}{8}$. The dynamic marking is *pp*. The treble staff contains a melodic line with notes: G#4, A4, Bb4, C5, D5, E5, F#5, G#5, A5, Bb5, C6, D6, E6, F#6, G#6, A6, Bb6, C7. The bass staff contains a bass line with notes: G#2, A2, Bb2, C3, D3, E3, F#3, G#3, A3, Bb3, C4, D4, E4, F#4, G#4, A4, Bb4, C5.

Handwritten musical notation for the second system. The treble staff continues the melodic line with notes: Bb6, C7, D7, E7, F#7, G#7, A7, Bb7, C8. The bass staff continues the bass line with notes: G#2, A2, Bb2, C3, D3, E3, F#3, G#3, A3, Bb3, C4, D4, E4, F#4, G#4, A4, Bb4, C5.

Handwritten musical notation for the third system. The treble staff concludes the melodic line with notes: Bb6, C7, D7, E7, F#7, G#7, A7, Bb7, C8. The bass staff concludes the bass line with notes: G#2, A2, Bb2, C3, D3, E3, F#3, G#3, A3, Bb3, C4, D4, E4, F#4, G#4, A4, Bb4, C5.



sehr ruhig



Handwritten musical notation for the first system. The right hand has two measures of chords with a slur above them. The left hand has a whole note chord 'b d' followed by a whole note chord 'b g'.

Handwritten musical notation for the second system. The right hand has two measures of chords with triplets and slurs. The left hand has a whole note chord 'b g' followed by a whole note chord 'g g'.

Handwritten musical notation for the third system. The right hand has two measures of chords with triplets and slurs. The left hand has a whole note chord 'b g' followed by a whole note chord 'g'.

Handwritten musical notation for the fourth system. The right hand has a whole note chord 'b d' followed by a whole note chord '# a'. The left hand has a whole note chord 'b o'.

pesante / breit

frei (rubato)

wieder breit

sehr ruhig

pp

rit.

sehr ruhig

Handwritten musical notation for the first system. It consists of two staves: a treble clef staff and a bass clef staff. The treble staff begins with a treble clef, a 2/8 time signature, and a dynamic marking of *mp*. The first measure contains a whole note G4 with a sharp sign (#) above it. The second measure contains a whole note A4 with a sharp sign (#) above it. The third measure contains a whole note B4 with a sharp sign (#) above it. The fourth measure contains a whole note C5 with a sharp sign (#) above it. The fifth measure contains a whole note D5 with a sharp sign (#) above it. The sixth measure contains a whole note E5 with a sharp sign (#) above it. The bass staff contains a whole rest in the first measure, followed by a whole note G3 in the second measure, a whole note F3 in the third measure, a whole note E3 in the fourth measure, a whole note D3 in the fifth measure, and a whole note C3 in the sixth measure. There are various handwritten annotations above and below the notes, including '4444' and '4444'.

Handwritten musical notation for the second system. It consists of two staves: a treble clef staff and a bass clef staff. The treble staff begins with a treble clef, a 2/8 time signature, and a dynamic marking of *mp*. The first measure contains a whole note G4 with a sharp sign (#) above it. The second measure contains a whole note A4 with a sharp sign (#) above it. The third measure contains a whole note B4 with a sharp sign (#) above it. The fourth measure contains a whole note C5 with a sharp sign (#) above it. The fifth measure contains a whole note D5 with a sharp sign (#) above it. The sixth measure contains a whole note E5 with a sharp sign (#) above it. The bass staff contains a whole rest in the first measure, followed by a whole note G3 in the second measure, a whole note F3 in the third measure, a whole note E3 in the fourth measure, a whole note D3 in the fifth measure, and a whole note C3 in the sixth measure. There are various handwritten annotations above and below the notes, including '4444' and '4444'.

Handwritten musical notation for the third system. It consists of two staves: a treble clef staff and a bass clef staff. The treble staff begins with a treble clef, a 2/8 time signature, and a dynamic marking of *mp*. The first measure contains a whole note G4 with a sharp sign (#) above it. The second measure contains a whole note A4 with a sharp sign (#) above it. The third measure contains a whole note B4 with a sharp sign (#) above it. The fourth measure contains a whole note C5 with a sharp sign (#) above it. The fifth measure contains a whole note D5 with a sharp sign (#) above it. The sixth measure contains a whole note E5 with a sharp sign (#) above it. The bass staff contains a whole rest in the first measure, followed by a whole note G3 in the second measure, a whole note F3 in the third measure, a whole note E3 in the fourth measure, a whole note D3 in the fifth measure, and a whole note C3 in the sixth measure. There are various handwritten annotations above and below the notes, including '4444' and '4444'.

Mod.

Handwritten musical notation for the first system. It consists of a treble clef and a bass clef. The time signature is 4/8, and the key signature is one sharp (F#). The notation includes eighth notes, quarter notes, and rests, with some notes beamed together. A circled plus sign is present in the bass clef area.

Handwritten musical notation for the second system. It continues the piece with similar rhythmic patterns and a key signature of one sharp.

Handwritten musical notation for the third system. It concludes the piece with similar rhythmic patterns and a key signature of one sharp.

Handwritten musical notation for the first system. The treble staff contains four measures of music with notes, rests, and accidentals. The bass staff contains a single note with a sharp sign and a whole rest.

Handwritten musical notation for the second system. The treble staff contains four measures of music with notes, rests, and accidentals. The bass staff contains a single note with a sharp sign and a whole rest.

Handwritten musical notation for the third system. The treble staff contains four measures of music with notes, rests, and accidentals. The bass staff contains a single note with a sharp sign and a whole rest.

Handwritten musical notation for the fourth system. The treble staff contains four measures of music with notes, rests, and accidentals. The bass staff contains a single note with a sharp sign and a whole rest. The system ends with a double bar line and a wavy line.

Allegro (rubato)

Handwritten musical notation for the first system. It consists of two staves: a treble clef staff on top and a bass clef staff on the bottom. The treble staff begins with a treble clef, a key signature of one sharp (F#), and a 4/8 time signature. The first measure contains a half note G4 with a fortissimo (ff) dynamic marking. The second measure contains a triplet of eighth notes: A4, B4, and C5. The third measure contains a half note D5. The fourth measure contains a half note E5. The fifth measure contains a half note F#5. The sixth measure contains a half note G5. The seventh measure contains a half note A5. The eighth measure contains a half note B5. The ninth measure contains a half note C6. The tenth measure contains a half note D6. The eleventh measure contains a half note E6. The twelfth measure contains a half note F#6. The thirteenth measure contains a half note G6. The fourteenth measure contains a half note A6. The fifteenth measure contains a half note B6. The sixteenth measure contains a half note C7. The bass staff contains various chords and single notes, including a triplet of eighth notes in the second measure and several chords in parentheses in the following measures.

Handwritten musical notation for the second system. It continues the piece with two staves. The treble staff contains a series of chords and melodic fragments, including a triplet of eighth notes in the second measure and several chords in parentheses in the following measures. The bass staff contains various chords and single notes, including a triplet of eighth notes in the second measure and several chords in parentheses in the following measures.

Handwritten musical notation for the third system. It continues the piece with two staves. The treble staff contains a series of chords and melodic fragments, including a triplet of eighth notes in the second measure and several chords in parentheses in the following measures. The bass staff contains various chords and single notes, including a triplet of eighth notes in the second measure and several chords in parentheses in the following measures.

2. x gut.

(sehr ruhig - langsam)

Handwritten musical notation for the first system. It features a grand staff with treble and bass clefs. The key signature is one sharp (F#). The time signature is 8/8. The notation includes a series of chords and melodic lines, with a 'ppp' dynamic marking. A fermata is placed over the first measure.

Handwritten musical notation for the second system. It features a grand staff with treble and bass clefs. The key signature is one sharp (F#). The notation includes a series of chords and melodic lines, with a fermata over the first measure.

Handwritten musical notation for the third system. It features a grand staff with treble and bass clefs. The key signature is one flat (Bb). The notation includes a series of chords and melodic lines, with a fermata over the first measure.

Handwritten musical notation on a grand staff. The upper staff is mostly blank with a treble clef. The lower staff contains a melodic line with a key signature of one sharp (F#) and a common time signature (C). The notation includes a series of eighth notes, some beamed together, and a final measure with a double bar line and repeat dots.

Handwritten musical notation on a grand staff. The upper staff contains a treble clef and a key signature of one sharp (F#). The lower staff contains a melodic line with a common time signature (C). The notation includes a series of eighth notes, some beamed together, and a final measure with a double bar line and repeat dots.

Handwritten musical notation on a grand staff. The upper staff contains a treble clef and a key signature of one sharp (F#). The lower staff contains a melodic line with a common time signature (C). The notation includes a series of eighth notes, some beamed together, and a final measure with a double bar line and repeat dots.

Handwritten musical notation on a grand staff. The upper staff contains a treble clef and a key signature of one sharp (F#). The lower staff contains a melodic line with a common time signature (C). The notation includes a series of eighth notes, some beamed together, and a final measure with a double bar line and repeat dots.

Handwritten musical notation for the first system. The treble clef staff contains a series of notes: a dotted quarter note, a quarter note, and a beamed eighth-note pair. The bass clef staff contains a dotted quarter note, a quarter note, and a beamed eighth-note pair. The system is divided into three measures by vertical bar lines.

Handwritten musical notation for the second system. The treble clef staff contains a series of notes: a dotted quarter note, a quarter note, and a beamed eighth-note pair. The bass clef staff contains a dotted quarter note, a quarter note, and a beamed eighth-note pair. The system is divided into three measures by vertical bar lines.

Handwritten musical notation for the third system. The treble clef staff contains a series of notes: a dotted quarter note, a quarter note, and a beamed eighth-note pair. The bass clef staff contains a dotted quarter note, a quarter note, and a beamed eighth-note pair. The system is divided into three measures by vertical bar lines. The final measure ends with a double bar line and a wavy line.

(2te + pr. mit mit (letz. Takt n.))

Prestissimo

Handwritten musical score for the first system. It consists of three staves: a treble clef staff, a bass clef staff, and a common time signature staff. The treble staff contains a melodic line with notes and accidentals (sharps and flats). The bass staff contains a bass line with notes and accidentals. The common time signature staff shows a circled key signature of one sharp (F#) and a common time signature (C). A large brace spans across the treble and bass staves, indicating a single system. The notes are written in a fluid, handwritten style.

Handwritten musical score for the second system. It consists of three staves: a treble clef staff, a bass clef staff, and a common time signature staff. The treble staff contains a melodic line with notes and accidentals. The bass staff contains a bass line with notes and accidentals. The common time signature staff shows a common time signature (C). A large brace spans across the treble and bass staves, indicating a single system. The notes are written in a fluid, handwritten style.

sehr ruhig - $\frac{8}{8}$

Handwritten musical notation for the first system. The top staff is in treble clef and the bottom staff is in bass clef. The time signature is $\frac{8}{8}$. The first measure contains a half note G4 with a sharp sign, followed by a quarter note A4 with a sharp sign, a quarter note B4 with a natural sign, and a quarter note C5 with a natural sign. The second measure contains a half note D5 with a natural sign, followed by a quarter note E5 with a flat sign, and a quarter note F5 with a natural sign. The third measure contains a half note G5 with a natural sign, followed by a quarter note A5 with a flat sign, and a quarter note B5 with a natural sign. The fourth measure contains a half note C6 with a natural sign, followed by a quarter note D6 with a flat sign, and a quarter note E6 with a natural sign. The fifth measure contains a half note F6 with a natural sign, followed by a quarter note G6 with a flat sign, and a quarter note A6 with a natural sign. The sixth measure contains a half note B6 with a natural sign, followed by a quarter note C7 with a flat sign, and a quarter note D7 with a natural sign. The seventh measure contains a half note E7 with a natural sign, followed by a quarter note F7 with a flat sign, and a quarter note G7 with a natural sign. The eighth measure contains a half note A7 with a natural sign, followed by a quarter note B7 with a flat sign, and a quarter note C8 with a natural sign. The dynamic marking 'pp' is written below the first measure. There are also some handwritten annotations like '7 #' and 'b9' near the notes.

Handwritten musical notation for the second system. The top staff is in treble clef and the bottom staff is in bass clef. The time signature is $\frac{8}{8}$. The first measure contains a half note B4 with a flat sign, followed by a quarter note C5 with a natural sign, a quarter note D5 with a flat sign, and a quarter note E5 with a natural sign. The second measure contains a half note F5 with a natural sign, followed by a quarter note G5 with a flat sign, a quarter note A5 with a natural sign, and a quarter note B5 with a sharp sign. The third measure contains a half note C6 with a sharp sign, followed by a quarter note D6 with a natural sign, and a quarter note E6 with a sharp sign. The fourth measure contains a half note F6 with a sharp sign, followed by a quarter note G6 with a natural sign, and a quarter note A6 with a sharp sign. The fifth measure contains a half note B6 with a sharp sign, followed by a quarter note C7 with a natural sign, and a quarter note D7 with a sharp sign. The sixth measure contains a half note E7 with a sharp sign, followed by a quarter note F7 with a natural sign, and a quarter note G7 with a sharp sign. The seventh measure contains a half note A7 with a sharp sign, followed by a quarter note B7 with a natural sign, and a quarter note C8 with a sharp sign. The eighth measure contains a half note D8 with a sharp sign, followed by a quarter note E8 with a natural sign, and a quarter note F8 with a sharp sign. There are also some handwritten annotations like 'b9' and '#d' near the notes.

Handwritten musical notation for the third system. The top staff is in treble clef and the bottom staff is in bass clef. The time signature is $\frac{8}{8}$. The first measure contains a half note G4 with a sharp sign, followed by a quarter note A4 with a natural sign, a quarter note B4 with a flat sign, and a quarter note C5 with a natural sign. The second measure contains a half note D5 with a natural sign, followed by a quarter note E5 with a flat sign, a quarter note F5 with a natural sign, and a quarter note G5 with a flat sign. The third measure contains a half note A5 with a natural sign, followed by a quarter note B5 with a flat sign, a quarter note C6 with a natural sign, and a quarter note D6 with a flat sign. The fourth measure contains a half note E6 with a natural sign, followed by a quarter note F6 with a flat sign, a quarter note G6 with a natural sign, and a quarter note A6 with a flat sign. The fifth measure contains a half note B6 with a natural sign, followed by a quarter note C7 with a flat sign, a quarter note D7 with a natural sign, and a quarter note E7 with a flat sign. The sixth measure contains a half note F7 with a natural sign, followed by a quarter note G7 with a flat sign, a quarter note A7 with a natural sign, and a quarter note B7 with a flat sign. The seventh measure contains a half note C8 with a natural sign, followed by a quarter note D8 with a flat sign, a quarter note E8 with a natural sign, and a quarter note F8 with a flat sign. The eighth measure contains a half note G8 with a natural sign, followed by a quarter note A8 with a flat sign, a quarter note B8 with a natural sign, and a quarter note C9 with a flat sign. There are also some handwritten annotations like '#9' and 'b9' near the notes.

rit.

Handwritten musical notation for the fourth system. The top staff is in treble clef and the bottom staff is in bass clef. The time signature is $\frac{8}{8}$. The first measure contains a half note G4 with a natural sign, followed by a quarter note A4 with a flat sign, a quarter note B4 with a natural sign, and a quarter note C5 with a sharp sign. The second measure contains a half note D5 with a natural sign, followed by a quarter note E5 with a flat sign, a quarter note F5 with a natural sign, and a quarter note G5 with a sharp sign. The third measure contains a half note A5 with a natural sign, followed by a quarter note B5 with a flat sign, a quarter note C6 with a natural sign, and a quarter note D6 with a sharp sign. The fourth measure contains a half note E6 with a natural sign, followed by a quarter note F6 with a flat sign, a quarter note G6 with a natural sign, and a quarter note A6 with a sharp sign. The fifth measure contains a half note B6 with a natural sign, followed by a quarter note C7 with a flat sign, a quarter note D7 with a natural sign, and a quarter note E7 with a sharp sign. The sixth measure contains a half note F7 with a natural sign, followed by a quarter note G7 with a flat sign, a quarter note A7 with a natural sign, and a quarter note B7 with a sharp sign. The seventh measure contains a half note C8 with a natural sign, followed by a quarter note D8 with a flat sign, a quarter note E8 with a natural sign, and a quarter note F8 with a sharp sign. The eighth measure contains a half note G8 with a natural sign, followed by a quarter note A8 with a flat sign, a quarter note B8 with a natural sign, and a quarter note C9 with a sharp sign. The system ends with a double bar line. There are also some handwritten annotations like 'rit.' and 'rit.' near the notes.

Handwritten musical notation on two staves. The top staff is in treble clef and the bottom in bass clef. Both staves contain whole notes, with a common time signature 'C' written above the first note of each staff.

attaca

subito (frei) march

Handwritten musical notation on two staves. The top staff is in treble clef and the bottom in bass clef. The top staff contains a melodic line with various accidentals (sharps, flats, naturals) and a fermata. The bottom staff contains a bass line with whole notes. A common time signature 'C' is written above the first note of the bass line. The word 'subito' is written above the first measure of the top staff, with an arrow pointing down to the first measure. The word '(frei)' is written above the second measure of the top staff, with an arrow pointing up to the second measure. The word 'march' is written above the top staff. A large slur covers the entire piece. A common time signature 'C' is written above the first note of the bass line.

Handwritten musical notation on two staves. The top staff is in treble clef and the bottom in bass clef. The top staff contains a melodic line with various accidentals and accents (^). The bottom staff contains a bass line with various accidentals. The word 'Allegro' is written above the first measure of the top staff.

Handwritten musical notation on two staves. The top staff is in treble clef and the bottom in bass clef. The top staff contains a melodic line with various accidentals and a fermata. The bottom staff contains a bass line with various accidentals. The word 'brev' is written above the first measure of the top staff. A common time signature 'C' is written above the first note of the bass line. A large slur covers the entire piece. A common time signature 'C' is written above the first note of the bass line.

Allegro con brio

Handwritten musical notation for the first system. It consists of three staves. The top staff is a treble clef with a key signature of one sharp (F#) and a time signature of 7/8. The middle staff is a treble clef with a key signature of two sharps (F# and C#) and a time signature of 3/8. The bottom staff is a bass clef with a time signature of 3/8. The music features a melodic line with various accidentals and accents (^) over the notes.

Handwritten musical notation for the second system. It consists of three staves. The top staff is a treble clef with a key signature of two flats (Bb and Eb) and a time signature of 3/8. The middle staff is a bass clef with a time signature of 3/8. The bottom staff is a bass clef with a time signature of 3/8. The music continues with a melodic line and accents (^) over the notes.

Handwritten musical notation for the third system, divided into two measures. The first measure has a treble clef with a key signature of one sharp (F#) and a time signature of 3/8, and a bass clef with a key signature of one sharp (F#) and a time signature of 3/8. The second measure has a treble clef with a key signature of two sharps (F# and C#) and a time signature of 3/8, and a bass clef with a key signature of two sharps (F# and C#) and a time signature of 3/8. The text "poco rit.." is written in the right margin of the second measure. The system ends with a double bar line and an arrow pointing to the right.

Presto

Handwritten musical notation for the first system. The treble clef staff contains a melodic line with a key signature of one sharp (F#) and a 4/4 time signature. The melody begins with a triplet of eighth notes, followed by a series of eighth notes. The bass clef staff contains a 4/4 time signature and a single note with an accent mark.

Handwritten musical notation for the second system. The treble clef staff contains a melodic line with a key signature of one flat (Bb) and a 4/4 time signature. The melody begins with a triplet of eighth notes, followed by a series of eighth notes. The bass clef staff contains a 4/4 time signature and a single note with an accent mark.

Handwritten musical notation for the third system. The treble clef staff contains a melodic line with a key signature of one sharp (F#) and a 4/4 time signature. The melody begins with a triplet of eighth notes, followed by a series of eighth notes. The bass clef staff contains a 4/4 time signature and a single note with an accent mark.

Handwritten musical score for the first system. The treble clef staff contains a melodic line starting with a triplet of eighth notes. The bass clef staff contains two chords: a G major chord (G4, B4, D5) and a G minor chord (G4, Bb4, D5). A "49" is written below the bass staff.

Handwritten musical score for the second system. The treble clef staff has a melodic line with a triplet of eighth notes. The bass clef staff contains two chords: a Bb major chord (Bb4, D5, F5) and a Bb minor chord (Bb4, D5, F5). A "49" is written below the bass staff.

Handwritten musical score for the third system. The treble clef staff has a melodic line with a triplet of eighth notes. The bass clef staff contains two chords: a Bb major chord (Bb4, D5, F5) and a Bb minor chord (Bb4, D5, F5). A "49" is written below the bass staff.

3

79.

3

79.

breit (ADAGIO)

Lunga

FINE

79.

1970
Adolf Scherbaum