



Konzert in einem Satz  
für Violine

und Streichorchester

1971

Adolf Scherbaum

Allegro

Handwritten musical score for strings, including parts for Violin I (V), Violin II (2V), Br. I (in D, whist), and CtrB. The score shows rhythmic patterns with accents and slurs across two measures.

1

Handwritten musical score for woodwinds, including parts for Flute (Fl.), Oboe (Ob.), Bassoon (Fg.), and Clarinet (Cl.). The score shows melodic lines with slurs and dynamic markings like 'p' and 'mf'.

Handwritten musical score for the first system, consisting of four staves. The notation is primarily rhythmic, using stems with flags and beams. A double bar line is present. Above the second staff, there is a vertical double-headed arrow labeled "uvms". Above the first staff, there is a complex rhythmic figure with a sharp sign and a bracketed group of notes.

Handwritten musical score for the second system, consisting of four staves. The notation includes rhythmic stems and beams, as well as various musical symbols like slurs and accidentals. A circled number "2" is in the top right corner. Above the second staff, there is a vertical double-headed arrow labeled "uvms". Above the first staff, there is a complex rhythmic figure with a sharp sign and a bracketed group of notes.

Solo

1V

2V

Br

CtB

3

3

Handwritten musical score for the first system. It consists of five staves: a violin part and four string parts. The violin part is in treble clef with a key signature of one flat (B-flat). The string parts are in bass clef with a key signature of one flat. The first measure shows rhythmic patterns with '+' signs. The second measure has a fermata. The third measure has a dynamic marking 'p'.

Handwritten musical score for the second system. It consists of five staves: a violin part and four string parts. The violin part is in treble clef with a key signature of one flat. The string parts are in bass clef with a key signature of one flat. The first measure shows a melodic line with a circled '4'. The second measure has a dynamic marking 'p'.

Handwritten musical score for the first system. The top staff is for the violin, with a key signature of one sharp (F#) and a time signature of 3/4. The string quartet is written in four staves below. The notation includes various rhythmic figures, accidentals, and dynamic markings such as  $mf$  and  $f$ .

Handwritten musical score for the second system. The top staff is for the violin, with a key signature of one sharp (F#) and a circled number 5 at the end. The string quartet continues with rhythmic patterns and dynamic markings such as  $f$ .

Handwritten musical score for the first system. The top staff is for the violin, showing a triplet of eighth notes. The bottom four staves are for the string quartet, each marked with "H (pizz)". The key signature has one sharp (F#) and the time signature is 3/4.

Handwritten musical score for the second system, marked with a circled "6". The top staff is for the violin, showing a triplet of eighth notes and a final measure with a fermata. The bottom four staves are for the string quartet, each marked with "H (pizz)". The key signature changes to one flat (F) in the final measure.



Handwritten musical score for the first system. The top staff is a treble clef with a melodic line featuring a triplet of eighth notes, a quarter note, and a half note, all under a slur. The bottom four staves are a grand staff with a common time signature and a key signature of one sharp (F#). Each staff contains a whole note chord with a slur above it. The chords are: G4 (treble), G2 (bass), G4 (treble), G2 (bass), G4 (treble), G2 (bass), G4 (treble), G2 (bass).

Handwritten musical score for the second system. The top staff is a treble clef with a melodic line featuring a triplet of eighth notes, a quarter note, and a half note, all under a slur. The bottom four staves are a grand staff with a common time signature and a key signature of one sharp (F#). Each staff contains a whole note chord with a slur above it. The chords are: G4 (treble), G2 (bass), G4 (treble), G2 (bass), G4 (treble), G2 (bass), G4 (treble), G2 (bass).

Handwritten musical score for the first system. The top staff is a violin part with a slur over two measures. The first measure has a note marked "di" and the second measure has a note marked "pp". Above the violin staff are two measures of a string quartet with notes marked "V" and "#0".

Handwritten musical score for the second system. The top staff is a violin part with a slur over two measures. The first measure has a note marked "pp" and the second measure has a note marked "f". Above the violin staff are two measures of a string quartet with notes marked "f" and "#0". A circled "8" is in the top right corner.

Handwritten musical score for the first system, featuring a violin part and a string quartet. The violin part begins with a treble clef and a key signature of one flat (B-flat). The first measure contains a whole note chord with notes G2, B-flat2, and D3. The second measure contains a half note chord with notes G2, B-flat2, and D3. The third measure contains a half note chord with notes G2, B-flat2, and D3. The fourth measure contains a half note chord with notes G2, B-flat2, and D3. The fifth measure contains a half note chord with notes G2, B-flat2, and D3. The sixth measure contains a half note chord with notes G2, B-flat2, and D3. The string quartet part consists of four staves, each with a whole note chord in the first measure and a whole note chord in the second measure. The chords are: Violin I (G2, B-flat2, D3), Violin II (G2, B-flat2, D3), Viola (G2, B-flat2, D3), and Violoncello (G2, B-flat2, D3).

Handwritten musical score for the second system, featuring a violin part and a string quartet. The violin part begins with a treble clef and a key signature of one flat (B-flat). The first measure contains a whole note chord with notes G2, B-flat2, and D3. The second measure contains a whole note chord with notes G2, B-flat2, and D3. The third measure contains a whole note chord with notes G2, B-flat2, and D3. The fourth measure contains a whole note chord with notes G2, B-flat2, and D3. The fifth measure contains a whole note chord with notes G2, B-flat2, and D3. The sixth measure contains a whole note chord with notes G2, B-flat2, and D3. The string quartet part consists of four staves, each with a whole note chord in the first measure and a whole note chord in the second measure. The chords are: Violin I (G2, B-flat2, D3), Violin II (G2, B-flat2, D3), Viola (G2, B-flat2, D3), and Violoncello (G2, B-flat2, D3). A circled number '9' is written in the right margin of the second system.

Handwritten musical score for the first system. The score is written on five staves. The top staff is for the violin, and the bottom four staves are for the piano accompaniment. The key signature is one sharp (F#) and the time signature is 2/4. The score includes various musical notations such as slurs, accents, and dynamic markings.

Handwritten musical score for the second system. The score is written on five staves. The top staff is for the violin, and the bottom four staves are for the piano accompaniment. The key signature is one sharp (F#) and the time signature is 2/4. The score includes various musical notations such as slurs and dynamic markings. A circled number '10' is written in the right margin.

Handwritten musical score for Violin and Cello/Double Bass. The top staff is the Violin part, and the lower staves are for the Cello and Double Bass. The score includes dynamic markings like *ppp* and *frei (erregt)*.

**Violin Part:**

- Staff 1: *frei (erregt)*. Notes: G4, A4, B4, C5, B4, A4, G4. Includes a slur over the last three notes.
- Staff 2: Notes: G4, A4, B4, C5, B4, A4, G4. Includes a slur over the last three notes.
- Staff 3: Notes: G4, A4, B4, C5, B4, A4, G4. Includes a slur over the last three notes.
- Staff 4: Notes: G4, A4, B4, C5, B4, A4, G4. Includes a slur over the last three notes.

**Cello/Double Bass Part:**

- Staff 5: *ppp* b. Notes: G2, A2, B2, C3, B2, A2, G2. Includes a slur over the last three notes.
- Staff 6: *ppp* b. Notes: G2, A2, B2, C3, B2, A2, G2. Includes a slur over the last three notes.
- Staff 7: *ppp* b. Notes: G2, A2, B2, C3, B2, A2, G2. Includes a slur over the last three notes.
- Staff 8: *ppp* b. Notes: G2, A2, B2, C3, B2, A2, G2. Includes a slur over the last three notes.

Handwritten musical score for a string quartet, page 11. The top staff features a complex rhythmic pattern with eighth notes and a triplet. The lower staves show long, sweeping lines representing string parts.

*folo (frei) subito* — *gras. rit + din*

*subito*

Handwritten musical notation for a string part, page 11. It shows a sequence of notes with dynamic markings and a hairpin symbol.

*rit + din*

Handwritten musical notation for a string part, page 11. It shows a sequence of notes with dynamic markings and a hairpin symbol.

Handwritten musical notation for a string part, page 11. It shows a sequence of notes with dynamic markings and a hairpin symbol.

leite  $\frac{8}{8}$  sehr ruhig.

~~pp~~

pp

5 10

*cresc.*

*cresc.*



Handwritten musical score for five staves. The top staff features a melodic line with notes, slurs, and dynamic markings such as *f* and *ff*. The lower four staves, likely representing a string quartet, consist of long, sustained notes with dynamic markings like *mf* and *f*.

Handwritten musical score for five staves. The top staff is labeled "pesante" and includes a circled "M". The bottom four staves show rhythmic patterns with notes and stems, possibly for a string quartet.

Handwritten musical score for the first system, measures 1-3. The score is written in a key signature of one sharp (F#). It consists of a violin part and a piano accompaniment. The piano part includes a bass line with a '2' marking and a treble line with a '1' marking. The violin part has a melodic line with a slur and a breath mark. The piano accompaniment features a rhythmic pattern of eighth notes in the bass and a more complex melodic line in the treble.

Handwritten musical score for the second system, measures 4-6. The score is written in a key signature of one flat (Bb). It consists of a violin part and a piano accompaniment. The piano part includes a bass line with 'ralli' marking and a treble line with 'pp' marking. The violin part has a melodic line with a slur and a breath mark. The piano accompaniment features a rhythmic pattern of eighth notes in the bass and a more complex melodic line in the treble.

15

Handwritten musical score for strings, measures 1-3. The score is written on five staves. The first staff has a treble clef and a key signature of one flat (B-flat). The second and third staves have alto clefs. The fourth and fifth staves have bass clefs. The music consists of sustained notes with dynamic markings like 'pp' and 'p'. There are various accidentals and slurs throughout the passage.

Handwritten musical score for solo violin, measures 4-6. The score is written on three staves. The first staff has a treble clef and a key signature of one flat. The second and third staves have alto clefs. The word "Solo" is written above the first staff. The music features a melodic line with slurs and accents, and some chords in the lower staves. Dynamic markings include "pp".

Handwritten musical score for strings, measures 7-9. The score is written on one staff with a treble clef and a key signature of one flat. The music consists of sustained notes with dynamic markings like "pp". There are various accidentals and slurs throughout the passage.

Handwritten musical score for the first system. The score is written for Violin I, Violin II, Viola, Cello, and Double Bass. The key signature is one sharp (F#) and the time signature is 3/4. The first measure features a wavy line in the Violin I staff with a sharp sign. The second measure has a rest in Violin I and eighth notes in the other staves. The third measure has a complex chord in Violin I and sustained notes in the other staves. Dynamics include ppp, p, and f.

Handwritten musical score for the second system. The score is written for Violin I, Violin II, Viola, Cello, and Double Bass. The first measure has rests in all staves. The second measure has sustained notes in all staves. The third measure has sustained notes in all staves. Dynamics include p, f, and ppp.

17

Handwritten musical score for the first system. It consists of five staves. The top staff is in treble clef and contains a melodic line with notes and accidentals, including a circled sharp sign. The word "sub6" is written above the first few notes. The bottom four staves are grouped by a brace on the left and contain sustained notes with dynamic markings like "f" and "p".

Handwritten musical score for the second system, also consisting of five staves. The top staff continues the melodic line with various accidentals and slurs. The lower staves continue with sustained notes and dynamic markings.

Handwritten musical score for the first system, consisting of five staves. The notation includes various notes, accidentals (sharps, flats, double sharps), and dynamic markings. The first staff has a *ppp* marking and a complex melodic line with a slur. The second staff has a *pp* marking and a single note. The third and fourth staves have *mp* markings and contain chords. The fifth staff has a *pp* marking and a single note. The system concludes with a double bar line.

Handwritten musical score for the second system, consisting of five staves. The notation includes rhythmic patterns, accidentals, and slurs. The first staff is mostly empty with a few notes. The second, third, and fourth staves contain rhythmic patterns with stems and flags. The fifth staff has a few notes. A circled number "18" is written in the top right corner of the system. The system concludes with a double bar line.

gr. mit - olin

COOP

Solo Violine I frei

19

Solo Violine

The image shows a handwritten musical score for a solo violin. It consists of six staves of music. The notation is in treble clef with a key signature of one sharp (F#) and a 3/4 time signature. The music includes various rhythmic patterns, such as triplets and sixteenth notes, and features dynamic markings like accents (^) and a 'b' (possibly for breath or bowing). The final measure of the sixth staff is circled and contains the number '20'.



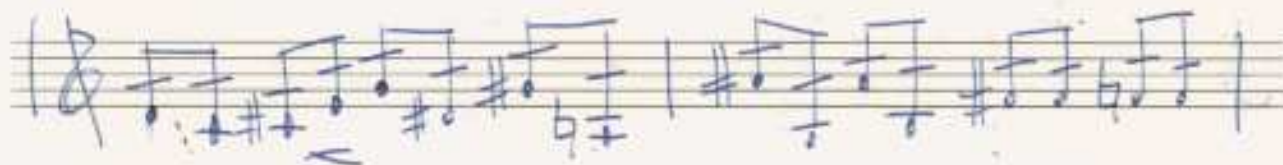
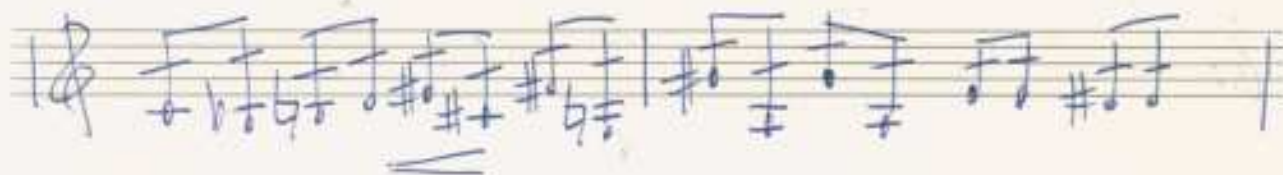
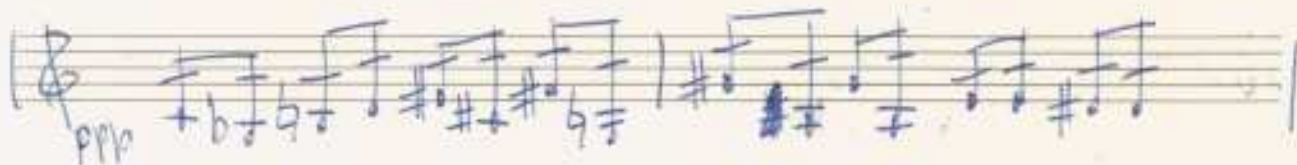
poco rit.

poco rit.

rit.

21

Presto ( sempre crescendo



Handwritten musical notation on a five-line staff. It begins with a treble clef, a 2/4 time signature, and a circled number '23'. The first measure contains a chord with notes G#4, A4, B4, and C5, with a fermata over the G#4. The second measure contains a chord with notes A4, B4, C5, and D5, also with a fermata over the A4. The third measure contains a chord with notes B4, C5, D5, and E5. The fourth measure contains a chord with notes C5, D5, E5, and F#5. The piece ends with a double bar line.

Handwritten musical notation on a five-line staff. It begins with a treble clef. The first measure contains a chord with notes G4, A4, B4, and C5. The second measure contains a chord with notes A4, B4, C5, and D5. The third measure contains a chord with notes B4, C5, D5, and E5. The fourth measure contains a chord with notes C5, D5, E5, and F#5. The piece ends with a double bar line.

Handwritten musical notation on a five-line staff. It begins with a treble clef. The first measure contains a chord with notes G4, A4, B4, and C5. The second measure contains a chord with notes A4, B4, C5, and D5. The third measure contains a chord with notes B4, C5, D5, and E5. The fourth measure contains a chord with notes C5, D5, E5, and F#5. The piece ends with a double bar line.

Handwritten musical notation on a five-line staff. It begins with a treble clef. The first measure contains a chord with notes G#4, A#4, B#4, and C5. The second measure contains a chord with notes A#4, B#4, C5, and D5. The third measure contains a chord with notes B#4, C5, D5, and E5. The fourth measure contains a chord with notes C5, D5, E5, and F#5. The piece ends with a double bar line.

Handwritten musical notation on a five-line staff. It begins with a treble clef. The first measure contains a chord with notes G#4, A#4, B#4, and C5. The second measure contains a chord with notes A#4, B#4, C5, and D5. The third measure contains a chord with notes B#4, C5, D5, and E5. The fourth measure contains a chord with notes C5, D5, E5, and F#5. The piece ends with a double bar line and a circled number '23'.

*attaca!* D.C. Teil 1

al  $\frac{2}{4}$  con  $\uparrow$

*noch steigern bis Prestissimo*

*CODA subito Presto*

*fff (auf 4)*

Handwritten musical score for the first system. The top staff is a single treble clef staff. The bottom four staves are a grand staff (two bass clef staves). The notation includes chords, stems, and beams, with a sharp sign (#) appearing in the treble staff.

Handwritten musical score for the second system, labeled with a circled 'B'. The top staff is a single treble clef staff. The bottom four staves are a grand staff (two bass clef staves). The notation includes chords, stems, and beams, with a sharp sign (#) and a flat sign (b) appearing in the treble staff.



# Prestissimo (so rasch als möglich)

Violin part: Treble clef, key signature of one sharp (F#). The melody consists of eighth notes with accents. The piano accompaniment includes a right hand with chords and a left hand with sustained notes. A circled '2' is written above the piano part.

Violin part: Treble clef, key signature of one sharp (F#). The melody consists of eighth notes with accents. The piano accompaniment includes a right hand with chords and a left hand with sustained notes. A circled 'D' is written above the piano part.

Handwritten musical score for the first system. The top staff is for the violin, showing a melodic line with a slur and a fermata. The bottom four staves are for the strings, each with a single note and a long horizontal line indicating a sustained sound.

Handwritten musical score for the second system. The violin part has a complex melodic line with many accidentals and a fermata. The string parts have notes with slurs and fermatas. The word "lunge" is written in the second staff, and "halten" is written in the third staff. The word "Tutti" is written in the right margin, and "Konzert" is written below it. The year "1971" is written in the bottom right corner.