

Notenheft

Konzept in einem Satz
für Violine

und Streichorchester

1971

Adagio

Allegro

Handwritten musical score for four staves. The staves are labeled on the left as follows: *Cl*, *2V*, *Br.* (with the note "(in 7. uakt.)"), and *CTB*. Above the first staff, there are several upward-pointing triangles (^) and a colon (:). Above the second staff, there are four upward-pointing triangles (^). Above the third staff, there are four upward-pointing triangles (^). Above the fourth staff, there are three upward-pointing triangles (^) and the label "CTB". The notation includes various rhythmic values, accidentals (sharps and naturals), and dynamic markings.

1

Handwritten musical score for two systems. The first system consists of two staves with notes, rests, and dynamic markings like *pp* and *ppp*. The second system also consists of two staves with notes and rests. The notation is dense and includes various musical symbols.

Handwritten musical notation on four staves. The first staff has a treble clef and contains a sequence of notes with stems and flags. The second staff has a bass clef and contains a similar sequence of notes. The third and fourth staves are mostly empty with some faint markings. A double bar line is present between the first and second staves.

Handwritten musical notation on four staves. The first staff has a treble clef and contains a sequence of notes with stems and flags. The second staff has a bass clef and contains a similar sequence of notes. The third and fourth staves are mostly empty with some faint markings. A double bar line is present between the first and second staves.

2

Solo

1st Vn

2nd Vn

Br

Ctrb

3

Handwritten musical score for the first system. It consists of a grand staff with treble and bass clefs, and two staves with guitar-specific notation. The notation includes plus signs (+) and slurs. The first staff has a treble clef and a key signature of one flat (Bb). The second staff has a bass clef and a key signature of one flat (Bb). The third and fourth staves have a bass clef and a key signature of one sharp (F#). The notation includes various chords and melodic lines.

Handwritten musical score for the second system. It consists of a grand staff with treble and bass clefs, and two staves with guitar-specific notation. The notation includes circled numbers 1, 2, 3, 4, and 5. The first staff has a treble clef and a key signature of one sharp (F#). The second staff has a bass clef and a key signature of one sharp (F#). The third and fourth staves have a bass clef and a key signature of one sharp (F#). The notation includes various chords and melodic lines.

Handwritten musical score for the first system. The top staff is in treble clef with a key signature of one sharp (F#). The bottom staff is in bass clef with a key signature of one flat (Bb). The treble staff contains a melodic line with various accidentals and a fermata. The bass staff contains a complex rhythmic accompaniment with many sixteenth notes and slurs.

Handwritten musical score for the second system. The top staff is in treble clef with a key signature of one flat (Bb). The bottom staff is in bass clef with a key signature of one flat (Bb). The treble staff contains a melodic line with a circled '5' at the end. The bass staff contains a complex rhythmic accompaniment with many sixteenth notes and slurs.

Musical notation on a single staff, featuring a sequence of notes with various accidentals (sharps and naturals) and a triplet of eighth notes marked with the number '3' below.

Four staves of musical notation, each starting with a treble clef and the instruction "H (pizz)". The notation includes rhythmic patterns and accidentals, with some notes marked with slurs and accents.

6

Musical notation on a single staff, featuring a sequence of notes with various accidentals and a final section with a key signature change to two flats (B-flat and E-flat) and a common time signature 'C'.

Four staves of musical notation, each starting with a treble clef and the instruction "H (pizz)". The notation includes rhythmic patterns and accidentals, with some notes marked with slurs and accents.

Handwritten musical score for the first system. The top staff is in treble clef and contains a melodic line with a slur over the first two notes, a sharp sign, and a downward-pointing arrow. Above the staff, there are handwritten notes: $\# \# \flat + \#$ and $\# \# \flat \# \#$. The grand staff below consists of four staves, each starting with a piano (*pp*) dynamic marking and a sharp sign, followed by a long note with a slur.

Handwritten musical score for the second system. The top staff is in treble clef and contains a complex melodic line with a slur, a circled sharp sign, and a downward-pointing arrow. Above the staff, there are handwritten notes: $\# \# \flat \# \#$ and $\# \# \flat \# \#$. The grand staff below consists of four staves, each starting with a piano (*pp*) dynamic marking and a sharp sign, followed by a long note with a slur.

Handwritten musical score, first system. It consists of five staves. The top staff is a grand staff (treble and bass clefs) with notes and accidentals. Below it are four staves, likely for strings, with notes and accidentals. A large slur covers the first two staves. Dynamics include *pp* and *f*. A circled number '8' is written at the end of the system.

Handwritten musical score, second system. It consists of five staves. The top staff is a grand staff with notes and accidentals. Below it are four staves with notes and accidentals. Dynamics include *pp*, *f*, and *f*. A circled number '8' is written at the end of the system.

Handwritten musical score for the first system. The top staff is in treble clef and contains several measures of music with complex chords, including a triad with a flat (F, A, C) and a chord with four sharps (F#, C#, G#, D#). The bottom four staves are grouped together, likely representing a grand staff or multiple voices. The first two staves have a treble clef, and the last two have a bass clef. The music consists of long, sustained notes with various accidentals (flats and sharps) and dynamic markings like 'V'.

Handwritten musical score for the second system. The top staff is in treble clef and contains several measures of music with complex chords, including a triad with three sharps (F#, C#, G#) and a chord with four sharps (F#, C#, G#, D#). The bottom four staves are grouped together, likely representing a grand staff or multiple voices. The first two staves have a treble clef, and the last two have a bass clef. The music consists of long, sustained notes with various accidentals (flats and sharps) and dynamic markings like 'V'. A circled number '9' is written in the right margin of this system.

Handwritten musical score for the first system. It begins with a treble clef and a key signature of one sharp (F#). The score is written on five staves. The top staff contains the main melodic line with various ornaments and slurs. The lower four staves are grouped by a brace and represent a piano accompaniment, with the bottom-most staff likely being the bass line. The music is divided into two measures by a double bar line. The notation includes notes, rests, slurs, and various accidentals.

10

Handwritten musical score for the second system, continuing from the first system. It features a grand staff with piano accompaniment. The notation includes notes, rests, slurs, and various accidentals. The system is divided into two measures by a double bar line. The piano accompaniment is written across four staves, with the bottom-most staff being the bass line.

f *res* (*overst*)

ppp *b*

ppp *b*

ppp

ppp *b*

Handwritten musical notation on a single staff. It begins with a treble clef and a key signature of one flat (Bb). The notation consists of several groups of notes, some with stems pointing up and some with stems pointing down. There are annotations above the staff: a circled '8' with a horizontal line, and another '8' with a horizontal line. A circled '11' is written in the upper right corner. The piece concludes with a double bar line and a final note.

Four empty musical staves, likely intended for accompaniment or other parts of the composition.

Handwritten musical notation on a single staff. It starts with a treble clef and a key signature of two sharps (F# and C#). The notes are mostly quarter notes with stems pointing down. Above the staff, the text "Solo (frei) subito" is written, followed by a horizontal line. Further to the right, the text "gras. rit + dim" is written above a note with an accent (^) above it.

Handwritten musical notation on a single staff. It begins with a treble clef and a key signature of two sharps. The notes are quarter notes with stems pointing down. A circled box containing the text "rit + dim" is positioned above the first few notes. The staff ends with a double bar line.

Handwritten musical notation on a single staff. It starts with a treble clef and a key signature of two sharps. The notation includes a long note with a slur over it, followed by several quarter notes. A circled '12' is in the upper right corner. The piece ends with a double bar line and a final note.

Leute $\frac{8}{8}$ sehr ruhig

Handwritten musical score for the first system, measures 1-2. The score is written on five staves. The first staff has a treble clef and a key signature of one sharp (F#). The second staff has a treble clef and a key signature of one sharp. The third staff has a treble clef and a key signature of one sharp. The fourth staff has a bass clef and a key signature of one sharp. The fifth staff has a bass clef and a key signature of one sharp. The first measure contains a whole note chord in the first staff and a whole note chord in the second staff. The second measure contains a half note chord in the first staff and a half note chord in the second staff. The dynamic marking *pp* is written in the first measure. The key signature is indicated by a sharp sign in the first measure.

Handwritten musical score for the second system, measures 3-4. The score is written on five staves. The first staff has a treble clef and a key signature of one sharp. The second staff has a treble clef and a key signature of one sharp. The third staff has a treble clef and a key signature of one sharp. The fourth staff has a bass clef and a key signature of one sharp. The fifth staff has a bass clef and a key signature of one sharp. The first measure contains a whole note chord in the first staff and a whole note chord in the second staff. The second measure contains a half note chord in the first staff and a half note chord in the second staff. The dynamic marking *pp* is written in the first measure. The dynamic marking *mf* is written in the second measure. The key signature is indicated by a sharp sign in the first measure. A circled number 13 is written in the first measure of the first staff.

Handwritten musical score for the first system. It consists of five staves. The top staff is a single melodic line with a treble clef, starting with a circled *pp* dynamic marking. It features a series of notes with various accidentals (flats and naturals) and is heavily phrased with long, sweeping lines. The lower four staves are grouped by a brace on the left and contain chordal accompaniment, with notes and accidentals corresponding to the upper line.

Handwritten musical score for the second system, also consisting of five staves. The top staff begins with the instruction *cresc.* and continues with a melodic line similar in style to the first system. The lower four staves provide accompaniment. The notation is dense and expressive, with many slurs and dynamic markings.

Handwritten musical score for a string quartet, measures 1-2. The score is written on five staves. The first staff (Violin I) has a melodic line starting with a sharp sign and an accent (^) over the first note. The second staff (Violin II) has a lower melodic line. The third staff (Viola) has a line with a sharp sign and an accent (^) over the first note. The fourth staff (Cello) has a line with a flat sign and an accent (^) over the first note. Dynamics include 'f' and 'ff ='. There are various slurs and phrasing marks throughout the staves.

Handwritten musical score for a string quartet, measures 3-4. The score is written on five staves. The first staff (Violin I) has a melodic line starting with the word "pesante" and a sharp sign. A circled "M" is written in the right margin. The second staff (Violin II) has a melodic line with a sharp sign and an accent (^) over the first note. The third staff (Viola) has a line with a sharp sign. The fourth staff (Cello) has a line with a sharp sign. The fifth staff (Double Bass) has a line with a sharp sign. Dynamics include "f". There are various slurs and phrasing marks throughout the staves.

Handwritten musical score for the first system. It consists of five staves. The top staff is a vocal line with a treble clef and a key signature of one sharp (F#). The accompaniment is written for piano on four staves (treble and bass clefs). The music includes various notes, rests, and dynamic markings such as pp and ppp . There are also some handwritten annotations like "1." and "2." near the piano part.

15

Handwritten musical score for the second system, starting at measure 15. It features a vocal line and a piano accompaniment. The vocal line has a treble clef and a key signature of one flat (Bb). The piano accompaniment is on four staves. The music is characterized by long, sustained notes and rests. Dynamic markings include pp and ppp . The word "marcato" is written in the piano part, indicating a change in articulation.

Handwritten musical score for a string quartet, measures 1-4. The score is written on four staves. The first staff has a treble clef and a key signature of one flat (B-flat). The second and third staves have treble clefs and a key signature of one sharp (F-sharp). The fourth staff has a bass clef and a key signature of one flat (B-flat). The music features various notes, rests, and dynamic markings such as "pp" and "p". There are also some handwritten annotations above the staves.

Handwritten musical score for a string quartet, measures 5-6. The first staff has a treble clef and a key signature of one sharp (F-sharp). The second staff has a bass clef and a key signature of one sharp (F-sharp). The music includes notes, rests, and dynamic markings like "pp". There are also some handwritten annotations above the staves.

Handwritten musical score for a string quartet, measures 7-8. The first staff has a treble clef and a key signature of one sharp (F-sharp). The second staff has a bass clef and a key signature of one sharp (F-sharp). The music includes notes, rests, and dynamic markings like "pp". There are also some handwritten annotations above the staves.

Handwritten musical score for a string quartet, measures 9-10. The first staff has a treble clef and a key signature of one sharp (F-sharp). The second staff has a bass clef and a key signature of one sharp (F-sharp). The music includes notes, rests, and dynamic markings like "pp". There are also some handwritten annotations above the staves.

Handwritten musical score for the first system, consisting of five staves. The notation includes various notes, rests, and dynamic markings. A circled chord diagram is present in the top staff. The dynamic markings include *ppp* and *p*.

17

Handwritten musical score for the second system, consisting of five staves. The notation includes various notes, rests, and dynamic markings. The dynamic marking *p* is used throughout the system.

Handwritten musical score for the first system, consisting of five staves. The top staff is a vocal line with a treble clef, a key signature of one sharp (F#), and a tempo marking of *♩ = 120*. The word "solo" is written above the first measure. The melody consists of several notes with slurs and a fermata over the final note. The lower four staves are piano accompaniment, with a grand staff (treble and bass clefs) and a dynamic marking of *p*. The piano part features sustained chords and a bass line with a fermata over the final note. A circled key signature of one sharp is present in the first measure of the piano part.

Handwritten musical score for the second system, consisting of five staves. The top staff continues the vocal line with a treble clef and a key signature of one sharp. The melody includes a fermata over the final note. The lower four staves continue the piano accompaniment with a grand staff and a dynamic marking of *p*. The piano part features sustained chords and a bass line with a fermata over the final note. A circled key signature of one sharp is present in the first measure of the piano part.

Handwritten musical score for five staves. The top staff has a treble clef and a key signature of one flat (Bb). It contains a melodic line with notes and accidentals (sharps and flats) and dynamic markings 'ppp' and 'p'. The second staff has a treble clef and a key signature of one sharp (F#), with dynamic markings 'pp' and 'p'. The third staff has a treble clef and a key signature of one flat (Bb), with dynamic markings 'pp' and 'p'. The fourth staff has a bass clef and a key signature of one sharp (F#), with dynamic markings 'pp' and 'p'. The fifth staff has a bass clef and a key signature of one sharp (F#), with dynamic markings 'pp' and 'p'. The staves are connected by a large bracket on the left side.

18

Handwritten musical score for four staves. The top staff has a treble clef and a key signature of one sharp (F#). The second staff has a treble clef and a key signature of one sharp (F#). The third staff has a bass clef and a key signature of one sharp (F#). The fourth staff has a bass clef and a key signature of one sharp (F#). The staves are connected by a large bracket on the left side.

gr. rif - ottim $\frac{1}{2}$ coda

A handwritten musical score for a string quartet and woodwinds. The score is written on five staves. The top staff is for the first violin, the second for the second violin, the third for the viola, and the fourth for the cello. The fifth staff is for the woodwinds. The music is in a key with one sharp (F#) and a 2/4 time signature. The first two measures show a melodic line in the first violin and a rhythmic accompaniment in the second violin. The woodwinds enter in the second measure with a melodic line. The score is marked with dynamics such as *ppp* and *ppp*. There are also some handwritten annotations and a circled '4' in the first measure of the woodwind staff.

folo Violina (Pesi)

A handwritten musical score for Violin I. The score is written on a single staff. The music is in a key with one sharp (F#) and a 2/4 time signature. The first measure shows a melodic line with a circled '4' and a sharp sign. The second measure shows a melodic line with a sharp sign. The third measure shows a melodic line with a sharp sign. The fourth measure shows a melodic line with a sharp sign. The score is marked with dynamics such as *ppp* and *ppp*. There are also some handwritten annotations and a circled '4' in the first measure.

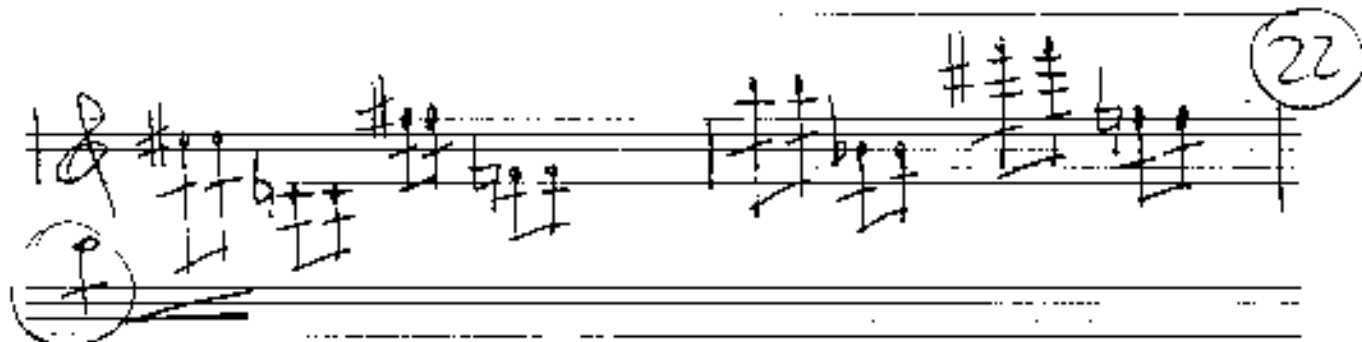
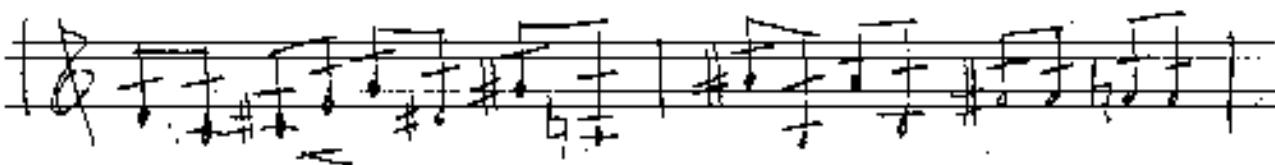
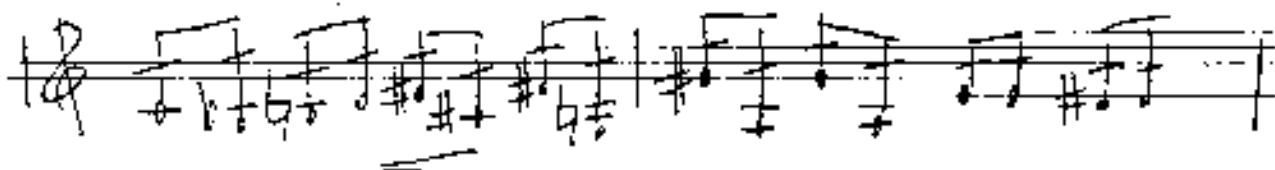
A handwritten musical score for Violin II. The score is written on a single staff. The music is in a key with one sharp (F#) and a 2/4 time signature. The first measure shows a melodic line with a sharp sign. The second measure shows a melodic line with a sharp sign. The third measure shows a melodic line with a sharp sign. The fourth measure shows a melodic line with a sharp sign. The score is marked with dynamics such as *ppp* and *ppp*. There are also some handwritten annotations and a circled '4' in the first measure.

19

A handwritten musical score for Violin III. The score is written on a single staff. The music is in a key with one sharp (F#) and a 2/4 time signature. The first measure shows a melodic line with a sharp sign. The second measure shows a melodic line with a sharp sign. The third measure shows a melodic line with a sharp sign. The fourth measure shows a melodic line with a sharp sign. The score is marked with dynamics such as *ppp* and *ppp*. There are also some handwritten annotations and a circled '4' in the first measure.

Solo Violine

Presto (sempre crescendo



Handwritten musical notation on a five-line staff. It begins with a treble clef and a circled number '23'. The notation includes several chords with accidentals (sharps and naturals) and some notes with accents (^) above them. The staff is part of a larger system with empty staves above and below.

Handwritten musical notation on a five-line staff, continuing the piece. It features chords with various accidentals and some notes with slurs underneath. The staff is part of a larger system with empty staves above and below.

Handwritten musical notation on a five-line staff, continuing the piece. It features chords with various accidentals and some notes with slurs underneath. The staff is part of a larger system with empty staves above and below.

Handwritten musical notation on a five-line staff, continuing the piece. It features chords with various accidentals and some notes with slurs underneath. The staff is part of a larger system with empty staves above and below.

Handwritten musical notation on a five-line staff, concluding the piece. It features chords with various accidentals and some notes with slurs underneath. A circled number '23' is at the end of the staff. The staff is part of a larger system with empty staves above and below.

attaca! D.C. Teil 1

al $\frac{3}{4}$ 10017

noch steigern bis fortissimo

CODA
subito **Presto**

mf *mf* *f*

ang 4

Handwritten musical score for the first system. The top staff is in treble clef and contains a melodic line with several chords and a final note. Below it are four bass clef staves, grouped by a brace on the left, containing accompaniment with various chords and melodic lines. The notation includes various symbols such as sharps, flats, and slurs.

(B)

Handwritten musical score for the second system. The top staff is in treble clef and contains a melodic line with various chords and a final note. Below it are four bass clef staves, grouped by a brace on the left, containing accompaniment with various chords and melodic lines. The notation includes various symbols such as sharps, flats, and slurs. A circled 'B' is located at the end of the first staff.

Handwritten musical score for the first system. The top staff is a vocal line with a treble clef, a key signature of one sharp (F#), and a common time signature (C). It contains two measures: the first has a half note with a sharp sign, and the second has a half note with a sharp sign and a slur above it. Below the vocal line are four guitar staves, each with a treble clef and a common time signature. The first guitar staff has a 4/4 time signature. The second and third guitar staves have a 4/4 time signature. The fourth guitar staff has a 4/4 time signature. The guitar staves contain rhythmic notation with stems and flags, and some accidentals. A large bracket on the left side groups the four guitar staves. A circled 'C' is written at the end of the system.

Handwritten musical score for the second system. The top staff is a vocal line with a treble clef, a key signature of one sharp (F#), and a common time signature (C). It contains two measures: the first has a half note with a sharp sign, and the second has a half note with a sharp sign and a slur above it. Below the vocal line are four guitar staves, each with a treble clef and a common time signature. The first guitar staff has a 4/4 time signature. The second and third guitar staves have a 4/4 time signature. The fourth guitar staff has a 4/4 time signature. The guitar staves contain rhythmic notation with stems and flags, and some accidentals. A large bracket on the left side groups the four guitar staves. A circled 'C' is written at the end of the system.

Prostianius (no name als mäplich)

Handwritten musical score for the first system. The treble clef staff has a key signature of one sharp (F#) and a common time signature (C). The melody consists of quarter notes with accents. The piano accompaniment is in bass clef with a key signature of one flat (Bb) and a common time signature (C), featuring half notes with accents. A circled '2' is written in the piano part.

Handwritten musical score for the second system. The treble clef staff has a key signature of one sharp (F#) and a common time signature (C). The melody consists of quarter notes with accents. The piano accompaniment is in bass clef with a key signature of one flat (Bb) and a common time signature (C), featuring half notes with accents. A circled '1' is written in the piano part.

Handwritten musical score for the first system. The top staff is in treble clef and contains a melodic line with several chords marked with asterisks. Below it are four bass clef staves, each containing a single note with a long horizontal line underneath, indicating sustained notes.

Handwritten musical score for the second system. The top staff is in treble clef and contains a melodic line with a large slur over the first measure and various chords. Below it are four bass clef staves with sustained notes. Dynamic markings 'p' and 'f' are present. The word 'lange' is written in the second measure of the bass staves, and 'halten' is written in the third measure.

Tue
 Kungsh
 1871