

L.v. BEETHOVEN



W.A. MOZART



# NOTENHEFT

---

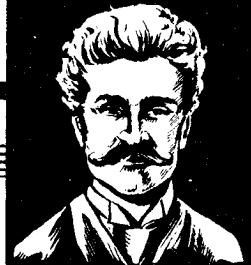
F. SCHUBERT



J. HAYDN



J. STRAUSS



MADE IN AUSTRIA

Mod. arrani

(1)

H. Scherbaum

Konzert (1 Satz) für Klavier und Bläser (1972)

(1)

Solo

Vom Menschen - dessen Fall und Heil in Christo...

2TR. *in C*

4Hörn *belimpert und*

3Pos

Tuba

~~ansord~~

~~ansord~~

~~ansord~~

Blode (A)

(2)

pp

ff >

ff >

ff >

~~ansord~~

~~ansord~~

Blode (B)

pp

Handwritten musical score for Block A, measures 1-3. The score is written on three staves (treble, alto, and bass clefs). It includes various musical notations such as notes, rests, and dynamic markings like *p* and *f*. A circled number '3' is in the top right corner.

Block A

Handwritten musical score for Block B, measures 4-6. The score is written on three staves. It includes musical notations such as notes, rests, and dynamic markings like *mf*, *f*, and *pp*. A circled number '4' is in the top right corner.

Block B

Handwritten musical score for Block C, measures 7-9. The score is written on three staves. It includes musical notations such as notes, rests, and dynamic markings like *f* and *pp*. A circled number '5' is in the top right corner.

Block C

legg. →

Handwritten musical score for measures 6 and 7. Measure 6 features a piano (p) dynamic and a 'Block' annotation. Measure 7 features a piano (p) dynamic and a circled '6'.

Handwritten musical score for measures 8 and 9. Measure 8 features a piano (p) dynamic and a 'Block' annotation. Measure 9 features a piano (p) dynamic, a circled '7', and a 'Pedal on' annotation.

Handwritten musical score for measures 10 and 11. Measure 10 features a piano (pp) dynamic and a 'Block' annotation. Measure 11 features a piano (pp) dynamic and a circled '8'.

⑧ Pedal

♩  $\frac{4}{4}$   $\frac{3}{4}$

pp

Block (B)

Pedal

♩  $\frac{4}{4}$   $\frac{3}{4}$

mp

Block (B)

Block (B)

Handwritten musical score for measures 11 and 12. The notation includes treble and bass staves with various notes, rests, and dynamic markings. A circled measure number '11' is at the start, and a circled measure number '12' is at the end. The text 'din (Block B)' is written below the staff.

Handwritten musical score for measures 12 and 13. The notation includes treble and bass staves with notes, rests, and dynamic markings. A circled measure number '12' is at the start, and a circled measure number '13' is at the end. The text '(poco rit. - - -)' is circled in the middle. The text 'Block (B)' is written below the staff. There are some scribbled-out areas on the right side.

Handwritten musical score for measures 13 and 14. The notation includes treble and bass staves with notes, rests, and dynamic markings. A circled measure number '13' is at the start, and a circled measure number '14' is at the end. The text 'Solo' is circled on the left. The text 'sehr ruhig' is circled above the staff. The text 'sehr frei' and 'gestalten mit Gefühl' are written above the staff. The text 'Pavane' is written below the staff. There is a circled 'aus' at the end.

14

15

Pedal

16

P

17

Pedal

Schubert (Zeit)

18

P

sehr leicht (wie Hand)

19

3TR  
4H  
3Pos + Tuba

pp =  $\frac{2}{3}$   $\frac{4}{4}$   $\frac{3}{4}$  = p

Block (C)

sehr ruhig (frei -)

Solo

pp  $\frac{5}{4}$   $\frac{3}{4}$   $\frac{1}{8}$   $\frac{8}{8}$

Block (C)

20

pp  $\frac{5}{4}$   $\frac{3}{4}$   $\frac{1}{8}$   $\frac{8}{8}$

Pedal

Zeit

Block (C)

21

CODA



21 Solo (frei gestaltet)

sehr bewegt (erregt)

pp =

pp <

22

23

24

mf

25

f

777

Handwritten musical score for measures 26 and 27. Measure 26 is circled at the top. Measure 27 is circled at the top right. The score is written on a grand staff with treble and bass clefs. Measure 26 contains a complex chordal texture with many notes. Measure 27 features a long, sustained note in the right hand and a chord in the left hand.

Handwritten musical score for measures 28 and 29. Measure 28 is circled at the top. Measure 29 is circled at the top right. The score is written on a grand staff. Measure 28 has a melodic line in the right hand and a dense chordal texture in the left hand. Measure 29 continues the texture with some melodic movement in the right hand.

Handwritten musical score for measure 30. Measure 30 is circled at the top right. The score is written on a grand staff. The measure is marked with a long slur over the right hand and the word "grauschend" written above it. The left hand has a dense chordal texture. There are dynamic markings like *mf* and *dim*.

Handwritten musical score for measure 31. Measure 31 is circled at the top right. The score is written on a grand staff. The measure is marked with a long slur over the right hand and the word "(26 + gut)" written below it. The left hand has a dense chordal texture. There are dynamic markings like *mf* and *p*.

31. (sehr langsam - frei - ruhig)

32

Solo

3TR

4H

3Pos + Tuba

33

Solo

3TR

4H

3Pos + Tuba

letzten 3 Takte nochmals

Pedal

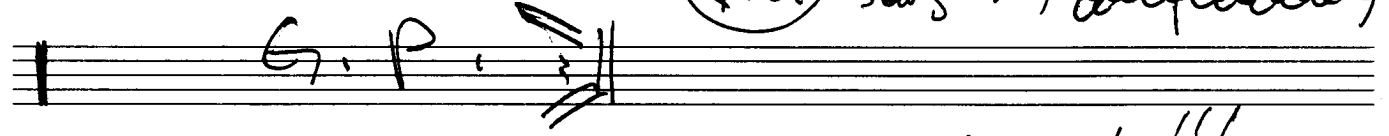
Lunga

Pedal aus

hier  
~~Es folgt~~ folgt eine  
 Kadenz --  
 dann G.P. ~~alt~~ Coda

(34)

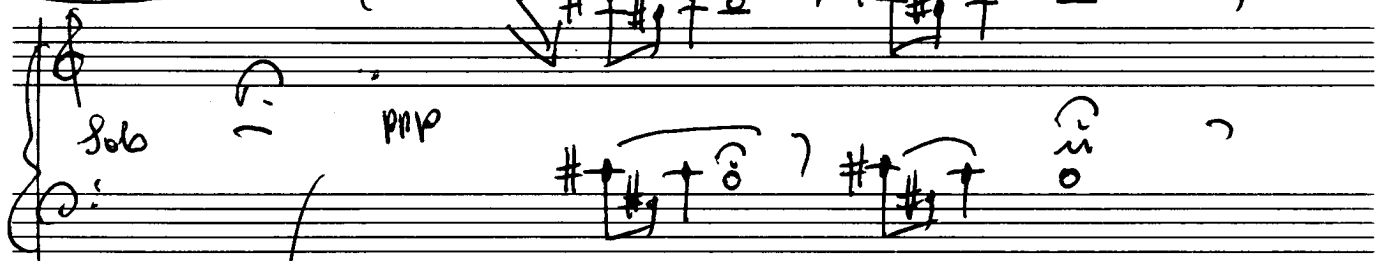
(F.C. Satz 1)



Leute (CODA)

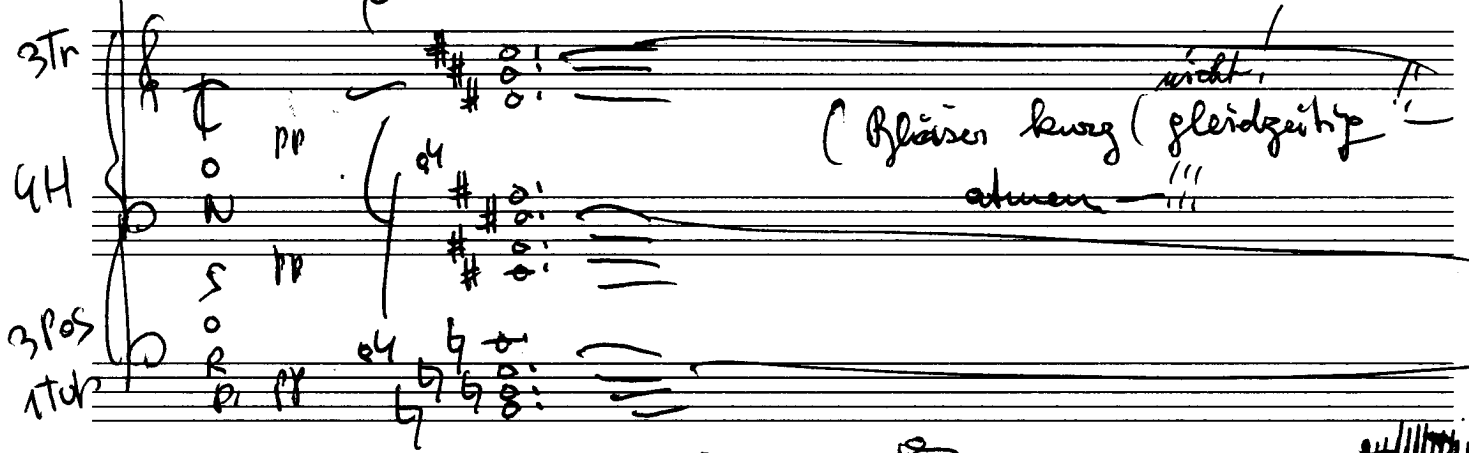
Satz 1. Schluß des Konzertes!!!

(ganz frei)



Solo

ppp



3Tr

4H

3Pos

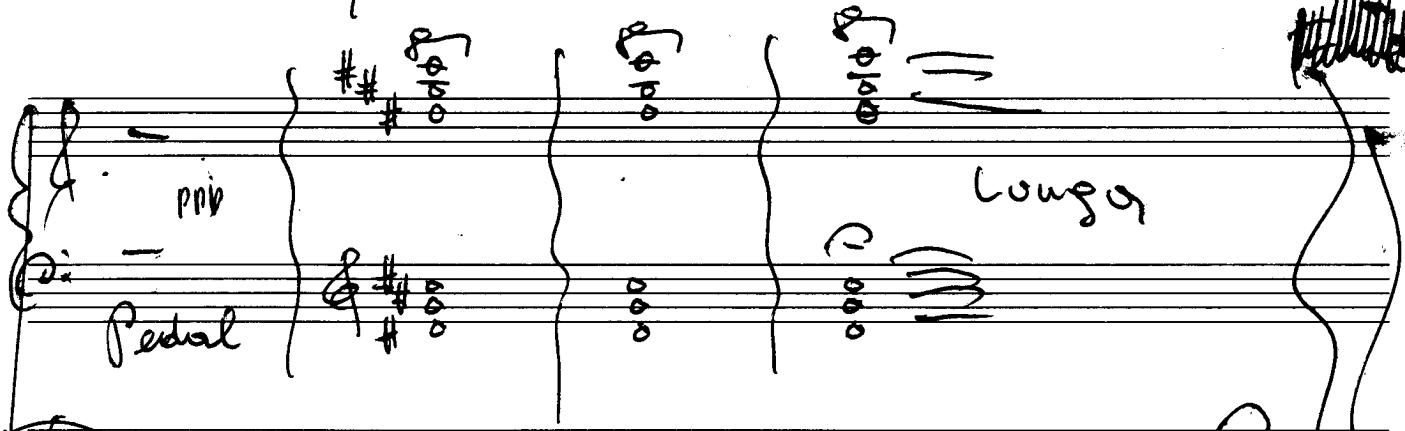
1tr

pp

pp

pp

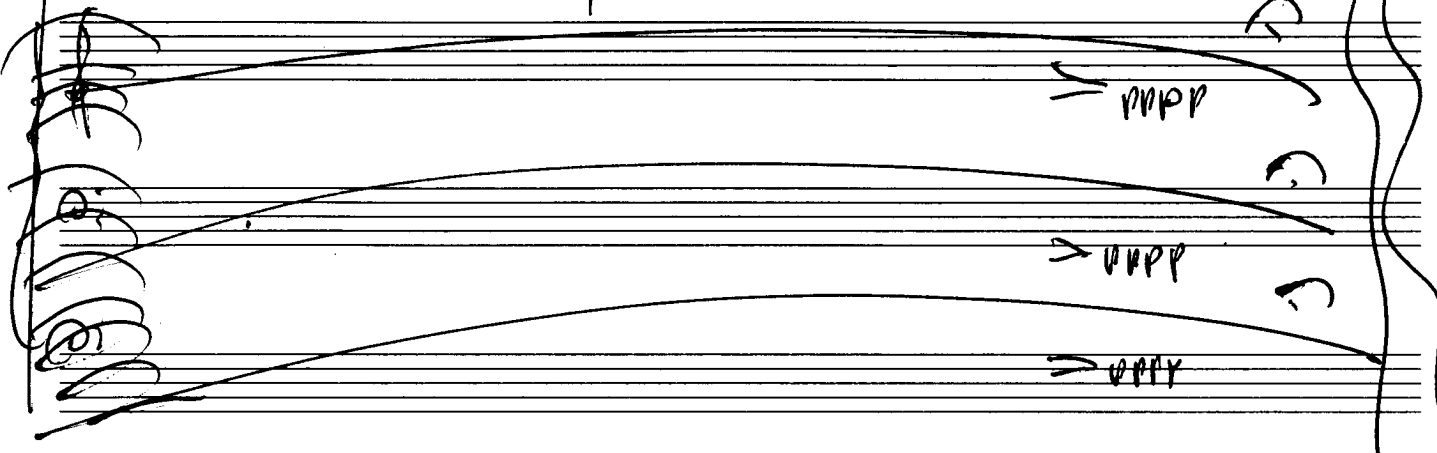
(Bläser kurz (gleichzeitig) nicht atmen!!!)



ppp

Pedal

lunga



pppp

pppp

pppp

FINE

*Kadenzen*

*graus frei gestalten*  
*Lento religioso*

*Lento* *zart*

*vorwärts*

ruhig beginnen →

Tempo steigend (bis Prestissimo) - 711

Handwritten musical score for the first system, measures 1-4. The right hand has chords with accents. The left hand has a bass line with a "Pedal" marking and a circled "4" at the end.

Handwritten musical score for the second system, measures 5-8. The right hand has a melodic line with slurs and accents. The left hand has a bass line with slurs and accents. A circled "H" is at the end.

Handwritten musical score for the third system, measures 9-12. The right hand has a melodic line with slurs and accents. The left hand has a bass line with slurs and accents. A circled "5" is at the end.

Handwritten musical score for the fourth system, measures 13-16. The right hand has chords with slurs and accents. The left hand has a bass line with slurs and accents. A circled "6" is at the end.

8/

Pedal

(L)

letzten 4 Takte modials

(M)

letzten 4 Takte modials

(N)

folgt nach G.P. Anfang bis zum großen

Pedal

G.P.

(O)



~~OP. 104~~ (oder Konzert)

lento sehr langsam frei

Beginn nur als Coda gestrichelt!!

Beginn des Konzertes

frei (lento, frei gehalten) (siehe Hall, Achtelnote = Solo wichtig vorwärts)

STR  
4H  
3Pos  
1Tub

pp < p < f < ff < p < pp

rubato

FINE

FINE

D.C. al Fine

Klangfarben!!!