

L.v. BEETHOVEN



W.A. MOZART



NOTENHEFT

F. SCHUBERT



J. HAYDN



J. STRAUSS



MADE IN AUSTRIA

Mod. arrivi

(1)

A. Scherbaum

Konzert (1 Satz) für Klavier und Bläser (1972)

(1)

Solo

2TR. in C

4Hörn. *belimpert und*

3Pos. Tuba

Vom Menschen - dessen Fall und Heil in Christo.....

~~consord.~~

~~consord.~~

~~consord.~~

~~consord.~~

Blode (A)

(2)

~~consord.~~

~~consord.~~

~~consord.~~

~~consord.~~

Blode (B)

Handwritten musical score for Block A, measures 1-4. The score is written on three staves: Treble clef (top), Bass clef (middle), and Piano (bottom). The music includes various notes, rests, and dynamic markings such as *p* and *f*. A circled number '3' is in the top right corner. The label 'Block A' is written at the bottom of the system.

Handwritten musical score for Block A, measures 5-8. The score is written on three staves: Treble clef (top), Bass clef (middle), and Piano (bottom). The music includes various notes, rests, and dynamic markings such as *mf*, *f*, and *p*. A circled number '4' is in the top right corner. The label 'Block A' is written at the bottom of the system.

Handwritten musical score for Block B, measures 9-12. The score is written on three staves: Treble clef (top), Bass clef (middle), and Piano (bottom). The music includes various notes, rests, and dynamic markings such as *f* and *p*. A circled number '5' is in the top right corner. The label 'Block B' is written at the bottom of the system.

legg. →

Handwritten musical score for Block 6, measures 1-4. The notation includes a grand staff with treble and bass clefs. The music features complex chords and melodic lines. A circled '6' is in the top right. The word 'Block 6' is written at the bottom of the system.

Handwritten musical score for Block 7, measures 1-4. The notation includes a grand staff with treble and bass clefs. The music features complex chords and melodic lines. A circled '7' is in the top right. The word 'Block 7' is written at the bottom of the system. The word 'Pedal' is written above the first measure.

Handwritten musical score for Block 8, measures 1-4. The notation includes a grand staff with treble and bass clefs. The music features complex chords and melodic lines. A circled '8' is in the top right. The word 'Block 8' is written at the bottom of the system. The word 'pp' is written in a circle at the bottom left.

⑧ Pedal

♩ ϕ ars ⑨

pp =

Block (B)

(P) =

Pedal

♩ ϕ ars ⑩

mf =

Block (B)

(P) =

ff =

Block (B)

ff

Handwritten musical score for measures 11 and 12. The notation includes treble and bass clefs, notes, rests, and dynamic markings. A circled measure number '11' is at the beginning, and a circled measure number '12' is at the end. The word 'din (Block B)' is written in the middle of the system.

Handwritten musical score for measures 12 and 13. The notation includes treble and bass clefs, notes, rests, and dynamic markings. A circled measure number '13' is at the end. The word 'Block (B)' is written in the middle of the system. There are some scribbled-out notes on the right side.

Handwritten musical score for measures 13 and 14. The notation includes treble and bass clefs, notes, rests, and dynamic markings. A circled measure number '14' is at the end. The word 'Solo' is written in a circle on the left. The word 'Pedal' is written at the bottom left. The phrase 'sehr ruhig' is circled and written above the staff. The phrase 'sehr frei gestalten mit Gefühl' is written above the staff. The word 'aus' is written at the bottom right.

14

15

16

17

Scherzhaft

(Zeit)

18

sehr leicht (wie Hand)

19

3TR
4H
3Pos + Tuben

C
o
N
S
o
R
P

pp =
pp =
pp =

23
24
23

Block C

sehr ruhig (frei -)

persönlich

Solo

pp
pp

zart

pp

Block C

20

pp

pp

ff

ff

Pedal

git

pp

pp

Block C

21

CODA

21 Solo (frei gestaltet)
 sehr bewegt (erregt)

Handwritten musical score for measures 26 and 27. Measure 26 is circled. The notation includes a treble clef with a key signature of one sharp (F#) and a bass clef. Measure 27 is also circled and features a fermata over the final note.

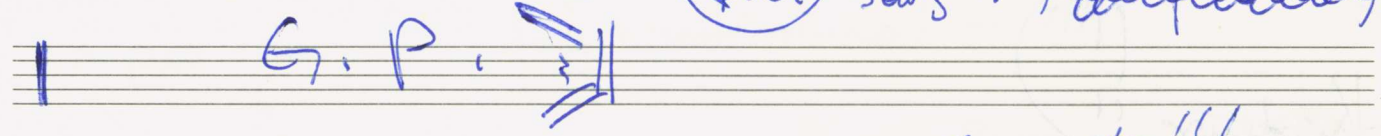
Handwritten musical score for measures 28 and 29. Measure 28 is circled. The notation includes a treble clef with a key signature of one sharp (F#) and a bass clef. Measure 29 is also circled and features a fermata over the final note.

Handwritten musical score for measure 30. The notation includes a treble clef with a key signature of one sharp (F#) and a bass clef. The word "grauschend" is written above the staff. The word "Pedal" is written below the bass staff. The word "din" is written above the staff. The word "Pedal aus" is written below the staff. Measure 30 is circled.

Handwritten musical score for measure 31. The notation includes a treble clef with a key signature of one sharp (F#) and a bass clef. The word "Pedal" is written below the bass staff. The word "p" is written below the staff. The word "2te gest" is written below the staff. Measure 31 is circled.

(34)

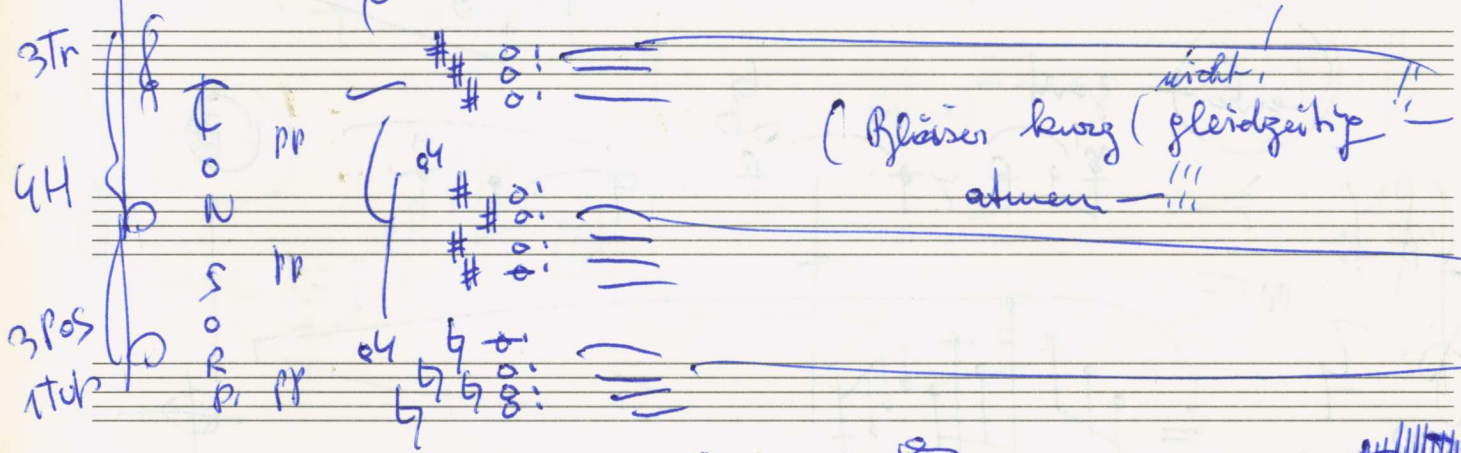
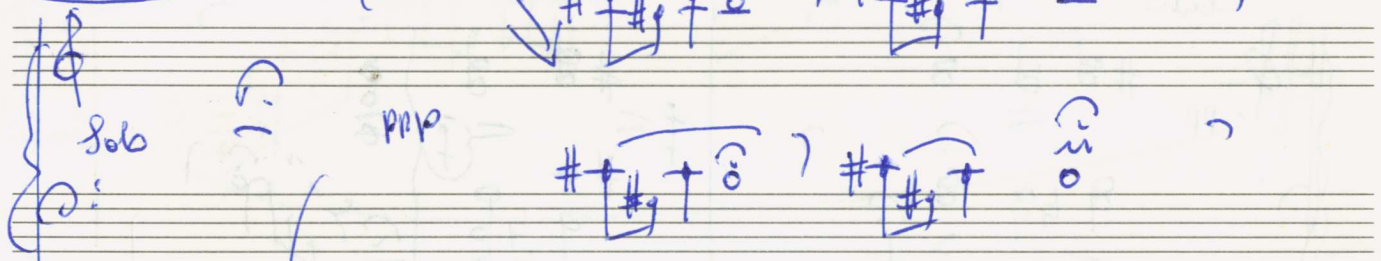
(F.C.) Satz 1)



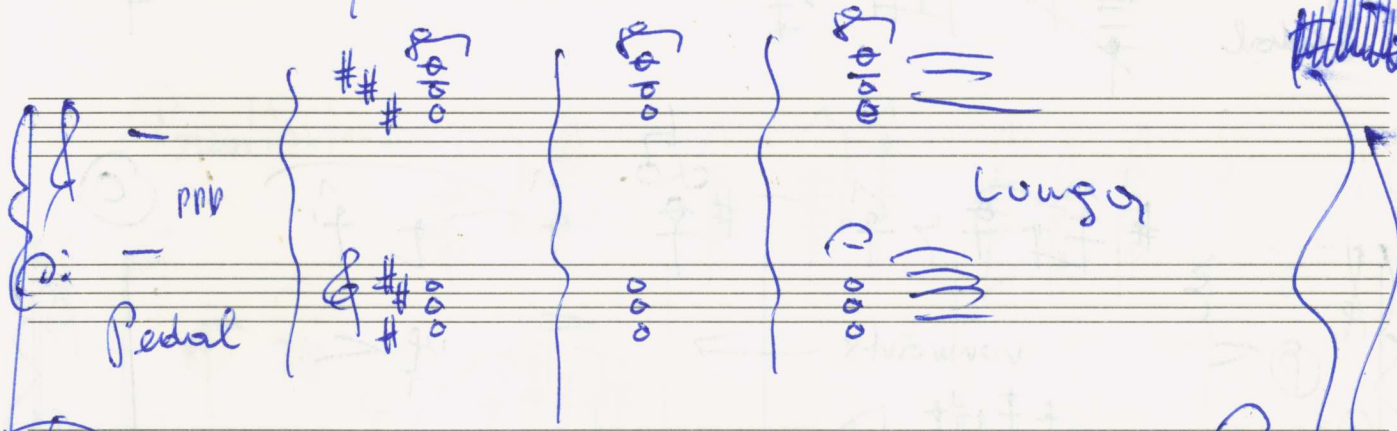
Leute (CODA)

Satz 1. Schluß des Konzertes!!!

(ganz frei)



(Bläser kurz gleichzeitig nicht atmen!!!)



lunga



FINE

Kadenzen !!

(ganz frei gestalten

Lento religioso

Handwritten musical notation for the first system of a cadenza. It features a treble and bass clef staff with notes, rests, and dynamic markings like 'pp' and 'f'. There are also some handwritten annotations and a circled 'F' at the end of the system.

Lento

zart-

Handwritten musical notation for the second system of a cadenza. It includes a treble and bass clef staff with notes, rests, and dynamic markings like 'pp'. A large blue slur covers the bass line. The word 'Pedal' is written below the bass staff. A circled 'B' is at the end of the system.

vorwärts →

Handwritten musical notation for the third system of a cadenza. It includes a treble and bass clef staff with notes, rests, and dynamic markings like 'p'. The word 'Pedal' is written below the bass staff. A circled 'C' is at the end of the system.

ruhig beginnen →

Tempo steigern (bei Prestissimo) - 7H

hektisch - bewegt -

Handwritten musical score for system 3. It features a grand staff with treble and bass clefs. The bass clef part is labeled "Pedal" and contains a series of chords with flats. The treble clef part has a melodic line with slurs and a final measure with a circled "3".

Handwritten musical score for system 4. It features a grand staff with treble and bass clefs. The bass clef part has a melodic line with slurs and a final measure with a circled "4". The treble clef part has a melodic line with slurs and a final measure with a circled "4".

Handwritten musical score for system 5. It features a grand staff with treble and bass clefs. The bass clef part has a melodic line with slurs and a final measure with a circled "5". The treble clef part has a melodic line with slurs and a final measure with a circled "5".

Handwritten musical score for system 6. It features a grand staff with treble and bass clefs. The bass clef part has a melodic line with slurs and a final measure with a circled "6". The treble clef part has a melodic line with slurs and a final measure with a circled "6".

8/

Pedal

L

letzten 4 Takte modials

M

letzten 4 Takte modials

N

folgt nach G.P. Anfang bei 5. große

Pedal

1 2 3 4 5

G.P.

O

~~OP. 104~~ (oder Konzert)

Leitend sehr langsam frei

Beginn und als Coda gedoubt!!!

Beginn des Konzertes

frei (leichte, frei gestochen) (über Hall, Flöte) - Solo wichtig vorwärts

STR
4H
3Pos
1Tub

Fine des Konzertes!!!!