

IMPROVISATIONEN

ÜBER EINEN CHORAL

(FÜR ORGEL)

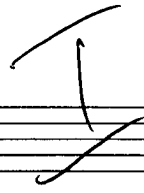
1972

Adolf Scherbaum

(WIE EHREN DICH)

Teil 1

*lento*



Handwritten musical score for the first system, consisting of four staves. The staves are labeled 1, 2, 3, and CFB. The notation includes various notes, rests, and accidentals (sharps and flats). There are several slurs and accents (^) throughout the piece. A circled number '2' is written in the CFB staff.

Handwritten musical score for the second system, consisting of four staves. The notation continues with various notes, rests, and accidentals. There are several slurs and accents (^) throughout the piece.

Handwritten musical score for the first system. The top staff is in treble clef and contains a melodic line with a slur over the first two measures and a fermata over the last two. The bottom three staves are in bass clef and provide accompaniment with various notes and rests. There are several accidentals (sharps and flats) and dynamic markings (accents) throughout the system.

din

Handwritten musical score for the second system. The word "din" is written above the first staff. The top staff is in treble clef and contains a melodic line with a slur over the first two measures and a fermata over the last two. The bottom three staves are in bass clef and provide accompaniment with various notes and rests. There are several accidentals (sharps and flats) and dynamic markings (accents) throughout the system.

Handwritten musical notation for the first system. It consists of a treble clef on the top staff and a grand staff (treble and bass clefs) below. The treble staff contains a melodic line with notes and rests, some connected by a slur. The grand staff contains chordal accompaniment with notes and rests.

Handwritten musical notation for the second system. It features a treble clef and a grand staff. A circled 'p' (piano) dynamic marking is present in the first measure of the treble staff. The notation includes various notes, rests, and slurs across both staves.

Handwritten musical notation for the third system. It features a treble clef and a grand staff. A long slur spans across the top staff, covering the first two measures. The notation includes various notes and rests in both staves.

Two empty musical staves at the bottom of the page, consisting of five lines each.

The image shows five systems of handwritten musical notation for organ improvisation. Each system consists of two staves. The notation is in a single system with a treble clef on the upper staff and a bass clef on the lower staff. The music features various note values, including quarter notes, eighth notes, and rests, along with accidentals such as sharps and naturals. Large, sweeping curved lines are drawn across the staves, indicating phrasing or breath marks. The systems are arranged vertically, with some systems having blank staves above them.

Handwritten musical notation for the first system. It consists of two staves. The upper staff is in treble clef and contains a long melodic line with a slur over it, starting with a G4 and moving through A4, B4, C5, and D5. The lower staff is in bass clef and contains a bass line with notes G2, A2, B2, and C3, also with a slur.

Handwritten musical notation for the second system. The upper staff in treble clef features a series of eighth notes with slurs and accents, including sharps on F and C. The lower staff in bass clef has a bass line with slurs and accents, including a double sharp on F.

Handwritten musical notation for the third system. The upper staff in treble clef continues with eighth notes and slurs, featuring sharps on F and C. The lower staff in bass clef has a bass line with slurs and accents, including a double sharp on F.

Handwritten musical notation for the fourth system. The upper staff in treble clef concludes with eighth notes and slurs. The lower staff in bass clef has a bass line with slurs and accents, including a double sharp on F.

Handwritten musical notation for the first system. The treble staff contains a melodic line with notes G4, A4, B4, C5, and D5, with a sharp sign above the first G. The bass staff contains a bass line with notes G2, F2, E2, and D2. Chords are indicated by numbers 9 and #9. The system concludes with a double bar line and repeat signs.

Handwritten musical notation for the second system. The treble staff contains a melodic line with notes D5, C5, B4, A4, G4, and F4. The bass staff contains a bass line with notes G2, F2, E2, and D2. Chords are indicated by numbers 9, #9, 7, and 7. The system concludes with a double bar line and repeat signs.

Handwritten musical notation for the third system. The treble staff contains a melodic line with notes G4, F4, E4, and D4. The bass staff contains a bass line with notes G2, F2, E2, and D2. Chords are indicated by numbers 9, #9, 7, and 7. The system concludes with a double bar line and repeat signs.

Handwritten musical notation for the fourth system. The treble staff contains a melodic line with notes G4, F4, E4, and D4. The bass staff contains a bass line with notes G2, F2, E2, and D2. Chords are indicated by numbers 9, #9, 7, and 7. The system concludes with a double bar line and repeat signs.

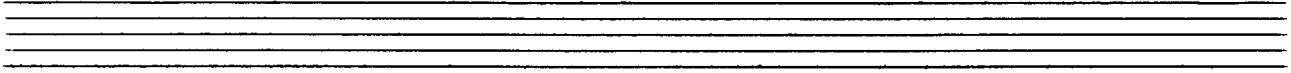
Handwritten musical notation for the first system. The top staff is a treble clef with a melodic line consisting of quarter notes, followed by a long slur over the next three measures. The bottom staff is a bass clef with chords and a whole note. The chords are:  $G^b F^b G$ ,  $F G$ ,  $G^b F^b G$ .

Handwritten musical notation for the second system. The top staff is a treble clef with a melodic line, including a double bar line. The bottom staff is a bass clef with chords and a whole note. The chords are:  $F G$ ,  $F G$ ,  $F G$ .

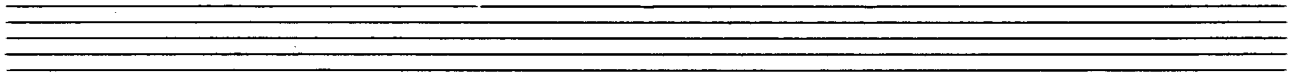
Handwritten musical notation for the third system. The top staff is a treble clef with a melodic line, including a long slur. The bottom staff is a bass clef with chords and a whole note. The chords are:  $F G$ ,  $F G$ ,  $F G$ .

Four empty musical staves for further notation.

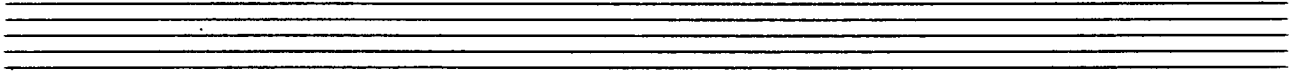




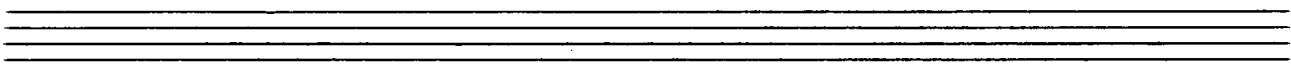
Handwritten musical notation for the first system, featuring a treble clef, a key signature of one flat, and a melodic line with a slur over four measures. The bass line contains rhythmic accompaniment with eighth notes and rests.



Handwritten musical notation for the second system, continuing the melodic and rhythmic patterns from the first system.



Handwritten musical notation for the third system, showing a change in the bass line with chords and a continuation of the melodic line.



Handwritten musical notation for the fourth system, concluding the piece with a final melodic phrase and a double bar line.

Handwritten musical score for the first system. The top staff is in treble clef with a melodic line. The bottom two staves are in grand staff. The key signature is one sharp (F#) and the time signature is 8/8. The first measure contains a melodic phrase starting on G4, moving up to D5. The second measure continues the phrase. Chords in the grand staff are marked with #4 and 8 in the first measure, and 4 and 8 in the second measure.

Handwritten musical score for the second system. The top staff is in treble clef with a melodic line. The bottom two staves are in grand staff. The key signature is one sharp (F#) and the time signature is 8/8. The first measure contains a melodic phrase starting on G4, moving up to D5. The second measure continues the phrase. Chords in the grand staff are marked with #4 and 8 in the first measure, and #4 and 8 in the second measure.

Handwritten musical score for the third system. The top staff is in treble clef with a melodic line. The bottom two staves are in grand staff. The key signature is one sharp (F#) and the time signature is 8/8. The first measure contains a melodic phrase starting on G4, moving up to D5. The second measure continues the phrase. Chords in the grand staff are marked with #4 and 8 in the first measure, and 4 and 8 in the second measure.

Handwritten musical score for the first system, featuring a treble clef, a key signature of one sharp (F#), and a 3/4 time signature. The music is written on a grand staff with three systems of staves. The first system shows a melodic line in the treble clef and accompaniment in the bass clef. A sharp sign is visible above the first measure of the bass line.

Handwritten musical score for the second system, continuing the piece with similar notation and structure to the first system.

Handwritten musical score for the third system, concluding the piece with similar notation and structure to the previous systems.

Handwritten musical score for the first system. The system consists of three staves. The top staff is a treble clef with a melodic line. The middle staff is a bass clef with a piano accompaniment. The bottom staff is a grand staff with a bass clef. The key signature has one sharp (F#) and the time signature is 9/8. The first measure contains a melodic phrase with a slur and a fermata. The second measure contains a similar phrase. The piano part has chords with a fermata in the first measure and a chord with a fermata in the second measure.

Handwritten musical score for the second system. The system consists of three staves. The top staff is a treble clef with a melodic line. The middle staff is a bass clef with a piano accompaniment. The bottom staff is a grand staff with a bass clef. The key signature has one sharp (F#) and the time signature is 9/8. The first measure contains a melodic phrase with a slur and a fermata. The second measure contains a similar phrase. The piano part has chords with a fermata in the first measure and a chord with a fermata in the second measure.

Handwritten musical score for the third system. The system consists of three staves. The top staff is a treble clef with a melodic line. The middle staff is a bass clef with a piano accompaniment. The bottom staff is a grand staff with a bass clef. The key signature has one sharp (F#) and the time signature is 9/8. The first measure contains a melodic phrase with a slur and a fermata. The second measure contains a similar phrase. The piano part has chords with a fermata in the first measure and a chord with a fermata in the second measure.

Handwritten musical score for the first system. It consists of three staves. The top staff has a treble clef and contains a melodic line with a large slur over it, including several sixteenth-note passages. The middle staff has a bass clef and contains a lower melodic line with a slur. The bottom staff has a bass clef and contains a simple bass line with a few notes. There are vertical bar lines and a large horizontal brace under the bottom staff.

Handwritten musical score for the second system. It consists of three staves. The top staff has a treble clef and contains a melodic line with a large slur over it, including several sixteenth-note passages. The middle staff has a bass clef and contains a lower melodic line with a slur. The bottom staff has a bass clef and contains a simple bass line with a few notes. The word "rit" is written in the middle of the system with a dashed line following it. There are vertical bar lines and a large horizontal brace under the bottom staff.

Handwritten musical score for the third system. It consists of three staves. The top staff has a treble clef and contains a melodic line with a large slur over it, including several sixteenth-note passages. The middle staff has a bass clef and contains a lower melodic line with a slur. The bottom staff has a bass clef and contains a simple bass line with a few notes. The key signature changes from one sharp to one flat, indicated by a sharp sign followed by a flat sign. There are vertical bar lines and a large horizontal brace under the bottom staff.

Adagio brevit (passionata)

Handwritten musical score for the first system. It consists of a treble clef staff and a bass clef staff. The treble staff contains several measures of music with notes and accidentals (flats and sharps). The bass staff contains a long, sweeping line. Above the treble staff, there are handwritten notes: 'b', 'b', and 'b' above the first three measures, and 'C' above the fourth measure. There are also some handwritten notes like '4' and '4' in the treble staff.

Handwritten musical score for the second system. It consists of a treble clef staff and a bass clef staff. The treble staff contains several measures of music with notes and accidentals. The bass staff contains a long, sweeping line. Above the treble staff, there are handwritten notes: 'b', 'b', 'b', and 'b' above the first four measures, and 'b' and 'b' above the fifth and sixth measures. There are also some handwritten notes like '4' and '4' in the treble staff.

Handwritten musical score for the third system. It consists of a treble clef staff and a bass clef staff. The treble staff contains several measures of music with notes and accidentals. The bass staff contains a long, sweeping line. Above the treble staff, there are handwritten notes: 'C' above the first measure, 'C' above the second measure, and 'C' above the third measure. There are also some handwritten notes like '4' and '4' in the treble staff.

(momento)

Handwritten musical score for the first system. It consists of two staves: a treble clef staff on top and a bass clef staff on the bottom. The treble staff contains three measures of music, each starting with a 7/8 time signature. The notes are mostly eighth and quarter notes, with some accidentals (flats and naturals). The bass staff contains three measures of music, each starting with a 7/8 time signature, featuring mostly quarter and eighth notes. The system is enclosed in a large bracket on the right side.

Handwritten musical score for the second system. It consists of two staves: a treble clef staff on top and a bass clef staff on the bottom. The treble staff contains two measures of music, each starting with a 7/8 time signature. The notes are mostly eighth and quarter notes, with some accidentals. The bass staff contains two measures of music, each starting with a 7/8 time signature, featuring mostly quarter and eighth notes. The second measure of the bass staff has the handwritten annotation "Zurück" written below it. The system is enclosed in a large bracket on the right side.

Handwritten musical score for the third system. It consists of two staves: a treble clef staff on top and a bass clef staff on the bottom. The treble staff contains three measures of music, each starting with a 7/8 time signature. The notes are mostly quarter and eighth notes, with some accidentals. The bass staff contains three measures of music, each starting with a 7/8 time signature, featuring mostly quarter and eighth notes. The first measure of the treble staff has the handwritten annotation "rit." written above it. The system is enclosed in a large bracket on the right side.

sehr  
breite 4/4 (frei)

Handwritten musical notation for the first system. It features a treble clef, a key signature of one flat (B-flat), and a 4/4 time signature. The notation includes a series of chords and melodic lines with slurs and accents.

Empty musical staves.

Handwritten musical notation for the second system. It features a treble clef, a key signature of one flat (B-flat), and a 4/4 time signature. The notation includes a series of chords and melodic lines with slurs and accents.

Empty musical staves.

Handwritten musical notation for the third system. It features a treble clef, a key signature of one flat (B-flat), and a 4/4 time signature. The notation includes a series of chords and melodic lines with slurs and accents.

Empty musical staves.

Handwritten musical notation for the fourth system. It features a treble clef, a key signature of one flat (B-flat), and a 4/4 time signature. The notation includes a series of chords and melodic lines with slurs and accents.



Handwritten musical notation for the first system. The right hand part begins with a flat key signature and a fermata. The left hand part consists of a rhythmic accompaniment of eighth notes. A large slur covers both staves.

Handwritten musical notation for the second system. Similar to the first, it shows a grand staff with a melodic line in the right hand and a rhythmic accompaniment in the left hand, all under a large slur.

Handwritten musical notation for the third system. The right hand part has a melodic line with a fermata, and the left hand has a rhythmic accompaniment. A large slur covers both staves.





(frei)

pp

# #

# #

# #

Handwritten musical notation for the first system. The treble clef staff contains a sharp sign (#) and a circle with a cross (⊗). The bass clef staff contains a flat sign (b) and a circle with a cross (⊗). The notation includes a series of notes with accidentals and slurs.

Handwritten musical notation for the second system. The treble clef staff contains a sharp sign (#) and a circle with a cross (⊗). The bass clef staff contains a flat sign (b) and a circle with a cross (⊗). The notation includes a series of notes with accidentals and slurs.

Handwritten musical notation for the third system. The treble clef staff contains a sharp sign (#) and a circle with a cross (⊗). The bass clef staff contains a flat sign (b) and a circle with a cross (⊗). The notation includes a series of notes with accidentals and slurs.

Handwritten musical notation for the fourth system. The treble clef staff contains a sharp sign (#) and a circle with a cross (⊗). The bass clef staff contains a flat sign (b) and a circle with a cross (⊗). The notation includes a series of notes with accidentals and slurs.

Handwritten musical notation for the first system. The treble staff contains notes with accidentals (flats) and dynamic markings such as *ff*. The bass staff shows a simple accompaniment with notes and rests.

Handwritten musical notation for the second system. The treble staff continues with melodic lines and dynamic markings. The bass staff provides harmonic support with notes and rests.

Handwritten musical notation for the third system. The treble staff features more complex rhythmic patterns and dynamic markings. The bass staff continues with accompaniment.

Handwritten musical notation for the fourth system, concluding the piece. The treble staff ends with a final cadence, and the bass staff has a simple accompaniment.

#DAGLO (mysterioso) (Sempre crescendo)

Handwritten musical notation for the first system. It features a treble clef and a circled 'ppp' dynamic marking. The time signature is '4'. The notation includes notes with accidentals (sharps and flats) and slurs. There are also some scribbled-out notes and a '4' written below the staff.

Handwritten musical notation for the second system. It features a treble clef and a circled 'pp' dynamic marking. The notation includes notes with accidentals and slurs.

Handwritten musical notation for the third system. It features a treble clef and various notes with accidentals and slurs.

Handwritten musical score for the first system. The top staff (treble clef) contains a melodic line of half notes with slurs. The middle staff (bass clef) contains a bass line with quarter notes and eighth-note triplets. The bottom staff (bass clef) contains a simple bass line with quarter notes. A circled 'p' is written in the middle staff.

Handwritten musical score for the second system. The top staff (treble clef) contains a melodic line of half notes with slurs. The middle staff (bass clef) contains a bass line with quarter notes and eighth-note triplets. The bottom staff (bass clef) contains a simple bass line with quarter notes. Circled 'mf' and 'f' are written in the middle staff.

Handwritten musical score for the third system. The top staff (treble clef) contains a melodic line of half notes with slurs. The middle staff (bass clef) contains a bass line with quarter notes and eighth-note triplets. The bottom staff (bass clef) contains a simple bass line with quarter notes. Circled 'ff' and '###' are written in the middle staff. A box with the letter 'C' is at the end of the system.



(Presto (auf 3) ~~esragh!~~)



Handwritten musical notation for the first system. The top staff (treble clef) contains notes with accidentals (flats and naturals) and a fermata. The middle and bottom staves (grand staff) feature complex chordal textures with many notes, some marked with accents (>).

Handwritten musical notation for the second system. The top staff continues the melodic line with various rhythmic values and accidentals. The middle and bottom staves show complex chordal textures with many notes and accents.

Handwritten musical notation for the third system. The top staff concludes the melodic line with a fermata. The middle and bottom staves show complex chordal textures with many notes and accents, ending with a final cadence.

Handwritten musical score for the first system. It consists of a treble clef staff and a bass clef staff. The treble staff contains a melodic line with several notes, including a sharp sign (#) and a double sharp sign (##). The bass staff contains a bass line with notes and rests. A large brace spans across both staves, and there are two fermatas marked with a '0' and a prime symbol (0') below the bass staff.

Handwritten musical score for the second system. It continues the melodic and bass lines from the first system. The treble staff shows a continuation of the melodic phrase with various intervals and accidentals. The bass staff continues with a similar rhythmic and melodic pattern. A large brace spans across both staves, and there are two fermatas marked with a '0' and a prime symbol (0') below the bass staff.

Handwritten musical score for the third system. It features a treble clef staff and a bass clef staff. The treble staff contains a melodic line with several notes, including a sharp sign (#) and a double sharp sign (##). The bass staff contains a bass line with notes and rests. A large brace spans across both staves, and there are two fermatas marked with a '0' and a prime symbol (0') below the bass staff.

Handwritten musical score for the first system. It consists of three staves. The top staff is in treble clef with a key signature of one sharp (F#). The middle staff is in treble clef. The bottom staff is in bass clef. The music includes various note values, slurs, and rests.

(26x) vid.

Handwritten musical score for the second system. It consists of three staves. The top staff is in treble clef with a key signature of one flat (Bb). The middle staff is in treble clef. The bottom staff is in bass clef. The music includes various note values, slurs, and rests.

Handwritten musical score for the third system. It consists of three staves. The top staff is in treble clef with a key signature of one flat (Bb). The middle staff is in treble clef. The bottom staff is in bass clef. The music includes various note values, slurs, and rests.

sehr breit ausladend

voll Werk

The image shows three systems of handwritten musical notation for organ improvisation. Each system consists of three staves: a treble clef staff at the top, a middle staff, and a bass clef staff at the bottom. The notation is sketchy and includes various notes, rests, and accidentals (sharps, flats, naturals). The first system is labeled 'voll Werk' and 'sehr breit ausladend'. The second system has some notes with stems pointing downwards. The third system continues the improvisation with similar notation.

Handwritten musical notation for the first system, featuring a grand staff with treble and bass clefs. The music consists of several measures with notes and accidentals (flats and naturals) written above the staves. A large slur covers the entire system.

Handwritten musical notation for the second system, continuing the piece. It includes a grand staff with treble and bass clefs, similar to the first system, with notes and accidentals. A large slur is present.

Handwritten musical notation for the third system, continuing the piece. It includes a grand staff with treble and bass clefs, with notes and accidentals. A large slur is present.

Handwritten musical notation for the first system. The treble clef staff contains a melody with notes and accidentals (flats) such as  $b^b$ ,  $a$ ,  $g$ ,  $b$ ,  $a$ ,  $g$ . The bass clef staff shows a simple accompaniment pattern with notes  $a$ ,  $g$ ,  $f$ ,  $e$ .

Handwritten musical notation for the second system. The treble clef staff continues the melody with notes and accidentals like  $d$ ,  $c$ ,  $b$ ,  $a$ ,  $g$ . The bass clef staff has a more active accompaniment with notes  $d$ ,  $c$ ,  $b$ ,  $a$ ,  $g$ .

*Finis.*

Handwritten musical notation for the third system, concluding with a double bar line and a final flourish. The treble clef staff has notes  $b$ ,  $a$ ,  $g$ ,  $f$ ,  $e$ . The bass clef staff has notes  $b$ ,  $a$ ,  $g$ ,  $f$ ,  $e$ .



IMPROVISATIONEN

ÜBER EINEN CHORAL

(FÜR ORGEL)

1972

Adolf Scherbaum

Teil 2

Allegro

Handwritten musical notation for the first system. The treble staff contains a melodic line with a slur over the first two measures. The bass staff provides accompaniment, starting with a bass clef and a flat sign (b). The notation includes various note values and rests.

Handwritten musical notation for the second system. The treble staff continues the melodic line with slurs. The bass staff features more complex rhythmic patterns, including triplets and sixteenth notes, with a sharp sign (#) appearing in the second measure.

Handwritten musical notation for the third system. The treble staff shows a series of chords and intervals, with a sharp sign (#) in the first measure. The bass staff continues with rhythmic accompaniment, including slurs and note groups.

Handwritten musical notation for the fourth system. The treble staff features sustained chords and intervals, with a flat sign (b) in the first measure. The bass staff concludes with rhythmic accompaniment, including slurs and note groups.



Handwritten musical notation for the first system. The treble clef staff contains a melodic line with a flat key signature and a common time signature. The bass clef staff contains a rhythmic accompaniment with eighth and sixteenth notes. A large slur covers the first two measures of both staves.

Handwritten musical notation for the second system. The treble clef staff continues the melodic line. The bass clef staff features a more active accompaniment with eighth notes and some beamed sixteenth notes. A large slur covers the first two measures.

Handwritten musical notation for the third system. The treble clef staff has a melodic line with some chromaticism. The bass clef staff has a rhythmic accompaniment with eighth notes and some beamed sixteenth notes. A large slur covers the first two measures.

Handwritten musical notation for the fourth system. The treble clef staff has a melodic line. The bass clef staff has a rhythmic accompaniment. A large slur covers the first two measures.

Handwritten musical notation for the first system. The treble staff contains a melodic line with a long slur over the first two measures. The bass staff provides accompaniment with rhythmic patterns and chords. The key signature has one sharp (F#).

Handwritten musical notation for the second system. The treble staff continues the melodic line with a slur. The bass staff continues the accompaniment with rhythmic patterns and chords. The key signature has one sharp (F#).

Handwritten musical notation for the third system. The treble staff continues the melodic line with a slur. The bass staff continues the accompaniment with rhythmic patterns and chords. The key signature has one sharp (F#).

Handwritten musical notation for the fourth system. The treble staff concludes the melodic line with a slur. The bass staff concludes the accompaniment with rhythmic patterns and chords. The key signature has one sharp (F#).

Handwritten musical notation for the first system, featuring a treble and bass staff with various notes and rests.

Handwritten musical notation for the second system, including a treble staff with a melodic line and a bass staff with a bass line.

Handwritten musical notation for the third system, with a treble staff and a bass staff. A handwritten note "letzte + ev. rit-----" is present.

Handwritten musical notation for the fourth system, ending with a "FINE" stamp.

*fudante (sehr ruhig)*



Handwritten musical notation for the first system. The treble staff contains notes with accidentals (sharps and naturals) and slurs. The bass staff contains notes with accidentals (sharps and naturals) and slurs. The system is enclosed in a large bracket on the left.

Handwritten musical notation for the second system. The treble staff contains notes with accidentals (sharps and naturals) and slurs. The bass staff contains notes with accidentals (sharps and naturals) and slurs. The system is enclosed in a large bracket on the left.

Handwritten musical notation for the third system. The treble staff contains notes with accidentals (sharps and naturals) and slurs. The bass staff contains notes with accidentals (sharps and naturals) and slurs. The system is enclosed in a large bracket on the left.

rit ~ ~ ~ ~ ~

D.c.  
Allegro  $\frac{12}{8}$   
al  
Fine

sehr langsam (ruhig)

Handwritten musical notation for the first system. The treble clef staff contains a melodic line with notes and accidentals (flats) across two measures. The bass clef staff contains a bass line with notes and accidentals. A circled 'pp' dynamic marking is present in the first measure of the treble staff. A long slur covers the entire system.

Handwritten musical notation for the second system. The treble clef staff continues the melodic line with notes and accidentals. The bass clef staff continues the bass line with notes and accidentals. A long slur covers the entire system.

Handwritten musical notation for the third system. The treble clef staff features more complex melodic lines with notes, accidentals, and some beamed notes. The bass clef staff continues the bass line with notes and accidentals. A long slur covers the entire system.

Handwritten musical notation for the first system. The treble staff contains a melodic line with notes and accidentals (flats and sharps) under a slur. The bass staff contains a bass line with notes and accidentals, also under a slur. The system is divided into three measures by vertical bar lines.

Handwritten musical notation for the second system. The treble staff continues the melodic line with notes and accidentals. The bass staff continues the bass line with notes and accidentals. The system is divided into three measures by vertical bar lines.

Handwritten musical notation for the third system. The treble staff continues the melodic line with notes and accidentals. The bass staff continues the bass line with notes and accidentals. The system is divided into three measures by vertical bar lines.

Four sets of empty musical staves, each consisting of a treble and bass staff, located at the bottom of the page.

Handwritten musical notation for the first system. The system consists of two staves. The upper staff is in treble clef and contains a melodic line with a slur over the first two measures and a fermata over the second measure. The lower staff is in bass clef and contains chordal accompaniment with a slur over the first two measures and a fermata over the second measure. The notes in the first measure are G4, A4, B4, and C5. The notes in the second measure are B4, A4, G4, and F4. The bass clef accompaniment consists of a single note G3 in both measures.

Handwritten musical notation for the second system. The system consists of two staves. The upper staff is in treble clef and contains a melodic line with a slur over the first two measures and a fermata over the second measure. The lower staff is in bass clef and contains chordal accompaniment with a slur over the first two measures and a fermata over the second measure. The notes in the first measure are G4, A4, B4, and C5. The notes in the second measure are B4, A4, G4, and F4. The bass clef accompaniment consists of a single note G3 in both measures.

Handwritten musical notation for the third system. The system consists of two staves. The upper staff is in treble clef and contains a melodic line with a slur over the first two measures and a fermata over the second measure. The lower staff is in bass clef and contains chordal accompaniment with a slur over the first two measures and a fermata over the second measure. The notes in the first measure are G4, A4, B4, and C5. The notes in the second measure are B4, A4, G4, and F4. The bass clef accompaniment consists of a single note G3 in both measures.

Handwritten musical notation for the first system. It consists of two staves: a treble staff and a bass staff. The treble staff contains a melodic line with a long slur over two measures. The bass staff contains a rhythmic accompaniment. The notation is handwritten and includes various note values and rests.

Handwritten musical notation for the second system. It consists of two staves: a treble staff and a bass staff. The treble staff contains a melodic line with a long slur over two measures. The bass staff contains a rhythmic accompaniment that includes a triplet of notes in the first measure of each measure. The notation is handwritten and includes various note values and rests.

Handwritten musical notation for the third system. It consists of two staves: a treble staff and a bass staff. The treble staff contains a melodic line with a long slur over two measures. The bass staff contains a rhythmic accompaniment. The notation is handwritten and includes various note values and rests.

Four empty musical staves, each consisting of five lines, arranged vertically. They are intended for additional musical notation.

Handwritten musical notation for the first system. It consists of two staves: a treble clef staff and a bass clef staff. The treble staff contains a melodic line with a long slur over two measures. The bass staff contains a simple accompaniment with a few notes and rests.

Handwritten musical notation for the second system. It consists of two staves: a treble clef staff and a bass clef staff. The treble staff contains a melodic line with a long slur over two measures. The bass staff contains a simple accompaniment with a few notes and rests.

Handwritten musical notation for the third system. It consists of two staves: a treble clef staff and a bass clef staff. The treble staff contains a melodic line with a long slur over two measures. The bass staff contains a simple accompaniment with a few notes and rests.

Handwritten musical notation for the first system. The top staff is in treble clef and contains a melodic line with a slur over five measures. The word "rit..." is written above the slur. The bottom staff is in bass clef and contains a whole rest.

Handwritten musical notation for the second system. The top staff is in treble clef and contains a melodic line with slurs and accidentals. The bottom staff is in bass clef and contains chords with a "pp" dynamic marking.

Handwritten musical notation for the third system. The top staff is in treble clef and contains a melodic line with slurs and accidentals. The bottom staff is in bass clef and contains chords.



gr. rit....

sehr breit ausladend

vollwerk

frei

subito

vorwärts

Handwritten musical score for the first system. It consists of three staves. The top staff is in treble clef with a key signature of one sharp (F#). The middle staff is in bass clef. The bottom staff is in bass clef. The music includes notes, rests, and slurs. There are some handwritten annotations above the first staff, including a sharp sign and a circled symbol.

*And.*

Handwritten musical score for the second system. It consists of three staves. The top staff is in treble clef with a key signature of one sharp (F#). The middle staff is in bass clef. The bottom staff is in bass clef. The music includes notes, rests, and slurs. There are handwritten annotations including a sharp sign and the word "collo" written twice.

Handwritten musical score for the third system. It consists of three staves. The top staff is in treble clef with a key signature of one sharp (F#). The middle staff is in bass clef. The bottom staff is in bass clef. The music includes notes, rests, and slurs. There are handwritten annotations including a sharp sign and the word "collo" written twice. The word "Vorwärts" is written in the middle of the bottom staff.

Handwritten musical score for the first system. It consists of three staves: a treble clef staff at the top, an alto clef staff in the middle, and a bass clef staff at the bottom. The treble staff contains a melodic line with eighth and sixteenth notes, some beamed together. The alto and bass staves contain chordal accompaniment with notes and rests. There are some handwritten annotations, including a sharp sign and a clef change in the alto staff.

Handwritten musical score for the second system. It features three staves: treble, alto, and bass clefs. The treble staff has a melodic line with a sharp sign and a clef change. The alto staff contains chordal accompaniment. The bass staff has a rhythmic pattern of eighth notes with stems pointing down. A handwritten marking "G(ccl)" is present in the middle of the system.

Handwritten musical score for the third system. It features three staves: treble, alto, and bass clefs. The treble staff has a melodic line with a sharp sign and a clef change. The alto staff contains chordal accompaniment. The bass staff has a rhythmic pattern of eighth notes with stems pointing down. A handwritten marking "52" is present at the beginning of the system.

Handwritten musical score for the first system. It consists of three staves. The top staff is in treble clef, the middle in bass clef, and the bottom in bass clef. The key signature is one sharp (F#) and the time signature is 7/8. The notation includes chords, melodic lines with slurs, and a bass line with rhythmic markings.

Handwritten musical score for the second system, identical in notation to the first system. It consists of three staves with treble and bass clefs, a key signature of one sharp, and a 7/8 time signature.

*wieder breiter werden*

Handwritten musical score for the third system. It consists of three staves. The top staff is in treble clef, the middle in bass clef, and the bottom in bass clef. The key signature is one sharp (F#) and the time signature is 7/8. The notation includes chords, melodic lines with slurs, and a bass line with rhythmic markings.

so rasch als möglich

Handwritten musical score for the first system, featuring a grand staff with treble and bass clefs. The right hand has a complex, rapid sixteenth-note passage, while the left hand has a simpler bass line. Handwritten annotations include "7H" and "7L" above the staves, and a key signature change to B-flat major (two flats) and a 3/4 time signature. A bar line is present in the middle of the system.

Handwritten musical score for the second system, continuing the piece. It features similar complex sixteenth-note passages in the right hand and a bass line in the left hand. Handwritten annotations include a key signature change to D minor (one flat) and a 3/4 time signature. A bar line is present in the middle of the system.

Handwritten musical score for the third system, concluding the piece. It features complex sixteenth-note passages in the right hand and a bass line in the left hand. Handwritten annotations include a key signature change to D minor (one flat) and a 3/4 time signature. A bar line is present in the middle of the system.

Handwritten musical notation for the first system. It features a treble clef, a key signature of three flats (B-flat, E-flat, A-flat), and a common time signature. The right hand plays a complex chordal texture with many notes, while the left hand plays a simple bass line with three notes.

Handwritten musical notation for the second system. It features a treble clef, a key signature of one flat (B-flat), and a common time signature. The right hand plays a complex chordal texture with many notes, while the left hand plays a simple bass line with two notes.

Handwritten musical notation for the third system. It features a treble clef, a key signature of one flat (B-flat), and a common time signature. The right hand plays a complex chordal texture with many notes, while the left hand plays a simple bass line with two notes.

Handwritten musical score for the first system, consisting of three staves. The top staff contains two whole notes with stems pointing up, each with a circled 'o' above it. The middle staff features a melodic line with eighth notes and a slur. The bottom staff has two whole notes with stems pointing down.

Handwritten musical score for the second system, consisting of three staves. The top staff has eighth notes with a circled '9' and various accidentals. The middle staff has a complex rhythmic pattern with eighth notes and a slur. The bottom staff has two whole notes with stems pointing down and a triangle symbol above each.

Handwritten musical score for the third system, consisting of three staves. The top staff has eighth notes with a circled '9' and various accidentals. The middle staff has a complex rhythmic pattern with eighth notes and a slur. The bottom staff has two whole notes with stems pointing down.



Handwritten musical score for the first system. It consists of three staves: a treble clef staff at the top, a grand staff (piano) in the middle, and a bass clef staff at the bottom. The treble staff contains two measures of music with notes and chords. The piano staff contains two measures of dense chordal textures, each with a slur underneath. The bass staff contains two measures with single notes and rests.

Handwritten musical score for the second system. It consists of three staves: a treble clef staff at the top, a grand staff (piano) in the middle, and a bass clef staff at the bottom. The treble staff contains two measures of music with notes and chords. The piano staff contains two measures of dense chordal textures, each with a slur underneath. The bass staff contains two measures with single notes and rests.

Handwritten musical score for the third system. It consists of three staves: a treble clef staff at the top, a grand staff (piano) in the middle, and a bass clef staff at the bottom. The treble staff contains two measures of music with notes and chords. The piano staff contains two measures of dense chordal textures, each with a slur underneath. The bass staff contains two measures with single notes and rests.

Handwritten musical score for the first system. It consists of three staves. The top staff is in treble clef with a 7/4 time signature. The middle and bottom staves are part of a grand staff with piano accompaniment. The music is divided into two measures by a vertical bar line. The first measure contains several chords and a melodic line in the piano part. The second measure continues the composition with similar harmonic and melodic elements.

Handwritten musical score for the second system. It consists of three staves. The top staff is in treble clef with a 7/4 time signature. The middle and bottom staves are part of a grand staff with piano accompaniment. The music is divided into two measures by a vertical bar line. The first measure contains several chords and a melodic line in the piano part. The second measure continues the composition with similar harmonic and melodic elements.

Handwritten musical score for the third system. It consists of three staves. The top staff is in treble clef with a 7/4 time signature. The middle and bottom staves are part of a grand staff with piano accompaniment. The music is divided into two measures by a vertical bar line. The first measure contains several chords and a melodic line in the piano part. The second measure continues the composition with similar harmonic and melodic elements.

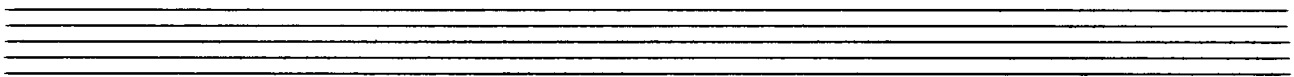
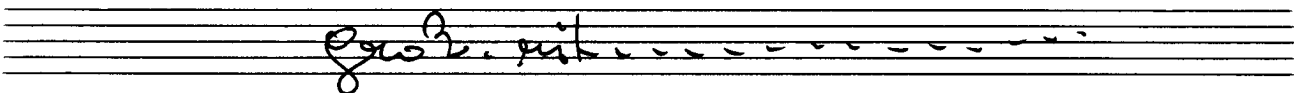
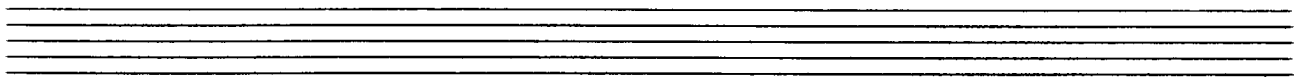


immer breiter werden

Handwritten musical notation for the first system. It consists of a treble clef staff with a grand staff below it. The grand staff has two staves: the upper one for the right hand and the lower one for the left hand. The right hand part features a melodic line with a triplet of eighth notes at the end. The left hand part has a simple accompaniment. There are some scribbles and corrections in the treble clef staff.

Handwritten musical notation for the second system, similar to the first. It features a treble clef staff and a grand staff. The right hand part has a melodic line with a triplet of eighth notes. The left hand part has a simple accompaniment. There are some scribbles and corrections in the treble clef staff.

Handwritten musical notation for the third system. It features a treble clef staff and a grand staff. The right hand part has a more complex melodic line with many notes and accidentals. The left hand part has a simple accompaniment. There are some scribbles and corrections in the treble clef staff.



lange halten!

Ende

1942

Adolf  
Scherbaum