

IMPROVISATIONEN

ÜBER EINEN CHORAL

(FÜR ORGEL)

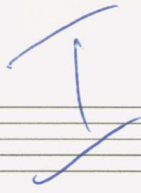
1972

Adolf Scherbaum

(WIR EHREN DICH) —

Teil [1]

Lento



Handwritten musical score for the first system, consisting of four staves labeled 1, 2, B, and C/B. The notation includes various notes, rests, and accidentals (sharps and flats) across three measures.

Handwritten musical score for the second system, consisting of four staves. The notation includes various notes, rests, and accidentals, with a large blue slur spanning across the bottom two staves in the second and third measures.

Handwritten musical score for the first system, consisting of four staves. The notation includes various notes, rests, and chord symbols. A large slur covers the first two staves across the first two measures. Chord symbols above the staves include  $\#7$ ,  $b7$ ,  $\#$ , and  $b$ . The bottom staff contains a complex rhythmic pattern with notes and rests.

din

Handwritten musical score for the second system, consisting of four staves. The notation includes notes, rests, and dynamic markings such as  $\textcircled{p}$ . A large slur covers the first two staves across the first two measures. The bottom staff contains a complex rhythmic pattern with notes and rests.







Handwritten musical notation for the first system, featuring a treble and bass staff with a long slur across both. The treble staff contains notes G4, A4, B4, C5, and D5. The bass staff contains notes G3, A3, B3, C4, and D4.

Handwritten musical notation for the second system, featuring a treble and bass staff with a long slur across both. The treble staff contains notes G4, A4, B4, C5, and D5. The bass staff contains notes G3, A3, B3, C4, and D4.

Handwritten musical notation for the third system, featuring a treble and bass staff with a long slur across both. The treble staff contains notes G4, A4, B4, C5, and D5. The bass staff contains notes G3, A3, B3, C4, and D4.

Handwritten musical notation for the fourth system, featuring a treble and bass staff with a long slur across both. The treble staff contains notes G4, A4, B4, C5, and D5. The bass staff contains notes G3, A3, B3, C4, and D4.

Handwritten musical notation for the first system. The treble clef staff contains a melodic line with a long slur over four measures, starting with a G4 and moving through A4, B4, and C5. The bass clef staff contains a bass line with notes G3, A3, B3, and C4, also with a long slur.

Handwritten musical notation for the second system. The treble clef staff features a melodic line with eighth notes and accidentals (sharps and flats) across four measures. The bass clef staff has a bass line with quarter notes and a long slur.

Handwritten musical notation for the third system. The treble clef staff continues the melodic line with eighth notes and accidentals. The bass clef staff has a bass line with quarter notes and a long slur.

Handwritten musical notation for the fourth system. The treble clef staff concludes the melodic line with eighth notes and accidentals. The bass clef staff has a bass line with quarter notes and a long slur.



Handwritten musical notation for the first system. The treble clef staff shows a melody in G major (one sharp) and 9/8 time. The first two measures are slurred together. The bass staff provides a simple accompaniment, ending with a double bar line and repeat sign.

Handwritten musical notation for the second system. The treble clef staff continues the melody with a long slur over all three measures. The bass staff includes chordal accompaniment with a repeat sign in the second measure.

Handwritten musical notation for the third system. The treble clef staff continues the melody with a long slur over all three measures. The bass staff includes chordal accompaniment with a repeat sign in the second measure.

Handwritten musical notation for the fourth system. The treble clef staff continues the melody with a long slur over all three measures. The bass staff includes chordal accompaniment with a repeat sign in the second measure.



Handwritten musical notation for the first system. The top staff is a treble clef with a melodic line consisting of four quarter notes, followed by two half notes, and a whole note, all under a slur. The bottom staff is a bass clef with a chordal accompaniment. The first measure contains a chord with a flat and eighth notes. The second measure contains a chord with a flat and eighth notes. The third measure contains a chord with a flat and eighth notes. The fourth measure contains a chord with a flat and eighth notes. The fifth measure contains a chord with a flat and eighth notes. The sixth measure contains a chord with a flat and eighth notes. The seventh measure contains a chord with a flat and eighth notes. The eighth measure contains a chord with a flat and eighth notes. The ninth measure contains a chord with a flat and eighth notes. The tenth measure contains a chord with a flat and eighth notes. The eleventh measure contains a chord with a flat and eighth notes. The twelfth measure contains a chord with a flat and eighth notes. The thirteenth measure contains a chord with a flat and eighth notes. The fourteenth measure contains a chord with a flat and eighth notes. The fifteenth measure contains a chord with a flat and eighth notes. The sixteenth measure contains a chord with a flat and eighth notes. The seventeenth measure contains a chord with a flat and eighth notes. The eighteenth measure contains a chord with a flat and eighth notes. The nineteenth measure contains a chord with a flat and eighth notes. The twentieth measure contains a chord with a flat and eighth notes.

Handwritten musical notation for the second system. The top staff is a treble clef with a melodic line consisting of a quarter note, followed by two quarter notes, and a half note, all under a slur. The bottom staff is a bass clef with a chordal accompaniment. The first measure contains a chord with a flat and eighth notes. The second measure contains a chord with a flat and eighth notes. The third measure contains a chord with a flat and eighth notes. The fourth measure contains a chord with a flat and eighth notes. The fifth measure contains a chord with a flat and eighth notes. The sixth measure contains a chord with a flat and eighth notes. The seventh measure contains a chord with a flat and eighth notes. The eighth measure contains a chord with a flat and eighth notes. The ninth measure contains a chord with a flat and eighth notes. The tenth measure contains a chord with a flat and eighth notes. The eleventh measure contains a chord with a flat and eighth notes. The twelfth measure contains a chord with a flat and eighth notes. The thirteenth measure contains a chord with a flat and eighth notes. The fourteenth measure contains a chord with a flat and eighth notes. The fifteenth measure contains a chord with a flat and eighth notes. The sixteenth measure contains a chord with a flat and eighth notes. The seventeenth measure contains a chord with a flat and eighth notes. The eighteenth measure contains a chord with a flat and eighth notes. The nineteenth measure contains a chord with a flat and eighth notes. The twentieth measure contains a chord with a flat and eighth notes.

Handwritten musical notation for the third system. The top staff is a treble clef with a melodic line consisting of a quarter note, followed by two quarter notes, and a half note, all under a slur. The bottom staff is a bass clef with a chordal accompaniment. The first measure contains a chord with a flat and eighth notes. The second measure contains a chord with a flat and eighth notes. The third measure contains a chord with a flat and eighth notes. The fourth measure contains a chord with a flat and eighth notes. The fifth measure contains a chord with a flat and eighth notes. The sixth measure contains a chord with a flat and eighth notes. The seventh measure contains a chord with a flat and eighth notes. The eighth measure contains a chord with a flat and eighth notes. The ninth measure contains a chord with a flat and eighth notes. The tenth measure contains a chord with a flat and eighth notes. The eleventh measure contains a chord with a flat and eighth notes. The twelfth measure contains a chord with a flat and eighth notes. The thirteenth measure contains a chord with a flat and eighth notes. The fourteenth measure contains a chord with a flat and eighth notes. The fifteenth measure contains a chord with a flat and eighth notes. The sixteenth measure contains a chord with a flat and eighth notes. The seventeenth measure contains a chord with a flat and eighth notes. The eighteenth measure contains a chord with a flat and eighth notes. The nineteenth measure contains a chord with a flat and eighth notes. The twentieth measure contains a chord with a flat and eighth notes.

Handwritten musical notation for the first system, consisting of two staves. The upper staff contains a melodic line with a long slur over four measures. The lower staff contains a bass line with chords and rhythmic markings.

Handwritten musical notation for the second system, consisting of two staves. The upper staff continues the melodic line with a slur. The lower staff continues the bass line with chords and rhythmic markings.

Handwritten musical notation for the third system, consisting of two staves. The upper staff contains a melodic line with a slur. The lower staff contains a bass line with chords and rhythmic markings.

Handwritten musical notation for the fourth system, consisting of two staves. The upper staff contains a melodic line with a slur. The lower staff contains a bass line with chords and rhythmic markings.



Handwritten musical notation for the first system. It consists of a treble clef staff with a melodic line and a grand staff with two bass clef staves. The first measure contains a chord with a sharp sign and the number 8. The second measure contains a chord with the numbers 4, 7, and 8. A large blue slur covers the entire system.

Handwritten musical notation for the second system. It consists of a treble clef staff with a melodic line and a grand staff with two bass clef staves. The first measure contains a chord with the number 8. The second measure contains a chord with a sharp sign and the number 8. A large blue slur covers the entire system.

Handwritten musical notation for the third system. It consists of a treble clef staff with a melodic line and a grand staff with two bass clef staves. The first measure contains a chord with the numbers 4, 7, and 8. The second measure contains a chord with the number 8. A large blue slur covers the entire system.



Handwritten musical notation for the first system. It features a treble clef, a key signature of one sharp (F#), and a 10/8 time signature. The notation includes a melodic line with a slur, a bass line with a slur, and a lower staff with a slur. The piece concludes with a fermata.

Handwritten musical notation for the second system, continuing the melodic and bass lines from the first system. It includes a treble clef and a 10/8 time signature.

Handwritten musical notation for the third system, continuing the melodic and bass lines from the second system. It includes a treble clef and a 10/8 time signature.

Handwritten musical notation for the first system. The treble clef part features a melodic line with a slur and a fermata over the first measure, followed by a chord. The second measure continues the melodic phrase with a slur and a fermata, followed by a chord. The bass clef part shows a chord with a sharp sign and a 9/8 time signature.

Handwritten musical notation for the second system. The treble clef part features a melodic line with a slur and a fermata over the first measure, followed by a chord. The second measure continues the melodic phrase with a slur and a fermata, followed by a chord. The bass clef part shows a chord with a sharp sign and a 9/8 time signature.

Handwritten musical notation for the third system. The treble clef part features a melodic line with a slur and a fermata over the first measure, followed by a chord. The second measure continues the melodic phrase with a slur and a fermata, followed by a chord. The bass clef part shows a chord with a sharp sign and a 9/8 time signature.



Handwritten musical notation for the first system. It features a treble clef on the left. The notation is spread across three staves. A large blue slur covers the first two staves. The first staff contains several notes with stems, some with flags, and a '9' marking. The second staff contains notes with stems and a '9' marking. The third staff contains a few notes and rests. A 'rit.' marking is present in the second measure.

Handwritten musical notation for the second system. It features a treble clef on the left. The notation is spread across three staves. A large blue slur covers the first two staves. The first staff contains several notes with stems, some with flags, and a '9' marking. The second staff contains notes with stems and a '9' marking. The third staff contains a few notes and rests. A 'rit.' marking is present in the second measure.

Handwritten musical notation for the third system. It features a treble clef on the left. The notation is spread across three staves. A large blue slur covers the first two staves. The first staff contains several notes with stems, some with flags, and a '9' marking. The second staff contains notes with stems and a '9' marking. The third staff contains a few notes and rests. A 'rit.' marking is present in the second measure.



Scherba (appassionata)

Handwritten musical notation for the first system. It consists of a grand staff with treble and bass clefs. The notation includes various notes, accidentals (sharps, flats, naturals), and dynamic markings such as  $\text{p}$  and  $\text{pp}$ . There are also some handwritten annotations like  $\text{C} \text{D} \text{D} \text{D}$  and  $\text{C} \text{D} \text{D} \text{D}$  above the staff.

Handwritten musical notation for the second system. It continues the piece with similar notation and dynamics. The notation includes notes, accidentals, and dynamic markings like  $\text{p}$  and  $\text{pp}$ . There are also some handwritten annotations like  $\text{C} \text{D} \text{D} \text{D}$  and  $\text{C} \text{D} \text{D} \text{D}$  above the staff.

Handwritten musical notation for the third system. It concludes the piece with notes and accidentals. The notation includes notes, accidentals, and dynamic markings like  $\text{p}$  and  $\text{pp}$ . There are also some handwritten annotations like  $\text{C} \text{D} \text{D} \text{D}$  and  $\text{C} \text{D} \text{D} \text{D}$  above the staff.

(vorsüßts)

Handwritten musical notation for the first system, consisting of three staves. The top staff is in treble clef, and the bottom two are in bass clef. The music is written in blue ink and includes various notes, rests, and slurs. The first staff has a treble clef and contains a melodic line with notes and slurs. The second staff has a bass clef and contains a similar melodic line. The third staff has a bass clef and contains a bass line with notes and slurs.

Handwritten musical notation for the second system, consisting of three staves. The top staff is in treble clef, and the bottom two are in bass clef. The music is written in blue ink and includes various notes, rests, and slurs. The first staff has a treble clef and contains a melodic line with notes and slurs. The second staff has a bass clef and contains a similar melodic line. The third staff has a bass clef and contains a bass line with notes and slurs. The word "zurück" is written in the middle of the second staff.

gut...

Handwritten musical notation for the third system, consisting of three staves. The top staff is in treble clef, and the bottom two are in bass clef. The music is written in blue ink and includes various notes, rests, and slurs. The first staff has a treble clef and contains a melodic line with notes and slurs. The second staff has a bass clef and contains a similar melodic line. The third staff has a bass clef and contains a bass line with notes and slurs.



sehr  
erregte  $\frac{4}{4}$  (frei)

Handwritten musical notation for the first system. It consists of a grand staff with a treble clef on the upper staff and a bass clef on the lower staff. The time signature is  $\frac{4}{4}$  and the key signature is one flat (B-flat). The upper staff contains a melodic line with a long slur over two measures. The lower staff contains a bass line with rhythmic patterns of eighth notes, also with a slur over two measures.

Handwritten musical notation for the second system. It consists of a grand staff with a treble clef on the upper staff and a bass clef on the lower staff. The upper staff contains a melodic line with a long slur over two measures. The lower staff contains a bass line with rhythmic patterns of eighth notes, also with a slur over two measures.

Handwritten musical notation for the third system. It consists of a grand staff with a treble clef on the upper staff and a bass clef on the lower staff. The upper staff contains a melodic line with a long slur over two measures. The lower staff contains a bass line with rhythmic patterns of eighth notes, also with a slur over two measures.

Handwritten musical notation for the fourth system. It consists of a grand staff with a treble clef on the upper staff and a bass clef on the lower staff. The upper staff contains a melodic line with a long slur over two measures. The lower staff contains a bass line with rhythmic patterns of eighth notes, also with a slur over two measures.



Handwritten musical notation for the first system. It features a grand staff with treble and bass clefs. The right hand has a melodic line starting with a B-flat and a whole note, followed by a long slur. The left hand has a rhythmic accompaniment of eighth notes. A vertical bar line is present.

Handwritten musical notation for the second system. Similar to the first, it shows a grand staff with treble and bass clefs. The right hand has a melodic line with a slur and a fermata. The left hand has eighth-note accompaniment. A vertical bar line is present.

Handwritten musical notation for the third system. It features a grand staff with treble and bass clefs. The right hand has a melodic line with a slur and a fermata. The left hand has eighth-note accompaniment. A vertical bar line is present.





Handwritten musical notation for the first system. The treble clef staff contains a sequence of notes: G4 (sharp), A4 (sharp), B4 (flat), C5 (flat), D5 (flat), E5 (flat), F5 (sharp), G5 (sharp), A5 (flat), B5 (flat). The bass clef staff contains notes: G3, A3, B3 (flat), C4, D4, E4, F4 (flat), G4. A large blue slur covers the entire system.

Handwritten musical notation for the second system. The treble clef staff contains notes: G4, A4, B4, C5, D5, E5, F5 (sharp), G5, A5, B5. The bass clef staff contains notes: G3, A3, B3, C4, D4, E4, F4 (flat), G4. A triplet of notes (G4, A4, B4) is marked with a '3' above it. A 4-measure rest is marked with a '4' above it. A large blue slur covers the entire system.

Handwritten musical notation for the third system. The treble clef staff contains notes: G4 (sharp), A4 (sharp), B4 (sharp), C5 (flat), D5 (flat), E5, F5, G5, A5, B5. The bass clef staff contains notes: G3, A3, B3, C4, D4, E4, F4, G4. A large blue slur covers the entire system.

Handwritten musical notation for the fourth system. The treble clef staff contains notes: G4 (sharp), A4, B4, C5, D5, E5, F5, G5, A5, B5. The bass clef staff contains notes: G3, A3, B3, C4, D4, E4, F4, G4. A large blue slur covers the entire system.

(frei)

pp

pp

pp

pp



Handwritten musical notation for the first system. The treble clef staff contains a melodic line with a long slur. The bass clef staff contains a melodic line with quarter notes and slurs. The key signature is two sharps (F# and C#) and the time signature is common time (C).

Handwritten musical notation for the second system. The treble clef staff contains a melodic line with a long slur. The bass clef staff contains a melodic line with quarter notes and slurs. The key signature is two sharps (F# and C#) and the time signature is common time (C).

Handwritten musical notation for the third system. The treble clef staff contains a melodic line with a long slur. The bass clef staff contains a melodic line with quarter notes and slurs. The key signature is two sharps (F# and C#) and the time signature is common time (C).

Handwritten musical notation for the fourth system. The treble clef staff contains a melodic line with a long slur. The bass clef staff contains a melodic line with quarter notes and slurs. The key signature is two sharps (F# and C#) and the time signature is common time (C).





#PAGELO (mysterioso) (Sempre crescendo)

Handwritten musical notation for the first system. It features a treble clef and a circled 'ppp' dynamic marking. The time signature is 4/4. The notation includes notes with accidentals (flats and sharps) and slurs, indicating a melodic line. There are also some scribbled-out notes and a vertical bar line.

Handwritten musical notation for the second system. It features a treble clef and a circled 'pp' dynamic marking. The notation includes notes with accidentals and slurs, continuing the melodic line from the first system. There are also some scribbled-out notes and a vertical bar line.

Handwritten musical notation for the third system. It features a treble clef and notes with accidentals and slurs, continuing the melodic line. There are also some scribbled-out notes and a vertical bar line.







Handwritten musical score for the first system. It consists of three staves. The top staff is a treble clef with a key signature of one flat (B-flat). The middle and bottom staves are a grand staff (treble and bass clefs). The music is divided into two measures by a vertical bar line. Above the first measure, there are notes: B-flat, D, F, A, B-flat, D. Above the second measure, there are notes: D, B-flat, D, B-flat, D. The grand staff contains various rhythmic patterns, including eighth and sixteenth notes, and rests. A large slur covers the entire system.

Handwritten musical score for the second system. It consists of three staves. The top staff is a treble clef with a key signature of one flat (B-flat). The middle and bottom staves are a grand staff (treble and bass clefs). The music is divided into two measures by a vertical bar line. Above the first measure, there are notes: B-flat, D, B-flat, D, B-flat, D. Above the second measure, there are notes: D, B-flat, D, B-flat, D. The grand staff contains various rhythmic patterns, including eighth and sixteenth notes, and rests. A large slur covers the entire system.

Handwritten musical score for the third system. It consists of three staves. The top staff is a treble clef with a key signature of one flat (B-flat). The middle and bottom staves are a grand staff (treble and bass clefs). The music is divided into two measures by a vertical bar line. Above the first measure, there are notes: B-flat, D, B-flat, D, B-flat, D. Above the second measure, there are notes: D, B-flat, D, B-flat, D. The grand staff contains various rhythmic patterns, including eighth and sixteenth notes, and rests. A large slur covers the entire system.



Handwritten musical notation for the first system. The top staff (treble clef) contains notes:  $\flat d$ ,  $\flat d$ ,  $\flat d$ ,  $\flat d$ ,  $\flat d$ ,  $\flat d$ ,  $\flat d$ ,  $\flat d$ . The middle staff (grand staff) shows chords and arpeggios:  $\#$  followed by four notes, then four notes, and finally four notes with a  $\flat$  sign. The bottom staff (bass clef) contains a whole note chord.

Handwritten musical notation for the second system. The top staff (treble clef) contains notes:  $\flat d$ ,  $\flat d$ ,  $\flat d$ ,  $\flat d$ ,  $\flat d$ ,  $\flat d$ ,  $\flat d$ ,  $\flat d$ . The middle staff (grand staff) shows chords and arpeggios: four notes, four notes, and four notes with a  $\flat$  sign. The bottom staff (bass clef) contains a whole note chord.

Handwritten musical notation for the third system. The top staff (treble clef) contains notes:  $\flat d$ ,  $\flat d$ ,  $\flat d$ ,  $\flat d$ . The middle staff (grand staff) shows chords and arpeggios: four notes, four notes with a  $\#$  sign, four notes with a  $\flat$  sign, four notes, four notes with a  $\flat$  sign, and four notes with a  $\flat$  sign. The bottom staff (bass clef) contains a whole note chord.





Handwritten musical notation for the first system, featuring a treble and bass staff with a key signature of one sharp (F#) and a common time signature. The melody in the treble staff is marked with a slur and includes a fermata. The bass staff contains a simple accompaniment with a fermata.

(2te xid.

Handwritten musical notation for the second system, featuring a treble and bass staff with a key signature of one flat (Bb) and a common time signature. The melody in the treble staff is marked with a slur and includes a fermata. The bass staff contains a simple accompaniment with a fermata.

Handwritten musical notation for the third system, featuring three staves. The top two staves are treble clef with a key signature of one flat (Bb) and a common time signature, showing chords and slurs. The bottom staff is a bass clef with a common time signature, showing a rhythmic accompaniment with slurs and a fermata.

sehr breit ausladend

voll Werk

The image shows three systems of handwritten musical notation for organ improvisation. Each system consists of three staves: a treble clef staff, an alto clef staff, and a bass clef staff. The notation is written in blue ink and includes various chords and melodic lines. The first system is labeled 'voll Werk' and features a wide, sweeping line across the top of the staves. The second system continues the improvisation with similar wide lines. The third system also maintains the wide, sweeping lines. The chords and notes are often written in a shorthand style, with some notes having accidentals (sharps and flats) and some being beamed together. The overall style is that of a personal sketch or study for improvisation.





Handwritten musical notation for the first system. It features a treble clef, a key signature of one flat (B-flat), and a 4/4 time signature. The notation includes a melodic line with a slur, a bass line with chords, and a lower staff with notes.

Handwritten musical notation for the second system, continuing the piece with similar notation to the first system.

*for. rit.*

Handwritten musical notation for the third system, marked "for. rit." (forzando, ritardando). The notation shows a treble clef, a key signature of one flat, and a 4/4 time signature. It includes a melodic line with a slur, a bass line with chords, and a lower staff with notes. The system ends with a double bar line and a wavy line indicating a fermata.



IMPROVISATIONEN

ÜBER EINEN CHORAL  
( FÜR ORGEL )

1972

Adolf Scherbaum

Teil [2]

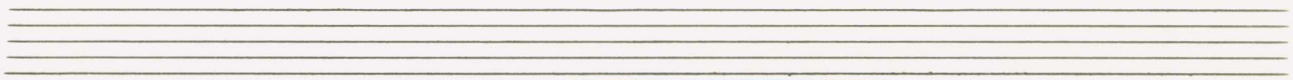
Allegro

Handwritten musical notation for the first system, featuring a treble clef, a key signature of one sharp (F#), and a 12/8 time signature. The notation includes a circled 'f' and a large blue slur.

Handwritten musical notation for the second system, featuring a treble clef and a key signature of one sharp (F#). The notation includes a large blue slur.

Handwritten musical notation for the third system, featuring a treble clef and a key signature of one sharp (F#). The notation includes a large blue slur.





Handwritten musical notation for the first system, consisting of two staves. The upper staff is in treble clef and contains a melodic line with a slur over the first two measures. The lower staff is in bass clef and contains a bass line with a slur over the first two measures. The notation includes various notes, rests, and accidentals.

Handwritten musical notation for the second system, consisting of two staves. The upper staff is in treble clef and contains a melodic line with a slur over the first two measures. The lower staff is in bass clef and contains a bass line with a slur over the first two measures. The notation includes various notes, rests, and accidentals.

Handwritten musical notation for the third system, consisting of two staves. The upper staff is in treble clef and contains a melodic line with a slur over the first two measures. The lower staff is in bass clef and contains a bass line with a slur over the first two measures. The notation includes various notes, rests, and accidentals.

Handwritten musical notation for the fourth system, consisting of two staves. The upper staff is in treble clef and contains a melodic line with a slur over the first two measures. The lower staff is in bass clef and contains a bass line with a slur over the first two measures. The notation includes various notes, rests, and accidentals.

Handwritten musical notation for the first system. The top staff is in treble clef and the bottom staff is in bass clef. The music consists of several measures with notes, rests, and accidentals. A large blue slur covers the top staff across the first two measures. The bottom staff contains rhythmic markings and notes.

Handwritten musical notation for the second system. The top staff is in treble clef and the bottom staff is in bass clef. The music continues with notes, rests, and accidentals. A large blue slur covers the top staff across the first two measures. The bottom staff contains rhythmic markings and notes.

Handwritten musical notation for the third system. The top staff is in treble clef and the bottom staff is in bass clef. The music continues with notes, rests, and accidentals. A large blue slur covers the top staff across the first two measures. The bottom staff contains rhythmic markings and notes.

Handwritten musical notation for the fourth system. The top staff is in treble clef and the bottom staff is in bass clef. The music concludes with notes, rests, and accidentals. A large blue slur covers the top staff across the first two measures. The bottom staff contains rhythmic markings and notes.



Handwritten musical notation for the first system. The top staff is in treble clef and contains a series of chords and notes, with a large slur over the first four measures. The bottom staff is in bass clef and contains rhythmic patterns and notes, with a slur over the last two measures.

Handwritten musical notation for the second system. The top staff is in treble clef and contains a series of chords and notes, with a large slur over the first four measures. The bottom staff is in bass clef and contains rhythmic patterns and notes, with a slur over the last two measures.

Handwritten musical notation for the third system. The top staff is in treble clef and contains a series of chords and notes, with a large slur over the first four measures. The bottom staff is in bass clef and contains rhythmic patterns and notes, with a slur over the last two measures.

Handwritten musical notation for the fourth system. The top staff is in treble clef and contains a series of chords and notes, with a large slur over the first four measures. The bottom staff is in bass clef and contains rhythmic patterns and notes, with a slur over the last two measures.

Handwritten musical notation for the first system. The treble clef staff contains a melodic line with a slur over the first two measures, followed by chords in the third and fourth measures. The bass clef staff contains a bass line with eighth notes and chords. A sharp sign is present in the second measure of the bass line.

Handwritten musical notation for the second system. The treble clef staff continues the melodic line with a slur over the first two measures. The bass clef staff continues the bass line with eighth notes and chords. A sharp sign is present in the second measure of the bass line.

Handwritten musical notation for the third system. The treble clef staff continues the melodic line with a slur over the first two measures. The bass clef staff continues the bass line with eighth notes and chords. A sharp sign is present in the second measure of the bass line.

Handwritten musical notation for the fourth system. The treble clef staff continues the melodic line with a slur over the first two measures. The bass clef staff continues the bass line with eighth notes and chords. A sharp sign is present in the second measure of the bass line.



Handwritten musical notation for the first system. The treble staff contains a series of chords and melodic lines, all under a large slur. The bass staff contains a melodic line with eighth and sixteenth notes.

Handwritten musical notation for the second system. The treble staff has a large slur covering the first half, followed by a melodic line. The bass staff has a melodic line with a small accent (^) above a note.

Handwritten musical notation for the third system. The treble staff has a large slur covering the first half, followed by a melodic line. The bass staff has a melodic line. A handwritten note "letzte + ev. rit-----" is written in the right margin.

Handwritten musical notation for the fourth system. The treble staff has a large slur covering the first half, followed by a melodic line. The bass staff has a melodic line. A box labeled "FINE" is written in the right margin.

*f* *Andante* (sehr ruhig)



Handwritten musical notation for the first system. It consists of two staves. The upper staff is in treble clef with a key signature of one sharp (F#) and a 3/4 time signature. It features a melodic line with a slur over two measures, followed by a whole note in the third measure. The lower staff contains chords and a whole note in the third measure.

Handwritten musical notation for the second system. It consists of two staves. The upper staff is in treble clef with a key signature of one sharp (F#) and a 3/4 time signature. It features a melodic line with a slur over two measures, followed by a whole note in the third measure. The lower staff contains chords and a whole note in the third measure.

Handwritten musical notation for the third system. It consists of two staves. The upper staff is in treble clef with a key signature of one sharp (F#) and a 3/4 time signature. It features a melodic line with a slur over two measures, followed by a whole note in the third measure. The lower staff contains chords and a whole note in the third measure.

rit ~~~~~

D.C.  
Allegro  $\frac{12}{8}$   
al  
Fine



sehr langsam (ruhig)

Handwritten musical notation for the first system. It features a treble clef and a bass clef. The time signature is 4/4. The dynamic marking is *pp* (pianissimo). The melody in the treble clef consists of two measures of music with various accidentals (flats and naturals). The bass clef part consists of two measures of music with a flat and a natural.

Handwritten musical notation for the second system. It continues the melody and bass line from the first system. The treble clef part has two measures of music with various accidentals. The bass clef part has two measures of music with a flat and a natural.

Handwritten musical notation for the third system. It continues the melody and bass line from the second system. The treble clef part has two measures of music with various accidentals, including a sharp sign. The bass clef part has two measures of music with a flat and a natural.

Handwritten musical notation for the first system. The top staff is in treble clef and contains three measures of music with notes and accidentals (flats and sharps). A large blue slur arches over the entire system. The bottom staff is in bass clef and contains two measures with notes and accidentals.

Handwritten musical notation for the second system. The top staff is in treble clef and contains three measures of music with notes and accidentals. A large blue slur arches over the entire system. The bottom staff is in bass clef and contains three measures with notes and accidentals.

Handwritten musical notation for the third system. The top staff is in treble clef and contains two measures of music with notes and accidentals. A large blue slur arches over the entire system. The bottom staff is in bass clef and contains two measures with notes and accidentals.

Four empty musical staves, each consisting of five horizontal lines.



Handwritten musical notation on a grand staff. The right hand (treble clef) plays a melodic line with a slur over two measures. The left hand (bass clef) plays a bass line with a slur over two measures. The notation includes notes, rests, and accidentals (flats). The first measure of the right hand has a flat on the second note, and the second measure has flats on the first and second notes. The left hand has a flat on the first note of the first measure and a flat on the first note of the second measure. The time signature is 4/4.

Handwritten musical notation on a grand staff. The right hand (treble clef) plays a melodic line with a slur over two measures. The left hand (bass clef) plays a bass line with a slur over two measures. The notation includes notes, rests, and accidentals (sharps). The first measure of the right hand has a sharp on the second note, and the second measure has sharps on the first and second notes. The left hand has a sharp on the first note of the first measure and a sharp on the first note of the second measure. The time signature is 4/4.

Handwritten musical notation on a grand staff. The right hand (treble clef) plays a melodic line with a slur over two measures. The left hand (bass clef) plays a bass line with a slur over two measures. The notation includes notes, rests, and accidentals (sharps). The first measure of the right hand has a sharp on the second note, and the second measure has sharps on the first and second notes. The left hand has a sharp on the first note of the first measure and a sharp on the first note of the second measure. The time signature is 4/4.

Handwritten musical notation for the first system. It consists of two staves. The upper staff is in treble clef and contains a melodic line with a large blue slur spanning across it. The lower staff is in bass clef and contains a bass line with some notes and rests.

Handwritten musical notation for the second system. It consists of two staves. The upper staff is in treble clef and contains a melodic line with a large blue slur. The lower staff is in bass clef and contains a bass line with a sharp and flat symbol (F# and F) written above the notes.

Handwritten musical notation for the third system. It consists of two staves. The upper staff is in treble clef and contains a melodic line with a large blue slur. The lower staff is in bass clef and contains a bass line with notes and rests.



Handwritten musical notation for the first system. It consists of two staves: a treble clef staff and a bass clef staff. A large blue slur arches over the entire system. The first measure shows a treble staff with a half note G4, a quarter note A4, and a half note B4, with a slur over the last two notes. The bass staff has a half note G2, a quarter note A2, and a half note B2, with a slur over the last two notes. The second measure shows a treble staff with a half note G4, a quarter note A4, and a half note B4, with a slur over the last two notes. The bass staff has a half note G2, a quarter note A2, and a half note B2, with a slur over the last two notes.

Handwritten musical notation for the second system. It consists of two staves: a treble clef staff and a bass clef staff. A large blue slur arches over the entire system. The first measure shows a treble staff with a half note G4, a quarter note A4, and a half note B4, with a slur over the last two notes. The bass staff has a half note G2, a quarter note A2, and a half note B2, with a slur over the last two notes. The second measure shows a treble staff with a half note G4, a quarter note A4, and a half note B4, with a slur over the last two notes. The bass staff has a half note G2, a quarter note A2, and a half note B2, with a slur over the last two notes.

Handwritten musical notation for the third system. It consists of two staves: a treble clef staff and a bass clef staff. A large blue slur arches over the entire system. The first measure shows a treble staff with a half note G4, a quarter note A4, and a half note B4, with a slur over the last two notes. The bass staff has a half note G2, a quarter note A2, and a half note B2, with a slur over the last two notes. The second measure shows a treble staff with a half note G4, a quarter note A4, and a half note B4, with a slur over the last two notes. The bass staff has a half note G2, a quarter note A2, and a half note B2, with a slur over the last two notes.

rit-----

pp



gr. rit...

Handwritten musical notation on two staves. The top staff is in treble clef and the bottom in bass clef. The music consists of three measures. The first measure has a half note G4 in the treble and a half note G2 in the bass. The second measure has a half note A4 in the treble and a half note A2 in the bass. The third measure has a half note B4 in the treble and a half note B2 in the bass. There are various markings including slurs, ties, and dynamic markings like 'p' and '9'.

suber breit ausladend

vollwerk

frei gebote

vorwärts



Handwritten musical score for the first system. It consists of three staves: a treble clef staff at the top, a piano staff in the middle, and a bass clef staff at the bottom. The treble staff contains two measures of music with notes and accidentals (sharps and naturals). The piano staff shows chords and melodic lines with slurs. The bass staff has a few notes and rests.

quod.

Handwritten musical score for the second system. It features three staves: treble, piano, and bass. The treble staff has two measures of music. The piano staff contains chords and slurs, with the word "allegro" written twice. The bass staff has notes and rests.

Handwritten musical score for the third system. It features three staves: treble, piano, and bass. The treble staff has two measures of music. The piano staff contains chords and slurs, with the word "allegro" written twice. The bass staff has notes and rests, and the word "con wobb" is written in the center.

Handwritten musical score for the first system. It consists of two staves. The upper staff is in treble clef and contains a melodic line with various note values and slurs. The lower staff is in bass clef and contains a bass line with fewer notes. The key signature is one sharp (F#) and the time signature is 10/8. There is a double bar line in the middle of the system.

Handwritten musical score for the second system. It consists of two staves. The upper staff is in treble clef and contains a melodic line with various note values and slurs. The lower staff is in bass clef and contains a bass line with fewer notes. The key signature is one sharp (F#) and the time signature is 8/8. The word "Cello" is written in the middle of the system. There is a double bar line in the middle of the system.

Handwritten musical score for the third system. It consists of two staves. The upper staff is in treble clef and contains a melodic line with various note values and slurs. The lower staff is in bass clef and contains a bass line with fewer notes. The key signature is one sharp (F#) and the time signature is 8/8. There is a double bar line in the middle of the system.



wieder weiter werden

so rasch als möglich

Handwritten musical notation for the first system, featuring a grand staff with treble and bass clefs. The right hand has a treble clef and the left hand has a bass clef. The music is in 4/4 time, indicated by a '4' in the top left. The key signature is B-flat major, indicated by a 'b' before the '4'. The first measure is marked with '7H' and the second with '8g'. The notation includes chords and melodic lines with slurs.

Handwritten musical notation for the second system, featuring a grand staff with treble and bass clefs. The right hand has a treble clef and the left hand has a bass clef. The music is in 4/4 time. The key signature is B-flat major, indicated by a 'b' before the '4'. The first measure is marked with '8g' and the second with '8g'. The notation includes chords and melodic lines with slurs.

Handwritten musical notation for the third system, featuring a grand staff with treble and bass clefs. The right hand has a treble clef and the left hand has a bass clef. The music is in 4/4 time. The key signature is B-flat major, indicated by a 'b' before the '4'. The first measure is marked with '8g' and the second with '8g'. The notation includes chords and melodic lines with slurs.



Handwritten musical score for the first system. It consists of three staves. The top staff is a treble clef with a key signature of three flats (B-flat, E-flat, A-flat) and a common time signature. It contains two measures of music, each with a complex chordal texture of many notes, some with stems pointing upwards. The middle staff is a bass clef with a simple bass line consisting of three notes in each measure. The bottom staff is a treble clef with a simple bass line consisting of three notes in each measure. There are some handwritten annotations above the first measure, including a key signature change and a common time signature.

Handwritten musical score for the second system. It consists of three staves. The top staff is a treble clef with a key signature of two flats (B-flat, E-flat) and a common time signature. It contains two measures of music, each with a complex chordal texture of many notes, some with stems pointing upwards. The middle staff is a bass clef with a simple bass line consisting of two notes in each measure. The bottom staff is a treble clef with a simple bass line consisting of two notes in each measure. There are some handwritten annotations above the first measure, including a key signature change and a common time signature.

Handwritten musical score for the third system. It consists of three staves. The top staff is a treble clef with a key signature of two flats (B-flat, E-flat) and a common time signature. It contains two measures of music, each with a complex chordal texture of many notes, some with stems pointing upwards. The middle staff is a bass clef with a simple bass line consisting of two notes in each measure. The bottom staff is a treble clef with a simple bass line consisting of two notes in each measure. There are some handwritten annotations above the first measure, including a key signature change and a common time signature.

Handwritten musical score for the first system. It consists of three staves. The top staff has a treble clef and contains two measures of music with notes and rests. The middle staff has a treble clef and contains two measures of music with notes and rests. The bottom staff has a bass clef and contains two measures of music with notes and rests. The system is enclosed in a large blue bracket on the left side.

Handwritten musical score for the second system. It consists of three staves. The top staff has a treble clef and contains two measures of music with notes and rests. The middle staff has a treble clef and contains two measures of music with notes and rests. The bottom staff has a bass clef and contains two measures of music with notes and rests. The system is enclosed in a large blue bracket on the left side.

Handwritten musical score for the third system. It consists of three staves. The top staff has a treble clef and contains two measures of music with notes and rests. The middle staff has a treble clef and contains two measures of music with notes and rests. The bottom staff has a bass clef and contains two measures of music with notes and rests. The system is enclosed in a large blue bracket on the left side.



Handwritten musical score for the first system. The system consists of three staves. The top staff is in treble clef and contains two measures of music with notes and rests. The middle staff is a grand staff (treble and bass clefs) containing piano accompaniment with chords and arpeggios. The bottom staff is a single bass clef staff with a few notes. A vertical bar line separates the two measures.

Handwritten musical score for the second system. The system consists of three staves. The top staff is in treble clef and contains two measures of music with notes and rests. The middle staff is a grand staff (treble and bass clefs) containing piano accompaniment with chords and arpeggios. The bottom staff is a single bass clef staff with a few notes. A vertical bar line separates the two measures.

Handwritten musical score for the third system. The system consists of three staves. The top staff is in treble clef and contains two measures of music with notes and rests. The middle staff is a grand staff (treble and bass clefs) containing piano accompaniment with chords and arpeggios. The bottom staff is a single bass clef staff with a few notes. A vertical bar line separates the two measures.

Handwritten musical notation for the first system. It consists of a treble clef staff with a 7/4 time signature, and a grand staff with piano and bass staves. The piano part features complex chords and arpeggiated figures. The bass part has a simple bass line with a 'd' note. A large blue bracket spans across the piano and bass staves.

Handwritten musical notation for the second system. It consists of a treble clef staff with a 7/4 time signature, and a grand staff with piano and bass staves. The piano part continues with complex chords and arpeggiated figures. The bass part has a simple bass line with a 'd' note. A large blue bracket spans across the piano and bass staves.

Handwritten musical notation for the third system. It consists of a treble clef staff with a 7/4 time signature, and a grand staff with piano and bass staves. The piano part continues with complex chords and arpeggiated figures. The bass part has a simple bass line with a 'd' note. A large blue bracket spans across the piano and bass staves.



Handwritten musical notation for the first system. It features a treble clef on the top staff. The grand staff includes a piano part (left hand) and an organ part (right hand). The piano part consists of a series of chords and melodic lines, with some notes marked with a tilde (~). The organ part consists of a series of chords, some with a tilde (~) above them. The system is divided into three measures by vertical bar lines.

Handwritten musical notation for the second system. It features a treble clef on the top staff. The grand staff includes a piano part (left hand) and an organ part (right hand). The piano part consists of a series of chords and melodic lines, with some notes marked with a tilde (~). The organ part consists of a series of chords, some with a tilde (~) above them. The system is divided into two measures by vertical bar lines.

Handwritten musical notation for the third system. It features a treble clef on the top staff. The grand staff includes a piano part (left hand) and an organ part (right hand). The piano part consists of a series of chords and melodic lines, with some notes marked with a tilde (~). The organ part consists of a series of chords, some with a tilde (~) above them. The system is divided into two measures by vertical bar lines.

immer breiter werden

Handwritten musical notation for the first system. It features a treble clef on the left. The notation is written on a grand staff with three staves. The top staff contains a melodic line with a triplet of notes at the end. The middle and bottom staves contain piano accompaniment with various chords and notes. The system is enclosed in a large bracket on the left.

Handwritten musical notation for the second system, similar to the first. It features a treble clef on the left. The notation is written on a grand staff with three staves. The top staff contains a melodic line with a triplet of notes at the end. The middle and bottom staves contain piano accompaniment with various chords and notes. The system is enclosed in a large bracket on the left.

Handwritten musical notation for the third system. It features a treble clef on the left. The notation is written on a grand staff with three staves. The top staff contains a melodic line with a triplet of notes at the end. The middle and bottom staves contain piano accompaniment with various chords and notes. The system is enclosed in a large bracket on the left.



Handwritten musical notation for the first system. It consists of a grand staff with three staves. The top staff has a treble clef and a key signature of one sharp (F#). The middle staff contains chords and arpeggiated figures. The bottom staff has a single note.

Orgel. mit .....

Handwritten musical notation for the second system. It follows the same format as the first system, with a treble clef, a key signature of one sharp, and a 4/4 time signature. The middle staff shows different chordal textures.

Handwritten musical notation for the third system. It features a treble clef, a key signature of one flat (Bb), and a 4/4 time signature. The middle staff contains a melodic line with eighth notes.

lange halten!

C  
C  
C

Fine

1942

Adolf  
Scherbaum