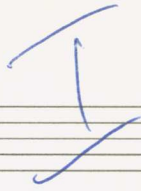


Konzert in 4 Teilen
für
Klavier und
Streich -

Notenheft **kammerorchester**
1972 A-SCH.

Lento



Handwritten musical score for the first system. It consists of a piano part and three string parts. The piano part has a melodic line with a slur and an accent (^) over the first two notes. The strings have rests in the first two measures and then play chords in the third and fourth measures. Chord symbols like #F, bF, and b are written above the strings. There are also some handwritten notes like 'ez' and 'b' near the string parts.

Handwritten musical score for the second system. It consists of a piano part and three string parts. The piano part has a melodic line with a slur and a 'din' marking above it. The strings have rests in the first two measures and then play chords in the third and fourth measures. Chord symbols like b, b, and b are written above the strings. There are also some handwritten notes like 'ez' and 'b' near the string parts.

sehr ruhig (auf 6)

Solo

Handwritten musical notation for the first system, featuring a piano solo section with treble and bass staves. The music includes various notes, rests, and dynamic markings like 'p' and 'f'. There are also some handwritten annotations and slurs.

Handwritten musical notation for the second system, continuing the piano solo with treble and bass staves. It shows further melodic and harmonic development with slurs and dynamic markings.

Handwritten musical notation for the third system, concluding the piano solo with treble and bass staves. It features a final cadence with a circled 'p' and a double bar line.

sehr langsam (auf Holital)

Handwritten musical score for strings and piano. The score is written on six staves. The first two staves are for the piano, and the remaining four are for the strings. The piano part features a melodic line with notes like $\sharp\sharp$, \sharp , \flat , \sharp , \flat , \flat , \flat and \flat , \sharp , \flat , \sharp . The string parts are mostly sustained notes with some movement. Dynamics include pp and pp . There are some markings like \approx and \approx on the piano staff.

Solo piano part. The melody is written on a single staff. It includes notes like $\sharp\sharp$, \sharp , \flat , \sharp , \flat , \flat , \flat and \flat , \sharp , \flat , \sharp . Dynamics include pp and pp . There is a marking "Pedal bis ϕ " and the word "solist" written above the staff.

Handwritten musical score for piano and strings. The piano part is on the top staff, and the string part is on the bottom staff. The piano part has notes like \sharp , \sharp , \flat , \sharp , \flat , \flat and \sharp , \sharp , \flat , \sharp . The string part has notes like \sharp , \sharp , \flat , \sharp , \flat , \flat and \sharp , \sharp , \flat , \sharp . There is a marking "subito pesante \sharp " and a 3/4 time signature.

hvert

1

2

52

52

Handwritten musical notation on a grand staff. The bottom staff contains a melodic line with notes G4, A4, B4, C5, D5, E5, F5, G5. There are dynamic markings 'pp' and 'ppp', and an accent mark '^' above the first note. A large bracket spans the first two notes.

Solo sehr einfach - ruhig
 asb

Handwritten musical notation for a solo section. It shows two staves (treble and bass clef) with notes and chords. The treble staff has notes G4, A4, B4, C5, D5, E5, F5, G5. The bass staff has notes G2, A2, B2, C3, D3, E3, F3, G3. There are dynamic markings 'pp' and 'p'. A large bracket spans the first two measures. The word 'rit...' is written below the second measure.

Handwritten musical notation for a piano section. It shows two staves (treble and bass clef) with notes and chords. The treble staff has notes G4, A4, B4, C5, D5, E5, F5, G5. The bass staff has notes G2, A2, B2, C3, D3, E3, F3, G3. There are dynamic markings 'pp' and 'p'. A large bracket spans the first two measures. The word 'lange?' is written below the second measure.

II

Presto

Solo

3/4 F#

hart

8

8

8

Handwritten musical score for the first system, featuring a piano (pp) part and four string parts (1, 2, 3, 4).

The piano part (top staff) begins with a key signature of three sharps (F#, C#, G#) and a 3/4 time signature. It contains three measures with notes and rests, including a fermata over the first measure. The string parts (1-4) are marked with dynamics like *pp* and *pp* and feature long, sweeping lines across the measures.

Handwritten musical score for the second system, featuring a piano (pp) part and four string parts (1, 2, 3, 4).

The piano part (top staff) continues with three measures, including a fermata over the first measure. The string parts (1-4) are marked with dynamics like *pp* and *pp* and feature long, sweeping lines across the measures.

Handwritten musical score for a piano and string quartet. The score is divided into two systems. The first system has two staves for piano and four staves for strings. The second system has two staves for piano and four staves for strings. The piano part features complex chords and melodic lines, while the string part consists of sustained notes with some dynamics markings like 'f' and 'p'.

Handwritten musical score for piano and strings. The piano part is on the top two staves, and the string part is on the bottom five staves. The score is in G major and 4/4 time. The piano part features a melodic line with slurs and accents, and a bass line with chords and single notes. The string part consists of five staves with various rhythmic patterns and slurs.

1 Solo Violine

2 Solo Violine

pp

Handwritten musical score for two solo violins. The first violin part is on the top staff, and the second violin part is on the bottom staff. Both parts feature melodic lines with slurs and accents. The first violin part starts with a circled 'pp' dynamic marking.

Handwritten musical notation for the first system. It consists of two staves. The upper staff contains complex chord structures with accidentals (sharps and flats) and slurs. The lower staff contains a melodic line with a slur and a fermata. Dynamics include *f* and *f* <.

Handwritten musical notation for the second system. It consists of five staves. The first two staves are marked with *alle*. The system includes a *Coda* symbol. Dynamics include *p* and *p* >. There are also circled numbers 12 and 13.

Handwritten musical notation for the third system. It consists of two staves. The first staff is marked with *Solo*. The system includes a *Dal Solo* marking. Dynamics include *f* and *f* <.

♩ cont

largo

Handwritten musical score for four staves. The first two staves are in treble clef with a key signature of one sharp (F#). The last two staves are in bass clef with a key signature of one sharp (F#). The score is divided into three measures by vertical bar lines. The first measure contains chords and rhythmic markings. The second measure contains chords and rhythmic markings. The third measure contains a melodic line in the bass clef staves and a sharp sign in the treble clef staves. The word "largo" is written above the third measure.

III

lento

Solo

pp

mf

f

Handwritten musical notation for the first system, featuring a treble clef staff with a melodic line and a bass clef staff with a bass line. The treble staff includes dynamic markings like 'ff' and 'f', and articulation marks like accents and slurs. The bass staff includes a key signature change from one sharp to two sharps.

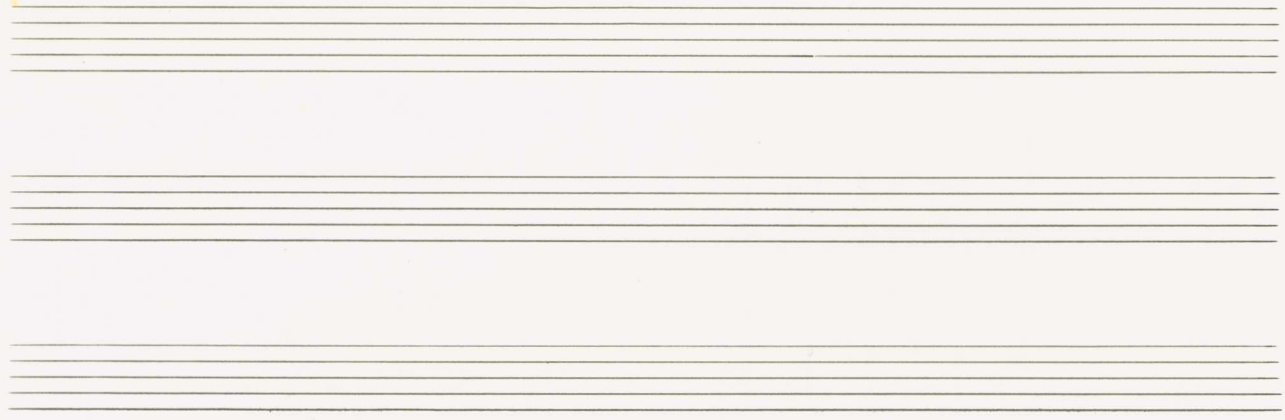
Handwritten musical notation for the second system, labeled "Violin" (1V, 2V) and "Br" (Bassoon). It shows four staves with complex melodic lines, many accidentals, and slurs. The notation is dense and expressive.

Handwritten musical notation for the third system, labeled "Solo" and "p". It features a treble clef staff with a melodic line and a bass clef staff with a bass line. The notation includes a key signature change and a triplet of notes.

Handwritten musical score for piano and strings. The piano part features a melody with notes marked with flats (b) and naturals (♮). The string part consists of block chords with accidentals (sharps and flats) and a wavy line indicating a tremolo or sustained texture. A circled 'ppp' dynamic marking is present in the piano part.

so ruhig als möglich

Handwritten musical score for a chamber orchestra. The score includes parts for Flute (Fl.), Pedal (Pedal), Solo (Solo), and Cello (Cello). Dynamics range from *ppp* to *ff*. The Flute part has notes with accidentals and slurs. The Pedal part has notes with slurs and accents. The Solo part has notes with slurs and accents. The Cello part has notes with slurs and accents. The score is divided into two measures by a vertical bar line.



(2. + großes rit. - - -)

Handwritten musical score for piano and strings. The score is divided into three measures by vertical bar lines. The piano part is on the top two staves, and the string quartet is on the bottom four staves. The piano part includes a treble clef, a key signature of three sharps (F#, C#, G#), and a 4/4 time signature. The first measure has a circled key signature change to one sharp (F#) and a circled time signature change to 3/4. The piano part includes various notes, accidentals (sharps, flats, naturals), and slurs. The string quartet part consists of four staves with notes and slurs. The page is numbered 44 in the piano part and 43 in the string parts.

perante

1 alle #

2 alle #

alle #

ctB alle #

Handwritten musical score for the first system. The right staff is in treble clef and contains a melodic line with notes circled and slurs. The left staff is in bass clef and contains a bass line with slurs and a circled sharp sign. The word "accel." is written above the right staff.

Handwritten musical score for the second system. The right staff continues the melodic line. The left staff continues the bass line. The word "accel." is written below the right staff.

Handwritten musical score for the third system. The right staff features a complex melodic line with many accidentals and slurs. The left staff features a complex bass line with many accidentals and slurs.

Handwritten musical score for the fourth system. The right staff features a complex melodic line with many accidentals and slurs. The left staff features a complex bass line with many accidentals and slurs. The system ends with a double bar line and a fermata.

Konzert (frei) *erweitert*
(viertes)

Presto

Handwritten musical notation for the first system. It consists of two staves. The top staff is in treble clef and the bottom in bass clef. The key signature is three sharps (F#, C#, G#). The time signature is 4/4. The notation includes various rhythmic values, including eighth and sixteenth notes, and rests. There are several accidentals (sharps and naturals) throughout the piece.

Handwritten musical notation for the second system. It consists of two staves. The top staff is in treble clef and the bottom in bass clef. The key signature is three sharps (F#, C#, G#). The time signature is 4/4. The notation includes various rhythmic values, including eighth and sixteenth notes, and rests. There are several accidentals (sharps and naturals) throughout the piece.

Handwritten musical notation for the third system. It consists of two staves. The top staff is in treble clef and the bottom in bass clef. The key signature is three sharps (F#, C#, G#). The time signature is 4/4. The notation includes various rhythmic values, including eighth and sixteenth notes, and rests. There are several accidentals (sharps and naturals) throughout the piece.

Handwritten musical notation for the fourth system. It consists of two staves. The top staff is in treble clef and the bottom in bass clef. The key signature is three sharps (F#, C#, G#). The time signature is 4/4. The notation includes various rhythmic values, including eighth and sixteenth notes, and rests. There are several accidentals (sharps and naturals) throughout the piece.

breit

gute rit... dir

D.C.
al

so ruhig als möglich

IV.

Prestissimo

4/4 *pp* *cresc.*

Handwritten musical notation for the first system. It consists of two staves. The top staff has a treble clef and a 4/4 time signature. The bottom staff has a bass clef. The notation includes a piano (*pp*) dynamic marking and a crescendo (*cresc.*) hairpin. There are several chords and melodic fragments, some with accidentals like flats and sharps.

3/4

Handwritten musical notation for the second system. It consists of two staves. The top staff has a treble clef and a 3/4 time signature. The bottom staff has a bass clef. The notation includes various chords and melodic lines, with some accidentals.

mf = *f*

Handwritten musical notation for the third system. It consists of two staves. The top staff has a treble clef and a 4/4 time signature. The bottom staff has a bass clef. The notation includes a mezzo-forte (*mf*) dynamic marking and a forte (*f*) dynamic marking. There are various chords and melodic lines.

f

Handwritten musical notation for the fourth system. It consists of two staves. The top staff has a treble clef and a 4/4 time signature. The bottom staff has a bass clef. The notation includes a forte (*f*) dynamic marking and various chords and melodic lines, ending with a double bar line.

Handwritten musical notation for the first system. The top staff is in treble clef and contains a circled key signature of two sharps (F# and C#). It features a melodic line with eighth notes and rests, with accents (^) above the notes. The bottom staff is in bass clef and contains chordal accompaniment with notes and rests, also featuring accents (^) above the notes.

Handwritten musical notation for the second system. The top staff continues the melodic line with eighth notes and rests, including a circled key signature of two sharps. The bottom staff continues the chordal accompaniment with notes and rests, including a circled key signature of two sharps.

Handwritten musical notation for the third system. The top staff features a melodic line with eighth notes and rests, including a circled key signature of two sharps. The bottom staff features a more complex rhythmic pattern with notes and rests, including a circled key signature of two sharps.

Handwritten musical notation for the fourth system. The top staff is in treble clef and contains wavy lines representing sustained notes or glissandos. The bottom staff is in bass clef and contains wavy lines representing sustained notes or glissandos. A circled key signature of two sharps is present at the beginning of the system.

Handwritten musical score for the first system. The system consists of five staves. The top staff is a grand staff with treble and bass clefs. Below it are four staves labeled 1, 2, Bn, and C/B. The music is divided into four measures by vertical bar lines. Above the first measure, there is a large upward-pointing triangle and a chord symbol $b \text{ } \begin{matrix} \text{#} \\ \text{f} \end{matrix}$. Above the second measure is a chord symbol $b \text{ } \begin{matrix} \text{#} \\ \text{f} \end{matrix}$. Above the third measure is a chord symbol $b \text{ } \begin{matrix} \text{#} \\ \text{f} \end{matrix}$. Above the fourth measure is a chord symbol $b \text{ } \begin{matrix} \text{#} \\ \text{f} \end{matrix}$. The grand staff contains a melodic line with notes and rests. The string staves (1, 2, Bn, C/B) contain rhythmic patterns and chordal indications, including slurs and dynamic markings like # and p .

Handwritten musical score for the second system. The system consists of five staves. The top staff is a grand staff with treble and bass clefs. Below it are three staves (treble, bass, and another bass clef) and a bottom bass staff. The music is divided into five measures by vertical bar lines. Above the first measure is a chord symbol $\text{#} \text{ } \begin{matrix} \text{#} \\ \text{f} \end{matrix}$. Above the second measure is a chord symbol $b \text{ } \begin{matrix} \text{#} \\ \text{f} \end{matrix}$. Above the third measure is a chord symbol $\text{#} \text{ } \begin{matrix} \text{#} \\ \text{f} \end{matrix}$. Above the fourth measure is a chord symbol $b \text{ } \begin{matrix} \text{#} \\ \text{f} \end{matrix}$. Above the fifth measure is a chord symbol $\text{#} \text{ } \begin{matrix} \text{#} \\ \text{f} \end{matrix}$. The grand staff contains a melodic line with notes and rests. The string staves contain rhythmic patterns and chordal indications, including slurs and dynamic markings like # and p .

81

ppp

ppp

ppp

ppp

ppp

Solo

ppp

Solo

ppp

8/

$\# \# \flat \# \flat \#$

Solo

Solo

8 1

D.C.

#DAG10) oder langsame 6

pp

pp

Solo Bratsche

Solo Bratsche

f

poco rit...

pp

so stark und ruhig als möglich

Solo

Handwritten musical notation for the first system. The piano staff (top) contains complex chords with accidentals (sharps and flats) and a melodic line. The bass staff (bottom) contains a bass line with notes and rests. Dynamics include *pp* and *pp*. A large slur covers the first two measures.

(Paci)

Handwritten musical notation for the second system. The piano staff (top) has a melodic line with a slur and a dynamic marking of *rit*. The bass staff (bottom) has a bass line with notes and rests. Dynamics include *pp* and *lunghe*. A large slur covers the first two measures.

Solo

Handwritten musical notation for the third system. It features four staves: piano (top), two violins (middle), and cello (bottom). The piano staff has a melodic line with a slur and a dynamic marking of *pp*. The violin staves have melodic lines with notes and rests. The cello staff has a bass line with notes and rests. Dynamics include *pp* and *D.C. al Presto*. A large slur covers the first two measures.

pp. rit. --- attacca D.C. Prestissimo al



Handwritten musical score for the first system, consisting of five staves. The top two staves are for the right hand, and the bottom three are for the left hand. The music is in G major (one sharp). The first staff has a treble clef and a key signature of one sharp. The second staff has a bass clef and a key signature of one sharp. The third staff has a treble clef and a key signature of one sharp. The fourth and fifth staves have a treble clef and a key signature of one sharp. The notation includes various rhythmic values, accidentals, and dynamic markings. A circled number '82' is written in the left margin of the fifth staff.

Handwritten musical score for the second system, consisting of six staves. The top two staves are for the right hand, and the bottom four are for the left hand. The music is in G major (one sharp). The first staff has a treble clef and a key signature of one sharp. The second staff has a bass clef and a key signature of one sharp. The third staff has a treble clef and a key signature of one sharp. The fourth and fifth staves have a treble clef and a key signature of one sharp. The sixth staff has a bass clef and a key signature of one sharp. The notation includes various rhythmic values, accidentals, and dynamic markings. A large bracket on the right side of the system groups the bottom four staves. The text 'lange halten' is written in the bottom right corner of the system.