

L.v. BEETHOVEN



W.A. MOZART



# NOTENHEFT

F. SCHUBERT



J. HAYDN



J. STRAUSS



EDITION

Sonate (Jazz) (3 Sätze)

für

Flöte

Piano

Bass

Schlagwerk

1972

A

Mod. assai

Flute

Piano (Orchestra)

Bass

Soli

4/4

(p) = # notes

(p) = p

p

V

Handwritten musical score for the first system. It features a treble clef, a key signature of one sharp (F#), and a 2/4 time signature. The score consists of five staves: a single treble staff, a grand staff (treble and bass clefs), and three additional staves. The music includes various notes, rests, and dynamic markings such as 'p' and 'p' in a circle. The first staff has a melodic line with slurs and accents. The grand staff shows chordal accompaniment. The three lower staves contain rhythmic patterns and rests.

Handwritten musical score for the second system. It features a treble clef, a key signature of one sharp (F#), and a 2/4 time signature. The score consists of five staves: a single treble staff, a grand staff (treble and bass clefs), and three additional staves. The music includes various notes, rests, and dynamic markings. A circled 'A' is written in the top right corner. The first staff has a melodic line with slurs and accents. The grand staff shows chordal accompaniment. The three lower staves contain rhythmic patterns and rests.

Handwritten musical score for the first system. The top staff (treble clef) contains a melodic line with several notes beamed together and some notes marked with an accent (^). The second staff (bass clef) shows chords, including a triad with a sharp sign (#). The bottom staff (piano part) features rhythmic notation with vertical stems and flags, and some numbers below it (1, 2, 2, 1).

Handwritten musical score for the second system. The top staff (treble clef) continues the melodic line with more beamed notes and accents. The second staff (bass clef) shows chords, including one with a sharp sign (#). The bottom staff (piano part) continues with rhythmic notation and vertical stems.

Handwritten musical score for the first system. The top staff is in treble clef with a key signature of two flats (B-flat and E-flat) and a common time signature. It contains a melodic line with various accidentals and slurs. The piano part consists of two staves: the upper staff shows chords with accidentals, and the lower staff shows a bass line with notes and rests.

2

Handwritten musical score for the second system. The top staff is in treble clef with a key signature of two flats and a common time signature. It contains a melodic line with various accidentals and slurs. The piano part consists of two staves: the upper staff shows chords with accidentals, and the lower staff shows a bass line with notes and rests. A circled 'f' is present in the lower left corner of the system.

Handwritten musical score for the first system. It consists of four staves. The top staff is in treble clef and contains a melodic line with several slurs and accents. The three staves below are in bass clef and provide accompaniment with chords and rhythmic patterns. The time signature is 3/4. The system concludes with a double bar line.

3

Handwritten musical score for the second system. It consists of four staves. The top staff is in treble clef and contains a melodic line with slurs and accents. The three staves below are in bass clef and provide accompaniment. A circled '3' is written above the first measure of the top staff, and a circled '4' is written below the first measure of the bottom staff. The system concludes with a double bar line.

Handwritten musical score for the first system. It consists of four measures. The top staff is in treble clef with a key signature of one sharp (F#). The notation includes various chords, melodic lines, and dynamic markings such as accents (^) and slurs. The bottom staves show bass clef notation with notes and rests.

Handwritten musical score for the second system, marked with a circled '4' in the top right corner. It consists of four measures. The top staff is in treble clef with a key signature of one sharp (F#). The notation includes various chords, melodic lines, and dynamic markings such as accents (^) and slurs. The bottom staves show bass clef notation with notes and rests.



Handwritten musical score for the first system, consisting of four staves. The notation includes notes with stems, rests, and bar lines. The first staff has a circled '4' next to it. The second staff contains a whole rest. The third staff has a sequence of notes. The fourth staff has a sequence of notes with stems.

Handwritten musical score for the second system, consisting of four staves. The notation includes notes with stems, rests, and bar lines. The first staff has a sequence of notes. The second staff has a sequence of notes. The third staff has a sequence of notes. The fourth staff has a sequence of notes.

Handwritten musical score for the first system, consisting of five staves. The notation includes various notes, rests, and dynamic markings such as accents (^) and slurs. The first staff has a treble clef and a key signature of one flat. The second staff has a treble clef and a key signature of one flat. The third staff has a bass clef and a key signature of one flat. The fourth staff has a bass clef and a key signature of one flat. The fifth staff has a bass clef and a key signature of one flat. The music is written in a style that suggests a piano or organ setting.

5

Handwritten musical score for the second system, consisting of five staves. The notation includes various notes, rests, and dynamic markings such as accents (^), slurs, and the word "Ped." (Pedal). The first staff has a treble clef and a key signature of one flat. The second staff has a treble clef and a key signature of one flat. The third staff has a bass clef and a key signature of one flat. The fourth staff has a bass clef and a key signature of one flat. The fifth staff has a bass clef and a key signature of one flat. The music is written in a style that suggests a piano or organ setting.

Handwritten musical score for the first system. The top staff (treble clef) contains a melodic line with various accidentals and slurs. The middle staff (bass clef) contains a bass line with notes and rests. The bottom staff (grand staff) is labeled 'Pedal' and contains complex chordal textures with many notes and accidentals. The system is divided into four measures by vertical bar lines.

Handwritten musical score for the second system. The top staff (treble clef) contains a melodic line with various accidentals and slurs. The middle staff (bass clef) contains a bass line with notes and rests. The bottom staff (grand staff) is labeled 'Pedal' and contains complex chordal textures with many notes and accidentals. The system is divided into four measures by vertical bar lines.

Handwritten musical score for the first system. It consists of four staves: guitar (top), piano (second), bass (third), and a fourth staff with rhythmic notation. The guitar staff has a treble clef and a key signature of one sharp (F#). The piano staff has a bass clef and a key signature of one sharp (F#), with a circled 'f' dynamic marking. The bass staff has a bass clef and a key signature of one sharp (F#). The fourth staff contains rhythmic notation with stems and flags. The score is divided into three measures by vertical bar lines. A circled number '6' is at the end of the system.

Handwritten musical score for the second system, continuing the piece. It consists of four staves: guitar (top), piano (second), bass (third), and a fourth staff with rhythmic notation. The guitar staff has a treble clef and a key signature of one sharp (F#). The piano staff has a bass clef and a key signature of one sharp (F#), with a circled 'f' dynamic marking. The bass staff has a bass clef and a key signature of one sharp (F#). The fourth staff contains rhythmic notation with stems and flags. The score is divided into three measures by vertical bar lines. A circled number '6' is at the end of the system.

Handwritten musical score for a multi-instrument ensemble. The score is divided into measures by vertical bar lines. The instruments and parts are:

- Vocal:** Top staff with notes and a circled 'CODA' box at the end.
- Piano:** Second staff with notes and a circled 'Pedal' marking.
- Guitar:** Third staff with various chord diagrams and a circled 'Pedal' marking.
- Bass:** Fourth staff with notes and a circled 'Pedal' marking.
- Drum:** Bottom staff with rhythmic notation and a circled 'Pedal' marking.

Schlagzeug Solo

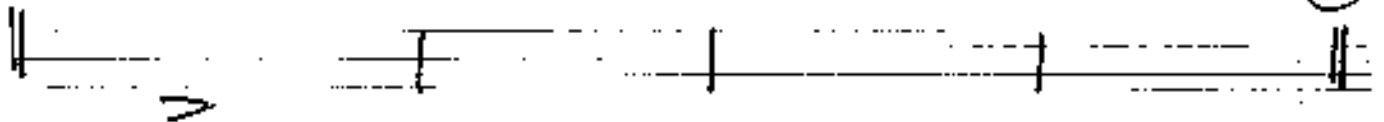
Handwritten musical score for a drum solo. It consists of four staves with rhythmic notation. The word "diun" is written below the second staff.

folgt: 2. <sup>1. u. 2.</sup>



(rit + olün.....)

8



sehr ruhig

9

2x (poco rit)

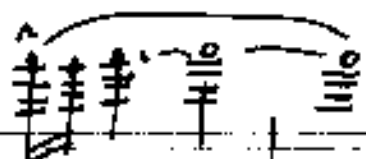
10

Handwritten musical score for the first system, consisting of five staves. The top staff contains a melodic line with notes and rests, marked with *mf*. The second staff shows a bass line with notes and rests, marked with *b* and *8*. The third staff contains a complex melodic line with many notes, marked with *b* and *8*. The fourth and fifth staves show rhythmic patterns with notes and rests, marked with *b* and *8*.

Größ Solo (gang frei)

Handwritten musical score for the second system, consisting of five staves. The top staff contains a melodic line with notes and rests, marked with *mf*. The second staff shows a bass line with notes and rests, marked with *f* and *acc.*. The third staff contains a complex melodic line with many notes, marked with *b* and *8*. The fourth and fifth staves show rhythmic patterns with notes and rests, marked with *b* and *8*. The bottom right of the system includes the text "Tempo 1 Aufnahmestampo", "poco rit", "D.C. Satz 1", and "al f".

⊕ COPB



Composé dur

Ⓟ





Pedal [ ]

2

largo

Handwritten musical score for the first system. It consists of five staves. The top staff is in treble clef with a key signature of one flat (B-flat) and a 4/4 time signature. It contains a melodic line with a circled 'p' dynamic marking and a slur over the first two measures. The second staff is in treble clef with a 4/4 time signature, containing a descending melodic line with a circled 'p' dynamic marking. The third staff is in bass clef with a 4/4 time signature, containing a melodic line with a circled 'p' dynamic marking. The fourth and fifth staves are in bass clef and contain rhythmic accompaniment with a circled 'p' dynamic marking. The system is divided into three measures by vertical bar lines.

Handwritten musical score for the second system. It consists of five staves. The top staff is in treble clef with a key signature of two sharps (F# and C#) and a 4/4 time signature. It contains a melodic line with a circled 'p' dynamic marking and a slur over the first two measures. The second staff is in treble clef with a 4/4 time signature, containing a descending melodic line with a circled 'p' dynamic marking. The third staff is in bass clef with a 4/4 time signature, containing a melodic line with a circled 'p' dynamic marking. The fourth and fifth staves are in bass clef and contain rhythmic accompaniment with a circled 'p' dynamic marking. The system is divided into three measures by vertical bar lines.

Handwritten musical score for the first system. The top staff is a vocal line with lyrics: "2# 2 1 3 3". The key signature is one sharp (F#) and the time signature is 3/4. The second staff is a piano accompaniment with chords and arpeggios. The third and fourth staves are for bass and guitar, with some notes and rests. The music is divided into two measures by a vertical bar line.

Handwritten musical score for the second system. The top staff is a vocal line with lyrics: "Li 1 1 2". The key signature is one sharp (F#) and the time signature is 3/4. The second staff is a piano accompaniment with chords and arpeggios. The third and fourth staves are for bass and guitar, with some notes and rests. The music is divided into two measures by a vertical bar line.

Handwritten musical score, first system. It consists of four staves. The top staff has a circled '1' above it. The music is written in treble clef with a key signature of one sharp (F#) and a common time signature (C). The first staff contains a melodic line with various notes and rests, including a circled '1' above a measure. The second staff contains a melodic line with notes and rests. The third staff contains a melodic line with notes and rests. The fourth staff contains a rhythmic accompaniment with notes and rests. There are dynamic markings such as 'f' and 'p' throughout the system.

Handwritten musical score, second system. It consists of four staves. The music is written in treble clef with a key signature of one sharp (F#) and a common time signature (C). The first staff contains a melodic line with notes and rests, including a circled 'f' below a measure. The second staff contains a melodic line with notes and rests. The third staff contains a melodic line with notes and rests. The fourth staff contains a rhythmic accompaniment with notes and rests. There are dynamic markings such as 'f' and 'p' throughout the system.

9.

diu

diu

2 1 1 1 2      2 1 1 1 2      2 1 1 1 2

2 du

Handwritten musical score for the first system, consisting of four staves. The top staff is in treble clef with a key signature of one sharp (F#) and contains a melodic line with a slur over the first two measures and a circled annotation "p-d" in the third measure. The second staff is in bass clef with a key signature of one sharp (F#) and contains a bass line with a slur over the first two measures. The third staff is in bass clef with a key signature of one sharp (F#) and contains a bass line with a slur over the first two measures. The fourth staff is in bass clef with a key signature of one sharp (F#) and contains a bass line with a slur over the first two measures and a circled "p" dynamic marking. The system is divided into three measures by vertical bar lines.

Handwritten musical score for the second system, consisting of four staves. The top staff is in treble clef with a key signature of one sharp (F#) and contains a melodic line with a slur over the first two measures and a circled "CODA" annotation in the third measure. The second staff is in bass clef with a key signature of one sharp (F#) and contains a bass line with a slur over the first two measures and a circled "p" dynamic marking. The third staff is in bass clef with a key signature of one sharp (F#) and contains a bass line with a slur over the first two measures. The fourth staff is in bass clef with a key signature of one sharp (F#) and contains a bass line with a slur over the first two measures and a circled "3" annotation in the third measure. The system is divided into three measures by vertical bar lines.

Piano

pp

#

#

p

p

4

f

ff

f

f

(And.)

5



(manuliche parolue)

Handwritten musical score for the first system, consisting of five staves. The top staff contains notes with accidentals and dynamic markings:  $b^{\hat{q}}$ ,  $b^{\hat{q}}$ ,  $b^{\hat{q}}$ ,  $q$ ,  $b^{\hat{q}}$ ,  $b^{\hat{q}}$ ,  $b^{\hat{q}}$ ,  $q$ ,  $b^{\hat{q}}$ ,  $q$ ,  $b^{\hat{q}}$ ,  $q$ . The second staff shows a series of notes with stems and beams. The third staff contains notes with stems and beams. The fourth staff shows notes with stems and beams. The fifth staff contains notes with stems and beams. The system is divided into three measures by vertical bar lines.

Handwritten musical score for the second system, consisting of five staves. The top staff contains notes with accidentals and dynamic markings:  $bq$ ,  $bq$ ,  $bq$ ,  $bq$ ,  $bq$ ,  $bq$ ,  $bq$ ,  $bq$ ,  $bq$ ,  $bq$ ,  $bq$ ,  $bq$ . The second staff shows a series of notes with stems and beams. The third staff contains notes with stems and beams. The fourth staff shows notes with stems and beams. The fifth staff contains notes with stems and beams. The system is divided into three measures by vertical bar lines.

(letzten 6 Takte wiederholt / aber immer wieder werden //

(solo breit (pesante))

Handwritten musical score for the first system. It consists of four staves. The top staff is in treble clef with a sharp key signature (F#) and contains a melodic line with many beamed notes and accents. The second staff is in bass clef with a sharp key signature (F#) and contains a bass line with beamed notes and accents. The third staff is empty. The fourth staff is in bass clef with a sharp key signature (F#) and contains rhythmic notation: 7 111 2 1 2 in the first measure and 7 111 2 1 2 in the second measure. A vertical bar line is present between the first and second measures.

Handwritten musical score for the second system. It consists of four staves. The top staff is in treble clef with a flat key signature (Bb) and contains a melodic line with many beamed notes and accents. The second staff is in bass clef with a flat key signature (Bb) and contains a bass line with beamed notes and accents. The third staff is empty. The fourth staff is in bass clef with a flat key signature (Bb) and contains rhythmic notation: 7 111 7 1 2 in the first measure and 7 111 7 1 2 in the second measure. A vertical bar line is present between the first and second measures.

(rit + dim)

6

Handwritten musical score for the first system. It consists of three staves: guitar (top), piano (middle), and guitar (bottom). The guitar part includes chords with accidentals (sharps and flats) and dynamic markings like  $>$  and  $\hat{}$ . The piano part features a melodic line with notes and rests, and dynamic markings  $p$  and  $pp$ . The bottom guitar part has a rhythmic pattern of eighth notes. The system concludes with a double bar line and a fermata.

(rit +  
p.c. =  
CODA

$\text{CODA}$  sempre più rit

Fin

Handwritten musical score for the second system. It consists of three staves: guitar (top), piano (middle), and guitar (bottom). The system begins with a circled  $\text{CODA}$  marking. The guitar part has chords and dynamic markings. The piano part has a melodic line with notes and rests. The bottom guitar part has a rhythmic pattern. The system concludes with a section labeled "Coda" and "Fin" in a circle, with a wavy line indicating the end of the piece.

sehr rasch (Halbe)  $d = \uparrow$  (3)

(1)



Handwritten musical score for the first system. It features a treble clef, a key signature of one flat, and a 3/4 time signature. The score consists of five staves: a single treble staff, a grand staff (treble and bass clefs), and a bass staff. The music is written in a sketchy, handwritten style with various notes, rests, and accidentals. A large slur covers the first two measures of the treble staff. The bass staff contains rhythmic markings '1 2 2 2 2 2'.

Handwritten musical score for the second system. It features a treble clef, a key signature of two sharps, and a 3/4 time signature. The score consists of five staves: a single treble staff, a grand staff (treble and bass clefs), and a bass staff. The music is written in a sketchy, handwritten style with various notes, rests, and accidentals. A large slur covers the first two measures of the treble staff. A circled number '3' is written in the top right corner. The bass staff contains rhythmic markings '2 2 3 3'.

Handwritten musical score for the first system. It features a treble clef, a key signature of one sharp (F#), and a 9/8 time signature. The score consists of four staves. The top staff contains a melodic line with a slur over the first two measures and a fermata over the last measure. The second staff shows chordal accompaniment with a circled 'p' dynamic marking. The third and fourth staves contain rhythmic notation, including a '4=' marking in the third measure.

Handwritten musical score for the second system. It features a treble clef, a key signature of one sharp (F#), and a 9/8 time signature. The score consists of four staves. The top staff contains a melodic line with a slur over the first two measures and a fermata over the last measure. The second staff shows chordal accompaniment with a circled 'p' dynamic marking. The third and fourth staves contain rhythmic notation.

Handwritten musical score for the first system. The top staff (treble clef) contains a melodic line with a slur and accents. The middle staff (bass clef) contains chords and a bass line. The bottom staff (guitar staff) contains a bass line with rhythmic notation.

Handwritten musical score for the second system. The notation continues from the first system, showing a melodic line, chords, and a bass line.



Handwritten musical score for the first system, consisting of five staves. The top staff contains a melodic line with notes and accidentals (flats and naturals) grouped by a slur. The second staff shows chordal structures with notes and stems. The third staff has a single note with a flat and a dynamic marking. The fourth staff contains a rhythmic pattern of notes with stems. The fifth staff shows a rhythmic pattern of notes with stems and dynamic markings.

(4)

Handwritten musical score for the second system, consisting of five staves. The top staff contains a melodic line with notes and accidentals (flats and naturals) grouped by a slur. The second staff shows chordal structures with notes and stems. The third staff has a single note with a flat and a dynamic marking. The fourth staff contains a rhythmic pattern of notes with stems. The fifth staff shows a rhythmic pattern of notes with stems and dynamic markings.

Handwritten musical score for the first system. It features a treble clef, a key signature of one sharp (F#), and a 4/4 time signature. The score consists of five staves. The top staff contains a melodic line with a slur over the first three measures and an accent (^) over the fourth. The second staff shows chords with a slur. The third staff has a single note with an accent (^). The fourth staff contains a rhythmic pattern of quarter notes. The bottom staff shows a bass line with a slur.

Handwritten musical score for the second system. It features a treble clef, a key signature of one sharp (F#), and a 4/4 time signature. The score consists of five staves. The top staff contains a melodic line with a slur over the first two measures and accents (^) over the third, fourth, and fifth. The second staff shows chords with a slur. The third staff has a single note with an accent (^). The fourth staff contains a rhythmic pattern of quarter notes. The bottom staff shows a bass line with a slur.

5

Handwritten musical notation for the first system, consisting of three staves. The top staff has a treble clef and a key signature of one sharp (F#). It contains four measures of music with notes and accents. The middle staff has a bass clef and contains three notes with accents. The bottom staff has a bass clef and contains a sequence of notes.

Handwritten musical notation for the second system, consisting of three staves. The top staff has a treble clef and a key signature of one sharp (F#). It contains four measures of music with notes and accents. The middle staff has a bass clef and contains three notes with accents. The bottom staff has a bass clef and contains a sequence of notes.

Handwritten musical score for the first system, consisting of four measures. The notation includes a treble clef, a bass clef, and a guitar-style bass line. The music is in 4/4 time and features a key signature of one flat. The first measure has a treble clef and a key signature of one flat. The second measure has a bass clef. The third and fourth measures have a treble clef. The bass line is written on a five-line staff with a treble clef and a key signature of one flat. The guitar-style bass line is written on a five-line staff with a treble clef and a key signature of one flat.

6

Handwritten musical score for the second system, consisting of four measures. The notation includes a treble clef, a bass clef, and a guitar-style bass line. The music is in 4/4 time and features a key signature of one flat. The first measure has a treble clef and a key signature of one flat. The second measure has a bass clef. The third and fourth measures have a treble clef. The bass line is written on a five-line staff with a treble clef and a key signature of one flat. The guitar-style bass line is written on a five-line staff with a treble clef and a key signature of one flat.

Handwritten musical score for the first system, featuring a grand staff with treble, alto, and bass clefs. The word "Pedal" is written in the treble clef staff. The notation includes various notes with accents (^) and slurs, and rests in the other staves.

Handwritten musical score for the second system, featuring a grand staff with treble, alto, and bass clefs. The notation includes various notes with accents (^) and slurs, and rests in the other staves.

Handwritten musical score for the first system, consisting of four measures. The notation includes a treble clef, a key signature of one sharp (F#), and a common time signature (C). The first measure contains a melodic line with eighth notes and a bass line with three chords marked with hats (^) and stems. The second and third measures show melodic lines with eighth notes and bass lines with single notes. The fourth measure continues the melodic line with eighth notes and a bass line with a single note. A circled number '4' is written in the right margin.

Handwritten musical score for the second system, consisting of four measures. The notation includes a treble clef, a key signature of one sharp (F#), and a common time signature (C). The first measure contains a melodic line with eighth notes and a bass line with three chords marked with stems and a circled 'III'. The second measure shows a melodic line with a slur and a bass line with a complex chord structure marked with a hat (^) and stems. The third measure contains a melodic line with a slur and a circled 'IV', and a bass line with three chords marked with stems. The fourth measure shows a melodic line with a slur and a circled 'V', and a bass line with three chords marked with stems. A circled number '4' is written in the right margin.

Handwritten musical notation for a guitar piece. The notation is written on a five-line staff with a treble clef. The key signature is one sharp (F#), and the time signature is 4/4. The notation includes a melodic line with eighth notes and a bass line with quarter notes. There are circled accidentals (F#) and a circled number '8'.

8

Handwritten musical notation for a guitar piece. The notation is written on a five-line staff with a treble clef. The key signature is one sharp (F#), and the time signature is 4/4. The notation includes a melodic line with eighth notes and a bass line with quarter notes. There is a circled number '8'.





Handwritten musical score for the first system. It consists of two staves with notes and accidentals, and a bass staff with rhythmic markings. The notes are written in a style that suggests a specific key signature and rhythm. The first staff has notes like  $\sharp 2$ ,  $\sharp 3$ ,  $\flat 4$ ,  $\sharp 4$ , and  $\flat 5$ . The second staff has notes like  $\sharp 2$ ,  $\sharp 3$ ,  $\flat 4$ ,  $\flat 5$ , and  $\flat 6$ . The bass staff has markings like  $\hat{1}$ ,  $\hat{1}$ ,  $\hat{1}$  and  $\flat 1$ ,  $\flat 1$ ,  $\flat 1$ .

Handwritten musical score for the second system. It consists of two staves with notes and accidentals, and a bass staff with rhythmic markings. The notes are written in a style that suggests a specific key signature and rhythm. The first staff has notes like  $\flat 1$ ,  $\flat 2$ ,  $\flat 3$ ,  $\flat 4$ ,  $\flat 5$ ,  $\flat 6$ ,  $\flat 7$ ,  $\flat 8$ ,  $\flat 9$ . The second staff has notes like  $\flat 1$ ,  $\flat 2$ ,  $\flat 3$ ,  $\flat 4$ ,  $\flat 5$ ,  $\flat 6$ ,  $\flat 7$ ,  $\flat 8$ ,  $\flat 9$ . The bass staff has markings like  $\flat 1$ ,  $\flat 1$ ,  $\flat 1$  and  $\flat 1$ ,  $\flat 1$ ,  $\flat 1$ .

Handwritten musical score for the first system, consisting of four staves. The notation includes notes with stems, rests, and dynamic markings such as accents (^) and hairpins (<math>\hat{>}</math>). The first staff has a treble clef, the second a soprano clef, the third an alto clef, and the fourth a bass clef. The music is organized into four measures, with some notes beamed together and some measures containing rests.

20

Handwritten musical score for the second system, consisting of four staves. The notation includes notes with stems, rests, and dynamic markings such as accents (^) and hairpins (<math>\hat{>}</math>). The first staff has a treble clef, the second a soprano clef, the third an alto clef, and the fourth a bass clef. The music is organized into four measures, with some notes beamed together and some measures containing rests.

**p** crescendo

Handwritten musical score for the first system, consisting of five staves. The top staff is a treble clef with notes and slurs. The second staff has notes with slurs and a circled **p** dynamic. The third staff has notes with slurs and a circled **p** dynamic. The fourth staff has notes with slurs and a circled **p** dynamic. The bottom staff is a bass clef with notes and slurs. The music is marked with a crescendo hairpin and various slurs and accents.

**ff**

Handwritten musical score for the second system, consisting of five staves. The top staff is a treble clef with notes and slurs. The second staff has notes with slurs and a circled **ff** dynamic. The third staff has notes with slurs and a circled **ff** dynamic. The fourth staff has notes with slurs and a circled **ff** dynamic. The bottom staff is a bass clef with notes and slurs. The music is marked with a crescendo hairpin and various slurs and accents.

Handwritten musical notation for the first system. It features a treble clef, a key signature of one sharp (F#), and a 4/4 time signature. The notation includes a melodic line with slurs and accents, a guitar-style chord diagram with a bracket, and a bass line with rhythmic notation. The system is divided into three measures by vertical bar lines.

Handwritten musical notation for the second system, similar to the first but with a different melodic line. It includes a circled "12a" in the upper right corner. The notation includes a treble clef, a key signature of one sharp, and a 4/4 time signature.

(letzten 8 Takte normalis) 12b →

1. + 2.

Handwritten musical score for the first system. It consists of a guitar staff and a bass staff. The guitar staff has six measures with rhythmic notation: a quarter note, a quarter note, a quarter note, a quarter note, a quarter note, and a quarter note. The bass staff has six measures with rhythmic notation: a quarter note, a quarter note, a quarter note, a quarter note, a quarter note, and a quarter note. The guitar staff has a 'Solo' marking above the first measure. The bass staff has a 'Solo' marking above the first measure. The guitar staff has a circled '73' at the end of the system.

Handwritten musical score for the second system. It consists of a guitar staff and a bass staff. The guitar staff has six measures with rhythmic notation: a quarter note, a quarter note, a quarter note, a quarter note, a quarter note, and a quarter note. The bass staff has six measures with rhythmic notation: a quarter note, a quarter note, a quarter note, a quarter note, a quarter note, and a quarter note. The guitar staff has a 'Solo' marking above the first measure. The bass staff has a 'Solo' marking above the first measure. The guitar staff has a circled '73' at the end of the system.

(3+||:||)

Handwritten musical score for the first system, measures 1-3. The score is written on a five-line staff with a treble clef, a key signature of one sharp (F#), and a 3/4 time signature. The melody line contains notes with slurs and accents. The bass line contains notes with slurs. The guitar accompaniment line shows chords and fingerings. A circled number '11' is in the top left. A large bracket spans the first three measures.

Handwritten musical score for the second system, measures 4-6. The score is written on a five-line staff with a treble clef, a key signature of one sharp (F#), and a 3/4 time signature. The melody line contains notes with slurs and accents. The bass line contains notes with slurs. The guitar accompaniment line shows chords and fingerings. A circled number '14' is in the top right. A large bracket spans the first three measures.

So rasch wie möglich

Handwritten musical score for guitar, consisting of six staves. The top staff shows chords with accidentals (sharps) and a hat symbol (^). The second staff has notes with accents (^) and slurs. The bottom four staves contain rhythmic slashes and checkmarks, indicating a specific performance technique or timing.

Handwritten musical score for guitar, consisting of six staves. The first staff is numbered 1 through 8. The second staff has notes with accents (^). The third staff has notes with accents (^). The fourth staff has notes with accents (^). The fifth staff has notes with accents (^). The sixth staff has notes with accents (^). A large scribble is on the right side, with the number 1972 circled inside it. The word "Fine" is written at the end of the score.