

Quarte 1975

Klavier

Notenheft

Schubert Adorf

┌ = Pedal

└ = Pedal aus

①

Andantino
(Zusätze $\frac{4}{8}$)

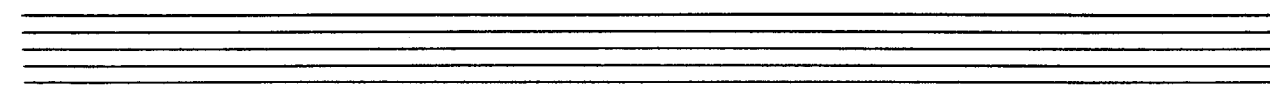
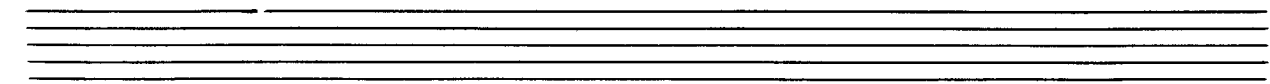
ff

Handwritten musical notation for the first system. The system consists of two staves. The upper staff is in treble clef with a key signature of two sharps (F# and C#). It contains a melodic line starting with a slur and a fermata. The lower staff is in bass clef and contains a chord marked with the number '(4)'.

Handwritten musical notation for the second system. The system consists of two staves. The upper staff is in treble clef with a key signature of two sharps and a 2/8 time signature. It contains a melodic line with slurs. The lower staff is in bass clef and contains a chord.

Handwritten musical notation for the third system. The system consists of two staves. The upper staff is in treble clef with a key signature of two sharps and a 2/8 time signature. It contains a melodic line with slurs. The lower staff is in bass clef and contains chords.

Handwritten musical notation for the fourth system. The system consists of two staves. The upper staff is in treble clef with a key signature of two sharps and a 2/8 time signature. It contains a melodic line with slurs. The lower staff is in bass clef and contains chords.



accel. $\text{r} \text{r} \text{r}$

accel. \rightarrow

brist (Adagio)

Handwritten musical notation on two staves. The top staff contains a circled tempo marking "rit." and several notes with accents. The bottom staff shows a bass line with a sharp sign and a fermata.

Handwritten musical notation on two staves. The top staff is marked "ritto" and features a series of chords. The bottom staff contains notes with accents and a sharp sign.

Handwritten musical notation on two staves. The top staff is marked "lento" and includes a large "4" indicating a 4-measure rest. The bottom staff shows notes with a sharp sign and a fermata.

Handwritten musical notation on two staves. The top staff features notes with a sharp sign and a fermata. The bottom staff shows notes with a sharp sign and a fermata.

Handwritten musical notation for the first system. It consists of two staves. The top staff begins with a treble clef and a circled 'p' dynamic marking. The first measure contains a half note with a sharp sign and a '9' below it. The second measure contains two eighth notes, both with sharp signs and '9' below them, with a slur above and an accent (^) above the first note. The bottom staff contains two measures: the first has a half note with a sharp sign and '9' below it; the second has two eighth notes with sharp signs and '9' below them, with a slur below and a fermata-like symbol below the second note.

Handwritten musical notation for the second system. It consists of two staves. The top staff begins with a treble clef and a circled 'p' dynamic marking. The first measure contains a half note with a sharp sign and '9' below it. The second measure contains two eighth notes with sharp signs and '9' below them, with a slur below and an accent (^) above the first note. The bottom staff contains two measures: the first has a half note with a sharp sign and '9' below it; the second has two eighth notes with sharp signs and '9' below them, with a slur below and an accent (^) above the first note.

Handwritten musical notation for the third system. It consists of two staves. The top staff begins with a treble clef and a circled 'f' dynamic marking. The first measure contains a half note with a sharp sign and '9' below it. The second measure contains two eighth notes with sharp signs and '9' below them, with a slur above and an accent (^) above the first note. The bottom staff contains two measures: the first has a half note with a sharp sign and '9' below it; the second has two eighth notes with sharp signs and '9' below them, with a slur below and an accent (^) above the first note.

esente

Handwritten musical score for the first system of a piano sonata. The score is written on three staves, with the top two staves using treble clefs and the bottom staff using a bass clef. The key signature is one sharp (F#), and the time signature is common time (C). The notation includes notes, rests, and dynamic markings such as 'p' and 'f'. There are also some handwritten annotations and a large bracket on the left side.

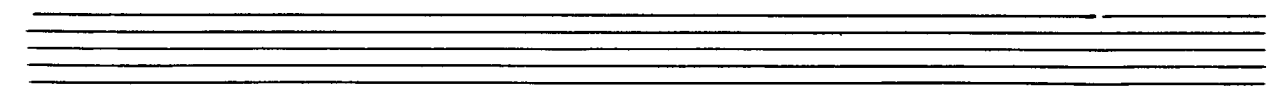
Handwritten musical score for the second system of a piano sonata. The score is written on three staves, with the top two staves using treble clefs and the bottom staff using a bass clef. The key signature is one sharp (F#), and the time signature is common time (C). The notation includes notes, rests, and dynamic markings such as 'p' and 'f'. There are also some handwritten annotations and a large bracket on the left side.

Handwritten musical notation on a grand staff. The top staff contains the circled words "gr. int." and "dim." with a double underline. To the right is a circled "CODA" symbol. The middle two staves show piano accompaniment with notes, accidentals, and dynamics including "pp", "ppp", and "D.C. 1".

Handwritten musical notation on a grand staff. The top staff is marked "Tempo ①" and "sempre cresc.". The middle two staves show piano accompaniment with notes, accidentals, and dynamics including "ppp =".

Handwritten musical notation on a grand staff, continuing the piano accompaniment from the previous system.

Handwritten musical notation on a grand staff, continuing the piano accompaniment from the previous system.



Handwritten musical notation for the first system. The right hand has a melodic line starting with a circled 'P' and a fermata. The left hand has a wavy line with a circled 'P' below it.

Handwritten musical notation for the second system. The right hand has a melodic line starting with 'mf' and a fermata. The left hand has a wavy line with a circled 'P' below it.

Handwritten musical notation for the third system. The right hand has a melodic line starting with a circled 'P' and a fermata. The left hand has a wavy line with a circled 'P' below it.

Handwritten musical notation for the fourth system. The right hand has a melodic line starting with a circled 'P' and a fermata. The left hand has a wavy line with a circled 'P' below it.

Handen — (immer bewegt) →

Handwritten musical notation for the first system. The treble clef has a circled '7#'. The bass clef has a circled '7#'. The notation includes a series of notes in the treble clef, some with slurs, and a series of notes in the bass clef, some with slurs. There are also some handwritten markings like '^^' and '^^' above the notes.

Handwritten musical notation for the second system. The treble clef has a circled '7#'. The bass clef has a circled '7#'. The notation includes a series of notes in the treble clef, some with slurs, and a series of notes in the bass clef, some with slurs. There are also some handwritten markings like '^^' and '^^' above the notes.

Handwritten musical notation for the third system. The treble clef has a circled '7#'. The bass clef has a circled '7#'. The notation includes a series of notes in the treble clef, some with slurs, and a series of notes in the bass clef, some with slurs. There are also some handwritten markings like '^^' and '^^' above the notes.

Two empty musical staves, one for the fourth system and one for the fifth system.

Quel.

Handwritten musical notation for the first system. The upper staff is in treble clef with a key signature of one sharp (F#) and a 9/8 time signature. It features a melodic line with a slur over the first two measures and a series of eighth notes in the following measures. The lower staff is in bass clef with a key signature of one sharp and a 9/8 time signature, containing a bass line with a slur and a series of eighth notes. A fermata is placed over the end of the system.

Handwritten musical notation for the second system. The upper staff is in treble clef with a key signature of one sharp and a 9/8 time signature. It features a melodic line with a slur over the first two measures and a series of eighth notes in the following measures. The lower staff is in bass clef with a key signature of one sharp and a 9/8 time signature, containing a bass line with a slur and a series of eighth notes. A fermata is placed over the end of the system.

Handwritten musical notation for the third system. The upper staff is in treble clef with a key signature of one sharp and a 9/8 time signature. It features a melodic line with a slur over the first two measures and a series of eighth notes in the following measures. The lower staff is in bass clef with a key signature of one sharp and a 9/8 time signature, containing a bass line with a slur and a series of eighth notes. A fermata is placed over the end of the system.

Scherbaum (auf Viertel)

Handwritten musical notation for the first system. It consists of a treble clef and a bass clef. The time signature is 4/4, with a circled '4' in the treble clef. The key signature is one sharp (F#). The treble staff contains a melodic line with eighth notes, and the bass staff contains chords. A circled '4' is written in the treble clef area.

Handwritten musical notation for the second system. It consists of a treble clef and a bass clef. The time signature is 4/4. The key signature is one sharp (F#). The treble staff contains a melodic line with eighth notes, and the bass staff contains chords.

Handwritten musical notation for the third system. It consists of a treble clef and a bass clef. The time signature is 4/4. The key signature is one sharp (F#). The treble staff contains a melodic line with eighth notes, and the bass staff contains chords.

Handwritten musical notation for the fourth system. It consists of a treble clef and a bass clef. The time signature is 4/4. The key signature is one sharp (F#). The treble staff contains a melodic line with eighth notes, and the bass staff contains chords.

accel ...

Handwritten musical notation for the first system. The top staff is in treble clef with a key signature of one sharp (F#) and a common time signature. It contains a melodic line with slurs and some scribbled-out notes. The bottom staff is in bass clef and contains a complex chordal accompaniment with many notes and some scribbles.

Handwritten musical notation for the second system. The top staff continues the melodic line from the first system. The bottom staff continues the complex chordal accompaniment.

Handwritten musical notation for the third system. The top staff continues the melodic line. The bottom staff continues the complex chordal accompaniment.

Handwritten musical notation for the fourth system. The top staff continues the melodic line. The bottom staff continues the complex chordal accompaniment.

Pedal bis &

4 (1)

Handwritten musical notation for the first system. It consists of two staves. The top staff has a treble clef and contains a circled chord with three sharps (F#, C#, G#) and a note on the first line. The bottom staff has a bass clef and contains a chord with two sharps (F#, C#) and a note on the second line. There are various other notes and accidentals scattered across the staves.

Handwritten musical notation for the second system. It consists of two staves. The top staff has a treble clef and contains notes on the first and second lines, with a sharp sign above the second line. The bottom staff has a bass clef and contains notes on the second and third lines, with a sharp sign above the second line.

Handwritten musical notation for the third system. It consists of two staves. The top staff has a treble clef and contains notes on the first and second lines, with a sharp sign above the second line. The bottom staff has a bass clef and contains notes on the second and third lines, with a sharp sign above the second line.

Handwritten musical notation for the fourth system. It consists of two staves. The top staff has a treble clef and contains notes on the first and second lines, with a sharp sign above the second line. The bottom staff has a bass clef and contains notes on the second and third lines, with a sharp sign above the second line.

dim + rit

Handwritten musical notation for the first system, consisting of two staves. The notation includes notes, rests, and dynamic markings such as accents (^) and slurs. The key signature has one flat (B-flat).

Handwritten musical notation for the second system, consisting of two staves. It includes notes, rests, and dynamic markings such as *p* and accents (^). The key signature has two sharps (F# and C#).

Handwritten musical notation for the third system, consisting of two staves. It includes notes, rests, and dynamic markings such as *p*, *pp*, and *ppp*. A *Lento* marking is present in a circle above the staff.

Handwritten musical notation for the fourth system, consisting of two staves. It includes notes, rests, and dynamic markings such as *ppp*. A circled marking *D.C. al* is present on the right side of the system.

CODA

lento

gest. mit folien

Handwritten musical notation for the first system, including a circled *pp* dynamic marking and a circled *8* in the left hand.

Handwritten musical notation for the second system, including a circled *ppp* dynamic marking.

Handwritten musical notation for the third system, including a circled *pppp* dynamic marking and a circled *Fin*.

(2)

lento

pp

f

presente (appassionato)

Handwritten musical notation for the first system. The treble clef has a circled '4' and the bass clef has a circled '8'. The music consists of two measures. The first measure has a treble staff with a quarter note G4, a quarter note A4, and a quarter note B4, followed by a half note chord of C#5 and D#5. The bass staff has a quarter note G3, a quarter note A3, and a quarter note B3, followed by a half note chord of C#4 and D#4. The second measure has a treble staff with a quarter note G4, a quarter note A4, and a quarter note B4, followed by a half note chord of C#5 and D#5. The bass staff has a quarter note G3, a quarter note A3, and a quarter note B3, followed by a half note chord of C#4 and D#4. There are accents and slurs over the notes.

Handwritten musical notation for the second system. The treble staff has a quarter note G4, a quarter note A4, and a quarter note B4, followed by a half note chord of C#5 and D#5. The bass staff has a quarter note G3, a quarter note A3, and a quarter note B3, followed by a half note chord of C#4 and D#4. There are accents and slurs over the notes.

Handwritten musical notation for the third system. The treble staff has a quarter note G4, a quarter note A4, and a quarter note B4, followed by a half note chord of C#5 and D#5. The bass staff has a quarter note G3, a quarter note A3, and a quarter note B3, followed by a half note chord of C#4 and D#4. There are accents and slurs over the notes.

Handwritten musical notation for the fourth system. The treble staff has a quarter note G4, a quarter note A4, and a quarter note B4, followed by a half note chord of C#5 and D#5. The bass staff has a quarter note G3, a quarter note A3, and a quarter note B3, followed by a half note chord of C#4 and D#4. There are accents and slurs over the notes. The system ends with a double bar line.

Tempo ①

Tempo steigern ⇒ cresc. + accel.

Handwritten musical notation for the first system. The treble clef has a key signature of one flat (B-flat) and a common time signature. The melody starts with a quarter note B-flat, followed by a quarter note A, a quarter note G, and a quarter note F. There are slurs and accents over the first three notes. The bass line has a quarter note B-flat, a half note chord (B-flat, D-flat, F), and a quarter note chord (B-flat, D-flat, F).

Handwritten musical notation for the second system. The treble clef has a key signature of one flat. The melody continues with a quarter note E, a quarter note D, and a quarter note C. There are slurs and accents. The bass line has a quarter note B-flat, a half note chord (B-flat, D-flat, F), and a quarter note chord (B-flat, D-flat, F). A circled sharp sign is present in the bass line.

Handwritten musical notation for the third system. The treble clef has a key signature of one flat. The melody continues with a quarter note B-flat, a quarter note A, a quarter note G, and a quarter note F. There are slurs and accents. The bass line has a quarter note B-flat, a half note chord (B-flat, D-flat, F), and a quarter note chord (B-flat, D-flat, F). A circled sharp sign is present in the bass line.

Handwritten musical notation for the fourth system. The treble clef has a key signature of one flat. The melody continues with a quarter note E, a quarter note D, and a quarter note C. There are slurs and accents. The bass line has a quarter note B-flat, a half note chord (B-flat, D-flat, F), and a quarter note chord (B-flat, D-flat, F). The word "poco" is written above the first measure, and "zurück (ist)" is written below it. A circled sharp sign is present in the bass line. The system ends with a double bar line.

perante

ppp

ppp

(rit)

CODA

Tempo ① (Pedal bis ♯)

pp

D.C.

ppp

(sehr düster)

pp

p

(poco rit)

cres. f

Tempo 1

4 p mark

p rit

Tempo 1

pp rit f

sehr ruhig

pp

Crit

pp

pp

CODA

Pedal

Decord

(gr. ruff olun)

Five

Handwritten musical score for the first system. The piano part (top staff) begins with a treble clef, a key signature of one sharp (F#), and a time signature of 4/8. The first measure contains a quarter rest followed by a quarter note F#. The second measure contains a quarter note G# and a quarter note A. The third measure contains a quarter note B and a quarter note C. The bass part (bottom staff) begins with a bass clef and a key signature of one flat (Bb). The first measure contains a quarter note Bb and a quarter note C. The second measure contains a quarter note D and a quarter note E. The third measure contains a quarter note F and a quarter note G. The system concludes with a double bar line and a fermata over the final notes.

Rechts

3

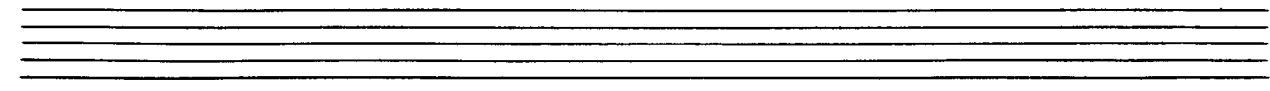
surpse

Handwritten musical score for the second system. The piano part (top staff) begins with a treble clef, a key signature of one flat (Bb), and a time signature of 3/4. The first measure contains a quarter note Bb and a quarter note C. The second measure contains a quarter note D and a quarter note E. The third measure contains a quarter note F and a quarter note G. The bass part (bottom staff) begins with a bass clef and a key signature of one flat (Bb). The first measure contains a quarter note Bb and a quarter note C. The second measure contains a quarter note D and a quarter note E. The third measure contains a quarter note F and a quarter note G. The system concludes with a double bar line and a fermata over the final notes.

Handwritten musical score for the third system. The piano part (top staff) begins with a treble clef, a key signature of one flat (Bb), and a time signature of 3/4. The first measure contains a quarter note Bb and a quarter note C. The second measure contains a quarter note D and a quarter note E. The third measure contains a quarter note F and a quarter note G. The bass part (bottom staff) begins with a bass clef and a key signature of one flat (Bb). The first measure contains a quarter note Bb and a quarter note C. The second measure contains a quarter note D and a quarter note E. The third measure contains a quarter note F and a quarter note G. The system concludes with a double bar line and a fermata over the final notes.

Handwritten musical score for the fourth system. The piano part (top staff) begins with a treble clef, a key signature of one flat (Bb), and a time signature of 3/4. The first measure contains a quarter note Bb and a quarter note C. The second measure contains a quarter note D and a quarter note E. The third measure contains a quarter note F and a quarter note G. The bass part (bottom staff) begins with a bass clef and a key signature of one flat (Bb). The first measure contains a quarter note Bb and a quarter note C. The second measure contains a quarter note D and a quarter note E. The third measure contains a quarter note F and a quarter note G. The system concludes with a double bar line and a fermata over the final notes.

appassionato



Handwritten musical notation in 2/4 time. The right hand (treble clef) contains a melody of quarter notes: D4, E4, F#4, G4, A4, B4, C5, D5. The left hand (bass clef) contains a bass line of quarter notes: G2, F#2, E2, D2, C2, B1, A1, G1. There are two measures of rests in the right hand, indicated by a slash and a dot. The piece ends with a double bar line.

Handwritten musical notation in 3/4 time. The right hand (treble clef) contains a melody of quarter notes: D4, E4, F#4, G4, A4, B4, C5, D5. The left hand (bass clef) contains a bass line of quarter notes: G2, F#2, E2, D2, C2, B1, A1, G1. There are two measures of rests in the right hand, indicated by a slash and a dot. The piece ends with a double bar line.

Handwritten musical notation in 3/4 time. The right hand (treble clef) contains a melody of quarter notes: D4, E4, F#4, G4, A4, B4, C5, D5. The left hand (bass clef) contains a bass line of quarter notes: G2, F#2, E2, D2, C2, B1, A1, G1. There are two measures of rests in the right hand, indicated by a slash and a dot. The piece ends with a double bar line.

Handwritten musical notation in 3/4 time. The right hand (treble clef) contains a melody of quarter notes: D4, E4, F#4, G4, A4, B4, C5, D5. The left hand (bass clef) contains a bass line of quarter notes: G2, F#2, E2, D2, C2, B1, A1, G1. There are two measures of rests in the right hand, indicated by a slash and a dot. The piece ends with a double bar line.

Handwritten musical score for the first system. The top staff is a treble clef with notes and rests. The bottom staff is a bass clef with chords and notes. There are dynamic markings like λ and pp above the staves.

subito (cresce oese.)

Handwritten musical score for the second system. The top staff is a treble clef with a melodic line starting with a circled pp dynamic marking. The bottom staff is a bass clef with accompaniment chords.

Handwritten musical score for the third system. The top staff is a treble clef with a melodic line starting with a circled p dynamic marking. The bottom staff is a bass clef with accompaniment chords.

Handwritten musical score for the fourth system. The top staff is a treble clef with a melodic line starting with a circled mf dynamic marking. The bottom staff is a bass clef with accompaniment chords. The page number 31 is written at the bottom right.

Handwritten musical notation for the first system. The right hand part features a melodic line with slurs and accents, starting with a circled key signature of three sharps (F#, C#, G#) and a 7/8 time signature. The left hand part consists of vertical stems and dots, indicating a bass line.

Handwritten musical notation for the second system, continuing the melodic and bass lines from the first system.

Handwritten musical notation for the third system, showing further development of the melodic and bass lines.

Two empty musical staves at the bottom of the page.

Handwritten musical notation for the first system, featuring a treble clef, a grand staff, and a long slur over the top staff. The notation includes notes with stems and beams, and some notes are shaded with diagonal lines. The bottom staff contains a few notes with a sharp sign and a circled note.

Handwritten musical notation for the second system, similar to the first, with a treble clef, a grand staff, and a long slur. The bottom staff has notes with a sharp sign and a circled note.

Handwritten musical notation for the third system, similar to the first, with a treble clef, a grand staff, and a long slur. The bottom staff has notes with a sharp sign and a circled note.

din

(gut + din)

pp

D.C.

35

Leute

Handwritten musical notation for the first system. The treble clef staff contains a melody with a slur over it, starting with a key signature of one sharp (F#). The dynamic marking is *pp*. The bass clef staff contains chords, including a bass line with a slur.

Handwritten musical notation for the second system, continuing the melody and bass line from the first system.

Handwritten musical notation for the third system. The treble clef staff contains a melody with a slur over it, starting with a key signature of one sharp (F#). The dynamic markings are *p* and *f*. The bass clef staff contains chords, including a bass line with a slur.

Handwritten musical notation for the fourth system. The treble clef staff contains a melody with a slur over it, starting with a key signature of one sharp (F#). The dynamic markings are *p* and *f*. The bass clef staff contains chords, including a bass line with a slur.

perante

Handwritten musical notation for the first system. The treble clef staff begins with a circled key signature of two sharps (F# and C#) and a 4/4 time signature. The music consists of two measures. The first measure contains a half note G4, a quarter note A4, and a quarter note B4. The second measure contains a quarter note C5, a quarter note B4, and a quarter note A4. The bass clef staff contains a series of notes: G3, A3, B3, C4, D4, E4, F4, G4, A4, B4, C5, B4, A4, G4, F4, E4, D4, C4. There are various accents and slurs above the notes.

Handwritten musical notation for the second system. The treble clef staff contains two measures. The first measure has a half note G4, a quarter note A4, and a quarter note B4. The second measure has a quarter note C5, a quarter note B4, and a quarter note A4. The bass clef staff contains a series of notes: G3, A3, B3, C4, D4, E4, F4, G4, A4, B4, C5, B4, A4, G4, F4, E4, D4, C4. There are various accents and slurs above the notes.

Handwritten musical notation for the third system. The treble clef staff contains two measures. The first measure has a half note G4, a quarter note A4, and a quarter note B4. The second measure has a quarter note C5, a quarter note B4, and a quarter note A4. The bass clef staff contains a series of notes: G3, A3, B3, C4, D4, E4, F4, G4, A4, B4, C5, B4, A4, G4, F4, E4, D4, C4. There are various accents and slurs above the notes.

Handwritten musical notation for the fourth system. The treble clef staff contains two measures. The first measure has a half note G4, a quarter note A4, and a quarter note B4. The second measure has a quarter note C5, a quarter note B4, and a quarter note A4. The bass clef staff contains a series of notes: G3, A3, B3, C4, D4, E4, F4, G4, A4, B4, C5, B4, A4, G4, F4, E4, D4, C4. There are various accents and slurs above the notes. A circled word 'rit' is written in the left margin.

ruhig

(frei)

Mysterioso

$\frac{3}{8}$

ppp

ppp

Pedal bis

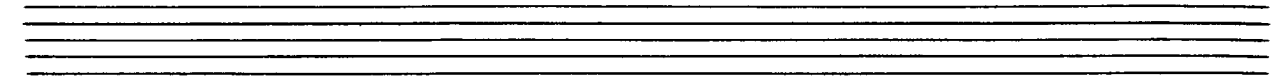
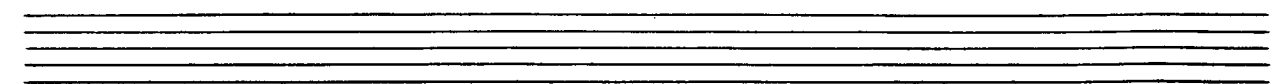
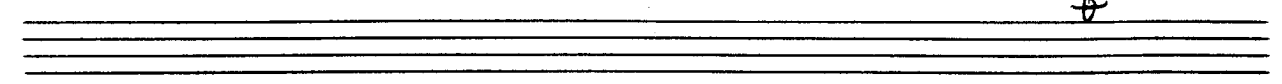
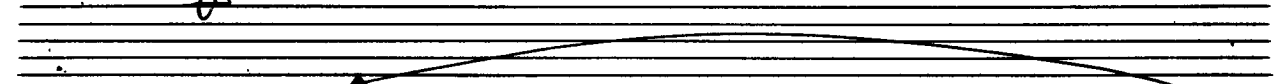
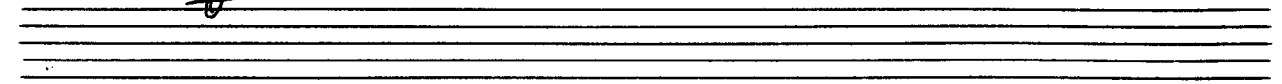
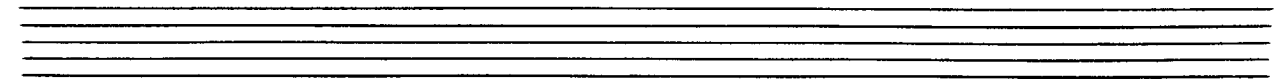
eng Cluster

rit

Tempo Presto

Sempre cres.

ppp



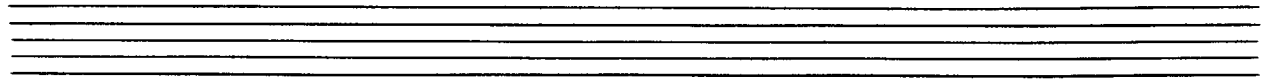
breve (*apparitione*)

Handwritten musical score for the first system. The right hand part features a circled treble clef with three sharps (F#, C#, G#) and a melodic line of eighth notes with a slur and an accent (^) above the first measure. The left hand part has a bass clef with two sharps (F#, C#) and a chordal accompaniment. The system is divided into three measures by vertical bar lines.

Handwritten musical score for the second system. The right hand part continues the melodic line with eighth notes and a slur. The left hand part continues the chordal accompaniment. The system is divided into three measures by vertical bar lines.

Handwritten musical score for the third system. The right hand part features a treble clef with one flat (Bb) and a melodic line of eighth notes with a slur and an accent (^) above the first measure. The left hand part has a bass clef with two flats (Bb, Eb) and a chordal accompaniment. The system is divided into three measures by vertical bar lines.

Handwritten musical score for the fourth system. The right hand part features a treble clef with one flat (Bb) and a melodic line of eighth notes with a slur and an accent (^) above the first measure. The left hand part has a bass clef with two flats (Bb, Eb) and a chordal accompaniment. The system is divided into three measures by vertical bar lines.



Musical notation system 1: Treble clef, key signature of one sharp (F#), time signature 2/4. The right hand contains a melodic line with quarter notes and rests. The left hand contains a bass line with chords and eighth notes.

Musical notation system 2: Treble clef, key signature of one sharp (F#), time signature 3/4. The right hand contains a melodic line with quarter notes and rests. The left hand contains a bass line with chords and eighth notes.

Musical notation system 3: Treble clef, key signature of one sharp (F#), time signature 3/4. The right hand contains a melodic line with quarter notes and rests. The left hand contains a bass line with chords and eighth notes.

Musical notation system 4: Treble clef, key signature of one sharp (F#), time signature 3/4. The right hand contains a melodic line with quarter notes and rests. The left hand contains a bass line with chords and eighth notes.

Handwritten musical score for the first system. The top staff is a treble clef with notes and rests. The bottom staff is a bass clef with chords and a wavy line. There are some scribbles and corrections in the top staff.

Subito pp (cresce cresc.)

Handwritten musical score for the second system. The top staff is a treble clef with notes and rests. The bottom staff is a bass clef with a wavy line. A circled *pp* is written in the left margin.

Handwritten musical score for the third system. The top staff is a treble clef with notes and rests. The bottom staff is a bass clef with a wavy line.

Handwritten musical score for the fourth system. The top staff is a treble clef with notes and rests. The bottom staff is a bass clef with a wavy line. A circled *mf* is written in the left margin.

Handwritten musical notation for the first system. The top staff is a treble clef with a long slur over three measures. The bottom staff is a grand staff with a treble clef. The first measure has a whole note chord with a sharp sign above it. The second measure has a whole note chord with a sharp sign above it. The third measure has a whole note chord with a sharp sign above it. The bottom staff has a whole note chord with a sharp sign above it, a circled sharp sign below it, and a sharp sign above it. The second measure has a whole note chord with a sharp sign above it. The third measure has a whole note chord with a sharp sign above it.

Handwritten musical notation for the second system. The top staff is a treble clef with a long slur over three measures. The bottom staff is a grand staff with a treble clef. The first measure has a whole note chord with a sharp sign above it. The second measure has a whole note chord with a sharp sign above it. The third measure has a whole note chord with a sharp sign above it. The bottom staff has a whole note chord with a sharp sign above it, a sharp sign above it, and a sharp sign above it. The second measure has a whole note chord with a sharp sign above it. The third measure has a whole note chord with a sharp sign above it.

Handwritten musical notation for the third system. The top staff is a treble clef with a long slur over three measures. The bottom staff is a grand staff with a treble clef. The first measure has a whole note chord with a sharp sign above it. The second measure has a whole note chord with a sharp sign above it. The third measure has a whole note chord with a sharp sign above it. The bottom staff has a whole note chord with a sharp sign above it, a sharp sign above it, and a sharp sign above it. The second measure has a whole note chord with a sharp sign above it. The third measure has a whole note chord with a sharp sign above it.

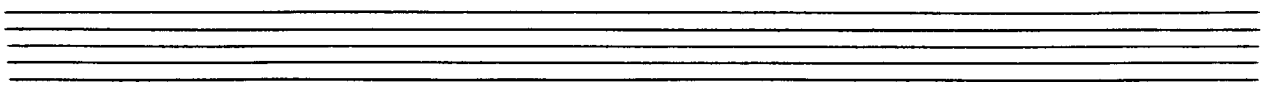
Erbes mit + ohne

Percute

Lento (♩)

düster

(poco rit)



Tempo 1

(p) *zool*

(rit)

so ruhig wie möglich

(pp)

Allegro

Prestissimo
(sempre cresc.)

The image shows four systems of handwritten musical notation for piano. Each system consists of a treble staff and a bass staff. The notation includes notes, rests, slurs, and dynamic markings such as 'p' (piano) and 'f' (forte). There are some scribbles and corrections in the lower staves, particularly in the bass clef. The music appears to be a sonata for piano, with a key signature of one sharp (F#) and a time signature of 4/4.

größer mit

975