

Sonate 1975  
Klavier

Notenheft

Scherbaum Adolf



The page contains ten sets of empty musical staves, each consisting of five horizontal lines. The staves are arranged vertically down the page. There are some faint pink markings on the right side of the page, possibly from a previous page or a stamp.

┌ = Pedal

└ = Pedal aus

①

Moderato  
(Zusätze  $\frac{4}{8}$ )

Handwritten musical notation for the first system. It features a treble clef, a key signature of two sharps (F# and C#), and a time signature of 8/8. The notation includes a melodic line with a slur and a fermata, and a bass line with a chord marked (4).

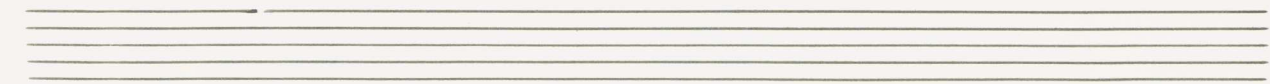
Handwritten musical notation for the second system. It features a treble clef, a key signature of two sharps, and a time signature of 2/8. The notation includes a melodic line with a slur and a fermata, and a bass line with a chord marked #.

Handwritten musical notation for the third system. It features a treble clef and a key signature of two sharps. The notation includes a melodic line with a slur and a fermata, and a bass line with a chord marked #.

Handwritten musical notation for the fourth system. It features a treble clef and a key signature of two sharps. The notation includes a melodic line with a slur and a fermata, and a bass line with a chord marked #.

# e o o e  
#

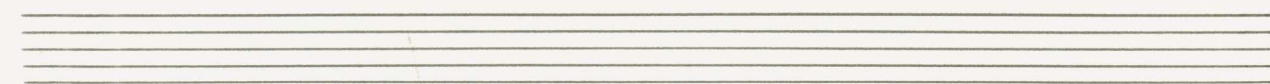
*din*



Handwritten musical notation on two staves. The upper staff contains a melodic line with notes and accidentals (sharps). The lower staff contains a bass line with notes and accidentals. A circled 'f' is written on the left side of the upper staff. A large blue bracket spans across both staves, indicating a phrase. There are also some red markings on the right side of the page.

Handwritten musical notation on two staves. The upper staff has notes with accidentals and a circled 'f'. The lower staff has notes with accidentals. A large blue bracket spans across both staves. There are some red markings on the right side of the page.

Handwritten musical notation on two staves. The upper staff features chords with accidentals and a circled 'f'. The lower staff has notes with accidentals. A large blue bracket spans across both staves. There are some red markings on the right side of the page.



Handwritten musical notation on two staves. The upper staff has notes with accidentals and a circled '2/8'. The lower staff has notes with accidentals. A large blue bracket spans across both staves. There are some red markings on the right side of the page.

And.

And. l. →

And. (Adagio)

Handwritten musical notation on two staves. The top staff contains a melodic line with notes and accidentals, and the bottom staff contains a bass line with notes and accidentals. A circled word "rit" is written above the top staff.

Handwritten musical notation on two staves. The top staff contains a melodic line with notes and accidentals, and the bottom staff contains a bass line with notes and accidentals. A circled word "rit" is written above the top staff.

Handwritten musical notation on two staves. The top staff contains a melodic line with notes and accidentals, and the bottom staff contains a bass line with notes and accidentals. The word "lento" is written above the top staff. The number "4" is written in pink on the left side of the top staff, and the number "8" is written in pink on the left side of the bottom staff.

Handwritten musical notation on two staves. The top staff contains a melodic line with notes and accidentals, and the bottom staff contains a bass line with notes and accidentals.



Handwritten musical notation on a grand staff. The left hand part starts with a circled 'p' and a double bar line. The right hand part has a circled 'p' and a double bar line. The notation includes notes with accidentals and dynamic markings.

Handwritten musical notation on a grand staff. The left hand part starts with a circled 'p' and a double bar line. The right hand part has a circled 'p' and a double bar line. The notation includes notes with accidentals and dynamic markings.

Handwritten musical notation on a grand staff. The left hand part starts with a circled 'p' and a double bar line. The right hand part has a circled 'p' and a double bar line. The notation includes notes with accidentals and dynamic markings.

Presente

Handwritten musical score for the first system of 'Presente'. It features four staves with treble clefs and a common time signature (C). The first two staves are grouped by a purple brace on the left. The notation includes various notes, rests, and accidentals (sharps and flats). There are blue L-shaped markings below the staves, indicating phrasing or breath marks. A vertical blue line is drawn between the second and third staves. The word 'Presente' is written in blue ink above the first staff.

Handwritten musical score for the second system of 'Presente'. It features four staves with treble clefs and a common time signature (C). The first two staves are grouped by a purple brace on the left. The notation includes various notes, rests, and accidentals (sharps and flats). There are blue L-shaped markings below the staves, indicating phrasing or breath marks. A vertical blue line is drawn between the second and third staves.

gr. rit (dün)  $\phi$  CODA

Tempo ①

*sempre cresc.*

Handwritten musical notation for the first system. The treble clef staff contains a sequence of notes:  $b^{\flat}$ ,  $a^{\flat}$ ,  $g^{\flat}$ ,  $f^{\flat}$ ,  $e^{\flat}$ ,  $d^{\flat}$ ,  $c^{\flat}$ ,  $b^{\flat}$ ,  $a^{\flat}$ ,  $g^{\flat}$ ,  $f^{\flat}$ ,  $e^{\flat}$ ,  $d^{\flat}$ ,  $c^{\flat}$ ,  $b^{\flat}$ ,  $a^{\flat}$ ,  $g^{\flat}$ ,  $f^{\flat}$ ,  $e^{\flat}$ ,  $d^{\flat}$ ,  $c^{\flat}$ . A circled 'p' is written below the first few notes. The bass clef staff contains a wavy line with a circled 'p' below it. A vertical bar line is present after the 10th note in the treble staff.

Handwritten musical notation for the second system. The treble clef staff contains notes:  $b^{\flat}$ ,  $a^{\flat}$ ,  $g^{\flat}$ ,  $f^{\flat}$ ,  $e^{\flat}$ ,  $d^{\flat}$ ,  $c^{\flat}$ ,  $b^{\flat}$ ,  $a^{\flat}$ ,  $g^{\flat}$ ,  $f^{\flat}$ ,  $e^{\flat}$ ,  $d^{\flat}$ ,  $c^{\flat}$ ,  $b^{\flat}$ ,  $a^{\flat}$ ,  $g^{\flat}$ ,  $f^{\flat}$ ,  $e^{\flat}$ ,  $d^{\flat}$ ,  $c^{\flat}$ . A circled 'mf' is written below the first few notes. The bass clef staff contains notes:  $b^{\flat}$ ,  $a^{\flat}$ ,  $g^{\flat}$ ,  $f^{\flat}$ ,  $e^{\flat}$ ,  $d^{\flat}$ ,  $c^{\flat}$ ,  $b^{\flat}$ ,  $a^{\flat}$ ,  $g^{\flat}$ ,  $f^{\flat}$ ,  $e^{\flat}$ ,  $d^{\flat}$ ,  $c^{\flat}$ ,  $b^{\flat}$ ,  $a^{\flat}$ ,  $g^{\flat}$ ,  $f^{\flat}$ ,  $e^{\flat}$ ,  $d^{\flat}$ ,  $c^{\flat}$ . A vertical bar line is present after the 10th note in the treble staff.

Handwritten musical notation for the third system. The treble clef staff contains notes:  $b^{\flat}$ ,  $a^{\flat}$ ,  $g^{\flat}$ ,  $f^{\flat}$ ,  $e^{\flat}$ ,  $d^{\flat}$ ,  $c^{\flat}$ ,  $b^{\flat}$ ,  $a^{\flat}$ ,  $g^{\flat}$ ,  $f^{\flat}$ ,  $e^{\flat}$ ,  $d^{\flat}$ ,  $c^{\flat}$ ,  $b^{\flat}$ ,  $a^{\flat}$ ,  $g^{\flat}$ ,  $f^{\flat}$ ,  $e^{\flat}$ ,  $d^{\flat}$ ,  $c^{\flat}$ . A circled 'mf' is written below the first few notes. The bass clef staff contains notes:  $b^{\flat}$ ,  $a^{\flat}$ ,  $g^{\flat}$ ,  $f^{\flat}$ ,  $e^{\flat}$ ,  $d^{\flat}$ ,  $c^{\flat}$ ,  $b^{\flat}$ ,  $a^{\flat}$ ,  $g^{\flat}$ ,  $f^{\flat}$ ,  $e^{\flat}$ ,  $d^{\flat}$ ,  $c^{\flat}$ ,  $b^{\flat}$ ,  $a^{\flat}$ ,  $g^{\flat}$ ,  $f^{\flat}$ ,  $e^{\flat}$ ,  $d^{\flat}$ ,  $c^{\flat}$ . A vertical bar line is present after the 10th note in the treble staff.

Handwritten musical notation for the fourth system. The treble clef staff contains notes:  $b^{\flat}$ ,  $a^{\flat}$ ,  $g^{\flat}$ ,  $f^{\flat}$ ,  $e^{\flat}$ ,  $d^{\flat}$ ,  $c^{\flat}$ ,  $b^{\flat}$ ,  $a^{\flat}$ ,  $g^{\flat}$ ,  $f^{\flat}$ ,  $e^{\flat}$ ,  $d^{\flat}$ ,  $c^{\flat}$ ,  $b^{\flat}$ ,  $a^{\flat}$ ,  $g^{\flat}$ ,  $f^{\flat}$ ,  $e^{\flat}$ ,  $d^{\flat}$ ,  $c^{\flat}$ . A circled 'f' is written below the first few notes. The bass clef staff contains notes:  $b^{\flat}$ ,  $a^{\flat}$ ,  $g^{\flat}$ ,  $f^{\flat}$ ,  $e^{\flat}$ ,  $d^{\flat}$ ,  $c^{\flat}$ ,  $b^{\flat}$ ,  $a^{\flat}$ ,  $g^{\flat}$ ,  $f^{\flat}$ ,  $e^{\flat}$ ,  $d^{\flat}$ ,  $c^{\flat}$ ,  $b^{\flat}$ ,  $a^{\flat}$ ,  $g^{\flat}$ ,  $f^{\flat}$ ,  $e^{\flat}$ ,  $d^{\flat}$ ,  $c^{\flat}$ . A circled 'f' is written below the first few notes. A vertical bar line is present after the 10th note in the treble staff.

Handen — (immer ereignet) →

Handwritten musical notation for the first system. The treble clef has a circled '74' next to it. The bass clef has a '5' next to it. The notation includes a series of notes in the treble clef, some with slurs, and a series of notes in the bass clef, some with slurs. There are also some wavy lines above the bass clef notes.

Handwritten musical notation for the second system. The treble clef has a circled '74' next to it. The bass clef has a '5' next to it. The notation includes a series of notes in the treble clef, some with slurs, and a series of notes in the bass clef, some with slurs. There are also some wavy lines above the bass clef notes.

Handwritten musical notation for the third system. The treble clef has a circled '74' next to it. The bass clef has a '5' next to it. The notation includes a series of notes in the treble clef, some with slurs, and a series of notes in the bass clef, some with slurs. There are also some wavy lines above the bass clef notes.

Four empty musical staves at the bottom of the page.

Quel.

Handwritten musical notation for the first system. The top staff is in treble clef with a key signature of one sharp (F#) and a 9/8 time signature. It contains a series of chords and a melodic line. The bottom staff is in bass clef with a key signature of one sharp and a 9/8 time signature, featuring a bass line with a fermata and a final chord. A large bracket spans across both staves.

Handwritten musical notation for the second system. The top staff is in treble clef with a key signature of one sharp and a 9/8 time signature. It contains a series of chords and a melodic line. The bottom staff is in bass clef with a key signature of one sharp and a 9/8 time signature, featuring a bass line with a fermata and a final chord. A large bracket spans across both staves.

Handwritten musical notation for the third system. The top staff is in treble clef with a key signature of one sharp and a 9/8 time signature. It contains a series of chords and a melodic line. The bottom staff is in bass clef with a key signature of one sharp and a 9/8 time signature, featuring a bass line with a fermata and a final chord. A large bracket spans across both staves.

Scherbaum (auf Viertel)

Handwritten musical notation for the first system. It consists of two staves. The top staff is in treble clef and contains a series of chords and eighth notes. The bottom staff is in bass clef and contains a series of chords. A large blue bracket spans across both staves. There are two '4' symbols in pink, one in a circle with a sharp sign, and a circled sharp sign. Chords are marked with # and 0 symbols.

Handwritten musical notation for the second system. It consists of two staves. The top staff is in treble clef and contains a series of chords and eighth notes. The bottom staff is in bass clef and contains a series of chords. A large blue bracket spans across both staves. Chords are marked with # and 0 symbols.

Handwritten musical notation for the third system. It consists of two staves. The top staff is in treble clef and contains a series of chords and eighth notes. The bottom staff is in bass clef and contains a series of chords. A large blue bracket spans across both staves. Chords are marked with # and 0 symbols.

Handwritten musical notation for the fourth system. It consists of two staves. The top staff is in treble clef and contains a series of chords and eighth notes. The bottom staff is in bass clef and contains a series of chords. A large blue bracket spans across both staves. Chords are marked with # and 0 symbols.

accel ...

Pedal bis  $\phi$



bert (♩)

Handwritten musical notation for the first system. It consists of two staves. The left staff has a treble clef and a circled '1111' next to it. The right staff has a bass clef. Both staves contain notes with accidentals (sharps and flats) and a circled '1111' next to the first measure. There are also some scribbles in pink and purple.

Handwritten musical notation for the second system. It consists of two staves. The left staff has a treble clef and the right staff has a bass clef. Both staves contain notes with accidentals (sharps and flats) and a circled '1111' next to the first measure. There are also some scribbles in pink and purple.

Handwritten musical notation for the third system. It consists of two staves. The left staff has a treble clef and the right staff has a bass clef. Both staves contain notes with accidentals (sharps and flats) and a circled '1111' next to the first measure. There are also some scribbles in pink and purple.

Handwritten musical notation for the fourth system. It consists of two staves. The left staff has a treble clef and the right staff has a bass clef. Both staves contain notes with accidentals (sharps and flats) and a circled '1111' next to the first measure. There are also some scribbles in pink and purple.

dim + rit

Handwritten musical notation for the first system, consisting of two staves. The notation includes notes with accidentals (flats and naturals), slurs, and dynamic markings such as 'p' and 'pp'. There are also some handwritten annotations in purple ink, including a large '8' on the left side of the staves.

Handwritten musical notation for the second system, consisting of two staves. The notation includes notes with accidentals (sharps and naturals), slurs, and dynamic markings such as 'p'. There are also some handwritten annotations in purple ink, including a circled 'p' and a circled note.

Handwritten musical notation for the third system, consisting of two staves. The notation includes notes with accidentals (sharps and naturals), slurs, and dynamic markings such as 'pp' and 'ppp'. There are also some handwritten annotations in purple ink, including a circled 'p' and a circled note.

Handwritten musical notation for the fourth system, consisting of two staves. The notation includes notes with accidentals (sharps and naturals), slurs, and dynamic markings such as 'ppp'. There are also some handwritten annotations in purple ink, including a circled 'p' and a circled note.

D. G. al  
 $\phi$

**CODA**

lento

gest. mit folie

Handwritten musical notation for the first system. It features a grand staff with a treble clef and a bass clef. The treble staff contains a half note chord with a sharp sign and a quarter note. The bass staff contains a half note chord with a sharp sign and a quarter note. There are several slurs and markings in the bass staff, including a circled 'pp' and a large '8' written vertically. A red '8' is also visible on the right side of the staff.

Handwritten musical notation for the second system. It features a grand staff with a treble clef and a bass clef. The treble staff contains a half note chord with two sharp signs and a quarter note. The bass staff contains a half note chord with two sharp signs and a quarter note. There are several slurs and markings in the bass staff, including a circled 'ppp' and a large 'x' written vertically.

Handwritten musical notation for the third system. It features a grand staff with a treble clef and a bass clef. The treble staff contains a half note chord with two sharp signs and a quarter note. The bass staff contains a half note chord with two sharp signs and a quarter note. There are several slurs and markings in the bass staff, including a circled 'pppp' and a large 'F' written vertically.

(2)

lento

pp

pesante (appassionato)

Handwritten musical notation for the first system. The treble clef has a circled key signature of two sharps (F# and C#). The time signature is 4/8. The notation includes a melodic line with slurs and accents, and a bass line with a sequence of notes marked with accents.

Handwritten musical notation for the second system, continuing the melodic and bass lines from the first system.

Handwritten musical notation for the third system, showing further development of the musical themes.

Handwritten musical notation for the fourth system, concluding the piece with a double bar line and a key signature change to two sharps.

Tempo ①

Tempo steigern → cresc. + accel.

Handwritten musical notation for the first system. The treble clef part shows a key signature of two flats (B-flat and E-flat) and a common time signature. It features a series of chords with slurs and accents. The bass clef part shows a single note.

Handwritten musical notation for the second system. The treble clef part shows a key signature of one flat (B-flat) and a common time signature. It features a series of chords with slurs and accents. The bass clef part shows a single note.

Handwritten musical notation for the third system. The treble clef part shows a key signature of one flat (B-flat) and a common time signature. It features a series of chords with slurs and accents. The bass clef part shows a single note.

Handwritten musical notation for the fourth system. The treble clef part shows a key signature of one sharp (F-sharp) and a common time signature. It features a series of chords with slurs and accents. The bass clef part shows a single note. The word "zurück (rit)" is written above the first measure.

perante

ppp

ppp

(rit)

CODA

Tempo ① (Pedal bis  $\phi$ )

pp



D.C.

Handwritten musical notation for the first system, featuring a grand staff with blue ink. The notation includes a treble clef, a key signature of one sharp (F#), and a time signature of 4/4. The music is marked *ppp* and contains several chords and melodic lines. A large purple bracket on the right side of the system indicates a section. The word "D.C." is circled in purple at the top right.

*sehr düster*

Handwritten musical notation for the second system, featuring a grand staff with blue ink. The notation includes a treble clef, a key signature of one sharp (F#), and a time signature of 4/4. The music is marked *pp* and contains several chords and melodic lines. A large purple bracket on the left side of the system indicates a section.

Handwritten musical notation for the third system, featuring a grand staff with blue ink. The notation includes a treble clef, a key signature of one flat (Bb), and a time signature of 4/4. The music is marked *p* and contains several chords and melodic lines. A large purple bracket on the left side of the system indicates a section.

*(poco rit)*

Handwritten musical notation for the fourth system, featuring a grand staff with blue ink. The notation includes a treble clef, a key signature of one sharp (F#), and a time signature of 4/4. The music is marked *cres.* and *f*, and contains several chords and melodic lines. A large purple bracket on the right side of the system indicates a section.

Tempo 1

Handwritten musical notation for the first system. The right hand (RH) has a treble clef and a 4/8 time signature. The left hand (LH) has a bass clef and an 8/8 time signature. The music is in G major. The RH part consists of a melodic line with a slur over the first two measures. The LH part consists of a bass line with a slur over the first two measures. There are some handwritten annotations in pink and blue.

Handwritten musical notation for the second system. The RH has a treble clef and the LH has a bass clef. The music is in G major. The RH part has a melodic line with a slur. The LH part has a bass line with a slur. There is a handwritten annotation "> (rit)" above the LH part in the second measure. There is a pink bracket under the LH part in the second measure.

Handwritten musical notation for the third system. The RH has a treble clef and the LH has a bass clef. The music is in G major. The RH part has a melodic line with a slur. The LH part has a bass line with a slur. There is a handwritten annotation "Tempo 1" above the RH part. There is a handwritten annotation "(rit)" above the LH part. There is a handwritten annotation "pp" in a circle below the RH part. There is a handwritten annotation "f" above the LH part. There are some handwritten annotations in pink and blue.

*sehr ruhig*

*Crit*

*pp*

*D. C. al*

*CODA*

*Pedal*

**Cello**

(cres. tutt/dim)

**Fine**

Handwritten musical score for Cello. The score is in 4/8 time and consists of three measures. The first measure contains a whole note chord with a sharp sign and a note. The second measure contains a half note chord with a sharp sign and a note. The third measure contains a half note chord with a sharp sign and a note. The score is marked with a dynamic of *pp* and a crescendo hairpin. The word "Cello" is written at the bottom right of the score.

**Arco**

**3**

*surpse*

*cresc.*

Handwritten musical score for Arco. The score is in 3/4 time and consists of three measures. The first measure contains a half note chord with a sharp sign and a note. The second measure contains a half note chord with a sharp sign and a note. The third measure contains a half note chord with a sharp sign and a note. The score is marked with a dynamic of *pp* and a crescendo hairpin. The word "Arco" is written at the top left of the score.

Handwritten musical score for Arco. The score is in 3/4 time and consists of three measures. The first measure contains a half note chord with a sharp sign and a note. The second measure contains a half note chord with a sharp sign and a note. The third measure contains a half note chord with a sharp sign and a note. The score is marked with a dynamic of *p*.

Handwritten musical score for Arco. The score is in 3/4 time and consists of three measures. The first measure contains a half note chord with a sharp sign and a note. The second measure contains a half note chord with a sharp sign and a note. The third measure contains a half note chord with a sharp sign and a note. The score is marked with a dynamic of *f*.



appassionato

Handwritten musical notation for the first system. The top staff is in treble clef with a circled key signature of three sharps (F#, C#, G#). The bottom staff is in bass clef with a key signature of two sharps (F#, C#). The music consists of three measures with a slur over the top staff and a fermata over the bottom staff. The notes in the top staff are quarter notes, and the bottom staff contains chords.

Handwritten musical notation for the second system. The top staff is in treble clef with a circled key signature of three sharps (F#, C#, G#). The bottom staff is in bass clef with a key signature of two sharps (F#, C#). The music consists of three measures with a slur over the top staff and a fermata over the bottom staff. The notes in the top staff are quarter notes, and the bottom staff contains chords.

Handwritten musical notation for the third system. The top staff is in treble clef with a circled key signature of two sharps (F#, C#). The bottom staff is in bass clef with a key signature of two flats (Bb, Eb). The music consists of three measures with a slur over the top staff and a fermata over the bottom staff. The notes in the top staff are quarter notes, and the bottom staff contains chords.

Handwritten musical notation for the fourth system. The top staff is in treble clef with a circled key signature of two flats (Bb, Eb). The bottom staff is in bass clef with a key signature of two flats (Bb, Eb). The music consists of three measures with a slur over the top staff and a fermata over the bottom staff. The notes in the top staff are quarter notes, and the bottom staff contains chords.



Handwritten musical notation in 2/4 time. The treble clef staff contains a melody of quarter notes: D4, E4, F4, G4, A4, B4, C5, D5. The bass clef staff contains a bass line with chords: D4, F4, A4; D4, F4, A4, C5; D4, F4, A4, C5; D4, F4, A4, C5. A pink '2' and '4' are written in the upper left. Brackets group the first two measures of the bass line.

Handwritten musical notation in 3/4 time. The treble clef staff contains a melody of quarter notes: D4, E4, F4, G4, A4, B4, C5, D5. The bass clef staff contains a bass line with chords: D4, F4, A4; D4, F4, A4, C5; D4, F4, A4, C5; D4, F4, A4, C5. A pink '3' and '4' are written in the upper left. Brackets group the first two measures of the bass line.

Handwritten musical notation in 3/4 time. The treble clef staff contains a melody of quarter notes: D4, E4, F4, G4, A4, B4, C5, D5. The bass clef staff contains a bass line with chords: D4, F4, A4; D4, F4, A4, C5; D4, F4, A4, C5; D4, F4, A4, C5. A pink '3' and '4' are written in the upper left. Brackets group the first two measures of the bass line.

Handwritten musical notation in 3/4 time. The treble clef staff contains a melody of quarter notes: D4, E4, F4, G4, A4, B4, C5, D5. The bass clef staff contains a bass line with chords: D4, F4, A4; D4, F4, A4, C5; D4, F4, A4, C5; D4, F4, A4, C5. A pink '3' and '4' are written in the upper left. Brackets group the first two measures of the bass line.

Handwritten musical notation for the first system. The top staff is in treble clef and contains two measures of chords:  $\sharp d$  and  $\sharp o$ . The bottom staff is in bass clef and contains arpeggiated figures corresponding to the chords above. There are accents (^) above the first two measures and above the final two measures. A pink circle is drawn around the final measure of the top staff.

*subito (cresce cose.)*

Handwritten musical notation for the second system. The top staff is in treble clef and features a melodic line starting with a  $pp$  dynamic marking. The bottom staff is in bass clef and contains arpeggiated accompaniment. A pink circle is drawn around the first measure of the top staff.

Handwritten musical notation for the third system. The top staff is in treble clef and features a melodic line starting with a  $p$  dynamic marking. The bottom staff is in bass clef and contains arpeggiated accompaniment. A pink circle is drawn around the first measure of the top staff.

Handwritten musical notation for the fourth system. The top staff is in treble clef and features a melodic line starting with an  $mf$  dynamic marking. The bottom staff is in bass clef and contains arpeggiated accompaniment. A pink circle is drawn around the first measure of the top staff.



Handwritten musical notation for the first system. The upper staff is in treble clef with a circled 'F' and a dynamic marking. It contains a melodic line with a slur over the first two measures and a fermata in the third. The lower staff is in bass clef with a circled 'F' and contains a bass line with chords and a fermata in the third measure.

Handwritten musical notation for the second system. The upper staff is in treble clef with a circled 'F' and a dynamic marking. It contains a melodic line with a slur over the first two measures and a fermata in the third. The lower staff is in bass clef with a circled 'F' and contains a bass line with chords and a fermata in the third measure.

Handwritten musical notation for the third system. The upper staff is in treble clef with a circled 'F' and a dynamic marking. It contains a melodic line with a slur over the first two measures and a fermata in the third. The lower staff is in bass clef with a circled 'F' and contains a bass line with chords and a fermata in the third measure.

Handwritten musical notation for the fourth system. The upper staff is in treble clef with a circled 'F' and a dynamic marking. It contains a melodic line with a slur over the first two measures and a fermata in the third. The lower staff is in bass clef with a circled 'F' and contains a bass line with chords and a fermata in the third measure. The system ends with a double bar line and a pink highlight.

Handwritten musical notation for the first system. The top staff is in treble clef with a key signature of one sharp (F#). It contains two measures of music with eighth notes and slurs. The bottom staff is in bass clef and contains six vertical chordal structures, each with a stem and several notes.

Handwritten musical notation for the second system. The top staff continues the melody from the first system. The bottom staff contains six vertical chordal structures, similar in style to the first system.

Handwritten musical notation for the third system. The top staff shows more complex rhythmic patterns with slurs and accents. The bottom staff contains six vertical chordal structures.

Four empty musical staves at the bottom of the page, indicating the end of the handwritten section.

Handwritten musical notation on a grand staff. The upper staff contains three chords with stems pointing up and a slur above them. The lower staff contains a whole rest, a treble clef, and two chords with stems pointing down. A pink vertical bar is on the left.

Handwritten musical notation on a grand staff. The upper staff contains three chords with stems pointing up and a slur above them. The lower staff contains a whole rest, a treble clef, and two chords with stems pointing down. A pink vertical bar is on the left.

Handwritten musical notation on a grand staff. The upper staff contains three chords with stems pointing up and a slur above them. The lower staff contains a treble clef, a whole note chord, and another whole note chord. A pink vertical bar is on the right.

Two empty grand staves with pink markings on the left and right sides.

Handwritten musical score for Adolf Scherbaum's Sonata for Piano, SWV 1035. The score is written on four systems of staves. The first system is marked "din" and features a circled "ff" dynamic. The second system features a circled "p" dynamic. The third system is marked "(mit + din)" and features a circled "pp" dynamic. The fourth system is marked "D.C." in a box. The notation includes various notes, rests, and dynamic markings.

Leads

Handwritten musical notation for the first system. The treble clef staff is marked with a pink bracket and 'pp'. The bass clef staff is also marked with a pink bracket. The treble staff contains a melodic line with accidentals and a slur. The bass staff contains a chordal accompaniment with a slur.

Handwritten musical notation for the second system. The treble clef staff is marked with a pink bracket. The bass clef staff is also marked with a pink bracket. The treble staff contains a melodic line with accidentals and a slur. The bass staff contains a chordal accompaniment with a slur.

Handwritten musical notation for the third system. The treble clef staff is marked with a pink bracket. The bass clef staff is also marked with a pink bracket. The treble staff contains a melodic line with accents and a slur. The bass staff contains a chordal accompaniment with a slur.

Handwritten musical notation for the fourth system. The treble clef staff is marked with a pink bracket. The bass clef staff is also marked with a pink bracket. The treble staff contains a melodic line with a slur and a double bar line. The bass staff contains a chordal accompaniment with a slur and a double bar line.

pesante

Handwritten musical notation for the first system. It consists of two staves. The top staff is in treble clef with a circled sharp sign (#) and a 4/8 time signature. The bottom staff is in bass clef. The music includes notes with accents (^) and slurs. There are some corrections and markings in pink and blue ink.

Handwritten musical notation for the second system. It consists of two staves. The top staff is in treble clef and the bottom staff is in bass clef. The music includes notes with slurs and accents. There are some corrections and markings in pink and blue ink.

Handwritten musical notation for the third system. It consists of two staves. The top staff is in treble clef and the bottom staff is in bass clef. The music includes notes with slurs and accents. There are some corrections and markings in pink and blue ink.

Handwritten musical notation for the fourth system. It consists of two staves. The top staff is in treble clef with a circled "rit" marking. The bottom staff is in bass clef. The music includes notes with slurs and accents. There are some corrections and markings in pink and blue ink.

*ruhig*

*(frei)*

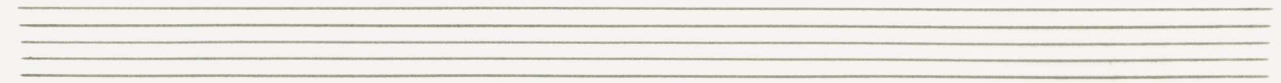




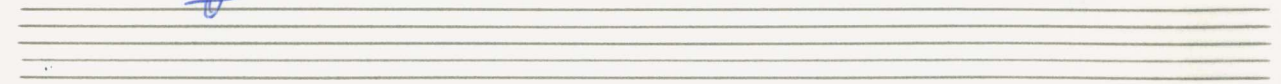
Handwritten musical notation for the first system. The top staff contains a treble clef, a circled 'p' dynamic marking, and a melodic line starting with a sharp sign and a series of notes. The bottom staff contains a bass clef, a flat sign, and a wavy line representing a tremolo. A chord diagram is shown below the bass staff.

Handwritten musical notation for the second system. The top staff contains a treble clef, a circled 'p' dynamic marking, and a melodic line starting with a sharp sign and a series of notes. The bottom staff contains a bass clef, a flat sign, and a wavy line representing a tremolo. A chord diagram is shown below the bass staff.

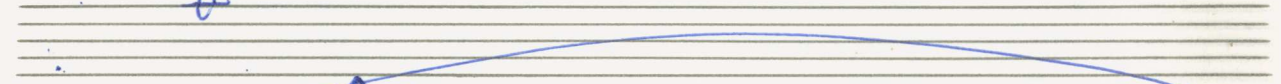
Handwritten musical notation for the third system. The top staff contains a treble clef, a circled 'p' dynamic marking, and a melodic line starting with a flat sign and a series of notes. The bottom staff contains a bass clef, a flat sign, and a wavy line representing a tremolo. A chord diagram is shown below the bass staff.



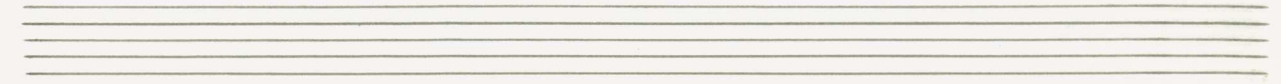
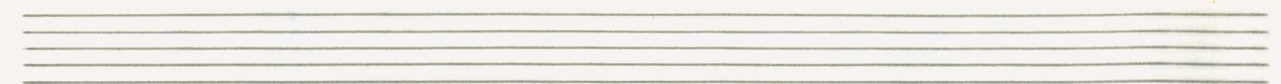
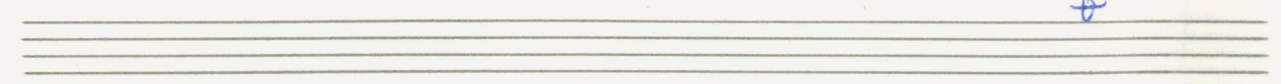
Handwritten musical notation on a grand staff. The right hand part features a series of chords with flats and a circled '4'. The left hand part has a wavy line and a circled 'b'.



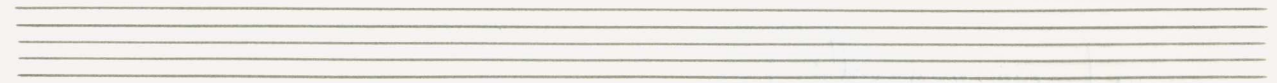
Handwritten musical notation on a grand staff, similar to the first system but with a circled '4' in the right hand and a circled 'b' in the left hand.



Handwritten musical notation on a grand staff. The right hand part has a circled '4' and a large slur. The left hand part has a circled '4' and a large slur.



*breigh* (*apparitionista*)



Handwritten musical notation for the first system. The system consists of two staves. The upper staff has a treble clef and a key signature of one sharp (F#). The time signature is 2/4, written in pink. The lower staff has a bass clef and a key signature of one sharp (F#). The music includes a melodic line with a slur and a bass line with chords and accidentals.

Handwritten musical notation for the second system. The system consists of two staves. The upper staff has a treble clef and a key signature of one sharp (F#). The time signature is 3/4, written in pink. The lower staff has a bass clef and a key signature of one sharp (F#). The music includes a melodic line with a slur and a bass line with chords and accidentals.

Handwritten musical notation for the third system. The system consists of two staves. The upper staff has a treble clef and a key signature of one sharp (F#). The lower staff has a bass clef and a key signature of one sharp (F#). The music includes a melodic line with a slur and a bass line with chords and accidentals.

Handwritten musical notation for the fourth system. The system consists of two staves. The upper staff has a treble clef and a key signature of one sharp (F#). The lower staff has a bass clef and a key signature of one sharp (F#). The music includes a melodic line with a slur and a bass line with chords and accidentals.

Subito pp (cresce cresc.)

Handwritten musical score system 1. The system consists of two staves. The upper staff is in treble clef with a circled 4/4 time signature. It contains a melodic line with a slur over the first two measures, followed by a bar line and a final measure with a fermata. The lower staff is in bass clef and contains a bass line with a slur over the first two measures, followed by a bar line and a final measure with a fermata. There are some handwritten annotations in blue ink.

Handwritten musical score system 2. The system consists of two staves. The upper staff is in treble clef and contains a melodic line with a slur over the first two measures, followed by a bar line and a final measure with a fermata. The lower staff is in bass clef and contains a bass line with a slur over the first two measures, followed by a bar line and a final measure with a fermata. There are some handwritten annotations in blue ink.

Handwritten musical score system 3. The system consists of two staves. The upper staff is in treble clef and contains a melodic line with a slur over the first two measures, followed by a bar line and a final measure with a fermata. The lower staff is in bass clef and contains a bass line with a slur over the first two measures, followed by a bar line and a final measure with a fermata. There are some handwritten annotations in blue ink.

Handwritten musical score system 4. The system consists of two staves. The upper staff is in treble clef and contains a melodic line with a slur over the first two measures, followed by a bar line and a final measure with a fermata. The lower staff is in bass clef and contains a bass line with a slur over the first two measures, followed by a bar line and a final measure with a fermata. There are some handwritten annotations in blue ink.



Handwritten musical notation on a grand staff. The right hand has a long slur over three measures. The left hand has a whole rest in the first measure, followed by two measures of chords. A circled sharp sign is in the second measure of the left hand.

Handwritten musical notation on a grand staff. The right hand has a long slur over three measures. The left hand has a whole rest in the first measure, followed by two measures of chords.

Handwritten musical notation on a grand staff. The right hand has a long slur over three measures. The left hand has a whole rest in the first measure, followed by two measures of chords with accents and a circled sharp sign.



Erstes mit + drei

Percute

Lento (auf 6 Schläge)

Pedal bis F#

P

pp

ppp

Largo (♩)

düster

*pp*

*(poco rit)*

Tempo ①

Handwritten musical notation for the first system, featuring a grand staff with treble and bass clefs. The music includes a key signature of one sharp (F#) and a 4/8 time signature. A circled 'p' (piano) dynamic marking is present. The notation shows chords and melodic lines with slurs and ties.

(rit.)

Handwritten musical notation for the second system, continuing the grand staff notation. It includes a key signature change to one flat (Bb) and a 4/8 time signature. The notation features chords and melodic lines with slurs and ties.

so ruhig wie möglich

Handwritten musical notation for the third system, featuring a grand staff with treble and bass clefs. The music includes a key signature of one flat (Bb) and a 4/8 time signature. A circled 'pp' (pianissimo) dynamic marking is present. The notation shows chords and melodic lines with slurs and ties.

Allegro

ppp

ppp

ppp

Prestissimo  
(sempre cresc.)

3/4

ppp

The image shows four systems of handwritten musical notation for piano. Each system consists of a treble clef staff and a bass clef staff. The notation is written in blue ink. The first system shows a treble clef staff with a circled '4' and a bass clef staff with a circled 'p'. The second system shows a treble clef staff with a circled '4' and a bass clef staff with a circled 'p'. The third system shows a treble clef staff with a circled '4' and a bass clef staff with a circled 'p'. The fourth system shows a treble clef staff with a circled '4' and a bass clef staff with a circled 'p'. The notation includes various notes, rests, and dynamic markings such as 'p' and 'f'. There are also some circled symbols in the treble clef staves.

Handwritten musical notation for the first system. The treble clef staff contains a melody in 7/8 time with a key signature of one sharp (F#). The melody includes eighth and quarter notes, some with accents (^). The bass clef staff shows a few notes, including a sharp sign (#).

Handwritten musical notation for the second system. The treble clef staff continues the melody with eighth and quarter notes. The bass clef staff has more notes, including a sharp sign (#) and a 4/8 time signature.

Handwritten musical notation for the third system. The treble clef staff shows the final notes of the phrase with an accent (^). The bass clef staff has notes with a sharp sign (#) and a 4/8 time signature.

Handwritten musical notation for the first system. It features a treble clef on the left, a pink vertical bar, and several measures of music. The notes are mostly quarter and eighth notes. Below the staff, there are two chord diagrams: the first shows a D major chord with a flat (D<sup>b</sup>) and the second shows a D major chord with a sharp (D<sup>#</sup>).

großes gut .....

Handwritten musical notation for the second system. It features a treble clef on the left, a pink vertical bar, and several measures of music. The notes are mostly quarter and eighth notes. Below the staff, there are three chord diagrams: the first shows a D major chord with a sharp (D<sup>#</sup>), the second shows a D major chord with a sharp and a flat (D<sup>#</sup> and D<sup>b</sup>), and the third shows a D major chord with a sharp and a flat (D<sup>#</sup> and D<sup>b</sup>).

Handwritten musical notation for the third system. It features a treble clef on the left, a pink vertical bar, and several measures of music. The notes are mostly quarter and eighth notes. Below the staff, there are several chord diagrams and a large, stylized blue scribble on the right side. The number '975' is written in the upper right corner.