

Sonate 1975

Klavier

Adolf Scherbaum

Handwritten musical score for piano, consisting of three systems of staves. The first system includes the title "Mod. arcaic" and the instruction "(Markbaur)". The second system includes the instruction "(Zügige Achtel)". The notation includes treble and bass clefs, a key signature of one sharp (F#), and various musical symbols such as notes, rests, and slurs. The right side of the page is heavily obscured by a dark vertical smudge.

Handwritten musical notation for the first system, consisting of two staves. The upper staff contains a melodic line with notes and slurs. The lower staff contains a bass line with chords and accidentals.

(poco rit)

Handwritten musical notation for the second system, consisting of two staves. The upper staff has a melodic line with a dynamic marking "> din" and slurs. The lower staff has a bass line with chords and an accent mark.

quasi

Handwritten musical notation for the third system, consisting of two staves. The upper staff has a melodic line with a circled "P" dynamic marking and slurs. The lower staff has a bass line with chords and accidentals.

Handwritten musical notation for the first system. The treble clef staff contains notes with accidentals (sharps and flats) and a slur. The bass clef staff contains chords with accidentals. A handwritten 'b' with a sharp sign is written above the first measure.

Handwritten musical notation for the second system. The treble clef staff has notes with accidentals and a slur. The bass clef staff has chords with accidentals. A circled 'f' dynamic marking is present in the second measure.

allmählich ins Tempo (A) übergehen

Handwritten musical notation for the third system. The treble clef staff has a wavy line and a circled 'p' dynamic marking. The bass clef staff has a series of notes with accidentals.

Handwritten musical notation for the fourth system. The treble clef staff has a wavy line and a circled 'D.C.' marking. The bass clef staff has notes with accidentals and a circled '7'.

Allegro agitato

Handwritten musical score for the first system. The treble clef staff contains a melodic line with notes G4, A4, B4, C5, and D5, with accents and slurs. The bass clef staff contains a bass line with notes G3, F3, E3, D3, and C3, with a circled 'f' and a circled 'p'. The tempo marking 'Allegro agitato' is written above the staff.

ovvero

Handwritten musical score for the second system. The treble clef staff continues the melodic line with notes D5, C5, B4, A4, G4, and F4, with accents and slurs. The bass clef staff continues the bass line with notes B2, A2, G2, F2, and E2, with various rhythmic markings.

Handwritten musical score for the third system. The treble clef staff continues the melodic line with notes E4, D4, C4, B3, and A3, with accents and slurs. The bass clef staff continues the bass line with notes D2, C2, B1, and A1, with various rhythmic markings. The dynamic marking 'mf' is present.

Handwritten musical score for the fourth system. The treble clef staff concludes the melodic line with notes G4, F4, E4, D4, and C4, with accents and slurs. The bass clef staff concludes the bass line with notes G2, F2, E2, and D2, with various rhythmic markings.

Allegro

Presto

Crucio quicquid

bweit posante (approximato)

Handwritten musical notation for the first system. It consists of two staves. The upper staff is in treble clef and contains several measures of music with notes, rests, and dynamic markings such as *ff*. The lower staff is in bass clef and contains corresponding notes and rests.

Handwritten musical notation for the second system. It consists of two staves. The upper staff is in treble clef and contains several measures of music with notes, rests, and dynamic markings such as *ff*. The lower staff is in bass clef and contains corresponding notes and rests.

posante

Handwritten musical notation for the third system. It consists of two staves. The upper staff is in treble clef and contains several measures of music with notes, rests, and dynamic markings such as *ff*. The lower staff is in bass clef and contains corresponding notes and rests.

gitarra

Handwritten musical notation for the fourth system. It consists of two staves. The upper staff is in treble clef and contains several measures of music with notes, rests, and dynamic markings such as *ff*. The lower staff is in bass clef and contains corresponding notes and rests.

Adagio

Handwritten musical notation for the first system. The treble clef staff contains a circled 'C' and a circled 'D'. The bass clef staff contains a circled 'pp'. The music consists of a series of eighth notes in the treble and chords in the bass. There are slurs and accents over the notes.

Handwritten musical notation for the second system. The treble clef staff contains a circled 'C'. The bass clef staff contains a circled 'pp'. The music continues with eighth notes and chords. A dynamic marking '(poco rit)' is written in the bass staff.

Handwritten musical notation for the third system. The treble clef staff contains a circled 'C'. The bass clef staff contains a circled 'pp'. The music features a melodic line in the treble and chords in the bass. A dynamic marking 'zest' is written in the bass staff.

Handwritten musical notation for the fourth system. The treble clef staff contains a circled 'C'. The bass clef staff contains a circled 'pp'. The music continues with eighth notes and chords. Dynamic markings 'mp', 'ff', and 'p' are present in the bass staff.

Accel - bis } Allegro agitato
cresc. - bis }

4
4

organo (sehr energ.)

r r r r r r r

Handwritten musical notation for the first system. It consists of two staves. The top staff is in treble clef with a circled key signature of one sharp (F#) and a 2/4 time signature. The bottom staff is in bass clef. The music includes various notes, rests, and dynamic markings.

Handwritten musical notation for the second system. It consists of two staves. The top staff is in treble clef and the bottom staff is in bass clef. The music includes various notes, rests, and dynamic markings.

Handwritten musical notation for the third system. It consists of two staves. The top staff is in treble clef and the bottom staff is in bass clef. The music includes various notes, rests, and dynamic markings.

Handwritten musical notation for the fourth system. It consists of two staves. The top staff is in treble clef and the bottom staff is in bass clef. The music includes various notes, rests, and dynamic markings.

Andante

Handwritten musical notation for the first system. The treble clef staff begins with a circled treble clef and a circled '2' over a '4', indicating a 2/4 time signature. The first measure contains a half note G4 with an accent (^) and a sharp sign (#). The second measure contains a half note A4 with a sharp sign (#). The third measure contains a half note B4 with a sharp sign (#). The fourth measure contains a half note C5 with a sharp sign (#). The fifth measure contains a half note D5 with a sharp sign (#). The sixth measure contains a half note E5 with a sharp sign (#). The seventh measure contains a half note F5 with a sharp sign (#). The eighth measure contains a half note G5 with a sharp sign (#). The bass clef staff contains a series of chords and notes, including a chord of G4, B4, D5 and a chord of A4, C5, E5.

Handwritten musical notation for the second system. The treble clef staff continues with notes and rests. The bass clef staff contains chords and notes, including a chord of G4, B4, D5 and a chord of A4, C5, E5.

Lento

Handwritten musical notation for the third system. The word "Lento" is written above the treble clef staff. The treble clef staff begins with a circled treble clef and a circled '4' over an '8', indicating a 4/8 time signature. The first measure contains a half note G4 with an accent (^) and a sharp sign (#). The second measure contains a half note A4 with an accent (^) and a sharp sign (#). The third measure contains a half note B4 with an accent (^) and a sharp sign (#). The fourth measure contains a half note C5 with an accent (^) and a sharp sign (#). The bass clef staff contains a series of chords and notes, including a chord of G4, B4, D5 and a chord of A4, C5, E5.

großes stif din

Handwritten musical notation for the first system. It consists of two staves. The upper staff is in treble clef and contains several notes, some with slurs and accents. The lower staff is in bass clef and contains notes and rests. There are dynamic markings such as 'p' and 'pp' and some handwritten annotations like '>' and '[^]'. A large slur covers the entire system.

stif

Handwritten musical notation for the second system. It consists of two staves. The upper staff is in treble clef and contains notes and rests. The lower staff is in bass clef and contains notes and rests. There are dynamic markings such as 'p' and 'pp' and some handwritten annotations like '>' and '[^]'. A large slur covers the entire system.

so ruhig wie möglich

lento

Handwritten musical notation for the third system. It consists of two staves. The upper staff is in treble clef and contains notes and rests. The lower staff is in bass clef and contains notes and rests. There are dynamic markings such as 'p' and some handwritten annotations like '>' and '[^]'. A large slur covers the entire system.

Handwritten musical notation for the first system. The treble clef staff contains a melodic line starting with a slur over a series of notes, including an accent mark (>) on the final note. The bass clef staff contains two chords with a slur underneath them.

garrif dim

Handwritten musical notation for the second system. The treble clef staff has the word "garrif" circled in a circle, followed by "dim". The melodic line below has a slur and a key signature change to one sharp (F#).

Handwritten musical notation for the third system. The treble clef staff contains a melodic line with a slur and an accent mark (>). The bass clef staff contains two chords with a slur underneath them.

Handwritten musical notation for the fourth system. The treble clef staff contains a complex melodic line with various accidentals and slurs. The bass clef staff contains several chords with slurs underneath them.

Handwritten musical notation on a grand staff. The notation includes a treble clef, a circled *ppp* dynamic marking, a 6/8 time signature, and various notes and rests. A double bar line is present. The word Lunge is written above the staff. The right hand part ends with a scribbled-out section.

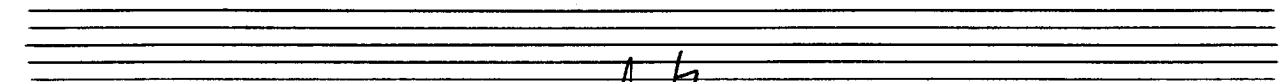
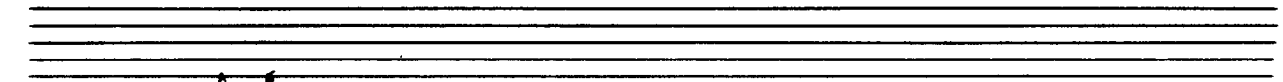
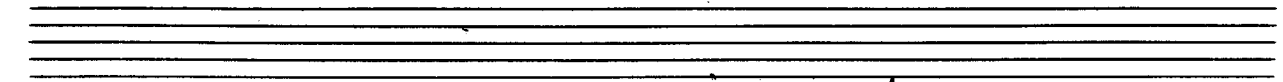
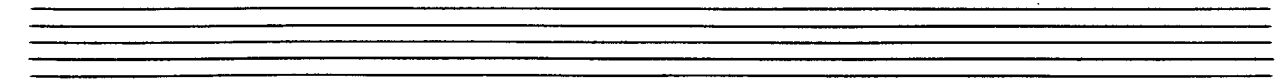
②

lento (♩)

Handwritten musical notation for the first system. It features a treble clef, a 6/8 time signature, and a piano (pp) dynamic marking. The melody is written on a single staff with a circled note and a sharp sign. The accompaniment is on a grand staff with six chords. A slur is placed over the first two measures of the melody.

Handwritten musical notation for the second system. It continues the melody and accompaniment from the first system. The melody has a slur and a circled note. The accompaniment consists of six chords.

Handwritten musical notation for the third system. It continues the melody and accompaniment. The melody has a slur and a circled note. The accompaniment consists of six chords.



The image shows a handwritten musical score for piano, consisting of four systems of staves. The notation is in treble and bass clefs. The first system features a treble staff with a circled note and a bass staff with a circled *pp* marking. The second system has a treble staff with a circled note and a bass staff with a circled *pp* marking. The third system shows a treble staff with a circled note and a bass staff with a circled *pp* marking. The fourth system includes a *cres.* marking in the treble staff and a circled *p* marking in the bass staff. The score is written in a fluid, handwritten style with various performance markings such as slurs, accents, and dynamic markings.

esente

Handwritten musical score for piano, consisting of five systems of staves. The notation is highly expressive and includes various markings such as slurs, accents, and dynamic markings like 'p' and 'f'. The first system shows a treble clef with a circled 'ppp' and a bass clef with a circled 'ppp'. The second system has a treble clef with a circled 'p'. The third system has a treble clef with a circled 'p' and a bass clef with a circled 'p'. The fourth system has a treble clef with a circled 'p' and a bass clef with a circled 'p'. The fifth system has a treble clef with a circled 'p' and a bass clef with a circled 'p'. The score ends with a double bar line.

best auslander

gut + dem

♭ C ♭ C

Handwritten musical score for the first system. It consists of two staves. The treble clef staff contains several measures of music with various notes and accidentals. A large '3' is written in the bass clef staff, and 'cresc...' is written above the treble clef staff. The system ends with a fermata.

Handwritten musical score for the second system. It consists of two staves. The treble clef staff contains several measures of music with notes and accidentals. The bass clef staff contains chords. A circled '3' is present in the bass clef staff.

Handwritten musical score for the third system. It consists of two staves. The treble clef staff contains several measures of music with notes and accidentals. A circled '3' is present in the bass clef staff. The system ends with a double bar line.

appassionato (etwas bewegt) (allmählich immer schneller)

Handwritten musical score for the fourth system. It consists of two staves. The treble clef staff contains several measures of music with notes and accidentals. The bass clef staff contains chords. A circled '3' is present in the bass clef staff.

Handwritten musical notation on a grand staff. The right hand part features a complex chord structure with many sharps and accidentals, and a large arrow pointing to the right above the staff. The left hand part has a few notes and rests.

Handwritten musical notation on a grand staff. The right hand part has a circled '7' and some notes with accidentals. The left hand part has a circled '7' and some notes with accidentals. A large arrow points to the right above the staff.

Handwritten musical notation on a grand staff. The right hand part has notes with accidentals and a large arrow pointing to the right above the staff. The left hand part has notes with accidentals and a large arrow pointing to the right below the staff.

moderato

Handwritten musical notation for the first system. The treble clef staff contains several chords and notes, with a 'b' (flat) symbol above one of the chords. The bass clef staff contains a series of notes and rests, with a 'b' (flat) symbol above the first note. There are some scribbles and corrections in the bass staff.

Handwritten musical notation for the second system. The treble clef staff contains several chords and notes, with a 'b' (flat) symbol above one of the chords. The bass clef staff contains a series of notes and rests, with a 'b' (flat) symbol above the first note. There are some scribbles and corrections in the bass staff.

Handwritten musical notation for the third system. The treble clef staff contains several chords and notes, with a 'b' (flat) symbol above one of the chords. The bass clef staff contains a series of notes and rests, with a 'b' (flat) symbol above the first note. There are some scribbles and corrections in the bass staff.

Handwritten musical notation for the fourth system. The treble clef staff contains several chords and notes, with a 'b' (flat) symbol above one of the chords. The bass clef staff contains a series of notes and rests, with a 'b' (flat) symbol above the first note. There are some scribbles and corrections in the bass staff.

großes gut... (7/17)

(breit ausstehend)

Handwritten musical notation for the first system. It consists of two staves. The upper staff is in treble clef with a 6/8 time signature. The lower staff is in bass clef. The music includes quarter notes, eighth notes, and rests. There are some handwritten annotations, including a circled 'p' in the bass staff and a circled 'f' in the bass staff.

(gr. rit + dir.)

Handwritten musical notation for the second system. It consists of two staves. The upper staff is in treble clef and the lower staff is in bass clef. The music features melodic lines with various accidentals (sharps, flats) and dynamics. There are some handwritten annotations, including a circled 'p' in the bass staff and a circled 'f' in the bass staff.

Handwritten musical notation for the third system. It consists of two staves. The upper staff is in treble clef and the lower staff is in bass clef. The music includes a large bracketed section in the upper staff and a circled 'fp' dynamic marking in the lower staff. There are also some handwritten annotations, including a circled 'p' in the bass staff and a circled 'f' in the bass staff.

pp
2. et de C₁
sol. CODA.

♩ 3/4 (frei) oder langsam

wie ein
Engländer
süß

pp

ppp

p

gut den

pp

Free

Langsam

ppp

Finale

lento

Handwritten musical notation for the first system. The top staff is in treble clef with a common time signature. It begins with a double bar line and a repeat sign. The first measure contains a half note G4 with a piano (*p*) and piano mezzo-forte (*mp*) dynamic marking. The second measure contains a half note A4 with a fermata. The third measure contains a half note B4 with a fermata. The fourth measure contains a half note C5 with a fermata. The fifth measure contains a half note B4 with a fermata. The sixth measure contains a half note A4 with a fermata. The seventh measure contains a half note G4 with a fermata. The eighth measure contains a half note F#4 with a fermata. The bottom staff shows chordal accompaniment with notes G#4, A4, B4, and C5.

Handwritten musical notation for the second system. The top staff is in treble clef with a common time signature. It begins with a double bar line and a repeat sign. The first measure contains a half note G4 with a fermata. The second measure contains a half note A4 with a fermata. The third measure contains a half note B4 with a fermata. The fourth measure contains a half note C5 with a fermata. The fifth measure contains a half note B4 with a fermata. The sixth measure contains a half note A4 with a fermata. The seventh measure contains a half note G4 with a fermata. The eighth measure contains a half note F#4 with a fermata. The bottom staff shows chordal accompaniment with notes G#4, A4, B4, and C5.

Handwritten musical notation for the third system. The top staff is in treble clef with a common time signature. It begins with a double bar line and a repeat sign. The first measure contains a half note G4 with a fermata and a piano (*p*) dynamic marking. The second measure contains a half note A4 with a fermata and a piano (*p*) dynamic marking. The third measure contains a half note B4 with a fermata and a piano (*p*) dynamic marking. The fourth measure contains a half note C5 with a fermata and a piano (*p*) dynamic marking. The bottom staff shows chordal accompaniment with notes G#4, A4, B4, and C5.

Handwritten musical notation for the first system. The right hand has a half note chord with a sharp sign and an accent (^). The left hand has a sequence of notes with a slur and a sharp sign. Dynamics include 'fpp' and 'mf'.

Handwritten musical notation for the second system. The right hand has a half note chord with a sharp sign and an accent (^). The left hand has a sequence of notes with a slur and a sharp sign.

sempre cresc. + accel. bis (Allegro con brio)

Handwritten musical notation for the third system, starting with a double bar line. The right hand has a half note chord with a sharp sign and a circled 'p'. The left hand has a sequence of notes with a slur and a sharp sign.

Handwritten musical notation for the fourth system, ending with a double bar line. The right hand has a half note chord with a sharp sign and an accent (^). The left hand has a sequence of notes with a slur and a sharp sign. A circled '24' is present.

Allegro con vivo

Handwritten musical notation for the first system. It features a treble and bass clef with a key signature of one sharp (F#). The music includes various note values and rests. A circled '3/4' is written above the first few notes, and a circled '18' is written above the bass staff. The system concludes with a double bar line.

(hart - sehr rythmisch.)

Handwritten musical notation for the second system. It continues the piece with treble and bass clefs, maintaining the one-sharp key signature. The notation includes eighth and sixteenth notes, as well as rests.

Handwritten musical notation for the third system. It features treble and bass clefs and a one-sharp key signature. The bass staff has a circled '2 1 1' above it. The system ends with a double bar line.

Handwritten musical notation for the fourth system. It continues the piece with treble and bass clefs and a one-sharp key signature. The system concludes with a double bar line.

Handwritten musical notation for the first system. The treble staff contains a melodic line with notes and slurs. The bass staff contains chords and some rhythmic markings. The system is divided into two measures by a bar line.

Handwritten musical notation for the second system. The treble staff contains a melodic line with notes and slurs. The bass staff contains chords and some rhythmic markings. The system is divided into two measures by a bar line.

Handwritten musical notation for the third system. The treble staff contains a melodic line with notes and slurs. The bass staff contains chords and some rhythmic markings. The system is divided into two measures by a bar line.

Handwritten musical notation for the fourth system. The treble staff contains a melodic line with notes and slurs. The bass staff contains chords and some rhythmic markings. The system is divided into two measures by a bar line.

Handwritten musical notation for the first system, measures 1-2. The system consists of two staves. The upper staff is in treble clef and contains two measures of music. The first measure has a melodic line starting with a quarter note G4, followed by quarter notes A4 and B4, and a half note C5. The second measure has a melodic line starting with a quarter note B4, followed by quarter notes C5 and D5, and a half note E5. Above the first measure are three 'r' marks. Above the second measure are two 'r' marks and a fermata over the first note. The lower staff is in bass clef and contains two measures of accompaniment. The first measure has a half note chord consisting of G3, B3, and C4. The second measure has a half note chord consisting of G3, B3, and C4. There are diagonal lines under the notes in the second measure of the lower staff.

Handwritten musical notation for the second system, measures 3-4. The system consists of two staves. The upper staff is in treble clef and contains two measures of music. The first measure has a melodic line starting with a quarter note G4, followed by quarter notes A4 and B4, and a half note C5. The second measure has a melodic line starting with a quarter note B4, followed by quarter notes C5 and D5, and a half note E5. Above the first measure are two 'r' marks. Above the second measure are two 'r' marks. The lower staff is in bass clef and contains two measures of accompaniment. The first measure has a half note chord consisting of G3, B3, and C4. The second measure has a half note chord consisting of G3, B3, and C4. There are diagonal lines under the notes in the second measure of the lower staff.

Handwritten musical notation for the third system, measures 5-6. The system consists of two staves. The upper staff is in treble clef and contains two measures of music. The first measure has a melodic line starting with a quarter note G4, followed by quarter notes A4 and B4, and a half note C5. The second measure has a melodic line starting with a quarter note B4, followed by quarter notes C5 and D5, and a half note E5. Above the first measure are two 'r' marks. Above the second measure are two 'r' marks. The lower staff is in bass clef and contains two measures of accompaniment. The first measure has a half note chord consisting of G3, B3, and C4. The second measure has a half note chord consisting of G3, B3, and C4. There are diagonal lines under the notes in the second measure of the lower staff.

Handwritten musical notation for the fourth system, measures 7-8. The system consists of two staves. The upper staff is in treble clef and contains two measures of music. The first measure has a half note chord consisting of G3, B3, and C4. The second measure has a half note chord consisting of G3, B3, and C4. The lower staff is in bass clef and contains two measures of accompaniment. The first measure has a half note chord consisting of G3, B3, and C4. The second measure has a half note chord consisting of G3, B3, and C4. There are diagonal lines under the notes in the second measure of the lower staff. The word 'fine' is written in the right margin of the lower staff.

subito

(Markhaut)

Handwritten musical notation for the first system. It consists of two staves. The upper staff is in treble clef and contains a circled sharp sign (#) at the beginning. The notation includes several notes with accents (^) and slurs. The lower staff is in bass clef and contains notes with accents (^) and slurs. The system concludes with a double bar line.

Handwritten musical notation for the second system. It consists of two staves. The upper staff is in treble clef and features complex chordal structures and melodic lines. The lower staff is in bass clef and contains notes with accents (^) and slurs. The system concludes with a double bar line.

Handwritten musical notation for the third system. It consists of two staves. The upper staff is in treble clef and contains various chordal textures and melodic fragments. The lower staff is in bass clef and contains notes with accents (^) and slurs. The system concludes with a double bar line.

Handwritten musical score for piano, consisting of four systems of staves. The notation includes treble and bass clefs, key signatures (F major and C major), and time signatures (4/4 and 3/4). The score features various musical notations such as notes, rests, slurs, and dynamic markings.

Key annotations and markings include:

- Handwritten text: "gut + die" at the top left.
- Circled word: "meno" in the first system.
- Handwritten text: "die tritt..." in the second system.
- Dynamic markings: "pp" (pianissimo) in the fourth system.
- Handwritten numbers: "35" at the bottom center.

lento (♩)

Handwritten musical notation for the first system. The treble clef staff contains a melodic line with eighth and sixteenth notes, some beamed together. The bass clef staff contains a harmonic accompaniment with chords and single notes. A circled 'pp' (pianissimo) dynamic marking is present. The system is enclosed in a large hand-drawn slur.

Handwritten musical notation for the second system. The treble clef staff continues the melodic line. The bass clef staff continues the harmonic accompaniment. A circled 'pp' dynamic marking is present. The system is enclosed in a large hand-drawn slur.

Handwritten musical notation for the third system. The treble clef staff continues the melodic line. The bass clef staff continues the harmonic accompaniment. A circled 'pp' dynamic marking is present. The system is enclosed in a large hand-drawn slur.

Handwritten musical notation for the first system. The treble staff contains a melodic line with a slur over two measures. The bass staff contains a chordal accompaniment with a 7/8 time signature. The key signature is G major. The first measure has a flat sign above the treble staff.

Handwritten musical notation for the second system. The treble staff contains a melodic line with a slur over two measures. The bass staff contains a chordal accompaniment with a 7/8 time signature. The key signature is G major. The instruction "poco rit" is written in the bass staff. The system ends with a double bar line.

Handwritten musical notation for the third system. The treble staff contains a melodic line with a slur over two measures. The bass staff contains a chordal accompaniment with a 3/8 time signature. The instruction "sehr ruhig" is written above the treble staff. The key signature is G major. The system ends with a double bar line.

Handwritten musical notation for the fourth system. The treble staff contains a melodic line with a slur over two measures. The bass staff contains a chordal accompaniment with a 7/8 time signature. The key signature is G major. The system ends with a double bar line.

Handwritten musical notation for the first system. The treble clef is on the top staff. The key signature has one flat (B-flat). The first measure starts with a circled 'p' and a dynamic marking 'fp'. The second measure has a dynamic marking 'f'. There are several slurs and accents throughout the system.

Handwritten musical notation for the second system. It continues the melodic line from the first system with various notes, rests, and slurs.

accel. bis Tempo ①
+ crescendo

Handwritten musical notation for the third system. The treble clef is on the top staff. The key signature has one sharp (F-sharp). The first measure has a dynamic marking 'pp'. The second measure has a circled '12'. The third measure has a circled '16'. There are several slurs and accents throughout the system.

acc. (cres.)

Handwritten musical notation on a grand staff. The right hand has a treble clef and contains a series of chords with accidentals (sharps and naturals). The left hand has a bass clef and contains a melodic line with slurs and accents. A large arrow points from the circled text above to the right.

Handwritten musical notation on a grand staff, continuing the piece. It features similar chordal textures in the right hand and a melodic line in the left hand with various articulations.

Handwritten musical notation on a grand staff. The right hand has a treble clef and contains a series of chords with accidentals. The left hand has a bass clef and contains a melodic line with slurs and accents. A circled 'D.C.' is written above the right hand. A box on the right side contains the text 'lehte x auf CODA'.

Tempo 1 Allegro con brio (agitato)

Handwritten musical notation for the first system. It features a treble clef with a 3/4 time signature and a circled *pp* dynamic marking. A six-measure slur is written above the staff. The first measure contains a sharp sign and a note. The second and third measures contain notes with accents. The fourth, fifth, and sixth measures contain chords with sharp signs and notes.

Handwritten musical notation for the second system. It features a treble clef. A six-measure slur is written above the staff. The first measure contains a sharp sign and notes. The second and third measures contain notes with accents. The fourth, fifth, and sixth measures contain chords with sharp signs and notes.

Handwritten musical notation for the third system. It features a treble clef. A six-measure slur is written above the staff. The first measure contains a flat sign and notes. The second and third measures contain notes with accents. The fourth, fifth, and sixth measures contain chords with sharp signs and notes.

Handwritten musical notation for the fourth system. It features a treble clef. A six-measure slur is written above the staff. The first measure contains sharp signs and notes. The second and third measures contain notes with accents. The fourth, fifth, and sixth measures contain chords with sharp signs and notes.

Handwritten musical notation for the first system, consisting of two staves. The notation includes various chords and melodic lines. Above the first staff, there are two large 'A' characters. Above the second staff, there are three 'A' characters. The first staff has notes with stems pointing up, and the second staff has notes with stems pointing down. The chords are marked with accidentals and stems.

Handwritten musical notation for the second system, consisting of two staves. The notation includes various chords and melodic lines. The first staff has notes with stems pointing up, and the second staff has notes with stems pointing down. The chords are marked with accidentals and stems.

Handwritten musical notation for the third system, consisting of two staves. The notation includes various chords and melodic lines. The first staff has notes with stems pointing up, and the second staff has notes with stems pointing down. The chords are marked with accidentals and stems.

Handwritten musical notation for the first system, consisting of two staves. The notation includes various rhythmic values, accidentals (sharps, flats, naturals), and dynamic markings. The music appears to be in a complex, possibly chromatic, style.

subito
Andante

Handwritten musical notation for the second system. It begins with a circled first measure in the treble clef. The notation includes dynamic markings such as *pp* and *p*, and features a large slur over the first two measures. The music continues with various notes and rests.

Handwritten musical notation for the third system, continuing the piece. It features similar notation to the previous systems, including dynamic markings like *pp* and *p*, and complex rhythmic structures.

Handwritten musical notation for the first system. The treble staff contains notes with dynamic markings pp and p , and slurs. The bass staff contains a series of notes with a dynamic marking pp .

großes Steigcamp

Handwritten musical notation for the second system. The treble staff contains notes with dynamic markings pp and p . The bass staff contains notes with a dynamic marking pp .

größtes cresc. →

Handwritten musical notation for the third system. The treble staff contains notes with dynamic markings p and pp . The bass staff contains notes with a dynamic marking pp .

Handwritten musical notation for the first system. The treble staff contains several measures of music with notes, accidentals (sharps and naturals), and dynamic markings like mf and f . The bass staff shows a long, sweeping line with some notes and a circled f marking.

Ador brief (appassionato)

Handwritten musical notation for the second system. The treble staff has notes and chords, with a circled f and a circled mf marking. The bass staff features a long line with a circled f and some notes.

Handwritten musical notation for the third system. The treble staff contains notes and chords with accidentals. The bass staff has a long line with a circled f and some notes.

presente

gut folis

[F#D6G#b]

Handwritten musical notation on a grand staff. The right hand part features a melodic line with a circled *pp* dynamic marking and a circled *6* above the first measure. The left hand part shows a chord progression with a sharp sign and a circled *6* below the first measure. A bracket above the right hand part spans the first two measures.

Handwritten musical notation on a grand staff, primarily consisting of chord diagrams in the left hand and rests in the right hand.

Handwritten musical notation on a grand staff. The right hand part has a circled *6* above the first measure. The left hand part has a circled *6* below the first measure. A bracket above the right hand part spans the first two measures.

Handwritten musical notation on a grand staff. The right hand part has a circled *rit...* marking above the first measure. The left hand part has a circled *6* below the first measure. A bracket above the right hand part spans the first two measures.

sehr ruhig + sehr zart

Handwritten musical notation for the first system. The treble clef staff contains a series of notes with accidentals (sharps and naturals) and slurs. The bass clef staff contains a few notes, including a half note with a sharp sign and a quarter note with a sharp sign. There are some markings below the bass staff, possibly indicating fingerings or dynamics.

Handwritten musical notation for the second system. The treble clef staff has notes with accidentals and slurs. The bass clef staff has notes with accidentals and slurs. Dynamic markings include *pp* (pianissimo) and *p* (piano). There are also some markings like *ff* (fortissimo) and *f* (forte) with arrows. A circled *p* is also present.

mystencioso

Handwritten musical notation for the third system. The time signature is $6/4$. The treble clef staff has notes with accidentals and slurs. The bass clef staff has notes with accidentals and slurs. Dynamic markings include *pp* (pianissimo) and *p* (piano). There are also some markings like *ff* (fortissimo) and *f* (forte) with arrows. A circled *p* is also present.

Handwritten musical score for the first system. It consists of two staves. The top staff is in treble clef and the bottom staff is in bass clef. The music begins with a **ppp** dynamic marking. The notes are mostly half notes and quarter notes, with some rests. A fermata is placed over a note in the first measure of the top staff. The second measure of the top staff has a slur over it. The third measure of the top staff has a slur over it. The bottom staff has a slur over it. There are some handwritten annotations, including a double bar line with arrows pointing outwards.

(sola pres) \rightleftharpoons

Handwritten musical score for the second system. It consists of two staves. The top staff is in treble clef and the bottom staff is in bass clef. The music begins with a circled **ppp** dynamic marking. The notes are mostly half notes and quarter notes, with some rests. A fermata is placed over a note in the first measure of the top staff. The second measure of the top staff has a slur over it. The third measure of the top staff has a slur over it. The bottom staff has a slur over it. There are some handwritten annotations, including a double bar line with arrows pointing outwards.

Allegro con brio

Handwritten musical score for the third system. It consists of two staves. The top staff is in treble clef and the bottom staff is in bass clef. The music begins with a circled **Allegro** dynamic marking. The time signature is **12/16** in the first measure and changes to **16/16** in the second measure. The notes are mostly eighth notes and quarter notes, with some rests. There are some handwritten annotations, including a double bar line with arrows pointing outwards.

Handwritten musical notation for the first system. The treble clef staff begins with a circled '16' and a sharp sign. The bass clef staff contains several chords with sharp signs. A long slur spans across both staves.

Handwritten musical notation for the second system. The treble clef staff has notes with sharp signs. The bass clef staff contains chords with sharp signs. A long slur spans across both staves.

Handwritten musical notation for the third system. The treble clef staff has notes with sharp signs and a circled '12'. The bass clef staff contains chords with sharp signs. A long slur spans across both staves. On the right, a box contains the tempo instruction: *D. C., Allegro con brio al CORD*.

(turbulent) (wuchs steigern)

The image shows a handwritten musical score on a page of ten staves. The first two staves contain musical notation in treble and bass clefs. The notation includes notes, rests, and dynamic markings. A circled annotation "Lungor" is written above the first staff, and the word "Fin" is written in large, bold letters to the right of the first staff. A large, thick, black scribble covers the right side of the first two staves. Below the first two staves, there are several staves with a large, wavy, black scribble that extends downwards. A small circle containing a sharp sign is also visible on the second staff.