

Konzert in 2 Teilen

für großes Orchester

für Klavier (Auszug)

1975

Adolf Scherbaum

Besetzung:

3 Flöten  
2 Oboen (Englisch)  
3 Klarinetten (Bass)  
3 Fagotten (Kontra)

4 Trompeten  
6 Hörner  
4 Pos.  
1 Tuba

Streicher  
Schlagwerk

1

beide 3 (parante) aber nicht schließend

Handwritten musical notation for the first system, measures 1-3. The music is in 3/4 time. The first staff contains a treble clef, a 3/4 time signature, and a series of notes with accents: D#4, E4, F#4, G4, A4, B4, C5. The second staff contains a bass clef and notes: D#3, E3, F#3, G3, A3, B3, C4. The notes are grouped in pairs and triplets.

Handwritten musical notation for the second system, measures 4-6. The first staff contains a treble clef and notes: D4, E4, F#4, G4, A4, B4, C5. The second staff contains a bass clef and notes: D3, E3, F#3, G3, A3, B3, C4. The notes are grouped in pairs and triplets.

Handwritten musical notation for the third system, measures 7-9. The first staff contains a treble clef and notes: D4, E4, F#4, G4, A4, B4, C5. The second staff contains a bass clef and notes: D3, E3, F#3, G3, A3, B3, C4. The notes are grouped in pairs and triplets.

Handwritten musical notation for the first system. The upper staff (treble clef) shows notes with accents (^) and slurs. The lower staff (bass clef) shows chords with sharp and flat accidentals. The system is divided into three measures.

Handwritten musical notation for the second system. The upper staff (treble clef) shows notes with accents (^) and slurs. The lower staff (bass clef) shows chords with sharp and flat accidentals. The system is divided into three measures.

Handwritten musical notation for the third system. The upper staff (treble clef) shows notes with slurs. The lower staff (bass clef) shows chords with sharp and flat accidentals. The system is divided into two measures.

Handwritten musical notation for the fourth system. The upper staff (treble clef) shows notes with slurs. The lower staff (bass clef) shows chords with sharp and flat accidentals. The system is divided into two measures.

—> *dim*

Handwritten musical notation for the first system, measures 1-3. The system consists of two staves. The upper staff is in treble clef and contains notes with accidentals (sharps and flats) and accents (^). The lower staff is in bass clef and contains a complex chordal accompaniment with many notes and accidentals.

Handwritten musical notation for the second system, measures 4-6. The system consists of two staves. The upper staff continues with notes and accents. The lower staff continues with the accompaniment. Measure 6 ends with a circled 'p' and a dynamic marking.

Handwritten musical notation for the third system, measures 7-9. The system consists of two staves. The upper staff has a circled 'p' and a dynamic marking, followed by notes and a slur. The lower staff has a circled 'p' and a dynamic marking, followed by a wavy line representing a tremolo or sustained sound.

Handwritten musical notation for the fourth system, measures 10-12. The system consists of two staves. The upper staff has a circled 'p' and a dynamic marking, followed by notes and a slur. The lower staff has a circled 'p' and a dynamic marking, followed by a wavy line representing a tremolo or sustained sound.

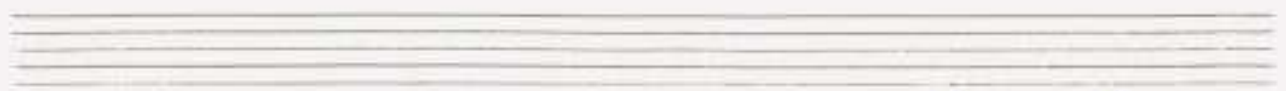
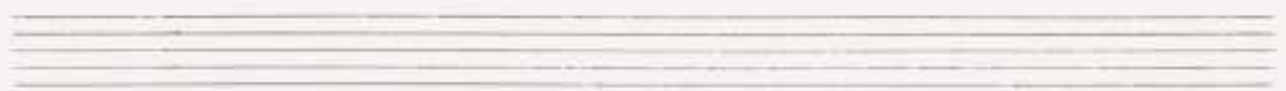
mehr breiter werden

4/4

Zeit

sehr zart (zuerst)

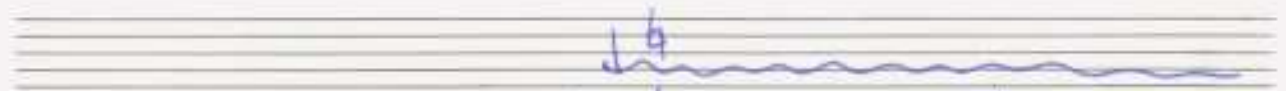
pp  $\frac{3}{4}$



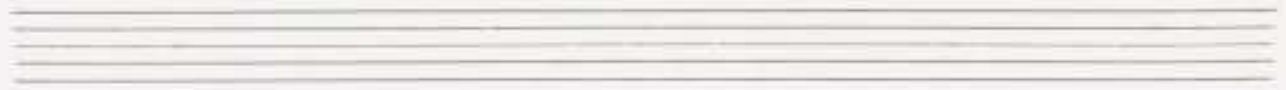
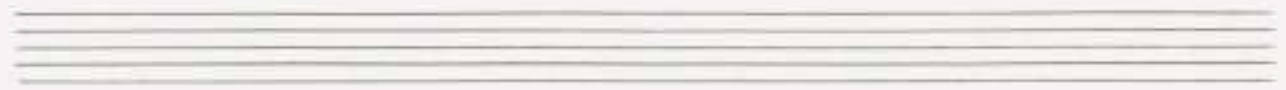
Handwritten musical notation for the first system. The treble clef staff contains a dotted quarter note followed by an eighth rest, then a quarter note, and finally a dotted quarter note. The bass clef staff contains a quarter note followed by an eighth rest, then a quarter note, and finally a dotted quarter note. A circled 'p' dynamic marking is present above the second measure of the treble staff.



Handwritten musical notation for the second system. The treble clef staff contains a dotted quarter note followed by an eighth rest, then a quarter note, and finally a dotted quarter note. The bass clef staff contains a quarter note followed by an eighth rest, then a quarter note, and finally a dotted quarter note. A circled 'p' dynamic marking is present above the second measure of the treble staff.



Handwritten musical notation for the third system. The treble clef staff contains a dotted quarter note followed by an eighth rest, then a quarter note, and finally a dotted quarter note. The bass clef staff contains a quarter note followed by an eighth rest, then a quarter note, and finally a dotted quarter note. A circled 'p' dynamic marking is present above the second measure of the treble staff.





Großes Horn

Handwritten musical notation for the first system. It features a treble clef and a key signature of one sharp (F#). The notation includes a circled 'ff' with an accent, a wavy line, and notes with stems and beams. A 'ppp' dynamic marking is present in the second measure.

subito (Presto) (mf3)

Handwritten musical notation for the second system. It features a treble clef and a key signature of one sharp (F#). The notation includes a 'ff' dynamic marking, a repeat sign, and notes with stems and beams. There are also some markings above the notes, possibly indicating articulation or phrasing.

Handwritten musical notation for the third system. It features a treble clef and a key signature of one sharp (F#). The notation includes notes with stems and beams, and some markings above the notes, possibly indicating articulation or phrasing.



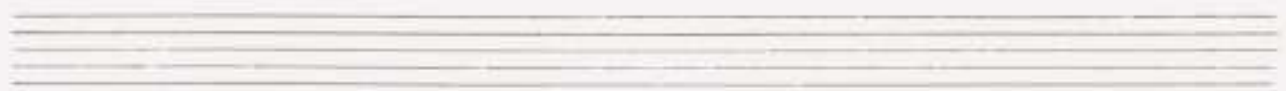




(sehr hart -----)

Polargio (siehe Breit)

großes mit + klein



(sehr ruhig) (diates.)

Handwritten musical notation for the first system. It consists of two staves. The upper staff is in treble clef with a key signature of two sharps (F# and C#) and a 6/4 time signature. It contains a half note chord (F#4, C#5) followed by a quarter note chord (F#4, C#5, G#4, C#5). The lower staff is in bass clef and contains a whole note chord (Bb3, Fb4) followed by a quarter note chord (Bb3, Fb4, Cb5, Fb4). There are dynamic markings like 'p' and 'f' and some slurs.

Handwritten musical notation for the second system. It consists of two staves. The upper staff is in treble clef with a key signature of two sharps (F# and C#) and contains a half note chord (F#4, C#5) followed by a quarter note chord (F#4, C#5, G#4, C#5). The lower staff is in bass clef and contains a whole note chord (Bb3, Fb4) followed by a quarter note chord (Bb3, Fb4, Cb5, Fb4). There are dynamic markings like 'p' and 'f' and some slurs.

dim + großes rit. ....

Handwritten musical notation for the third system. It consists of two staves. The upper staff is in treble clef with a key signature of two flats (Bb and Eb) and contains a half note chord (Bb3, Eb4) followed by a quarter note chord (Bb3, Eb4, Ab4, Eb4). The lower staff is in bass clef and contains a whole note chord (Bb3, Eb4) followed by a quarter note chord (Bb3, Eb4, Ab4, Eb4). There are dynamic markings like 'mp' and 'f' and some slurs. At the bottom right, there is a boxed signature 'P.C. al'.

Grüßes gut + dein



Handwritten musical notation for the first system. It consists of two staves. The upper staff has a treble clef and a circled key signature of three sharps (F#, C#, G#). The lower staff has a bass clef. The music includes notes, rests, and dynamic markings such as > and V. A large bracket spans across both staves in the latter part of the system.

Handwritten musical notation for the second system, continuing from the first. It features two staves with treble and bass clefs. The notation includes notes, rests, and dynamic markings like > and V. A large bracket is present over the right side of the system.

Handwritten musical notation for the third system. It consists of two staves with treble and bass clefs. The notation includes notes, rests, and dynamic markings such as > and V. A large bracket spans across both staves. There are also some handwritten annotations below the lower staff.

Handwritten musical notation on two staves. The top staff has a circled word "Lento" and a dynamic marking "pp" with an accent. The bottom staff has a dynamic marking "ppp" with an accent. There are various musical symbols including notes, rests, and a large "V" symbol.

Handwritten musical notation on two staves. The top staff has a dynamic marking "ppp" and the word "Lunga" written above it. The bottom staff has a dynamic marking "pppp" and a large bracketed shape. There are various musical symbols including notes, rests, and a wavy line.

FINALE

lento (sehr langsam) mysterioso

Handwritten musical notation for the first system. It features a treble clef and a bass clef. A circled '2' is written above the treble staff. A boxed 'ppp' is written below the treble staff. The treble staff contains a half note with a sharp sign, followed by a quarter note, a quarter note with a sharp sign, and a quarter note. The bass staff contains a half note with a sharp sign, followed by a quarter note, a quarter note with a sharp sign, and a quarter note. There are also some scribbles and additional notes in the bass staff.

Handwritten musical notation for the second system. It features a treble clef and a bass clef. The treble staff contains a half note with a flat sign, followed by a quarter note, a quarter note with a flat sign, and a quarter note. The bass staff contains a half note with a flat sign, followed by a quarter note, a quarter note with a flat sign, and a quarter note.

Chesc. >

Handwritten musical notation for the third system. It features a treble clef and a bass clef. The treble staff contains a half note with a flat sign, followed by a quarter note, a quarter note with a flat sign, and a quarter note. The bass staff contains a half note with a flat sign, followed by a quarter note, a quarter note with a flat sign, and a quarter note. A circled 'p' is written above the treble staff.

Handwritten musical notation for the fourth system. It features a treble clef and a bass clef. The treble staff contains a half note with a flat sign, followed by a quarter note, a quarter note with a flat sign, and a quarter note. The bass staff contains a half note with a flat sign, followed by a quarter note, a quarter note with a flat sign, and a quarter note. A circled 'f' is written above the treble staff.

Handwritten musical notation on a single staff, featuring notes with accidentals and a bracketed section. The text "(poco rit)" is written to the right of the staff.

Handwritten musical score for piano, consisting of two staves. The left hand part includes a circled "ff" dynamic marking and various chordal textures. The right hand part features a melodic line with slurs and accents.

Adaptiert

Handwritten musical score for piano, consisting of two staves. The left hand part includes a circled "ff" dynamic marking and various chordal textures. The right hand part features a melodic line with slurs and accents. The text "gr. rit." is written below the right hand part.

Handwritten musical score for piano, consisting of two staves. The left hand part includes a circled "ff" dynamic marking and various chordal textures. The right hand part features a melodic line with slurs and accents. The text "rit." is written to the right of the staff.



Allegro con brio (solo con brio)  
con brio

Handwritten musical notation for the first system. The treble clef staff contains a series of notes with accents (^) above them. The bass clef staff contains a series of notes with stems pointing downwards. A circled key signature of two sharps (F# and C#) is written in the left margin.

Handwritten musical notation for the second system. The treble clef staff contains notes with accents (^) above them. The bass clef staff contains notes with stems pointing downwards. A key signature change to one flat (Bb) is indicated at the start of the second measure.

Handwritten musical notation for the third system. The treble clef staff contains notes with accents (^) above them. The bass clef staff contains notes with stems pointing downwards. A key signature change to two flats (Bb and Eb) is indicated at the start of the second measure.

Handwritten musical notation for the fourth system. The treble clef staff contains notes with accents (^) above them. The bass clef staff contains notes with stems pointing downwards. A key signature change to three flats (Bb, Eb, and Ab) is indicated at the start of the second measure.

Handwritten musical score for the first system. The treble clef staff contains a melody of quarter notes: F#4, G#4, A4, B4, A4, G#4, F#4. The bass line consists of chords with stems pointing down: F#4, G#4, A4, B4, A4, G#4, F#4. Accents (^) are placed above the first and last notes of the melody and above the first and last notes of the bass line.

Handwritten musical score for the second system. The treble clef staff continues the melody: B4, A4, G#4, F#4, G#4, A4, B4. The bass line continues with chords: B4, A4, G#4, F#4, G#4, A4, B4. Accents (^) are placed above the first and last notes of the melody and above the first and last notes of the bass line.

Handwritten musical score for the third system. The treble clef staff continues the melody: B4, A4, G#4, F#4, G#4, A4, B4. The bass line continues with chords: B4, A4, G#4, F#4, G#4, A4, B4. Accents (^) are placed above the first and last notes of the melody and above the first and last notes of the bass line.

Handwritten musical score for the fourth system. The treble clef staff concludes the melody: B4, A4, G#4, F#4, G#4, A4, B4. The bass line concludes with chords: B4, A4, G#4, F#4, G#4, A4, B4. Accents (^) are placed above the first and last notes of the melody and above the first and last notes of the bass line. The system ends with a double bar line.

*subito* (pp)  $\longrightarrow$  *cresc.*

Handwritten musical notation for the first system. The treble clef has a circled sharp sign. The key signature is one sharp. The bass clef has a circled sharp sign. The music includes various notes, rests, and slurs.

Handwritten musical notation for the second system. The treble clef has a circled sharp sign. The key signature is one sharp. The bass clef has a circled sharp sign. The music includes various notes, rests, and slurs.

Handwritten musical notation for the third system. The treble clef has a circled sharp sign. The key signature is one sharp. The bass clef has a circled sharp sign. The music includes various notes, rests, and slurs.

Handwritten musical notation for the fourth system. The treble clef has a circled sharp sign. The key signature is one sharp. The bass clef has a circled sharp sign. The music includes various notes, rests, and slurs.

Handwritten musical notation for the first system. The treble clef staff begins with a circled sharp sign (#). The first measure contains a sequence of notes: G#4, A4, B4, A4, G#4, F#4, E4, D4. The second measure contains G#4, F#4, E4, D4. The bass clef staff has a whole rest in the first measure and then mirrors the treble staff's notes in the second measure: G#3, F#3, E3, D3.

Handwritten musical notation for the second system. The treble clef staff has notes: G#4, F#4, E4, D4, C4, B3, A3, G3. The bass clef staff has notes: G#3, F#3, E3, D3, C3, B2, A2, G2.

Handwritten musical notation for the third system. The treble clef staff has notes: G#4, F#4, E4, D4, C4, B3, A3, G3. The bass clef staff has notes: G#3, F#3, E3, D3, C3, B2, A2, G2.

CODA

Handwritten musical notation for the fourth system. The treble clef staff has notes: G#4, F#4, E4, D4, C4, B3, A3, G3. The bass clef staff has notes: G#3, F#3, E3, D3, C3, B2, A2, G2.

großes mit + dünn

Sehr breit

(mit - dünn)

lento (sehr zart)

(poco rit....)

(Eupl. Horn Solo) 1/4  
2+ (3er) / Klav. 8/16

frei

(in Tempo ① übergehen —)

Grave (cresc.)

Tempo ①



12. Largo →

(größte Steigerung)

poco rit

sehr breit unsterklingend (H)

(auf x-feldige)

The first system of the handwritten musical score consists of three staves. The top staff is a vocal line with a treble clef, containing several measures of music with notes and rests. The middle and bottom staves are piano accompaniment, with the middle staff in a soprano clef and the bottom staff in a bass clef. The piano part features a variety of chords, some with accidentals, and dynamic markings such as  $pp$ ,  $ppp$ , and  $pppp$ . There are also some handwritten annotations and markings above the piano staves.

The second system of the handwritten musical score continues the vocal and piano parts. It features similar notation to the first system, with a vocal line and piano accompaniment. The piano part includes chords and dynamic markings, with some notes in the piano part being marked with a slur. The overall style is that of a handwritten musical manuscript.

The third system of the handwritten musical score concludes the vocal and piano parts. It features the same notation as the previous systems, with a vocal line and piano accompaniment. The piano part includes chords and dynamic markings, with some notes in the piano part being marked with a slur. The overall style is that of a handwritten musical manuscript.

Tempo steigern →

(auf 4 Schläge)

Zwisch

Grit + din (auf x Füllhöhe)

Handwritten musical notation for the first system. It consists of two staves. The upper staff has a treble clef and a circled 'p' dynamic marking. The key signature is one sharp (F#). The notation includes a half note, followed by a quarter note, and then a series of eighth notes with a slur. There are some additional markings like a double bar line and a fermata-like symbol.

Handwritten musical notation for the second system. It consists of two staves. The upper staff has a treble clef and a circled 'fp' dynamic marking. The key signature is one flat (Bb). The notation includes a half note, followed by a series of eighth notes with a slur, and then a quarter note with an accent (^). There are some additional markings like a double bar line and a fermata-like symbol.

Handwritten musical notation for the third system. It consists of two staves. The upper staff has a treble clef and a circled 'f' dynamic marking. The key signature is one flat (Bb). The notation includes a half note, followed by a series of eighth notes with a slur, and then a quarter note with an accent (^). There are some additional markings like a double bar line and a fermata-like symbol.

*Accel. + chesi.*

cap 4 *accel.* D.C.  
rit.

*CODA* (*mosso accel.*)

Handwritten musical notation for the first system, featuring a treble clef and a bass clef. The treble staff contains a melodic line with a slur and an accent mark. The bass staff contains a bass line with a slur and an accent mark. An arrow points from the treble staff to the bass staff.

Handwritten musical notation for the second system, featuring a treble clef and a bass clef. The treble staff contains a melodic line with a slur and an accent mark. The bass staff contains a bass line with a slur and an accent mark.

*so rasch als möglich*

Handwritten musical notation for the third system, featuring a treble clef and a bass clef. The treble staff contains a melodic line with a slur and an accent mark. The bass staff contains a bass line with a slur and an accent mark. A circled 'III' is written in the left margin.

Handwritten musical notation for the fourth system, featuring a treble clef and a bass clef. The treble staff contains a melodic line with a slur and an accent mark. The bass staff contains a bass line with a slur and an accent mark.

Handwritten musical notation for the first system, featuring a treble and bass clef with various notes and accidentals.

Handwritten musical notation for the second system, including a treble clef and a large bracketed section in the bass clef.

Handwritten musical notation for the third system, with the word "Schlagpunkt" written in the bass clef.

Handwritten musical notation for the fourth system, ending with the word "Ende" and a double bar line.