

Konzert in 2 Teilen  
für großes Orchester

für Klavier (Auszug)

1975

Adolf Scherbaum

Besetzung:

3 Flöten  
2 Oboen (Engl. H.)  
3 Klarinetten (Bass)  
3 Fagotten (Konttra)

4 Trompeten  
6 Hörner  
4 Pos.  
1 Tuba

Streicher  
Schlagwerk

1

breite 3 (pente) aber nicht schleppend

Handwritten musical notation for the first system, measures 1-3. The top staff is in treble clef with a 3/4 time signature. The bottom staff is in bass clef. The music features a wide interval of a fifth in the right hand, marked with accents and slurs. The left hand provides harmonic support with chords and single notes.

Handwritten musical notation for the second system, measures 4-6. The notation continues with similar rhythmic and melodic patterns, maintaining the wide interval in the right hand and harmonic accompaniment in the left hand.

Handwritten musical notation for the third system, measures 7-10. The system concludes with a final cadence, showing the continuation of the melodic and harmonic ideas from the previous systems.

Handwritten musical score for the first system. The treble clef staff contains notes with accents (^) and slurs. The bass clef staff contains chords with accidentals (sharps and flats) and some notes with slurs.

Handwritten musical score for the second system. The treble clef staff shows notes with accents (^) and slurs. The bass clef staff contains chords with accidentals and some notes with slurs.

Handwritten musical score for the third system. The treble clef staff contains notes with slurs. The bass clef staff contains chords with accidentals and some notes with slurs.

Handwritten musical score for the fourth system. The treble clef staff contains notes with slurs. The bass clef staff contains chords with accidentals and some notes with slurs.

/ *dim*

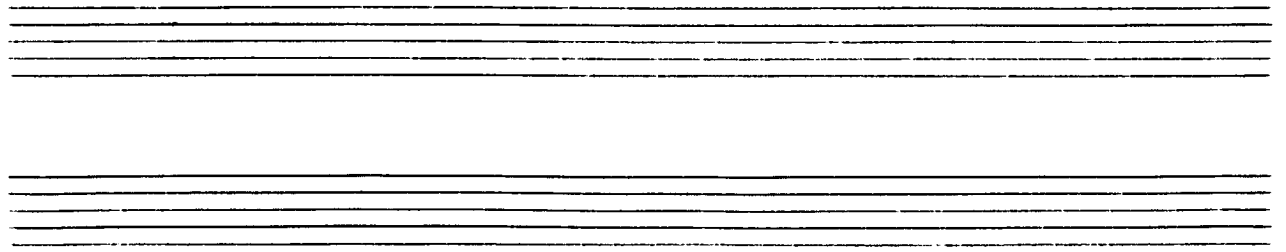
immer breiter werden

4/4

(gut)

sehr zart (zart)

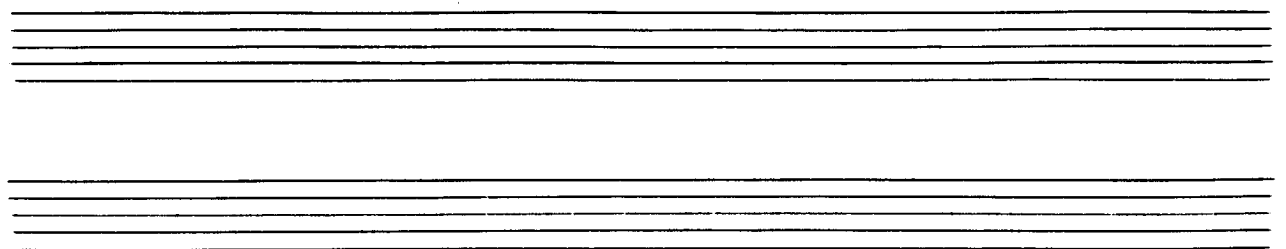
pp 3/4



Handwritten musical notation for the first system. The upper staff contains a melody with notes and rests, including a circled 'p' dynamic marking. The lower staff contains a bass line with notes and rests, including a circled 'p' dynamic marking.

Handwritten musical notation for the second system. The upper staff contains a melody with notes and rests, including a circled 'p' dynamic marking. The lower staff contains a bass line with notes and rests, including a circled 'p' dynamic marking.

Handwritten musical notation for the third system. The upper staff contains a melody with notes and rests, including a circled 'p' dynamic marking. The lower staff contains a bass line with notes and rests, including a circled 'p' dynamic marking.



Größtes mit...

subito (Presto (mf 3))

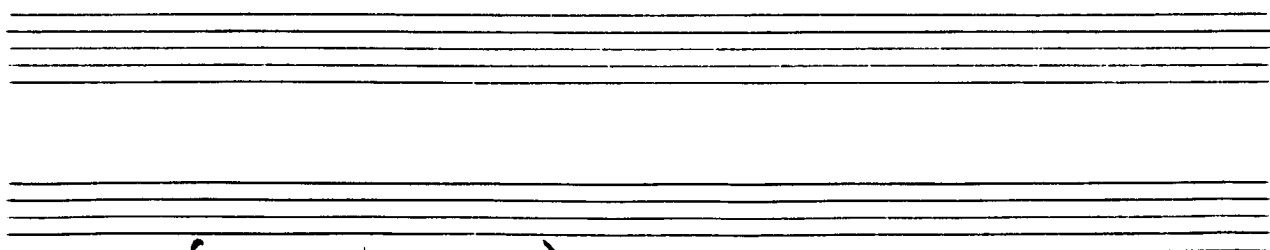
Handwritten musical notation for the first system. The right hand part consists of a series of chords with accents (^) and a slur over the first four measures. The left hand part consists of a single note with an accent (^) in the first measure, followed by two measures of rests.

Handwritten musical notation for the second system. The right hand part consists of three measures of rests. The left hand part consists of three measures of chords with accents (^).

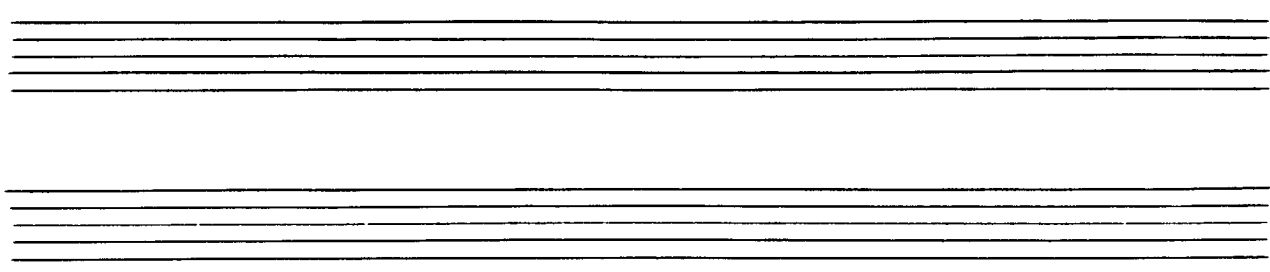
Handwritten musical notation for the third system. The right hand part consists of a melodic line with a slur and accents (^) over the first two measures. The left hand part consists of a wavy line with a slur and accents (^) over the first two measures, followed by two measures of rests.







(sehr hart.....)



Adagio (sehr breit)

Handwritten musical score for the first system. It consists of three staves: a piano staff (treble clef), a bass staff (bass clef), and a lower staff (bass clef). The piano and bass staves contain notes with various accidentals (sharps, flats, naturals) and slurs. The lower staff contains rests and some notes. There are dynamic markings such as  $\text{p}$  and  $\text{p}$  throughout the system.

Handwritten musical score for the second system. It continues the three-staff structure from the first system. The piano and bass staves contain notes with accidentals and slurs. The lower staff contains rests and notes. Dynamic markings include  $\text{p}$  and  $\text{p}$ .

großes mit + ohne

(sehr ruhig) (düster)

Handwritten musical notation for the first system, including a circled 'P' and dynamic markings.

Handwritten musical notation for the second system, including dynamic markings and fermatas.

dim + großes rit.

Handwritten musical notation for the third system, including dynamic markings and fermatas.

D.C.  
al

Grüßes mit + diem



Handwritten musical notation for the first system. The top staff is in treble clef with a key signature of one sharp (F#) and a 4/4 time signature. The bottom staff is in bass clef. The music consists of several measures with notes, rests, and dynamic markings. A circled '4' is present in the first measure of the top staff. A large bracket spans the first two measures of the top staff. A vertical bar line is present after the second measure.

Handwritten musical notation for the second system, continuing from the first. It features similar notation with notes, rests, and dynamic markings. A large bracket spans the first two measures of the top staff. A vertical bar line is present after the second measure.

Handwritten musical notation for the third system. The top staff continues with notes and rests. The bottom staff has some notes and rests. A circled '4' is present in the first measure of the top staff. A large bracket spans the first two measures of the top staff. A vertical bar line is present after the second measure.

Leuto

event >

(pp) >

ppp

Lunga

ppp

pppp

# FINALE

lento (sehr langsam) misterioso

Handwritten musical notation for the first system. The top staff is in treble clef with a circled 'a' above the first note. The bottom staff is in bass clef with a circled '8' above the first note. A box containing 'ppp' is written between the staves. The key signature has one sharp (F#). The notation includes various note values and rests.

Handwritten musical notation for the second system. The top staff is in treble clef and the bottom staff is in bass clef. The key signature has two flats (Bb, Eb). The notation includes various note values and rests.

*cresc. >*

Handwritten musical notation for the third system. The top staff is in treble clef and the bottom staff is in bass clef. A circled 'p' is written above the top staff. The notation includes various note values and rests.

Handwritten musical notation for the fourth system. The top staff is in treble clef and the bottom staff is in bass clef. A circled 'f' is written above the top staff. The notation includes various note values and rests.

Handwritten musical notation on a single staff, featuring a sequence of notes with accidentals (sharps and naturals) and a bracketed section. The text "(poco rit)" is written at the end of the staff.

Handwritten musical notation for a piano accompaniment, showing two staves with chords and melodic lines. Includes dynamic markings like  $pp$  and  $ff$ , and various articulation marks.

Adahveit

Handwritten musical notation for a piano accompaniment, showing two staves with chords and melodic lines. Includes dynamic markings like  $ff$  and various articulation marks.

Handwritten musical notation for a piano accompaniment, showing two staves with chords and melodic lines. Includes dynamic markings like  $ff$  and various articulation marks.

Handwritten musical notation for a piano accompaniment, showing two staves with chords and melodic lines. Includes dynamic markings like  $ff$  and various articulation marks. The word "Allegro" is written at the end of the section with an arrow pointing right.



*Allegro con brio (solo concert)*

Handwritten musical notation for the first system. The treble clef staff contains a circled key signature of two sharps (F# and C#) and a circled time signature of 3/4. Above the staff are several accents (^) and the word "con brio". The bass clef staff contains a melodic line with eighth notes and rests.

Handwritten musical notation for the second system. The treble clef staff features chords with accents (^) and a key signature change to one flat (Bb). The bass clef staff continues the melodic line from the first system.

Handwritten musical notation for the third system. The treble clef staff features chords with accents (^) and a key signature change to two flats (Bb and Eb). The bass clef staff continues the melodic line.

Handwritten musical notation for the fourth system. The treble clef staff features chords with accents (^) and a key signature change to one flat (Bb). The bass clef staff continues the melodic line.

Handwritten musical notation for the first system. The top staff is in treble clef and the bottom staff is in bass clef. The music consists of several measures with notes, rests, and accidentals. A large slur covers the first two measures of the treble staff. The bass staff contains chords and single notes.

Handwritten musical notation for the second system. The notation continues with complex rhythmic patterns and accidentals in both staves. A large slur is present in the treble staff, and the bass staff shows intricate chordal structures.

Handwritten musical notation for the third system. The treble staff features a long, sweeping slur over several measures. The bass staff continues with complex harmonic support.

Handwritten musical notation for the fourth system, concluding the page with a double bar line. The notation includes various notes, rests, and accidentals in both staves.

*rubato* **pp** *Cresc.*

Handwritten musical notation for the first system. The upper staff contains chords with accidentals (sharps and naturals) and stems. The lower staff contains a melodic line with eighth and quarter notes. A circled 'pp' dynamic marking is present at the start of the first measure.

Handwritten musical notation for the second system. The upper staff contains chords with flats and naturals. The lower staff contains a melodic line with eighth and quarter notes. A circled 'p' dynamic marking is present at the start of the first measure.

Handwritten musical notation for the third system. The upper staff contains chords with flats and naturals. The lower staff contains a melodic line with eighth and quarter notes, including accents. A circled 'f' dynamic marking is present at the start of the first measure.

Handwritten musical notation for the fourth system. The upper staff contains chords with flats and naturals, including accents. The lower staff contains a melodic line with eighth and quarter notes, including accents. A circled 'f' dynamic marking is present at the start of the first measure.

Handwritten musical score system 1. The system consists of two staves. The upper staff is in treble clef and contains a melodic line with various accidentals (sharps, flats, naturals) and slurs. The lower staff is in bass clef and contains a bass line with notes and rests. A circled '74' is written in the left margin.

Handwritten musical score system 2. The system consists of two staves. The upper staff is in treble clef and contains a melodic line with various accidentals and slurs. The lower staff is in bass clef and contains a bass line with notes and rests. A circled '75' is written in the left margin, and a circled 'P' is written in the right margin.

Handwritten musical score system 3. The system consists of two staves. The upper staff is in treble clef and contains a melodic line with various accidentals and slurs. The lower staff is in bass clef and contains a bass line with notes and rests. A circled '76' is written in the left margin.

Handwritten musical score system 4. The system consists of two staves. The upper staff is in treble clef and contains a melodic line with various accidentals and slurs. The lower staff is in bass clef and contains a bass line with notes and rests. A circled 'P' is written in the left margin, and a circled '77' is written in the right margin.

Handwritten musical notation for the first system. The treble clef staff begins with a circled sharp sign (#). The music consists of two measures. The first measure contains a melodic line with a slur and an accent (^) over the first note, and a bass line with a whole rest. The second measure continues the melodic line with a slur and an accent (^) over the first note, and the bass line has a melodic line with a slur and an accent (^) over the first note.

Handwritten musical notation for the second system. The treble clef staff has two measures. The first measure has a melodic line with a slur and an accent (^) over the first note, and a bass line with a melodic line with a slur and an accent (^) over the first note. The second measure has a melodic line with a slur and an accent (^) over the first note, and a bass line with a melodic line with a slur and an accent (^) over the first note.

Handwritten musical notation for the third system. The treble clef staff has two measures. The first measure has a melodic line with a slur and an accent (^) over the first note, and a bass line with a melodic line with a slur and an accent (^) over the first note. The second measure has a melodic line with a slur and an accent (^) over the first note, and a bass line with a melodic line with a slur and an accent (^) over the first note.

Handwritten musical notation for the fourth system. The treble clef staff has two measures. The first measure has a melodic line with a slur and an accent (^) over the first note, and a bass line with a melodic line with a slur and an accent (^) over the first note. The second measure has a melodic line with a slur and an accent (^) over the first note, and a bass line with a melodic line with a slur and an accent (^) over the first note. A box containing the word "CODA" is located to the right of the second measure. The system ends with a double bar line.

großes mit + dünn

Sehr breit

(mit - dünn)

pp >

Leuto (sehr zart)

Handwritten musical notation for the first system. The treble clef staff contains a key signature of one flat (B-flat) and a tempo marking of "Leuto (sehr zart)". The piano part is marked "pp" (pianissimo). The notation includes quarter notes, eighth notes, and sixteenth notes with various ornaments and slurs.

Handwritten musical notation for the second system. The treble clef staff continues with a key signature of one flat and a piano part marked "pp". The notation features quarter notes and eighth notes with slurs and ornaments.

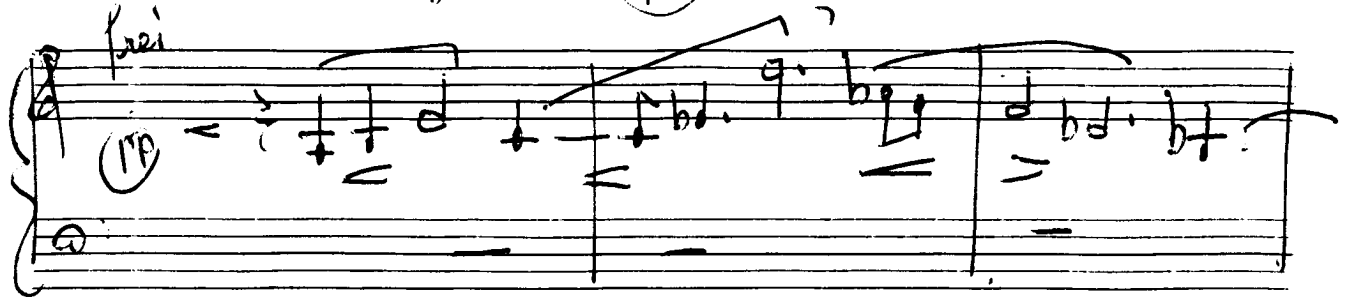
Handwritten musical notation for the third system. The treble clef staff continues with a key signature of one flat and a piano part marked "pp". The notation includes quarter notes and eighth notes with slurs and ornaments.

(poco rit....)

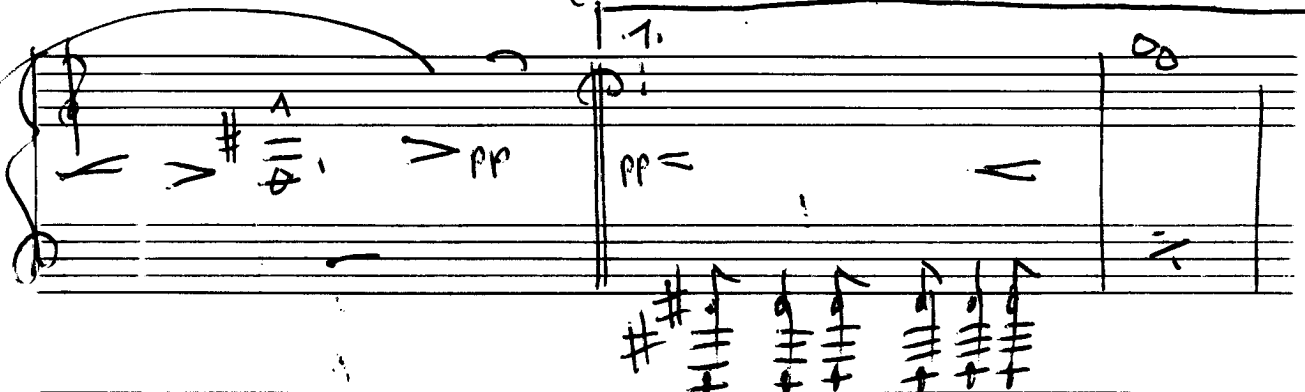
Handwritten musical notation for the fourth system. The treble clef staff continues with a key signature of one flat and a piano part marked "pp". The notation includes quarter notes and eighth notes with slurs and ornaments. The system concludes with a circled double bar line.

(Euph. Horn F. ds) 4+  
2+ / Bassklav. 8

frei



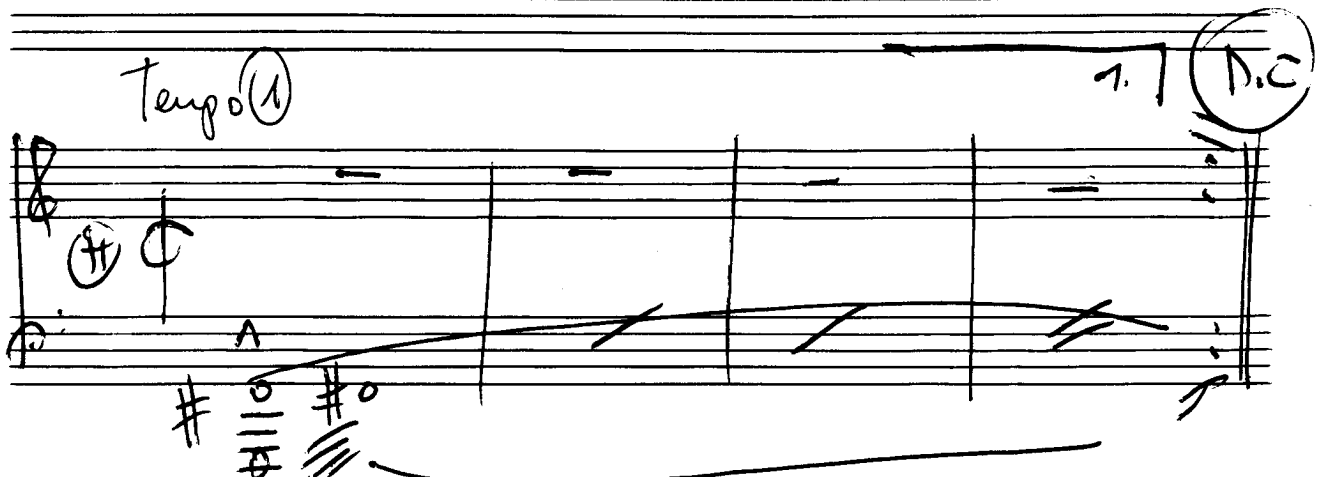
(ins Tempo ① übergehen —)



Grue). (cresc.)



Tempo ①





12. *largo* →

(größte Steigerung)

sehr breit umstehend (7H)

(auf 8 Halbtöne)

Handwritten musical score for the first system. It consists of a treble clef staff with a melodic line and a grand staff (treble and bass clefs) with piano accompaniment. The key signature has three sharps (F#, C#, G#). The piano part includes a circled '7H' and a circled '4'. The notation includes various notes, rests, and dynamic markings.

Handwritten musical score for the second system, continuing the melodic and piano parts from the first system. The notation includes various notes, rests, and dynamic markings.

Handwritten musical score for the third system, continuing the melodic and piano parts from the second system. The notation includes various notes, rests, and dynamic markings.

Tempo steigern

This system contains a piano part on a single staff and a keyboard reduction on two staves. The piano part begins with a melodic line in the right hand and a bass line in the left hand, both marked with accents. A large bracket spans the first two measures, and a handwritten instruction 'Tempo steigern' with a right-pointing arrow is written above the staff. The keyboard reduction shows the left and right hands with various chords and intervals.

(auf 4 Schläge)

This system continues the piano and keyboard parts. The piano part features a melodic line with a slur over the first two measures and a fermata over the third. The keyboard reduction includes a specific instruction '(auf 4 Schläge)' written above the right hand in the third measure. The notation includes various chords and rhythmic markings.

This system shows the final part of the handwritten score. The piano part continues with a melodic line and a bass line, both with accents and slurs. The keyboard reduction features complex chordal structures with many sharps and flats, indicating a key signature change or a highly chromatic passage. The notation includes various rhythmic values and dynamic markings.

Zurück

Handwritten musical score for the first system. The treble clef part has a key signature of one flat and a common time signature. The right hand contains a melodic line with slurs and accents. The left hand has a bass line with a key signature change to two sharps. A circled chord symbol is present at the end of the system.

Grüttdin (auf x schlagen)

Handwritten musical score for the second system. The treble clef part has a key signature of one flat and a common time signature. The right hand contains a melodic line with slurs and accents. The left hand has a bass line with a key signature change to two sharps. A circled chord symbol is present at the end of the system.

Handwritten musical score for the third system. The treble clef part has a key signature of one flat and a common time signature. The right hand contains a melodic line with slurs and accents. The left hand has a bass line with a key signature change to two sharps. A circled chord symbol is present at the end of the system.

Handwritten musical notation for the first system. It consists of two staves. The upper staff begins with a circled '2' and a circled 'p'. The music features a treble clef, a key signature of one sharp (F#), and a melodic line with slurs and accents. The lower staff contains a few notes and rests.

Handwritten musical notation for the second system. It consists of two staves. The upper staff starts with a treble clef, a key signature of one flat (Bb), and a melodic line with slurs and accents. Dynamic markings include 'fp' and 'f'. The lower staff contains a complex rhythmic pattern with slurs and accents.

Handwritten musical notation for the third system. It consists of two staves. The upper staff starts with a treble clef, a key signature of one flat (Bb), and a melodic line with slurs and accents. Dynamic markings include 'fp' and 'f'. The lower staff contains a complex rhythmic pattern with slurs and accents.

*accel. = cresc.*



so rasch als  
möglich

Handwritten musical notation for the first system, featuring a treble and bass clef with various notes, accidentals, and slurs.

Handwritten musical notation for the second system, including a treble clef, a bass clef with a long horizontal line, and various musical symbols.

Handwritten musical notation for the third system, with a treble clef, a bass clef, and the handwritten word "Schlagwerk".

Handwritten musical notation for the fourth system, featuring a treble clef, a bass clef, and the handwritten words "GLISS" and "COUR".