

Sonate für Piano -  
Bass -  
Schlagzeug -

(3 Teile) 1975

Adolf Scherbaum

F 153 Scherbaum 1062

Mod. arioso

Teil ①

Piano  
Klavier

Baß  
Schlagz

Handwritten musical score for the first system. The piano part (top staff) is in treble clef with a 3/4 time signature, marked 'pp' and featuring a triplet of eighth notes. The bass drum part (bottom staff) is in bass clef with a 4/4 time signature, marked 'p' and 'Solo', and contains a sequence of notes: d, d, b, d, d, b, d, d, b, d, b, d, b, d, b, d. A key signature change to one flat is indicated below the bass drum staff.

Handwritten musical score for the second system. The piano part (top staff) continues with melodic lines and dynamics like 'p' and 'f'. The bass drum part (bottom staff) continues with notes: d, d, +, +, d, d, b, d, b, d, d. A key signature change to two flats is indicated below the bass drum staff.

Handwritten musical score for Scherzo No. 3 in F major, BWV 1063 by Franz Schubert. The score is written on a grand staff with piano and bass clefs. It consists of two systems of four staves each. The first system includes a treble clef staff with a key signature of one sharp (F#), a piano staff with chords and dynamics, and two bass clef staves with chords and dynamics. The second system continues with similar notation, including a treble clef staff with triplets and dynamics, a piano staff with chords, and two bass clef staves with chords and dynamics. A circled number '3' is in the top right corner, and a circled number '4' is in the middle of the second system. The score is annotated with various musical symbols like accents, slurs, and dynamics.

Handwritten musical score for measures 5, 6, and 7. The score is written on three staves (treble, alto, and bass clefs). Measure 5 is circled with a '5'. The notation includes various notes, rests, and dynamic markings such as  $f$  and  $ff$ . There are also some handwritten annotations above the notes, possibly indicating fingerings or articulation.

Handwritten musical score for measures 6 and 7. The score is written on three staves (treble, alto, and bass clefs). Measure 6 is circled with a '6' and measure 7 is circled with a '7'. The notation includes various notes, rests, and dynamic markings such as  $f$  and  $ff$ . There are also some handwritten annotations above the notes, possibly indicating fingerings or articulation.

Handwritten musical score for the first system, measures 1-5. The system includes a vocal line and two piano accompaniment staves.

**Measure 1:** Vocal line starts with a treble clef, key signature of one sharp (F#), and a dynamic marking of  $\text{ff}$  with an accent (^). The piano accompaniment consists of a bass line with a treble clef and a right-hand line with a bass clef.

**Measure 2:** Similar to measure 1, with accents (^) on the vocal notes.

**Measure 3:** The vocal line contains the word "dun" with a dynamic marking of  $\text{f}$  and an accent (^). The piano accompaniment continues.

**Measure 4:** Similar to measure 3, with a dynamic marking of  $\text{f}$  and an accent (^).

**Measure 5:** The vocal line ends with a dynamic marking of  $\text{p}$  and an accent (^). The piano accompaniment concludes with a circled  $\text{p}$  dynamic marking.

Measure numbers 1, 2, 3, 4, and 5 are circled at the end of each measure.

Handwritten musical score for the second system, measures 6-9. The system includes a vocal line and two piano accompaniment staves.

**Measure 6:** The vocal line is silent. The piano accompaniment features a dynamic marking of  $\text{pp}$  in both parts.

**Measure 7:** The vocal line is silent. The piano accompaniment features a dynamic marking of  $\text{pp}$  in both parts.

**Measure 8:** The vocal line is silent. The piano accompaniment features a dynamic marking of  $\text{f}$  in both parts.

**Measure 9:** The vocal line is silent. The piano accompaniment features a dynamic marking of  $\text{f}$  in both parts.

Measure numbers 6, 7, 8, and 9 are circled at the end of each measure.

Handwritten musical score for the first system of "Sonata für Viola, Violoncello und Schlagzeug (3 Teile), BWV 1063 (1978)". The system includes three staves: Violin (top), Viola (middle), and Cello/Double Bass (bottom). The music is in 3/4 time. The first staff has a circled *p* and a *p* dynamic marking. The second staff has a circled *f* and a *p* dynamic marking. The third staff has a circled *f* and a *p* dynamic marking. There are various musical notations including notes, rests, and fingerings.

Handwritten musical score for the second system of "Sonata für Viola, Violoncello und Schlagzeug (3 Teile), BWV 1063 (1978)". The system includes three staves: Violin (top), Viola (middle), and Cello/Double Bass (bottom). The music is in 3/4 time. The first staff has a circled *p* and a *p* dynamic marking. The second staff has a circled *f* and a *p* dynamic marking. The third staff has a circled *f* and a *p* dynamic marking. There are various musical notations including notes, rests, and fingerings.

Schlappz. Solo

Baß  
schlag

Handwritten musical score for the first system, measures 1-4. The score is written on a grand staff with piano, bass, and cello parts. Measure 1 contains complex chords with accents. Measure 2 has a fermata. Measure 3 has a fermata and a circled '14'. Measure 4 has a fermata and a circled '14'.

Handwritten musical score for the second system, measures 5-8. The score is written on a grand staff with piano, bass, and cello parts. Measure 5 has a circled '15' and a piano dynamic marking. Measure 6 has a fermata. Measure 7 has a fermata. Measure 8 has a fermata and a circled '15'.



Handwritten musical score for Scherzo in F major, BWV 1060 by Adolf Scherbaum. The score is written on two systems of three staves each.

The first system includes a treble clef staff with a *dim* marking, a bass clef staff with a *P* marking, and a grand staff with a *P* marking. Measure numbers 15, 16, and 17 are circled.

The second system includes a grand staff with a *Pedal (P)* marking and a *Pedal over* marking. The score features various musical notations including dynamics, articulation marks, and a repeat sign.

18

Pedal (p=)

19

Pedal (appassionata)

Handwritten musical score for measures 20-21. The score is written on three staves. The first staff contains melodic lines with various accidentals and slurs. The second staff contains a bass line with notes and rests. The third staff contains a bass line with notes and rests. The measure numbers 20 and 21 are circled at the end of each system.

Handwritten musical score for measures 20-21. The score is written on three staves. The first staff contains melodic lines with various accidentals and slurs. The second staff contains a bass line with notes and rests. The third staff contains a bass line with notes and rests. The measure numbers 20 and 21 are circled at the end of each system.

Schlagz. Solo 1. Solo (frei) ad lib. (ausbauen!)

Tempo 1

Handwritten musical notation for the first solo section, including a treble clef, a key signature of one sharp (F#), and a common time signature. The notation includes various rhythmic patterns, accents, and slurs. A circled 'p' and a circled '22' are visible below the notes.

2. Schlagz. Solo frei (rit + dim)

Handwritten musical notation for the second solo section, including a treble clef, a key signature of one sharp (F#), and a common time signature. The notation includes various rhythmic patterns, accents, and slurs. A circled '22' and a circled '23' are visible below the notes.

(Kl. G.P.) folgt —  
(Teil 2 →

frei mitig

(2) (29)

P-1-A-20

breit (appassionata)

P. A.  
2

Baß

Schlagz.

Handwritten musical score for measures 28-30, first system. It includes staves for Piano (P.A. 2), Bass (Baß), and Snare Drum (Schlagz.). Measure 28 is circled. The piano part features chords with accents and slurs. The bass part has a triplet of eighth notes. The snare drum part has rhythmic patterns with accents.

Handwritten musical score for measures 28-30, second system. It includes staves for Piano (P.A. 2), Bass (Baß), and Snare Drum (Schlagz.). Measure 30 is circled. The piano part features a triplet of eighth notes. The bass part has a triplet of eighth notes. The snare drum part has rhythmic patterns with accents.

PIANO

5060

Pedal (7#H =  $b \underline{\underline{b}} \underline{\underline{d}}$ )

Pretra (frei)

31

gut -

U - lio

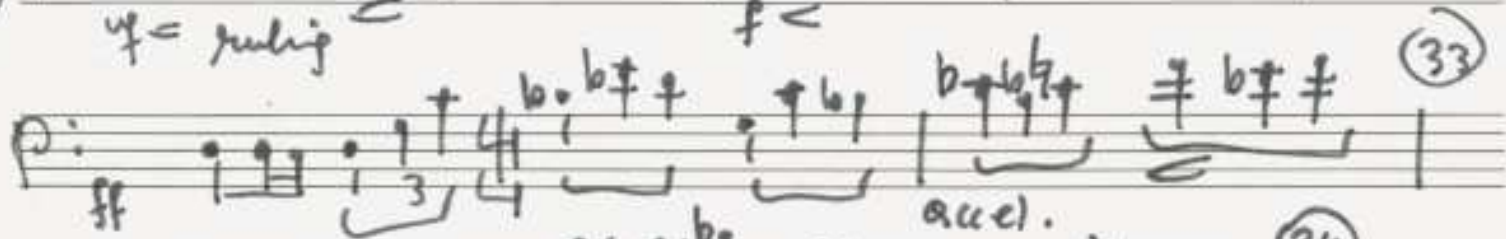
Pedal aus

Baß Solo (frei gestalten!)

31



32



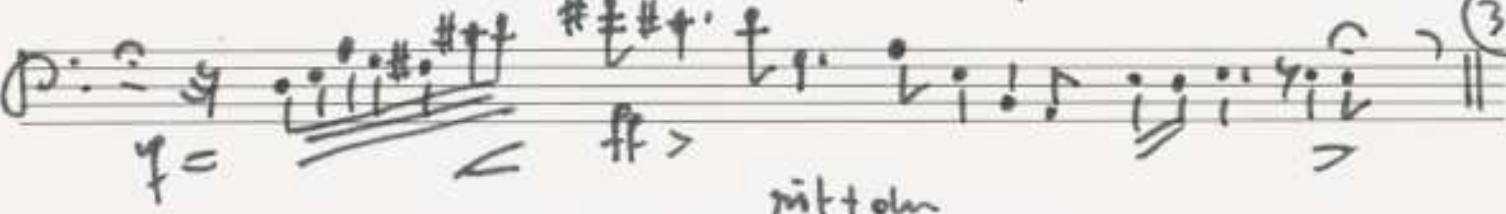
33



34



35



36



(folgt Teil ② Anfang) bis ③ dann ♪ auf ♪

♩ *lento* ③

PIANO

Bass

Schlag.

①

pp =

Handwritten musical score for the first system. It consists of three staves: a top staff (likely piano), a middle staff (likely violin), and a bottom staff (likely cello/contrabass). The top staff begins with a circled **f** and contains a long horizontal line with two 'v' marks. The middle staff has a circled **p** and contains a series of notes with stems. The bottom staff has a circled **ppp** and contains rhythmic markings. A circled **2** is written above the first measure of the middle staff, and a circled **1** is written above the second measure. A circled **1** is written above the final measure of the system.

Handwritten musical score for the second system. It consists of three staves: a top staff (likely piano), a middle staff (likely violin), and a bottom staff (likely cello/contrabass). The top staff has the word **frei** written above it and contains a series of notes with stems. The middle staff has the word **Pedal** written above it and contains a series of notes with stems. The bottom staff has the word **frei** written above it and contains a series of notes with stems. A circled **1** is written above the first measure of the top staff, and a circled **1** is written above the first measure of the bottom staff. A circled **1** is written above the final measure of the system. The system ends with a double bar line and a wavy line.

sehr rasch

Teil ③

Handwritten musical score for the first system of Part 3. The score is written on a grand staff with piano and bass staves. The piano part (top) has a treble clef and contains chords and melodic lines with slurs and accents. The bass part (bottom) has a bass clef and contains a rhythmic pattern of eighth notes with slurs and accents. A circled '1' is in the top right corner.

Handwritten musical score for the second system of Part 3. The score is written on a grand staff with piano and bass staves. The piano part (top) has a treble clef and contains chords and melodic lines with slurs and accents. The bass part (bottom) has a bass clef and contains a rhythmic pattern of eighth notes with slurs and accents. A circled '2' is above the piano staff and a circled '3' is in the top right corner.

Handwritten musical score for the first system of Scherzo No. 3. It consists of three staves: Violin I (top), Violin II (middle), and Piano (bottom). The key signature is one sharp (F#) and the time signature is 3/4. The first staff has a circled '4' above the first measure. The music features eighth and sixteenth notes with various ornaments and slurs. The piano part has a rhythmic pattern of eighth notes.

Handwritten musical score for the second system of Scherzo No. 3. It consists of three staves: Violin I (top), Violin II (middle), and Piano (bottom). The key signature is one sharp (F#) and the time signature is 3/4. The first staff has a circled '5' above the first measure and a circled '6' above the last measure. The music continues with similar notation to the first system, including slurs and ornaments.

Handwritten musical notation for measures 7 and 8. The system consists of three staves: Treble Clef (top), Bass Clef (middle), and Bass Clef (bottom). Measure 7 is circled with a '7'. Measure 8 is circled with an '8'. The notation includes various notes, rests, and dynamic markings.

Measure 7 notes (approximate):  
 Treble:  $\hat{b}^{\flat} \hat{g} \hat{a} \hat{b}$   
 Middle:  $\hat{b} \hat{a} \hat{g} \hat{f}$   
 Bass:  $\hat{b} \hat{a} \hat{g} \hat{f}$

Measure 8 notes (approximate):  
 Treble:  $\hat{b} \hat{a} \hat{g} \hat{f}$   
 Middle:  $\hat{b} \hat{a} \hat{g} \hat{f}$   
 Bass:  $\hat{b} \hat{a} \hat{g} \hat{f}$

Measure 9 notes (approximate):  
 Treble:  $\hat{b} \hat{a} \hat{g} \hat{f}$   
 Middle:  $\hat{b} \hat{a} \hat{g} \hat{f}$   
 Bass:  $\hat{b} \hat{a} \hat{g} \hat{f}$

Measure 10 notes (approximate):  
 Treble:  $\hat{b} \hat{a} \hat{g} \hat{f}$   
 Middle:  $\hat{b} \hat{a} \hat{g} \hat{f}$   
 Bass:  $\hat{b} \hat{a} \hat{g} \hat{f}$

Measure 11 notes (approximate):  
 Treble:  $\hat{b} \hat{a} \hat{g} \hat{f}$   
 Middle:  $\hat{b} \hat{a} \hat{g} \hat{f}$   
 Bass:  $\hat{b} \hat{a} \hat{g} \hat{f}$

Measure 12 notes (approximate):  
 Treble:  $\hat{b} \hat{a} \hat{g} \hat{f}$   
 Middle:  $\hat{b} \hat{a} \hat{g} \hat{f}$   
 Bass:  $\hat{b} \hat{a} \hat{g} \hat{f}$

Handwritten musical notation for measures 9 and 10. The system consists of three staves: Treble Clef (top), Bass Clef (middle), and Bass Clef (bottom). Measure 9 is circled with a '9'. Measure 10 is circled with a '10'. The notation includes various notes, rests, and dynamic markings.

Measure 9 notes (approximate):  
 Treble:  $\hat{b} \hat{a} \hat{g} \hat{f}$   
 Middle:  $\hat{b} \hat{a} \hat{g} \hat{f}$   
 Bass:  $\hat{b} \hat{a} \hat{g} \hat{f}$

Measure 10 notes (approximate):  
 Treble:  $\hat{b} \hat{a} \hat{g} \hat{f}$   
 Middle:  $\hat{b} \hat{a} \hat{g} \hat{f}$   
 Bass:  $\hat{b} \hat{a} \hat{g} \hat{f}$

Measure 11 notes (approximate):  
 Treble:  $\hat{b} \hat{a} \hat{g} \hat{f}$   
 Middle:  $\hat{b} \hat{a} \hat{g} \hat{f}$   
 Bass:  $\hat{b} \hat{a} \hat{g} \hat{f}$

Measure 12 notes (approximate):  
 Treble:  $\hat{b} \hat{a} \hat{g} \hat{f}$   
 Middle:  $\hat{b} \hat{a} \hat{g} \hat{f}$   
 Bass:  $\hat{b} \hat{a} \hat{g} \hat{f}$

pp < ♯ ♯ ♯ ♯ ♯ ♯ ♯ ♯ ♯ ♯

Handwritten musical score for Scherzo for Piano, Op. 10, No. 3 by Franz Liszt. The score is written on a grand staff with treble and bass clefs. It features complex rhythmic patterns, including sixteenth-note runs and chords. Measure numbers 10, 11, and 12 are circled. The notation includes various accidentals (sharps, flats, naturals) and dynamic markings like 'f' and 'ff'. The piece concludes with a double bar line and repeat dots.

*Solo*

13

14

15

16

17

18

19

20

21

CODA

Pedal > *mf*

*f* Pedal

*mf*

Handwritten musical score for Scherzo in F major, BWV 146, measures 17-21. The score is written on a grand staff with piano and bass clefs. Measure 17 shows a piano introduction with a dynamic marking 'p'. Measure 18 is the start of 'Block A', marked with a circled '18' and a dynamic 'p'. Measure 19 continues 'Block A' with a circled '19'. Measure 20 is the end of 'Block A', marked with a circled '20'. Measure 21 is the start of a new section, marked with a circled '21'. The score includes various musical notations such as slurs, accents, and dynamic markings.



Piano Solo

Bl.A

22

Handwritten musical score for measures 22-24. The top staff is for Piano Solo and the bottom staff is for Bassoon (Bl.A). Measure 22 shows piano chords with accents and slurs. Measure 23 shows a long note in the piano solo and a slur in the bassoon. Measure 24 shows piano chords in the piano solo and a long note in the bassoon.

23

R.H.

L.H.

24

Handwritten musical score for measures 23-24. The top staff is for the Right Hand (R.H.) and the bottom staff is for the Left Hand (L.H.). Measure 23 shows a forte (f) chord in the R.H. and a piano (p) chord in the L.H. Measure 24 shows a forte (f) chord in the R.H. and a piano (p) chord in the L.H.

25

Handwritten musical score for measure 25. The top staff shows a forte (f) chord with a slur and a crescendo hairpin. The bottom staff shows a long note with a slur and a crescendo hairpin.

Handwritten musical score for measures 25-26. The system consists of three staves: Treble Clef (top), Bass Clef (middle), and a staff for Bassoon (Bl. A, bottom). Measure 25 contains a melodic line in the treble clef with notes G4, A4, Bb4, A4, G4, Bb4, A4, G4, and a whole note Bb4 in measure 26. The bass clef has a whole note Bb3 in measure 25 and a whole note Bb3 in measure 26. The bassoon staff has a long note with a slur and a breath mark. A circled measure number '26' is at the end of the system.

Handwritten musical score for measures 27-28. The system consists of three staves: Treble Clef (top), Bass Clef (middle), and a staff for Bassoon (Bl. A, bottom). Measure 27 contains a melodic line in the treble clef with notes G4, A4, Bb4, A4, G4, Bb4, A4, G4, and a whole note Bb4 in measure 28. The bass clef has a whole note Bb3 in measure 27 and a whole note Bb3 in measure 28. The bassoon staff has a long note with a slur and a breath mark. A circled measure number '27' is at the end of the system.

Handwritten musical score for two systems. The first system contains measures 27 and 28. The second system contains measures 29 and 30. The score includes treble and bass staves with various musical notations such as notes, rests, dynamics (f, f=), and articulation marks. Measure 28 is circled, and measure 29 is also circled. The text "Block A" is written below the second system.

Handwritten musical score for three staves. The first staff is marked with a circled 31. The second staff has a circled 32. The third staff contains a wavy line and the text "(B1-A)".

Annotations on the right side of the score include:

- A double-headed vertical arrow pointing up and down.
- The text "letzten 4 Takte nochmals" (last 4 measures again).

Handwritten musical score for three staves. The first staff is marked with a circled 33. The second staff contains the text "Bass-tacet". The third staff contains the text "Bass" and rhythmic notation.

Annotations on the right side of the score include:

- A circled 33.
- A circled 34.
- A circled 35.
- A circled 36.
- A circled 37.
- A circled 38.
- A circled 39.
- A circled 40.
- A circled 41.
- A circled 42.
- A circled 43.
- A circled 44.
- A circled 45.
- A circled 46.
- A circled 47.
- A circled 48.
- A circled 49.
- A circled 50.
- A circled 51.
- A circled 52.
- A circled 53.
- A circled 54.
- A circled 55.
- A circled 56.
- A circled 57.
- A circled 58.
- A circled 59.
- A circled 60.
- A circled 61.
- A circled 62.
- A circled 63.
- A circled 64.
- A circled 65.
- A circled 66.
- A circled 67.
- A circled 68.
- A circled 69.
- A circled 70.
- A circled 71.
- A circled 72.
- A circled 73.
- A circled 74.
- A circled 75.
- A circled 76.
- A circled 77.
- A circled 78.
- A circled 79.
- A circled 80.
- A circled 81.
- A circled 82.
- A circled 83.
- A circled 84.
- A circled 85.
- A circled 86.
- A circled 87.
- A circled 88.
- A circled 89.
- A circled 90.
- A circled 91.
- A circled 92.
- A circled 93.
- A circled 94.
- A circled 95.
- A circled 96.
- A circled 97.
- A circled 98.
- A circled 99.
- A circled 100.

Schlager-Solo

34

pp

*Balbt # >*  
*Schlags l. d. d.*

*p*

*mf*

*f*

35

36

*mf*

*f*

37

Handwritten musical score for measures 37-40. It consists of three staves: a treble clef staff with a melodic line, a bass clef staff with chords, and a bass clef staff with a bass line. The key signature has one sharp (F#). Measure 37 starts with a treble clef and a sharp sign. Measure 38 has a sharp sign. Measure 39 has a sharp sign. Measure 40 has a sharp sign. The bass line in measure 40 includes the letters 'F B C D' written vertically.

38

Handwritten musical score for measures 41-44. It consists of three staves: a treble clef staff with chords, a bass clef staff with chords, and a bass clef staff with a bass line. The key signature has one sharp (F#). Measure 41 has a sharp sign. Measure 42 has a sharp sign. Measure 43 has a sharp sign. Measure 44 has a sharp sign. The bass line in measure 44 includes a sharp sign.

30

1. Schlagz. Solo

♩ (16 Takte mit (din. bis pp dann) >

2. Bass Solo

39

40

41

> f > p > p > D.C. Teil 3 al

**CODA** (B)

Handwritten musical score for the CODA section, measures 1-4. The score is written on three staves: Treble, Bass, and Piano. Measure 1 starts with a treble clef and a circled 'C'. The piano part has a circled 'C' and a 'p' dynamic. Measure 2 has a 'p' dynamic. Measure 3 has a circled 'F' above the treble staff. Measure 4 ends with a double bar line and a circled 'B'.

(D)

Handwritten musical score for measures 5-8. The score is written on three staves: Treble, Bass, and Piano. Measure 5 starts with a treble clef and a circled 'C'. The piano part has a circled 'C' and a 'pp' dynamic. Measure 6 has a 'pp' dynamic. Measure 7 has a 'pp' dynamic. Measure 8 ends with a double bar line and a circled 'D'.



breit (frei) *ad lib.*  
(♩) (rubato) (unpa(r))

Pedal (777)

*alleg*

frei

777 (freies Schlagz. Solo)

FINE

Johann  
Scherbaum