

6 Orgel fantasien

1971 - 1977

Adolf Scharbaum

(Eben) Eine See ist

Notenheft Gottes Gnade)

(1)

A handwritten musical score on a single staff. The notation consists of a diagonal line starting from the top left, crossing the staff, and ending at the top right. Below this line, the word "Teil" is written in a cursive hand. To the right of "Teil", the number "1" is enclosed in a circle. The rest of the staff is empty.

Eine See ist Gottes Gnade.

lento (MYSTERIOSO)

Handwritten musical notation for the first system. The treble clef staff contains a melodic line with notes G4, A4, Bb4, C5, Bb4, A4, G4. The bass clef staff contains a single note G3. The lyrics "Ei" and "ne" are written below the notes.

Handwritten musical notation for the second system. The treble clef staff contains a melodic line with notes G4, A4, Bb4, C5, Bb4, A4, G4. The bass clef staff contains a single note G3. The lyrics "See" are written below the notes.

Handwritten musical notation for the third system. The treble clef staff contains a melodic line with notes G4, A4, Bb4, C5, Bb4, A4, G4. The bass clef staff contains a single note G3. The lyrics "ist" and "got" are written below the notes.

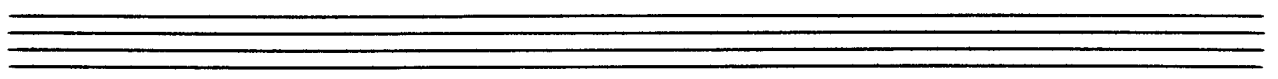
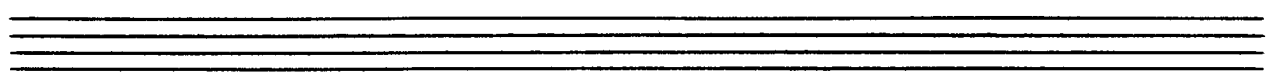
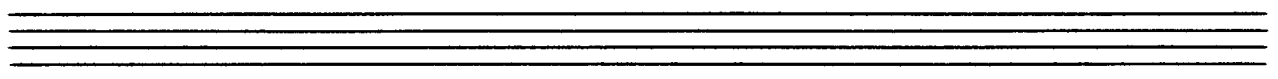
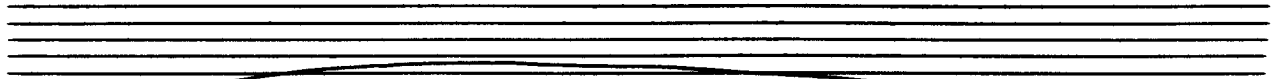
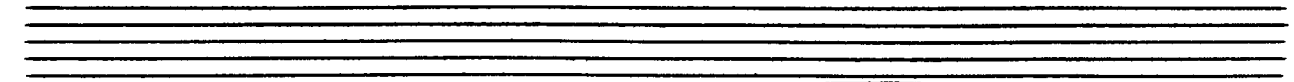
Handwritten musical notation for the first system. The treble clef staff contains a melodic line with notes G4, A4, Bb4, C5, Bb4, A4, G4, and a final chord. The bass clef staff contains a bass line with notes G3, A3, Bb3, C4, Bb3, A3, G3. The lyrics "te si" are written below the bass staff.

Handwritten musical notation for the second system. The treble clef staff contains a melodic line with notes G4, A4, Bb4, C5, Bb4, A4, G4, and a final chord. The bass clef staff contains a bass line with notes G3, A3, Bb3, C4, Bb3, A3, G3. The lyrics "Gna de" are written below the bass staff.

Handwritten musical notation for the third system. The treble clef staff contains a melodic line with notes G4, A4, Bb4, C5, Bb4, A4, G4, and a final chord. The bass clef staff contains a bass line with notes G3, A3, Bb3, C4, Bb3, A3, G3. The lyrics "un er meßlich" are written below the bass staff.

tief und

weit



Handwritten musical notation for the first system. The treble staff contains a melodic line with notes and rests, all under a large slur. The bass staff contains a bass line with notes and rests, also under a large slur. The system is divided into two measures by a vertical bar line.

Handwritten musical notation for the second system. The treble staff contains a melodic line with notes and rests, all under a large slur. The bass staff contains a bass line with notes and rests, also under a large slur. The system is divided into two measures by a vertical bar line.

Handwritten musical notation for the third system. The treble staff contains a melodic line with notes and rests, all under a large slur. The bass staff contains a bass line with notes and rests, also under a large slur. The system is divided into two measures by a vertical bar line.

Four empty musical staves, consisting of two treble clef staves and two bass clef staves, arranged in two pairs.

Handwritten musical notation for the first system. The top staff is a treble clef with a melodic line consisting of a half note G4, a quarter note A4, a quarter note B4, and a quarter note C5, all under a slur. The bottom staff is a bass clef with chords: a half note G2, a quarter note A2, a quarter note B2, and a quarter note C3, all under a slur. There are additional notes and slurs below the bass staff.

Handwritten musical notation for the second system. The top staff is a treble clef with a melodic line consisting of a half note G4, a quarter note A4, a quarter note B4, and a quarter note C5, all under a slur. The bottom staff is a bass clef with chords: a half note G2, a quarter note A2, a quarter note B2, and a quarter note C3, all under a slur. There are additional notes and slurs below the bass staff.

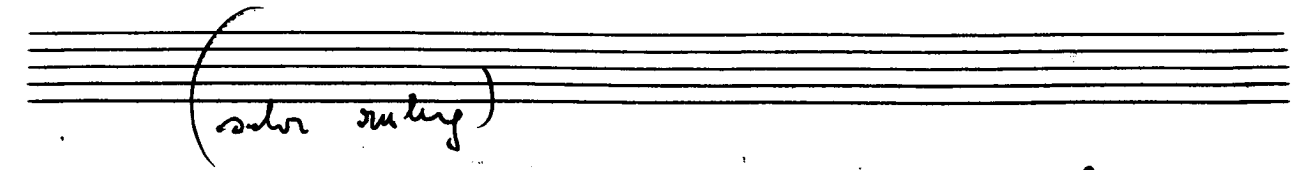
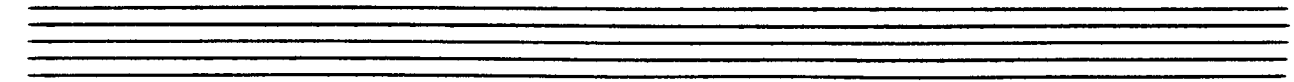
Handwritten musical notation for the third system. The top staff is a treble clef with a melodic line consisting of a half note G4, a quarter note A4, a quarter note B4, and a quarter note C5, all under a slur. The bottom staff is a bass clef with chords: a half note G2, a quarter note A2, a quarter note B2, and a quarter note C3, all under a slur. There are additional notes and slurs below the bass staff.

Handwritten musical notation for the first system. The top staff is a treble clef with a single note melody. The bottom staff is a piano accompaniment with chords and a bass line. The notation is in a simple, handwritten style.

Handwritten musical notation for the second system. The top staff is a treble clef with a single note melody. The bottom staff is a piano accompaniment with chords and a bass line. The notation is in a simple, handwritten style.

Handwritten musical notation for the third system. The top staff is a treble clef with a single note melody. The bottom staff is a piano accompaniment with chords and a bass line. The notation is in a simple, handwritten style.

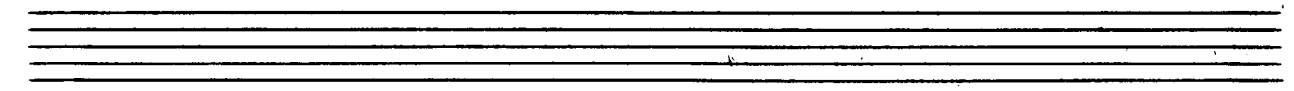
Four empty musical staves at the bottom of the page, arranged in two pairs of two staves each.



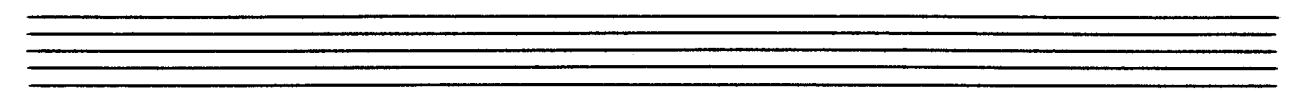
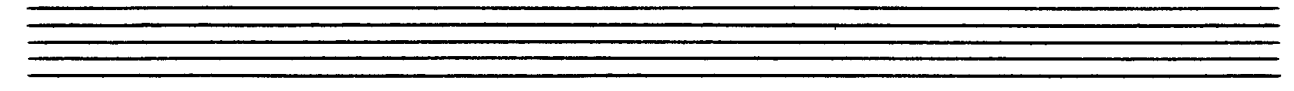
Handwritten musical notation for the first system. The treble clef staff contains a half note G4, a quarter note A4, and a half note B4, all under a slur. The bass clef staff contains a whole note G3, a whole note A3, and a whole note B3, also under a slur. There are handwritten annotations: a '3' with a tilde symbol below the first measure of the treble staff, and 'b9' and '9' below the first and second measures of the bass staff respectively.



Handwritten musical notation for the second system. The treble clef staff contains a half note G4, a quarter note A4, and a half note B4, all under a slur. The bass clef staff contains a whole note G3, a whole note A3, and a whole note B3, also under a slur. There are handwritten annotations: a '3' with a tilde symbol below the first measure of the treble staff, and 'b9' and '9' below the first and second measures of the bass staff respectively.



Handwritten musical notation for the third system. The treble clef staff contains a half note G4 with a sharp sign, a quarter note A4, and a half note B4, all under a slur. The bass clef staff contains a whole note G3 with a sharp sign, a whole note A3, and a whole note B3, also under a slur. There are handwritten annotations: a '3' with a tilde symbol below the first measure of the treble staff, and 'b9' and '9' below the first and second measures of the bass staff respectively.



Andante

Handwritten musical notation for the first system. The treble clef staff contains a melodic line with notes G4, A4, Bb4, C5, Bb4, A4, G4, and a final Bb4. A circled '1' is written below the first measure. The bass clef staff contains a bass line with notes G2, A2, Bb2, C3, Bb2, A2, G2, and a final Bb2. A large slur covers the first two measures of both staves.

Handwritten musical notation for the second system. The treble clef staff continues the melodic line with notes G4, A4, Bb4, C5, Bb4, A4, G4, and a final Bb4. The bass clef staff continues the bass line with notes G2, A2, Bb2, C3, Bb2, A2, G2, and a final Bb2. A large slur covers the first two measures of both staves.

Handwritten musical notation for the third system. The treble clef staff contains a melodic line with notes G4, A4, Bb4, C5, Bb4, A4, G4, and a final Bb4. The bass clef staff contains a bass line with notes G2, A2, Bb2, C3, Bb2, A2, G2, and a final Bb2. A 3/4 time signature is written in the first measure of the treble staff. A large slur covers the first two measures of both staves.

Handwritten musical notation for the first system. The treble clef staff contains two measures of music. The first measure has a quarter rest followed by a quarter note G4 with a flat, a quarter note A4 with a flat, a quarter note B4 with a flat, and a quarter note C5 with a flat. The second measure has a quarter rest followed by a quarter note B4 with a flat, a quarter note A4 with a flat, a quarter note G4 with a flat, and a quarter note F4 with a flat. The bass clef staff contains two measures. The first measure has a quarter note G3 with a flat and a quarter note A3 with a flat. The second measure has a quarter note B3 with a flat and a quarter note C4 with a flat. Slurs are present over the notes in both staves.

Handwritten musical notation for the second system. The treble clef staff contains two measures. The first measure has a quarter note G4 with a flat and a quarter note A4 with a flat. The second measure has a quarter note B4 with a flat and a quarter note C5 with a flat. The bass clef staff contains two measures. The first measure has a quarter note G4 with a flat, a quarter note A4 with a flat, a quarter note B4 with a flat, and a quarter note C5 with a flat. The second measure has a quarter note B4 with a flat, a quarter note A4 with a flat, a quarter note G4 with a flat, and a quarter note F4 with a flat. Slurs are present over the notes in both staves.

Handwritten musical notation for the third system. The treble clef staff contains two measures. The first measure has a quarter note G4 with a flat and a quarter note A4 with a flat. The second measure has a quarter note B4 with a flat and a quarter note C5 with a flat. The bass clef staff contains two measures. The first measure has a quarter note G4 with a flat, a quarter note A4 with a flat, a quarter note B4 with a flat, and a quarter note C5 with a flat. The second measure has a quarter note B4 with a flat and a quarter note A4 with a flat. Slurs are present over the notes in both staves.

(frei) recit.

accel.

Handwritten musical score system 1. The system consists of two staves. Above the first staff, the word "euet." is written. Above the second staff, the word "st" is circled. The music features a melodic line in the right hand with a slur over the first two measures and a fermata over the last two. The left hand has a whole rest in the first measure and a whole note in the second. Dynamic markings include "f" and "(b)". A circled "b" is written above the second measure of the right hand.

Handwritten musical score system 2. The system consists of two staves. Above the first staff, the word "buet (frei)" is written. Above the second staff, the word "(romant)" is written. The music features a melodic line in the right hand with a slur over the last two measures. The left hand has a whole rest in the first measure and a whole note in the second. Dynamic markings include "ff" in a circle. There are various handwritten annotations and symbols throughout the system.

Handwritten musical score system 3. The system consists of two staves. Above the first staff, the word "(ganz)" is written. The music features a melodic line in the right hand with a slur over the last two measures. The left hand has a whole rest in the first measure and a whole note in the second. There are various handwritten annotations and symbols throughout the system.

Four empty musical staves, each consisting of a grand staff (treble and bass clefs).

Handwritten musical notation for the first system, featuring a grand staff with treble and bass clefs. A long slur spans across the top of the system. The notation includes various notes, rests, and accidentals (sharps and naturals).

Handwritten musical notation for the second system, continuing the piece with a grand staff and a slur over the upper staff.

Handwritten musical notation for the third system, including the word "accel." with an arrow pointing right and a slur over the upper staff.

Four empty grand staves for musical notation.

sehr breit (ausklingend)

mit

leuto

Handwritten musical notation on a grand staff. The left hand has a circled 'III' below it. The right hand has some scribbles at the beginning.

Handwritten musical notation on a grand staff, continuing the piece.

Handwritten musical notation on a grand staff, featuring a circled 'II' below the left hand.

sehr ruhig (schüchtern)

Handwritten musical notation for the first system. The treble staff contains a series of notes: a whole note G4 with a sharp sign, followed by quarter notes G4, A4, B4, A4, G4, and F4. The bass staff contains a series of notes: a whole note G3 with a sharp sign, followed by quarter notes G3, A3, B3, A3, G3, and F3. A large slur covers the entire system.

Handwritten musical notation for the second system. The treble staff contains a series of notes: a whole note G4, followed by quarter notes A4, B4, A4, G4, and F4. The bass staff contains a series of notes: a whole note G3 with a sharp sign, followed by quarter notes G3, A3, B3, A3, G3, and F3. A large slur covers the entire system.

Handwritten musical notation for the third system. The treble staff contains a series of notes: a whole note G4, followed by quarter notes A4, B4, and a whole note G4. The bass staff contains a series of notes: a whole note G3 with a sharp sign, followed by quarter notes G3, A3, and a whole note G3. A large slur covers the entire system. The text "(poco rit)" is written above the treble staff.

Four empty musical staves, consisting of two treble clefs and two bass clefs, arranged in two pairs.

(Lento)

Handwritten musical notation for the first system. The treble clef staff contains a half note G4, a quarter note A4, a quarter note B4, and a quarter note C5. The bass clef staff contains a half note G3, a quarter note A3, a quarter note B3, and a quarter note C4. A long slur covers the entire system.

Handwritten musical notation for the second system. The treble clef staff contains a half note G4, a quarter note A4, a quarter note B4, and a quarter note C5. The bass clef staff contains a half note G3, a quarter note A3, a quarter note B3, and a quarter note C4. A long slur covers the entire system.

Handwritten musical notation for the third system. The treble clef staff contains a half note G4, a quarter note A4, a quarter note B4, and a quarter note C5. The bass clef staff contains a half note G3, a quarter note A3, a quarter note B3, and a quarter note C4. A long slur covers the entire system.

Handwritten musical notation for the fourth system. The treble clef staff contains a half note G4, a quarter note A4, a quarter note B4, and a quarter note C5. The bass clef staff contains a half note G3, a quarter note A3, a quarter note B3, and a quarter note C4. A long slur covers the entire system.

f *frei* *steigern* (*cresc. + cres.*) bis (*Allegro agitato*)

Organo agitato (sola voce)

Handwritten musical notation for the first system. The treble clef staff contains a series of chords, with a circled '31' written below the first chord. The bass clef staff contains a melodic line with several accidentals (sharps).

Handwritten musical notation for the second system. The treble clef staff contains a series of chords, with a circled '32' written below the first chord. The bass clef staff contains a melodic line with several accidentals (sharps).

Handwritten musical notation for the third system. The treble clef staff contains a series of chords, with a circled '33' written below the first chord. The bass clef staff contains a melodic line with several accidentals (flats).

Handwritten musical notation for the fourth system. The treble clef staff contains a series of chords, with a circled '34' written below the first chord. The bass clef staff contains a melodic line with several accidentals (flats).

Handwritten musical notation for the first system. The treble clef part contains four chords: G4, A4, B4, and C5. The bass clef part contains a melodic line with notes: G3, A3, B3, C4, D4, E4, F4, G4, A4, B4, C5.

Handwritten musical notation for the second system. The treble clef part contains four chords: G4, A4, B4, and C5. The bass clef part contains a melodic line with notes: G3, A3, B3, C4, D4, E4, F4, G4, A4, B4, C5.

Handwritten musical notation for the third system. The treble clef part contains four chords: G4, A4, B4, and C5. The bass clef part contains a melodic line with notes: G3, A3, B3, C4, D4, E4, F4, G4, A4, B4, C5.

Handwritten musical notation for the fourth system. The treble clef part contains four chords: G4, A4, B4, and C5. The bass clef part contains a melodic line with notes: G3, A3, B3, C4, D4, E4, F4, G4, A4, B4, C5.

Handwritten musical notation for the first system, featuring a treble clef, a key signature of one flat, and a common time signature. The right hand part consists of a series of chords, while the left hand part is a melodic line with a slur over it.

Handwritten musical notation for the second system, similar to the first but with a key signature change to two flats. The right hand part has chords, and the left hand part has a melodic line with a slur.

Handwritten musical notation for the third system, continuing the piece with a key signature of two flats. The right hand part has chords, and the left hand part has a melodic line with a slur.

(Zweite poco rit.)

Handwritten musical notation for the fourth system, concluding the piece with a key signature of two flats. The right hand part has chords, and the left hand part has a melodic line with a slur.

meno

allmählich langsamer (rit)

Handwritten musical notation for the first system. It consists of a treble staff and a bass staff. The treble staff contains a melodic line with eighth notes and quarter notes, starting on a G4 and moving upwards. The bass staff contains a simple accompaniment with two notes per measure. A large slur covers the entire system.

Handwritten musical notation for the second system. The treble staff continues the melodic line, now with a key signature change to one sharp (F#). The bass staff accompaniment remains simple. A large slur covers the system.

Handwritten musical notation for the third system. The treble staff continues the melodic line, now with a key signature change to two sharps (F# and C#). The bass staff accompaniment remains simple. A large slur covers the system.

Handwritten musical notation for the fourth system. The treble staff continues the melodic line, now with a key signature change to three sharps (F#, C#, and G#). The bass staff accompaniment remains simple. A large slur covers the system.

27

Handwritten text: "Kadenz")

Handwritten musical score for the first system. It consists of a treble clef staff and a bass clef staff. The treble staff contains notes with various accidentals (flats, sharps, naturals) and dynamic markings like 'ff'. The bass staff contains notes with accidentals and dynamic markings like 'ff'. There are slurs and phrasing marks throughout the system.

Handwritten musical score for the second system. It consists of a treble clef staff and a bass clef staff. The treble staff contains notes with various accidentals and dynamic markings like 'ff'. The bass staff contains notes with accidentals and dynamic markings like 'ff'. There are slurs and phrasing marks throughout the system.

Handwritten musical score for the third system. It consists of a treble clef staff and a bass clef staff. The notation is very dense and scribbled out, with many overlapping lines and marks, suggesting a complex or improvised passage. There are some rectangular boxes drawn around parts of the notation.

Ad lib. Breit

The first system of the handwritten musical score consists of four staves. The top staff is a vocal line with a long, sweeping slur over it. The second and third staves are for the piano accompaniment, with the right hand on the second staff and the left hand on the third. The bottom staff is a bass line. The music is written in a simple, sketchy style with various notes, rests, and accidentals.

The second system of the handwritten musical score continues the composition with four staves. It follows the same layout as the first system, with a vocal line at the top and piano accompaniment below. The notation is consistent with the first system, showing a continuation of the melodic and harmonic ideas.

Four empty musical staves are provided at the bottom of the page, intended for further musical notation or practice.

(gut)

Handwritten musical notation for the first system. It consists of three staves. The top staff has a treble clef and a common time signature. Above the staff, there are handwritten notes: a circle with a slash, a flat symbol, a sharp symbol, and a G with a sharp sign. The staff contains several notes, some with accidentals, and a large slur covering the first two measures. The middle and bottom staves contain additional notes and accidentals, with some notes marked with 'L' and 'H'.

Handwritten musical notation for the second system. It consists of three staves. The top staff has a treble clef and a common time signature. Above the staff, there are handwritten notes: a circle with a slash, a flat symbol, a sharp symbol, and a G with a sharp sign. The staff contains several notes, some with accidentals, and a large slur covering the first two measures. The middle and bottom staves contain additional notes and accidentals, with some notes marked with 'L' and 'H'.

Handwritten musical notation for the third system. It consists of three staves. The top staff has a treble clef and a common time signature. Above the staff, there are handwritten notes: a circle with a slash, a flat symbol, a sharp symbol, and a G with a sharp sign. The staff contains several notes, some with accidentals, and a large slur covering the first two measures. The middle and bottom staves contain additional notes and accidentals, with some notes marked with 'L' and 'H'.

Teil ②

Eine See ist
Gottes Gnade

Improvisationen
für Orgel

1971 Adolf Lohrer

ruhig fließend — (aber sehr schlicht + ruhig)

Handwritten musical notation for the first system. The treble clef part contains a melodic line with notes: G4, A4, B4, C5, B4, A4, G4. The bass clef part contains a chordal accompaniment with notes: G2, B2, D3, F3, G3, A3, B3, C4, D4, E4, F4, G4. A circled 'p' is written above the bass clef. A slur covers the entire system.

Handwritten musical notation for the second system. The treble clef part contains a melodic line with notes: G4, A4, B4, C5, B4, A4, G4. The bass clef part contains a chordal accompaniment with notes: G2, B2, D3, F3, G3, A3, B3, C4, D4, E4, F4, G4. A slur covers the entire system.

Handwritten musical notation for the third system. The treble clef part contains a melodic line with notes: G4, A4, B4, C5, B4, A4, G4. The bass clef part contains a chordal accompaniment with notes: G2, B2, D3, F3, G3, A3, B3, C4, D4, E4, F4, G4. A slur covers the entire system.

Handwritten musical notation for the first system. The treble clef is on the left. The key signature has one flat (B-flat). The time signature is 2/4. The melody in the treble clef consists of quarter notes with stems pointing down. The bass line features a whole note chord in the first measure and a half note chord in the second measure, with a fermata over the second measure.

Handwritten musical notation for the second system. The treble clef is on the left. The key signature has one sharp (F-sharp). The time signature is 2/4. The melody in the treble clef consists of quarter notes with stems pointing down. The bass line features a whole note chord in the first measure and a half note chord in the second measure, with a fermata over the second measure.

Handwritten musical notation for the third system. The treble clef is on the left. The key signature has one sharp (F-sharp). The time signature is 2/4. The melody in the treble clef consists of quarter notes with stems pointing down. The bass line features a whole note chord in the first measure and a half note chord in the second measure, with a fermata over the second measure.

Handwritten musical notation for the first system. The treble clef staff contains a series of notes with accidentals (sharps and naturals) and a fermata over the final note. The bass clef staff contains a complex rhythmic pattern with many beamed notes and accidentals. A large slur covers the entire system.

Handwritten musical notation for the second system. The treble clef staff contains a series of notes with accidentals and a fermata over the final note. The bass clef staff contains a complex rhythmic pattern with many beamed notes and accidentals. A large slur covers the entire system.

Handwritten musical notation for the third system. The treble clef staff contains a series of notes with accidentals and a fermata over the final note. The bass clef staff contains a complex rhythmic pattern with many beamed notes and accidentals. A large slur covers the entire system.

Handwritten musical notation for the first system, featuring a treble clef, a key signature of one flat, and a 3/4 time signature. The melody consists of quarter notes, and the bass line features eighth notes with various accidentals. A large slur covers the entire system.

Handwritten musical notation for the second system, continuing the piece with similar notation to the first system, including a treble clef and a key signature of one flat.

Handwritten musical notation for the third system, featuring a treble clef and a key signature of one flat. The melody is mostly quarter notes, and the bass line includes a circled measure with a sharp sign and a final measure with a tremolo symbol.

(rit)

Handwritten musical notation for the first system. It consists of two staves. The upper staff is in treble clef and contains several notes, some with accidentals (flats and naturals). The lower staff is in bass clef and contains notes with accidentals, including a sharp sign. A large, sweeping slur is drawn over both staves, indicating a long phrase.

Largo

Handwritten musical notation for the second system. It consists of two staves. The upper staff is in treble clef and contains notes with accidentals. The lower staff is in bass clef and contains notes with accidentals, including a sharp sign. A large slur is drawn over the upper staff. A circled 'pp' (pianissimo) dynamic marking is present in the lower staff. The time signature is 4/4.

Handwritten musical notation for the third system. It consists of two staves. The upper staff is in treble clef and contains notes with accidentals. The lower staff is in bass clef and contains notes with accidentals, including a sharp sign. A large slur is drawn over the upper staff.

Handwritten musical notation on two staves. The top staff has a treble clef and a 4/4 time signature. It contains a whole note chord with a sharp sign and a 4/4 time signature. The bottom staff has a bass clef and contains a whole note chord with a sharp sign and a 4/4 time signature. A large slur connects the two staves across the first two measures.

Handwritten musical notation on two staves. The top staff has a treble clef and contains a whole note chord with a sharp sign, followed by a series of notes and chords. A circled word "gut" is written above the first measure. The bottom staff has a bass clef and contains a whole note chord with a sharp sign, followed by a series of notes and chords. A large slur connects the two staves across the first two measures.

Mysterioso

Handwritten musical notation on two staves. The top staff has a treble clef and contains a series of chords and notes. The bottom staff has a bass clef and contains a series of chords and notes. The word "ppp" is written on the left side of the first measure. A large slur connects the two staves across the first three measures.

Andante (fließend)

Handwritten musical notation for the first system. The treble clef staff contains a melodic line with notes G4, A4, B4, C5, D5, E5, F5, G5, with a flat (b) above the first measure. The bass clef staff contains a bass line with notes G3, A3, B3, C4, D4, E4, F4, G4, with a sharp (#) below the first measure. A slur covers the first measure of both staves. The second measure of the treble staff has a quarter note G5 with a flat (b) above it. The second measure of the bass staff has a quarter note G4 with a sharp (#) below it, followed by a slur over notes A4, B4, C5, D5.

Handwritten musical notation for the second system. The treble clef staff continues the melodic line with notes G5, A5, B5, C6, D6, E6, F6, G6, with a flat (b) above the first measure. The bass clef staff continues the bass line with notes G4, A4, B4, C5, D5, E5, F5, G5, with a flat (b) below the first measure. A slur covers the first measure of both staves. The second measure of the treble staff has a quarter note G6 with a flat (b) above it. The second measure of the bass staff has a quarter note G5 with a sharp (#) below it, followed by a slur over notes A5, B5, C6, D6.

Handwritten musical notation for the third system. The treble clef staff continues the melodic line with notes G6, A6, B6, C7, D7, E7, F7, G7, with a flat (b) above the first measure. The bass clef staff continues the bass line with notes G5, A5, B5, C6, D6, E6, F6, G6, with a sharp (#) below the first measure. A slur covers the first measure of both staves. The second measure of the treble staff has a quarter note G7 with a flat (b) above it. The second measure of the bass staff has a quarter note G6 with a sharp (#) below it, followed by a slur over notes A6, B6, C7, D7. The third measure of the bass staff has a quarter note G7 with a flat (b) below it, followed by a slur over notes A7, B7, C8, D8.

Handwritten musical notation for the first system. It consists of two staves: a treble clef staff on top and a bass clef staff on the bottom. The treble staff contains a melodic line with notes G4, A4, B4, C5, D5, E5, F5, G5, and a quarter rest. The bass staff contains a bass line with notes G3, A3, B3, C4, D4, E4, F4, G4, and a quarter rest. A slur covers the first two measures of both staves. There are various accidentals (sharps, naturals, flats) and some handwritten markings.

Handwritten musical notation for the second system. It consists of two staves: a treble clef staff on top and a bass clef staff on the bottom. The treble staff contains a melodic line with notes G4, A4, B4, C5, D5, E5, F5, G5, and a quarter rest. The bass staff contains a bass line with notes G3, A3, B3, C4, D4, E4, F4, G4, and a quarter rest. A slur covers the first two measures of both staves. There are various accidentals (sharps, naturals, flats) and some handwritten markings.

Handwritten musical notation for the third system. It consists of two staves: a treble clef staff on top and a bass clef staff on the bottom. The treble staff contains a melodic line with notes G4, A4, B4, C5, D5, E5, F5, G5, and a quarter rest. The bass staff contains a bass line with notes G3, A3, B3, C4, D4, E4, F4, G4, and a quarter rest. A slur covers the first two measures of both staves. There are various accidentals (sharps, naturals, flats) and some handwritten markings.

Handwritten musical notation for the first system. The treble staff contains a sequence of notes: G4, A4, B4, C5, B4, A4, G4, F#4, E4, D4. The bass staff contains notes: G3, A3, B3, C4, D4, E4, F#4, G4, A4, B4. A slur covers the first two measures. The second measure has a 'G4' written below the staff. The third measure has notes: G4, A4, B4, C5, B4, A4, G4, F#4, E4, D4. A slur covers the last two notes of the third measure.

Handwritten musical notation for the second system. The treble staff contains notes: G4, A4, B4, C5, B4, A4, G4, F#4, E4, D4. The bass staff contains notes: G3, A3, B3, C4, D4, E4, F#4, G4, A4, B4. A slur covers the first two measures. The second measure has a 'G4' written below the staff. The third measure has notes: G4, A4, B4, C5, B4, A4, G4, F#4, E4, D4. A slur covers the last two notes of the third measure.

Handwritten musical notation for the third system. The treble staff contains notes: G4, A4, B4, C5, B4, A4, G4, F#4, E4, D4. The bass staff contains notes: G3, A3, B3, C4, D4, E4, F#4, G4, A4, B4. A slur covers the first two measures. The second measure has a 'G4' written below the staff. The third measure has notes: G4, A4, B4, C5, B4, A4, G4, F#4, E4, D4. A slur covers the last two notes of the third measure. A circled '5' is written above the note G4 in the third measure.

grascher werden

(Zurück) tempo (rit)

(frei) ad lib

pp

(Tempo steigern)

accel.

rasche $\frac{3}{4}$

The first system of handwritten musical notation consists of two staves. The upper staff is in treble clef and the lower staff is in bass clef. A circled 'f' is written in the lower staff. The time signature is 3/4. The music begins with a quarter note on G4 in the treble and a quarter note on G2 in the bass. The treble staff contains a melodic line with various note values and rests, while the bass staff provides a harmonic accompaniment with chords and single notes.

The second system continues the piece with two staves. A long slur is drawn over the treble staff, encompassing several measures of music. The notation includes various note values and rests, with some notes beamed together. The bass staff continues with its accompaniment.

The third system continues the piece with two staves. Similar to the second system, a long slur is drawn over the treble staff. The notation includes various note values and rests, with some notes beamed together. The bass staff continues with its accompaniment.

Handwritten musical notation for the first system, featuring a treble and bass staff with a large slur and various notes and rests.

Handwritten musical notation for the second system, featuring a treble and bass staff with a large slur and various notes and rests.

Handwritten musical notation for the third system, featuring a treble and bass staff with a large slur and various notes and rests.

Handwritten musical notation for the fourth system, featuring a treble and bass staff with a large slur and various notes and rests.

Handwritten musical notation for the first system, featuring two staves with complex melodic lines and a large slur.

Handwritten musical notation for the second system, showing two staves with melodic development and a large slur.

Handwritten musical notation for the third system, including a circled "Di" in the lower staff.

Handwritten text "Gloria" with an arrow pointing to the right.

Handwritten musical notation for the fourth system, showing two staves with melodic lines.

prester ————— got

(frei / bewegt)

#

a
scrupulos

Handwritten musical score for the first system. The treble clef part contains a series of chords with accidentals (flats and naturals) and a complex rhythmic pattern. The bass clef part has a few notes and rests. There are some handwritten annotations and symbols on the right side of the system.

Handwritten musical score for the second system. It continues the piece with similar notation and accidentals. The treble clef part has a series of chords and notes, while the bass clef part has a few notes and rests.

sehr bewegt

Handwritten musical score for the third system, marked *sehr bewegt*. The treble clef part has a series of notes and rests, while the bass clef part has a few notes and rests. There is a circled '7' in the bass clef part.

Handwritten musical score for the fourth system. It continues the piece with similar notation and accidentals. The treble clef part has a series of notes and rests, while the bass clef part has a few notes and rests.

Handwritten musical notation for the first system. The treble staff contains a melodic line with a slur over the first four notes, followed by two notes with accents. The bass staff contains a bass line with a slur over the first two notes and a fermata over the last note.

Handwritten musical notation for the second system, similar to the first system. The treble staff contains a melodic line with a slur over the first four notes, followed by two notes with accents. The bass staff contains a bass line with a slur over the first two notes and a fermata over the last note.

a
more

Handwritten musical notation for the third system. The treble staff contains a melodic line with a slur over the first four notes, followed by two notes with accents. The bass staff contains a bass line with a slur over the first two notes and a fermata over the last note.

Handwritten musical notation for the fourth system. The treble staff contains a melodic line with a slur over the first four notes, followed by two notes with accents. The bass staff contains a bass line with a slur over the first two notes and a fermata over the last note.

Handwritten musical notation for the first system. The treble clef staff contains a melodic line with a slur over the first four notes. The bass clef staff contains a bass line with a slur over the first four notes. The system is divided into three measures.

Handwritten musical notation for the second system. The treble clef staff contains a melodic line with a slur over the first four notes. The bass clef staff contains a bass line with a slur over the first four notes. The system is divided into three measures.

Handwritten musical notation for the third system. The treble clef staff contains a melodic line with a slur over the first four notes. The bass clef staff contains a bass line with a slur over the first four notes. The system is divided into three measures.

Handwritten musical notation for the fourth system. The treble clef staff contains a melodic line with a slur over the first four notes. The bass clef staff contains a bass line with a slur over the first four notes. The system is divided into three measures.

Gute,

Handwritten musical notation for the first system. The treble clef staff contains a melodic line with a slur over the first four notes. The bass clef staff contains a rhythmic accompaniment with chords and slurs.

Handwritten musical notation for the second system. The treble clef staff continues the melodic line with a slur. The bass clef staff continues the accompaniment with chords and slurs.

Handwritten musical notation for the third system. The treble clef staff continues the melodic line. The bass clef staff continues the accompaniment with chords and slurs.

Handwritten musical notation for the fourth system. The treble clef staff continues the melodic line. The bass clef staff continues the accompaniment. The word "Crist" is written above the staff. The system ends with a double bar line.

breite Achtel

Handwritten musical notation for the first system. The top staff is a treble clef with a 6/8 time signature and a series of eighth notes with various accidentals. The bottom staff is a bass clef with a 6/8 time signature, a circled sharp sign, and chordal figures. A circled "rit" is written above the second measure of the bass staff.

Handwritten musical notation for the second system, similar to the first system with treble and bass staves and a circled "rit" marking.

(frei) appassionata

Handwritten musical notation for the third system, featuring a treble clef staff with a complex, rapid melodic line and a bass clef staff with accompaniment.

breit

Handwritten musical notation for the fourth system, showing a treble clef staff with a slow, wide melodic line and a bass clef staff with accompaniment.

bewegt

breit

rasch

breit *lunga*

27

Adagio (sempre crescendo) (auf 8 Schritte)

Handwritten musical notation for the first system, featuring treble and bass staves with notes and a circled 'pp' dynamic marking.

Handwritten musical notation for the second system, featuring treble and bass staves with notes.

Handwritten musical notation for the third system, featuring treble, middle, and bass staves with notes and dynamic markings like 'p' and 'f'.

Gut

Handwritten musical notation for the first system. It consists of three staves: two for the treble clef and one for the bass clef. The treble staves contain melodic lines with notes, accidentals (flats and sharps), and a circled 'f' dynamic marking. The bass staff contains a rhythmic accompaniment with vertical stems and dots.

Handwritten musical notation for the second system. It consists of three staves: two for the treble clef and one for the bass clef. The treble staves contain melodic lines with notes, accidentals, and a circled 'ff' dynamic marking. The bass staff contains a rhythmic accompaniment with vertical stems and dots.

oder breit (Viertel) (voll weick)

Handwritten musical notation for the third system. It consists of three staves: two for the treble clef and one for the bass clef. The treble staves contain melodic lines with notes, accidentals, and dynamic markings like 'ff'. The bass staff contains a rhythmic accompaniment with vertical stems and dots.

Handwritten musical score for the first system. It consists of a treble clef staff and a bass clef staff. The treble staff contains several measures of music with notes, rests, and dynamic markings like *ff*. The bass staff contains notes and rests. The word "LUNGA" is written in the right-hand margin of the bass staff.

Handwritten musical score for the second system. It continues with a treble clef staff and a bass clef staff. The notation includes various notes, rests, and dynamic markings. The word "LUNGA" is written in the right-hand margin of the bass staff.

Handwritten musical score for the third system. It features a treble clef staff and a bass clef staff. The word "gr. rit." is circled in the treble staff. The word "Lunga" is written in the right-hand margin of the treble staff. The word "strahlend." is written in the right-hand margin of the bass staff. The system ends with a double bar line and some scribbled-out notes.

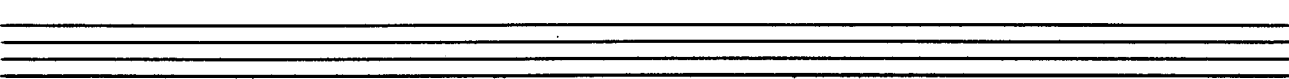
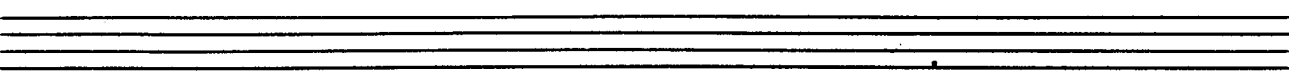
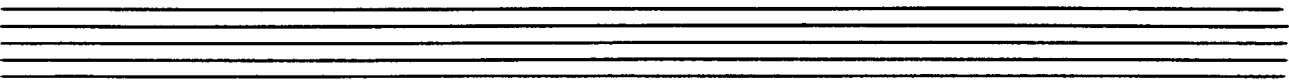
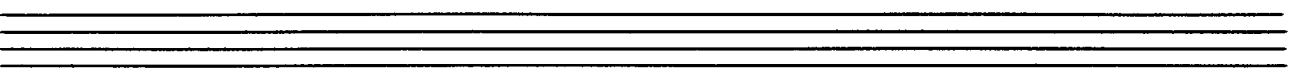
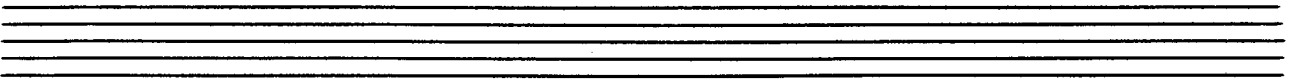
Teil ③

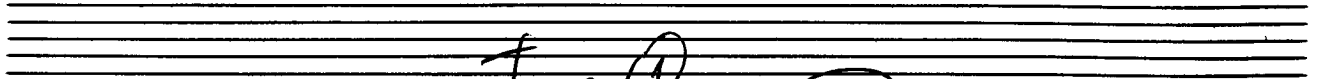
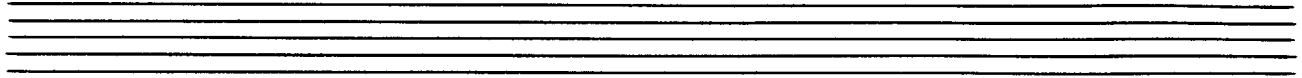
ruhig (ad libitum)

Handwritten musical notation for the first system. It begins with a treble clef and a 4/4 time signature. A piano (*pp*) dynamic marking is present. The notation consists of a series of notes with various accidentals (sharps and flats) and a long slur over the entire phrase.

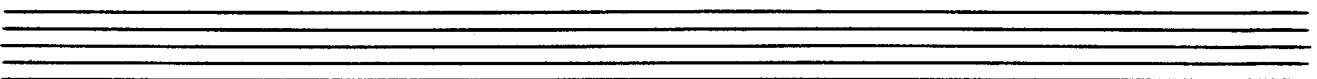
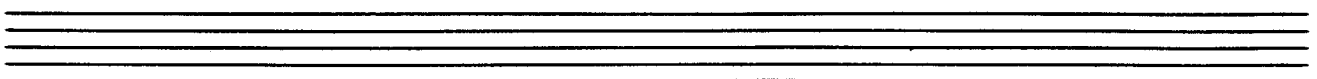
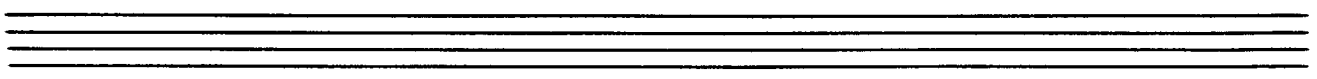
Handwritten musical notation for the second system. It continues the piece with treble and bass clefs, notes, and accidentals.

Handwritten musical notation for the third system. It features treble and bass clefs, notes, and accidentals.





Tempo $\textcircled{1}$



Handwritten musical notation for the first system. The treble staff contains a melodic line with a long slur over two measures. The bass staff has a whole rest in the first measure, followed by a half note with a sharp sign in the second measure. A circled 'p' is written in the first measure of the bass staff.

Handwritten musical notation for the second system. The treble staff continues the melodic line with a slur. The bass staff has a whole rest in the first measure, followed by a half note with a sharp sign in the second measure. A circled 'p' is written in the first measure of the bass staff. Below the bass staff, there are handwritten notes: 'o', 'o', '3', '3', and 'f'.

Handwritten musical notation for the third system. The treble staff has a whole note in the first measure, followed by a half note in the second measure, and a quarter note in the third measure. The bass staff has a whole rest in the first measure, followed by a half note with a sharp sign in the second measure, and a quarter note with a sharp sign in the third measure. A circled 'p' is written in the first measure of the bass staff.

6

Handwritten musical notation for the first system. The top staff is in treble clef and contains a melodic line with a long slur over four measures. The bottom staff is in bass clef and contains a more active accompaniment line with eighth and sixteenth notes, also featuring a long slur. The system is enclosed in a large bracket.

Handwritten musical notation for the second system. The top staff is in treble clef and contains a melodic line with a long slur over four measures. The bottom staff is in bass clef and contains a more active accompaniment line with eighth and sixteenth notes, also featuring a long slur. The system is enclosed in a large bracket.

Handwritten musical notation for the third system. The top staff is in treble clef and contains a melodic line with a long slur over four measures. The bottom staff is in bass clef and contains a more active accompaniment line with eighth and sixteenth notes, also featuring a long slur. The system is enclosed in a large bracket.

Four empty musical staves at the bottom of the page, arranged in two pairs of two staves each.

(poco rit)

(poco surt)

Handwritten musical notation for the first system. The treble clef staff contains a whole note chord with a sharp sign and a circled '8'. The bass clef staff contains a series of notes with various accidentals, including a sharp sign and a circled '8'.

appassionata

Handwritten musical notation for the second system. The treble clef staff has a circled '12' and a circled '8'. The bass clef staff contains notes with various accidentals, including a sharp sign and a circled '8'.

Handwritten musical notation for the third system. The treble clef staff has a circled 'A'. The bass clef staff contains notes with various accidentals, including a sharp sign and a circled '8'.

Handwritten musical notation for the first system. The treble clef staff contains a melodic line with a slur over two measures. The notes are G4, A4, Bb4, and C5. The bass clef staff contains a series of chords with various accidentals: G#4, A4, Bb4, C5, D5, E5, F#5, G#5, A5, Bb5, C6, D6, E6, F#6, G#6, A6, Bb6, C7, D7, E7, F#7, G#7, A7, Bb7, C8, D8, E8, F#8, G#8, A8, Bb8, C9, D9, E9, F#9, G#9, A9, Bb9, C10, D10, E10, F#10, G#10, A10, Bb10, C11, D11, E11, F#11, G#11, A11, Bb11, C12, D12, E12, F#12, G#12, A12, Bb12, C13, D13, E13, F#13, G#13, A13, Bb13, C14, D14, E14, F#14, G#14, A14, Bb14, C15, D15, E15, F#15, G#15, A15, Bb15, C16, D16, E16, F#16, G#16, A16, Bb16, C17, D17, E17, F#17, G#17, A17, Bb17, C18, D18, E18, F#18, G#18, A18, Bb18, C19, D19, E19, F#19, G#19, A19, Bb19, C20, D20, E20, F#20, G#20, A20, Bb20, C21, D21, E21, F#21, G#21, A21, Bb21, C22, D22, E22, F#22, G#22, A22, Bb22, C23, D23, E23, F#23, G#23, A23, Bb23, C24, D24, E24, F#24, G#24, A24, Bb24, C25, D25, E25, F#25, G#25, A25, Bb25, C26, D26, E26, F#26, G#26, A26, Bb26, C27, D27, E27, F#27, G#27, A27, Bb27, C28, D28, E28, F#28, G#28, A28, Bb28, C29, D29, E29, F#29, G#29, A29, Bb29, C30, D30, E30, F#30, G#30, A30, Bb30, C31, D31, E31, F#31, G#31, A31, Bb31, C32, D32, E32, F#32, G#32, A32, Bb32, C33, D33, E33, F#33, G#33, A33, Bb33, C34, D34, E34, F#34, G#34, A34, Bb34, C35, D35, E35, F#35, G#35, A35, Bb35, C36, D36, E36, F#36, G#36, A36, Bb36, C37, D37, E37, F#37, G#37, A37, Bb37, C38, D38, E38, F#38, G#38, A38, Bb38, C39, D39, E39, F#39, G#39, A39, Bb39, C40, D40, E40, F#40, G#40, A40, Bb40, C41, D41, E41, F#41, G#41, A41, Bb41, C42, D42, E42, F#42, G#42, A42, Bb42, C43, D43, E43, F#43, G#43, A43, Bb43, C44, D44, E44, F#44, G#44, A44, Bb44, C45, D45, E45, F#45, G#45, A45, Bb45, C46, D46, E46, F#46, G#46, A46, Bb46, C47, D47, E47, F#47, G#47, A47, Bb47, C48, D48, E48, F#48, G#48, A48, Bb48, C49, D49, E49, F#49, G#49, A49, Bb49, C50, D50, E50, F#50, G#50, A50, Bb50, C51, D51, E51, F#51, G#51, A51, Bb51, C52, D52, E52, F#52, G#52, A52, Bb52, C53, D53, E53, F#53, G#53, A53, Bb53, C54, D54, E54, F#54, G#54, A54, Bb54, C55, D55, E55, F#55, G#55, A55, Bb55, C56, D56, E56, F#56, G#56, A56, Bb56, C57, D57, E57, F#57, G#57, A57, Bb57, C58, D58, E58, F#58, G#58, A58, Bb58, C59, D59, E59, F#59, G#59, A59, Bb59, C60, D60, E60, F#60, G#60, A60, Bb60, C61, D61, E61, F#61, G#61, A61, Bb61, C62, D62, E62, F#62, G#62, A62, Bb62, C63, D63, E63, F#63, G#63, A63, Bb63, C64, D64, E64, F#64, G#64, A64, Bb64, C65, D65, E65, F#65, G#65, A65, Bb65, C66, D66, E66, F#66, G#66, A66, Bb66, C67, D67, E67, F#67, G#67, A67, Bb67, C68, D68, E68, F#68, G#68, A68, Bb68, C69, D69, E69, F#69, G#69, A69, Bb69, C70, D70, E70, F#70, G#70, A70, Bb70, C71, D71, E71, F#71, G#71, A71, Bb71, C72, D72, E72, F#72, G#72, A72, Bb72, C73, D73, E73, F#73, G#73, A73, Bb73, C74, D74, E74, F#74, G#74, A74, Bb74, C75, D75, E75, F#75, G#75, A75, Bb75, C76, D76, E76, F#76, G#76, A76, Bb76, C77, D77, E77, F#77, G#77, A77, Bb77, C78, D78, E78, F#78, G#78, A78, Bb78, C79, D79, E79, F#79, G#79, A79, Bb79, C80, D80, E80, F#80, G#80, A80, Bb80, C81, D81, E81, F#81, G#81, A81, Bb81, C82, D82, E82, F#82, G#82, A82, Bb82, C83, D83, E83, F#83, G#83, A83, Bb83, C84, D84, E84, F#84, G#84, A84, Bb84, C85, D85, E85, F#85, G#85, A85, Bb85, C86, D86, E86, F#86, G#86, A86, Bb86, C87, D87, E87, F#87, G#87, A87, Bb87, C88, D88, E88, F#88, G#88, A88, Bb88, C89, D89, E89, F#89, G#89, A89, Bb89, C90, D90, E90, F#90, G#90, A90, Bb90, C91, D91, E91, F#91, G#91, A91, Bb91, C92, D92, E92, F#92, G#92, A92, Bb92, C93, D93, E93, F#93, G#93, A93, Bb93, C94, D94, E94, F#94, G#94, A94, Bb94, C95, D95, E95, F#95, G#95, A95, Bb95, C96, D96, E96, F#96, G#96, A96, Bb96, C97, D97, E97, F#97, G#97, A97, Bb97, C98, D98, E98, F#98, G#98, A98, Bb98, C99, D99, E99, F#99, G#99, A99, Bb99, C100, D100, E100, F#100, G#100, A100, Bb100, C101, D101, E101, F#101, G#101, A101, Bb101, C102, D102, E102, F#102, G#102, A102, Bb102, C103, D103, E103, F#103, G#103, A103, Bb103, C104, D104, E104, F#104, G#104, A104, Bb104, C105, D105, E105, F#105, G#105, A105, Bb105, C106, D106, E106, F#106, G#106, A106, Bb106, C107, D107, E107, F#107, G#107, A107, Bb107, C108, D108, E108, F#108, G#108, A108, Bb108, C109, D109, E109, F#109, G#109, A109, Bb109, C110, D110, E110, F#110, G#110, A110, Bb110, C111, D111, E111, F#111, G#111, A111, Bb111, C112, D112, E112, F#112, G#112, A112, Bb112, C113, D113, E113, F#113, G#113, A113, Bb113, C114, D114, E114, F#114, G#114, A114, Bb114, C115, D115, E115, F#115, G#115, A115, Bb115, C116, D116, E116, F#116, G#116, A116, Bb116, C117, D117, E117, F#117, G#117, A117, Bb117, C118, D118, E118, F#118, G#118, A118, Bb118, C119, D119, E119, F#119, G#119, A119, Bb119, C120, D120, E120, F#120, G#120, A120, Bb120, C121, D121, E121, F#121, G#121, A121, Bb121, C122, D122, E122, F#122, G#122, A122, Bb122, C123, D123, E123, F#123, G#123, A123, Bb123, C124, D124, E124, F#124, G#124, A124, Bb124, C125, D125, E125, F#125, G#125, A125, Bb125, C126, D126, E126, F#126, G#126, A126, Bb126, C127, D127, E127, F#127, G#127, A127, Bb127, C128, D128, E128, F#128, G#128, A128, Bb128, C129, D129, E129, F#129, G#129, A129, Bb129, C130, D130, E130, F#130, G#130, A130, Bb130, C131, D131, E131, F#131, G#131, A131, Bb131, C132, D132, E132, F#132, G#132, A132, Bb132, C133, D133, E133, F#133, G#133, A133, Bb133, C134, D134, E134, F#134, G#134, A134, Bb134, C135, D135, E135, F#135, G#135, A135, Bb135, C136, D136, E136, F#136, G#136, A136, Bb136, C137, D137, E137, F#137, G#137, A137, Bb137, C138, D138, E138, F#138, G#138, A138, Bb138, C139, D139, E139, F#139, G#139, A139, Bb139, C140, D140, E140, F#140, G#140, A140, Bb140, C141, D141, E141, F#141, G#141, A141, Bb141, C142, D142, E142, F#142, G#142, A142, Bb142, C143, D143, E143, F#143, G#143, A143, Bb143, C144, D144, E144, F#144, G#144, A144, Bb144, C145, D145, E145, F#145, G#145, A145, Bb145, C146, D146, E146, F#146, G#146, A146, Bb146, C147, D147, E147, F#147, G#147, A147, Bb147, C148, D148, E148, F#148, G#148, A148, Bb148, C149, D149, E149, F#149, G#149, A149, Bb149, C150, D150, E150, F#150, G#150, A150, Bb150, C151, D151, E151, F#151, G#151, A151, Bb151, C152, D152, E152, F#152, G#152, A152, Bb152, C153, D153, E153, F#153, G#153, A153, Bb153, C154, D154, E154, F#154, G#154, A154, Bb154, C155, D155, E155, F#155, G#155, A155, Bb155, C156, D156, E156, F#156, G#156, A156, Bb156, C157, D157, E157, F#157, G#157, A157, Bb157, C158, D158, E158, F#158, G#158, A158, Bb158, C159, D159, E159, F#159, G#159, A159, Bb159, C160, D160, E160, F#160, G#160, A160, Bb160, C161, D161, E161, F#161, G#161, A161, Bb161, C162, D162, E162, F#162, G#162, A162, Bb162, C163, D163, E163, F#163, G#163, A163, Bb163, C164, D164, E164, F#164, G#164, A164, Bb164, C165, D165, E165, F#165, G#165, A165, Bb165, C166, D166, E166, F#166, G#166, A166, Bb166, C167, D167, E167, F#167, G#167, A167, Bb167, C168, D168, E168, F#168, G#168, A168, Bb168, C169, D169, E169, F#169, G#169, A169, Bb169, C170, D170, E170, F#170, G#170, A170, Bb170, C171, D171, E171, F#171, G#171, A171, Bb171, C172, D172, E172, F#172, G#172, A172, Bb172, C173, D173, E173, F#173, G#173, A173, Bb173, C174, D174, E174, F#174, G#174, A174, Bb174, C175, D175, E175, F#175, G#175, A175, Bb175, C176, D176, E176, F#176, G#176, A176, Bb176, C177, D177, E177, F#177, G#177, A177, Bb177, C178, D178, E178, F#178, G#178, A178, Bb178, C179, D179, E179, F#179, G#179, A179, Bb179, C180, D180, E180, F#180, G#180, A180, Bb180, C181, D181, E181, F#181, G#181, A181, Bb181, C182, D182, E182, F#182, G#182, A182, Bb182, C183, D183, E183, F#183, G#183, A183, Bb183, C184, D184, E184, F#184, G#184, A184, Bb184, C185, D185, E185, F#185, G#185, A185, Bb185, C186, D186, E186, F#186, G#186, A186, Bb186, C187, D187, E187, F#187, G#187, A187, Bb187, C188, D188, E188, F#188, G#188, A188, Bb188, C189, D189, E189, F#189, G#189, A189, Bb189, C190, D190, E190, F#190, G#190, A190, Bb190, C191, D191, E191, F#191, G#191, A191, Bb191, C192, D192, E192, F#192, G#192, A192, Bb192, C193, D193, E193, F#193, G#193, A193, Bb193, C194, D194, E194, F#194, G#194, A194, Bb194, C195, D195, E195, F#195, G#195, A195, Bb195, C196, D196, E196, F#196, G#196, A196, Bb196, C197, D197, E197, F#197, G#197, A197, Bb197, C198, D198, E198, F#198, G#198, A198, Bb198, C199, D199, E199, F#199, G#199, A199, Bb199, C200, D200, E200, F#200, G#200, A200, Bb200, C201, D201, E201, F#201, G#201, A201, Bb201, C202, D202, E202, F#202, G#202, A202, Bb202, C203, D203, E203, F#203, G#203, A203, Bb203, C204, D204, E204, F#204, G#204, A204, Bb204, C205, D205, E205, F#205, G#205, A205, Bb205, C206, D206, E206, F#206, G#206, A206, Bb206, C207, D207, E207, F#207, G#207, A207, Bb207, C208, D208, E208, F#208, G#208, A208, Bb208, C209, D209, E209, F#209, G#209, A209, Bb209, C210, D210, E210, F#210, G#210, A210, Bb210, C211, D211, E211, F#211, G#211, A211, Bb211, C212, D212, E212, F#212, G#212, A212, Bb212, C213, D213, E213, F#213, G#213, A213, Bb213, C214, D214, E214, F#214, G#214, A214, Bb214, C215, D215, E215, F#215, G#215, A215, Bb215, C216, D216, E216, F#216, G#216, A216, Bb216, C217, D217, E217, F#217, G#217, A217, Bb217, C218, D218, E218, F#218, G#218, A218, Bb218, C219, D219, E219, F#219, G#219, A219, Bb219, C220, D220, E220, F#220, G#220, A220, Bb220, C221, D221, E221, F#221, G#221, A221, Bb221, C222, D222, E222, F#222, G#222, A222, Bb222, C223, D223, E223, F#223, G#223, A223, Bb223, C224, D224, E224, F#224, G#224, A224, Bb224, C225, D225, E225, F#225, G#225, A225, Bb225, C226, D226, E226, F#226, G#226, A226, Bb226, C227, D227, E227, F#227, G#227, A227, Bb227, C228, D228, E228, F#228, G#228, A228, Bb228, C229, D229, E229, F#229, G#229, A229, Bb229, C230, D230, E230, F#230, G#230, A230, Bb230, C231, D231, E231, F#231, G#231, A231, Bb231, C232, D232, E232, F#232, G#232, A232, Bb232, C233, D233, E233, F#233, G#233, A233, Bb233, C234, D234, E234, F#234, G#234, A234, Bb234, C235, D235, E235, F#235, G#235, A235, Bb235, C236, D236, E236, F#236, G#236, A236, Bb236, C237, D237, E237, F#237, G#237, A237, Bb237, C238, D238, E238, F#238, G#238, A238, Bb238, C239, D239, E239, F#239, G#239, A239, Bb239, C240, D240, E240, F#240, G#240, A240, Bb240, C241, D241, E241, F#241, G#241, A241, Bb241, C242, D242, E242, F#242, G#242, A242, Bb242, C243, D243, E243, F#243, G#243, A243, Bb243, C244, D244, E244, F#244, G#244, A244, Bb244, C245, D245, E245, F#245, G#245, A245, Bb245, C246, D246, E246, F#246, G#246, A246, Bb246, C247, D247, E247, F#247, G#247, A247, Bb247, C248, D248, E248, F#248, G#248, A248, Bb248, C249, D249, E249, F#249, G#249, A249, Bb249, C250, D250, E250, F#250, G#250, A250, Bb250, C251, D251, E251, F#251, G#251, A251, Bb251, C252, D252, E252, F#252, G#252, A252, Bb252, C253, D253, E253, F#253, G#253, A253, Bb253, C254, D254, E254, F#254, G#254, A254, Bb254, C255, D255, E255, F#255, G#255, A255, Bb255, C256, D256, E256, F#256, G#256, A256, Bb256, C257, D257, E257, F#257, G#257, A257, Bb257, C258, D258, E258, F#258, G#258, A258, Bb258, C259, D259, E259, F#259, G#259, A259, Bb259, C260, D260, E260, F#260, G#260, A260, Bb260, C261, D261, E261, F#261, G#261, A261, Bb261, C262, D262, E262, F#262, G#262, A262, Bb262, C263, D263, E263, F#263, G#263, A263, Bb263, C264, D264, E264, F#264, G#264, A264, Bb264, C265, D265, E265, F#265, G#265, A265, Bb265, C266, D266, E266, F#266, G#266, A266, Bb266, C267, D267, E267, F#267, G#267, A267, Bb267, C268, D268, E268, F#268, G#268, A268, Bb268, C269, D269, E269, F#269, G#269, A269, Bb269, C270, D270, E270, F#270, G#270, A270, Bb270, C271, D271, E271, F#271, G#271, A271, Bb271, C272, D272, E272, F#272, G#272, A272, Bb272, C273, D273, E273, F#273, G#273, A273, Bb273, C274, D274, E274, F#274, G#274, A274, Bb274, C275, D275, E275, F#275, G#275, A275, Bb275, C276, D276, E276, F#276, G#276, A276, Bb276, C277, D277, E277, F#277, G#277, A277, Bb277, C278, D278, E278, F#278, G#278, A278, Bb278, C279, D279, E279, F#279, G#279, A279, Bb279, C280, D280, E280, F#280, G#280, A280, Bb280, C281, D281, E281, F#281, G#281, A281, Bb281, C282, D282, E282, F#282, G#282, A282, Bb282, C283, D283, E283, F#283, G#283, A283, Bb283, C284, D284, E284, F#284, G#284, A284, Bb284, C285, D285, E285, F#285, G#285, A285, Bb285, C286, D286, E286, F#286, G#286, A286, Bb286, C287, D287, E287, F#287, G#287, A287, Bb287, C288, D288, E288, F#288, G#288, A288, Bb288, C289, D289, E289, F#289, G#289, A289, Bb289, C290, D290, E290, F#290, G#290, A290, Bb290, C291, D291, E291, F#291, G#291, A291, Bb291, C292, D292, E292, F#292, G#292, A292, Bb292, C293, D293, E293, F#293, G#293, A293, Bb293, C294, D294, E294, F#294, G#294, A294, Bb294, C295, D295, E295, F#295, G#295, A295, Bb295, C296, D296, E296, F#296, G#296, A296, Bb296, C297, D297, E297, F#297, G#297, A297, Bb297, C298, D298, E298, F#298, G#298, A298, Bb298, C299, D299, E299, F#299, G#299, A299, Bb299, C300, D300, E300, F#300, G#300, A300, Bb300, C301, D301, E301, F#301, G#301, A301, Bb301, C302, D302, E302, F#302, G#302, A302, Bb302, C303, D303, E303, F#303, G#303, A303, Bb303, C304, D304, E304, F#304, G#304, A304, Bb304, C305, D305, E305, F#305, G#305, A305, Bb305, C306, D306, E306, F#306, G#306, A306, Bb306, C307, D307, E307, F#307, G#307, A307, Bb307, C308, D308, E308, F#308, G#308, A308, Bb308, C309, D309, E309, F#309, G#309, A309, Bb309, C310, D310, E310, F#310, G#310, A310, Bb310, C311, D311, E311, F#311, G#311, A311, Bb311, C312, D312, E312, F#312, G#312, A312, Bb312, C313, D313, E313, F#313, G#313, A313, Bb313, C314, D314, E314, F#314, G#314, A314, Bb314, C315, D315, E315, F#315, G#315, A315, Bb315, C316, D316, E316, F#316, G#316, A316, Bb316, C317, D317, E317, F#317, G#317, A317, Bb317, C318, D318, E318, F#318, G#318, A318, Bb318, C319, D319, E319, F#319, G#319, A319, Bb319, C320, D320, E320, F#320, G#320, A320, Bb320, C321, D321, E321, F#321, G#321, A321, Bb321, C322, D322, E322, F#322, G#322, A322, Bb322, C323, D323, E323, F#323, G#323, A323, Bb323, C324, D324, E324, F#324, G#324, A324, Bb324, C325, D325, E325, F#325, G#325, A325, Bb325, C326, D326, E326, F#326, G#326, A326, Bb326, C327, D327, E327, F#327, G#327, A327, Bb327, C328, D328, E328, F#328, G#328, A328, Bb328, C329, D329, E329, F#329, G#329, A329, Bb329, C330, D330, E330, F#330, G#330, A330, Bb330, C331, D331, E331, F#331, G#331, A331, Bb331, C332, D332, E332, F#332, G#332, A332, Bb332, C333, D333, E333, F#333, G#333, A333, Bb333, C334, D334, E334, F#334, G#334, A334, Bb334, C335, D335, E335, F#335, G#335, A335, Bb335, C336, D336, E336, F#336, G#336, A336, Bb336, C337, D337, E337, F#337, G#337, A337, Bb337, C338, D338, E338, F#338, G#338, A338, Bb338, C339, D339, E339, F#339, G#339, A339, Bb339, C340, D340, E340, F#340, G#340, A340, Bb340, C341, D341, E341, F#341, G#341, A341, Bb341, C342, D342, E342, F#342, G#342, A342, Bb342, C343, D343, E343, F#343, G#343, A343, Bb343, C344, D344, E344, F#344, G#344, A344, Bb344, C345, D345, E345, F#

Handwritten musical notation for the first system. It consists of a treble clef staff and a bass clef staff. The treble clef staff has a whole note chord with a flat (F) and a fermata. The bass clef staff has a melodic line starting with a whole note chord with two flats (Bb, Eb) and a fermata, followed by a series of eighth notes with various accidentals (flats and naturals). A large slur covers the entire system.

Handwritten musical notation for the second system. It consists of a treble clef staff and a bass clef staff. The treble clef staff has a whole note chord with a flat (F) and a fermata. The bass clef staff has a melodic line starting with a whole note chord with two flats (Bb, Eb) and a fermata, followed by a series of eighth notes with various accidentals (flats and naturals). A large slur covers the entire system.

Handwritten musical notation for the third system. It consists of a treble clef staff and a bass clef staff. The treble clef staff has a whole note chord with a flat (F) and a fermata. The bass clef staff has a melodic line starting with a whole note chord with two flats (Bb, Eb) and a fermata, followed by a series of eighth notes with various accidentals (flats and naturals). A large slur covers the entire system. The word "quit" is circled in the space above the treble clef staff.

Four empty musical staves, each consisting of five lines.

frei (subito)

Handwritten musical notation for the first system. It consists of a treble and bass clef. A circled '77' is written in the bass clef. The treble clef has a melodic line with various ornaments and a long slur. The bass clef has a few notes.

rit

Handwritten musical notation for the second system. It consists of a treble and bass clef. A 'rit' marking is written above the treble clef. The treble clef has a melodic line with a long slur. The bass clef has a few notes.

subito

Handwritten musical notation for the third system. It consists of a treble and bass clef. A 'subito' marking is written above the treble clef. The treble clef has a melodic line with various ornaments and a long slur. The bass clef has a few notes.

Four empty musical staves, each consisting of a treble and bass clef.

Handwritten musical notation for the first system. It consists of two staves (treble and bass clef) with a common time signature. The music is marked with a large slur and the word "rit" (ritardando) written above the staff. The notes are mostly quarter and eighth notes, with some rests.

Handwritten musical notation for the second system. It consists of two staves (treble and bass clef) with a common time signature. The music is marked with a large slur and the word "subito" written above the staff. The notation includes some complex rhythmic patterns and accidentals.

Handwritten musical notation for the third system. It consists of two staves (treble and bass clef) with a common time signature. The music is marked with a large slur and a fermata over the final notes. The notes are mostly quarter and eighth notes, with some rests.

Four empty musical staves at the bottom of the page, consisting of two treble clef staves and two bass clef staves.

rubato (accel.)

graves mit

gut

G.P.

lento (♩) oder schlicht

gut

Handwritten musical notation for the first system. The treble staff contains a melodic line with notes and accidentals (flats and sharps) connected by a slur. The bass staff contains a chordal accompaniment with notes and accidentals.

Handwritten musical notation for the second system. The treble staff contains a melodic line with notes and accidentals connected by a slur. The bass staff contains a chordal accompaniment with notes and accidentals.

Handwritten musical notation for the third system. The treble staff contains a melodic line with notes and accidentals connected by a slur. The bass staff contains a chordal accompaniment with notes and accidentals.

Empty musical staves for the fourth and fifth systems, consisting of two treble and two bass staves each.

sehr ruhig

Handwritten musical notation for the first system, featuring a treble and bass clef with various notes and accidentals. The treble clef staff contains a sequence of notes: G4, A4, B4, C5, D5, E5, F5, G5, A5, B5, C6, D6, E6, F6, G6, A6, B6, C7, D7, E7, F7, G7, A7, B7, C8. The bass clef staff contains notes: C3, D3, E3, F3, G3, A3, B3, C4, D4, E4, F4, G4, A4, B4, C5, D5, E5, F5, G5, A5, B5, C6, D6, E6, F6, G6, A6, B6, C7, D7, E7, F7, G7, A7, B7, C8.

Handwritten musical notation for the second system, including a circled 'fin' marking. The treble clef staff contains notes: G4, A4, B4, C5, D5, E5, F5, G5, A5, B5, C6, D6, E6, F6, G6, A6, B6, C7, D7, E7, F7, G7, A7, B7, C8. The bass clef staff contains notes: C3, D3, E3, F3, G3, A3, B3, C4, D4, E4, F4, G4, A4, B4, C5, D5, E5, F5, G5, A5, B5, C6, D6, E6, F6, G6, A6, B6, C7, D7, E7, F7, G7, A7, B7, C8.

Handwritten musical notation for the third system, marked 'Tempo' and 'pp'. The treble clef staff contains notes: G4, A4, B4, C5, D5, E5, F5, G5, A5, B5, C6, D6, E6, F6, G6, A6, B6, C7, D7, E7, F7, G7, A7, B7, C8. The bass clef staff contains notes: C3, D3, E3, F3, G3, A3, B3, C4, D4, E4, F4, G4, A4, B4, C5, D5, E5, F5, G5, A5, B5, C6, D6, E6, F6, G6, A6, B6, C7, D7, E7, F7, G7, A7, B7, C8.

Handwritten musical notation for the first system. The treble staff contains three measures of chords with accidentals (flats and naturals) and slurs. The bass staff contains three measures of single notes with accidentals, including a circled note in the second measure.

Handwritten musical notation for the second system. The treble staff contains three measures of chords with accidentals and slurs. The bass staff contains three measures of single notes with accidentals.

Handwritten musical notation for the third system. The treble staff contains three measures of chords with accidentals and slurs, with the word "(auf)" written above the second measure. The bass staff contains three measures of single notes with accidentals.

Four empty musical staves, consisting of two treble clefs and two bass clefs, arranged vertically.

(frei)

Handwritten musical notation for the first system. The treble clef staff contains a whole note chord with a sharp sign. The bass clef staff contains a series of notes with accidentals, including a sharp sign and a circled 'p' dynamic marking. A slur is present over the first two measures.

Handwritten musical notation for the second system. The treble clef staff shows notes with accidentals and a circled 'p' dynamic marking. The bass clef staff contains notes with accidentals and a slur.

vorwärts drängen

Handwritten musical notation for the third system. The treble clef staff contains notes with accidentals and a circled 'p' dynamic marking. The bass clef staff has a whole note chord with a sharp sign. A slur is present over the first two measures.

Four empty musical staves, each consisting of five horizontal lines.

Handwritten musical notation for the first system, featuring a treble clef and a bass clef. The treble staff contains a melodic line with a slur and a fermata. The bass staff contains a chordal accompaniment with a circled 'f' dynamic marking.

Handwritten musical notation for the second system, featuring a treble clef and a bass clef. The treble staff contains a melodic line with a slur and a fermata. The bass staff contains a chordal accompaniment with a circled 'f' dynamic marking and a 'pp' dynamic marking.

Allegro con brio (♩)

Handwritten musical notation for the third system, featuring a treble clef and a bass clef. The treble staff contains a melodic line with a slur and a fermata. The bass staff contains a chordal accompaniment with a circled 'f' dynamic marking and a 'pp' dynamic marking.

Handwritten musical notation for the first system. It features a grand staff with treble and bass clefs. The right hand has a melodic line with a slur and a fermata. The left hand has a bass line with a slur and a fermata. There are some handwritten annotations above the staff, including arrows and a '6'.

Handwritten musical notation for the second system. Similar to the first, it shows a grand staff with treble and bass clefs. The right hand has a melodic line with a slur and a fermata. The left hand has a bass line with a slur and a fermata. A circled '9' is written in the left hand. There are handwritten annotations above the staff, including a '6'.

Handwritten musical notation for the third system. It features a grand staff with treble and bass clefs. The right hand has a melodic line with a slur and a fermata. The left hand has a bass line with a slur and a fermata. There are handwritten annotations above the staff, including a '6'.

Handwritten musical notation for the fourth system. It features a grand staff with treble and bass clefs. The right hand has a melodic line with a slur and a fermata. The left hand has a bass line with a slur and a fermata. There are handwritten annotations above the staff, including a '6'.

Presto (agitato) (fres)

(af 1)

711

Handwritten musical notation for the first system. It consists of two staves: a treble clef staff and a bass clef staff. The treble staff contains a series of notes with accidentals (flats and naturals) and slurs. The bass staff contains a series of notes with accidentals and slurs. A large, sweeping slur encompasses both staves. A circled number '711' is written in the left margin.

Handwritten musical notation for the second system. It consists of two staves: a treble clef staff and a bass clef staff. The treble staff contains a series of notes with accidentals and slurs. The bass staff contains a series of notes with accidentals and slurs. A large, sweeping slur encompasses both staves.

Handwritten musical notation for the third system. It consists of two staves: a treble clef staff and a bass clef staff. The treble staff contains a series of notes with accidentals and slurs. The bass staff contains a series of notes with accidentals and slurs. A large, sweeping slur encompasses both staves.

Handwritten musical notation for the fourth system. It consists of two staves: a treble clef staff and a bass clef staff. The treble staff contains a series of notes with accidentals and slurs. The bass staff contains a series of notes with accidentals and slurs. A large, sweeping slur encompasses both staves.

Handwritten musical notation for the first system, featuring a grand staff with treble and bass clefs. The right hand has a melodic line with a slur and a fermata, while the left hand has a rhythmic accompaniment. A large bracket spans across both staves.

Handwritten musical notation for the second system, similar to the first, with a grand staff and a large bracket. The right hand continues the melodic line with a slur and a fermata.

Handwritten musical notation for the third system, continuing the piece with a grand staff and a large bracket. The right hand has a melodic line with a slur and a fermata.

Handwritten musical notation for the fourth system, the final system on the page, with a grand staff and a large bracket. The right hand has a melodic line with a slur and a fermata.

Handwritten musical notation for the first system. It consists of two staves: a treble clef staff and a bass clef staff. The treble staff contains several notes with stems pointing down, some with slurs. The bass staff contains a series of notes with stems pointing down, also with slurs. A large, sweeping slur arches over the entire system, connecting the two staves.

Handwritten musical notation for the second system. It consists of two staves: a treble clef staff and a bass clef staff. The treble staff contains notes with stems pointing down, some with flats. The bass staff contains notes with stems pointing down, some with flats. A large, sweeping slur arches over the entire system, connecting the two staves.

Handwritten musical notation for the third system. It consists of two staves: a treble clef staff and a bass clef staff. The treble staff contains notes with stems pointing down, some with flats. The bass staff contains notes with stems pointing down, some with flats. A large, sweeping slur arches over the entire system, connecting the two staves.

Handwritten musical notation for the fourth system. It consists of two staves: a treble clef staff and a bass clef staff. The treble staff contains notes with stems pointing down, some with flats. The bass staff contains notes with stems pointing down, some with flats. A large, sweeping slur arches over the entire system, connecting the two staves.

quasi (frei) (arrang.)

The first system of handwritten musical notation consists of two staves. The upper staff is in treble clef and contains a melodic line with a long slur over the first few notes, followed by several notes with accidentals (sharps and flats). The lower staff is in bass clef and contains a bass line with notes and accidentals, some of which are grouped with brackets. The notation is fluid and appears to be a personal arrangement.

The second system continues the musical piece with two staves. The upper staff shows a continuation of the melodic line with a slur and various accidentals. The lower staff continues the bass line with notes and accidentals, maintaining the harmonic structure.

frei

The third system is marked *frei* and shows a significant departure from the previous notation. Both the upper and lower staves are filled with dense, overlapping scribbles and lines, suggesting a highly improvisatory or experimental section. The notation is less structured and more gestural.

The fourth system continues the dense, scribbled-out passages from the previous system. The notation is highly abstract and appears to be a continuation of the improvisatory section, with both staves filled with overlapping lines and shapes.

sehr breit (ausladend)

Handwritten musical score for the first system. The top staff is a treble clef staff containing a melodic line of chords. The bottom two staves are a grand staff with two bass clef staves, containing a few notes and rests, with a large slur underneath. The word "sehr breit" is written above the first staff.

Handwritten musical score for the second system. The top staff is a treble clef staff containing a melodic line of chords. The bottom two staves are a grand staff with two bass clef staves, containing a few notes and rests, with a large slur underneath. A circled "2:" is visible at the end of the system.

Handwritten musical score for the third system. The top staff is a treble clef staff containing a melodic line of chords. The bottom two staves are a grand staff with two bass clef staves, containing a few notes and rests, with a large slur underneath. A circled "2:" is visible at the end of the system.

Handwritten musical score for the first system. The treble clef staff contains a series of chords: a triad with a flat (F, A, C), a triad with a flat (F, A, C), a triad with a flat (F, A, C), a triad with a flat (F, A, C), a triad with a flat (F, A, C), a triad with a flat (F, A, C), a triad with a flat (F, A, C), and a triad with a flat (F, A, C). The bass clef staff contains a single note, a flat (F).

Handwritten musical score for the second system. The treble clef staff contains a series of chords: a triad with a flat (F, A, C), a triad with a flat (F, A, C), a triad with a flat (F, A, C), a triad with a flat (F, A, C), a triad with a flat (F, A, C), a triad with a flat (F, A, C), and a triad with a flat (F, A, C). The bass clef staff contains a single note, a flat (F).

Handwritten musical score for the third system. The treble clef staff contains a series of chords: a triad with a flat (F, A, C), a triad with a flat (F, A, C), a triad with a flat (F, A, C), a triad with a flat (F, A, C), a triad with a flat (F, A, C), and a triad with a flat (F, A, C). The bass clef staff contains a single note, a flat (F).

großes rit.

Handwritten musical score for the first system. The top staff is a treble clef with a melodic line. The bottom two staves are a grand staff with a bass line. The music is marked 'großes rit.' and includes various notes, rests, and dynamic markings.

Handwritten musical score for the second system. The top staff is a treble clef with a melodic line. The bottom two staves are a grand staff with a bass line. The music is marked 'großes rit.' and includes various notes, rests, and dynamic markings.

Handwritten musical score for the third system. The top staff is a treble clef with a melodic line. The bottom two staves are a grand staff with a bass line. The music is marked 'Lunga' and includes a section labeled '(b)'. The notation is dense and includes many accidentals and slurs.

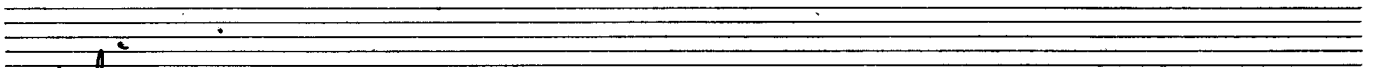
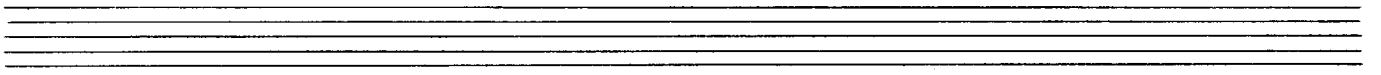
Eine See ist Gottes Gnade

N. 4.

Orgelfantasia

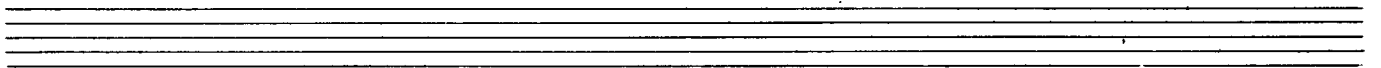
1971-1977

Adolf Scherbaum



ruhig

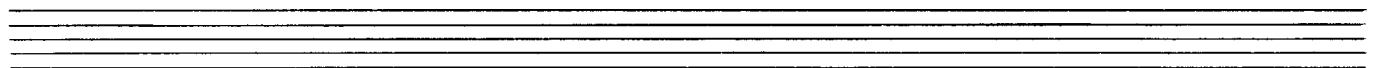
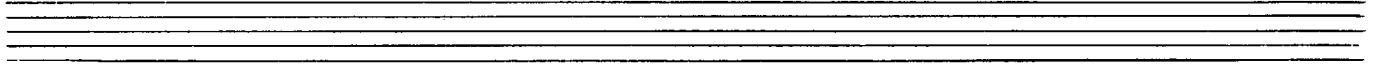
Handwritten musical notation for the first system. It consists of two staves. The upper staff has a treble clef, a key signature of one flat (B-flat), and a 4/4 time signature. The lower staff has a bass clef. The music features a series of quarter notes in the bass staff, with a melodic line in the treble staff. A circled 'p' is written in the treble staff. A slur covers the first two notes of the treble staff, and another slur covers the last two notes. The notes in the treble staff are G4, A4, Bb4, and C5. The notes in the bass staff are G2, F2, E2, and D2.



Handwritten musical notation for the second system. It consists of two staves. The upper staff has a treble clef, a key signature of one flat (B-flat), and a 4/4 time signature. The lower staff has a bass clef. The music features a series of quarter notes in the bass staff, with a melodic line in the treble staff. A slur covers the first two notes of the treble staff, and another slur covers the last two notes. The notes in the treble staff are G4, A4, Bb4, and C5. The notes in the bass staff are G2, F2, E2, and D2.



Handwritten musical notation for the third system. It consists of two staves. The upper staff has a treble clef, a key signature of one flat (B-flat), and a 4/4 time signature. The lower staff has a bass clef. The music features a series of quarter notes in the bass staff, with a melodic line in the treble staff. A slur covers the first two notes of the treble staff, and another slur covers the last two notes. The notes in the treble staff are G4, A4, Bb4, and C5. The notes in the bass staff are G2, F2, E2, and D2.



Handwritten musical notation for the first system. The treble clef staff contains a melodic line with notes and accidentals (sharps, naturals, flats) and dynamic markings like accents and slurs. The bass clef staff shows chordal accompaniment with notes and slurs.

Handwritten musical notation for the second system. The treble clef staff continues the melodic line with various note values and accidentals. The bass clef staff provides accompaniment with chords and slurs.

Handwritten musical notation for the third system. The treble clef staff features melodic phrases with slurs and accents. The bass clef staff shows accompaniment with chords and slurs.

Handwritten musical notation for the first system. The treble clef staff contains a whole note chord with a sharp sign (#) and a half note with a flat sign (b). The bass clef staff contains a whole note chord with a sharp sign (#) and a half note with a sharp sign (#). Below the staff, there are handwritten notes: $b\bar{0}$, $\bar{0}$, and $\bar{0}$.

(poco rit)

Handwritten musical notation for the second system, including the tempo marking *(poco rit)*. The treble clef staff shows a half note with a sharp sign (#) and a half note with a flat sign (b). The bass clef staff shows a half note with a sharp sign (#) and a half note with a flat sign (b). Below the staff, there are handwritten notes: $7\bar{0}$, $\bar{0}$, $\bar{0}$, and $b\bar{0}$.

sehr ruhig

Handwritten musical notation for the third system, featuring the tempo marking *sehr ruhig*. The treble clef staff contains eighth notes with various accidentals (sharps and flats). The bass clef staff contains whole notes with various accidentals. Below the staff, there are handwritten notes: $\bar{0}$ and $\bar{0}$.

Andagio

Handwritten musical notation for the first system. It consists of two staves: a treble clef staff and a bass clef staff. The treble staff begins with a quarter rest, followed by a measure with a quarter note G#4 and a quarter note A4. The bass staff has a quarter rest, followed by a measure with a quarter note G3 and a quarter note A3. A second measure in both staves contains a quarter note G#4 and a quarter note A4 in the treble, and a quarter note G3 and a quarter note A3 in the bass. A third measure in both staves contains a quarter note G#4 and a quarter note A4 in the treble, and a quarter note G3 and a quarter note A3 in the bass. The system concludes with a double bar line. Dynamic markings include 'pp' in the second measure of the treble staff.

Handwritten musical notation for the second system. It consists of two staves: a treble clef staff and a bass clef staff. The treble staff begins with a quarter note G#4 and a quarter note A4. The bass staff has a quarter note G3 and a quarter note A3. A second measure in both staves contains a quarter note G#4 and a quarter note A4 in the treble, and a quarter note G3 and a quarter note A3 in the bass. A third measure in both staves contains a quarter note G#4 and a quarter note A4 in the treble, and a quarter note G3 and a quarter note A3 in the bass. The system concludes with a double bar line.

Handwritten musical notation for the third system. It consists of two staves: a treble clef staff and a bass clef staff. The treble staff begins with a quarter note G#4 and a quarter note A4. The bass staff has a quarter note G3 and a quarter note A3. A second measure in both staves contains a quarter note G#4 and a quarter note A4 in the treble, and a quarter note G3 and a quarter note A3 in the bass. A third measure in both staves contains a quarter note G#4 and a quarter note A4 in the treble, and a quarter note G3 and a quarter note A3 in the bass. The system concludes with a double bar line and a fermata over the final note in both staves.

subito (rubato) (fres)

buert

accel → (rit)

subito (rit)

G.P.

Adagio (sehr langsam)

pp 4/4 Mysterioso

Handwritten musical notation for the first system. The treble clef staff contains a whole note G with a sharp sign, followed by a whole rest, and then a whole note G. The bass clef staff contains a half note G with a flat sign, followed by a quarter note G with a sharp sign, a quarter note G with a sharp sign, a half note G with a flat sign, a quarter note G, and a quarter note G with a sharp sign.

Handwritten musical notation for the second system. The treble clef staff begins with a piano (p) dynamic marking. It contains a half note G with a sharp sign, followed by a quarter note G with a sharp sign, a quarter note G with a flat sign, and a whole note G. The bass clef staff contains a half note G with a sharp sign, a quarter note G with a sharp sign, a quarter note G with a flat sign, a half note G with a flat sign, and a quarter note G with a sharp sign.

Handwritten musical notation for the third system. The treble clef staff contains a half note G, a quarter note G with a sharp sign, a quarter note G with a flat sign, a quarter note G with a flat sign, and a whole note G. The bass clef staff contains a half note G with a sharp sign, a quarter note G with a sharp sign, a quarter note G with a flat sign, a quarter note G with a flat sign, and a quarter note G with a sharp sign.

(poco rit)

Handwritten musical notation for the fourth system. The treble clef staff contains a half note G with a sharp sign, a quarter note G with a sharp sign, a quarter note G with a flat sign, and a whole note G. The bass clef staff contains a half note G with a sharp sign, a quarter note G with a sharp sign, a quarter note G with a flat sign, and a quarter note G with a sharp sign. The system concludes with a double bar line.

Tempo cresc.
sehr wichtig (improvisieren)

M

no words / tempo allegro

Handwritten musical notation for the first system. It consists of two staves. The upper staff is in treble clef and contains a melodic line with eighth and sixteenth notes, including sharps and naturals. The lower staff is in bass clef and contains a bass line with similar rhythmic values and accidentals. A circled '9' is written in the first measure of the upper staff. A large slur covers the entire system.

Handwritten musical notation for the second system. It consists of two staves. The upper staff continues the melodic line with more complex rhythmic patterns, including beamed sixteenth notes. The lower staff continues the bass line. A circled '9' is written in the first measure of the upper staff. A large slur covers the entire system.

Handwritten musical notation for the third system. It consists of two staves. The upper staff continues the melodic line with various rhythmic values and accidentals. The lower staff continues the bass line. A circled '9' is written in the first measure of the upper staff. A large slur covers the entire system.

Handwritten musical notation for the fourth system. It consists of two staves. The upper staff continues the melodic line, ending with a double bar line. The lower staff continues the bass line. A circled '9' is written in the first measure of the upper staff. A large slur covers the entire system.

sehr rasch bewegt (Closur)

Handwritten musical notation for the first system, featuring a treble and bass clef with notes and accidentals. The notation includes a circled '77' in the treble staff and a circled '77' in the bass staff.

Prestissimo (2/2) sehr energisch

Handwritten musical notation for the second system, showing a treble and bass clef with complex rhythmic markings and notes. The notation includes a circled '77' in the treble staff and a circled '77' in the bass staff.

Handwritten musical notation for the third system, featuring a treble and bass clef with notes and accidentals. The notation includes a circled '77' in the treble staff and a circled '77' in the bass staff.

Handwritten musical notation for the fourth system, showing a treble and bass clef with notes and accidentals. The notation includes a circled '77' in the treble staff and a circled '77' in the bass staff.

Handwritten musical notation for the first system, consisting of two staves. The top staff has a treble clef and contains notes with various accidentals (sharps, flats, naturals) and rests. The bottom staff has a bass clef and contains notes with accidentals and rests. There are dynamic markings like 'p' and 'f' and some handwritten numbers like '33' and '1'.

Handwritten musical notation for the second system, including a grand staff with piano and organ parts. The top two staves are for the piano, and the bottom two are for the organ. The piano part has a treble clef and contains notes with accidentals and rests. The organ part has a bass clef and contains notes with accidentals and rests. There are dynamic markings like 'p' and 'f' and some handwritten numbers like '33' and '1'.

Handwritten musical notation for the third system, featuring a grand staff with piano and organ parts. The top two staves are for the piano, and the bottom two are for the organ. The piano part has a treble clef and contains notes with accidentals and rests. The organ part has a bass clef and contains notes with accidentals and rests. There are dynamic markings like 'p' and 'f' and some handwritten numbers like '33' and '1'.

(2. + gewalt)

peantra (frei)

Lento

(2. + noch weiter)

sehr breit (ausladend)

Handwritten musical score for the first system, featuring a grand staff with treble, alto, and bass clefs. The music is written in a wide, expressive style with long horizontal lines and various chordal structures. The key signature has one sharp (F#) and the time signature is 4/4. The word "güt" is written in the bass staff.

Handwritten musical score for the second system, continuing the grand staff notation. It includes complex chordal patterns and a large, scribbled-out section at the end of the system.

Lumpen

Eine See ist Gottes Gnade

Orgelfantasien

1971

Adolf Scherbaum

N.5

sehr breit (Largo)

Handwritten musical notation for the first system, featuring a treble clef and a grand staff. The notation includes a long melodic line with a slur, a circled key signature of one sharp (F#), and various rhythmic markings such as '33' and '9'.

Handwritten musical notation for the second system, featuring a treble clef and a grand staff. The notation includes a circled key signature of one sharp (F#), a circled key signature of two sharps (F# and C#), and various rhythmic markings such as '33' and '9'.

Handwritten musical score for the first system. The system consists of two staves. The upper staff is in treble clef and contains several measures of music, including a triplet of eighth notes and a triplet of sixteenth notes. The lower staff is in bass clef and contains a few notes. There are various annotations, including a circled '4' and the word 'subito' written below the staff. The music is enclosed in a large bracket.

Handwritten musical score for the second system. Similar to the first system, it has two staves. The upper staff features more complex rhythmic patterns, including a circled '4' and a sharp sign. The lower staff has a few notes. The system is enclosed in a large bracket.

Handwritten musical score for the third system. It consists of two staves. The upper staff has a circled '4' and a sharp sign. The lower staff has a few notes. The system ends with a 6/4 time signature. The music is enclosed in a large bracket.

Handwritten musical score for the first system. It consists of three staves. The top staff is in treble clef and contains several chords and a melodic line with a triplet of eighth notes. The middle staff is in bass clef and contains chords and a melodic line with a circled '2' and a triplet of eighth notes. The bottom staff is in bass clef and contains a few notes. There are various annotations, including a circled '2' and a '3' under a triplet.

Handwritten musical score for the second system. It consists of three staves. The top staff is in treble clef and contains chords and a melodic line. The middle staff is in bass clef and contains chords and a melodic line. The bottom staff is in bass clef and contains a few notes. The word "lunga" is written in the middle of the system. There are various annotations, including a circled '2' and a '3' under a triplet.

Handwritten musical score for the third system. It consists of two staves. The top staff is in treble clef and contains a melodic line with a '4' above it. The bottom staff is in bass clef and contains a melodic line with a '4' below it. The instruction "sehr rasch" is written above the first staff. There are various annotations, including a circled '2' and a '3' under a triplet.

4

Handwritten musical notation for the first system, featuring a treble and bass clef with various notes and accidentals.

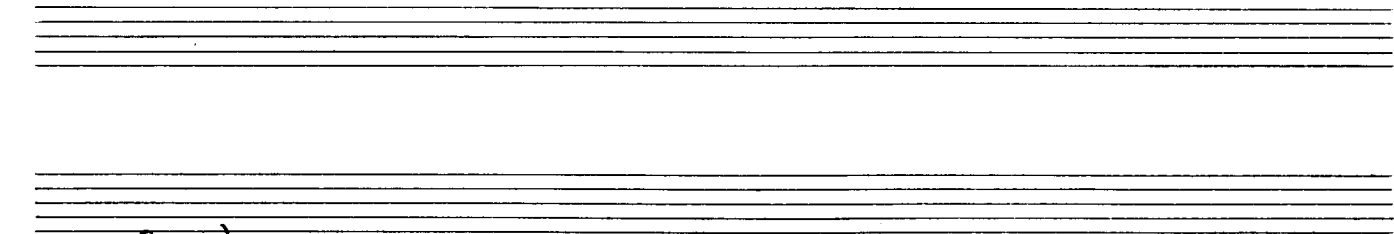
Handwritten musical notation for the second system, including a treble clef and a circled "rit" marking.

Handwritten musical notation for the third system, showing a "breit" marking and a circled "rit" marking.

Handwritten musical notation for the fourth system, with "frei frei" and "steigend" markings.

accel.

Presto



(frei)

Leute (♩)

Handwritten musical notation for the first system. The treble clef staff contains a melody starting with a half note, followed by a slur over two measures of quarter notes. A circled 'p' is written below the first measure. The bass clef staff contains chords in the left hand, including a 4/8 time signature.

Handwritten musical notation for the second system. The treble clef staff continues the melody with a slur over two measures. The bass clef staff continues the chordal accompaniment.

Handwritten musical notation for the third system. The treble clef staff continues the melody with a slur over two measures. The bass clef staff continues the chordal accompaniment.

Handwritten musical notation for the first system. The top staff (treble clef) contains a melodic line with a long slur over the first two measures. The bottom staff (bass clef) contains chordal accompaniment with various accidentals (sharps, flats, naturals).

Handwritten musical notation for the second system. The top staff continues the melodic line with a slur. The bottom staff continues the chordal accompaniment.

Handwritten musical notation for the third system. The top staff continues the melodic line. The bottom staff includes a circled measure in the final measure, possibly indicating a specific performance instruction or a correction.

Handwritten musical notation for the fourth system. The top staff continues the melodic line. The bottom staff concludes the chordal accompaniment.

Handwritten musical notation for the first system, featuring a treble and bass clef with various notes and accidentals.

(poco rit)

Handwritten musical notation for the second system, including a treble and bass clef and a double bar line at the end.

lento (Mysterioso)

Handwritten musical notation for the third system, starting with a circled 'p' and a time signature of 4/8.

Handwritten musical notation for the fourth system, continuing the piece with treble and bass clefs.

Handwritten musical notation for the first system, featuring a treble and bass clef with a slur over two measures. The melody in the treble clef consists of quarter notes with accidentals (flats and sharps). The bass clef accompaniment features chords with accidentals.

Handwritten musical notation for the second system, featuring a treble and bass clef with a slur over two measures. A circled 'p' dynamic marking is present. The melody in the treble clef continues with quarter notes and accidentals. The bass clef accompaniment includes a whole note chord in the second measure.

Cresc.

Handwritten musical notation for the third system, featuring a treble and bass clef with a slur over two measures. The melody in the treble clef continues with quarter notes and accidentals. The bass clef accompaniment includes a whole note chord in the first measure.

Handwritten musical notation for the fourth system, featuring a treble and bass clef with a slur over two measures. A circled 'mf' dynamic marking is present. The melody in the treble clef continues with quarter notes and accidentals. The bass clef accompaniment includes a whole note chord in the second measure.

pesante (♩) appassionato

Handwritten musical score for the first system. The treble clef staff contains a slur over two measures. The first measure has notes G4, A4, B4 with a flat above the staff. The second measure has notes G4, A4, B4 with a flat above the staff. The bass clef staff contains chords with various accidentals, including flats and naturals.

Handwritten musical score for the second system. The treble clef staff contains a slur over two measures. The first measure has notes G4, A4, B4 with a sharp above the staff. The second measure has notes G4, A4, B4 with a flat above the staff. The bass clef staff contains chords with various accidentals, including flats and naturals.

Handwritten musical score for the third system. The treble clef staff contains a slur over two measures. The first measure has notes G4, A4, B4 with a flat above the staff. The second measure has notes G4, A4, B4 with a flat above the staff. The bass clef staff contains chords with various accidentals, including flats and naturals. The instruction *(poco rit)* is written below the bass clef staff.

(frei) rubato *(sehr rasch)*

Handwritten musical score for the first system, featuring three staves with notes, rests, and a long melodic line in the upper staff.

Handwritten musical score for the second system, similar to the first, with three staves and a long melodic line.

Handwritten musical score for the third system, including tempo markings "largo (sehr langsam (♩))" and "lunga", a "pp" dynamic marking, and a "G.P." box.

largo (solido)

Handwritten musical score for the first system, featuring three staves. The top staff contains a melodic line with notes and rests, starting with a circled *pp* dynamic marking. The middle staff has a 4-measure rest. The bottom staff contains a bass line with notes and rests, including a *pp* marking. A large slur encompasses the entire system.

Handwritten musical score for the second system, continuing the three-staff notation. It features various musical notations, including notes, rests, and dynamic markings. A large slur encompasses the entire system.

Handwritten musical score for the third system, concluding the piece. It features a *largo* marking and a final cadence. A large slur encompasses the entire system.

Eine See ist Gottes Gnade

Orgel Improvisationen

1977

No 6

Adolf Scherbaum

Leute (A)

Handwritten musical notation for the first system. The treble staff contains a slur over four measures. The notes are: G4 (with #), A4 (with #), B4 (with #), and C5 (with #). The bass staff contains notes: G3, A3, B3, and C4. Above the treble staff, there are handwritten symbols: #9, b9, 9, and #9.

Handwritten musical notation for the second system. The treble staff contains a slur over three measures. The notes are: G4 (with #), A4 (with #), and B4 (with #). The bass staff contains notes: G3, A3, and B3. Above the treble staff, there are handwritten symbols: #9, b9, and #9.

Handwritten musical notation for the third system. The treble staff contains a slur over two measures. The notes are: G4 (with #), A4 (with #), and B4 (with #). The bass staff contains notes: G3, A3, and B3. Above the treble staff, there are handwritten symbols: b9 and #9.

Handwritten musical notation for the fourth system. The treble staff contains a slur over two measures. The notes are: G4 (with #), A4 (with #), and B4 (with #). The bass staff contains notes: G3, A3, and B3. Above the treble staff, there are handwritten symbols: b9 and #9.

Handwritten musical notation for the first system. The treble staff contains a melodic line with a fermata over the final note. The bass staff contains a bass line with a fermata over the final note. A large slur covers both staves.

Handwritten musical notation for the second system. The treble staff contains a melodic line with a fermata over the final note. The bass staff contains a bass line with a fermata over the final note. A large slur covers both staves.

Handwritten musical notation for the third system. The treble staff contains a melodic line with a fermata over the final note. The bass staff contains a bass line with a fermata over the final note. A large slur covers both staves.

Handwritten musical notation for the fourth system. The treble staff contains a melodic line with a fermata over the final note. The bass staff contains a bass line with a fermata over the final note. A large slur covers both staves.

(poco rit)

5

Andante

Handwritten musical notation for the first system. It features a treble clef, a circled 'p' dynamic marking, and a 4/8 time signature. The notation includes a series of chords: G major, F# minor, E-flat major, and D major. A large slur covers the first two measures.

Handwritten musical notation for the second system. It features a treble clef, a circled 'p' dynamic marking, and a series of chords: G major, F# minor, E-flat major, and D major. A large slur covers the first two measures.

Handwritten musical notation for the third system. It features a treble clef, a circled 'p' dynamic marking, and a series of chords: G major, F# minor, E-flat major, and D major. A large slur covers the first two measures.

rollwerk (N) appassionato

Handwritten musical score for the first system. It consists of a treble clef staff and a bass clef staff. The treble staff begins with a forte (ff) dynamic and a 4/4 time signature. The music features a series of notes with slurs and accents, including several octaves marked with the number '8'. The bass staff contains a few notes and rests. The system concludes with a double bar line and a fermata over the final note.

breit (aber nicht schleppend)

Handwritten musical score for the second system. It features a treble clef staff and a bass clef staff. The treble staff contains several measures of music with notes, slurs, and dynamic markings. The bass staff has fewer notes, with some rests. The system ends with a double bar line and a fermata.

Handwritten musical score for the third system. It features a treble clef staff and a bass clef staff. The treble staff contains several measures of music with notes, slurs, and dynamic markings. The bass staff has fewer notes, with some rests. The system ends with a double bar line and a fermata.

Handwritten musical notation for the first system. It consists of three staves: a treble clef staff at the top, an alto clef staff in the middle, and a bass clef staff at the bottom. The treble staff contains a melodic line with notes, slurs, and accidentals (sharps and flats). The alto staff contains a similar melodic line. The bass staff contains a bass line with notes and slurs. The system is divided into three measures by vertical bar lines.

Handwritten musical notation for the second system. It consists of three staves: a treble clef staff at the top, an alto clef staff in the middle, and a bass clef staff at the bottom. The treble staff contains a melodic line with notes, slurs, and accidentals. The alto staff contains a similar melodic line. The bass staff contains a bass line with notes and slurs. The system is divided into three measures by vertical bar lines.

Handwritten musical notation for the third system. It consists of three staves: a treble clef staff at the top, an alto clef staff in the middle, and a bass clef staff at the bottom. The treble staff contains a melodic line with notes, slurs, and accidentals. The alto staff contains a similar melodic line. The bass staff contains a bass line with notes and slurs. The system is divided into three measures by vertical bar lines.

Handwritten musical notation for the first system, consisting of three staves. The top staff contains notes with accidentals (sharps and flats) and slurs. The middle staff contains notes with accidentals and slurs. The bottom staff contains notes with accidentals and slurs.

Handwritten musical notation for the second system, consisting of three staves. The top staff contains notes with accidentals and slurs. The middle staff contains notes with accidentals and slurs. The bottom staff contains notes with accidentals and slurs.

Handwritten musical notation for the third system, consisting of three staves. The top staff contains notes with accidentals and slurs. The middle staff contains notes with accidentals and slurs. The bottom staff contains notes with accidentals and slurs.

put

frei (steigern)

arceli →

immer rascher

8

8

8

scroph (pau frei) wie ein Kadenz)

Handwritten musical score for the first system. It consists of three staves. The top staff is in treble clef, the middle in bass clef, and the bottom in bass clef. The time signature is 2/4. The music features a melodic line in the treble and bass staves, with a bass line in the bottom staff. There are dynamic markings 'p' and 'f' and a fermata over the final note.

Handwritten musical score for the second system. It consists of three staves. The notation is similar to the first system, with a melodic line in the treble and bass staves and a bass line in the bottom staff. There are dynamic markings 'p' and 'f' and a fermata over the final note.

Handwritten musical score for the third system. It consists of three staves. The notation is similar to the previous systems, with a melodic line in the treble and bass staves and a bass line in the bottom staff. There are dynamic markings 'p' and 'f' and a fermata over the final note.

Prestissimo

Handwritten musical score for the first system. The top staff is in treble clef and contains a cluster of notes. The middle staff is in bass clef, with the clef itself circled, and contains notes and a vertical line labeled "Cluster". The bottom staff is in bass clef and contains a single note.

Handwritten musical score for the second system. The top staff is in treble clef and contains a cluster of notes. The middle staff is in bass clef, with the clef itself circled, and contains notes. The bottom staff is in bass clef and contains a single note.

Handwritten musical score for the third system. The top staff is in treble clef and contains a cluster of notes. The middle staff is in bass clef, with the clef itself circled, and contains notes. The bottom staff is in bass clef and contains a single note.

Leute Lunga

G.P.

sehr ruhig - (flüchtig) (auf 6 Schläge)

(immer langsamer werden)

Handwritten musical notation for the first system. The treble staff contains a melodic line with a slur over the first two measures. The bass staff contains chords and a melodic line with a slur. The notation includes notes, rests, and accidentals.

Handwritten musical notation for the second system. The treble staff features three triplet markings over groups of notes. The bass staff contains chords and a melodic line. The notation includes notes, rests, and accidentals.

Handwritten musical notation for the third system. The treble staff features two triplet markings over groups of notes. The bass staff contains chords and a melodic line with triplet markings. The notation includes notes, rests, and accidentals.

Handwritten musical notation for the fourth system. The treble staff contains a melodic line with a slur. The bass staff contains chords and a melodic line with triplet markings. The notation includes notes, rests, and accidentals.

(ev. rit.)

Handwritten musical notation for the first system, featuring a treble and bass staff with notes and rests.

Handwritten musical notation for the second system, featuring a treble and bass staff with notes and rests.

so breit wie möglich —

Handwritten musical notation for the third system, featuring a treble and bass staff with notes and rests.

lunga

4 m

subito / soll
werk

Handwritten musical notation for the first system, consisting of three staves. The top staff contains several notes with accidentals (sharps and flats) and rests, some grouped by a large slur. The middle and bottom staves also contain notes and rests, with some accidentals. The notation is dense and appears to be a sketch or a working draft.

Handwritten musical notation for the second system, consisting of three staves. The top staff has notes with accidentals and rests. The middle staff contains notes with accidentals and rests, with some notes beamed together. The bottom staff has notes and rests. The notation is dense and appears to be a sketch or a working draft.

Handwritten musical notation for the third system, consisting of three staves. The top staff has notes with accidentals and rests. The middle staff contains notes with accidentals and rests, with some notes beamed together. The bottom staff has notes and rests. The notation is dense and appears to be a sketch or a working draft. There is a handwritten annotation "Lungia" above the top staff on the right side.