

**Notenheft**

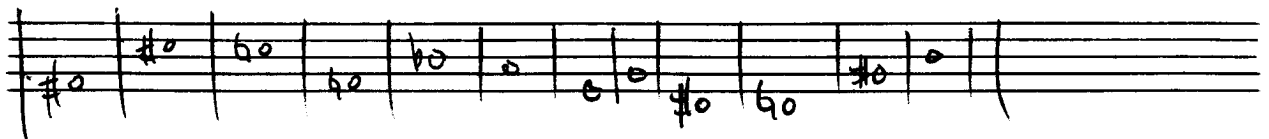
Sonate 1977 (Jazz)

für Flöte (Altflöte)

Piano + (E-Piano)

Bass und (ad. lib. dazu  
Schlagwerk 4 Posaunen)  
und  
Vibraphon)

Adolf Scherbaum



[Pedal] gilt auch für Vibraphon  
man Posaunen dabei)

(bedeutet  
Piano hier  
facet)  
(rechte Hand.)

Satz ①

Mood: assai

A

Flöte

Piano

Bass

Schlagwerk

Normal piano

(P)

(P) p133

Piano

Bass

Schlagwerk

(P)

Handwritten musical score for the first system. The top staff is a flute melody in G major, starting with a quarter note G, followed by eighth notes A, B, C, D, E, F#, G, and a quarter note G. The piano accompaniment consists of two staves: the upper staff has chords (G major, G major, G major) and the lower staff has bass notes (G, B, G). The bass line is a single staff with notes G, B, G.

Handwritten musical score for the second system. The top staff is a flute melody in G major, starting with a quarter note G, followed by eighth notes A, B, C, D, E, F#, G, and a quarter note G. The piano accompaniment consists of two staves: the upper staff has chords (G major, G major, G major) and the lower staff has bass notes (G, B, G). The bass line is a single staff with notes G, B, G.

B

Handwritten musical score for the first system, measures 1-2. The score is written on five staves. The top staff is a single treble clef staff with a melodic line. The second and third staves are a grand staff (treble and bass clefs) with piano accompaniment. The fourth and fifth staves are a grand staff (treble and bass clefs) with piano accompaniment. The music is in a key with one sharp (F#) and a 4/4 time signature. Measure 1 contains a melodic phrase with accents and slurs. Measure 2 continues the melodic phrase with a final sharp sign. Dynamics include *f* and *ff*. There are also some handwritten annotations like a double bar line with a slash and a sharp sign.

Handwritten musical score for the second system, measures 3-4. The score is written on five staves. The top staff is a single treble clef staff with a melodic line. The second and third staves are a grand staff (treble and bass clefs) with piano accompaniment. The fourth and fifth staves are a grand staff (treble and bass clefs) with piano accompaniment. The music is in a key with one sharp (F#) and a 4/4 time signature. Measure 3 contains a melodic phrase with accents and slurs. Measure 4 continues the melodic phrase with a final sharp sign. Dynamics include *f*, *ff*, and *ff*. There are also some handwritten annotations like a double bar line with a slash and a sharp sign.

Handwritten musical score for the first system. The top staff (flute) contains a complex melodic line with many beamed notes and accidentals. The piano accompaniment consists of a grand staff with chords in the right hand and bass notes in the left hand. The system is divided into three measures.

(C)

Handwritten musical score for the second system. The notation continues with similar complexity. A circled 'C' is written above the top staff. The piano accompaniment includes chords and bass notes. The system is divided into three measures.

Handwritten musical score for the first system. It consists of five staves. The top staff is for the Flute (Altflöte), marked with a circled 'f'. The second and third staves are for the Piano (E-Piano), with a circled 'f' at the beginning. The fourth staff is for the Bass, and the fifth staff is for the Drum set, marked with a circled 'f'. The music is in 4/4 time and features various rhythmic patterns, including eighth and sixteenth notes, and rests. There are several dynamic markings and accents throughout the system.

Handwritten musical score for the second system. It consists of five staves. The top staff is for the Flute (Altflöte), marked with a circled 'f'. The second and third staves are for the Piano (E-Piano), with a circled 'ff' at the beginning. The fourth staff is for the Bass, and the fifth staff is for the Drum set, marked with a circled 'ff'. The music continues with various rhythmic patterns and includes a section marked 'Solo' in the Flute part. There are several dynamic markings and accents throughout the system.

Handwritten musical score for the first system. It consists of three staves. The top staff is a grand staff with a treble clef and a bass clef, containing piano accompaniment. The middle staff is a single bass clef staff with a bass line. The bottom staff is a grand staff with a treble clef and a bass clef, which is mostly empty with some diagonal lines. The music is in 4/4 time and features chords and melodic lines in the piano part, and a rhythmic bass line.

(D)

Handwritten musical score for the second system. It consists of three staves. The top staff is a grand staff with a treble clef and a bass clef, containing piano accompaniment. The middle staff is a single bass clef staff with a bass line. The bottom staff is a grand staff with a treble clef and a bass clef, which is mostly empty with some diagonal lines. The music is in 4/4 time and features a solo section for the flute in the piano part, marked with 'Solo' and 'r r r'. The bass line continues with a rhythmic pattern.



Handwritten musical score for the first system. It consists of five staves. The top staff is a treble clef with a key signature of one sharp (F#). The second and third staves are grouped by a brace and contain piano accompaniment with chords and some melodic fragments. The fourth staff contains a melodic line with notes and rests. The fifth staff is a bass clef with rests. The system is divided into four measures.

(E)

Handwritten musical score for the second system. It consists of five staves. The top staff is a treble clef with a key signature of one flat (Bb). The second and third staves are grouped by a brace and contain piano accompaniment with chords and some melodic fragments. The fourth staff contains a melodic line with notes and rests. The fifth staff is a bass clef with rests. The system is divided into four measures.

Handwritten musical score for the first system, consisting of five staves. The top staff is in treble clef and contains a melodic line with notes and rests, including a circled '4#'. The second and third staves are grouped by a brace on the left and contain piano accompaniment with chords and rhythmic patterns. The fourth staff is in bass clef and contains a bass line with notes and rests. The fifth staff is empty. There are various annotations such as accents (^) and slurs throughout the score.

Handwritten musical score for the second system, consisting of five staves. The top staff is in treble clef and contains a melodic line with notes and rests, including a circled '4#'. The second and third staves are grouped by a brace on the left and contain piano accompaniment with chords and rhythmic patterns. The fourth staff is in bass clef and contains a bass line with notes and rests. The fifth staff is empty. There are various annotations such as accents (^) and slurs throughout the score.

Handwritten musical score for the first system. The top staff is for the flute, showing a melodic line with slurs and accents. The piano accompaniment consists of a grand staff with chords in the right hand and bass notes in the left hand. The system concludes with a fermata over the final notes.

F

CODA

Handwritten musical score for the second system. It continues the melodic and harmonic material from the first system. The piano accompaniment includes chords and bass lines. The system ends with a double bar line and repeat dots.

1.

5

Handwritten musical score for the first system, measures 1-5. The score is written on five staves. The top staff is for Flute, the middle two for Piano, the bottom for Bass, and the two empty staves are for other instruments. The piano part has a 'p' dynamic marking. The bass part has 'Solo' and 'dim' markings with a hairpin. A circled '5' is at the end of the system.

2. ( gut + dim - - - - -

4

Handwritten musical score for the second system, measures 1-6. The score is written on six staves. The top staff is for Flute, the middle two for Piano, the bottom for Bass, and the three empty staves are for other instruments. The piano part has a 'p' dynamic marking. The bass part has 'Solo' and 'gut + dim' markings with a hairpin. A circled '4' is at the end of the system.

langsam  
(ALT Flöte) klingend notiert

The first system of the handwritten musical score consists of four staves. The top staff is for the Flute (ALT Flöte), marked with a circled 'p' and a dynamic marking 'p <'. It contains a melodic line with notes including a sharp sign and a flat sign. The second staff is for the Piano, marked with a circled 'p' and a dynamic marking 'p'. It shows a chord progression with notes like #4, 5, 6, and 7. The third staff is for the Bass, marked with a circled 'p' and a dynamic marking 'p'. It contains a bass line with notes including a flat sign and a sharp sign. The fourth staff is for the Drums, marked with a circled 'p' and a dynamic marking 'p', showing a rhythmic pattern with 'x' marks. A large bracket on the left side groups the Piano, Bass, and Drum staves. The tempo 'langsam' and the instruction '(ALT Flöte) klingend notiert' are written above the Flute staff.

The second system of the handwritten musical score consists of four staves. The top staff is for the Flute, marked with a circled 'p' and a dynamic marking 'p'. It contains a melodic line with notes including a flat sign, a sharp sign, and a double sharp sign. The second staff is for the Piano, marked with a circled 'p' and a dynamic marking 'p'. It shows a chord progression with notes like #4, 5, 6, and 7. The third staff is for the Bass, marked with a circled 'p' and a dynamic marking 'p', showing a bass line with notes including a sharp sign and a flat sign. The fourth staff is for the Drums, marked with a circled 'p' and a dynamic marking 'p', showing a rhythmic pattern with 'x' marks. A large bracket on the left side groups the Piano, Bass, and Drum staves. The tempo 'langsam' and the instruction '(ALT Flöte) klingend notiert' are written above the Flute staff.

Handwritten musical score for the first system. It consists of five staves. The top staff is for the Flute (Altflöte), marked with a treble clef and a key signature of one flat. The second and third staves are for the Piano, marked with a grand staff (treble and bass clefs). The fourth staff is for the Bass, marked with a bass clef. The fifth staff is for the Drum set, marked with a bass clef. The music is in 4/4 time. The first measure of the Flute part starts with a forte (*fp*) dynamic and a slur over a series of eighth notes. The Piano part features chords with dynamics like *fp* and accents. The Bass part has a simple rhythmic pattern with dynamics like *f* and *fp*. The Drum part has a steady bass drum pattern with dynamics like *fp* and *f*. A circled number '7' is written at the end of the system.

Handwritten musical score for the second system, continuing the first system. It consists of five staves. The top staff is for the Flute (Altflöte), marked with a treble clef and a key signature of one flat. The second and third staves are for the Piano, marked with a grand staff (treble and bass clefs). The fourth staff is for the Bass, marked with a bass clef. The fifth staff is for the Drum set, marked with a bass clef. The music is in 4/4 time. The Flute part continues with a melodic line, marked with dynamics like *mp* and *f*. The Piano part features chords with dynamics like *mf* and *f*. The Bass part has a simple rhythmic pattern with dynamics like *mf* and *f*. The Drum part has a steady bass drum pattern with dynamics like *mf* and *f*.

Handwritten musical score for the first system. The top staff is for the Flute, marked with a circled 'K'. The middle two staves are for the Piano, marked with a circled 'P'. The bottom two staves are for the Bass and Drum set. The score is divided into two measures by a double bar line. The first measure contains complex chordal textures in the piano and bass parts, and a melodic line in the flute. The second measure continues the textures and includes a circled 'P' in the piano part.

Handwritten musical score for the second system. The top staff is for the Flute, marked with a circled 'K'. The middle two staves are for the Piano, marked with a circled 'P'. The bottom two staves are for the Bass and Drum set. The score is divided into three measures by double bar lines. The first measure shows the piano and bass parts with complex textures. The second measure continues these textures. The third measure features a melodic line in the flute and a circled 'P' in the piano part.

Handwritten musical score for the first system. It consists of five staves. The top staff is for the flute, with notes and slurs. The second staff is the piano part, with chords and dynamic markings. The third staff has a circled 'f' and notes. The fourth and fifth staves are for bass and drums, with rhythmic notation and dynamic markings.

Handwritten musical score for the second system. It includes a vocal line with lyrics: "baum quun tad", "(2te x gut -----)", and "E". The piano accompaniment continues with chords and dynamic markings like 'p'. The system ends with a circled 'E' in the top right corner.



*(frei)*

Da capo  
al  $\text{♩}$

CODA

(gut)

Handwritten musical score for the first system. It consists of three staves. The top staff is a grand staff (treble and bass clefs) with a piano accompaniment of chords and some melodic fragments. The middle staff contains a single melodic line with notes and rests. The bottom staff is a bass line with notes and rests. The music is in a key with one sharp (F#) and a 4/4 time signature.

Handwritten musical score for the second system. It consists of three staves. The top staff is a grand staff with a melodic line that includes triplets and a circled 'Fine' at the end. The middle staff is a grand staff with piano accompaniment. The bottom staff is a bass line. The word 'frei' is written above the first staff. Below the bottom staff, the text 'freies Solo (mit hartem Abschlag)' is written. The music is in a key with one sharp (F#) and a 4/4 time signature.

Satz 2

Altflöte (frei - langsam) *richtig notiert (zu G)*

(letzte + lange n.)

(auf 4 Halbnote) · sehr getragen

(Klingend notiert)

(E-Piano)

pp

p

p

p

Handwritten musical score for the first system. The top staff is for the flute, showing a melodic line with slurs and accents. The piano accompaniment consists of two staves: the upper staff has chords with a sharp sign, and the lower staff has a triplet of eighth notes. The bass line features a triplet of eighth notes with fingerings 1, 1, 1, 1.

Q

Handwritten musical score for the second system. The top staff is for the flute, showing a melodic line with slurs and accents. The piano accompaniment consists of two staves: the upper staff has chords with a flat sign, and the lower staff has a triplet of eighth notes. The bass line features a triplet of eighth notes with fingerings 1, 1, 1, 1.

Handwritten musical score for the first system, measures 1-2. The score is written in G major (one sharp) and 4/4 time. It includes staves for Flute, Piano, Bass, and Drum Set. The piano part features a triplet in measure 1 and a fermata in measure 2. The bass part has a triplet in measure 1 and a fermata in measure 2. The drum set part has a pattern of quarter notes in measure 1 and a pattern of quarter notes in measure 2.

Handwritten musical score for the second system, measures 3-4. The score is written in G major (one sharp) and 4/4 time. It includes staves for Flute, Piano, Bass, and Drum Set. The piano part features a fermata in measure 3 and a circled 'R' in measure 4. The bass part has a fermata in measure 3 and a circled 'R' in measure 4. The drum set part has a pattern of quarter notes in measure 3 and a pattern of quarter notes in measure 4.

Bass Solo *f*

Handwritten musical notation for the first system, featuring a bass clef, a treble clef, and various notes and rests. Dynamics include 'up', 'f', and '(P)'.

Handwritten musical notation for the second system, featuring a bass clef, a treble clef, and various notes and rests. Dynamics include 'f' and '(P)'.

Handwritten musical notation for the third system, featuring a bass clef, a treble clef, and various notes and rests. Dynamics include 'f'.

Handwritten musical notation for the fourth system, featuring a bass clef, a treble clef, and various notes and rests. Dynamics include '(P)', '(S)', and '(poco rit)'.

*al*  
**Fine!**