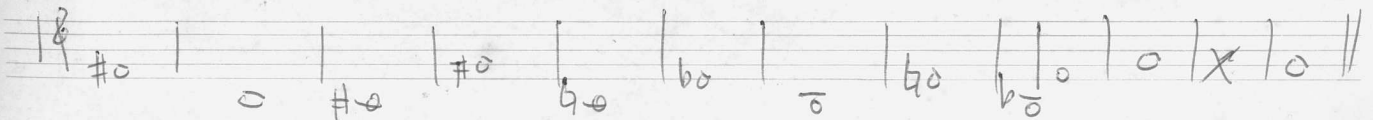


Fantasie für  
Orgel 1978  
Adolf Scherbaum  
(Band 1)

(Ihr Herz schreit zu dem Herrn -  
Du Mauer der Tochter Zion, laß,  
einem Bäume gleich, Tränen rinnen  
Tag und Nacht; gönne dir keine Rast,  
deinem Augapfel keine Ruhe.



F 153 Scherbaum 1162

Adolf Scherbaum, Fantasie für Orgel, SWV 1162 (1978)  
© 2010 Inge Adamiker-Scherbaum. Alle Rechte vorbehalten.

MUSIKSAMMLUNG  
ÖSTERR.  
NATIONALBIBLIOTHEK

(p) ruhig (mit gr. Ruhe (fließende Achtel))

Handwritten musical notation for the first system. The treble clef staff begins with a 6/8 time signature and a circled 'p' dynamic marking. The first measure contains a quarter note G#4. The second measure contains a quarter note G#4 and a quarter note F#4. The third measure contains a quarter note G4 and a quarter note F#4. The fourth measure contains a quarter note G4 and a quarter note F#4. The bass clef staff begins with a circled 'p' dynamic marking. The first measure contains a quarter note G3. The second measure contains a quarter note G#3 and a quarter note F#3. The third measure contains a quarter note G3 and a quarter note F#3. The fourth measure contains a quarter note G3 and a quarter note F#3.

Handwritten musical notation for the second system. The treble clef staff contains a quarter note G#4, a quarter note G#4, a quarter note G#4, and a quarter note G#4. The bass clef staff contains a quarter note G3, a quarter note G#3, a quarter note G#3, and a quarter note G3.

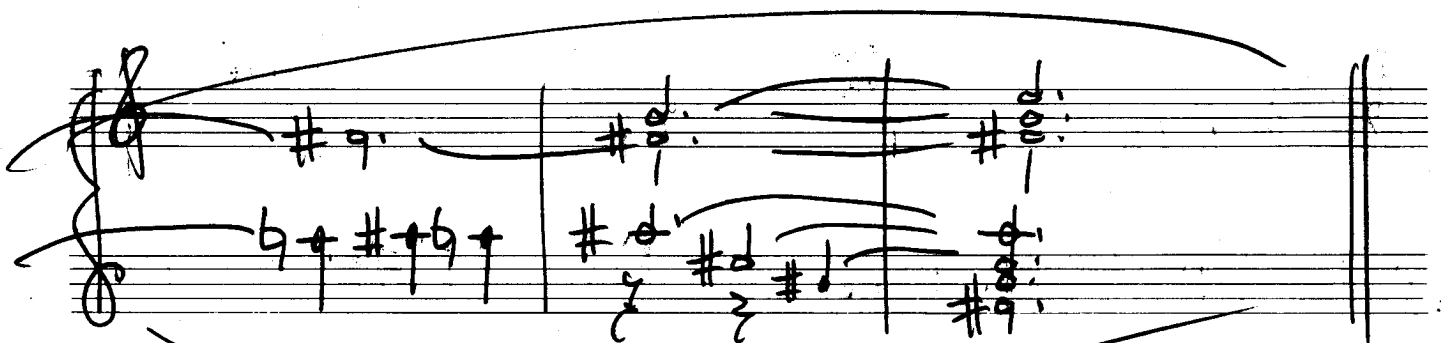
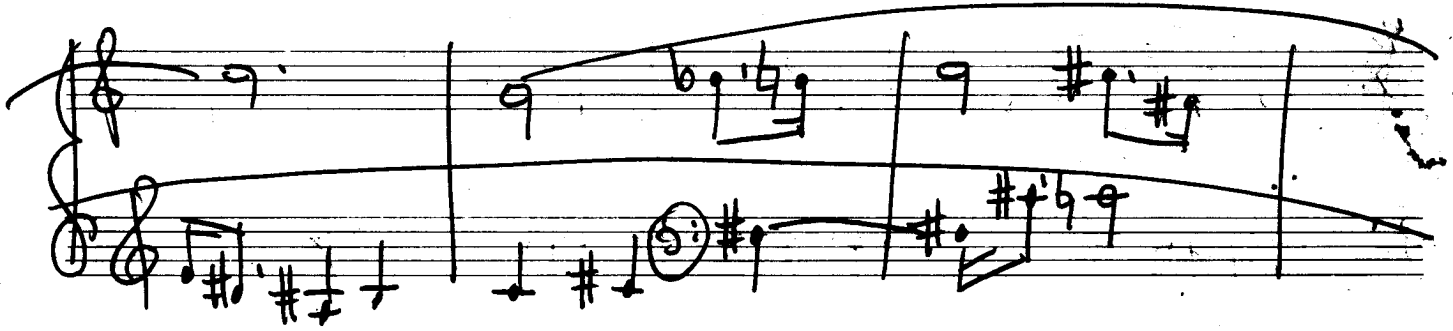
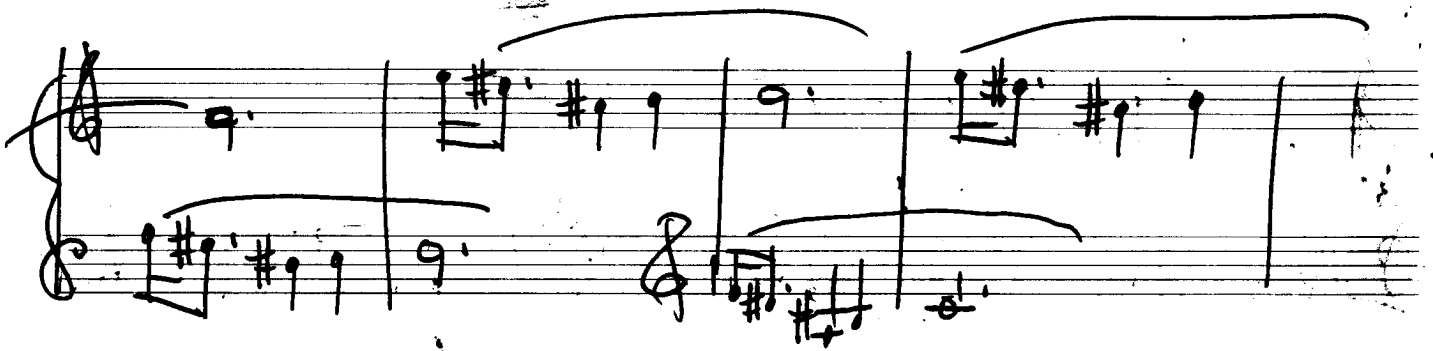
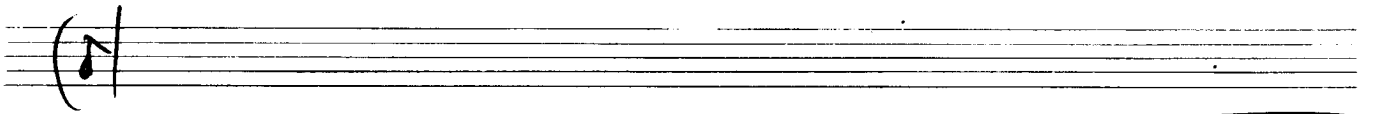
Handwritten musical notation for the third system. The treble clef staff contains a quarter note G#4, a quarter note G#4, a quarter note G#4, and a quarter note G#4. The bass clef staff contains a quarter note G3, a quarter note G#3, a quarter note G#3, and a quarter note G3.

Handwritten musical notation for the first system. The treble staff contains a melodic line with notes marked with sharps and flats, and a slur over the first two measures. The bass staff contains a bass line with notes marked with flats and a slur over the first two measures. The system is divided into two measures by a bar line.

Handwritten musical notation for the second system. The treble staff contains a melodic line with notes marked with flats and a slur over the first two measures. The bass staff contains a bass line with notes marked with flats and a slur over the first two measures. The system is divided into two measures by a bar line.

Handwritten musical notation for the third system. The treble staff contains a melodic line with notes marked with sharps and flats, and a slur over the first two measures. The bass staff contains a bass line with notes marked with flats and a slur over the first two measures. The system is divided into two measures by a bar line.

Handwritten musical notation for the fourth system. The treble staff contains a melodic line with notes marked with sharps and flats, and a slur over the first two measures. The bass staff contains a bass line with notes marked with sharps and flats, and a slur over the first two measures. The system is divided into two measures by a bar line.



Handwritten musical notation for the first system. The treble staff contains notes with accidentals (sharps and naturals) and a circled note. The bass staff contains notes with accidentals (sharps, naturals, and flats) and a long slur.

Handwritten musical notation for the second system. The treble staff contains notes with accidentals (sharps and naturals) and a circled note. The bass staff contains notes with accidentals (flats) and a long slur.

Handwritten musical notation for the third system. The treble staff contains notes with accidentals (flats, sharps, and naturals) and a circled note. The bass staff contains notes with accidentals (sharps and naturals) and a long slur.

Handwritten musical notation for the fourth system. The treble staff contains notes with accidentals (naturals, flats, and sharps) and a circled note. The bass staff contains notes with accidentals (sharps and naturals) and a long slur. The system concludes with a double bar line. The instruction "(poco rit)" is written above the treble staff.

Lento

Handwritten musical notation for the first system. The treble clef staff contains notes with accidentals (b, d) and dynamic markings (p). The bass clef staff contains notes with accidentals (b, d). A large slur covers the first two measures of both staves.

Handwritten musical notation for the second system. The treble clef staff contains notes with accidentals (b, d) and dynamic markings (p). The bass clef staff contains notes with accidentals (b, d). A large slur covers the first two measures of both staves.

Handwritten musical notation for the third system. The treble clef staff contains notes with accidentals (b, d) and dynamic markings (p). The bass clef staff contains notes with accidentals (b, d). A large slur covers the first two measures of both staves.

Handwritten musical notation for the fourth system. The treble clef staff contains notes with accidentals (b, d) and dynamic markings (p). The bass clef staff contains notes with accidentals (b, d). A large slur covers the first two measures of both staves.

*rubato (appassionata) cresc (frei)*

Handwritten musical notation for the first system. It features a treble clef and a bass clef. The time signature is 4/4. A circled 'FFF' dynamic marking is present. The music includes a melodic line with triplets and a bass line with chords and slurs.

*qued.*

Handwritten musical notation for the second system. It features a treble clef and a bass clef. The music includes a melodic line with slurs and a bass line with chords and slurs.

*qued.*

Handwritten musical notation for the third system. It features a treble clef and a bass clef. The music includes a melodic line with slurs and a bass line with chords and slurs.

Handwritten musical notation for the fourth system. It features a treble clef and a bass clef. The music includes a melodic line with slurs and a bass line with chords and slurs.

7

rit

Adagio

Handwritten musical notation for the first system. It consists of two staves. The top staff is in treble clef and the bottom in bass clef. The music is in 4/4 time, indicated by a circled '4'. The notation includes various notes, accidentals (sharps and flats), and rests. A large slur covers the second and third measures of the system.

Handwritten musical notation for the second system. It consists of two staves. The top staff is in treble clef and the bottom in bass clef. The music is in common time, indicated by a circled 'C'. The notation includes various notes, accidentals, and rests. A large slur covers the second and third measures of the system.

Adagio (D)

Handwritten musical notation for the third system. It consists of two staves. The top staff is in treble clef and the bottom in bass clef. The music is in D major, indicated by a circled 'D'. The notation includes various notes, accidentals, and rests. A large slur covers the entire system.

(poco rit)

Handwritten musical notation for the fourth system. It consists of two staves. The top staff is in treble clef and the bottom in bass clef. The music is in D major, indicated by a circled 'D'. The notation includes various notes, accidentals, and rests. A large slur covers the entire system.



Lento (Maestoso)

Handwritten musical notation for the first system. It consists of two staves. The top staff is in treble clef and the bottom staff is in bass clef. The music is in 4/4 time. The key signature is three sharps (F#, C#, G#), indicated by a circled '###' in the bass staff. The notation includes various notes, accidentals, and phrasing slurs.

Handwritten musical notation for the second system. It consists of two staves. The top staff is in treble clef and the bottom staff is in bass clef. The music continues with notes and accidentals. A double bar line is followed by the marking 'G.P.' (Grave). The system concludes with a fermata over the final notes.

recel. →

Handwritten musical notation for the third system. It consists of two staves. The top staff is in treble clef and the bottom staff is in bass clef. The music features a triplet of notes in the bass staff, followed by a fermata over the final notes of the system.

Handwritten musical notation for the fourth system. It consists of two staves. The top staff is in treble clef and the bottom staff is in bass clef. The music features a fermata over the final notes of the system, with a 'ff' (fortissimo) dynamic marking in the bass staff.

sehr rasch (erregt)

Handwritten musical notation for the first system. It features a treble clef and a circled key signature of two sharps (F# and C#). The time signature is 3/4. The notation includes a melodic line with a triplet of eighth notes and a chordal accompaniment consisting of two chords, each with a wavy line underneath.

Handwritten musical notation for the second system. It features a treble clef and a key signature of two sharps (F# and C#). The notation includes a melodic line with a triplet of eighth notes and a chordal accompaniment consisting of two chords, each with a wavy line underneath.

Handwritten musical notation for the third system. It features a treble clef and a key signature of two sharps (F# and C#). The notation includes a melodic line with a triplet of eighth notes and a chordal accompaniment consisting of two chords, each with a wavy line underneath.

Handwritten musical notation for the fourth system. It features a treble clef and a key signature of two sharps (F# and C#). The notation includes a melodic line with a triplet of eighth notes and a chordal accompaniment consisting of two chords, each with a wavy line underneath.

*sehr legato (Töne liegen lassen) so möglich)*

Handwritten musical notation for the first system. It consists of two staves: a treble staff on top and a bass staff on the bottom. The treble staff contains two measures of music. The first measure has a slur over a group of notes, including a sharp sign. The second measure has a slur over a group of notes, including a flat sign. The bass staff contains two measures of music. The first measure has a slur over a group of notes, including a sharp sign. The second measure has a slur over a group of notes, including a flat sign.

Handwritten musical notation for the second system. It consists of two staves: a treble staff on top and a bass staff on the bottom. The treble staff contains two measures of music. The first measure has a slur over a group of notes. The second measure has a slur over a group of notes. The bass staff contains two measures of music. The first measure has a slur over a group of notes. The second measure has a slur over a group of notes.

Handwritten musical notation for the third system. It consists of two staves: a treble staff on top and a bass staff on the bottom. The treble staff contains two measures of music. The first measure has a slur over a group of notes, including a sharp sign. The second measure has a slur over a group of notes, including a flat sign. The bass staff contains two measures of music. The first measure has a slur over a group of notes, including a sharp sign. The second measure has a slur over a group of notes, including a flat sign.

Handwritten musical notation for the fourth system. It consists of two staves: a treble staff on top and a bass staff on the bottom. The treble staff contains two measures of music. The first measure has a slur over a group of notes, including a flat sign. The second measure has a slur over a group of notes, including a sharp sign. The bass staff contains two measures of music. The first measure has a slur over a group of notes, including a sharp sign. The second measure has a slur over a group of notes, including a flat sign.



(frei (langsameres beginne / accel).

Handwritten musical notation for the first system, featuring a treble clef, a key signature of one sharp (F#), and a 6/8 time signature. The right hand plays a series of sixteenth-note chords, while the left hand plays a simple bass line with dotted rhythms. A circled '1' is written above the first measure of the right hand.

Handwritten musical notation for the second system, continuing the piece. The right hand continues with sixteenth-note chords, and the left hand maintains a steady bass line with dotted rhythms.

Handwritten musical notation for the third system. The right hand continues with sixteenth-note chords. The left hand has a dotted rhythm. The word "(poco rit)" is written in the middle of the system.

Handwritten musical notation for the fourth system, marked "Lento". The right hand features a more complex chordal texture with some triplets. The left hand has a bass line with a prominent dotted rhythm and some accidentals.

Blasch Funebre

Leute / große Flöte →

Handwritten musical notation for the first system. It consists of two staves. The upper staff is in treble clef and contains a melodic line with a circled 'G.P.' and 'pp' dynamic marking. The lower staff is in bass clef and contains a bass line with complex chordal figures. A large slur covers both staves across two measures.

Handwritten musical notation for the second system. It consists of two staves. The upper staff is in treble clef and contains a melodic line with a circled 'G.P.' and 'pp' dynamic marking. The lower staff is in bass clef and contains a bass line with complex chordal figures. A large slur covers both staves across two measures.

Handwritten musical notation for the third system. It consists of two staves. The upper staff is in treble clef and contains a melodic line with a circled 'G.P.' and 'pp' dynamic marking. The lower staff is in bass clef and contains a bass line with complex chordal figures. A large slur covers both staves across three measures.

Handwritten musical notation for the fourth system. It consists of two staves. The upper staff is in treble clef and contains a melodic line with a circled 'G.P.' and 'pp' dynamic marking. The lower staff is in bass clef and contains a bass line with complex chordal figures. A large slur covers both staves across four measures.

Handwritten musical notation for the first system, featuring a treble clef, a key signature of one sharp (F#), and a 4/4 time signature. The melody is written on a single staff with a long slur over three measures. The bass staff contains chordal accompaniment with some handwritten annotations.

Handwritten musical notation for the second system, featuring a treble clef, a key signature of one sharp (F#), and a 4/4 time signature. The melody is written on a single staff with a long slur over three measures. A circled '6' is written in the left margin. The bass staff contains chordal accompaniment with some handwritten annotations.

Handwritten musical notation for the third system, featuring a treble clef, a key signature of one sharp (F#), and a 4/4 time signature. The melody is written on a single staff with a long slur over three measures. A circled '7' is written in the left margin. The bass staff contains chordal accompaniment with some handwritten annotations.

Handwritten musical notation for the fourth system, featuring a treble clef, a key signature of one sharp (F#), and a 4/4 time signature. The melody is written on a single staff with a long slur over three measures. A circled '8' is written in the left margin. The bass staff contains chordal accompaniment with some handwritten annotations.

*immer schwerer werden*

*groß. rit*

*gr. part.*

Handwritten musical score for guitar, first system. It features a grand staff with treble and bass clefs. The music is in G major (one sharp) and 3/4 time. The first measure has a treble clef with a G4 and a bass clef with a G2. The second measure has a treble clef with a G4 and a bass clef with a G2. The third measure has a treble clef with a G4 and a bass clef with a G2. The fourth measure has a treble clef with a G4 and a bass clef with a G2. The piece ends with a double bar line and a repeat sign.

*rit. largo*

Handwritten musical score for guitar, second system. It features a grand staff with treble and bass clefs. The music is in G major (one sharp) and 3/4 time. The first measure has a treble clef with a G4 and a bass clef with a G2. The second measure has a treble clef with a G4 and a bass clef with a G2. The piece ends with a double bar line and a repeat sign. There is a large scribble over the second measure.

*Erster*  
November  
1978

*Adolf Scherbaum*



Fantasie für

Orgel 1978

Adolf Scherbaum

(Band 2)

(1) *Maestoso*

*subito (frei)* 6 8 (ff) # 9. 3 7 #

9. #

# 9. #

9. # 9. #

*Spoco out*

(1) auf 3 dringend - (aue. - bis Adagio)

Handwritten musical notation for the first system. The treble clef staff contains a half note G4 with a sharp sign, followed by a quarter note A4 with a sharp sign, a quarter note B4 with a sharp sign, and a quarter note C5. The bass clef staff contains a half note G3 with a flat sign, followed by a quarter note A3 with a sharp sign, a quarter note B3 with a sharp sign, and a quarter note C4. Above the treble clef staff, there are markings '6' and '(3)' with a horizontal line underneath. Above the bass clef staff, there are markings '8' and '(4)' with a horizontal line underneath. The system concludes with a double bar line.

Handwritten musical notation for the second system. The treble clef staff contains a half note G4 with a sharp sign, followed by a quarter note A4 with a sharp sign, a quarter note B4 with a sharp sign, and a quarter note C5. The bass clef staff contains a half note G3 with a sharp sign, followed by a quarter note A3 with a sharp sign, a quarter note B3 with a sharp sign, and a quarter note C4. The system concludes with a double bar line.

Handwritten musical notation for the third system. The treble clef staff contains a half note G4 with a sharp sign, followed by a triplet of eighth notes (A4, B4, C5) with a sharp sign, and a quarter note D5 with a sharp sign. The bass clef staff contains a half note G3 with a sharp sign, followed by a quarter note A3 with a sharp sign, a quarter note B3 with a sharp sign, and a quarter note C4. The system concludes with a double bar line.

cut ----

Handwritten musical notation for the fourth system. The treble clef staff contains a half note G4 with a sharp sign, followed by a quarter note A4 with a sharp sign, a quarter note B4 with a sharp sign, and a quarter note C5. The bass clef staff contains a half note G3 with a sharp sign, followed by a quarter note A3 with a sharp sign, a quarter note B3 with a sharp sign, and a quarter note C4. The system concludes with a double bar line.

*Adagio* (♩) *Ad libit*

Handwritten musical notation for the first system. The treble clef staff contains a series of notes with slurs and accents, including a circled 'p' and a circled 'f'. The bass clef staff contains notes with slurs and accents. There are also some handwritten annotations above the treble staff, possibly indicating fingerings or articulation.

Handwritten musical notation for the second system. The treble clef staff shows a sequence of notes with slurs and accents. The bass clef staff contains notes with slurs and accents. There are also some handwritten annotations above the treble staff, possibly indicating fingerings or articulation.

Handwritten musical notation for the third system. The treble clef staff contains notes with slurs and accents. The bass clef staff contains notes with slurs and accents. There are also some handwritten annotations above the treble staff, possibly indicating fingerings or articulation.

*poco rit*

Handwritten musical notation for the fourth system. The treble clef staff contains notes with slurs and accents. The bass clef staff contains notes with slurs and accents. There are also some handwritten annotations above the treble staff, possibly indicating fingerings or articulation.

*♩ = 1 Lento*

ppp

G.P.

*quadrato (oder frei bewegt)*

777

*quadr.*

Presto

*rit* Adagio

Handwritten musical notation for the first system. The treble clef staff contains a series of notes, including a half note, a quarter note, and a group of sixteenth notes. The bass clef staff contains a triplet of eighth notes followed by other notes. A large slur spans across both staves.

Presto

ADAGIO

Handwritten musical notation for the second system. The treble clef staff has a large slur covering several measures. The bass clef staff has notes with a circled 'rit' marking above them. The system ends with a double bar line.

Maestoso

Handwritten musical notation for the third system. The treble clef staff has a circled 'rit' marking. The bass clef staff contains notes with various accidentals. The system ends with a double bar line.

Handwritten musical notation for the fourth system. The treble clef staff has notes with various accidentals. The bass clef staff has notes with a circled 'rit' marking. The system ends with a double bar line.

Adagio (♩)

Handwritten musical notation for the first system of 'Adagio'. It consists of two staves. The upper staff is in treble clef with a key signature of one flat (B-flat) and a time signature of 8/8. The lower staff is in bass clef. The music features a melodic line in the upper staff with various accidentals (sharps, flats, naturals) and a bass line with rests. A dynamic marking 'pp' is present in the lower staff. A large slur covers the entire system.

Handwritten musical notation for the second system of 'Adagio'. It consists of two staves. The upper staff is in treble clef with a key signature of one flat (B-flat) and a time signature of 8/8. The lower staff is in bass clef. The music features a melodic line in the upper staff with various accidentals and a bass line with notes and rests. A large slur covers the entire system.

Maestoso (quadrato)

Handwritten musical notation for the first system of 'Maestoso'. It consists of two staves. The upper staff is in treble clef with a key signature of one sharp (F-sharp) and a time signature of 4/4. The lower staff is in bass clef. The music features a melodic line in the upper staff with various accidentals and a bass line with notes and rests. A circled key signature of two sharps (F-sharp, C-sharp) is present in the lower staff.

Handwritten musical notation for the second system of 'Maestoso'. It consists of two staves. The upper staff is in treble clef with a key signature of one flat (B-flat) and a time signature of 4/4. The lower staff is in bass clef. The music features a melodic line in the upper staff with various accidentals and a bass line with notes and rests. A circled key signature of one sharp (F-sharp) is present in the lower staff. The system ends with a double bar line and the marking 'gr.'.



accel. — bis Presto

Handwritten musical notation for the first system. It features a treble clef and a 4/4 time signature. A circled 'p' indicates a piano dynamic. The music consists of a melodic line with a slur and a triplet of eighth notes, and a bass line with a similar triplet. A fermata is placed over the end of the melodic line.

Handwritten musical notation for the second system. It shows two staves with a treble clef and a common time signature. The music features a melodic line with a slur and a triplet of eighth notes, and a bass line with a similar triplet. A fermata is placed over the end of the melodic line.

Handwritten musical notation for the third system. It features a treble clef and a common time signature. A circled 'p' indicates a piano dynamic. The music consists of a melodic line with a slur and a triplet of eighth notes, and a bass line with a similar triplet. A fermata is placed over the end of the melodic line.

Handwritten musical notation for the fourth system. It features a treble clef and a common time signature. A circled 'p' indicates a piano dynamic. The music consists of a melodic line with a slur and a triplet of eighth notes, and a bass line with a similar triplet. A fermata is placed over the end of the melodic line.

Adolf Scherbaum (1878-1978)

Handwritten musical notation for the first system. The treble clef staff contains two measures of chords in G major. The bass clef staff contains a triplet of eighth notes in the first measure, followed by a whole note in the second measure. A circled number '77' is written above the first measure of the bass line.

Handwritten musical notation for the second system. The treble clef staff contains two measures of chords in G major. The bass clef staff contains a triplet of eighth notes in the first measure, followed by a whole note in the second measure.

Handwritten musical notation for the third system. The treble clef staff contains two measures of chords in G major. The bass clef staff contains a triplet of eighth notes in the first measure, followed by a whole note in the second measure.

Handwritten musical notation for the fourth system. The treble clef staff contains two measures of chords in G major. The bass clef staff contains a triplet of eighth notes in the first measure, followed by a whole note in the second measure.

Handwritten musical notation for the first system. The treble clef staff contains three measures of chords with accents above them. The bass clef staff contains a melodic line with a slur and a sharp sign.

Handwritten musical notation for the second system. The treble clef staff shows chords with accents. The bass clef staff shows a melodic line with a slur.

Handwritten musical notation for the third system. The treble clef staff features a triplet of notes. The bass clef staff has chords with a slur.

Handwritten musical notation for the fourth system. The treble clef staff has a melodic line with a slur and a flat sign. The bass clef staff has chords with a slur.

(Zet gut)

Adagio

Handwritten musical score for the first system. The treble clef part contains several chords and melodic lines, with some notes circled. The bass clef part has a long note with a fermata. Dynamic markings include *pp* and *ppp*. The word "Adagio" is written at the top left. There are some scribbles and corrections in the first few measures.

lunga

lento (Funeraria)

Handwritten musical score for the second system. It includes the tempo marking "lento (Funeraria)" and performance instructions: "auf sehr langsame", "3 Schläge", and "stündige". There are circled notes and a circled *pp* marking. The word "Reigen" is written below the first measure. The notation includes a treble clef with notes and rests, and a bass clef with chords. The key signature has one sharp (F#).

Handwritten musical score for the third system. The treble clef part features a melodic line with a long slur over it. The bass clef part has chords. A circled *pp* marking is present. The key signature has one sharp (F#).

Handwritten musical score for the fourth system. Similar to the previous system, it shows a melodic line in the treble clef and chords in the bass clef. The key signature has one sharp (F#).

Handwritten musical notation for the first system. The upper staff is in treble clef with a circled *p* dynamic marking. The lower staff is in bass clef. The music consists of two staves with notes and chords, including accidentals like sharps and flats.

Handwritten musical notation for the second system. The upper staff is in treble clef with a circled *mf* dynamic marking. The lower staff is in bass clef. The music consists of two staves with notes and chords.

Handwritten musical notation for the third system. The upper staff is in treble clef with a circled *f* dynamic marking. The lower staff is in bass clef. The music consists of two staves with notes and chords. The text "immer langsamer werden" is written below the bass staff.

Handwritten musical notation for the fourth system. The upper staff is in treble clef with a circled *ff* dynamic marking. The lower staff is in bass clef. The music consists of two staves with notes and chords.

immer noch breiter werden -

lunga

1978 Ing  
1. November

Adolf  
Scherbaum

Fantasie für

Orgel

1978

Adolf Scherbaum

Band (3)

Schlussstück.



oda breik

(1)

*Lento*

Mandsi  
funebre

Handwritten musical notation for the first system. The treble clef staff begins with a circled 'p' dynamic marking. The melody consists of a half note G#4, a quarter note A4, a half note B4, and a quarter note C5, all beamed together. This is followed by a half note D5, a quarter note E5, and a half note F#5, also beamed together. The piece concludes with a double bar line and a repeat sign. The bass clef staff provides a complex accompaniment with various chords and intervals.

Handwritten musical notation for the second system. The treble clef staff begins with a circled 'mp' dynamic marking. The melody consists of a half note G#4, a quarter note A4, a half note B4, and a quarter note C5, all beamed together. This is followed by a half note D5, a quarter note E5, and a half note F#5, also beamed together. The piece concludes with a double bar line and a repeat sign. The bass clef staff provides a complex accompaniment with various chords and intervals.

Handwritten musical notation for the third system. The treble clef staff begins with a circled 'p' dynamic marking. The melody consists of a half note G#4, a quarter note A4, a half note B4, and a quarter note C5, all beamed together. This is followed by a half note D5, a quarter note E5, and a half note F#5, also beamed together. The piece concludes with a double bar line and a repeat sign. The bass clef staff provides a complex accompaniment with various chords and intervals.

Handwritten musical notation for the first system. The treble clef staff contains notes with a slur over them, including a circled 'p' dynamic marking. The bass clef staff contains a sequence of notes with accidentals:  $b, \sharp, \flat, \sharp, \flat, \sharp, \flat, \sharp$ .

Handwritten musical notation for the second system. The treble clef staff continues the melodic line with notes and accidentals. The bass clef staff contains notes with accidentals:  $\sharp, \flat, \sharp, \flat, \sharp, \flat, \sharp, \flat$ .

Handwritten musical notation for the third system, marked "Lento". The treble clef staff features a 3/4 time signature and notes with a circled 'p' dynamic marking. The bass clef staff contains notes with accidentals:  $\sharp, \flat, \sharp, \flat, \sharp, \flat, \sharp, \flat$ .

accel,

Handwritten musical notation for the first system. The treble staff contains a sequence of notes: a quarter note G, a quarter note A, a quarter note B-flat, a quarter note B, a quarter note C, and a quarter note D, all under a slur. The bass staff contains a sequence of notes: a quarter note G, a quarter note A, a quarter note B-flat, a quarter note B, a quarter note C, and a quarter note D, all under a slur. There are also some handwritten markings above the notes, possibly indicating dynamics or articulation.

sehr bewegt (bewegt)

Handwritten musical notation for the second system. The treble staff begins with a 3/4 time signature and a circled 'ff' dynamic marking. The first measure contains a triplet of eighth notes: B-flat, A, and G. The bass staff contains a sequence of notes: a quarter note G, a quarter note A, a quarter note B-flat, and a quarter note B, all under a slur.

Handwritten musical notation for the third system. The treble staff contains a sequence of notes: a quarter note B-flat, a quarter note A, a quarter note G, and a quarter note F, all under a slur. The bass staff contains a sequence of notes: a quarter note G, a quarter note A, a quarter note B-flat, and a quarter note B, all under a slur.

Handwritten musical notation for the fourth system. The treble staff contains a sequence of notes: a quarter note B, a quarter note C, a quarter note D, and a quarter note E, all under a slur. The bass staff contains a sequence of notes: a quarter note G, a quarter note A, a quarter note B, and a quarter note C, all under a slur.

Handwritten musical notation for the first system. The top staff is in treble clef and the bottom staff is in bass clef. A long slur covers the top staff across four measures. The first measure of the top staff contains a triplet of eighth notes. The bottom staff contains a series of chords and a long horizontal line.

*sehr legato*

Handwritten musical notation for the second system. The top staff is in treble clef and the bottom staff is in bass clef. The instruction *sehr legato* is written above the first measure. The top staff has a melodic line with a slur over two measures. The bottom staff has a rhythmic accompaniment.

Handwritten musical notation for the third system. The top staff is in treble clef and the bottom staff is in bass clef. The top staff has a melodic line with a slur over two measures. The bottom staff has a rhythmic accompaniment.

Handwritten musical notation for the fourth system. The top staff is in treble clef and the bottom staff is in bass clef. The top staff has a melodic line with a slur over two measures. The bottom staff has a rhythmic accompaniment.

Handwritten musical notation for the first system, featuring treble and bass staves with notes, slurs, and accidentals.

Handwritten musical notation for the second system, including treble and bass staves with notes, slurs, and accidentals.

Handwritten musical notation for the third system, showing treble and bass staves with notes, slurs, and accidentals.

Handwritten musical notation for the fourth system, including treble and bass staves with notes, slurs, and accidentals.

allmählich immer langsamer

Maestoso

(1) Adagio (misterioso)

Handwritten musical notation for the first system. It features a treble clef, a key signature of one flat (B-flat), and a 6/8 time signature. The notation includes a melodic line in the treble and a bass line with various accidentals and a fermata.

Handwritten musical notation for the second system. It shows a long melodic line in the treble with a fermata and a "poco rit." marking below the staff.

Adagio

Handwritten musical notation for the third system. It includes a circled treble clef, a 4/4 time signature, and complex rhythmic markings with accents and slurs.

Handwritten musical notation for the fourth system, continuing the complex rhythmic and melodic patterns from the previous system.



lento

Handwritten musical notation for the first system. The treble clef staff begins with a circled *pp* dynamic marking. The music consists of several measures with notes and rests, including a circled *pp* marking. The bass clef staff contains notes and rests. There are some handwritten annotations like '3 4' and '3 7' above the treble staff.

Handwritten musical notation for the second system. The treble clef staff has notes and rests, with handwritten annotations '3 4' and '3 7' above. The bass clef staff contains notes and rests.

Handwritten musical notation for the third system. The treble clef staff has notes and rests, with handwritten annotations '3 4' and '3 7' above. The bass clef staff contains notes and rests.

Handwritten musical notation for the fourth system. The treble clef staff has notes and rests, with handwritten annotations '3 4' and '3 7' above. The bass clef staff contains notes and rests.

(A) oder dissonant / ruhig

Handwritten musical notation for the first system. The treble clef staff contains a whole note chord (G4, B4, D5) followed by a half note chord (G4, B4, D5) and a dotted half note (D5). The bass clef staff contains a whole note chord (G3, B3, D4) followed by a half note chord (G3, B3, D4) and a dotted half note (D4). A slur covers the first two measures of the bass staff.

Handwritten musical notation for the second system. The treble clef staff contains a whole note chord (G#4, B4, D5) followed by a half note chord (G#4, B4, D5) and a dotted half note (D5). The bass clef staff contains a whole note chord (G#3, B3, D4) followed by a half note chord (G#3, B3, D4) and a dotted half note (D4). A slur covers the first two measures of the bass staff.

Handwritten musical notation for the third system. The treble clef staff contains a whole note chord (G4, B4, D5) followed by a half note chord (G#4, B4, D5) and a dotted half note (D5). The bass clef staff contains a whole note chord (G3, B3, D4) followed by a half note chord (G3, B3, D4) and a dotted half note (D4). A slur covers the first two measures of the bass staff. A circled '5:' is written above the final measure of the treble staff.

Handwritten musical notation for the fourth system. The treble clef staff contains a whole note chord (G#4, B4, D5) followed by a half note chord (G#4, B4, D5) and a dotted half note (D5). The bass clef staff contains a whole note chord (G#3, B3, D4) followed by a half note chord (G#3, B3, D4) and a dotted half note (D4). A slur covers the first two measures of the bass staff.

Handwritten musical notation for the first system. The top staff is in treble clef and the bottom staff is in bass clef. The key signature has two sharps (F# and C#). The notation includes several notes with stems, some beamed together, and accidentals. There are also some markings that look like '9' or 'b' below the notes.

Handwritten musical notation for the second system. The top staff is in treble clef and the bottom staff is in bass clef. The key signature has two sharps. The notation includes notes with stems, some beamed together, and accidentals. There are also some markings that look like '9' or 'b' below the notes.

Handwritten musical notation for the third system. The top staff is in treble clef and the bottom staff is in bass clef. The key signature has two sharps. The notation includes notes with stems, some beamed together, and accidentals. There are also some markings that look like '9' or 'b' below the notes.

Handwritten musical notation for the fourth system. The top staff is in treble clef and the bottom staff is in bass clef. The key signature has two sharps. The notation includes notes with stems, some beamed together, and accidentals. There are also some markings that look like '9' or 'b' below the notes.

Handwritten musical notation for the first system. It features a treble clef and a bass clef. The time signature is 3/8. The dynamic marking is *pp*. The first measure contains a box around a chord in the treble staff and a note in the bass staff. The second measure continues the melody in the treble staff and has a note in the bass staff. The system concludes with a double bar line.

Handwritten musical notation for the second system. It continues with two staves. The treble staff has a sequence of notes, and the bass staff has notes with stems. The system ends with a double bar line.

Handwritten musical notation for the third system. The treble staff shows a melodic line with notes and stems. The bass staff has notes with stems. The system ends with a double bar line.

Handwritten musical notation for the fourth system. It features two staves with notes and stems. The system concludes with a double bar line.

sehr zart (sehr langsam)

(f) ppp

Eine See ist Gottes

Gnade. Un-er = merslich

tief und weit -

mit gr. Ruhe (Ausklang)

Handwritten musical notation for the first system. The treble clef staff contains notes with accidentals: a quarter note D# (with '77' below it), a quarter note D# (with '77' below it), and a quarter note E# (with '!' below it). The bass clef staff contains notes with accidentals: a quarter note D# (with '77' below it), a quarter note D# (with '77' below it), and a quarter note E# (with '!' below it). A dynamic marking '#p.' is written below the bass staff. A large slur covers the notes in both staves. To the right, there are several horizontal lines representing a sustained chord or texture.

Handwritten musical notation for the second system. The treble clef staff contains notes with accidentals: a quarter note D# (with '!' below it), a quarter note D# (with '!' below it), and a quarter note E# (with '!' below it). The bass clef staff contains notes with accidentals: a quarter note D# (with '!' below it), a quarter note D# (with '!' below it), and a quarter note E# (with '!' below it). A dynamic marking '#p.' is written below the bass staff. To the right of the staves, the word 'lunga' is written, and the word 'Ende' is circled. A large, stylized flourish or signature is written below the 'lunga' and 'Ende' text.