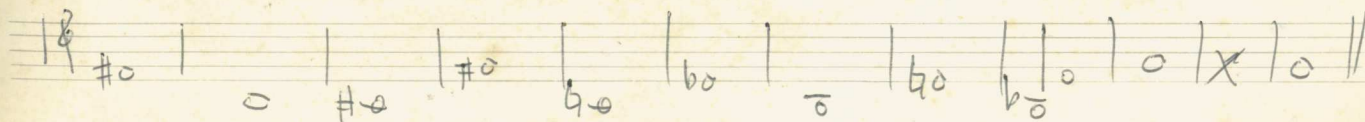


Fantasie für
Orgel 1978
Adolf Scherbaum
(Band 1)

(Ihr Herz schreit zu dem Herrn -
Du Mauer der Tochter Zion, laß,
einem Bäche gleich, Tränen rinnen
Tag und Nacht; gönne dir keine Rast,
deinem Augapfel keine Ruhe.



(p) ruhig (mit gr. Ruhe (fließende Achtel))

6/8 (p)

Measure 1: Treble clef: D4 (sharp), E4 (sharp), F4 (flat), G4 (sharp). Bass clef: G3 (sharp), A3 (sharp).
Measure 2: Treble clef: A4 (flat), B4 (flat), C5 (flat), D5 (flat). Bass clef: B2, A2, G2.

Measure 3: Treble clef: D4, E4 (sharp), F4 (sharp). Bass clef: G2, A2, B2.
Measure 4: Treble clef: G4 (sharp), A4 (sharp), B4 (sharp), C5 (sharp). Bass clef: D3 (sharp), E3 (sharp), F3 (sharp).

Measure 5: Treble clef: D4 (flat), E4 (flat), F4 (flat), G4 (flat). Bass clef: G2, A2, B2.
Measure 6: Treble clef: A4 (flat), B4 (flat), C5 (flat), D5 (flat). Bass clef: E2, F2, G2.

(2)

Handwritten musical notation for the first system. It consists of two staves. The top staff is in treble clef and contains a sequence of notes: a quarter note with a sharp sign, a quarter note with a sharp sign, a quarter note, and a quarter note. The bottom staff is in bass clef and contains a quarter note with a flat sign, followed by a quarter note with a sharp sign, a quarter note with a sharp sign, and a quarter note. A large slur covers the entire system.

Handwritten musical notation for the second system. It consists of two staves. The top staff is in treble clef and contains a quarter note with a sharp sign, a quarter note with a sharp sign, a quarter note with a sharp sign, and a quarter note. The bottom staff is in bass clef and contains a quarter note with a sharp sign, a quarter note with a sharp sign, a quarter note with a sharp sign, and a quarter note. A large slur covers the entire system.

Handwritten musical notation for the third system. It consists of two staves. The top staff is in treble clef and contains a quarter note with a sharp sign, a quarter note with a flat sign, a quarter note with a flat sign, and a quarter note with a sharp sign. The bottom staff is in bass clef and contains a quarter note with a sharp sign, a quarter note with a sharp sign, a quarter note with a sharp sign, and a quarter note with a sharp sign. A large slur covers the entire system.

Handwritten musical notation for the fourth system. It consists of two staves. The top staff is in treble clef and contains a quarter note with a sharp sign, a quarter note with a sharp sign, and a quarter note with a sharp sign. The bottom staff is in bass clef and contains a quarter note with a flat sign, a quarter note with a sharp sign, a quarter note with a sharp sign, and a quarter note with a sharp sign. A large slur covers the entire system.

Lento

Handwritten musical notation for the first system. It features a treble clef and a circled 'p' for piano. A large slur covers the entire staff. The notation includes notes with accidentals (b, d) and dynamic markings. The notes are: b d, b d, d, d, d, d.

Handwritten musical notation for the second system. It features a treble clef and a large slur over the entire staff. The notation includes notes with accidentals (b, d) and dynamic markings. The notes are: b d, b d, d, d, d, d.

Handwritten musical notation for the third system. It features a treble clef and a large slur over the entire staff. The notation includes notes with accidentals (b, d, #) and dynamic markings. The notes are: b d, b d, d, d, d, d.

Handwritten musical notation for the fourth system. It features a treble clef and a large slur over the entire staff. The notation includes notes with accidentals (b, d, #) and dynamic markings. The notes are: b d, b d, d, d, d, d.

rubato (appassionata) cresc (frei)

Handwritten musical notation for the first system. It consists of two staves. The top staff is in treble clef with a 4/4 time signature and a circled 'fff' dynamic marking. It features a melodic line with three triplet markings and a final fermata. The bottom staff is in bass clef and contains a bass line with a triplet and a final fermata. A large slur covers both staves.

quasi

Handwritten musical notation for the second system. It consists of two staves. The top staff is in treble clef and contains a melodic line with four triplet markings and a final fermata. The bottom staff is in bass clef and contains a bass line with a triplet and a final fermata. A large slur covers both staves.

quasi

Handwritten musical notation for the third system. It consists of two staves. The top staff is in treble clef and contains a melodic line with four triplet markings and a final fermata. The bottom staff is in bass clef and contains a bass line with a triplet and a final fermata. A large slur covers both staves.

Handwritten musical notation for the fourth system. It consists of two staves. The top staff is in treble clef and contains a melodic line with a triplet and a final fermata. The bottom staff is in bass clef and contains a bass line with a triplet and a final fermata. A large slur covers both staves.

sehr breit

Handwritten musical notation for the first system. It consists of two staves. The top staff is in treble clef and the bottom in bass clef. The time signature is 4/4. The notation includes various notes, accidentals (sharps, flats, naturals), and rests. A circled sharp symbol is present in the first measure of the bass staff. The system concludes with a double bar line.

Handwritten musical notation for the second system. It consists of two staves. The top staff is in treble clef and the bottom in bass clef. The time signature is circled 'C' (Common time). The notation includes various notes, accidentals, and rests. The system concludes with a double bar line and a fermata-like symbol above the staff.

Adagio (♩)

Handwritten musical notation for the third system. It consists of two staves. The top staff is in treble clef and the bottom in bass clef. The time signature is 3/4. A long slur covers the top staff across the first two measures. The notation includes notes, accidentals, and rests. A circled 'p' (piano) dynamic marking is present in the first measure of the bass staff. The system concludes with a double bar line.

(poco rit)

Handwritten musical notation for the fourth system. It consists of two staves. The top staff is in treble clef and the bottom in bass clef. The time signature is 3/4. A long slur covers the top staff across the first two measures. The notation includes notes, accidentals, and rests. The system concludes with a double bar line.

Lento (Maestoso)

Handwritten musical notation for the first system. It consists of two staves: a treble staff and a bass staff. The treble staff begins with a circled sharp sign (#) and contains several notes with accidentals (sharps and flats) and slurs. The bass staff also contains notes with accidentals and slurs. The notation is somewhat abstract, possibly representing a specific harmonic or melodic structure.

Handwritten musical notation for the second system. It features two staves. The treble staff has notes with accidentals and slurs. The bass staff has notes with accidentals and slurs. A circled rhythmic pattern is visible in the bass staff, consisting of a quarter note followed by two eighth notes. To the right of the staves, the marking "G.P." is written. The system concludes with a double bar line.

quasi. →

Handwritten musical notation for the third system. It consists of two staves. The treble staff has a triplet of notes with a bracket above them and a fermata above the first note. The bass staff has a triplet of notes with a bracket above them. A long horizontal line with a fermata above it spans across both staves, indicating a sustained or held note.

Handwritten musical notation for the fourth system. It consists of two staves. The treble staff has notes with accidentals and slurs. The bass staff has notes with accidentals and slurs. A long horizontal line with a fermata above it spans across both staves, indicating a sustained or held note. The system concludes with a double bar line.

sehr rasch (erregt)

Handwritten musical notation for the first system. It features a treble clef and a circled key signature of two sharps (F# and C#). The time signature is 3/4. The notation includes a triplet of eighth notes in the bass staff and a corresponding triplet of chords in the treble staff.

Handwritten musical notation for the second system. It features a treble clef and a key signature of one sharp (F#). The notation includes a triplet of eighth notes in the bass staff and a corresponding triplet of chords in the treble staff.

Handwritten musical notation for the third system. It features a treble clef and a key signature of one sharp (F#). The notation includes a triplet of eighth notes in the bass staff and a corresponding triplet of chords in the treble staff.

Handwritten musical notation for the fourth system. It features a treble clef and a key signature of one sharp (F#). The notation includes a triplet of eighth notes in the bass staff and a corresponding triplet of chords in the treble staff.

sehr legato (Töne liegen lassen) so möglich ist)

Handwritten musical notation for the first system. The treble clef part contains two measures: the first has notes G4, A4, B4 with sharps, and the second has notes C5, B4, A4. The bass clef part has notes G3, F3, E3 with sharps. Bar lines and repeat signs are present.

Handwritten musical notation for the second system. The treble clef part contains two measures: the first has notes G4, A4, B4, and the second has notes C5, B4, A4. The bass clef part has notes G3, F3, E3. Bar lines and repeat signs are present.

Handwritten musical notation for the third system. The treble clef part contains two measures: the first has notes G4, A4, B4 with sharps, and the second has notes C5, B4, A4. The bass clef part has notes G3, F3, E3 with sharps. Bar lines and repeat signs are present.

Handwritten musical notation for the fourth system. The treble clef part contains two measures: the first has notes G4, A4, B4 with flats, and the second has notes C5, B4, A4. The bass clef part has notes G3, F3, E3 with sharps. Bar lines and repeat signs are present.

Handwritten musical notation for the first system. The top staff is in treble clef with a key signature of two sharps (F# and C#). It contains four measures of a triplet of eighth notes. The bottom staff is in bass clef with a key signature of two sharps, containing four measures of a half note chord, with the first two measures having a slur over them.

Handwritten musical notation for the second system. The top staff is in treble clef with a key signature of one sharp (F#). It contains four measures of a triplet of eighth notes. The bottom staff is in bass clef with a key signature of one sharp, containing four measures of a half note chord, with the first two measures having a slur over them.

Handwritten musical notation for the third system. The top staff is in treble clef with a key signature of two flats (Bb and Eb). It contains four measures of a triplet of eighth notes. The bottom staff is in bass clef with a key signature of two flats, containing four measures of a half note chord, with the first two measures having a slur over them.

Handwritten musical notation for the fourth system. The top staff is in treble clef with a key signature of one flat (Bb). It contains four measures of a triplet of eighth notes. The bottom staff is in bass clef with a key signature of one flat, containing four measures of a half note chord, with the first two measures having a slur over them. The system ends with a double bar line and a fermata. The text "(poco rit)" is written above the final measure.

(frei (langsamer beginnen / accel).

Handwritten musical notation for the first system, featuring a treble clef with a circled 'C' and a 5/4 time signature. The right hand has a melodic line with slurs and a fermata, while the left hand has a bass line with a fermata. The system is divided into three measures.

Handwritten musical notation for the second system, featuring a treble clef and a 5/4 time signature. The right hand has a melodic line with slurs, and the left hand has a bass line with a fermata. The system is divided into three measures.

Handwritten musical notation for the third system, featuring a treble clef and a 5/4 time signature. The right hand has a melodic line with slurs, and the left hand has a bass line with a fermata. The system is divided into three measures. The word "(poco rit)" is written in the second measure.

lento

Handwritten musical notation for the fourth system, featuring a treble clef and a 5/4 time signature. The right hand has a melodic line with slurs and a fermata, and the left hand has a bass line with a fermata. The system is divided into four measures. The word "(poco rit)" is written in the second measure.

Marsch Funebre

Leuto / große Steigerung →

Handwritten musical notation for the first system. It features a treble clef with a circled 'G.P.' and 'pp' dynamic marking. The melody is written on a staff with a slur over two measures. The notes are: G4 (circled), A4, B4, C5, B4, A4, G4. The bass line consists of chords: G4, A4, B4, C5 and G4, A4, B4, C5.

Handwritten musical notation for the second system. It features a treble clef with an arrow pointing to the first measure. The melody is written on a staff with a slur over two measures. The notes are: G4, A4, B4, C5, B4, A4, G4. The bass line consists of chords: G4, A4, B4, C5 and G4, A4, B4, C5.

Handwritten musical notation for the third system. It features a treble clef with a circled 'G.P.' dynamic marking. The melody is written on a staff with a slur over three measures. The notes are: G4, A4, B4, C5, B4, A4, G4. The bass line consists of chords: G4, A4, B4, C5, G4, A4, B4, C5, G4, A4, B4, C5.

Handwritten musical notation for the fourth system. It features a treble clef with a circled 'p' dynamic marking. The melody is written on a staff with a slur over four measures. The notes are: G4, A4, B4, C5, B4, A4, G4. The bass line consists of chords: G4, A4, B4, C5, G4, A4, B4, C5, G4, A4, B4, C5.

Handwritten musical notation for the first system. The upper staff is in treble clef with a key signature of one sharp (F#) and a common time signature (C). It contains three measures of music, with a large slur over the first two measures and a fermata over the third. The lower staff is in bass clef and contains two measures of accompaniment, with a fermata over the second measure.

Handwritten musical notation for the second system. The upper staff is in treble clef with a key signature of one sharp (F#) and a common time signature (C). It contains three measures of music, with a large slur over the first two measures and a fermata over the third. The lower staff is in bass clef and contains two measures of accompaniment, with a fermata over the second measure. A circled '6' is written in the left margin.

Handwritten musical notation for the third system. The upper staff is in treble clef with a key signature of one sharp (F#) and a common time signature (C). It contains three measures of music, with a large slur over the first two measures and a fermata over the third. The lower staff is in bass clef and contains two measures of accompaniment, with a fermata over the second measure. The text "immer schwerer werden" is written in the right margin.

Handwritten musical notation for the fourth system. The upper staff is in treble clef with a key signature of one sharp (F#) and a common time signature (C). It contains two measures of music, with a large slur over the first measure and a fermata over the second. The lower staff is in bass clef and contains two measures of accompaniment, with a fermata over the second measure. The text "groß. rit" is written in the right margin.

gr. rit.

Handwritten musical score for organ, featuring a grand staff with treble, middle, and bass clefs. The music is written in blue ink and includes various notes, rests, and accidentals. A large slur covers the top two staves, and another large slur covers the bottom staff. The key signature is indicated by three sharps (F#, C#, G#).

lunga

Handwritten musical notation for organ, showing a grand staff with treble, middle, and bass clefs. The notation includes notes, rests, and accidentals. A large slur covers the bottom staff. The key signature is indicated by three sharps (F#, C#, G#).

Erster
November
1978

Org. Adolf Scherbaum

Fantasie für

Orgel 1978

Adolf Scherbaum

(Band 2)

(1) Maestoso

subito (frei) 6 8

Handwritten musical notation for the first system. The top staff is in treble clef with a 9/8 time signature. It contains two measures of music with triplets and slurs. The bottom staff is in bass clef with a 9/8 time signature and contains two measures of music with slurs.

Handwritten musical notation for the second system. The top staff is in treble clef with a 9/8 time signature. It contains two measures of music with slurs. The bottom staff is in bass clef with a 9/8 time signature and contains two measures of music with slurs.

Handwritten musical notation for the third system. The top staff is in treble clef with a 9/8 time signature. It contains two measures of music with slurs. The bottom staff is in bass clef with a 9/8 time signature and contains two measures of music with slurs.

poco rit

Handwritten musical notation for the fourth system. The top staff is in treble clef with a 9/8 time signature. It contains two measures of music with slurs. The bottom staff is in bass clef with a 9/8 time signature and contains two measures of music with slurs.

(1) auf 3 dringend — (aue. — bis Adorgia)

Handwritten musical notation for the first system. It consists of two staves. The top staff is in treble clef with a 3/4 time signature. It contains three measures of music, with notes including G#4, A4, and B4. The bottom staff is in bass clef and contains three measures of music, with notes including G3, A3, and B3. There are various accidentals and dynamics markings throughout.

Handwritten musical notation for the second system. It consists of two staves. The top staff is in treble clef and the bottom staff is in bass clef. The music continues with similar rhythmic patterns and note values as the first system, including triplets and various accidentals.

Handwritten musical notation for the third system. It consists of two staves. The top staff is in treble clef and the bottom staff is in bass clef. This system introduces more complex rhythmic patterns, including triplets and sixteenth notes, along with various accidentals.

cut ----

Handwritten musical notation for the fourth system. It consists of two staves. The top staff is in treble clef and the bottom staff is in bass clef. The music concludes with various notes and rests, including a final cadence.

Adagio (d) Ad libit

Handwritten musical notation for the first system. The treble clef part begins with a *pp* dynamic marking and a key signature of one sharp (F#). It features a series of eighth notes and a circled *pp* marking. The bass clef part consists of a series of notes with various accidentals (sharps and flats) and rests. The system is enclosed in a large blue bracket.

Handwritten musical notation for the second system. The treble clef part shows a key signature change to two sharps (F# and C#) and contains a series of eighth notes. The bass clef part has notes with various accidentals. The system is enclosed in a large blue bracket.

Handwritten musical notation for the third system. The treble clef part contains notes with various accidentals. The bass clef part has notes with various accidentals. The system is enclosed in a large blue bracket.

poco rit

Handwritten musical notation for the fourth system. The treble clef part has notes with various accidentals. The bass clef part has notes with various accidentals. The system is enclosed in a large blue bracket.

Presto

rit Adagio

Handwritten musical notation for the first system. The treble clef part begins with a whole note chord (F#4, A4) followed by a half note (C5) and a quarter note (E5). The bass clef part features a triplet of eighth notes (B3, G3, F#3) followed by a quarter note (E3) and a whole note (C4).

Presto

ADAGIO

Handwritten musical notation for the second system. The treble clef part starts with a whole note chord (F#4, A4) and a half note (C5). The bass clef part has a whole note (C4) and a half note (E3). A large slur spans across both staves, with a vertical line indicating a tempo change to Adagio.

Moderato

Handwritten musical notation for the third system, marked Moderato. The treble clef part has a circled sharp sign (#) and a 4/4 time signature. The bass clef part has a circled sharp sign (#) and a 4/4 time signature. The notation includes various notes and rests.

Handwritten musical notation for the fourth system. The treble clef part has a circled 'rit' marking. The bass clef part has a circled 'rit' marking. The notation includes various notes and rests.

Adagio (♩)

Handwritten musical notation for the first system of 'Adagio'. It features a treble clef, a key signature of one flat (B-flat), and a time signature of 8/8. The notation includes a series of notes on a staff, with some notes marked with a sharp sign (#) and a flat sign (b). A dynamic marking 'pp' (pianissimo) is present. The system is enclosed in a large blue bracket.

Handwritten musical notation for the second system of 'Adagio'. It continues the piece with a treble clef and a key signature of one flat. The notation includes notes and rests, with some notes marked with a sharp sign (#) and a flat sign (b). The system is enclosed in a large blue bracket.

Maestoso (quadrato)

Handwritten musical notation for the first system of 'Maestoso'. It features a treble clef, a key signature of two sharps (F# and C#), and a time signature of 4/4. The notation includes notes and rests, with some notes marked with a sharp sign (#) and a flat sign (b). A circled key signature symbol (F# and C#) is present. The system is enclosed in a large blue bracket.

Handwritten musical notation for the second system of 'Maestoso'. It continues the piece with a treble clef and a key signature of two sharps. The notation includes notes and rests, with some notes marked with a sharp sign (#) and a flat sign (b). A circled key signature symbol (F# and C#) is present. The system is enclosed in a large blue bracket.

accel. — bis Presto

Handwritten musical notation for the first system. It features a treble clef, a 4/4 time signature, and a circled 'p' dynamic marking. The music consists of a series of eighth notes with accidentals, grouped by a slur and a '3' above it. A fermata is placed over the first measure. A large slur spans across the first and second measures. A bar line is present after the second measure.

Handwritten musical notation for the second system. It features a treble clef and a 4/4 time signature. The music consists of a series of eighth notes with accidentals, grouped by a slur. A large slur spans across the first and second measures. A bar line is present after the second measure.

Handwritten musical notation for the third system. It features a treble clef and a 4/4 time signature. The music consists of a series of eighth notes with accidentals, grouped by a slur and a '3' above it. A circled 'f' dynamic marking with an arrow points to the first measure. A large slur spans across the first and second measures. A bar line is present after the second measure.

Handwritten musical notation for the fourth system. It features a treble clef and a 4/4 time signature. The music consists of a series of eighth notes with accidentals, grouped by a slur. A circled 'f' dynamic marking with an arrow points to the first measure. A large slur spans across the first and second measures. A bar line is present after the second measure.

sehr rasch (cresc.)

Handwritten musical notation for the first system. The treble clef part begins with a 3/4 time signature and a circled '77'. It contains two measures of chords: the first measure has a triad of G#4, A#4, B4, and the second measure has a triad of A#4, B4, C5. The bass clef part has a triplet of notes: G#3, A3, B3, followed by two rests.

Handwritten musical notation for the second system. The treble clef part has two measures of chords: the first measure has a triad of G4, A4, B4, and the second measure has a triad of A#4, B4, C5. The bass clef part has a triplet of notes: G#3, A3, B3, followed by two rests.

Handwritten musical notation for the third system. The treble clef part has two measures of chords: the first measure has a triad of G4, A4, B4, and the second measure has a triad of A#4, B4, C5. The bass clef part has a triplet of notes: G#3, A3, B3, followed by two rests.

Handwritten musical notation for the fourth system. The treble clef part has two measures of chords: the first measure has a triad of G4, A4, B4, and the second measure has a triad of A#4, B4, C5. The bass clef part has a triplet of notes: G#3, A3, B3, followed by two rests.

Handwritten musical notation for the first system. The top staff is in treble clef and contains three measures of chords with accents above them. The bottom staff is in bass clef and contains two notes with a slur underneath. The system is divided into four measures by bar lines.

Handwritten musical notation for the second system. The top staff is in treble clef and contains three measures of chords with accents above them. The bottom staff is in bass clef and contains three notes with a slur underneath. The system is divided into four measures by bar lines.

Handwritten musical notation for the third system. The top staff is in treble clef and contains two measures of chords with a triplet marking above the first measure. The bottom staff is in bass clef and contains two measures of chords. The system is divided into four measures by bar lines.

Handwritten musical notation for the fourth system. The top staff is in treble clef and contains two measures of chords with a slur underneath. The bottom staff is in bass clef and contains two measures of chords. The system is divided into four measures by bar lines.

(Zet gut)

Adagio

Handwritten musical score for Adagio. The right staff (treble clef) contains several chords and melodic lines, including a circled '9' and a circled '9#'. The left staff (bass clef) contains a long note with a 'd' and a 'b' below it. There are various musical notations like slurs, ties, and dynamic markings.

lento (Funerale)

Handwritten musical score for lento (Funerale). The right staff (treble clef) contains a circled '9' and a circled '9#'. The left staff (bass clef) contains a circled '3' and a circled '4'. There are various musical notations like slurs, ties, and dynamic markings.

Handwritten musical score for a section. The right staff (treble clef) contains a circled 'pp' and a circled '9'. The left staff (bass clef) contains a circled '3' and a circled '4'. There are various musical notations like slurs, ties, and dynamic markings.

Handwritten musical score for a section. The right staff (treble clef) contains a circled 'pp' and a circled '9'. The left staff (bass clef) contains a circled '3' and a circled '4'. There are various musical notations like slurs, ties, and dynamic markings.

Handwritten musical notation for the first system. The treble clef has a circled 'p' dynamic marking. The treble staff contains a melodic line with a slur over four measures, and the bass staff contains a rhythmic accompaniment. The key signature has one sharp (F#).

Handwritten musical notation for the second system. The treble clef has a circled 'mf' dynamic marking. The treble staff contains a melodic line with a slur over four measures, and the bass staff contains a rhythmic accompaniment. The key signature has one sharp (F#).

Handwritten musical notation for the third system. The treble clef has a circled 'f' dynamic marking. The treble staff contains a melodic line with a slur over four measures, and the bass staff contains a rhythmic accompaniment. The key signature has one sharp (F#). The text "immer langsamer werden" is written below the bass staff.

Handwritten musical notation for the fourth system. The treble clef has a circled 'ff' dynamic marking. The treble staff contains a melodic line with a slur over four measures, and the bass staff contains a rhythmic accompaniment. The key signature has one sharp (F#).

Handwritten musical notation for the first system, featuring a treble clef, a key signature of one sharp (F#), and a common time signature. The notation includes a series of notes with slurs and ties, and a large, sweeping line above the staff. Below the staff, there are rhythmic markings and chord symbols.

immer noch breiter werden -

Handwritten musical notation for the second system, featuring a treble clef, a key signature of one sharp (F#), and a common time signature. The notation includes a series of notes with slurs and ties, and a large, sweeping line above the staff. Below the staff, there are rhythmic markings and chord symbols.

lunga

1978 Ing
1. November

Adolf
Scherbaum

Fantasie für

Orgel

1978

Adolf Scherbaum

Band (3)

Schlussstück.

sehr breit

(♩)

Lento

Manschi
funebre

Handwritten musical notation for the first system. It consists of two staves. The upper staff has a circled 'pp' dynamic marking. The notes are: f' , f' , g , $\#g$, $\#g$. The lower staff contains a sequence of notes: f , $\#f$, g , $\#g$, f , $\#f$, g , $\#g$, f , $\#f$, g , $\#g$. A long slur covers the entire system.

Handwritten musical notation for the second system. The upper staff contains notes: $\#f$, g , $\#g$, f , $\#f$, g , $\#g$, f , $\#f$, g , $\#g$, f , $\#f$, g , $\#g$. The lower staff contains notes: f , $\#f$, g , $\#g$, f , $\#f$, g , $\#g$, f , $\#f$, g , $\#g$. The word "rit..." is written in the lower right. A long slur covers the entire system.

Lento (♩)

Handwritten musical notation for the third system, marked "Lento (♩)". It features a treble clef with a 3/4 time signature and a key signature of one sharp (F#). The notes are: d , d , d , d . The lower staff contains chords: $\#f$, g , $\#g$, f , $\#f$, g , $\#g$, f , $\#f$, g , $\#g$. A long slur covers the entire system.

accel,

sehr erregt (bewegt)

Handwritten musical notation for the first system. The top staff is in treble clef with a key signature of one sharp (F#) and a 3-measure triplet of eighth notes. The bottom staff is in bass clef with a key signature of two sharps (F# and C#) and a 9-measure triplet of eighth notes. A large slur covers the entire system.

sehr legato

Handwritten musical notation for the second system. The top staff is in treble clef with a key signature of one flat (Bb) and a 6-measure triplet of eighth notes. The bottom staff is in bass clef with a key signature of two sharps (F# and C#) and a 6-measure triplet of eighth notes. A slur covers the first two measures of each staff.

Handwritten musical notation for the third system. The top staff is in treble clef with a key signature of one flat (Bb) and a 6-measure triplet of eighth notes. The bottom staff is in bass clef with a key signature of two sharps (F# and C#) and a 6-measure triplet of eighth notes. A slur covers the first two measures of each staff.

Handwritten musical notation for the fourth system. The top staff is in treble clef with a key signature of one sharp (F#) and a 6-measure triplet of eighth notes. The bottom staff is in bass clef with a key signature of one sharp (F#) and a 6-measure triplet of eighth notes. A slur covers the first two measures of each staff.

allmählich immer langsamer

Maestoso

(1) Adagio (misterioso)

sehr breit

lento

Handwritten musical notation for the first system. It features a treble clef and a circled 'pp' dynamic marking. The notation includes notes with slurs and accents, and some notes are marked with '3' and '4'.

Handwritten musical notation for the second system, continuing the piece with similar notation and dynamics.

Handwritten musical notation for the third system, showing further development of the musical ideas.

Handwritten musical notation for the fourth system, concluding the piece with a final cadence.

(♩) oder dissonant / unklar

Handwritten musical notation for the first system. The treble clef staff contains a whole note chord with a flat sign, followed by a half note chord with a flat sign, and a whole note chord with a flat sign. The bass clef staff contains a half note chord with a flat sign, a quarter note chord with a sharp sign, a quarter note chord with a flat sign, a quarter note chord with a flat sign, and a quarter note chord with a sharp sign.

Handwritten musical notation for the second system. The treble clef staff contains a half note chord with a sharp sign, a half note chord with a sharp sign, a half note chord with a flat sign, and a half note chord with a flat sign. The bass clef staff contains a half note chord with a sharp sign, a half note chord with a sharp sign, a half note chord with a sharp sign, and a half note chord with a sharp sign.

Handwritten musical notation for the third system. The treble clef staff contains a half note chord with a flat sign, a half note chord with a flat sign, a half note chord with a sharp sign, a half note chord with a sharp sign, a half note chord with a sharp sign, and a circled half note chord with a flat sign. The bass clef staff contains a half note chord with a flat sign, a half note chord with a flat sign, a half note chord with a flat sign, a half note chord with a flat sign, a half note chord with a flat sign, and a half note chord with a sharp sign.

Handwritten musical notation for the fourth system. The treble clef staff contains a half note chord with a sharp sign, a half note chord with a sharp sign, a half note chord with a sharp sign, and a half note chord with a sharp sign. The bass clef staff contains a half note chord with a sharp sign, a half note chord with a sharp sign, a half note chord with a sharp sign, and a half note chord with a sharp sign.

Handwritten musical notation for the first system. The top staff is in treble clef and the bottom staff is in bass clef. The key signature has two sharps (F# and C#). The notation includes notes, accidentals, and a fermata over the final measure.

Handwritten musical notation for the second system. The top staff is in treble clef and the bottom staff is in bass clef. The key signature has two sharps. The notation includes notes, accidentals, and a fermata over the final measure.

Handwritten musical notation for the third system. The top staff is in treble clef and the bottom staff is in bass clef. The key signature has two sharps. The notation includes notes, accidentals, and a fermata over the final measure.

rit

Handwritten musical notation for the fourth system. The top staff is in treble clef and the bottom staff is in bass clef. The key signature has two sharps. The notation includes notes, accidentals, and a fermata over the final measure.

Handwritten musical notation for the first system. It consists of two staves. The top staff is in treble clef with a key signature of one sharp (F#) and a common time signature (C). It contains two measures of music, each with a slur over a pair of notes and a fermata-like symbol. The notes are G# and A. The bottom staff is in bass clef and contains two measures of music, each with a slur over a pair of notes and a fermata-like symbol. The notes are G and A. The first measure of the bottom staff has a flat sign (b) before the G. The dynamic marking 'pp' is written to the left of the first measure.

Handwritten musical notation for the second system. It consists of two staves. The top staff is in treble clef with a key signature of one sharp (F#) and a common time signature (C). It contains two measures of music, each with a slur over a pair of notes and a fermata-like symbol. The notes are G# and A. The bottom staff is in bass clef and contains two measures of music, each with a slur over a pair of notes and a fermata-like symbol. The notes are G and A. The first measure of the bottom staff has a flat sign (b) before the G. The dynamic marking 'pp' is written to the left of the first measure.

Handwritten musical notation for the third system. It consists of two staves. The top staff is in treble clef with a key signature of one sharp (F#) and a common time signature (C). It contains two measures of music, each with a slur over a pair of notes and a fermata-like symbol. The notes are G# and A. The bottom staff is in bass clef and contains two measures of music, each with a slur over a pair of notes and a fermata-like symbol. The notes are G and A. The first measure of the bottom staff has a flat sign (b) before the G.

Handwritten musical notation for the fourth system. It consists of two staves. The top staff is in treble clef with a key signature of one sharp (F#) and a common time signature (C). It contains two measures of music, each with a slur over a pair of notes and a fermata-like symbol. The notes are G# and A. The bottom staff is in bass clef and contains two measures of music, each with a slur over a pair of notes and a fermata-like symbol. The notes are G and A. The first measure of the bottom staff has a flat sign (b) before the G. The system ends with a double bar line.

sehr zart (sehr langsam)

(f) ppp

Eine See ist Gottes

Gnade Un-er = meßlich

tief und weit -

mit ev. Ruhe (Ausklang)

Handwritten musical notation for two staves. The top staff is in treble clef and the bottom in bass clef. Both staves have a common time signature. The notation includes notes with accidentals (sharps) and dynamic markings like 'p' and 'pp'. There are also some handwritten annotations like '77' and '9'.

Handwritten musical notation for two staves. The top staff is in treble clef and the bottom in bass clef. Both staves have a common time signature. The notation includes notes with accidentals (sharps) and dynamic markings like 'p'. There are also some handwritten annotations like '9' and '9'.

lunga (Ende)

