

L.v. BEETHOVEN



W.A. MOZART



NOTENHEFT

F. SCHUBERT



J. HAYDN



J. STRAUSS



Importazione e distribuzione in Italia per conto della A.M. S.p.A. - Via S. Pietro, 10 - 00187 Roma - Tel. 06/4781111

MADE IN AUSTRIA



~~Vol. Nr. 257~~

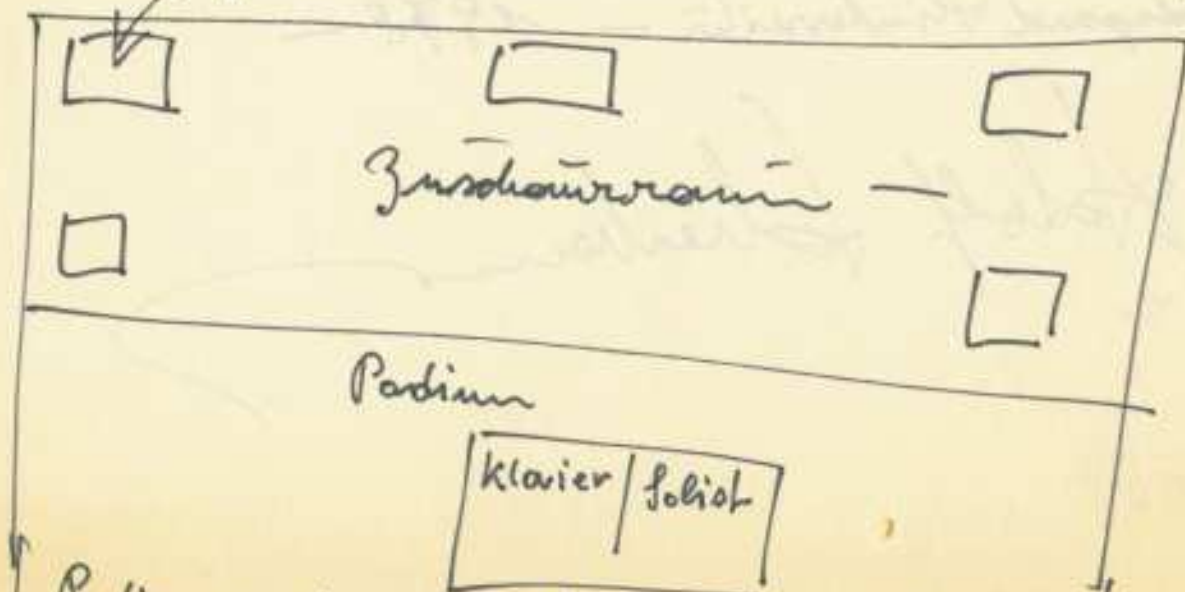
Diese 4 Teile für Flöte und
Klavier habe ich geschrieben
für einen Solisten. -

Der Soloflötist spielt auch den
Klavierspart. - Ich habe diese
Stücke für mich selbst geschrieben. -

Ich möchte dazu bei Aufführungen
Zusatzmikrophone - mit
Verstärkeranlagen und viel
Hall.

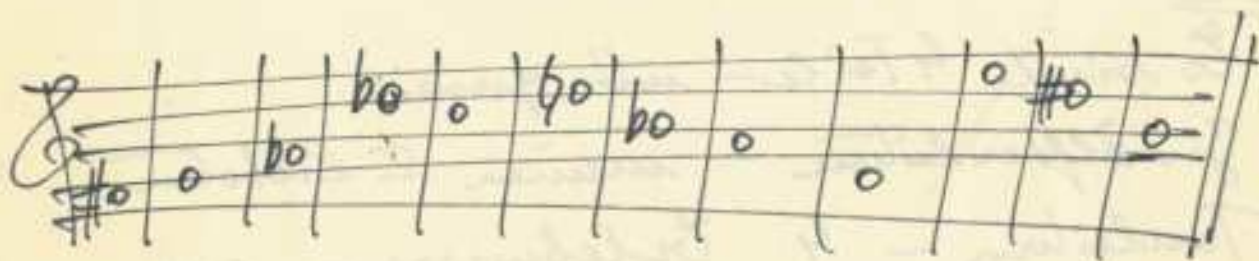
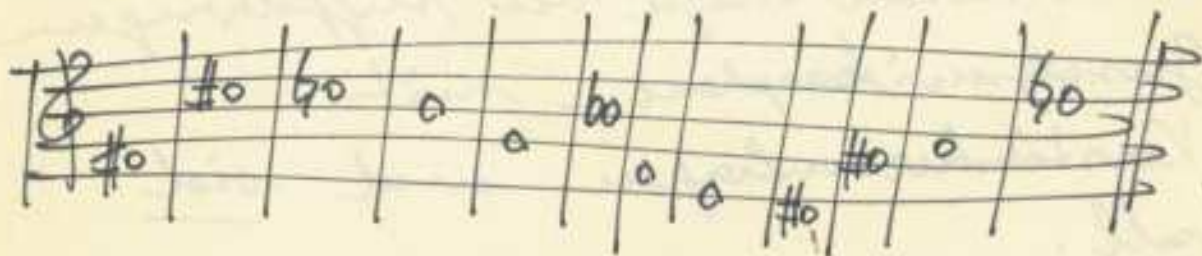
Es sind 4 Teile - mit zwei
Zwölftleitern - meinen 2 liebsten
Tonleitern - 4 Erlebnisse - aus
meinem Leben. -

große Lautsprecher mit Hall



Podium auch im Rückell - bis auf den Solisten -
auf dem ein blaues Licht kopf. pen. abet 11. -

Ein Versuch — obwohl ich so viele
Kompositionen habe, mit großem
Orchester —
das auch ein Musiker — ein Schist —
oft genügt — um auch einen großen
Konzertsaal zu füllen. —
Die zwei Lieblingsreihen (Zwölftone) sind



diese Stücke widme ich meiner langjährigen
Lebensgefährtin —
Hildegard Hinterreiter — 1978 —

Adolf Schenker

Diese Teile - (15 Teile) - wurden
geschrieben - 1978 (es sind Episoden)
3 Zwölftonreihen habe ich dazu
verwendet. -

Diese Teile sind geschrieben für einen
Solisten - (Flöte - der auch Klavier
dazu spielt - und großem Org. -

Verstärkeranlage - mit Lautsprecher -
im Saal verteilt - und sehr viel Hall. -

Die Stücke müssen klingen - als
können sie aus riesigen Räumen -
aus Kirchen - bei gewissen Zeichen -

($\{\{\}$ - $\{\{\}$) müssen Clustern - die auf

Tauband aufgenommen würden -
eingebildet werden. - (Taubandaufnahme v. einem
Orchester)

Der Solist steht auf einer Bühne -
Saal vollständig dunkel - nur ein
Lichtkegel - (der immer etwas) seine
Farben ändert - ist auf ihn gerichtet. -
(Hauptfarbe Blau) -

Ich habe für diese Teile 2 meiner
Lieblingszwölftonreihen verwendet - und
eine dritte Reihe - später dazu kommen. -
Man kann auch zwischen den Teilen -
Texte von Bert Brecht sprechen lassen. -
Die ganze Komposition kann all. Zitat
erweitert werden - das überlasse ich dem
Leiter - der alles leitet. -

Die 15 Teile können auch teilweise mit
einem großen Orchester unterstützt werden. -

Es ist alles frei. - Man soll wie das
Gefühl haben - irgend einen Takt - einem
Zeitablauf zu spüren. -

Diese Komposition kann bis zu 2 Stunden
ausgedehnt werden. -

May 1978 Adolf Schöbaum

1. Reihe, Fis, Cis, C, H, G, B, F, E, ~~H~~, Dis, Gis, F, D,
- 2.) " , Fis, G, As, Des, C, D, B, A, F, E, Dis, H, -
- 3.) " (F, G, C, Des, As, Be, H, D, Es, F, E, Fis,)

4 Teile für einen Solisten.

1978 Adolf Scherbaum

(+ Klavier + großes Horn) - ①

Teil ①

Flöte | Horn frei postallern

Flute / Horn part:

Flute/Horn part, measures 1-4. Dynamics: pp. Accents: ^.

Piano part:

Piano part, measures 1-4. Dynamics: pp. Markings: R.H., L.H., Pedal.

Flute/Horn part, measures 5-8. Dynamics: mp, pp, f > pp. Accents: ^.

Piano part, measures 5-8. Dynamics: pp.

Flute/Horn part, measures 9-12. Dynamics: mp, f. Accents: ^.

Piano part, measures 9-12. Dynamics: p. Markings: Pedal.

Large Horn part:

Large Horn part, measures 9-12. Dynamics: p. Markings: Pedal.

frei) (flüchtig) $\frac{1}{10}$ $\frac{1}{10}$

8 rubato

Lunpa

pp

ruhig (frei)

ffp

Pedal

pp

frei) legg.

pp

ff

(rit)

Lunpa

pp

pppp

dämpf.

Teil
②

ganz frei

über fassen streicher und geißeln.....

2^{te} Hand *pp* = (frei -) *fff* >

Pedal

pr. gang
f
xx
o

schling (frei)

pp = (VIBRATO) *f*

Rasch über fassen
pp
|
streichen

fff (dicht-Cluster) *ppp*

Lang

dein bei ↓

sehr ruhig (♩)

Handwritten musical score for the first system. It features a treble clef and a grand staff. The music is marked "sehr ruhig" and includes a tempo marking of a quarter note. The piano part is marked "Pedal" and "pp". The score consists of three measures with various accidentals and dynamics.

Handwritten musical score for the second system. It continues the piece with similar notation and dynamics. The piano part is marked "Pedal" and "pp". The score consists of three measures with various accidentals and dynamics.

frei (♩)

Handwritten musical score for the third system. It includes a tempo marking of a quarter note and is marked "frei". The piano part is marked "Pedal" and "pp". The score consists of two measures, with the first measure containing a triplet and a fermata. The second measure has a fermata and a dynamic marking of "f".

rubato

Handwritten musical score for the first system. It features a treble clef staff with a circled '16' above it, containing a triplet of eighth notes marked 'ff' and a series of chords. The bass clef staff has a circled 'ff' and the instruction 'Pedal bleibt'. The system concludes with a double bar line.

Handwritten musical score for the second system. The treble clef staff has a circled '16' and contains wavy lines and chords. The bass clef staff shows rhythmic markings and notes. The system ends with a double bar line.

Handwritten musical score for the third system. The treble clef staff contains a circled '16', a circled 'ff', and a circled 'ppp'. It features a circled 'rit + dim' with arrows indicating dynamics, and a circled 'ff' with an accent. The bass clef staff has a circled 'ff' and a circled 'pp'. The system ends with a double bar line.

Teil ③

sehr rasch (over)

rubato (over/frei) -

breit

flamed.....

rubato

Flatterzunge

Cluster für Orchester

pp

Librato

breit

(ohne Flatterz.)

breit

immer schwächer (Cluster)

Pedal bleibt

langsam — ganz langsam / frei

zart

pp

pp

ppp

G. P.

frei

Adolf Schöbaum: 15 Teile (Episoden) für einen Solisten, BWV 1163 (1978)
 © 2010 Inge Adami-Schöbaum. Alle Rechte vorbehalten.

12

cello

Handwritten musical score for the first system. The top staff is for the cello, and the bottom two staves are for the piano. The piano part includes a circled '4' and the word 'Pedal' written below the staff. The music consists of three measures with various notes, rests, and dynamic markings like 'pp' and 'f'.

Handwritten musical score for the second system. It continues the cello and piano parts from the first system. The piano part features a circled 'p' at the end of the system. The notation includes notes, rests, and dynamic markings such as 'f' and 'p'.

Handwritten musical score for the third system. It concludes the cello and piano parts. The piano part includes a circled 'p' and the word 'Pedal' written below the staff. The notation includes notes, rests, and dynamic markings like 'p'.

Handwritten musical score for the first system. It features three staves: a treble clef staff with a melodic line starting with a dynamic marking 'p' and a slur, and two piano staves. The piano part includes a bass line with notes and a cluster of notes. A dynamic marking 'p' is placed below the piano part. The text "Empire Pedal" is written below the piano part.

Handwritten musical score for the second system. It features three staves. The treble clef staff has notes with dynamics 'pp' and 'p'. The piano part has a cluster of notes with a dynamic marking 'pp' and the text "Cluster für Orchest" written above it. There are also some handwritten annotations like 'b' and 'm' above notes.

Handwritten musical score for the third system. It features three staves. The treble clef staff has notes with dynamics 'pp' and 'ppp', and the text "(frei) — frei (mit + klein) —" above it. The piano part has a large cluster of notes with a dynamic marking 'ppp' and the text "Cluster" written below it. There are also handwritten annotations like "Lungu" and "nicht Teilli".

Teil 4

tento (♩)

6
8
ppp
Pedal

gang frei (Alfiflöte - richtig nicht - viel Vibrato -

pp
p
dichtesten Cluster
Cluster
Pedal bleibt

pp
pr. gang

(♩) *lento*

8

pp

Pedal

Cluster tief -

Altflöte (paz frei) mit viel Hall -

(d)

p

f

p

frei

p

pp

breit (appassionata)

lento

pp

pp

Lunga

sehr ruhig - frei

4 pp
Pedal
Pedal 8
Pedal 8

mit dem
leicht und ganz frei
sehr rasch
über fasten streichen
Pedal

Clustern für
Orchester
PP - ff
Pedal

Normalflöte -
frei-rubato

ausklingen lassen
bis pp

G.P.

Flöte) sehr frei - ruhig - langsam (viel Vibrato) und Hall

(1)

pp

gr. Clustern
(sehr dicht)

pp

p

p

p

Largo - geübt mit + dein - - -

p

pp

pp

Largo

Lunga

Pedal

Teil ②

(5 Teile — (Teil 2)

für einen Solisten

1978

Teil ①

lung frei

Normal Flöte

R.H.

L.H.

Pedal

pp

Pedal

Preziosissimo (legg.)

pp

Pedal

frei

pp

Lungo

clusten

Pedal

pp

ad. lib.

pp

Pedal, bleibt

ffp *Lenzo*

pp *clusten für*
orchester

pp

Pedal

ff. gut -

Lungo

pp

ff. lang

Teil ②

sehr würdig (breit)

(♩)

ff

Pedal

Cluster für
Orchester

Pedal

G.P.

über Paiten

sehr langsam (schwebend)

Handwritten musical score for the first system. It features a treble clef and a grand staff. The upper staff contains a melodic line with notes and slurs. The lower staff contains a bass line with notes and slurs. The dynamic marking *pp* is present. The word "Pedal" is written below the lower staff.

Handwritten musical score for the second system. It continues the melodic and bass lines from the first system. The notation includes various note values, slurs, and dynamic markings.

Handwritten musical score for the third system. It includes performance instructions such as "Lento" and "Lunga". The notation features a treble clef, a grand staff, and various markings including *ppp* and *ppppp*. The word "Pedal" is written below the lower staff.

Teil ③

Andante (oder frei) breit

Handwritten musical score for the first system. The piano part is in the left hand, starting with a forte (fff) dynamic and playing a series of chords. The flute part is in the right hand, starting with a rest and then playing a melodic line with a rubato marking and a 'breit' instruction. The score includes various musical notations such as slurs, accents, and dynamic markings.

Handwritten musical score for the second system. The piano part continues with chords, and the flute part continues with a melodic line. The score includes various musical notations such as slurs, accents, and dynamic markings.

Handwritten musical score for the third system, labeled 'Flöte (Solo)'. The flute part starts with a piano (pp) dynamic and plays a melodic line with a 'Lunga' marking. The score includes various musical notations such as slurs, accents, and dynamic markings.

sehr ruhig - (Vibrato)

Handwritten musical score for the first system. The top staff is for the flute, starting with a whole rest followed by a melodic line in G major with dynamics *pp* and *pp*. The piano accompaniment consists of two staves with chords and a *Pedal* marking. A circled *ff* is written above the piano part.

Handwritten musical score for the second system. The flute part continues with a melodic line, including a circled *ff* and a circled *pp*. The piano accompaniment continues with chords and a *Pedal* marking.

Handwritten musical score for the third system. The flute part is labeled *Flöte (frei) legg. (♩)* and features a melodic line with dynamics *f>*, *p*, *pp*, and *pp*. The piano accompaniment includes a *ganj* marking and a circled *pp*. A circled *ff* is also present.

Teil ④

Prestissimo

Handwritten musical score for the first system. It features a grand staff with a treble clef on the top staff and a bass clef on the bottom staff. The time signature is 2/4. The key signature has two sharps (F# and C#). The music begins with a piano (ppp) dynamic and includes accents (^) over the first two notes of the first measure. The first measure contains a half note chord (F#4, C#5) and a half note (F#4). The second measure contains a half note chord (G#4, C#5) and a half note (G#4). The third and fourth measures contain half note chords (A4, C#5) and (B4, C#5) respectively. The fifth and sixth measures contain half note chords (C5, C#5) and (D5, C#5) respectively. The system ends with a double bar line.

Handwritten musical score for the second system. It features a grand staff with a treble clef on the top staff and a bass clef on the bottom staff. The time signature is 2/4. The key signature has two sharps (F# and C#). The music begins with a piano (pp) dynamic and includes accents (^) over the first two notes of the first measure. The first measure contains a half note chord (D5, C#5) and a half note (D5). The second measure contains a half note chord (E5, C#5) and a half note (E5). The third and fourth measures contain half note chords (F#5, C#5) and (G#5, C#5) respectively. The fifth and sixth measures contain half note chords (A5, C#5) and (B5, C#5) respectively. The system ends with a double bar line.

Handwritten musical score for the third system. It features a grand staff with a treble clef on the top staff and a bass clef on the bottom staff. The time signature is 2/4. The key signature has two sharps (F# and C#). The music begins with a piano (p) dynamic and includes accents (^) over the first two notes of the first measure. The first measure contains a half note chord (C#5, C#5) and a half note (C#5). The second measure contains a half note chord (D#5, C#5) and a half note (D#5). The third and fourth measures contain half note chords (E#5, C#5) and (F#5, C#5) respectively. The fifth and sixth measures contain half note chords (G#5, C#5) and (A#5, C#5) respectively. The system ends with a double bar line.

Clustern für Orchester

Pedal

frei except-

Cluster Tonband

flüchtig... except

(flüchtig)

mf (Lento)

Pedal

verklungen lassen *ppp*

G. P.

Prestinissimo

1 2 3 4 5 6 7

ppp

Pedal

legg. (frei)

pp

ff

pp

7

deckt Teil. Lunga

pr. gang *mf* *ff*

Teil 5

ganz frei (schlückh.-) Altflöte - gründlich motivisch
viel Hall - -

pp = G [^] F [^] E [^] D C B A G

Pedal

p = G [^] F [^] E [^] D C B A G

Pedal

Handwritten musical score for the first system. The upper staff is in treble clef with a key signature of one sharp (F#). It begins with a circled plus sign (+) and contains notes with various dynamics including *f* and *pp*. The lower staff is in bass clef and contains a few notes.

Handwritten musical score for the second system. The upper staff is in treble clef with a key signature of one sharp (F#). It is marked "ganz frei" and contains notes with dynamics *pp* and *pp*. The lower staff is in bass clef and features a large rectangular area with a cross-hatch pattern, labeled "Pedal" and "pp".

Handwritten musical score for the third system. The upper staff is in treble clef with a key signature of one sharp (F#). It is marked "frei" and contains notes with dynamics *pp* and *ppp*. The lower staff is in bass clef and contains notes with a "Vibrato" marking.

religioso | Altflöte -

6/4 pp =
Pedal
f

frei -

pp
f

f =
pp
Pedal
f

Lento

cluster (Tonband)

mp <=> pp

G.P.

mit größtem Hauch)

Part-Flöte - Solo (Vibrato) -

pp < f > ppv

RUHIG Lento (Vibrato)

p > mit +ahn

legg. ppp > ppp Lunga

3. Teil —

Solo für einen Solisten —
der auch das Klavierpart
spielt.

1978.

Adolf Scherbaum

(6 Teile) — Variationen!

Scha

Teil ①

frei (ruhig) viel V. brato

①

grotesk) frei (begeist)

poco rit -

Presto (protesk)

Flöte

$\frac{3}{4}$

D.C. al Fine

Teil ②

frei - willig) Flöte -

6
4 pp <

frei - willig

frei - willig - willig

Pedal

sehr melodisch

Pedal

breit

fff

mit größtem Ausdruck

sehr ruhig —

ppc

rit. *ritando*

schwebend

Pedal

pp

ppp

lunga

sehr energisch

Teil ③

belebende (frei-subito) ③

ff (Flutterzunge -)

(frei)

ohne Flutterzunge

(frei-energie)

st. Schlags

erregt bewegt

Handwritten musical score for the first system. The top staff is in treble clef and the bottom staff is in bass clef. The music consists of several measures with notes, accidentals (sharps, flats, naturals), and slurs. A dynamic marking 'hart!' is present in the middle of the system.

Handwritten musical score for the second system. The top staff is in treble clef and the bottom staff is in bass clef. It features a large slur over the first part of the system, with the word '(frei)' written above it. A dynamic marking 'pp' is used, followed by a section marked 'lass.' with a triplet of notes.

Handwritten musical score for the third system. The top staff is in treble clef and the bottom staff is in bass clef. It includes the instruction 'dicht Triller' above the first measure. The system is marked 'rubbato (frei)' and 'flauwend'. Dynamic markings 'pp' and 'ff' are used. A 'Pedal' section is indicated with a wavy line. The word 'Lunga' appears at the end of the system.

pr. Gang

Teil ④

(bei D.C.)

con sord.) Cluster ^④ ppp - sempre - bis Schluss - von ev. Orchester)

Preziosissimo] (mit sehr viel Hall - schwebend)
Feste Solo -

ppp <
 Ländliche
 Steigerung →

2te ab hier Flatterzunge - bis f)

Handwritten musical notation on a grand staff. The key signature has one sharp (F#). The first system contains four measures of chords with accents (^) and slurs. The second system contains two measures of chords with accents (^) and slurs. The word "wieder normal" is written below the second system.

Handwritten musical notation on a grand staff. The first system contains two measures of chords with accents (^) and slurs. The second system starts with a 4/4 time signature and contains a series of notes with a slur and a fermata. The word "sempre din" is written above the first system, and "mit viel Kraft - schreiben" is written below the second system. Dynamic markings include *pp*, *ff*, and *pv*.

Handwritten musical notation on a grand staff. The first system contains a series of notes with a slur and a fermata. The word "flimmernd" is written below the first system. Dynamic markings include *ff* and *dim*.

Handwritten musical notation on a grand staff. The first system contains a series of notes with a slur and a fermata. Dynamic markings include *f* and *p*.

Handwritten musical notation on a grand staff. The first system contains four measures of chords with accents (^) and slurs. The word "D.C." is circled at the end of the system. Dynamic markings include *pp*.

Handwritten musical notation on a grand staff. The first system contains a series of notes with a slur and a fermata. The second system contains seven measures of notes with slurs. Dynamic markings include *ppp*.

Teil ⑤

sehr frei (langsam)

5

Handwritten musical score for the first system of 'Teil 5'. It features a treble clef staff with a key signature of one sharp (F#) and a common time signature. The melody is marked 'pp' and includes slurs, accents, and dynamic markings. The piano accompaniment is in the bass clef, with a 'Pedal' marking in a box. The system concludes with a double bar line and a circled fermata symbol.

Handwritten musical score for the second system of 'Teil 5'. It continues the melody and piano accompaniment from the first system. The piano part includes a 'Pedal' marking. The system ends with a circled fermata symbol.

Handwritten musical score for the third system of 'Teil 5'. It continues the melody and piano accompaniment. A box labeled 'Lunga' is present in the piano part. The system concludes with a double bar line and a circled fermata symbol.

Leute (♩) sehr schwach - sehr langsam

(mit sehr viel Hall)

Handwritten musical score for the first system. It consists of two staves: a piano staff (treble clef) and a bass staff (bass clef). The piano staff contains a series of notes with slurs, and a circled 'pp' dynamic marking is present. The bass staff contains notes with slurs. The system is divided into two measures by a vertical bar line.

Pedal zart

Handwritten musical score for the second system. It consists of two staves: a piano staff (treble clef) and a bass staff (bass clef). The piano staff contains notes with slurs and a 'Cluster - Tonbund' annotation below it. The bass staff contains notes with slurs.

Cluster - Tonbund

(ganz frei) über Saiten!

Handwritten musical score for the third system. It consists of two staves: a piano staff (treble clef) and a bass staff (bass clef). The piano staff contains notes with slurs and a 'D. C. al F. in' annotation on the right. The bass staff contains notes with slurs and a 'Pedal aus' annotation at the bottom right. A vertical dashed line is drawn across both staves, and a horizontal arrow points from the 'D. C. al F. in' annotation to the right.

D. C. al F. in

Pedal aus

Teil ⑥

⑥

Lang frei)

Handwritten musical score for the first system of 'Teil 6'. It features a vocal line with a melodic line and a piano accompaniment. The piano part includes a 'Pedal' section with a 'grossem Cluster' indicated by a hatched rectangle. Dynamics include 'ff' and 'f'.

Handwritten musical score for the second system of 'Teil 6'. It continues the vocal and piano parts from the first system. The piano part includes another 'Pedal' section with a hatched rectangle. Dynamics include 'ff' and 'f'.

Lento

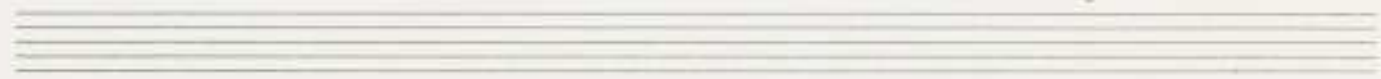
Handwritten musical score for the third system of 'Teil 6', marked 'Lento'. It features a vocal line and a piano accompaniment with a complex rhythmic pattern. Dynamics include 'ff' and 'f'. A circled 'rit.' is present.

Prestissimo

Handwritten musical score for the first system. The piano staff (top) begins with a treble clef and a key signature of one sharp (F#). It contains a circled 'G.P.' in a box, followed by a circled quarter note, and then a series of eighth notes with accents. The bass staff (bottom) starts with a circled quarter note, followed by another circled quarter note, and then a series of eighth notes with accents. Dynamics include 'ppp' and 'crescendo in FM'. A bracket under the bass staff is labeled 'Pedal sempre'.

Handwritten musical score for the second system. The piano staff (top) has a circled quarter note followed by eighth notes with accents. The bass staff (bottom) has eighth notes with accents. Dynamics include 'ppp'.

Handwritten musical score for the third system. A bracket above the piano staff is labeled 'Cluster - Tonband' with 'ppp' and a circled 'P' below it. The piano staff (top) has eighth notes with accents. The bass staff (bottom) has eighth notes with accents. Dynamics include 'ppp' and 'p'.



Handwritten musical notation on a grand staff. The upper staff is in treble clef and the lower in bass clef. The music consists of several measures with notes, rests, and dynamic markings. A circled 'f' is present in the first measure, and a circled 'ff' is in the last measure. There are also some handwritten annotations above the notes.

(zinken (1-2 Minuten))

Handwritten musical notation on a grand staff, heavily scribbled over. The notation is mostly illegible due to dense, overlapping ink. There are some faint markings and a circled 'ff' in the first measure. The text 'R.H.' and 'L.H.' is written above and below the staves respectively.

Handwritten musical notation on a grand staff, also heavily scribbled over. The notation is mostly illegible. There are some faint markings and a circled 'ff' in the first measure. The text 'G1' is written above the first measure.

flümmend

frei - einsetzen - (mit viel Vibrato) Flag.

Handwritten musical score for the first system. The treble clef staff contains two measures of music. The first measure has a note with a flat sign and a dynamic marking 'pp'. The second measure has notes with flats and a dynamic marking 'ff'. The bass clef staff is mostly obscured by a large scribble.

mit viel Hall (breit)

Handwritten musical score for the second system. The treble clef staff contains two measures of music. The first measure has notes with flats and a dynamic marking 'ff'. The second measure has notes with flats and a dynamic marking 'f'. The bass clef staff is mostly obscured by a large scribble.

(großes mit + dem)

Handwritten musical score for the third system. The treble clef staff contains two measures of music. The first measure has notes with flats and a dynamic marking 'pp'. The second measure has notes with flats and a dynamic marking 'p'. The bass clef staff is mostly obscured by a large scribble.

mit größter Ruhe) - Ausrufung - (ganz frei) -
 (wie ein Choral) -

Handwritten musical notation for the first system, featuring a treble and bass clef with notes and rests.

(Pedal -

(ganz frei)

Handwritten musical notation for the second system, including notes, rests, and dynamic markings like 'pp' and 'f'.

Handwritten musical notation for the third system, including notes, rests, and dynamic markings like 'pp' and 'ppp'.

Adolf Schreier 1978