

L.v. BEETHOVEN



W.A. MOZART



NOTENHEFT

F. SCHUBERT



J. HAYDN



J. STRAUSS



~~1. Teil~~

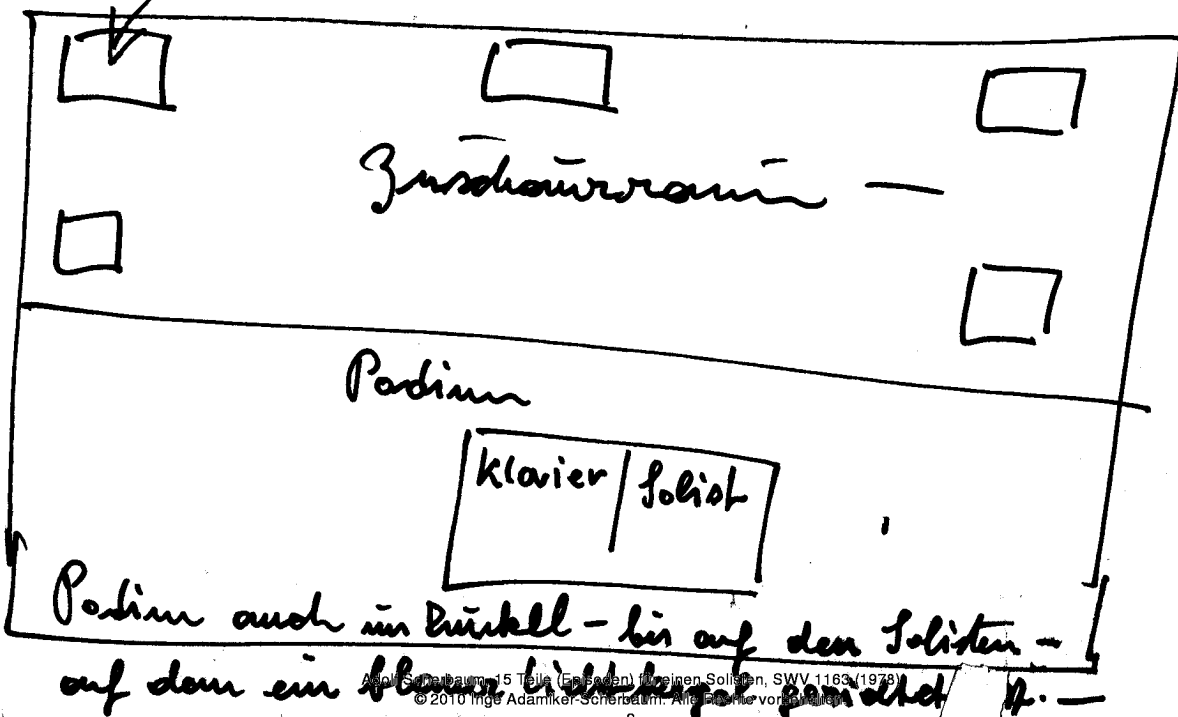
Diese 4 Teile für Flöte und
Klavier habe ich geschrieben
für einen Solisten. —

Der Soloflötist spielt auch den
Klavierspart. — Ich habe diese
Stücke für mich selbst geschrieben. —

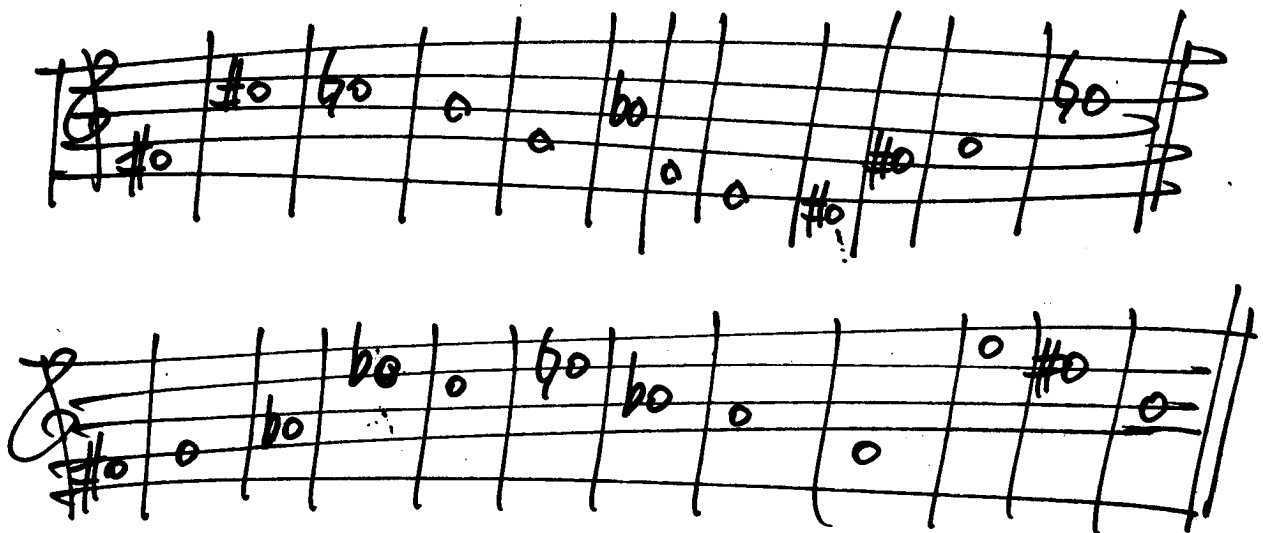
Ich möchte dazu bei Aufführungen
Zusatzmikrophone — mit
Verstärkeranlagen und viel
Hall.

Es sind 4 Teile — mit zwei
Zwölftonleitern — meinen 2 liebsten
Tonleitern — 4 Erlebnisse — aus
meinem Leben. —

große Lautsprecher mit Hall



Ein Versuch — obwohl ich so viele
Kompositionen habe, mit großem
Orchester —
das auch ein Musiker — ein Schicht —
oft genügt — um auch einen großen
Konzertsaal zu füllen. —
Die zwei Lieblingsreihen (Zwölftone) sind



diese Stücke widme ich meiner langjährigen
Lebensgefährtin —
Hildegard Hinterreiter — 1978 —

Adolf Scherbaum

Diese Teile - (15 Teile) - wurden
geschrieben - 1978 (es sind Episoden)
3 Zwölftonreihen habe ich dazu
verwendet. -

Diese Teile sind geschrieben für einen
Solisten - (Flöte - der auch Klavier
dazu spielt - und großem Gong. -

Verstärkeranlagen - mit Lautsprecher -
im Saal verteilt - und sehr viel Hall. -

Die Stücke müssen klingen - als
kämen sie aus riesigen Räumen -
aus Kirchen - bei gewissen Zeichen -

({ } — { }) müssen Clustern - die auf

Tauband aufgenommen würden -

eingebildet werden. - (Taubandaufnahme v. einem
Orchester)

Der Solist steht auf einer Bühne -
Saal vollständig dunkel - nur ein
Lichtkegel - (der immer etwas) seine
Farben ändert - ist auf ihn gerichtet. -
(Hauptfarbe Blau) -

Ich habe für diese Teile 2 meiner
Lieblingsszwölftanreihen verwendet - und
eine dritte Reihe - später dazu kommen. -
Man kann auch zwischen den Teilen -
Texte von Bert Brecht sprechen lassen -
Die ganze Komposition kann all. Zitiern
erweitert werden - das überlasse ich dem
Leiter - der alles leitet. -

Die 15 Teile können auch teilweise mit
einem großen Orchester unterstützt werden -

Es ist alles frei. - Man soll wie das
Gefühl haben - irgend einen Text - einen
Zeitablauf zu spüren. -

Diese Komposition kann bis zu 2 Stunden
ausgedehnt werden. -

Im 1978 Adolf Scherbaum

1. Reihe, Fis, Cis, C, H, G, B, F, E, ~~H~~, Dis, Gis, F, D,
- 2.) " , Fis, G, As, Des, C, D, B, A, F, E, Dis, H, -
- 3.) " (F, G, C, Des, As, Be, H, D, Es, F, E, Fis,)

Handwritten musical score for orchestra and strings. The score is written on multiple staves with various time signatures and key signatures. The instruments listed on the left are:

- 4 V (Violins)
- 4 I (Violas)
- 0 O (Oboes)
- 4 Cl (Clarinets)
- 4 N E (Noble Instruments)
- 4 N (Noble Instruments)
- B R A T S C H E N (Bratschen)
- Celli (Celli)
- Celi (Cello)
- Celli (Cello)
- B A S S E (Basses)

The score includes dynamic markings such as *ppp* and various time signatures like 4/4, 4/8, and 4/16. The notation is handwritten and appears to be a sketch or a working draft.

Orchestercluster.....
 ({{ cluster — bis — }}
 wie Zange — auf Zeichen —
 (20 Violinen) —
 (8 Bratschen) —
 (12 Celli) —
 (8 Bässe) —

dieser Streichercluster
 beinhaltet alle 3
 Zwölffourreihen —
 wird auf Tonband
 aufgenommen —
 ins ad. lib. — bei der
 Komposition für
 Flöte allein (als Solist)
 zeitweise einfließen
 zu werden.)

1978 (Adolf Scherbaum)

4 Teile für einen Solisten.

1978 ~~Scherbaum~~ Scherbaum

(+ Klavier + großem Gong) - ①

Teil ①

Flöte | gang frei gestalten

Flöte

pp

Saiten streichen

R.H.

L.H.

Pedal

mp

pp

f

pp

Pedal

Lento

mp

f

ff

Pedal

gang ①

ff

Pedal

frei) (flüchtig) 8 robato

Luupa

R.H.

L.H.

Pedal

ruhig (frei)

ffp

Pedal

frei) lepp. (rit)

pp

Luupa

ffff

dämpf.

Teile
②

ganz frei

über fäden streichen und reißen.....

Pedal pp (frei- **fff**)

pr. gang
f

ruhig (frei)

VIBRATO

pp

Rand
über fäden
|
streichen

fff (dicht-Cluster)

pp

Lunge

dün bis ↓

ppp

sehr ruhig (♩)

Handwritten musical score for the first system. The top staff is a vocal line with a treble clef and a common time signature. The bottom two staves are for piano accompaniment. The first measure of the piano part is marked 'Pedal' and 'pp'. The piano part consists of a series of chords and notes, with some notes marked with slurs and accents. The tempo is indicated as 'sehr ruhig' and the time signature as '(♩)'. There are various accidentals (sharps, flats) and dynamic markings throughout the system.

Handwritten musical score for the second system. It continues the vocal and piano parts from the first system. The piano part features a series of chords and notes, with some notes marked with slurs and accents. The tempo remains 'sehr ruhig'.

frei (♩)

Handwritten musical score for the third system. The top staff is a vocal line with a treble clef and a common time signature. The bottom two staves are for piano accompaniment. The first measure of the piano part is marked 'pp' and 'Pedal'. The piano part consists of a series of chords and notes, with some notes marked with slurs and accents. The tempo is indicated as 'frei' and the time signature as '(♩)'. There are various accidentals (sharps, flats) and dynamic markings throughout the system. A circled 'P' with a bracket and the number '3' is present in the piano part.

gr. lang R

rubato

Handwritten musical score for the first system. The top staff contains a melodic line with a circled 'a1' above it, a dynamic marking 'ff', and a triplet of notes. The bottom staff contains a bass line with a circled 'b1' above it and the instruction 'Pedal bleibt' (Pedal stays). The system concludes with a double bar line.

Handwritten musical score for the second system. The top staff features a melodic line with a circled 'a2' above it, including a wavy line and a sharp sign. The middle and bottom staves show piano accompaniment with vertical strokes and dynamic markings. The system ends with a double bar line.

Handwritten musical score for the third system. The top staff has a melodic line with a circled 'a3' above it, including a wavy line and a sharp sign. The bottom staff features piano accompaniment with vertical strokes, a circled 'b3' above it, and the instruction 'Pedal bleibt'. A box labeled 'rit + dim' with arrows indicates a ritardando and dynamic decrease. The system ends with a double bar line and a circled '10' below it.

Teil ③

oder *ritard.* (erregt)

ritato (erregt/frei) = *breit*

[Pedal]

rubato

Flatterzunge

Cluster für Orchester
pp

librato

breit

breit

Padal bleibt

immer schwächer (Cluster)

zart

largo — *sehr langsam* / *frei*

largo

G. P.

z. lang

Lento

Handwritten musical score for the first system, measures 1-3. The system consists of three staves: a single treble clef staff at the top, and a grand staff (treble and bass clefs) below. The tempo is marked "Lento".
- Measure 1: Treble clef has a whole rest. Grand staff has a whole note chord with notes G2, B1, D2, F2. A circled "P" with an equals sign is written above the bass clef. A "Pedal" bracket is under the bass clef.
- Measure 2: Treble clef has a half note G2 with a flat, a quarter note B1 with a flat, and a quarter note D2 with a flat. Grand staff has a whole note chord with notes G2, B1, D2, F2. Dynamics include "pp" and "f".
- Measure 3: Treble clef has a half note G2 with a flat, a quarter note B1 with a flat, and a quarter note D2 with a flat. Grand staff has a whole note chord with notes G2, B1, D2, F2. Dynamics include "f".

Handwritten musical score for the second system, measures 4-6. The system consists of three staves: a single treble clef staff at the top, and a grand staff (treble and bass clefs) below.
- Measure 4: Treble clef has a quarter note G2 with a flat, a quarter note B1 with a flat, and a quarter note D2 with a flat. Grand staff has a whole note chord with notes G2, B1, D2, F2.
- Measure 5: Treble clef has a half note G2 with a flat, a quarter note B1 with a flat, and a quarter note D2 with a flat. Grand staff has a whole note chord with notes G2, B1, D2, F2. Dynamics include "f" and "ff".
- Measure 6: Treble clef has a half note G2 with a flat, a quarter note B1 with a flat, and a quarter note D2 with a flat. Grand staff has a whole note chord with notes G2, B1, D2, F2. Dynamics include "p".

Handwritten musical score for the third system, measures 7-9. The system consists of three staves: a single treble clef staff at the top, and a grand staff (treble and bass clefs) below.
- Measure 7: Treble clef has a whole rest. Grand staff has a whole note chord with notes G2, B1, D2, F2. Dynamics include "p".
- Measure 8: Treble clef has a half note G2 with a flat, a quarter note B1 with a flat, and a quarter note D2 with a flat. Grand staff has a whole note chord with notes G2, B1, D2, F2. Dynamics include "p".
- Measure 9: Treble clef has a half note G2 with a flat, a quarter note B1 with a flat, and a quarter note D2 with a flat. Grand staff has a whole note chord with notes G2, B1, D2, F2. Dynamics include "p".

Handwritten musical score for the first system. The top staff is in treble clef and the bottom staff is in bass clef. The music consists of several notes in the treble staff and a series of notes in the bass staff. A piano dynamic marking (*p*) is present. The text " sempre Pedale" is written below the bass staff.

Handwritten musical score for the second system. The top staff is in treble clef and the bottom staff is in bass clef. The music includes notes, rests, and a cluster of notes in the bass staff. A bracketed annotation "Cluster für Orchest" with a *pp* dynamic marking is present. The text "Cluster für Orchest" is written above the bass staff.

Handwritten musical score for the third system. The top staff is in treble clef and the bottom staff is in bass clef. The music includes notes, rests, and a cluster of notes in the bass staff. Performance instructions include "(frei)", "Lungu", and "dicht Trill". A *pp* dynamic marking is present. The text "Cluster" is written below the bass staff.

Teil 4

links (d)

6
p
Pedal

sang frei (Altflöte - südlich nordisch - viel Viburto -

pp
Pedal bleibt
dichtesten Cluster

p
pp

(♩) *Lento*

Handwritten musical score for piano. The right hand part features a dense cluster of notes, marked with a circled '8' and a sharp sign. The left hand part has a melodic line with accents and a 'Pedal' marking. A box labeled 'Cluster tief' is written below the right hand part, with 'pp' written above it.

Alt. forte (paz frei) mit viel Hall =

Handwritten musical score for piano, showing a melodic line with dynamics like 'p', 'f', and '> p'. There are also some markings like '1' and '2' above the notes.

Handwritten musical score for piano, featuring a melodic line with dynamics like 'p' and 'pp', and a 'frei' marking. There are also some markings like '1' and '2' above the notes.

breit (appassionata)

Handwritten musical score for piano, featuring a melodic line with dynamics like 'pp' and 'Lento', and a 'Lunga' marking. There are also some markings like '1' and '2' above the notes.

sehr ruhig - frei

Handwritten musical score for piano. The piece is in 4/4 time and marked *pp*. The score consists of three measures. The first measure has a treble clef and a bass clef. The second and third measures have a treble clef. The score includes various chordal structures and dynamic markings. A large bracket labeled "Pedal" spans the first two measures. Below the first measure, there is a handwritten note: "Pedal -> # ||| p.". Below the second measure, there is a handwritten note: "Pedal -> # f. 8-". Below the third measure, there is a handwritten note: "Pedal -> 7 f. 8-".

Handwritten musical score with performance instructions. The score is in 4/4 time and marked *pp*. The first measure has a treble clef and a bass clef. The second measure has a treble clef. The score includes various chordal structures and dynamic markings. A large bracket labeled "Pedal" spans the first two measures. The instructions are: "leicht und ganz frei" (written above the treble staff), "sehr rasch" (written above the bass staff), and "über Saiten streichen" (written below the bass staff).

Handwritten musical score with dynamic markings. The score is in 4/4 time and marked *pp*. The first measure has a treble clef and a bass clef. The second measure has a treble clef. The score includes various chordal structures and dynamic markings. A large bracket labeled "Cluster für Orchester" spans the first two measures. The dynamic markings are: *f* (circled), *ff* (circled), *fff* (circled), and *fff* (circled).

Normalflöte -

frei-rubato

Handwritten musical notation for the first system. It features a treble clef, a key signature of one flat (B-flat), and a melodic line with various ornaments, slurs, and dynamic markings. The notation is dense and expressive, typical of a 'frei-rubato' style.

Handwritten musical notation for the second system. It shows a bass clef and a circled 'mf' dynamic marking. The notation is less dense than the first system, with some vertical lines and a few notes.

Handwritten musical notation for the third system. It includes a treble clef, a key signature change to two flats (B-flat and E-flat), and a 'Cupa' marking. The notation is complex, with many notes and slurs.

Handwritten musical notation for the fourth system. It features a bass clef and a 'pp' dynamic marking. The notation consists of a few notes and slurs.

ausklingen lassen
bis ppp

G.P.

Mittelflöte) sehr frei - ruhig - langsam (viel Vibrato) und Hall

(1)

pp. Clustern
(sehr dicht -)

Pedal
pp

pp. Clustern
(sehr dicht -)

Pedal
pp

Largo - *grüßte sie + dir*

pp. Clustern
(sehr dicht -)

Pedal
pp

Lunga

Teil ②

(5 Teile — (Teil 2)

für einen Solisten

1978

Teil ①

lung frei

Normal Flöte

R.H.
L.H.

Pedal

Pedal

Prestinissimo (legg.)

Leute

Pedal

frei

mp

Lunga

cluster

Pedal

pp

adi. lib.

pp

Pedal bleibt

ffp

Lunga

ppp

cluster für orchestra

Pedal

pp

ppp

pp

Teil ②

sehr würdig (breit)

(♩)

ff

Pedal

Cluster für
orchestra

G.P.

Pedal

über Paiten

sehr langsam (Schreibband)

Handwritten musical score for the first system. It consists of a treble clef staff and a bass clef staff. The treble staff contains several measures of music with notes and rests, some marked with accents. The bass staff contains notes and rests, with a *pp* marking. A *Pedal* marking is written below the bass staff.

Handwritten musical score for the second system. It consists of a treble clef staff and a bass clef staff. The treble staff contains several measures of music with notes and rests, some marked with accents. The bass staff contains notes and rests, with a *pp* marking.

Handwritten musical score for the third system. It consists of a treble clef staff and a bass clef staff. The treble staff contains several measures of music with notes and rests, some marked with accents. The bass staff contains notes and rests, with a *ppp* marking. A *Lupa* marking is circled in the treble staff. A *Pedal* marking is written below the bass staff.

Teil ②

Messtoso / ad lib (sei) breit

Handwritten musical score for the first system. It features a treble clef staff with a melodic line and a grand staff (treble and bass clefs) with accompaniment. The key signature has two sharps (F# and C#). The time signature is 4/8. The melodic line starts with a circled '1' and includes dynamic markings like 'fff' and 'cresc.' with a 'breit' instruction. The accompaniment consists of chords with accents and slurs.

Handwritten musical score for the second system, similar to the first. It includes a treble clef staff and a grand staff. The melodic line has a circled '1' and dynamic markings like 'cresc.' and 'breit'. The accompaniment features chords with accents and slurs.

Flöte (Solo) (1)

Handwritten musical score for the Flöte (Solo) part. It is written on a single treble clef staff. The key signature has two sharps. The score includes dynamic markings like 'pp', 'ff', and 'ppp' along with 'Lunga' and 'dim.' instructions. There are also slurs and accents throughout the piece.

sehr ruhig (Vibrato)

Handwritten musical score for the first system. The treble clef staff contains a melodic line with dynamics *pp* and *mp*, and various articulations including slurs and accents. The bass clef staff features a circled *ff* and a *Pedal* label.

Handwritten musical score for the second system. The treble clef staff contains a melodic line with dynamics *pp* and *mp*. The bass clef staff features a circled *ff* and a *Pedal* label.

Handwritten musical score for the third system. It begins with the instruction *Flöte (frei) legg. (♩)*. The treble clef staff contains a melodic line with dynamics *f*, *p*, *pp*, and *mp*. The bass clef staff features a circled *ff* and a *Pedal* label. There are also handwritten notes *gr. Gang* and *Lungpa*.

Teil ④

Prestissimo

Handwritten musical score for the first system. The system consists of two staves. The upper staff is a treble clef with a whole rest. The lower staff is a grand staff (treble and bass clefs) with a 2/4 time signature. The music begins with a piano dynamic marking 'ppp' and a fermata. The first measure contains a half note chord with a sharp sign and a fermata. The second measure contains a half note chord with a sharp sign and a fermata. The third and fourth measures contain half notes with accents. The fifth and sixth measures contain half notes with accents. The seventh and eighth measures contain half notes with accents. The system ends with a fermata. A double bar line is drawn below the system.

Handwritten musical score for the second system. The system consists of two staves. The upper staff is a treble clef with a whole rest. The lower staff is a grand staff (treble and bass clefs) with a piano dynamic marking 'pp' and a fermata. The first measure contains a half note chord with a sharp sign and a fermata. The second measure contains a half note chord with a sharp sign and a fermata. The third and fourth measures contain half notes with accents. The fifth and sixth measures contain half notes with accents. The seventh and eighth measures contain half notes with accents. The system ends with a fermata. A double bar line is drawn below the system.

Handwritten musical score for the third system. The system consists of two staves. The upper staff is a treble clef with a whole rest. The lower staff is a grand staff (treble and bass clefs) with a piano dynamic marking 'p' and a fermata. The first measure contains a half note chord with a sharp sign and a fermata. The second measure contains a half note chord with a sharp sign and a fermata. The third and fourth measures contain half notes with accents. The fifth and sixth measures contain half notes with accents. The seventh and eighth measures contain half notes with accents. The system ends with a fermata. A double bar line is drawn below the system.

Handwritten musical score system 1. It features a grand staff with treble and bass clefs. The right hand has a few notes with accents, while the left hand has a melodic line with a sharp sign. There are five measures with some rests and slurs.

Handwritten musical score system 2. Similar to system 1, it shows a grand staff with more notes and accents in the right hand. The left hand has a bass line. A dynamic marking 'ff' is present at the end of the system.

Handwritten musical score system 3. This system includes a bracketed section labeled 'Cluster für Orchester' with dynamic markings 'pp' and 'ffff'. The main score continues with notes and accents, and a circled 'ffff' in the left hand. A large cluster of notes is written at the end of the system. A handwritten word 'Rebel' is in the bottom left corner.

frei *erregt*

ff

Chester Tonband

flüchtig *erregt*

pp f ff

(flüchtig)

Handwritten musical score for the first system. It consists of two staves: a treble clef staff and a bass clef staff. The treble staff begins with a treble clef, a key signature of one sharp (F#), and a common time signature (C). It contains several notes with slurs and accents, including a half note with a flat (b) and a quarter note with a sharp (F#). A large bracket spans across both staves, with the word "Lento" written above it. In the upper right of the treble staff, there are several vertical lines resembling a tremolo or a specific articulation. The bass staff starts with a bass clef and contains notes with slurs and accents, including a half note with a flat (b) and a quarter note with a sharp (F#). The word "Pedal" is written below the bass staff. At the end of the system, there is a box containing the letters "G. P." and the instruction "verklingen lassen ppp".

Prestissimo

Handwritten musical score for the second system, titled "Prestissimo". It features a treble clef staff and a bass clef staff. The time signature is 2/4, and the key signature is one sharp (F#). The bass staff begins with a treble clef and contains notes with slurs and accents. A large bracket spans across both staves. Above the treble staff, there are seven measures, each marked with a number from 1 to 7. The word "Pedal" is written below the bass staff. The system concludes with a double bar line and a final flourish.

legg. (frei)

Handwritten musical score for the third system. It features a treble clef staff and a bass clef staff. The treble staff begins with a treble clef and a key signature of one sharp (F#). It contains notes with slurs and accents, including a half note with a flat (b) and a quarter note with a sharp (F#). The word "legg. (frei)" is written above the treble staff. The word "pp" is written below the treble staff. The word "ff" is written below the bass staff. The word "nicht Teil" is written above the treble staff. The word "Lungo" is written above the bass staff. The system concludes with a double bar line and a final flourish.

Pr. Lang (M)

Teil 5

ganz frei (schl. -) ff/ste - $\text{geräuschig motivisch}$
viel Hall - -

Handwritten musical score for the first system. The treble clef staff contains a series of notes with various slurs and accents. Dynamic markings include f and pp . A circled \oplus is present at the beginning. The bass clef staff has a whole rest.

Handwritten musical score for the second system. The treble clef staff is marked "ganz frei" and contains notes with slurs and dynamic markings like pp . The bass clef staff features a hatched rectangular area labeled "Pedal" with an 8-measure bracket.

Handwritten musical score for the third system. The treble clef staff is marked "frei" and contains notes with slurs and dynamic markings like pp and ppp . The word "Vibrato" is written above the final notes. The bass clef staff has a whole rest.

religioso Flöte -

Handwritten musical score for the first system. The piano part is in 4/4 time, marked *pp* (pianissimo). The flute part is in 6/8 time. The piano accompaniment consists of a steady eighth-note pattern in the right hand and a similar pattern in the left hand, with a *Pedal* marking. The flute part has a melodic line with slurs and accents. There are some handwritten annotations, including a circled *f* and a circled *f* in the piano part.

frei -

Handwritten musical score for the second system. The tempo is marked *frei* (ad libitum). The piano part features a complex rhythmic pattern with slurs and accents. The flute part has a melodic line with slurs and accents. There are some handwritten annotations, including a circled *f* and a circled *f* in the piano part.

Handwritten musical score for the third system. The piano part features a complex rhythmic pattern with slurs and accents. The flute part has a melodic line with slurs and accents. There are some handwritten annotations, including a circled *pp* and a circled *f* in the piano part. The system ends with a double bar line and a circled *f*.

Lento cluster (Tonhaufen) pp <=> pp

Handwritten musical score for piano. The top staff is a grand staff with a treble clef. The tempo is marked "Lento". A bracketed section is labeled "cluster (Tonhaufen)" with dynamics "pp" and a double-headed arrow. Below this, the right hand has a cluster of notes with a slur and a fermata. The left hand has a pedal point marked "Pedal" with a bracket and a fermata. The key signature has two sharps (F# and C#) and the time signature is 6/4. The score includes various musical notations such as slurs, accents, and dynamic markings.

Handwritten musical score for piano. The top staff is a grand staff with a treble clef. The tempo is marked "Lento". The right hand has a melodic line starting with a dynamic marking "pp" and a slur. The left hand has a bass line starting with a dynamic marking "pp" and a slur. The score includes various musical notations such as slurs, accents, and dynamic markings. A circled "G.P." is written in the bottom staff.

mit größter Kraft)

Flöte - Solo (Vibrato) -

RUHIG Lento (Vibrato)

3. Teil —

Solo für einen Solisten —
der auch das Klavierpart
spielt.

1978,

Adolf Scherbaum

(6 Teile) — Variationen!

sehr

Teil ①

frei (ruhig) viel Vibrato

①

poco rit -

Prima (protesk)

Flöte

$\frac{3}{4}$

D.C. al Fine

Teil ②

frei - rubato Flöte -

Handwritten musical score for the first system. The top staff is for the flute, and the bottom staff is for the piano. The time signature is 6/4. The piano part begins with a dynamic marking of *pp*. The music consists of several measures with various notes and rests, including some accidentals like flats and naturals.

frei - rubato

Handwritten musical score for the second system. It includes a circled *p* dynamic marking. The piano part has a section labeled "Pedal" with a circled *p* dynamic marking. The notation includes various notes, rests, and accidentals, with some notes beamed together.

mehr rubatissimo

Handwritten musical score for the third system. It features a circled *p* dynamic marking. The piano part has a section labeled "Pedal" with a circled *p* dynamic marking. The notation includes various notes, rests, and accidentals, with some notes beamed together.

Dr. Faust

breit

mit größtem Ausdruck

sehr ruhig

viel

trillando

Pedal

schwebend

sehr energisch

Teil ③

hektische (frei-rubato) ③

ff (Flutterzunge -)

Pedal

(frei)

ohne Flutterzunge

(frei-energie)

Bliss

erregt bewegt

Handwritten musical score for the first system. The treble staff contains notes with accidentals (flats and sharps) and slurs. The bass staff contains notes with slurs and a dynamic marking of **hart!**. A fermata is placed over the end of the treble staff.

Handwritten musical score for the second system. The treble staff features notes with slurs and a dynamic marking of **pp**. A section is marked **legg.** with a triplet of notes. The bass staff contains vertical lines representing a pedal point.

Handwritten musical score for the third system. The treble staff has notes with slurs and dynamic markings of **pp** and **ff**. The bass staff includes a section labeled **Pedal** with vertical lines and a **lunga** marking. The system concludes with a wavy line in the bass staff.

Teil 4

(bei D.C.)

con sord. Clavier **(4)** ppp - sempre - bis Schluss - von ev. Orchester

Preziosissimo

Flöte Solo -

(mit sehr stark Hall - schwebend)

ppp < schwebend

Steigerung =>

(f) < 2tes ab hier Flatterzunge - bis ♯

Handwritten musical notation on a single staff. It features a series of chords with various accidentals (flats and sharps) and dynamic markings. The text "wieder normal" is written below the staff.

Handwritten musical notation on a single staff. It includes a 4/4 time signature and dynamic markings such as *ppp*, *ff*, and *pp*. The text "sempre din / immer schwächer / bis ppp" is written above the staff, and "mit viel Halt - schreiben" is written below.

Handwritten musical notation on a single staff, consisting of a wavy line representing a melodic or vibrato line. It includes dynamic markings like *ff* and *pp*, and the text "flüsternd" with an arrow pointing to the right.

Handwritten musical notation on a single staff, consisting of a wavy line. It includes dynamic markings like *p* and *ff*.

Handwritten musical notation on a single staff. It features a series of notes with accidentals and dynamic markings. A circled "D.C." is written at the end of the staff.

Handwritten musical notation on a single staff. It shows a sequence of notes with dynamic markings *ppp* and *pppp*. The numbers 1 through 7 are written above the notes.

Teil 5

Ad lib (langsam)

5

Handwritten musical score for the first system of 'Teil 5'. It features a treble clef staff with a melodic line and a grand staff (treble and bass clefs) with a piano accompaniment. The key signature has one sharp (F#). The tempo is 'Ad lib (langsam)'. A circled '5' is written above the first measure. The piano part includes a circled 'P' and a circled 'Pedal' label. The system ends with a double bar line and a circled 'F'.

Handwritten musical score for the second system of 'Teil 5'. It continues the melodic and piano accompaniment from the first system. The piano part includes a circled 'P' and a circled 'Pedal' label. The system ends with a double bar line and a circled 'F'.

Handwritten musical score for the third system of 'Teil 5'. It concludes the piece with a final melodic phrase and piano accompaniment. The piano part includes a circled 'P' and a circled 'Pedal' label. A box labeled 'lunga' is written above the final measure. The system ends with a double bar line and a circled 'F'.

Leute (♩) sehr schwebend - sehr langsam

(mit sehr viel Hall)

Handwritten musical score for the first system. It consists of two staves: a piano staff on top and a bass staff on the bottom. The piano staff begins with a circled **pp** dynamic marking. The music features a series of notes with slurs, some of which are beamed together. The bass staff has fewer notes, often appearing as single notes or pairs. The system concludes with a bracketed instruction: **Pedal ganz**.

Handwritten musical score for the second system, continuing from the first. It features piano and bass staves with notes and slurs. The piano staff has several notes with slurs, and the bass staff has fewer notes. The system concludes with a bracketed instruction: **Cluster - Tonbund**.

(ganz frei) über Saiten!

Handwritten musical score for the third system. It features piano and bass staves. The piano staff has notes with slurs. A large arrow points from the text "(ganz frei) über Saiten!" to a diagram of a string cluster on the piano staff. The diagram shows a series of notes with circles above them, representing a cluster. The system concludes with a vertical box on the right side containing the text **D. C. al F. in**. Below the piano staff, there is a circled **p** dynamic marking and the instruction **Pedal aus**.

Teil ⑥

⑥

lang (rei)

Pedal

(weisen Cluster)

Lento

1

Prehissimo —

Handwritten musical score for the first system. The top staff is a treble clef with a whole rest. The bottom staff is a grand staff (piano and bass). The piano part starts with a circled note, followed by a circled note with 'ppp' written above it. A bracket spans the next two measures with 'crescendo bis FMM' written below. The bass part has a circled note with 'ppp' written below it. A large slur covers the piano part from the second measure to the end, with 'Pedal sempre' written below it. There are accents (^) over several notes in both parts.

Handwritten musical score for the second system. The top staff is a treble clef with a whole rest. The bottom staff is a grand staff. The piano part has a circled note with an accent (^) above it. The bass part has a circled note with an accent (^) above it. There are several notes with accents (^) in both parts. A large slur covers the piano part from the first measure to the end.

{ Cluster = Tonband }
ppp

Handwritten musical score for the third system. The top staff is a treble clef with a whole rest. The bottom staff is a grand staff. The piano part has a circled note with an accent (^) above it. The bass part has a circled note with an accent (^) above it. There are several notes with accents (^) in both parts. A large slur covers the piano part from the first measure to the end. There are some handwritten markings below the bass staff, including a circled 'p' and some arrows.

(zirka (1-2 Minuten))

flümmend

frei - einsetzen - (mit viel Vibrato) Flag.

Handwritten musical notation for the first system. The top staff contains notes with accidentals (flats and naturals) and dynamic markings: *pp* and *f*. The bottom staff is heavily scribbled out with dark ink.

mit viel Hall (breit)

Handwritten musical notation for the second system. The top staff features notes with various accidentals and dynamic markings: *ff*, *f*, and *f*. The bottom staff is also scribbled out.

(großes mit f din)

Handwritten musical notation for the third system. The top staff includes notes with accidentals and dynamic markings: *f*, *f*, *f*, *f*, and *pp*. The bottom staff is scribbled out. On the right side, there is a vertical box containing the letters "G." and "P." stacked vertically.

mit größter Ruhe) - Ausrufung - (ganz frei) -
 (wie ein Choral) -

Handwritten musical notation for the first system, featuring a treble and bass clef with various notes and rests.

(Pedal —)

(ganz frei)

Handwritten musical notation for the second system, including a treble clef and a circled 'f' dynamic marking.

Handwritten musical notation for the third system, showing a melodic line with various dynamics like 'pp' and 'gr. lang'.

pp Cluster - Tonband.

gr. lang

51 Adolf Scherbaum 1978