

L.v. BEETHOVEN



W.A. MOZART



# NOTENHEFT

F. SCHUBERT



J. HAYDN



J. STRAUSS





~~vorl. Nr. 257~~

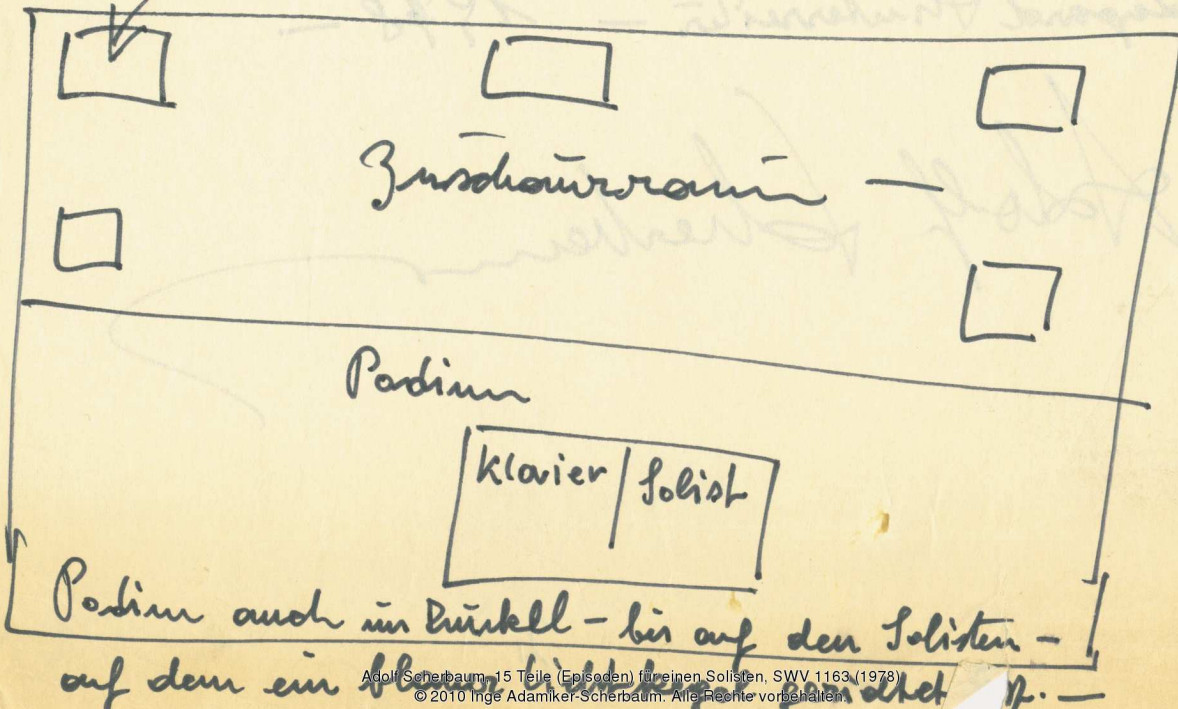
Diese 4 Teile für Flöte und  
Klavier habe ich geschrieben  
für einen Solisten. —

Der Soloflötist spielt auch den  
Klavierspart. — Ich habe diese  
Stücke für mich selbst geschrieben. —

Ich möchte dazu bei Aufführungen  
Zusatzmikrophone — mit  
Verstärkeranlagen und viel  
Hall.

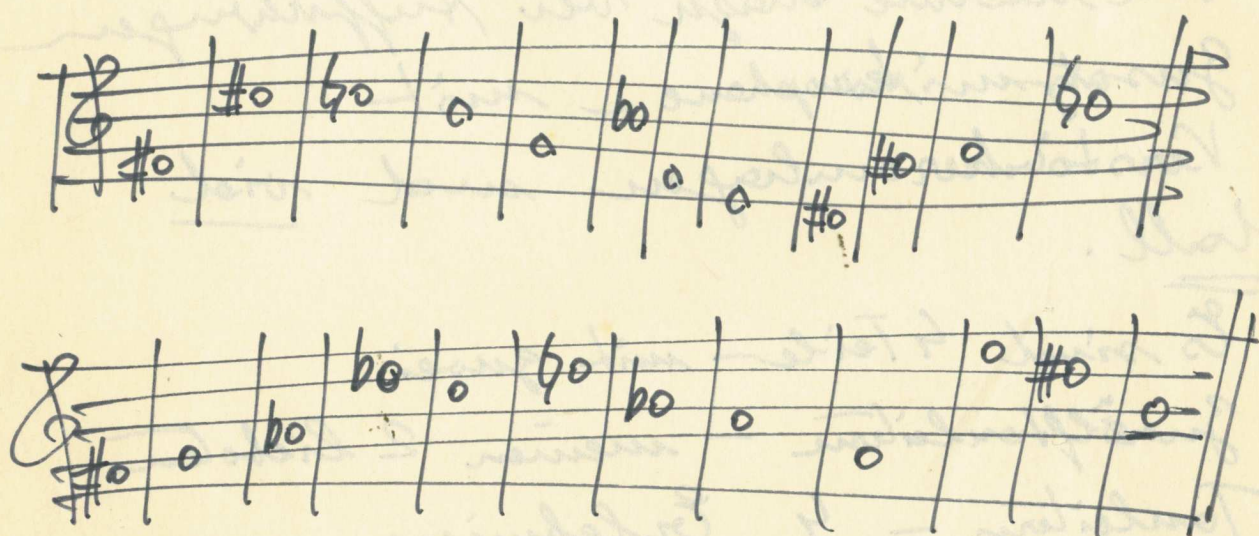
Es sind 4 Teile — mit zwei  
Zwölftonleitern — meinen 2 liebsten  
Tonleitern — 4 Erlebnisse — aus  
meinem Leben. —

große Lautsprecher mit Hall





Ein Versuch — obwohl ich so viele  
Kompositionen habe, mit großem  
Orchester —  
das auch ein Musiker — ein Schicht —  
oft genügt — um auch einen großen  
Konzertsaal zu füllen. —  
Die zwei Lieblingsreihen (Zwölftone) sind



diese Stücke widme ich meiner langjährigen  
Lebensgefährtin —  
Hildegard Hinterriter — 1978 —

Adolf Scherbaum



Diese Teile - (15 Teile) - wurden  
geschrieben - 1978 (es sind Episoden)  
3 Zwölftonreihen habe ich dazu  
verwendet. -

Diese Teile sind geschrieben für einen  
Solisten - (Flöte - der auch Klavier  
dazu spielt - und großem Gong. -

Verstärkeranlagen - mit Lautsprecher -  
im Saal verteilt - und sehr viel Hall. -

Die Stücke müssen klingen - als  
kämen sie aus riesigen Räumen -  
aus Kirchen - bei gewissen Zeichen -

(  $\{\} - \{\}$  ) müssen Clustern - die auf

Tauband aufgenommen würden -

eingebildet werden. - (Taubandaufnahme v. einem  
Orchester)

Der Solist steht auf einer Bühne -  
Saal vollständig dunkel - nur ein  
Lichtkegel - (der immer etwas) seine  
Farben ändert - ist auf ihn gerichtet. -  
(Hauptfarbe Blau) -



Ich habe für diese Teile 2 meiner  
Lieblingsszwölftonreihen verwendet - und  
eine dritte Reihe - später dazugeschrieben -  
Man kann auch zwischen den Teilen -  
Texte von Bert Brecht sprechen lassen -  
Die ganze Komposition kann alt. Zibitum  
erweitert werden - das überlasse ich dem  
Leiter - der alles leitet. -

Die 15 Teile können auch teilweise mit  
einem großem Orchester unterstützt werden -

Es ist alles frei. - Man soll wie das  
Gefühl haben - irgend einen Text - einen  
Zeitablauf zu spüren. -

Diese Komposition kann bis zu 2 Stunden  
ausgedehnt werden. -

Uing 1978 Adolf Scherbaum

1. Reihe, Fis, Cis, C, H, G, B, F, E, ~~H~~, Dis, Gis, F, D,
- 2.) " , Fis, G, As, Des, C, D, B, A, F, E, Dis, H, -
- 3.) " ( F, G, C, Des, As, Be, H, D, Es, F, E, Fis, )



Handwritten musical score for a string orchestra. The score is written on multiple staves, each with a clef and a key signature. The instruments listed on the left are:

- 4 Violins I (V I)
- 4 Violins II (V II)
- 0 Violas (V)
- 4 Cellos I (C I)
- 4 Cellos II (C II)
- 4 Double Basses (BASS)
- BRASS (BASS)

The score includes dynamic markings such as *ppp* and *ppp*. The key signature is G major (one sharp). The time signature is 4/4. The score is written in a cursive, handwritten style.

Orchestercluster.....  
 ( {{ Cluster — bis — }}  
 wie Zange — auf Zeichen —  
 ( 20 Violinen ) —  
 ( 8 Bratschen ) —  
 ( 12 Celli ) —  
 ( 8 Bässe ) —

dieser Streichercluster  
 beinhaltet alle 3  
 Zwölffourreihen —  
 wird auf Tonband  
 aufgenommen —  
 ins ad. lib. — bei der  
 Komposition für  
 Flöte allein ( als Solist )  
 zeitweise einblendet  
 zu werden.)

1978 (Adolf Scherbaum)



4 Teile für einen Solisten.

1978 Adolf Scherbaum

(+ Klavier + großem Gong) - ①

Teil ①

Flöte | gang frei gestalten

FLÖTE

KLAVIER  
Pedal

über  
pp  
Saiten  
streichen

R.H.

L.H.

Handwritten musical score for the second system. It consists of two staves: a treble clef staff for the flute and a grand staff for the piano. The piano part is divided into Right Hand (R.H.) and Left Hand (L.H.) sections. The flute part features melodic lines with various dynamics including *pp*, *mp*, and *f*. The piano part consists of sustained chords and textures, with *pp* dynamics in the right hand and *f* dynamics in the left hand.

Handwritten musical score for the third system. It features a treble clef staff for the flute and a grand staff for the piano. The piano part includes a section marked *Lento*. The flute part has melodic passages with dynamics ranging from *mp* to *ff*. The piano part shows complex textures with *pp* and *ff* dynamics.

gong ①



frei) (flüchtiger Ton)

8 *robato*

Lunpa

pp

ruhig (frei)

ffp

Pedal

frei) *legg.*

(rit)

Lunpa

pp

pppp klumpf.



Teil  
②

ganz frei

über fäden streicher und reißen.....

8<sup>va</sup> *pp* (frei- *fff*)

*pr. gang*  
*f*

ruhig (frei)

*pp* (VIBRATO) *f*

Rand über fäden  
*pp*  
|  
streichen

*fff* *pp* *lungu*

*fff* (dicht-Cluster)

dies bis ↓  
=> *ppp*



sehr ruhig (♩)

Handwritten musical score for the first system. The top staff is a vocal line with a treble clef and a common time signature. The bottom two staves are for piano accompaniment. The first measure of the piano part is marked 'Pedal' and 'pp ='. The piano part consists of a series of chords and notes, with some notes marked with 'p' and 'f' dynamics. The system is enclosed in a large bracket.

Handwritten musical score for the second system. It continues the vocal and piano parts from the first system. The piano part features a series of chords and notes, with some notes marked with 'p' and 'f' dynamics. The system is enclosed in a large bracket.

frei (♩)

Handwritten musical score for the third system. The top staff is a vocal line with a treble clef and a common time signature. The bottom two staves are for piano accompaniment. The first measure of the piano part is marked 'pp' and 'Pedal'. The piano part consists of a series of chords and notes, with some notes marked with 'p' and 'f' dynamics. The system is enclosed in a large bracket. The text 'gr. lang' is written below the piano part.



rubato

Handwritten musical score for the first system. It consists of three staves. The top staff is in treble clef and contains a melodic line with a circled '1' above it, a *ff* dynamic marking, a triplet of notes, and a slur. The middle staff is in alto clef and contains a chordal accompaniment with a circled 'ff' and the instruction 'Pedal bleibt'. The bottom staff is in bass clef and contains a simple bass line.

Handwritten musical score for the second system. It consists of three staves. The top staff is in treble clef and contains a melodic line with a circled '1' above it, a slur, and a circled 'ff'. The middle staff is in alto clef and contains a chordal accompaniment with a circled 'ff' and the instruction 'Pedal bleibt'. The bottom staff is in bass clef and contains a simple bass line.

Handwritten musical score for the third system. It consists of three staves. The top staff is in treble clef and contains a melodic line with a circled '1' above it, a slur, and a circled 'ff'. The middle staff is in alto clef and contains a chordal accompaniment with a circled 'ff' and the instruction 'Pedal bleibt'. The bottom staff is in bass clef and contains a simple bass line. There are additional markings like 'rit + dim' and 'pp' in this system.



# Teil ③

oder rasch (erregt)

subito (erregt/frei) -

breit

fff

(flamend...)

Pedal



*ritrato*

Cluster für Orchester  
pp

*Librato*

(ohne Flatterz.)  
breit  
Pedal bleibt  
Cluster  
mies schwächer

*lento* — *sehr langsam* (frei)

Zart  
pp  
lento  
ppp



Lento

Handwritten musical score for the first system. The top staff is in treble clef and contains three measures of music. The first measure is a whole rest. The second measure contains a half note G4 with a flat, a quarter note A4 with a flat, and a quarter note B4 with a flat. The third measure contains a half note C5 with a flat, a quarter note B4 with a flat, and a quarter note A4 with a flat. Dynamics include *pp* and *ff*. The grand staff below has a circled *pp = 4* and a *Pedal* marking. The left hand part consists of three measures of chords: G4-B4, G4-A4, and G4-B4.

Handwritten musical score for the second system. The top staff is in treble clef and contains three measures of music. The first measure is a whole note G4 with a flat. The second measure contains a half note A4 with a flat and a half note B4 with a flat. The third measure contains a half note C5 with a flat and a half note B4 with a flat. Dynamics include *f*, *ff*, and *p*. The grand staff below has a circled *p* and a circled *p*. The left hand part consists of three measures of chords: G4-B4, G4-A4, and G4-B4.

Handwritten musical score for the third system. The top staff is in treble clef and contains three measures of music. The first measure is a whole rest. The second measure contains a half note G4 with a flat, a quarter note A4 with a flat, a quarter note B4 with a flat, and a quarter note C5 with a flat. The third measure is a whole rest. Dynamics include *p*. The grand staff below has a circled *p* and a *Pedal* marking. The left hand part consists of three measures of chords: G4-B4, G4-A4, and G4-B4.



Handwritten musical score for the first system. It consists of three staves. The top staff has a treble clef and contains a melodic line with notes marked with accents and dynamics like *p*. The middle staff has a treble clef and contains a melodic line with notes marked with accents and dynamics like *p*. The bottom staff has a bass clef and contains a bass line with notes marked with accents and dynamics like *p*. The time signature is 8/8. Below the staves, the text "Sempere Pedal" is written.

Handwritten musical score for the second system. It consists of three staves. The top staff has a treble clef and contains a melodic line with notes marked with accents and dynamics like *pp*. The middle staff has a treble clef and contains a melodic line with notes marked with accents and dynamics like *pp*. The bottom staff has a bass clef and contains a bass line with notes marked with accents and dynamics like *pp*. The time signature is 8/8. Below the staves, the text "Cluster für Orchest." is written.

Handwritten musical score for the third system. It consists of three staves. The top staff has a treble clef and contains a melodic line with notes marked with accents and dynamics like *pp*. The middle staff has a treble clef and contains a melodic line with notes marked with accents and dynamics like *pp*. The bottom staff has a bass clef and contains a bass line with notes marked with accents and dynamics like *pp*. The time signature is 8/8. Below the staves, the text "Cluster" is written. The system concludes with the text "gr. fong" and "Lungus dicht Trills".



# Teil 4

terzo (d)

Handwritten musical score for the first system. It consists of two staves. The upper staff is in treble clef and contains several measures of music with notes, accidentals (sharps and naturals), and slurs. The lower staff is in bass clef and is labeled 'Pedal'. It contains notes and accidentals, with a dynamic marking 'ppp' and a 'crescendo' hairpin. The system is divided into four measures by vertical bar lines.

sang frei (Flüchtele - glücklich und leicht - viel Vibruato -)

Handwritten musical score for the second system. The upper staff is a vocal line with notes, slurs, and dynamic markings 'pp' and 'p'. The lower staff is a piano accompaniment section. It starts with a hatched box and the text 'dichtesten Cluster'. There are dynamic markings 'pp' and 'p' in circles. The system is divided into two measures by a vertical bar line.

Pedal bleibt

Handwritten musical score for the third system. It consists of two staves. The upper staff is in treble clef and contains notes, slurs, and dynamic markings 'p' and 'pp'. The lower staff is in bass clef and contains notes and accidentals, with a dynamic marking 'pp'. The system ends with a double bar line and a fermata. There are some additional markings at the bottom, including 'pp. sang' and a circled 'X'.



(♩) *Lento*

Handwritten musical score for piano. The right hand part shows a cluster of notes, with a circled '8' above it. The left hand part features a melodic line with a 'Pedal' marking and a circled '8' below it. A box labeled 'Cluster tief -' is present at the bottom right of the system.

Altflöte (ganz frei) mit viel Hall -

Handwritten musical score for alto flute. The notation includes a melodic line with various dynamics (p, f, p) and articulation marks (accents, slurs).

Handwritten musical score for alto flute. The notation includes a melodic line with a 'frei' marking and a circled '8' below it.

breit (appassionata)

Handwritten musical score for piano. The notation includes a melodic line with a 'Lento' marking and a circled '8' below it. A circled '8' is also present at the bottom right of the system.



sehr ruhig - frei)

Handwritten musical score for the first system. It consists of two staves: a treble clef staff and a bass clef staff. The treble staff contains several measures of music with notes, rests, and dynamic markings such as  $pp$  and  $ff$ . The bass staff contains notes, rests, and dynamic markings such as  $pp$  and  $ff$ . The word "Pedal" is written below the bass staff in three places, indicating pedal points. There are also some handwritten annotations like "4" and "8" near the bass staff.

Handwritten musical score for the second system. It consists of two staves: a treble clef staff and a bass clef staff. The treble staff contains several measures of music with notes, rests, and dynamic markings such as  $pp$ . The bass staff contains notes, rests, and dynamic markings such as  $pp$ . The word "Pedal" is written below the bass staff. There are also some handwritten annotations like "leicht und ganz frei" and "sehr rasch über Saiten streichen".

Handwritten musical score for the third system. It consists of two staves: a treble clef staff and a bass clef staff. The treble staff contains several measures of music with notes, rests, and dynamic markings such as  $pp$ . The bass staff contains notes, rests, and dynamic markings such as  $f$ ,  $ff$ , and  $fff$ . The word "Pedal" is written below the bass staff. There are also some handwritten annotations like "Clusten für Orchester" and "sehr ruhig".



Normalflöte -  
frei - rubato

ausklingen lassen  
bis pppp

G.P.



Flöte) sehr frei - ruhig - langsam (viel Vibrato) und Hall

(1)

pp

gr. Clustern  
(sehr dicht)

pp

p

pp

Largo - gestrichelt mit + dur

pp

ppp

Largo

Pedal



Teil ②

( 5 Teile — ( Teil 2 )

für einen Solisten

1978



# Teil ①

Lang frei

Normal Flöte

R.H.

L.H.

Pedal

Pedal

Prestissimo (legg.)

pp

pppp

Pedal

*frei*

*mp*

*Lunga*

*cluster*

*Pedal*

*pp*

*ad. lib.*

*pp*

*Pedal bleibt*

*ffp Lento*

*pp*

*ppp cluster für enchesten*

*pp*

*ppp*

*Lunga*

*pp*

*pp*



# Teil ②

sehr würdig (breit)

*ff*

Pedal

Cluster für  
orchestra

Pedal

über Paiten

G.P.

*sehr langsam (schwebend)*

Handwritten musical notation for the first system. It consists of a treble clef staff, a grand staff (treble and bass clefs), and a 'Pedal' section. The tempo is marked 'sehr langsam (schwebend)'. The notation includes various notes, rests, and dynamic markings such as 'pp'.

Handwritten musical notation for the second system. It consists of a treble clef staff, a grand staff (treble and bass clefs), and a 'Pedal' section. The notation includes various notes, rests, and dynamic markings such as 'pp'.

Handwritten musical notation for the third system. It consists of a treble clef staff, a grand staff (treble and bass clefs), and a 'Pedal' section. The tempo is marked 'Lento'. The notation includes various notes, rests, and dynamic markings such as 'ppp'. There are also some scribbles and a circled word 'Lento' in the right margin.



# Teil ②

Maestoso / oder frei breit

Handwritten musical score for the first system. It features a treble clef staff with a 4/8 time signature and a piano staff. The treble staff contains a melodic line with a slur and a crescendo hairpin, marked "cresc." and "breit". The piano staff contains a harmonic accompaniment with chords and slurs. Dynamics include "fff" and "ff".

Handwritten musical score for the second system, similar to the first. It features a treble clef staff with a 4/8 time signature and a piano staff. The treble staff contains a melodic line with a slur and a crescendo hairpin, marked "cresc." and "breit". The piano staff contains a harmonic accompaniment with chords and slurs. Dynamics include "fff" and "ff".

Handwritten musical score for the Flute (Solo) part. It features a treble clef staff with a melodic line. The score is marked "Flöte (Solo)" and "(d)". It includes a long slur with a crescendo hairpin, marked "18" above it. Dynamics include "pp", "ff", and "ppp". The word "Lunga" is written at the end.

sehr ruhig (Vibrato)

pp

Pedal

pp

Pedal

Flöte (frei) legg. (♩)

f

pp

gr. Gang

pp



# Teil ④

Prestissimo

Handwritten musical score for the first system. The system consists of two staves: a treble clef staff and a grand staff (treble and bass clefs). The treble staff contains a whole rest. The grand staff is in 2/4 time, with a tempo marking of 'Prestissimo' and a dynamic marking of 'ppp'. The bass line begins with a key signature of two sharps (F# and C#) and contains two quarter notes in the first measure, followed by rests. The first measure of the bass line has a circled 'P' above it. The second measure has a circled '4' above it. The third measure has a circled '1' above it. The fourth measure has a circled '1' above it. The fifth measure has a circled '1' above it. The sixth measure has a circled '1' above it. The seventh measure has a circled '1' above it. The eighth measure has a circled '1' above it. The system ends with a double bar line.

Handwritten musical score for the second system. The system consists of two staves: a treble clef staff and a grand staff (treble and bass clefs). The treble staff contains a whole rest. The grand staff is in 2/4 time, with a dynamic marking of 'pp'. The bass line begins with a key signature of one flat (Bb) and contains two quarter notes in the first measure, followed by rests. The first measure of the bass line has a circled 'P' above it. The second measure has a circled '1' above it. The third measure has a circled '1' above it. The fourth measure has a circled '1' above it. The fifth measure has a circled '1' above it. The sixth measure has a circled '1' above it. The seventh measure has a circled '1' above it. The eighth measure has a circled '1' above it. The system ends with a double bar line.

Handwritten musical score for the third system. The system consists of two staves: a treble clef staff and a grand staff (treble and bass clefs). The treble staff contains a whole rest. The grand staff is in 2/4 time, with a dynamic marking of 'p'. The bass line begins with a key signature of two sharps (F# and C#) and contains two quarter notes in the first measure, followed by rests. The first measure of the bass line has a circled 'P' above it. The second measure has a circled '4' above it. The third measure has a circled '1' above it. The fourth measure has a circled '1' above it. The fifth measure has a circled '1' above it. The sixth measure has a circled '1' above it. The seventh measure has a circled '1' above it. The eighth measure has a circled '1' above it. The system ends with a double bar line.

Handwritten musical notation for the first system. It consists of a treble clef staff and a bass clef staff. The treble staff contains several rests. The bass staff contains notes with accidentals (sharps and flats) and slurs. There are also some handwritten annotations above the notes.

Handwritten musical notation for the second system. It features a treble clef staff and a bass clef staff. The bass staff has notes with slurs and dynamic markings, including a prominent **ff** (fortissimo) marking. There are also some handwritten annotations above the notes.

Handwritten musical notation for the third system. It features a treble clef staff and a bass clef staff. Above the treble staff, there is a bracketed instruction: "Clustern für Orchester". Below this, there are dynamic markings **pp** and **ffff**. The bass staff contains notes with slurs and dynamic markings, including a prominent **ffff** (fortississimo) marking. There is also a handwritten "Pedal" marking at the bottom left.



*frei* *erweit-*

Cluster Tonband

*flüchtig* *erweit*

(flüchtig)

Handwritten musical score for the first system. It features three staves: a top staff with a treble clef and a middle staff with a bass clef. The music includes various notes, rests, and dynamic markings. A large bracket spans across the top staff with the word "flüchtig" written inside. The middle staff has a "Lento" marking and a "Pedal" marking. The bottom staff has a "Pedal" marking and a "verklungen lassen" marking with "ppp" below it. A box on the right side contains the letters "G. P.".

Prestissimo

Handwritten musical score for the second system, titled "Prestissimo". It features three staves: a top staff with a treble clef, a middle staff with a treble clef, and a bottom staff with a bass clef. The music is marked with "ppp" and includes a "Pedal" marking. The middle staff has a sequence of notes with accents and a "7" below them. The bottom staff has a "7" below it. The system is divided into seven measures, numbered 1 through 7 at the top.

legg. (frei)

drum   
 dicht   
 Trill.   
 Lunge

Handwritten musical score for the third system. It features three staves: a top staff with a treble clef, a middle staff with a treble clef, and a bottom staff with a bass clef. The music includes various notes, rests, and dynamic markings. A large bracket spans across the top staff with the word "legg. (frei)" written inside. The middle staff has a "pp" marking and a "7" below it. The bottom staff has a "7" below it. The system is divided into seven measures, numbered 1 through 7 at the top.

pr. lang



# Teil 5

ganz frei (schl. -) Altflöte - sanftig motivisch  
viel Hall - -

Handwritten musical score for the first system. It consists of three staves. The top staff is for the flute, starting with a whole rest followed by a melodic line: p = G4, A4, B4, C5, B4, A4, G4. The middle staff is for the right hand piano, with notes G4, A4, B4, C5, B4, A4, G4. The bottom staff is for the left hand piano, with notes G4, A4, B4, C5, B4, A4, G4. A circled 'Pedal' marking is present in the bottom staff. The piece ends with a double bar line and a fermata.

Handwritten musical score for the second system. It consists of three staves. The top staff is for the flute, starting with a whole rest followed by a melodic line: p = G4, A4, B4, C5, B4, A4, G4. The middle staff is for the right hand piano, with notes G4, A4, B4, C5, B4, A4, G4. The bottom staff is for the left hand piano, with notes G4, A4, B4, C5, B4, A4, G4. A circled 'Pedal' marking is present in the bottom staff. The piece ends with a double bar line and a fermata.

Handwritten musical score for the first system. The top staff is in treble clef and contains a melodic line with various dynamics including  $f$  and  $pp$ . It features accents, slurs, and a circled  $\oplus$  symbol. The bottom two staves are a grand staff with piano accompaniment.

Handwritten musical score for the second system. The top staff is in treble clef and includes the instruction "ganz frei". It contains dynamics like  $pp$  and  $ppp$ , along with slurs and accents. The bottom two staves are a grand staff; the left hand part includes a section labeled "Pedal" with a hatched texture.

Handwritten musical score for the third system. The top staff is in treble clef and includes the instruction "frei". It contains dynamics like  $pp$  and  $ppp$ , along with slurs, accents, and a "Vibrato" marking. The bottom two staves are a grand staff with piano accompaniment.



religioso Flöte -

Lento

cluster (Tonband)

pp

pp

frei

vibrato

pp

7

gr. lang

pp

P

G.P.



mit größtem Hall)

Alt-Flöte - Solo (Vibrato) -

Handwritten musical notation for the first system, featuring a treble clef, a key signature of one flat, and dynamic markings pp and f. The notation includes a series of notes with slurs and accents, ending with a fermata.

Handwritten musical notation for the second system, featuring a treble clef, a key signature of one flat, and dynamic markings p and f. The notation includes a series of notes with slurs and accents.

Handwritten musical notation for the third system, featuring a treble clef, a key signature of one flat, and dynamic markings f. The notation includes a series of notes with slurs and accents.

RUHIG Lento (Vibrato)

Handwritten musical notation for the fourth system, featuring a treble clef, a key signature of one sharp, and dynamic markings p. The notation includes a series of notes with slurs and accents, and a measure number 16.

Handwritten musical notation for the fifth system, featuring a treble clef, a key signature of one sharp, and dynamic markings legg. and ppp. The notation includes a series of notes with slurs and accents, and a measure number 16.

3. Teil —

Solo für einen Solisten —  
der auch das Klavierpart  
spielt.

1978.

Adolf Scherbaum

(6 Teile) — Variationen!)



sehr

# Teil ①

frei (ruhig) viel Vibrato

④

poco rit -

*f*

*f*

Presto (protesk)

Flöte

$\frac{3}{4}$

*p*

*f*

*qu.*

*p*

D.C. al Fine



Teil 2

frei - rubato Flöte -

6/4 pp <

frei - rubato

frei - rubato - mit -

p =

Pedal

sehr rubatistisch

p =

Pedal

breit

mit größtem Ausdruck —

ff

schr. ruhig —

viel —

trianta

pp

Pedal

pp

schwebend

pp

ppp

Lunga



sehr energisch

# Teil ③

hektische (frei-rubato) ③

Handwritten musical score for the first system. The top staff is in treble clef and contains a series of chords and notes with accents (^) and slurs. The bottom staff is in bass clef and includes a 'Pedal' section with a hatched rectangular area. Dynamic markings include *ff* and *sf*. The text '(Flatterzunge -)' is written below the first staff.

Handwritten musical score for the second system. The top staff is in treble clef and shows a melodic line with slurs and accents. The bottom staff is in bass clef and features a wavy line representing a tremolo or similar effect. The text '(frei)' is written above the first staff, and 'ohne Flatterzunge' is written below it.

Handwritten musical score for the third system. The top staff is in treble clef and contains a melodic line with slurs and accents. The bottom staff is in bass clef and includes a wavy line labeled 'Streich' (strings). The text '(frei-rubato -)' is written above the first staff.

erregt bewegt

Handwritten musical score for the first system. The top staff (treble clef) contains several notes with accidentals (flats and sharps) and slurs. The bottom staff (bass clef) contains notes with stems and slurs. A dynamic marking "hart!" is written in the middle. Above the first staff, there is a large bracket and the word "erregt bewegt".

Handwritten musical score for the second system. The top staff (treble clef) has notes with accidentals and slurs, with the marking "(frei)" above. The bottom staff (bass clef) has notes with stems and slurs. A dynamic marking "pp" is present, along with a triplet of notes and the marking "legg.". There are also some scribbled-out notes in the bottom staff.

Handwritten musical score for the third system. The top staff (treble clef) has notes with accidentals and slurs, with the marking "rubato (frei)" above. The bottom staff (bass clef) has notes with stems and slurs, with the marking "Pedal" below. There are also markings "Conga" and "flamend". A circled "ff" is written below the bottom staff. The system ends with a double bar line and a wavy line.



# Teil (4)

(bei D.c.)

con sord.) Cluster <sup>(4)</sup> ppp - sempre - bis Schlüss - von ev. Orchester)

Preziosissimo

Flöte Solo -

(mit sehr stark Hall - schwebend)

ppp <math>\langle</math>  
schwache  
Steigerung

(2ter ab hier Flatterzunge - bis  $\Phi$ )

Handwritten musical notation on a single staff. It features a series of chords with various accidentals (flats and sharps) and dynamic markings. The text "wieder normal" is written below the staff.

Handwritten musical notation on a single staff. It includes a 4/4 time signature and dynamic markings such as *pp*, *ppp*, and *ff*. The text "sempre din / immer schwächer / bis ppp" is written above the staff, and "mit viel Hall - schwebend..." is written below it.

Handwritten musical notation on a single staff, consisting of a wavy line representing a melodic or vibrato line. It includes dynamic markings like *p*, *ff*, and *dim*. The text "flimmernd" with an arrow is written below the staff.

Handwritten musical notation on a single staff, featuring a wavy line. It includes dynamic markings like *p* and *>*.

D.C.

Handwritten musical notation on a single staff, showing a sequence of notes with various accidentals and dynamic markings like *pp* and *>*.

Handwritten musical notation on a single staff, showing a sequence of notes with dynamic markings like *ppp* and *pppp*. The notes are numbered 1 through 7.



# Teil 5

Ad lib (langsam)

5

Handwritten musical score for the first system of 'Teil 5'. It features a treble clef staff with a melodic line starting on a whole note C4, followed by a series of eighth notes: D4, E4, F4, G4, A4, B4, C5, B4, A4, G4, F4, E4, D4. The piano part consists of chords: C4-E4-G4, C4-E4-G4, and C4-E4-G4. A 'Pedal' section is indicated with a circled 'P' and a downward arrow. The system ends with a double bar line and a circled fermata symbol.

Handwritten musical score for the second system of 'Teil 5'. The treble clef staff continues the melodic line with eighth notes: C5, B4, A4, G4, F4, E4, D4, C4, B3, A3, G3, F3, E3, D3. The piano part continues with chords: C4-E4-G4, C4-E4-G4, and C4-E4-G4. A 'Pedal' section is indicated with a circled 'P' and a downward arrow. The system ends with a double bar line and a circled fermata symbol.

Handwritten musical score for the third system of 'Teil 5'. The treble clef staff continues the melodic line with eighth notes: C3, B2, A2, G2, F2, E2, D2, C2, B1, A1, G1, F1, E1, D1. The piano part continues with chords: C4-E4-G4, C4-E4-G4, and C4-E4-G4. A 'Pedal' section is indicated with a circled 'P' and a downward arrow. The system ends with a double bar line, a circled fermata symbol, and a box containing the word 'lunga' and a vertical line with 'FIN' written vertically.

Lento (♩) sehr schwebend - sehr langsam

(mit sehr viel Hall)

pp

Pedal ganz

Cluster - Tonbund

(ganz frei) über Saiten!

p

Lunga

D. C. al F. in

Pedal



# Teil ⑥

⑥

lang frei)

Handwritten musical notation for the first system. The top staff is in treble clef and contains a melodic line with various accidentals and dynamics. The bottom staff is in piano clef and contains a cluster of notes, indicated by a large shaded rectangular area. Dynamics include *fff*.

Handwritten musical notation for the second system. The top staff is in treble clef and contains a melodic line with various accidentals and dynamics. The bottom staff is in piano clef and contains a cluster of notes, indicated by a large shaded rectangular area. Dynamics include *fff*.

Pedal (weisen Cluster)

Handwritten musical notation for the third system. The top staff is in treble clef and contains a melodic line with various accidentals and dynamics. The bottom staff is in piano clef and contains a cluster of notes, indicated by a large shaded rectangular area. Dynamics include *fff*.

Handwritten musical notation for the fourth system. The top staff is in treble clef and contains a melodic line with various accidentals and dynamics. The bottom staff is in piano clef and contains a cluster of notes, indicated by a large shaded rectangular area. Dynamics include *fff*.

Lento

1

Handwritten musical notation for the fifth system. The top staff is in treble clef and contains a melodic line with various accidentals and dynamics. The bottom staff is in piano clef and contains a cluster of notes, indicated by a large shaded rectangular area. Dynamics include *fff*. The system concludes with a double bar line and a circled *rit.* marking.

*Prestissimo* —

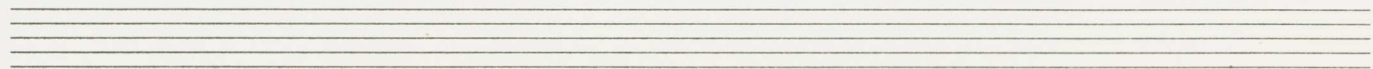
Handwritten musical score for the first system. The piano staff (top) contains a circled 'G.P.' in a box, followed by a circled whole note, and then a series of sixteenth notes with an accent (^). The bass staff (bottom) contains a circled whole note, followed by a circled whole note with 'ppp' written above it, and then a series of sixteenth notes with an accent (^). A bracket under the piano staff is labeled 'crescendo bis fpp'. A large slur covers the piano staff from the circled whole note to the end of the system. Below the piano staff, the text 'Pedal sempre' is written with a horizontal line underneath it.

Handwritten musical score for the second system. The piano staff (top) contains a circled whole note with an accent (^), followed by sixteenth notes with an accent (^). The bass staff (bottom) contains sixteenth notes with an accent (^). A large slur covers the piano staff from the circled whole note to the end of the system.

Cluster - Tonband } pp < (P)

Handwritten musical score for the third system. The piano staff (top) contains sixteenth notes with an accent (^) and a circled 'P' with an accent (^). The bass staff (bottom) contains sixteenth notes with an accent (^). A large slur covers the piano staff from the circled 'P' to the end of the system. A bracket above the piano staff is labeled 'Cluster - Tonband' with 'pp <' and '(P)' written below it.





(zirka (1-2 Minuten))

flümmend

frei - einsetzen - (mit viel Vibrato) Flag.

Handwritten musical notation for the first system. It consists of two staves. The upper staff is in treble clef and contains notes with various accidentals (sharps, flats, naturals) and slurs. The lower staff is in bass clef and contains notes with accidentals and slurs. Dynamic markings include 'pp' and '>'. There are also some scribbled-out notes at the beginning of the system.

mit viel Hall (breit)

Handwritten musical notation for the second system. It consists of two staves. The upper staff is in treble clef and contains notes with slurs and dynamic markings like 'ff'. The lower staff is in bass clef and contains notes with slurs and dynamic markings like 'f'. There are also some scribbled-out notes at the beginning of the system.

(großes mit f din)

Handwritten musical notation for the third system. It consists of two staves. The upper staff is in treble clef and contains notes with slurs and dynamic markings like 'pp'. The lower staff is in bass clef and contains notes with slurs and dynamic markings like 'p'. There is a box on the right side containing the text 'G. P.' and some scribbled-out notes at the end of the system.



mit größter Ruhe) - Ausrufung - (ganz frei) -  
 (wie ein Choral) -

Handwritten musical notation for the first system. It consists of two staves. The upper staff is in treble clef and contains several notes with accents (^) and slurs. The lower staff is in bass clef and contains notes with accents (^) and slurs. A circled 'pp' (pianissimo) dynamic marking is present in the lower staff. The system concludes with a double bar line.

(Pedal —)

(ganz frei)

Handwritten musical notation for the second system. It consists of two staves. The upper staff has notes with accents (^) and slurs. The lower staff has notes with accents (^) and slurs. A circled 'f' (forte) dynamic marking is present in the lower staff. The system concludes with a double bar line.

Handwritten musical notation for the third system. It consists of two staves. The upper staff has notes with accents (^) and slurs. The lower staff has notes with accents (^) and slurs. A circled 'pp' (pianissimo) dynamic marking is present in the lower staff. The system concludes with a double bar line.