

*Ursus*

# Notenheft

---



Ped. ein Pedal aus

# Fantasie für Klavier

1979.

(Marsch funebre)

Lento

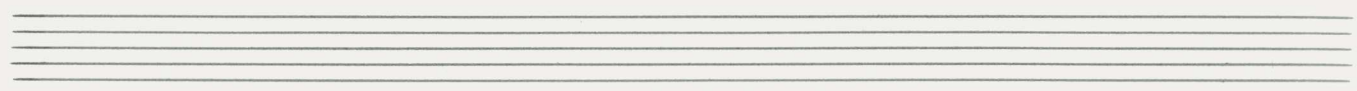
Handwritten musical notation for the first system. It consists of two staves. The upper staff is in treble clef with a common time signature (C) and a dynamic marking of *pp*. It contains four measures of music with notes and rests, and includes markings for *pp* and accents. The lower staff is in bass clef and contains four measures of chords, with markings for *pp* and accents. Pedal markings are present: a double-headed arrow between the first and second measures, and a right-pointing arrow above the second measure.

Handwritten musical notation for the second system. It consists of two staves. The upper staff is in treble clef and contains four measures of music with notes and rests, including an upward-pointing arrow above the first measure and the word "vorwärts" with a right-pointing arrow above the second measure. The lower staff is in bass clef and contains four measures of chords, with markings for *pp* and accents. Pedal markings are present: a double-headed arrow between the first and second measures, and a right-pointing arrow above the second measure.

Handwritten musical notation for the third system. It consists of two staves. The upper staff is in treble clef and contains four measures of music with notes and rests, including an upward-pointing arrow above the first measure and the word "zurück" above the second measure. The lower staff is in bass clef and contains four measures of chords, with markings for *pp* and accents. Pedal markings are present: a double-headed arrow between the first and second measures, and a right-pointing arrow above the second measure.

N.B. | Zum Gedenken an eines meiner traurigsten Kapitel meines Lebens) 1979. A. Scherbaum

MUSIKSAMMLUNG  
ÖSTERR.  
NATIONALBIBLIOTHEK



pesante (aber nicht schleppend)

Handwritten musical notation for the first system. It consists of two staves. The upper staff is in treble clef and contains several chords and melodic fragments. The lower staff is in bass clef and contains corresponding chords and bass lines. A circled sharp symbol (#) is present in the lower staff. A large bracket spans across the end of the system.

Handwritten musical notation for the second system. It consists of two staves. The upper staff is in treble clef and contains several chords and melodic fragments. The lower staff is in bass clef and contains corresponding chords and bass lines. A circled sharp symbol (#) is present in the lower staff. A large bracket spans across the end of the system.

Handwritten musical notation for the third system. It consists of two staves. The upper staff is in treble clef and contains several chords and melodic fragments. The lower staff is in bass clef and contains corresponding chords and bass lines. A circled sharp symbol (#) is present in the lower staff. A large bracket spans across the end of the system.

*breit (rit)*

Handwritten musical score for the first system. It consists of three staves. The top staff has a wide interval marked with a brace and the instruction "breit (rit)". The middle staff contains a melodic line with various accidentals and dynamics. The bottom staff has a bass line with a circled chord and the instruction "ritato! — frei".

*erregt (bewegt)*

Handwritten musical score for the second system. It consists of two staves. The top staff is in 4/4 time and features a forte dynamic marking. The bottom staff has a bass line with a circled chord and the instruction "erregt (bewegt)".

Handwritten musical score for the third system. It consists of two staves. The top staff has a circled chord and the instruction "erregt (bewegt)". The bottom staff has a bass line with a circled chord and the instruction "erregt (bewegt)".

sehr erregt —

Handwritten musical notation for the first system. It consists of two staves: a treble clef staff and a bass clef staff. The treble staff begins with a treble clef, a key signature of one flat (B-flat), and a common time signature (C). The first measure contains a triplet of eighth notes: B-flat, A, and G. The second measure contains a quarter note B-flat, followed by a quarter note A, and a quarter note G. The third measure contains a quarter note B-flat, followed by a quarter note A, and a quarter note G. The fourth measure contains a quarter note B-flat, followed by a quarter note A, and a quarter note G. The system ends with a double bar line and a fermata over the final note.

Handwritten musical notation for the second system. It consists of two staves: a treble clef staff and a bass clef staff. The treble staff begins with a treble clef, a key signature of one flat (B-flat), and a common time signature (C). The first measure contains a quarter note B-flat, followed by a quarter note A, and a quarter note G. The second measure contains a quarter note B-flat, followed by a quarter note A, and a quarter note G. The third measure contains a quarter note B-flat, followed by a quarter note A, and a quarter note G. The fourth measure contains a quarter note B-flat, followed by a quarter note A, and a quarter note G. The system ends with a double bar line and a fermata over the final note.

Handwritten musical notation for the third system. It consists of two staves: a treble clef staff and a bass clef staff. The treble staff begins with a treble clef, a key signature of one flat (B-flat), and a common time signature (C). The first measure contains a quarter note B-flat, followed by a quarter note A, and a quarter note G. The second measure contains a quarter note B-flat, followed by a quarter note A, and a quarter note G. The third measure contains a quarter note B-flat, followed by a quarter note A, and a quarter note G. The fourth measure contains a quarter note B-flat, followed by a quarter note A, and a quarter note G. The system ends with a double bar line and a fermata over the final note.

Handwritten musical notation for the first system, featuring a treble clef and a bass clef. The treble staff contains a melodic line with eighth notes and slurs, and the bass staff contains a bass line with chords and accidentals.

Handwritten musical notation for the second system, continuing the melodic and bass lines from the first system.

Handwritten musical notation for the third system, showing further development of the musical themes.

Handwritten musical notation for the fourth system, including dynamic markings like "pp", "f", and "ff".

mit größter Wucht und Leidenschaft.)

Handwritten musical notation for the first system. It features a grand staff with treble and bass clefs. The music is marked with a forte (*ff*) dynamic and includes a 'Pedal' instruction. The notation is highlighted in green. The first staff has a treble clef and contains two chords:  $b^{\flat} \sharp b^{\flat}$  and  $\sharp \sharp$ . The second staff has a bass clef and contains two chords:  $b^{\flat} \sharp \sharp$  and  $\sharp \sharp$ . There are also melodic lines with accents in both staves.

Handwritten musical notation for the second system. It features a grand staff with treble and bass clefs. The music is highlighted in green. The first staff has a treble clef and contains two chords:  $\sharp \sharp$  and  $\sharp \sharp$ . The second staff has a bass clef and contains two chords:  $\sharp \sharp$  and  $\sharp \sharp$ . There are also melodic lines with accents in both staves.

Handwritten musical notation for the third system. It features a grand staff with treble and bass clefs. The music is highlighted in green. The first staff has a treble clef and contains two chords:  $b^{\flat} \sharp b^{\flat} \sharp$  and  $\sharp \sharp \sharp$ . The second staff has a bass clef and contains two chords:  $\sharp \sharp$  and  $\sharp \sharp$ . There are also melodic lines with accents in both staves.

Handwritten musical notation for the fourth system. It features a grand staff with treble and bass clefs. The music is highlighted in green. The first staff has a treble clef and contains two chords:  $\sharp \sharp \sharp$  and  $\sharp \sharp \sharp$ . The second staff has a bass clef and contains two chords:  $\sharp \sharp$  and  $\sharp \sharp$ . There are also melodic lines with accents in both staves.

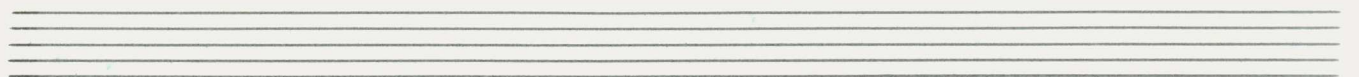
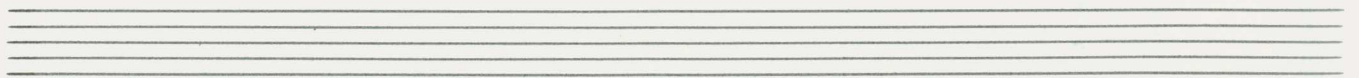
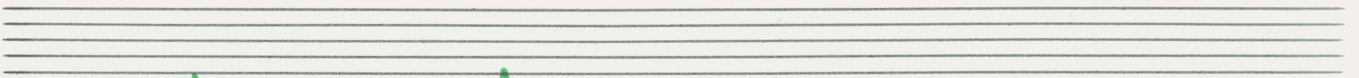
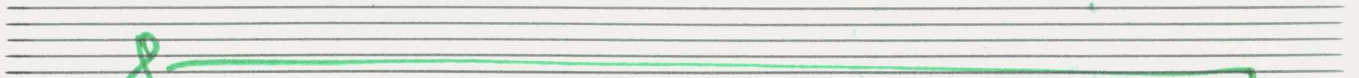
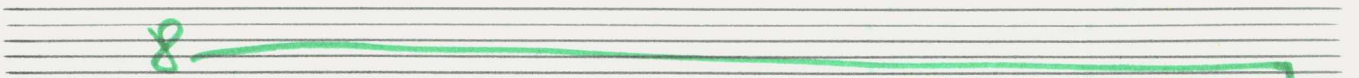
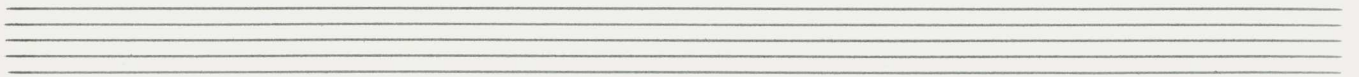
Handwritten musical notation for the first system. It consists of two staves: a treble clef on top and a bass clef on the bottom. A green bracket spans across both staves, indicating a single melodic line. The notation includes a fermata over the first measure, followed by two measures of chords, and two final measures with fermatas.

Handwritten musical notation for the second system. It consists of two staves: a treble clef on top and a bass clef on the bottom. A green bracket spans across both staves, indicating a single melodic line. The notation includes a fermata over the first measure, followed by two measures of chords, and two final measures with fermatas.

Handwritten musical notation for the third system. It consists of two staves: a treble clef on top and a bass clef on the bottom. A green bracket spans across both staves, indicating a single melodic line. The notation includes a fermata over the first measure, followed by two measures of chords, and two final measures with fermatas.

Handwritten musical notation for the fourth system. It consists of two staves: a treble clef on top and a bass clef on the bottom. A green bracket spans across both staves, indicating a single melodic line. The notation includes a fermata over the first measure, followed by two measures of chords, and two final measures with fermatas.





Handwritten musical notation on a grand staff. The upper staff contains two chords with sharp signs. The lower staff contains a melodic line with sharp signs and a slur.

Handwritten musical notation on a grand staff. The upper staff has a circled chord with three sharps and a scribbled-out section. The lower staff has a chord with two flats and a melodic line with slurs.

Handwritten musical notation on a grand staff. The upper staff has a chord with one flat and a melodic line with slurs. The lower staff has a chord with one flat and a melodic line with slurs.

Handwritten musical notation on a grand staff. The upper staff has a circled chord with one sharp and a melodic line with slurs. The lower staff has a chord with one flat and a melodic line with slurs.



Andante (wesentlich langsamer) ständige Steigerung)

(accel. →)

bewegt (— accel. →)

(schw. bewegt - bewegt)

Handwritten musical notation for the first system. It consists of two staves. The top staff is in treble clef and the bottom staff is in bass clef. The time signature is 4/4. The first measure shows a treble clef with a circled key signature of three sharps (F#, C#, G#) and a bass clef with a flat (Bb). The second measure has a treble clef with notes Bb, E, and G# marked with accents, and a bass clef with a flat (Bb). The third measure has a treble clef with notes Bb, E, and G# and a bass clef with a flat (Bb). The system ends with a double bar line.

Handwritten musical notation for the second system. It consists of two staves. The top staff is in treble clef and the bottom staff is in bass clef. The first measure has a treble clef with notes Bb and E, and a bass clef with a flat (Bb). The second measure has a treble clef with notes Bb and E, and a bass clef with a flat (Bb). The third measure has a treble clef with notes Bb and E, and a bass clef with a sharp (F#). The system ends with a double bar line.

Handwritten musical notation for the third system. It consists of two staves. The top staff is in treble clef and the bottom staff is in bass clef. The first measure has a treble clef with notes F# and C#, and a bass clef with notes F# and C#. The second measure has a treble clef with notes F# and C#, and a bass clef with notes F# and C#. The third measure has a treble clef with notes F# and C#, and a bass clef with notes F# and C#. The fourth measure has a treble clef with notes Bb and E, and a bass clef with notes Bb and E. The fifth measure has a treble clef with notes Bb and E, and a bass clef with notes Bb and E. The system ends with a double bar line.

Handwritten musical notation for the fourth system. It consists of two staves. The top staff is in treble clef and the bottom staff is in bass clef. The system is marked with a large, sweeping melodic line that spans across both staves. The word "fliss." is written above the first measure, and "Ped." is written below the first measure. The system ends with a double bar line.

1.

2. *Lento* | *wuchtig* *Zeit*-----

*sehr breit*

# Prestissimo

Handwritten musical notation for the first system. The piece is in common time (C) and begins with a piano (*ppp*) dynamic, followed by a crescendo (*cresc.*). The right hand features a melodic line with a dotted quarter note and an eighth note, while the left hand provides a bass line with a dotted quarter note and an eighth note. The system concludes with a double bar line.

Handwritten musical notation for the second system. The right hand continues the melodic line with a dotted quarter note and an eighth note. The left hand maintains the bass line with a dotted quarter note and an eighth note. The system concludes with a double bar line.

Handwritten musical notation for the third system. The right hand features a melodic line with a dotted quarter note and an eighth note. The left hand provides a bass line with a dotted quarter note and an eighth note. The system concludes with a double bar line.

Handwritten musical notation for the fourth system. The right hand features a melodic line with a dotted quarter note and an eighth note. The left hand provides a bass line with a dotted quarter note and an eighth note. The system concludes with a double bar line and a final flourish.

leidenschaftlich

Handwritten musical score for piano, consisting of four systems of staves. The notation is in green ink and includes various musical symbols such as notes, rests, accidentals, and dynamic markings. The first system has a treble clef and a circled key signature symbol. The second system has a treble clef. The third system has a treble clef and a circled key signature symbol. The fourth system has a bass clef and a circled key signature symbol. The word "leidenschaftlich" is written at the top. The word "Cluster" is written in the fourth system. Dynamic markings include "pp" and "f". There are also some handwritten annotations and markings above the notes.



Handwritten musical notation on two staves. The top staff begins with a treble clef and a key signature of two flats (B-flat and E-flat). It features a series of notes with accidentals, including a triplet of notes. The bottom staff begins with a bass clef and a key signature of two flats. It contains similar melodic lines with accidentals. The system concludes with a double bar line and repeat signs.

Handwritten musical notation on two staves. The top staff is marked "breit" and "Lungu Prestissimo". It features a treble clef and a key signature of two flats. The bottom staff is marked "8" and also has a key signature of two flats. The notation includes complex rhythmic patterns and accidentals, with a double bar line and repeat signs at the end.

Handwritten musical notation on two staves. The top staff features a treble clef and a key signature of two flats, with notes and accidentals. The bottom staff features a bass clef and a key signature of two flats, with notes and accidentals. The system ends with a double bar line and repeat signs.

Handwritten musical notation on two staves. The top staff is marked "(poco rit) (breit)" and features a treble clef with notes and accidentals. The bottom staff is marked "Lungu" and features a bass clef with notes and accidentals. To the right of the staves, there is a signature: "Fina 1949 Adolf Scherbaum".