

L.v. BEETHOVEN



W.A. MOZART



NOTENHEFT

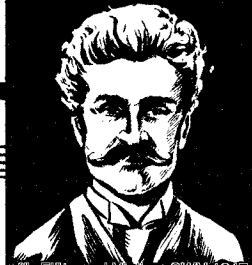
F. SCHUBERT



J. HAYDN



J. STRAUSS



Duo für Flöte
u. Violine

SCHERBAUM ADOLF
LINZ RÖMERSSTR. 18
KOMPOSIST

1

1

rubato (fres.)

breit

Flöte
Solo
Violine

Handwritten musical score for the first system. The Flute staff (top) begins with a rest, followed by notes with slurs and accents. The Violin staff (bottom) starts with a rest, then plays a rhythmic pattern of eighth notes. Dynamic markings include *ff* and *p*. The time signature is 4/8.

Handwritten musical score for the second system. The Flute staff continues with melodic lines and slurs. The Violin staff provides harmonic support with chords and moving lines. Dynamics range from *fp* to *pp*. The time signature remains 4/8.

Handwritten musical score for the third system. The Flute staff features more complex phrasing with slurs and accents. The Violin staff continues with rhythmic accompaniment. Dynamics include *ff* and *p*. The time signature is 4/8.

Handwritten musical score for the fourth system. The Flute staff concludes with a final melodic phrase. The Violin staff ends with a series of chords. Dynamics include *mp*, *fp*, and *pp*. The time signature is 4/8.

2

2

Duo für Flöte
æ Violine

Handwritten musical score for the first system. The upper staff (Flute) begins with a *rubato* marking and a *ff* dynamic. The lower staff (Violin) starts with a *pizz* (pizzicato) marking and an *arco* (arco) marking. The key signature is one flat (B-flat) and the time signature is 3/8. The system concludes with a *pp* dynamic marking.

Handwritten musical score for the second system. Both staves feature *rubato* markings. The upper staff has a *ff* dynamic. The lower staff begins with a *pp* dynamic. The system ends with a *pp* dynamic marking.

Handwritten musical score for the third system. The upper staff is marked *frei accel.* (ad libitum, accelerating) and starts with a *pp* dynamic, moving through *f* and *ff*. The lower staff starts with a *ffp* dynamic. The system concludes with a *ffp* dynamic marking.

Handwritten musical score for the fourth system. The upper staff is marked *breit* (broad) and *ff*. The lower staff starts with a *ff* dynamic and includes a *frei* (ad libitum) marking. The system ends with a *pizz* (pizzicato) marking and a *hant* (hand) marking.

Duo für Flöte

Violine

3

3

Presto

erect

Presto

Prestissimo

Handwritten musical score for the first system. The top staff contains a series of rhythmic patterns, possibly triplets, with dynamic markings *f* and *ff*. The bottom staff includes a *pizz* marking and a *arco* marking. The music is written in a common time signature.

Handwritten musical score for the second system. It includes performance directions: *frei*, *Lento*, and *Flutter 3*. The top staff features a melodic line with *pp* dynamics. The bottom staff has a *pizz* marking and a *ff* dynamic. The system concludes with a double bar line.

Handwritten musical score for the third system. It features the direction *Flutter 3*. The top staff has a melodic line with *pp* dynamics. The bottom staff starts with a *ffpp* dynamic and includes a *1^a* marking. The system ends with a double bar line.

Handwritten musical score for the fourth system. It begins with the direction *Lento*. The top staff has a melodic line with *pp* dynamics. The bottom staff has a *ppp* dynamic. The system concludes with a *Fine* marking and a double bar line.

Duo für Flöte
Violine

4 (4)

frei rubato

Handwritten musical score for the first system. The flute staff contains a wavy line with a flat sign and the word "VIBR.". The piano staff has a treble clef and a key signature of one flat. It features a series of chords and dynamics including *fff*, *arco*, and *ff*. There are also some numerical markings like "40" and "30".

Handwritten musical score for the second system. The flute staff has several notes with accents and slurs. The piano staff features a long horizontal line with a key signature change to two flats and dynamics ranging from *fff* to *pp*.

Handwritten musical score for the third system. It begins with the marking "lento" and "rubato". The flute staff has notes with slurs and accents. The piano staff has a treble clef and a key signature of two flats, with dynamics including *ff* and *pp*.

Handwritten musical score for the fourth system. The piano staff includes a keyboard diagram showing a sequence of notes. Dynamics include *pp*, *ff*, and *pp*. The flute staff has notes with accents.

5

Duo für Flöte

Violine

Presto

5

Handwritten musical score for the first system. The flute part (top staff) begins with a circled '5' above the first measure. The piano accompaniment (bottom staff) features a series of chords. The tempo is marked 'Presto'.

Handwritten musical score for the second system. The flute part continues with melodic lines and rests. The piano accompaniment consists of dense chordal textures.

Handwritten musical score for the third system. The flute part has more melodic movement, and the piano accompaniment continues with complex chordal patterns.

Handwritten musical score for the fourth system. The flute part ends with a double bar line. The piano accompaniment concludes with a time signature change to 2/4, indicated by a '2' over a '4'. The system ends with a double bar line.

Handwritten musical score for the first system. The treble clef staff contains a melodic line with notes, rests, and slurs. The bass clef staff contains a bass line with notes and rests. The word "haut" is written below the bass clef staff.

Handwritten musical score for the second system. The treble clef staff continues the melodic line with notes and slurs. The bass clef staff continues the bass line with notes and rests.

Handwritten musical score for the third system. The treble clef staff shows a melodic line with notes and slurs. The bass clef staff shows a bass line with notes and rests.

Handwritten musical score for the fourth system. The treble clef staff includes dynamic markings such as "pp" and "p". The bass clef staff includes dynamic markings such as "pp" and "p".

Handwritten musical notation for the first system, featuring a treble clef staff with a melodic line and a bass clef staff with accompaniment. The treble staff includes notes with accidentals (sharps, flats, double sharps) and a dynamic marking 'f'. The bass staff includes a circled 'f' and various chordal structures.

Handwritten musical notation for the second system, showing a treble clef staff with a melodic line and a bass clef staff with a rhythmic accompaniment of eighth notes. The treble staff has a dynamic marking 'f' and various accidentals. The bass staff has accents (^) above the notes.

Handwritten musical notation for the third system, featuring a treble clef staff with a melodic line and a bass clef staff with a rhythmic accompaniment of eighth notes. The treble staff has a dynamic marking 'f' and various accidentals. The bass staff has accents (^) above the notes.

Handwritten musical notation for the fourth system, featuring a treble clef staff with a melodic line and a bass clef staff with a rhythmic accompaniment of eighth notes. The treble staff has a dynamic marking 'f' and various accidentals. The bass staff has accents (^) above the notes.

6

6

Duo für Flöte

Violine

Lento (sehr ruhig)
VIBR.

mp # d — b b b

fp

cow
sord. # # # # # # # # # #

pp

dicht Trem.

b

fp

b

ppp

b

poco rit)

frei

pp f ff

frei

pp

rit. dim.

p

D.C. al fine

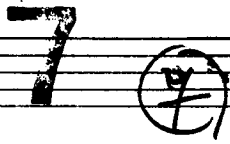
Lento

pp ppp

Duo für Flöte

u. Violine

Tanz MAKABER



Presto (3+) ad. lib. (am Piccolo)

ff Lebens Blume blühet schön wenn sie der

ff pizz (quotesk -

Morgen - - - -

4 (Flutter 3)

arco

777

Nov. 1979

Adolf Scherbaum