

No. 1

Improvisation über

(Oh - Heiland, reiß die Himmel auf...)

1880
Adolf Scherker
für Orgel solo

Im Gedächtnis an meinem
allerliebsten und gütigsten
Vater
(der im April 1880 plötzlich
gestorben ist.)

Adolf Scherker

~~best~~ (aber nicht: Adleppant)

O
R
G
E
L

Handwritten musical notation on a grand staff. The right hand (treble clef) contains a melodic line with notes and accidentals (sharps and flats). The left hand (bass clef) contains a bass line with notes and a 'bd.' marking.

Handwritten musical notation on a grand staff. The right hand (treble clef) features a melodic line with a slur and a '3 4 1' marking. The left hand (bass clef) has a bass line with notes and a 'bd.' marking.

Handwritten musical notation on a grand staff. The right hand (treble clef) has a melodic line with a slur and a '3 4' marking. The left hand (bass clef) has a bass line with notes and a 'bd.' marking.

Handwritten musical notation on a grand staff. The right hand (treble clef) has a melodic line with a slur and a '3 4' marking. The left hand (bass clef) has a bass line with notes and a '(6)' marking.

(rit.)

breit

(rit.)

frei subito

subito

accel... →

apc

(ang 2) accel.

Handwritten musical notation for the first system, consisting of two staves. The upper staff contains three measures of chords, each with a slur and a '37' fingering. The lower staff contains a bass line with three measures of notes, also with a '37' fingering. The notes in the bass line are G, A, B, C, D, E, F, G.

(rit) *rit. brech*

Handwritten musical notation for the second system. It begins with a 'rit.' marking and the text 'rit. brech'. The system consists of two staves. The upper staff has two measures of chords with slurs and '37' fingerings. The lower staff has two measures of notes with slurs and '37' fingerings. The notes in the bass line are G, A, B, C, D, E, F, G.

Handwritten musical notation for the third system, consisting of two staves. The upper staff has two measures of chords with slurs and '37' fingerings. The lower staff has two measures of notes with slurs and '37' fingerings. The notes in the bass line are G, A, B, C, D, E, F, G.

(rit)

Handwritten musical notation for the fourth system, consisting of two staves. It begins with a 'rit.' marking. The system consists of two staves. The upper staff has two measures of chords with slurs and '37' fingerings. The lower staff has two measures of notes with slurs and '37' fingerings. The notes in the bass line are G, A, B, C, D, E, F, G.

trough

pp

p

G.P.

aha larpoume $\frac{4}{4}$

pp

p

p

pp

b

ba

p

pp

ba

49

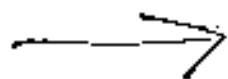
Handwritten musical notation for the first system. The treble staff contains a long slur over three measures of eighth-note chords. The bass staff contains chords: a whole note chord with a sharp sign (F#) in the first measure, two quarter notes (G and A) in the second measure, and a whole note chord with a sharp sign (F#) in the third measure.

Handwritten musical notation for the second system. The treble staff has a slur over three measures of eighth-note chords. The bass staff has a slur over the first two measures and a quarter note (G) in the third measure. Chords in the bass staff include a whole note chord with a flat sign (F) in the first measure, a whole note chord with a flat sign (F) in the second measure, and a whole note chord with a flat sign (F) in the third measure.

Handwritten musical notation for the third system. The treble staff has a slur over three measures of eighth-note chords. The bass staff has a slur over the first two measures and a whole note chord with a sharp sign (F#) in the third measure. Chords in the bass staff include a whole note chord with a sharp sign (F#) in the first measure, a whole note chord with a sharp sign (F#) in the second measure, and a whole note chord with a sharp sign (F#) in the third measure.

Handwritten musical notation for the fourth system. The treble staff has a slur over three measures of eighth-note chords. The bass staff has a slur over the first two measures and a whole note chord with a sharp sign (F#) in the third measure. Chords in the bass staff include a whole note chord with a sharp sign (F#) in the first measure, a whole note chord with a sharp sign (F#) in the second measure, and a whole note chord with a sharp sign (F#) in the third measure.

etwas schneller (vorwärts)



stems bewegt

Handwritten musical notation for 'stems bewegt'. It consists of two staves. The upper staff has a treble clef and a circled 'f' dynamic marking. The lower staff has a bass clef. The music features a series of chords and melodic lines with slurs, spanning four measures.

varia →

Handwritten musical notation for 'varia'. It consists of two staves. The upper staff has a treble clef. The lower staff has a bass clef. The music features a series of chords and melodic lines with slurs, spanning four measures.

de bewegt (♯)

Handwritten musical notation for 'de bewegt (♯)'. It consists of two staves. The upper staff has a treble clef and a circled 'ff' dynamic marking. The lower staff has a bass clef. The music is in 3/4 time and features a series of chords and melodic lines with slurs, spanning four measures.

Handwritten musical notation for the bottom section. It consists of two staves. The upper staff has a treble clef. The lower staff has a bass clef. The music features a series of chords and melodic lines with slurs, spanning four measures.

(poco rit.) Allegro con brio (cresc.)

Handwritten musical notation for the first system. The treble clef staff contains a melodic line with a slur over the first two measures. The bass clef staff contains a bass line with a slur over the first two measures. The key signature has one sharp (F#).

Handwritten musical notation for the second system. The treble clef staff continues the melodic line with a slur over the first two measures. The bass clef staff continues the bass line with a slur over the first two measures. The key signature has one sharp (F#).

meno (ritato (rca))

Handwritten musical notation for the third system. The treble clef staff continues the melodic line with a slur over the first two measures. The bass clef staff shows a change in the bass line, with a slur over the first two measures. The key signature has one sharp (F#).

Handwritten musical notation for the fourth system. The treble clef staff contains a complex melodic line with a slur over the first two measures. The bass clef staff contains a bass line with a slur over the first two measures. The key signature has one sharp (F#).

breit

Cont.

frei

ritard.

*Tempo Zurück

Kondens (frei)

Handwritten musical score for 'Kondens (frei)'. The score is written on two staves. The first staff has a treble clef and a key signature of one flat (B-flat). The second staff has a bass clef. The music begins with a 3/4 time signature. There are various notes, rests, and accidentals throughout. A large slur covers the first two measures. The word '(mit)' is written below the first staff. The word '(b)' is written below the first staff and the second staff. The word '(b)' is also written below the second staff. The word '(b)' is written below the second staff. The word '(b)' is written below the second staff.

Handwritten musical score for 'breit'. The score is written on two staves. The first staff has a treble clef and a key signature of one flat (B-flat). The second staff has a bass clef. The music begins with a 4/4 time signature. There are various notes, rests, and accidentals throughout. A large slur covers the first two measures. The word 'breit' is written above the first staff. The word 'breit' is written above the first staff. The word 'breit' is written above the first staff. The word 'breit' is written above the first staff.

breit (wie ein Choral)

Handwritten musical score for 'breit (wie ein Choral)'. The score is written on two staves. The first staff has a treble clef and a key signature of one flat (B-flat). The second staff has a bass clef. The music begins with a 4/4 time signature. There are various notes, rests, and accidentals throughout. A large slur covers the first two measures. The word 'breit' is written above the first staff. The word 'breit' is written above the first staff. The word 'breit' is written above the first staff. The word 'breit' is written above the first staff.

Handwritten musical score for 'breit (wie ein Choral)'. The score is written on two staves. The first staff has a treble clef and a key signature of one flat (B-flat). The second staff has a bass clef. The music begins with a 4/4 time signature. There are various notes, rests, and accidentals throughout. A large slur covers the first two measures. The word 'breit' is written above the first staff. The word 'breit' is written above the first staff. The word 'breit' is written above the first staff. The word 'breit' is written above the first staff.

Handwritten musical notation for the first system, featuring a treble clef, a key signature of one sharp (F#), and a 3/4 time signature. The melody consists of quarter notes: F#4, G4, A4, B4, C5, B4, A4, G4. The bass line consists of eighth notes: F#3, G3, A3, B3, C4, D4, E4, F#4.

Handwritten musical notation for the second system, featuring a treble clef, a key signature of one sharp (F#), and a 3/4 time signature. The melody consists of half notes: F#4, G4, A4, B4, C5, B4, A4, G4. The bass line consists of eighth notes: F#3, G3, A3, B3, C4, D4, E4, F#4. The system ends with a double bar line and the label "(b)".

grupus rit.

(b)

Handwritten musical notation for the third system, featuring a treble clef, a key signature of one sharp (F#), and a 3/4 time signature. The melody consists of quarter notes: F#4, G4, A4, B4, C5, B4, A4, G4. The bass line consists of eighth notes: F#3, G3, A3, B3, C4, D4, E4, F#4.

Lupa

Handwritten signature and scribbles, including the name "Shelby" and a large circular flourish.

No. 2

Improvisation über
(Oh - Heiland - ~~reiß die Himmel~~
auf...)

1980
Solo Johannes
für Orgel

Adagio (diäten)

poco unit...

breit

accel.

Adagio (Tempo)

(poco rit)

ador. cresc. (scherz.)

Handwritten musical score for 'ador. cresc. (scherz.)'. The score is written on two staves. The upper staff is in treble clef with a key signature of one sharp (F#) and a common time signature. It features a melodic line with a slur over the first two measures and a triplet of eighth notes in the third measure. The lower staff is in bass clef and contains a bass line with a slur over the first two measures and a series of eighth notes in the third measure. The word 'subito' is written below the first measure of the bass line.

stren. gran. (accel.)

Handwritten musical score for 'stren. gran. (accel.)'. The score is written on two staves. The upper staff is in treble clef with a key signature of one sharp (F#) and a common time signature. It features a melodic line with a slur over the first two measures and a slur over the last two measures. The lower staff is in bass clef and contains a bass line with a slur over the first two measures and a slur over the last two measures. An arrow points to the right above the third measure of the upper staff.

erregt

Handwritten musical score for 'erregt'. The score is written on two staves. The upper staff is in treble clef with a key signature of one sharp (F#) and a common time signature. It features a melodic line with a slur over the first two measures and a slur over the last two measures. The lower staff is in bass clef and contains a bass line with a slur over the first two measures and a slur over the last two measures.

zurück (poco rit.)

Handwritten musical score for 'zurück (poco rit.)'. The score is written on two staves. The upper staff is in treble clef with a key signature of one sharp (F#) and a common time signature. It features a melodic line with a slur over the first two measures and a slur over the last two measures. The lower staff is in bass clef and contains a bass line with a slur over the first two measures and a slur over the last two measures.

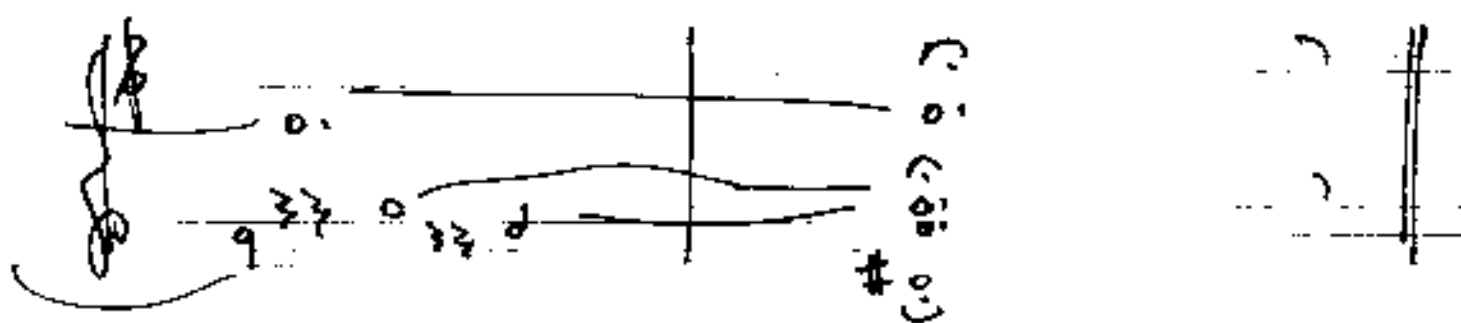
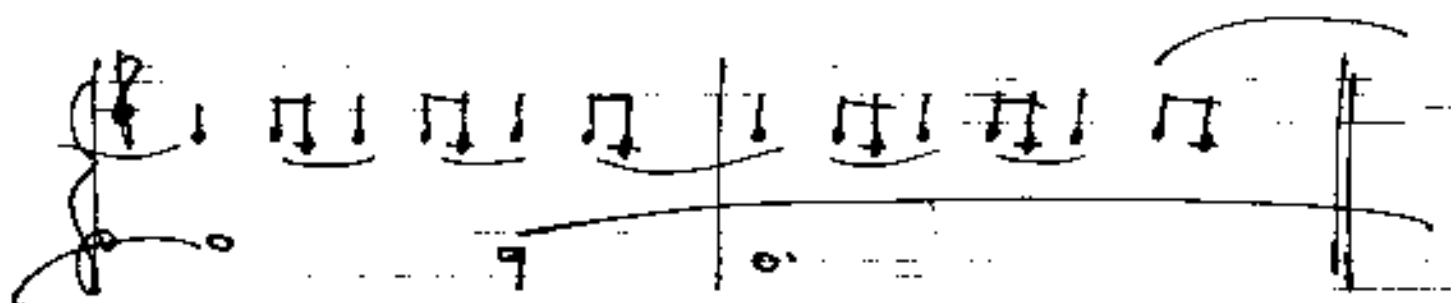
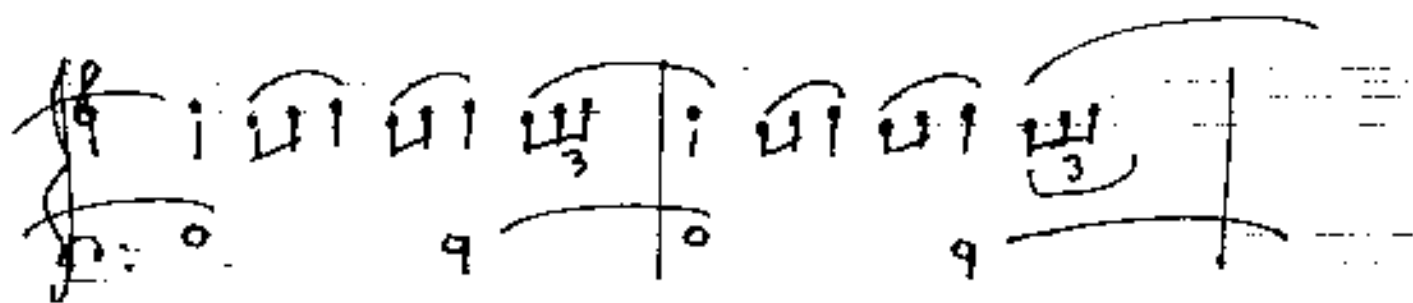
sehr ruhig (ad libitum)

Handwritten musical notation for the first system. It features a treble clef and a bass clef. The key signature has one flat (B-flat). The time signature is 4/4. The first measure contains a treble staff with a quarter note G4, a quarter note A4, and a quarter note B4, followed by a quarter rest. The bass staff has a whole note G3. The second measure contains a treble staff with a quarter note C5, a quarter note B4, and a quarter note A4, followed by a quarter rest. The bass staff has a whole note F3. There are dynamic markings 'p' and 'f' and a circled 'p' in the bass staff.

Handwritten musical notation for the second system. It features a treble clef and a bass clef. The key signature has one flat. The time signature is 4/4. The first measure contains a treble staff with a quarter note G4, a quarter note A4, and a quarter note B4, followed by a quarter rest. The bass staff has a whole note G3. The second measure contains a treble staff with a quarter note C5, a quarter note B4, and a quarter note A4, followed by a quarter rest. The bass staff has a whole note F3. The third measure contains a treble staff with a quarter note G4, a quarter note A4, and a quarter note B4, followed by a quarter rest. The bass staff has a whole note E3. There are dynamic markings 'p' and 'f' and a circled 'p' in the bass staff.

Handwritten musical notation for the third system. It features a treble clef and a bass clef. The key signature has one flat. The time signature is 4/4. The first measure contains a treble staff with a quarter note G4, a quarter note A4, and a quarter note B4, followed by a quarter rest. The bass staff has a whole note G3. The second measure contains a treble staff with a quarter note C5, a quarter note B4, and a quarter note A4, followed by a quarter rest. The bass staff has a whole note F3. The third measure contains a treble staff with a quarter note G4, a quarter note A4, and a quarter note B4, followed by a quarter rest. The bass staff has a whole note E3. There are dynamic markings 'p' and 'f' and a circled 'p' in the bass staff.

Handwritten musical notation for the fourth system. It features a treble clef and a bass clef. The key signature has one flat. The time signature is 4/4. The first measure contains a treble staff with a quarter note G4, a quarter note A4, and a quarter note B4, followed by a quarter rest. The bass staff has a whole note G3. The second measure contains a treble staff with a quarter note C5, a quarter note B4, and a quarter note A4, followed by a quarter rest. The bass staff has a whole note F3. The third measure contains a treble staff with a quarter note G4, a quarter note A4, and a quarter note B4, followed by a quarter rest. The bass staff has a whole note E3. There are dynamic markings 'p' and 'f' and a circled 'p' in the bass staff.



frei beginnen (ständige Steigerung) —

Presto (coda bewegt - bewegt)

12
8

brilliant

Handwritten musical notation on a grand staff. The first measure shows a treble clef with a key signature of two sharps (F# and C#) and a bass clef with a key signature of two sharps. The second measure shows a treble clef with a key signature of two flats (Bb and Eb) and a bass clef with a key signature of two flats. Both measures contain chords and are connected by a slur.

Handwritten musical notation on a grand staff. The first measure shows a treble clef with a key signature of two flats (Bb and Eb) and a bass clef with a key signature of two flats. The second measure shows a treble clef with a key signature of two sharps (F# and C#) and a bass clef with a key signature of two sharps. Both measures contain chords and are connected by a slur.

Handwritten musical notation on a grand staff. The first measure shows a treble clef with a key signature of two sharps (F# and C#) and a bass clef with a key signature of two sharps. The second measure shows a treble clef with a key signature of two flats (Bb and Eb) and a bass clef with a key signature of two flats. Both measures contain chords and are connected by a slur.

Handwritten musical notation on a grand staff. The first measure shows a treble clef with a key signature of two sharps (F# and C#) and a bass clef with a key signature of two sharps. The second measure shows a treble clef with a key signature of two sharps (F# and C#) and a bass clef with a key signature of two sharps. Both measures contain chords and are connected by a slur. A circled number "10" is written at the end of the second measure.

Handwritten musical notation for the first system. The top staff is in treble clef and the bottom staff is in bass clef. The music consists of two measures. The first measure has a half note G4 in the treble and a half note E3 in the bass. The second measure has a half note Bb4 in the treble and a half note G2 in the bass. A slur covers the notes in both staves across both measures.

Handwritten musical notation for the second system. The top staff is in treble clef and the bottom staff is in bass clef. The music consists of two measures. The first measure has a half note G4 in the treble and a half note E3 in the bass. The second measure has a half note Bb4 in the treble and a half note G2 in the bass. A slur covers the notes in both staves across both measures.

Handwritten musical notation for the third system. The top staff is in treble clef and the bottom staff is in bass clef. The music consists of two measures. The first measure has a half note G4 in the treble and a half note E3 in the bass. The second measure has a half note Bb4 in the treble and a half note G2 in the bass. A slur covers the notes in both staves across both measures.

Handwritten musical notation for the fourth system. The top staff is in treble clef and the bottom staff is in bass clef. The music consists of two measures. The first measure has a half note G4 in the treble and a half note E3 in the bass. The second measure has a half note Bb4 in the treble and a half note G2 in the bass. A slur covers the notes in both staves across both measures.

Meno (Poco)

Handwritten musical notation for the first system. The treble clef staff contains a sequence of notes: \flat^2 , \flat^3 , \flat^4 , \flat^5 , \flat^6 , \flat^7 . The bass clef staff contains notes: \flat^4 , \flat^5 , \flat^6 . The system concludes with two whole rests in the treble staff and a complex rhythmic pattern in the bass staff.

quadrato

Handwritten musical notation for the second system. The treble clef staff contains notes: \flat^4 , \flat^5 , \flat^6 , \flat^7 , \flat^8 . The bass clef staff contains notes: \flat^4 , \flat^5 , \flat^6 , \flat^7 , \flat^8 . The system concludes with two whole rests in the treble staff and a complex rhythmic pattern in the bass staff.

Handwritten musical notation for the third system. The treble clef staff contains notes: \flat^4 , \flat^5 , \flat^6 , \flat^7 , \flat^8 . The bass clef staff contains notes: \flat^4 , \flat^5 , \flat^6 , \flat^7 , \flat^8 . The system concludes with two whole rests in the treble staff and a complex rhythmic pattern in the bass staff.

(26 + 20. mit) poco (out ...)

Handwritten musical notation for the fourth system. The treble clef staff contains notes: \flat^4 , \flat^5 , \flat^6 , \flat^7 , \flat^8 . The bass clef staff contains notes: \flat^4 , \flat^5 , \flat^6 , \flat^7 , \flat^8 . The system concludes with two whole rests in the treble staff and a complex rhythmic pattern in the bass staff.

Adagio (frit) leading pesante accel.

Handwritten musical score for the first system. It consists of two staves. The left staff is in G major (one sharp) and 3/4 time. It begins with a piano (p) dynamic and a tempo marking of Adagio (frit). The right staff is in G major and 3/4 time. It begins with a piano (p) dynamic and a tempo marking of pesante. A circled '1)' is written above the first measure. The system concludes with an acceleration (accel.) marking. The music features a melodic line in the right hand and a supporting bass line in the left hand.

breit pesante (accel.)

Handwritten musical score for the second system. It consists of two staves. The left staff is in G major and 3/4 time. It begins with a piano (p) dynamic and a tempo marking of Adagio. The right staff is in G major and 3/4 time. It begins with a piano (p) dynamic and a tempo marking of pesante (accel.). A circled '2)' is written above the first measure. The system concludes with an acceleration (accel.) marking. The music features a melodic line in the right hand and a supporting bass line in the left hand.

frit / Presto

Handwritten musical score for the third system. It consists of two staves. The left staff is in G major and 3/4 time. It begins with a piano (p) dynamic and a tempo marking of Adagio. The right staff is in G major and 3/4 time. It begins with a piano (p) dynamic and a tempo marking of Presto. The system concludes with a double bar line. The music features a rapid melodic line in the right hand and a supporting bass line in the left hand.

Handwritten musical score for the fourth system. It consists of two staves. The left staff is in G major and 3/4 time. It begins with a piano (p) dynamic and a tempo marking of Adagio. The right staff is in G major and 3/4 time. It begins with a piano (p) dynamic and a tempo marking of Presto. The system concludes with a double bar line. The music features a rapid melodic line in the right hand and a supporting bass line in the left hand.

de boert (overland)

Handwritten musical notation for the first system of 'de boert (overland)'. It consists of three staves. The top staff is in treble clef with a 6/8 time signature. The middle staff is in bass clef with a 4/4 time signature. The bottom staff is in bass clef. The music features a melody in the top staff and accompaniment in the lower staves, with various chords and notes connected by slurs.

Handwritten musical notation for the second system of 'de boert (overland)'. It consists of three staves. The top staff is in treble clef. The middle staff is in bass clef. The bottom staff is in bass clef. The music continues with a melody in the top staff and accompaniment in the lower staves, featuring slurs and various musical notations.

Handwritten musical notation for the third system of 'de boert (overland)'. It consists of three staves. The top staff is in treble clef. The middle staff is in bass clef. The bottom staff is in bass clef. The music concludes with a melody in the top staff and accompaniment in the lower staves, ending with a double bar line.

(qu. mt.)

Handwritten musical score for three staves. The top staff has a treble clef and contains notes: d, d, a', a'. The middle staff has a bass clef and contains notes: q', q', o', o'. The bottom staff has a bass clef and contains notes: o', o', o', o'. There are various accidentals and slurs throughout the piece.

Lunga

Handwritten musical score for three staves. The top staff has a treble clef and contains notes: #g, #g, #g. The middle staff has a bass clef and contains notes: #g, #g, #g. The bottom staff has a bass clef and contains notes: o, o, o. There is a large scribble on the right side of the page.

No. 3

Improvisation über

(Oh - Heiland - reiß die Himmel auf...)

1960

Adolf Blum

für Orgel

lento (distinto) o da langsam

Handwritten musical notation for the first system. The treble clef has a circled '2' next to it. The key signature has one flat (B-flat). The melody consists of three measures: the first measure has a quarter note G4, a quarter note A4, and a quarter note B4; the second measure has a quarter note C5, a quarter note B4, and a quarter note A4; the third measure has a quarter note G4. A slur covers all three measures. The bass clef accompaniment consists of three measures of eighth notes: the first measure has B3, A3, G3, F3; the second measure has E3, D3, C3, B2; the third measure has A2, G2, F2, E2.

Handwritten musical notation for the second system. The treble clef has a circled '2' next to it. The key signature has one flat (B-flat). The melody consists of three measures: the first measure has a quarter note G4, a quarter note A4, and a quarter note B4; the second measure has a quarter note C5, a quarter note B4, and a quarter note A4; the third measure has a quarter note G4. A slur covers all three measures. The bass clef accompaniment consists of three measures of eighth notes: the first measure has B3, A3, G3, F3; the second measure has E3, D3, C3, B2; the third measure has A2, G2, F2, E2.

Handwritten musical notation for the third system. The treble clef has a circled '2' next to it. The key signature has one flat (B-flat). The melody consists of three measures: the first measure has a quarter note G4, a quarter note A4, and a quarter note B4; the second measure has a quarter note C5, a quarter note B4, and a quarter note A4; the third measure has a quarter note G4. A slur covers all three measures. The bass clef accompaniment consists of three measures of eighth notes: the first measure has B3, A3, G3, F3; the second measure has E3, D3, C3, B2; the third measure has A2, G2, F2, E2.

Handwritten musical notation for the fourth system. The treble clef has a circled '2' next to it. The key signature has one flat (B-flat). The melody consists of three measures: the first measure has a quarter note G4, a quarter note A4, and a quarter note B4; the second measure has a quarter note C5, a quarter note B4, and a quarter note A4; the third measure has a quarter note G4. A slur covers all three measures. The bass clef accompaniment consists of three measures of eighth notes: the first measure has B3, A3, G3, F3; the second measure has E3, D3, C3, B2; the third measure has A2, G2, F2, E2.

Handwritten musical notation for the first system. The treble staff contains a melodic line with notes and accidentals (sharps and flats) across four measures. The bass staff contains a bass line with notes and accidentals, including a double bar line in the second measure.

Handwritten musical notation for the second system. The treble staff has notes with accidentals and slurs. The bass staff features a complex rhythmic pattern with many notes and slurs, indicating a more active bass line.

Handwritten musical notation for the third system. The treble staff shows notes with accidentals and slurs. The bass staff has a rhythmic pattern with notes and slurs, similar to the second system.

Handwritten musical notation for the fourth system. The treble staff has notes with accidentals and slurs. The bass staff has a rhythmic pattern with notes and slurs. The instruction "poco rit." is written above the staff, and a circled "2" is at the end of the system.

Tempo steigern

sehr breit (rasche (A) rubato)

accel. (op 2) rasch

breit (A)

(rit...)

rubato (A) frei

Handwritten musical notation on a grand staff. The first measure contains a treble clef, a 4/4 time signature, and a melodic line with a slur. The second measure contains a bass clef, a 3/4 time signature, and a bass line with a slur. Above the second measure, there is a circled 'b' and the text 'd. (b)'.

acc. → (afz)

Handwritten musical notation on a grand staff. The first measure has a treble clef and a melodic line with a slur. The second measure has a bass clef and a bass line with a slur. The third measure has a treble clef and a melodic line with a slur. The fourth measure has a bass clef and a bass line with a slur.

parade beginnen → ev. Heigerung →

Handwritten musical notation on a grand staff. The first measure has a treble clef and a melodic line with a slur. The second measure has a bass clef and a bass line with a slur. The third measure has a treble clef and a melodic line with a slur. The fourth measure has a bass clef and a bass line with a slur.

Handwritten musical notation on a grand staff. The first measure has a treble clef and a melodic line with a slur. The second measure has a bass clef and a bass line with a slur. The third measure has a treble clef and a melodic line with a slur. The fourth measure has a bass clef and a bass line with a slur.

Meno appassionato (trac)

rit

Handwritten musical score for the first system, measures 1-3. It features a treble clef with a key signature of one sharp (F#) and a common time signature. The right hand plays chords with slurs and accents. The left hand plays a simple bass line with slurs. A 'rit' marking is present above the first measure.

Handwritten musical score for the second system, measures 4-6. It continues the musical notation from the first system, with similar chordal textures in the right hand and a steady bass line in the left hand.

poco rit

Handwritten musical score for the third system, measures 7-9. The notation continues, with a 'poco rit' marking above the first measure. The right hand chords are more complex, and the left hand maintains its simple accompaniment.

Solo best

(frei)

Handwritten musical score for Solo best (frei). The score is written on three staves: Treble, Bass, and Cello/Double Bass. The first measure shows chords in the Treble and Bass staves with a '47' marking. The second measure is marked 'nach' and shows a sequence of chords in the Treble staff, with a triplet of chords in the Bass staff and a large bracketed section in the Treble staff ending with an arrow.

best

nach (frei)

Handwritten musical score for best nach (frei). The score is written on three staves: Treble, Bass, and Cello/Double Bass. The first measure shows chords in the Treble and Bass staves with a '47' marking. The second measure is marked 'nach' and shows a sequence of chords in the Treble staff, with a triplet of chords in the Bass staff and a large bracketed section in the Treble staff ending with an arrow.

best

nach

Handwritten musical score for best nach. The score is written on three staves: Treble, Bass, and Cello/Double Bass. The first measure shows chords in the Treble and Bass staves with a '47' marking. The second measure is marked 'nach' and shows a sequence of chords in the Treble staff, with a triplet of chords in the Bass staff and a large bracketed section in the Treble staff ending with an arrow.

breit

grand

Handwritten musical score for the first system. It consists of two staves: a piano staff on the left and a grand staff on the right. The piano staff has a treble clef and a key signature of two flats (B-flat and E-flat). The grand staff has a treble clef and a key signature of two flats. The music includes various notes, rests, and slurs, with some notes marked with '47'.

Presto (narrowhead) (brilliant)

(a2)

Handwritten musical score for the second system. It consists of two staves: a piano staff on the left and a grand staff on the right. The piano staff has a treble clef and a key signature of one flat (B-flat). The grand staff has a treble clef and a key signature of one flat. The music includes various notes, rests, and slurs, with some notes marked with 'a2'.

Handwritten musical score for the third system. It consists of two staves: a piano staff on the left and a grand staff on the right. The piano staff has a treble clef and a key signature of one flat (B-flat). The grand staff has a treble clef and a key signature of one flat. The music includes various notes, rests, and slurs, with some notes marked with 'a2'.

Handwritten musical score for a piano piece. The first system consists of two staves. The upper staff is in treble clef and contains a melodic line with several slurs. The lower staff is in bass clef and contains a whole note chord. The second system continues the melodic lines with similar notation.

brevit — (rit)

Handwritten musical score for a piano piece. The first system consists of three staves. The upper staff is in treble clef and contains a melodic line with several slurs. The middle staff is in middle clef and contains a melodic line with slurs. The lower staff is in bass clef and contains a whole note chord. The second system continues the melodic lines with similar notation.

longa

presente (f)

G.P.

Lento (oltraten)

(H)

Handwritten musical notation for the first system, featuring a grand staff with treble and bass clefs. The key signature has one flat (B-flat). The time signature is 8/8. The music consists of two measures. The first measure has a long, sweeping slur over the notes, with a circled 'pp' dynamic marking above it. The second measure continues the melodic line with various accidentals.

sehr langsam)

Handwritten musical notation for the second system, featuring a grand staff with treble and bass clefs. The key signature has one flat (B-flat). The music consists of two measures. The first measure has a long, sweeping slur over the notes, with a circled 'pp' dynamic marking above it. The second measure continues the melodic line with various accidentals.

Handwritten musical notation for the third system, featuring a grand staff with treble and bass clefs. The key signature has one flat (B-flat). The music consists of two measures. The first measure has a long, sweeping slur over the notes, with a circled 'pp' dynamic marking above it. The second measure continues the melodic line with various accidentals.

Handwritten musical notation on a five-line staff. The top staff has a treble clef and a key signature of one flat (B-flat). It features a melodic line with a slur over two measures. The first measure contains a half note G4, and the second measure contains a half note G4 with a flat (B-flat). The bottom staff has a bass clef and contains a bass line with eighth and quarter notes: B3, A3, G3, F3, E3, D3, C3, B2, A2, G2.

Handwritten musical notation on a five-line staff. The top staff has a treble clef and a key signature of one flat (B-flat). It features a melodic line with a slur over three measures. The first measure contains a half note G4, the second measure contains a half note G4 with a flat (B-flat), and the third measure contains a half note G4. The bottom staff has a bass clef and contains a bass line with eighth and quarter notes: B3, A3, G3, F3, E3, D3, C3, B2, A2, G2.

Handwritten musical notation on a five-line staff. The top staff has a treble clef and a key signature of one flat (B-flat). It features a melodic line with a slur over three measures. The first measure contains a half note G4, the second measure contains a half note G4 with a flat (B-flat), and the third measure contains a half note G4 with a double flat (B-double flat). The bottom staff has a bass clef and contains a bass line with eighth and quarter notes: B3, A3, G3, F3, E3, D3, C3, B2, A2, G2.

Handwritten musical notation on a five-line staff. The top staff has a treble clef and a key signature of one flat (B-flat). It features a melodic line with a slur over four measures. The first measure contains a half note G4 with a double flat (B-double flat), the second measure contains a half note G4, the third measure contains a half note G4, and the fourth measure contains a half note G4. The bottom staff has a bass clef and contains a bass line with eighth and quarter notes: B3, A3, G3, F3, E3, D3, C3, B2, A2, G2.

44. *Ev. pit*

Handwritten musical notation on a three-staff system. The top staff has a treble clef and a 'C' time signature. The middle staff has a bass clef and a 'M' time signature. The bottom staff has a bass clef. The music consists of four measures. The first measure has a whole note 'C' in the top staff and a whole note 'C' in the bottom staff. The second measure has a whole note 'B' in the top staff and a whole note 'C' in the bottom staff. The third measure has a whole note 'B' in the top staff and a whole note 'C' in the bottom staff. The fourth measure has a whole note 'B' in the top staff and a whole note 'C' in the bottom staff. There are various accidentals and markings throughout.

(2nd)

Handwritten musical notation on a three-staff system. The top staff has a treble clef. The middle staff has a bass clef. The bottom staff has a bass clef. The music consists of four measures. The first measure has a whole note 'C' in the top staff and a whole note 'C' in the bottom staff. The second measure has a whole note 'B' in the top staff and a whole note 'C' in the bottom staff. The third measure has a whole note 'B' in the top staff and a whole note 'C' in the bottom staff. The fourth measure has a whole note 'B' in the top staff and a whole note 'C' in the bottom staff. There are various accidentals and markings throughout.

Handwritten musical notation on a three-staff system. The top staff has a treble clef. The middle staff has a bass clef. The bottom staff has a bass clef. The music consists of four measures. The first measure has a whole note 'C' in the top staff and a whole note 'C' in the bottom staff. The second measure has a whole note 'B' in the top staff and a whole note 'C' in the bottom staff. The third measure has a whole note 'B' in the top staff and a whole note 'C' in the bottom staff. The fourth measure has a whole note 'B' in the top staff and a whole note 'C' in the bottom staff. There are various accidentals and markings throughout.

lunga

Handwritten signature or scribble

No. 4.

Schlussstück

Improvisation über

(Oh - Heiland - greiß die Himmel
auf -)

1880

Josef Lehmann

(2) *breve (distinta) estra langsam*

pp

pp

pp


Handwritten musical notation for the first system, featuring a treble clef and a bass clef. The treble staff has a whole note chord, and the bass staff contains a melodic line with various accidentals. A slur is drawn over the entire system.

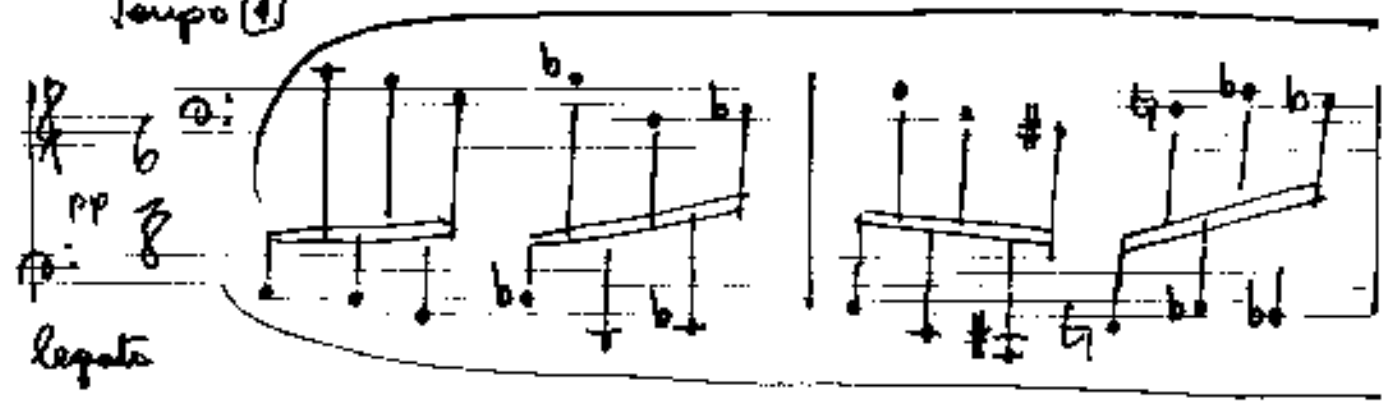
Handwritten musical notation for the second system, featuring a treble clef and a bass clef. The treble staff has a whole note chord with "9" and "b9" markings. The bass staff contains a melodic line with various accidentals. A slur is drawn over the entire system.

Handwritten musical notation for the third system, featuring a treble clef and a bass clef. The treble staff has a whole note chord with "9" and "b9" markings. The bass staff contains a melodic line with various accidentals. A slur is drawn over the entire system.

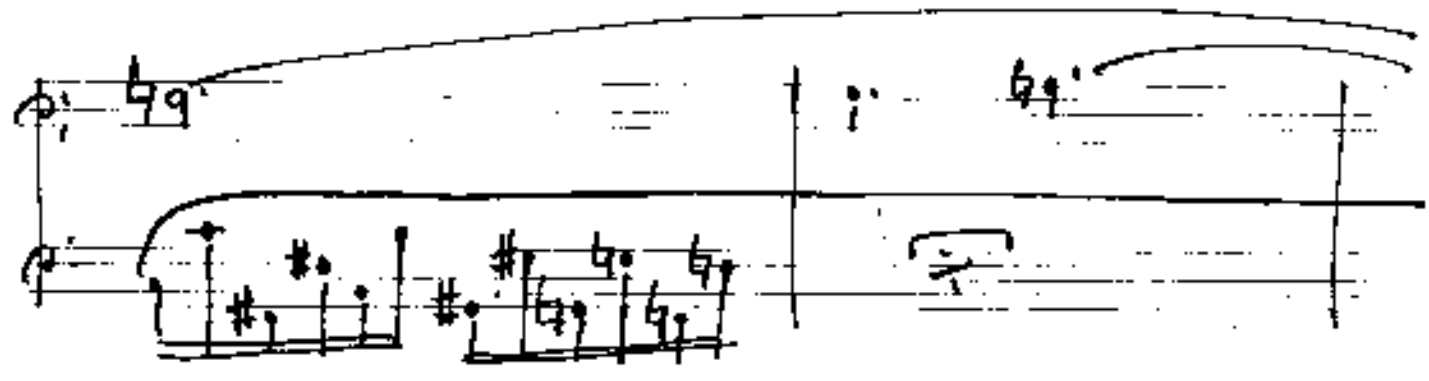
poco rit

Handwritten musical notation for the fourth system, featuring a treble clef and a bass clef. The treble staff has a melodic line with a 6/8 time signature and various accidentals. The bass staff has a rhythmic accompaniment with various accidentals. A slur is drawn over the entire system.

Tempo  (N)



pp
legato



Handwritten musical notation on a five-line staff. The top staff contains a treble clef, a key signature of one flat (B-flat), and a time signature of 3/4. The first measure has a whole note chord with a fermata. The second measure has a half note chord with a fermata. The third measure has a quarter note chord with a fermata. The bottom staff contains a bass clef and a complex melodic line with many accidentals (sharps and flats) and slurs.

Handwritten musical notation on a five-line staff. The top staff contains a treble clef, a key signature of one flat (B-flat), and a time signature of 3/4. The first measure has a whole note chord with a fermata. The second measure has a half note chord with a fermata. The third measure has a quarter note chord with a fermata. The bottom staff contains a bass clef and a complex melodic line with many accidentals (sharps and flats) and slurs.

Handwritten musical notation on a five-line staff. The top staff contains a treble clef, a key signature of one flat (B-flat), and a time signature of 3/4. The first measure has a whole note chord with a fermata. The second measure has a half note chord with a fermata. The third measure has a quarter note chord with a fermata. The bottom staff contains a bass clef and a complex melodic line with many accidentals (sharps and flats) and slurs.

Handwritten musical notation on a five-line staff. The top staff contains a treble clef, a key signature of one flat (B-flat), and a time signature of 3/4. The first measure has a whole note chord with a fermata. The second measure has a half note chord with a fermata. The third measure has a quarter note chord with a fermata. The bottom staff contains a bass clef and a complex melodic line with many accidentals (sharps and flats) and slurs.

Handwritten musical notation on a grand staff. The treble clef staff features a melodic line with notes $b^{\flat}g^{\flat}$, $\sharp f^{\sharp}$, and d^{\flat} , all marked with a fermata. A handwritten $\frac{3}{2}$ is written above the first two notes. The bass clef staff contains a rhythmic accompaniment of eighth notes with various accidentals.

Handwritten musical notation on a grand staff. The treble clef staff has a melodic line with notes g^{\flat} and f^{\sharp} , both with fermatas. The bass clef staff continues the rhythmic accompaniment. A circled number '1' is written in the left margin.

Handwritten musical notation on a grand staff. The treble clef staff features a melodic line with notes d^{\flat} , g^{\flat} , d^{\flat} , g^{\flat} , and d^{\flat} , each with a fermata. The bass clef staff continues the rhythmic accompaniment.

Handwritten musical notation on a grand staff. The treble clef staff has a melodic line with notes g^{\flat} , d^{\flat} , and f^{\sharp} , all with fermatas. The bass clef staff continues the rhythmic accompaniment.

Handwritten musical notation on a grand staff. The upper staff features a melodic line with a slur over three measures. The notes are $\overset{\flat}{d}^{\flat}$, $\overset{\flat}{d}^{\flat}$, and $\overset{\flat}{d}^{\flat}$. The lower staff contains a bass line with eighth notes and rests.

Handwritten musical notation on a grand staff. The upper staff features a melodic line with a slur over three measures. The notes are $\overset{\flat}{d}^{\flat}$, $\overset{\flat}{d}^{\flat}$, and $\overset{\flat}{d}^{\flat}$. A circled *mf* dynamic marking is present in the first measure. The lower staff contains a bass line with eighth notes and rests.

Handwritten musical notation on a grand staff. The upper staff features a melodic line with a slur over three measures. The notes are $\overset{\flat}{d}^{\flat}$, $\overset{\flat}{d}^{\flat}$, and $\overset{\flat}{d}^{\flat}$. The lower staff contains a bass line with eighth notes and rests.

Handwritten musical notation on a grand staff. The upper staff features a melodic line with a slur over two measures. The notes are $\overset{\flat}{d}^{\flat}$ and $\overset{\flat}{d}^{\flat}$. The lower staff contains a bass line with eighth notes and rests.

Handwritten musical notation for the first system. The upper staff is in treble clef with a common time signature. It contains four measures of music, each with a chord of four notes (two stems, two beams) and a slur above. The lower staff is in bass clef and contains a bass line with notes and accidentals: a quarter note G#1, a quarter note A1, a quarter note B1, and a quarter note C2.

Handwritten musical notation for the second system. The upper staff is in treble clef with a common time signature. It contains four measures: a quarter note G1, a quarter note A1, a quarter note B1, and a quarter note C2, all slurred together with a fermata over the final note. The lower staff is in bass clef and contains a bass line with notes and accidentals: a quarter note G#1, a quarter note A1, a quarter note B1, and a quarter note C2.

Handwritten musical notation for the third system. The upper staff is in treble clef with a common time signature. It contains four measures: a quarter note G1, a quarter note A1, a quarter note B1, and a quarter note C2, all slurred together with a fermata over the final note. The lower staff is in bass clef and contains a bass line with notes and accidentals: a quarter note G#1, a quarter note A1, a quarter note B1, and a quarter note C2.

Handwritten musical notation for the fourth system. The upper staff is in treble clef with a common time signature. It contains four measures: a quarter note G1, a quarter note A1, a quarter note B1, and a quarter note C2, all slurred together with a fermata over the final note. The lower staff is in bass clef and contains a bass line with notes and accidentals: a quarter note G#1, a quarter note A1, a quarter note B1, and a quarter note C2.

voll werk (pesante)

großes rit

Handwritten musical notation for the first system. It consists of a grand staff with a treble clef on the top line and a bass clef on the bottom line. The music is written in a key signature of one flat (B-flat major or D minor). The first measure contains a piano (p) dynamic marking. The notation includes several notes and rests across three measures.

Handwritten musical notation for the second system. It consists of a grand staff with a treble clef on the top line and a bass clef on the bottom line. The music is written in a key signature of one flat. The notation includes several notes and rests across three measures, with a piano (p) dynamic marking.

Handwritten musical notation for the third system. It consists of a grand staff with a treble clef on the top line and a bass clef on the bottom line. The music is written in a key signature of one flat. The notation includes several notes and rests across three measures, with a piano (p) dynamic marking and a 'lunga' marking above the staff.

breit — (ev. mit)

(2)

Handwritten signature