

L.V. BEETHOVEN



W.A. MOZART



NOTENHEFT

F. SCHUBERT



J. HAYDN



J. STRAUSS



© 1998 by Schott Music, Mainz, Germany. All rights reserved.
Printed in Austria on acid-free paper.

MADE IN AUSTRIA

14 Preludium

für

Orgel (at.lib.) Elektronenorgel)

1980

Adolf Scherbaum

(Text - (Texttitel) =
Bertolt Brecht.

(Der Blumen garten)

ruhig



Handwritten musical notation for the first system, featuring treble and bass staves with notes and rests. A circled 'p' is present in the first measure of the bass staff.

mit gr. Ruhe

Handwritten musical notation for the second system, featuring treble and bass staves with notes and rests.



Handwritten musical notation for the third system, featuring treble and bass staves with notes and rests. The system concludes with a double bar line and repeat dots.

Handwritten musical notation for the fourth system, featuring treble and bass staves with notes and rests. A circled 'p' is present in the first measure of the bass staff.

Handwritten musical notation for the first system. The treble clef staff contains notes: $\sharp d$, d , $\sharp g$, $\sharp g$, g . The bass clef staff contains notes: $\flat b$, $\flat b$, $\sharp f$, $\sharp f$, $\sharp f$. A large slur covers the entire system.

Handwritten musical notation for the second system. The treble clef staff contains notes: $\sharp f$, $\sharp f$, $\sharp f$, $\sharp f$, $\sharp f$, $\flat b$, $\flat b$, $\flat b$, $\flat b$, $\flat b$. A large slur covers the entire system.

Handwritten musical notation for the third system. The treble clef staff contains notes: $\flat b$, g . The bass clef staff contains a dash. To the right, the marking "D.C. al" is written above a circled cross symbol \oplus . A double bar line with repeat dots is present.

Handwritten musical notation for the fourth system. The treble clef staff contains notes: d , d , $\flat f$. The bass clef staff contains notes: g , $\flat b$. A circled cross symbol \oplus is on the left. The text "mit..." is written between the staves. A double bar line is on the right.

Auf einen chinesischen Tee wurzellöwen

B

breit (Maestoso) (♩) *ad lib.*

Handwritten musical notation for the first system, featuring treble and bass clefs, a key signature of one flat, and a 3/4 time signature. The notation includes chords and melodic lines with slurs and dynamics like *ff*.

Handwritten musical notation for the second system, featuring treble and bass clefs, a key signature of two sharps, and a 3/4 time signature. The notation includes chords and melodic lines with slurs and dynamics like *ff*.

Handwritten musical notation for the third system, featuring treble and bass clefs, a key signature of two sharps, and a 3/4 time signature. The notation includes chords and melodic lines with slurs and dynamics like *ff*.

Handwritten musical notation for the first system. The top staff (treble clef) contains a melodic line with notes G4, A4, B4, and C5, with a flat sign under the B4. The bottom staff (bass clef) contains a bass line with notes G3, A3, and B3, with a sharp sign under the G3. Both staves have a repeat sign at the beginning and are connected by a brace.

Handwritten musical notation for the second system. The top staff (treble clef) contains a melodic line with notes D5, E5, and F5, with a sharp sign under the D5. The bottom staff (bass clef) contains a bass line with notes G3, A3, and B3, with a flat sign under the G3. Both staves have a repeat sign at the beginning and are connected by a brace.

Handwritten musical notation for the third system. The system is divided into two parts by a double bar line. The left part shows two staves with a treble clef and a bass clef, both containing a series of notes (G, A, B, C) with a flat sign under the G. The right part shows two staves with a treble clef and a bass clef, both containing a series of notes (G, A, B, C) with a sharp sign under the G. A key signature change is indicated by a sharp sign on the G line of the treble staff.

Handwritten musical notation for the fourth system. The system is divided into two parts by a double bar line. The left part shows two staves with a treble clef and a bass clef, both containing a series of notes (G, A, B, C) with a sharp sign under the G. The right part shows two staves with a treble clef and a bass clef, both containing a series of notes (G, A, B, C) with a sharp sign under the G. A key signature change is indicated by a sharp sign on the G line of the treble staff.

Der Pflaumenbaum



lento

poco rit

Handwritten musical notation for the first system. The treble clef is circled. The music consists of two measures. The first measure has a quarter rest in the treble and a quarter note with a flat in the bass. The second measure has a quarter note with a sharp in the treble and a quarter rest in the bass. A fermata is placed over the end of the system.

Handwritten musical notation for the second system. The treble clef has a circled sharp sign. The music consists of two measures. The first measure has a quarter note with a flat in the treble and a quarter note with a flat in the bass. The second measure has a quarter note with a sharp in the treble and a quarter note with a sharp in the bass. A fermata is placed over the end of the system.

Handwritten musical notation for the third system. The treble clef has a circled sharp sign. The music consists of two measures. The first measure has a quarter note with a flat in the treble and a quarter note with a flat in the bass. The second measure has a quarter note with a sharp in the treble and a quarter note with a sharp in the bass. A fermata is placed over the end of the system.

Handwritten musical notation for the fourth system. The music consists of three measures. The first measure has a quarter note with a sharp in the treble and a quarter note with a flat in the bass. The second measure has a quarter note with a sharp in the treble and a quarter rest in the bass, with a circled 'p' below. The third measure has a quarter note with a sharp in the treble and a quarter note with a sharp in the bass, with 'pp' below. A fermata is placed over the end of the system.

Die Maske des Bösen

(D)

sehr rasch (brilliant)

Handwritten musical notation for the first system. It consists of two staves. The upper staff is in treble clef and contains two measures of music. The first measure has a treble clef, a key signature of one flat (B-flat), and a dynamic marking of *f*. It features a triplet of eighth notes. The second measure has a repeat sign. The lower staff is in bass clef and also contains two measures. The first measure has a bass clef and a dynamic marking of *f*. It features a triplet of eighth notes. The second measure has a repeat sign. A large slur encompasses both staves across both measures.

Handwritten musical notation for the second system. It consists of two staves. The upper staff is in treble clef and contains two measures of music. The first measure has a treble clef and a dynamic marking of *f*. It features a triplet of eighth notes. The second measure has a repeat sign. The lower staff is in bass clef and also contains two measures. The first measure has a bass clef and a dynamic marking of *f*. It features a triplet of eighth notes. The second measure has a repeat sign. A large slur encompasses both staves across both measures.

Handwritten musical notation for the third system. It consists of two staves. The upper staff is in treble clef and contains two measures of music. The first measure has a treble clef and a dynamic marking of *f*. It features a triplet of eighth notes. The second measure has a repeat sign. The lower staff is in bass clef and also contains two measures. The first measure has a bass clef and a dynamic marking of *f*. It features a triplet of eighth notes. The second measure has a repeat sign. A large slur encompasses both staves across both measures.

(letzte + hier v.)

breit

Ruolen - Gespräche

(E)

gentil (Andante)

zögernd)

Tempo

Handwritten musical notation for the first system. The treble clef staff contains notes: $\dot{1}$, $\flat\dot{2}$, $\dot{3}$, $\flat\dot{4}$. The bass clef staff contains notes: $\sharp\dot{1}$, $\dot{2}$, $\dot{3}$, $\dot{4}$. A circled 'p' is written in the first measure of the treble staff. A large slur covers the entire system.

Handwritten musical notation for the second system. The treble clef staff contains notes: $\sharp\dot{1}$, $\dot{2}$, $\sharp\dot{3}$, $\sharp\dot{4}$. The bass clef staff contains notes: $\dot{1}$, $\dot{2}$, $\dot{3}$, $\dot{4}$. A large slur covers the entire system.

(letzte + rit....)

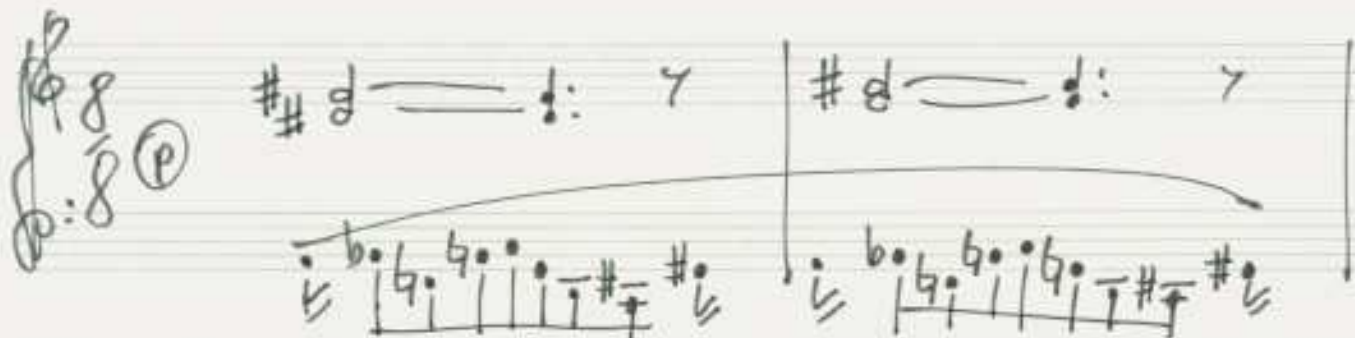
Handwritten musical notation for the third system. The treble clef staff contains notes: $\dot{1}$, $\dot{2}$, $\dot{3}$, $\dot{4}$, $\sharp\dot{5}$. The bass clef staff contains notes: $\sharp\dot{1}$, $\dot{2}$, $\dot{3}$, $\dot{4}$. A circled 'D.C.' is written to the right of the double bar line, with the text 'dann weiter' below it. A large slur covers the system.

Handwritten musical notation for the fourth system. The treble clef staff contains notes: $\dot{1}$, $\dot{2}$, $\dot{3}$, $\dot{4}$. The bass clef staff contains notes: $\sharp\dot{1}$, $\dot{2}$, $\dot{3}$, $\dot{4}$. A circled 'p' is written in the first measure of the treble staff. A large slur covers the system.

Lied der Sternenschwärme

(F) + [G]

lento



(letzte + mit)

passionata (drümpend)

Handwritten musical notation for the first system. The right hand (treble clef) has a circled sharp sign (#) and a chord of G major (G-B-D) with a fermata. The left hand (bass clef) has a circled sharp sign (#) and a melodic line with slurs and ties.

Handwritten musical notation for the second system. The right hand (treble clef) has a sharp sign (#) and a chord of G major (G-B-D) with a fermata. The left hand (bass clef) has a sharp sign (#) and a melodic line with slurs and ties.

(poco rit)

Handwritten musical notation for the third system. The right hand (treble clef) has a sharp sign (#) and a chord of G major (G-B-D) with a fermata. The left hand (bass clef) has a sharp sign (#) and a melodic line with slurs and ties. The system ends with a double bar line and the instruction "D.C. al fine".

Handwritten musical notation for the fourth system. The right hand (treble clef) has a sharp sign (#) and a chord of G major (G-B-D) with a fermata. The left hand (bass clef) has a sharp sign (#) and a melodic line with slurs and ties.

6

sehr bewegt (Prestissimo)

Handwritten musical notation for the first system. It consists of two staves: a treble clef staff and a bass clef staff. The time signature is 3/4. A circled 'f' indicates a forte dynamic. A slur covers three measures. The treble staff contains three chords, each with a flat sign above it. The bass staff contains a sequence of notes with accents: a flat note, a flat note, a flat note, a flat note, and a flat note.

Handwritten musical notation for the second system. It consists of two staves: a treble clef staff and a bass clef staff. A slur covers three measures. The treble staff contains three chords. The bass staff contains a sequence of notes with accents: a flat note, a flat note, a flat note, and a flat note.

Handwritten musical notation for the third system. It consists of two staves: a treble clef staff and a bass clef staff. A slur covers three measures. The treble staff contains three chords. The bass staff contains a sequence of notes with accents: a flat note, a flat note, a flat note, and a flat note.

solis march

Handwritten musical notation for the first system. It features a treble clef with a '1' above it and a bass clef with 'G.P.' below it. A bracket on the left indicates a first ending. The music consists of three measures with notes and accidentals: $\text{g} \cdot \text{b} \text{d}$, $\text{b} \text{d} \text{g} \cdot \text{b} \text{d}$, and $\text{d} \text{g} \cdot \text{b}$. The bass line has chords: $\text{b} \text{d}$, $\text{b} \text{d}$, and d .

Handwritten musical notation for the second system. It features a treble clef and a bass clef. The music consists of three measures with notes and accidentals: $\text{d} \cdot \text{\#} \text{d}$, $\text{\#} \text{d} \text{d}$, and $\text{\#} \text{d} \text{\#} \text{d}$. The bass line has chords: $\text{b} \text{d}$, $\text{b} \text{d}$, and d .

Handwritten musical notation for the third system. It features a treble clef with a circled 'III' and a bass clef. Above the staff are annotations: 'breit' in a circle, '(rit) (pesante)' with a downward arrow, and '(rit) (pesante)' with an upward arrow. The music consists of five measures with notes and accidentals: $\text{\#} \text{d} \text{g}$, $\text{\#} \text{g}$, $\text{\#} \text{g}$, $\text{\#} \text{g}$, and $\text{\#} \text{g}$. The bass line has chords: $\text{\#} \text{d} \text{g}$, $\text{\#} \text{d} \text{g}$, $\text{\#} \text{g}$, $\text{\#} \text{g}$, and $\text{\#} \text{g}$. A large circle is drawn below the staff.

(H)

Die Liebenden

Leute (r) (aus 4 Schlägen)

12
16 (P)

(rit)

Von enttrunkenen Mädchen

(i)

breit (frei wie eine Kadenz)

subito (accel.) →

(rit)

breit

(git)

rubato - (acc.) →

Handwritten musical notation for guitar, featuring two staves with chords and melodic lines. The notation includes fingerings and dynamic markings.

breit

Handwritten musical notation for a section labeled "breit", showing two staves with notes and rests. The notation includes dynamic markings and phrasing slurs.

(frei) Presto (frei festhalten)

Handwritten musical notation for a section labeled "(frei) Presto (frei festhalten)", featuring a single staff with a complex, rapid melodic line. The notation includes dynamic markings and an "accel." marking.

lunge

Handwritten musical notation for a section labeled "lunge", showing two staves with notes and rests. The notation includes dynamic markings and a "Fine" sign.

(3+ | 1+ pp
2+ ff
3+ pp)

Presto

Handwritten musical score for the first system. It consists of two staves: a treble clef staff and a bass clef staff. The treble staff begins with a key signature of one sharp (F#) and a common time signature (C). The first measure contains a chord with notes F#4, A4, and C5. The second measure contains a chord with notes B4, D5, and F#5. The third measure contains a chord with notes Bb4, D5, and F5. The fourth measure contains a chord with notes C5, E5, and G5. The bass staff begins with a key signature of one flat (Bb) and a common time signature (C). The first measure contains a chord with notes Bb3, D4, and F4. The second measure contains a chord with notes C4, E4, and G4. The third measure contains a chord with notes Bb3, D4, and F4. The fourth measure contains a chord with notes C4, E4, and G4. The system is marked with a circled 'pp' and the word 'legg.' below the first measure. A large oval bracket encompasses the entire system.

Handwritten musical score for the second system. It consists of two staves: a treble clef staff and a bass clef staff. The treble staff begins with a key signature of one flat (Bb) and a common time signature (C). The first measure contains a chord with notes Bb4, D5, and F5. The second measure contains a chord with notes C5, E5, and G5. The third measure contains a chord with notes Bb4, D5, and F5. The fourth measure contains a chord with notes C5, E5, and G5. The bass staff begins with a key signature of one flat (Bb) and a common time signature (C). The first measure contains a chord with notes Bb3, D4, and F4. The second measure contains a chord with notes C4, E4, and G4. The third measure contains a chord with notes Bb3, D4, and F4. The fourth measure contains a chord with notes C4, E4, and G4. A large oval bracket encompasses the entire system.

Handwritten musical score for the third system. It consists of two staves: a treble clef staff and a bass clef staff. The treble staff begins with a key signature of one sharp (F#) and a common time signature (C). The first measure contains a chord with notes F#4, A4, and C5. The second measure contains a chord with notes B4, D5, and F#5. The third measure contains a chord with notes Bb4, D5, and F5. The fourth measure contains a chord with notes C5, E5, and G5. The bass staff begins with a key signature of one flat (Bb) and a common time signature (C). The first measure contains a chord with notes Bb3, D4, and F4. The second measure contains a chord with notes C4, E4, and G4. The third measure contains a chord with notes Bb3, D4, and F4. The fourth measure contains a chord with notes C4, E4, and G4. A large oval bracket encompasses the entire system.

Handwritten musical notation for the first system, consisting of two staves. The top staff contains two chords in the first measure, followed by a rest in the second measure, and two chords in the third measure. The bottom staff contains two chords in the first measure, followed by a rest in the second measure, and two chords in the third measure. The system is enclosed in a large oval.

Handwritten musical notation for the second system, consisting of two staves. The top staff contains two chords in the first measure, followed by a rest in the second measure, and two chords in the third measure. The bottom staff contains two eighth notes in the first measure, followed by a rest in the second measure, and two eighth notes in the third measure. The system is enclosed in a large oval.

Handwritten musical notation for the third system, consisting of two staves. The top staff contains two chords in the first measure, followed by a rest in the second measure, and two chords in the third measure. The bottom staff contains two chords in the first measure, followed by a rest in the second measure, and two eighth notes in the third measure. The system is enclosed in a large oval.

rit.

Handwritten musical notation for the fourth system, consisting of two staves. The top staff has a 6/4 time signature and a circled 'p' dynamic marking. The bottom staff contains a single note with a fermata above it. To the right of the system, the text "D.C. al Fine" is written vertically.

Das Lied vom Rauch

3

Lento (misteriös) sehr langsam (♩)

(b)

(frei)

(b)

Fin

(K) Kohlen für Mike

Allegro con brio

Handwritten musical notation for the first system of 'Kohlen für Mike'. It features a treble clef with a 3/4 time signature and a key signature of one sharp (F#). The melody consists of three measures: the first has a triplet of eighth notes, the second has a quarter note followed by a triplet of eighth notes with a '(H)' above it, and the third has a quarter note followed by a triplet of eighth notes. The bass line consists of three measures of chords: the first is a triad of G4, B4, D5; the second is a triad of G4, B4, D5; and the third is a triad of G4, B4, D5.

Handwritten musical notation for the second system of 'Kohlen für Mike'. The treble clef melody continues with three measures: the first has a quarter note followed by a triplet of eighth notes, the second has a quarter note followed by a triplet of eighth notes, and the third has a quarter note followed by a triplet of eighth notes. The bass line consists of three measures of chords: the first is a triad of G4, B4, D5; the second is a triad of G4, B4, D5; and the third is a triad of G4, B4, D5.

Handwritten musical notation for the third system of 'Kohlen für Mike'. The treble clef melody continues with three measures: the first has a quarter note followed by a triplet of eighth notes, the second has a quarter note followed by a triplet of eighth notes, and the third has a quarter note followed by a triplet of eighth notes. The bass line consists of three measures of chords: the first is a triad of G4, B4, D5; the second is a triad of G4, B4, D5; and the third is a triad of G4, B4, D5.

(frei - freie Kadenz)

pesante

Tempo

pesante — accel

Tempo

ADAGIO

AN DIE



NACHGEBORENEN

(alles sehr frei) Fantasie -

breit

(frei)

accel. — rit)

breit

(frei)

Presto (erregt - rubato)

(mit pesante)

~~Wieder~~ sehnsüchtig

Handwritten musical notation for the first system. It consists of two staves. The top staff is in treble clef with a 4/4 time signature and a circled 'p' dynamic marking. The bottom staff is in bass clef. The music is written in a shorthand style with notes and accidentals. A slur covers the first two measures of the top staff.

Handwritten musical notation for the second system. It consists of two staves. The top staff is in treble clef. The bottom staff is in bass clef. A circled 'mf' dynamic marking is present in the second measure of the bottom staff. A slur covers the first two measures of the top staff.

Handwritten musical notation for the third system. It consists of two staves. The top staff is in treble clef. The bottom staff is in bass clef. A slur covers the first two measures of the top staff.

Handwritten musical notation for the fourth system. It consists of two staves. The top staff is in treble clef. The bottom staff is in bass clef. A slur covers the first two measures of the top staff.

Handwritten musical notation for the fifth system. It consists of two staves. The top staff is in treble clef. The bottom staff is in bass clef. A slur covers the first two measures of the top staff.

immer breiter werden →

Handwritten musical notation for the first system. The treble staff contains notes: $\#d$, b^b , g , $\#d$, b^b , b^b , $\#d$, b^b , b^b , d , $\#i$, i . The bass staff contains notes: b^b , o , o , $\#i$, $\#i$, g , $\#o$. There are dynamic markings γ and γ above the treble staff.

Handwritten musical notation for the second system. The treble staff contains notes: $\#i$, b^b , d , b^b , $\#d$, $\#i$, $\#i$, $\#i$. The bass staff contains notes: g , b^b , g , b^b , $\#g$, $\#g$, i , b^b , g , b^b , $\#g$, $\#g$. A circled f is written in the treble staff.

Handwritten musical notation for the third system. The treble staff contains notes: $\#i$, $\#i$, $\#i$, $\#i$, b^b , d , b^b , b^b , b^b , d , d , b^b . The bass staff contains notes: d , $\#g$, $\#g$, b^b , b^b , b^b , b^b , g , d , b^b . A circled ff is written in the treble staff.

Handwritten musical notation for the fourth system. The treble staff contains notes: $\#d$, $\#d$, d , $\#d$, $\#d$, $\#o$, b^b , $\#d$. The bass staff contains notes: $\#o$, $\#d$, b^b , b^b , b^b , g , b^b , b^b , $\#g$. There are dynamic markings γ and γ above the treble staff.

Handwritten musical notation for the fifth system. The treble staff contains notes: b^b , d , b^b , $\#d$, $\#d$, b^b , $\#d$, $\#o$. The bass staff contains notes: b^b , o , o , o , o , g , g , $\#g$, $\#o$. There are dynamic markings γ and γ above the treble staff.

fast →
 abbreven

M.

breit (mit ---)

Handwritten musical notation for the first system. It features two staves in 4/4 time with a key signature of one sharp (F#). The notation includes notes with accidentals (sharps and naturals) and dynamic markings like mf and f . Brackets and slurs are used to group notes across measures.

Handwritten musical notation for the second system, continuing the piece in the same key and time signature. It includes notes with accidentals and dynamic markings, with some notes written as whole notes.

Handwritten musical notation for the third system. The left staff shows notes with accidentals and dynamic markings. The right staff is marked "Fine" and contains a large, decorative flourish.