

Fantasie für Orgel N. 1

April 1980

über (Betrachtet ihn in Schmerzen)

Adolf Scherbaum

Dem Gedenken an meinem  
liebsten Vater - der  
vor kurzem verstorben ist.

Sein Sohn Adolf

breit (Mod. (♭) nicht schleppend)

Handwritten musical score for the first system. It consists of four staves: a treble clef staff, two bass clef staves, and a third bass clef staff. The treble staff contains two measures of eighth-note chords:  $b^b$  and  $b^b$ . The first bass staff has a whole note chord  $g$  with a slur over it, and a dynamic marking  $fff$ . The second bass staff has a triplet of eighth notes  $g$ ,  $a$ ,  $b$  with a dynamic marking  $fff$ . The third bass staff has a whole note chord  $g$  with a dynamic marking  $fff$ . The system concludes with a double bar line and repeat signs.

Handwritten musical score for the second system. It consists of four staves: a treble clef staff, two bass clef staves, and a third bass clef staff. The treble staff contains two measures of eighth-note chords:  $b^b$  and  $b^b$ . The first bass staff has a whole note chord  $g$  with a slur over it, and a dynamic marking  $fff$ . The second bass staff has a triplet of eighth notes  $g$ ,  $a$ ,  $b$  with a dynamic marking  $fff$ . The third bass staff has a whole note chord  $g$  with a dynamic marking  $fff$ . The system concludes with a double bar line and repeat signs.

Handwritten musical score for the third system. It consists of four staves: a treble clef staff, two bass clef staves, and a third bass clef staff. The treble staff contains two measures of eighth-note chords:  $b^b$  and  $b^b$ . The first bass staff has a whole note chord  $g$  with a slur over it, and a dynamic marking  $fff$ . The second bass staff has a triplet of eighth notes  $g$ ,  $a$ ,  $b$  with a dynamic marking  $fff$ . The third bass staff has a whole note chord  $g$  with a dynamic marking  $fff$ . The system concludes with a double bar line and repeat signs.

Handwritten musical score for the first system. It consists of three staves: treble clef (top), alto clef (middle), and bass clef (bottom). The treble staff contains a melodic line with notes and slurs. The alto staff has a single note with a dynamic marking of *pp* and a slur. The bass staff has a single note with a dynamic marking of *q*. The system is enclosed in a large bracket.

Handwritten musical score for the second system. It consists of three staves: treble clef (top), alto clef (middle), and bass clef (bottom). The treble staff contains a melodic line with notes and slurs. The alto staff has a single note with a dynamic marking of *pp* and a slur. The bass staff has a single note with a dynamic marking of *q*. The system is enclosed in a large bracket.

Handwritten musical score for the third system. It consists of three staves: treble clef (top), alto clef (middle), and bass clef (bottom). The treble staff contains a melodic line with notes and slurs. The alto staff has a single note with a dynamic marking of *q* and a slur. The bass staff has a single note with a dynamic marking of *q*. The system is enclosed in a large bracket.

breit

Handwritten musical score for the first system. It consists of three measures. The first measure has a treble clef and a bass clef. The treble clef part starts with a quarter rest, followed by a quarter note G4 with a sharp sign, a quarter note A4 with a flat sign, and a quarter note B4 with a flat sign. The bass clef part has a quarter note G3 with a flat sign. The second measure has a treble clef part with a quarter note B4 with a flat sign, a quarter note C5 with a flat sign, a quarter note D5 with a flat sign, and a quarter note E5 with a sharp sign. The bass clef part has a quarter note G3 with a flat sign. The third measure has a treble clef part with a quarter note G4 with a flat sign, a quarter note A4 with a sharp sign, and a quarter note B4 with a flat sign. The bass clef part has a quarter note G3 with a flat sign.

Handwritten musical score for the second system. It consists of three measures. The first measure has a treble clef part with a quarter note G4 with a sharp sign, a quarter note A4 with a sharp sign, and a quarter note B4 with a flat sign. The bass clef part has a quarter note G3 with a flat sign. The second measure has a treble clef part with a quarter note B4 with a flat sign, a quarter note C5 with a flat sign, a quarter note D5 with a flat sign, and a quarter note E5 with a sharp sign. The bass clef part has a quarter note G3 with a flat sign. The third measure has a treble clef part with a quarter note G4 with a sharp sign, a quarter note A4 with a sharp sign, and a quarter note B4 with a flat sign. The bass clef part has a quarter note G3 with a flat sign.

rit. ----->

Handwritten musical score for the third system, marked 'rit.' with a dashed line and an arrow. It consists of three measures. The first measure has a treble clef part with a quarter note G4 with a flat sign, a quarter note A4 with a flat sign, and a quarter note B4 with a flat sign. The bass clef part has a quarter note G3 with a flat sign. The second measure has a treble clef part with a quarter note G4 with a flat sign, a quarter note A4 with a flat sign, and a quarter note B4 with a flat sign. The bass clef part has a quarter note G3 with a flat sign. The third measure has a treble clef part with a quarter note G4 with a flat sign, a quarter note A4 with a flat sign, and a quarter note B4 with a flat sign. The bass clef part has a quarter note G3 with a flat sign.

langsam (ruhig /  $\text{♩}$ )

Handwritten musical notation for the first system, featuring a treble clef, a 4/4 time signature, and a key signature of one flat. The music consists of a melody in the treble staff and a bass line in the bass staff. The melody starts with a quarter rest, followed by a quarter note G4, and then a series of eighth notes: A4, B4, C5, B4, A4. The bass line consists of a single quarter note D4. The system ends with a double bar line.

Handwritten musical notation for the second system, continuing the melody and bass line from the first system. The melody continues with eighth notes: G4, F4, E4, D4, C4. The bass line continues with quarter notes: D4, G3, F3, E3, D3. The system ends with a double bar line.

Handwritten musical notation for the third system, continuing the melody and bass line. The melody features a series of eighth notes: B3, A3, G3, F3, E3, D3, C3. The bass line continues with quarter notes: D3, G2, F2, E2, D2. The system ends with a double bar line.

Handwritten musical notation for the fourth system, continuing the melody and bass line. The melody features a series of eighth notes: B2, A2, G2, F2, E2, D2, C2. The bass line continues with quarter notes: D2, G1, F1, E1, D1. The system ends with a double bar line.

Handwritten musical notation for the first system, featuring a treble clef, a key signature of one flat (B-flat), and a 2/4 time signature. The melody consists of eighth notes with slurs, and the bass line has quarter notes with accidentals.

(poco rit)

Handwritten musical notation for the second system, continuing the piece with similar notation and a key signature change to two flats (B-flat and E-flat).

Handwritten musical notation for the third system, including a tempo marking "grob. rit" and a double bar line with repeat dots. The notation includes a treble clef, a key signature of two flats, and a 2/4 time signature.

FPAG10

Handwritten musical notation for the first system. The top staff is in treble clef and contains a circled 'di' followed by notes G4, A4, B4, and C5. The bottom staff is in bass clef and contains notes G2, A2, B2, and C3. The key signature has one flat (Bb) and the time signature is 4/4.

Handwritten musical notation for the second system. The top staff is in treble clef and contains notes G4, A4, B4, C5, D5, E5, F5, and G5. The bottom staff is in bass clef and contains notes G2, A2, B2, C3, D3, E3, F3, and G3. The key signature has one flat (Bb) and the time signature is 4/4.

Handwritten musical notation for the third system. The top staff is in treble clef and contains notes G4, A4, B4, C5, D5, E5, F5, and G5. The bottom staff is in bass clef and contains notes G2, A2, B2, C3, D3, E3, F3, and G3. The key signature has one flat (Bb) and the time signature is 4/4.

Handwritten musical notation for the fourth system. The top staff is in treble clef and contains notes G4, A4, B4, C5, D5, E5, F5, and G5. The bottom staff is in bass clef and contains notes G2, A2, B2, C3, D3, E3, F3, and G3. The key signature has one flat (Bb) and the time signature is 4/4.

Handwritten musical notation for the first system. The right hand part consists of four measures of sixteenth-note chords, while the left hand part is a simple bass line with a few notes.

Handwritten musical notation for the second system, continuing the piece with similar sixteenth-note chordal patterns in the right hand and a steady bass line in the left hand.

Handwritten musical notation for the third system, which concludes with a "Cresc." marking and a final cadence. The right hand part shows a transition to a more complex chordal structure.



(narrativs treibend)

overgh(frei) ♩

sehr bewegt (brevemente) (♩)

Handwritten musical notation for the first system, featuring a treble and bass clef with a key signature of one flat. The treble staff contains two measures of chords, and the bass staff contains two measures of chords with a fermata over the first measure.

Handwritten musical notation for the second system, featuring a treble and bass clef with a key signature of one flat. The treble staff contains two measures of chords, and the bass staff contains two measures of chords with a fermata over the first measure.

Handwritten musical notation for the third system, featuring a treble and bass clef with a key signature of one flat. The treble staff contains two measures of chords, and the bass staff contains two measures of chords with a fermata over the first measure.

Handwritten musical notation for the fourth system, featuring a treble and bass clef with a key signature of one flat. The treble staff contains two measures of chords, and the bass staff contains two measures of chords with a fermata over the first measure.

(Zwei gestaltend)

Handwritten musical notation for the first system. The treble clef part begins with a quarter note G4, followed by a quarter note A4 with a sharp sign, and a quarter note B4 with a flat sign. Above the first two notes are accents (^). The bass clef part begins with a quarter note F4 with a flat sign, followed by a quarter note G4 with a flat sign, and a quarter note A4 with a flat sign. The system continues with rests in the treble and a sequence of notes in the bass: B4 with a flat, C5 with a flat, D5 with a flat, E5 with a flat, F5 with a flat, G5 with a flat, A5 with a flat, and B5 with a flat.

Handwritten musical notation for the second system. The treble clef part begins with a quarter note B4 with a flat sign, followed by a quarter note C5 with a flat sign, and a quarter note D5 with a flat sign. Above the first two notes are accents (^). The bass clef part begins with a quarter note E5 with a flat sign, followed by a quarter note F5 with a flat sign, and a quarter note G5 with a flat sign. The system continues with rests in the treble and a sequence of notes in the bass: A5 with a flat, B5 with a flat, C6 with a flat, D6 with a flat, E6 with a flat, F6 with a flat, G6 with a flat, and A6 with a flat.

Handwritten musical notation for the third system. The treble clef part begins with a quarter note B4 with a flat sign, followed by a quarter note C5 with a flat sign, and a quarter note D5 with a flat sign. Above the first two notes are accents (^). The bass clef part begins with a quarter note E5 with a flat sign, followed by a quarter note F5 with a flat sign, and a quarter note G5 with a flat sign. The system continues with rests in the treble and a sequence of notes in the bass: A5 with a flat, B5 with a flat, C6 with a flat, D6 with a flat, E6 with a flat, F6 with a flat, G6 with a flat, and A6 with a flat.

(2tet poco rit)  
3tet " "

Handwritten musical notation for the fourth system. The treble clef part begins with a quarter note G4 with a sharp sign, followed by a quarter note A4 with a sharp sign, and a quarter note B4 with a sharp sign. Above the first two notes are accents (^). The bass clef part begins with a quarter note F4 with a flat sign, followed by a quarter note G4 with a flat sign, and a quarter note A4 with a flat sign. The system continues with rests in the treble and a sequence of notes in the bass: B4 with a flat, C5 with a flat, D5 with a flat, E5 with a flat, F5 with a flat, G5 with a flat, A5 with a flat, and B5 with a flat. The system ends with a double bar line and a wavy line.

frei (Kantate)

großes mit...

lunga

sehr langsam und verhalten

6. p.

*pp* *Be* = trachtet ihn in Schmerzen wie

er sein Blut verzehret sieht wie aus seinem Herzen der

letzte Tropfen fließt Er nahm hinweg die Sünden er

Handwritten musical notation for the first system. The upper staff is in treble clef with a key signature of one flat (B-flat). The lower staff is in bass clef. The lyrics are: "trugen trug all unsre - Schuld bei Gott laßt er uns".

Handwritten musical notation for the second system. The upper staff is in treble clef with a key signature of one flat. The lower staff is in bass clef. The lyrics are: "finden den Frieden den Frieden den Frieden".

Org. mit...

Handwritten musical notation for the third system, labeled "Org. mit...". The upper staff is in treble clef with a key signature of one flat. The lower staff is in bass clef. The lyrics are: "Frieden Frieden Frie".

Handwritten musical notation for the fourth system. The upper staff is in treble clef with a key signature of one flat. The lower staff is in bass clef. The lyrics are: "den -". To the right of the notation, there is a circled word "Friede" and the word "Lunga" written above it.

Fantasie für Orgel (N2)

April 1980

über (Betrachtet ihn in Schmerzen)

Adolf Schreier



breit ausladend (♩)

Handwritten musical score for the first system. It consists of three staves: Treble (top), Alto (middle), and Bass (bottom). The Treble staff begins with a treble clef, a 4/4 time signature, and a forte (fff) dynamic marking. A key signature change to one flat (B-flat) is indicated by a 'b' above the staff. The music features a wide interval in the first measure, followed by eighth-note patterns in the second and third measures, and a final measure with a B-flat. The Alto and Bass staves contain rests and notes, with a '9' written below the Bass staff in each measure.

Handwritten musical score for the second system. It continues with three staves. The Treble staff has a forte (f) dynamic marking. The music continues with eighth-note patterns and rests. The Alto and Bass staves have rests in the first measure, followed by notes in the second and third measures. A '9' is written below the Bass staff in each measure.

Handwritten musical score for the third system. It consists of three staves. The Treble staff has a forte (f) dynamic marking. The music concludes with a double bar line and repeat dots. The final measure shows a key signature change to one sharp (F-sharp) and a final note. The Alto and Bass staves have rests in the first measure, followed by notes in the second and third measures. A '9' is written below the Bass staff in each measure.

Handwritten musical score for the first system. It consists of three staves. The top staff is in treble clef and contains a melodic line with notes and accidentals (sharps and flats) across four measures. The middle and bottom staves are in bass clef and contain a bass line with notes and fingerings (47 and 43) across the same four measures. A large slur covers the entire system.

Handwritten musical score for the second system. It consists of three staves. The top staff is in treble clef and contains a melodic line with notes and accidentals across four measures. The middle and bottom staves are in bass clef and contain a bass line with notes and fingerings across the same four measures. A large slur covers the entire system.

Handwritten musical score for the third system. It consists of three staves. The top staff is in treble clef and contains a melodic line with notes and accidentals across four measures. The middle and bottom staves are in bass clef and contain a bass line with notes and fingerings across the same four measures. A large slur covers the entire system.

Handwritten musical score for the first system. The treble clef staff contains a melody with a slur over four measures: D, F#, Bb, D. The bass clef staff contains a bass line with notes G, F#, E, D. The first measure of the bass line includes a 5-finger fingering.

Handwritten musical score for the second system. The treble clef staff contains a melody with a slur over four measures: Bb, G, F#, E. The bass clef staff contains a bass line with notes G, F#, E, D. The first measure of the bass line includes a 5-finger fingering. The word "(poco rit)" is written above the staff. The final measure of the melody has a fermata and a double bar line.

(frei (Kadenzartig))

(♩)

Ad libitum

steigern

Ad libitum

Ad libitum (♩) bewegte (♩) frei

Ad libitum

(quit...)

bewegt

poco (rit)

tempo (rubato)

Handwritten musical notation for the first system, showing two measures of music. The first measure has a sharp sign above the first note, and the second measure has a flat sign above the first note. Below the notes are handwritten labels 'b9' and 'b9' with a slur over them.

Handwritten musical notation for the second system, showing two measures of music. The first measure has a sharp sign above the first note, and the second measure has a flat sign above the first note. Below the notes are handwritten labels 'P' and 'P' with a slur over them.

Handwritten musical notation for the third system, showing two measures of music. The first measure has a sharp sign above the first note, and the second measure has a flat sign above the first note. Below the notes are handwritten labels 'P' and 'P' with a slur over them.

breit

(mit...)

Handwritten musical score for the first system. It consists of a grand staff with three staves: treble, alto, and bass clefs. The music is in 6/4 time. The first staff has a treble clef and a key signature of one sharp (F#). The second staff has an alto clef and a key signature of one sharp. The third staff has a bass clef and a key signature of one sharp. The music includes various notes, rests, and accidentals, with a large slur over the first two staves.

Handwritten musical score for the second system. It consists of a grand staff with three staves: treble, alto, and bass clefs. The music is in 6/4 time. The first staff has a treble clef and a key signature of one sharp. The second staff has an alto clef and a key signature of one sharp. The third staff has a bass clef and a key signature of one sharp. The music includes various notes, rests, and accidentals, with a large slur over the first two staves.

Handwritten musical score for the third system. It consists of a grand staff with three staves: treble, alto, and bass clefs. The music is in 6/4 time. The first staff has a treble clef and a key signature of one sharp. The second staff has an alto clef and a key signature of one sharp. The third staff has a bass clef and a key signature of one sharp. The music includes various notes, rests, and accidentals, with a large slur over the first two staves.



rit-...

Handwritten musical score for three staves. The top staff is in treble clef with a 9-measure phrase. The middle and bottom staves are in bass clef. The music features various ornaments and slurs.

Adagio (sehr schlicht (♩))

Handwritten musical score for two staves. The top staff is in treble clef with a 9-measure phrase. The bottom staff is in bass clef. The music features a circled 'P' and various ornaments.

Handwritten musical score for two staves. The top staff is in treble clef with a 9-measure phrase. The bottom staff is in bass clef. The music features various ornaments and slurs.

Handwritten musical notation on a five-line staff. The system begins with a treble clef and a common time signature (C). The music consists of several measures with notes, rests, and dynamic markings. A large slur covers the first two measures. A double bar line with repeat dots is present. The notation includes various note values and accidentals.

Handwritten musical notation on a five-line staff. The system continues with notes and rests. A large slur spans across several measures. There are dynamic markings and accidentals throughout the system.

Handwritten musical notation on a five-line staff. The system includes notes, rests, and dynamic markings. A double bar line with repeat dots is followed by the handwritten text "dal" and "al" with a fermata symbol below it.

Handwritten musical notation on a five-line staff. The system starts with a treble clef and a common time signature (C). It includes notes, rests, and dynamic markings. The text "(poco rit)" is written above the staff. The system concludes with a double bar line and repeat dots.

Adagio

Handwritten musical score for Adagio. The first staff is in treble clef with a circled 'A' and the dynamic 'pp'. The second staff is in bass clef. The music consists of two measures. The first measure has notes G4, A4, B4, C5 in the treble and G3, A3, B3, C4 in the bass, with a slur over the treble notes and a slur over the bass notes. The second measure has notes B4, C5, D5, E5 in the treble and B3, C4, D4, E4 in the bass, with a slur over the treble notes and a slur over the bass notes. There are various accidentals and markings throughout.

immer erregter (bewegter)

Handwritten musical score showing a transition. The first staff is in treble clef with a circled 'A'. The second staff is in bass clef. The first measure shows a simple chord structure with notes G4, A4, B4, C5 in the treble and G3, A3, B3, C4 in the bass. An arrow points to the second measure, which features a more complex, rhythmic passage with many notes and accidentals in both staves.

Quelle:

Handwritten musical score for the 'Quelle' section. The first staff is in treble clef with a circled 'A'. The second staff is in bass clef. The music consists of two measures. The first measure has a complex melodic line in the treble staff with many notes and accidentals, and a simpler line in the bass staff. The second measure continues the melodic line in the treble staff.

Handwritten musical score for the final section. The first staff is in treble clef with a circled 'A'. The second staff is in bass clef. The music consists of two measures. The first measure has a complex melodic line in the treble staff with many notes and accidentals, and a simpler line in the bass staff. The second measure continues the melodic line in the treble staff.

breuste (1) ad. lib. (1)

modo (accel).

Handwritten musical score for the first system, labeled "modo (accel)". The score is written on a grand staff with a treble clef and a key signature of one sharp (F#). The right hand part features a melodic line with a slur over the first two measures and a fermata over the last two. The left hand part features a rhythmic accompaniment of eighth notes. The piece ends with a double bar line.

(poco rit)

Handwritten musical score for the second system, labeled "(poco rit)". The score is written on a grand staff with a treble clef and a key signature of one sharp (F#). The right hand part features a melodic line with a slur over the first two measures and a fermata over the last two. The left hand part features a rhythmic accompaniment of eighth notes. The piece ends with a double bar line.

sehr rasch (rubato)

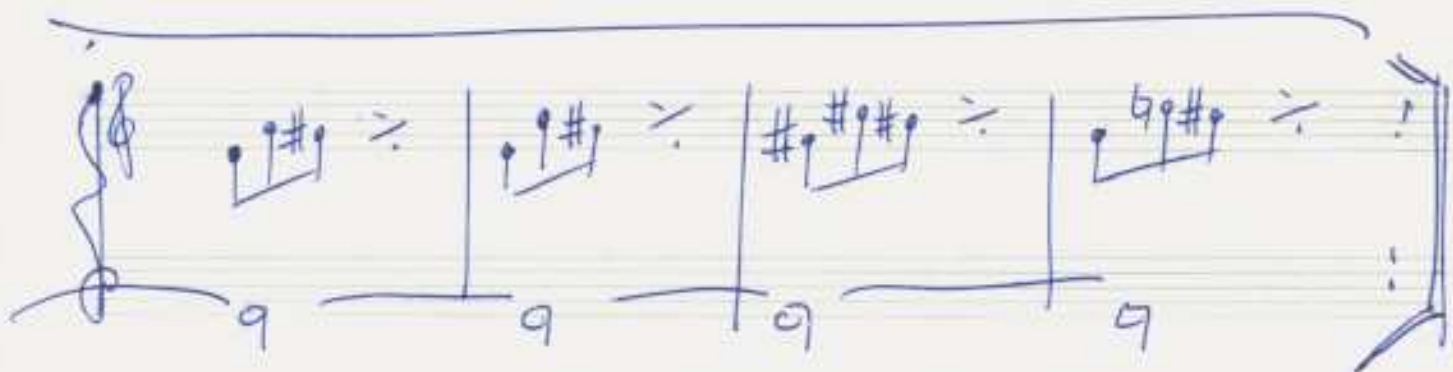
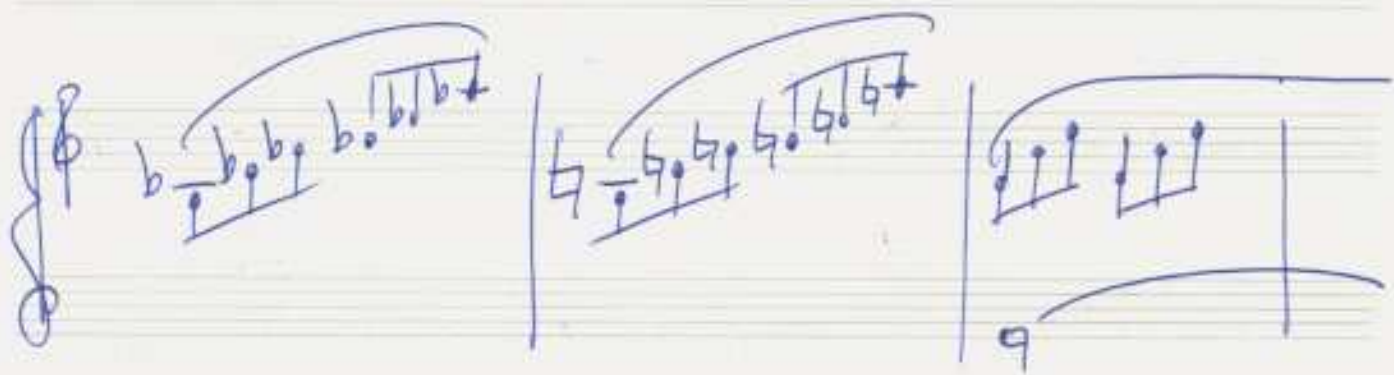
Handwritten musical score for the third system, labeled "sehr rasch (rubato)". The score is written on a grand staff with a treble clef and a key signature of one sharp (F#). The time signature is 2/4. The right hand part features a melodic line with a slur over the first two measures and a fermata over the last two. The left hand part features a rhythmic accompaniment of eighth notes. The piece ends with a double bar line.

Handwritten musical notation for the first system, featuring a treble and bass clef with a four-measure phrase. The treble staff contains notes G4, Bb4, G4, and D5, with a slur over the last two. The bass staff contains whole rests for the first two measures and notes G3, Bb3, G3, and F#3 for the last two, with a slur over the last two.

Handwritten musical notation for the second system, similar to the first. The treble staff contains notes G4, Bb4, G4, and D5. The bass staff contains whole rests for the first two measures and notes G3, Bb3, G3, and F#3 for the last two.

Handwritten musical notation for the third system, consisting of three measures. Each measure has a slur over two notes. Measure 1: G#4, A#4. Measure 2: G#4, A#4. Measure 3: G#4, A#4.

Handwritten musical notation for the fourth system, consisting of three measures. Each measure has a slur over two notes. Measure 1: G#4, A#4. Measure 2: Gb4, Ab4. Measure 3: G4, A4.



Handwritten musical notation for the first system. The treble clef part consists of two measures: the first measure has a half note G4 with a sharp sign, and the second measure has a half note A4 with a sharp sign. The bass clef part also has two measures: the first measure has a half note G3 with a sharp sign, and the second measure has a half note F3 with a sharp sign. Both parts are connected by a slur across the two measures.

Handwritten musical notation for the second system. The treble clef part consists of two measures: the first measure has a half note G4 with a sharp sign, and the second measure has a half note A4 with a sharp sign. The bass clef part also has two measures: the first measure has a half note G3 with a flat sign, and the second measure has a half note F3 with a flat sign. Both parts are connected by a slur across the two measures.

Handwritten musical notation for the third system. The treble clef part consists of two measures: the first measure has a half note G4 with a flat sign, and the second measure has a half note A4 with a flat sign. The bass clef part also has two measures: the first measure has a half note G3 with a flat sign, and the second measure has a half note F3 with a flat sign. Both parts are connected by a slur across the two measures.

Handwritten musical notation for the fourth system. The treble clef part consists of two measures: the first measure has a half note G4 with a flat sign, and the second measure has a half note A4 with a flat sign. The bass clef part also has two measures: the first measure has a half note G3 with a sharp sign, and the second measure has a half note F3 with a sharp sign. Both parts are connected by a slur across the two measures.



frei gestalten

*legato*

frei (alla Handlung)  
(cantata (frei))

Handwritten musical notation for the first system, featuring a treble clef and a common time signature. A large bracket spans across the staff. The notation includes a 6/4 time signature, a 3/4 time signature, and a 00: time signature. The notes are written in a shorthand style with stems and flags, including accidentals like flats and sharps.

Handwritten musical notation for the second system, featuring a treble clef and a common time signature. A large bracket spans across the staff. The notation includes a 3/4 time signature and a 4/4 time signature. The notes are written in a shorthand style with stems and flags, including accidentals like flats and sharps.

Handwritten musical notation for the third system, featuring a treble clef and a common time signature. A large bracket spans across the staff. The notation includes a 4/4 time signature and a 3/4 time signature. The notes are written in a shorthand style with stems and flags, including accidentals like flats and sharps.

Handwritten musical notation for the fourth system, featuring a treble clef and a common time signature. A large bracket spans across the staff. The notation includes a 4/4 time signature and a 3/4 time signature. The notes are written in a shorthand style with stems and flags, including accidentals like flats and sharps.

(2te + gut)

lunga

S.P.

sehr ruhig fließend

Handwritten musical notation for the first system. It features a treble clef and a bass clef. The time signature is 4/8. A circled 'p' indicates a piano dynamic. The music consists of two staves. The right hand has chords with stems pointing up, and the left hand has chords with stems pointing down. There are slurs over the right-hand chords and a fermata over the first measure of the right hand.

Handwritten musical notation for the second system. It continues the piece with similar chordal and melodic structures. The right hand has chords with stems pointing up, and the left hand has chords with stems pointing down. There are slurs over the right-hand chords and a fermata over the first measure of the right hand.

Handwritten musical notation for the third system. It concludes the piece with similar chordal and melodic structures. The right hand has chords with stems pointing up, and the left hand has chords with stems pointing down. There are slurs over the right-hand chords and a fermata over the first measure of the right hand.

*poco rit*

*Tango (ruhig)*

(rit)

Handwritten musical notation for the first system, featuring a treble clef and a complex melodic line with various accidentals and slurs.

Handwritten musical notation for the second system, featuring a treble clef and a melodic line with a fermata and a final double bar line.

Kardung cortisip (frei)

Handwritten musical notation for the third system, featuring a treble clef, a circled 'p' dynamic marking, and a melodic line with a fermata.

Handwritten musical notation for the fourth system, featuring a treble clef, a circled 'f' dynamic marking, and a melodic line with a fermata.

breit — aber nicht schleppen

steigern →

großes mit —



sehr leicht

Handwritten musical notation for the first system. It consists of three staves. The top staff has a treble clef and contains notes: G4, A4, B4, C5, B4, A4, G4, F4, E4, D4. The middle staff has a bass clef and contains notes: G3, F3, E3, D3, C3, B2, A2, G2. The bottom staff has a bass clef and contains notes: G2, F2, E2, D2, C2, B1, A1, G1. Vertical lines connect the notes across the staves. There are some handwritten annotations on the left side, including 'trk' and 'h'.

Handwritten musical notation for the second system. It consists of three staves. The top staff has a treble clef and contains notes: G4, A4, B4, C5, B4, A4, G4, F4, E4, D4. The middle staff has a bass clef and contains notes: G3, F3, E3, D3, C3, B2, A2, G2. The bottom staff has a bass clef and contains notes: G2, F2, E2, D2, C2, B1, A1, G1. Vertical lines connect the notes across the staves.

Handwritten musical notation for the third system. It consists of three staves. The top staff has a treble clef and contains notes: G4, A4, B4, C5, B4, A4, G4, F4, E4, D4. The middle staff has a bass clef and contains notes: G3, F3, E3, D3, C3, B2, A2, G2. The bottom staff has a bass clef and contains notes: G2, F2, E2, D2, C2, B1, A1, G1. Vertical lines connect the notes across the staves.

Handwritten musical score for the first system, consisting of three staves. The top staff contains a complex melodic line with many accidentals (flats, sharps, naturals) and slurs. The middle staff has a similar melodic line with fewer accidentals. The bottom staff features a bass line with notes and accidentals, including a prominent flat sign.

Handwritten musical score for the second system, consisting of three staves. The notation continues with complex melodic and harmonic structures, including various accidentals and slurs across all three staves.

Handwritten musical score for the third system, consisting of three staves. The notation concludes with complex melodic and harmonic structures, including various accidentals and slurs across all three staves.

großes mit

Handwritten musical notation for the first system. The top staff is in treble clef and contains a sequence of notes: a half note G4, a quarter note A4, a quarter note B4, a half note C5, a quarter note B4, a quarter note A4, a half note G4, and a quarter note F4. The bottom staff is in bass clef and contains a half note G2, a half note G2, a half note G2, a half note G2, a half note G2, a half note G2, a half note G2, and a half note G2. Vertical bar lines divide the system into four measures.

Handwritten musical notation for the second system. The top staff is in treble clef and contains a sequence of notes: a half note G4, a quarter note A4, a quarter note B4, a half note C5, a quarter note B4, a quarter note A4, a half note G4, and a quarter note F4. The bottom staff is in bass clef and contains a half note G2, a half note G2, a half note G2, a half note G2, a half note G2, a half note G2, a half note G2, and a half note G2. Vertical bar lines divide the system into four measures. The system ends with a double bar line.

Lunga

Handwritten musical notation for the 'Lunga' section. The top staff is in treble clef and contains a sequence of notes: a half note G4, a quarter note A4, a quarter note B4, a half note C5, a quarter note B4, a quarter note A4, a half note G4, and a quarter note F4. The bottom staff is in bass clef and contains a half note G2, a half note G2, a half note G2, a half note G2, a half note G2, a half note G2, a half note G2, and a half note G2. Vertical bar lines divide the system into four measures.

Handwritten signature: Adolf Scherbaum

Improvisationen für Orgel

April 1980

über (Betrachtet ihn in Schmerzen)

Adolf Scherbaum

(♩) ruhig schreitend

Handwritten musical notation for the first system, featuring a treble and bass clef with a 3/8 time signature and a piano (p) dynamic marking. The treble staff contains a melodic line with notes G4, A4, B4, C5, B4, A4, G4, and a whole note G4. The bass staff contains a bass line with notes G3, A3, B3, C4, B3, A3, G3, and a whole note G3. The first measure is beamed together, and the second measure is a whole note.

Handwritten musical notation for the second system, continuing the piece. The treble staff has notes G4, A4, B4, C5, B4, A4, G4, and a whole note G4. The bass staff has notes G3, A3, B3, C4, B3, A3, G3, and a whole note G3. The first measure is beamed together, and the second measure is a whole note.

Handwritten musical notation for the third system, continuing the piece. The treble staff has notes G4, A4, B4, C5, B4, A4, G4, and a whole note G4. The bass staff has notes G3, A3, B3, C4, B3, A3, G3, and a whole note G3. The first measure is beamed together, and the second measure is a whole note.

Handwritten musical notation for the first system. The treble clef part begins with a quarter note G4, followed by a half note A4, and a quarter note B4. The bass clef part starts with a half note G3, followed by a half note F3, and a quarter note E3. The system concludes with a quarter note G4 in the treble and a half note F3 in the bass.

Handwritten musical notation for the second system. The treble clef part features a half note G4, followed by a half note A4, and a quarter note B4. The bass clef part starts with a half note G3, followed by a half note F3, and a quarter note E3. The system concludes with a quarter note G4 in the treble and a half note F3 in the bass.

Handwritten musical notation for the third system. The treble clef part features a half note G4, followed by a half note A4, and a quarter note B4. The bass clef part starts with a half note G3, followed by a half note F3, and a quarter note E3. The system concludes with a quarter note G4 in the treble and a half note F3 in the bass.

Handwritten musical notation for the fourth system. The treble clef part features a half note G4, followed by a half note A4, and a quarter note B4. The bass clef part starts with a half note G3, followed by a half note F3, and a quarter note E3. The system concludes with a quarter note G4 in the treble and a half note F3 in the bass.

Handwritten musical notation for the first system. The treble clef part consists of four measures: the first measure has notes G4, A4, B4 with accidentals b, b, b; the second measure has notes C5, D5, E5 with accidentals #, #, #; the third measure has notes F5, G5 with accidentals natural, natural; the fourth measure has notes A5, B5 with accidentals natural, natural. The bass clef part has notes G3, A3, B3 with accidentals b, #, # in the first measure; notes C4, D4, E4 with accidentals natural, natural, b in the second measure; notes F4, G4 with accidentals natural, # in the third measure; and notes A4, B4 with accidentals #, # in the fourth measure.

Handwritten musical notation for the second system. The treble clef part has five measures with notes G4, A4, B4, C5, D5, E5 and accidentals natural, #, b, natural, b. The bass clef part features triplets of notes G3, A3, B3 with accidentals natural, #, # in the first four measures, and a triplet of notes C4, D4, E4 with accidentals natural, #, # in the fifth measure.

Handwritten musical notation for the third system. The treble clef part has four measures with notes G4, A4, B4, C5, D5, E5 and accidentals natural, b, b, #, #, #. The bass clef part has notes G3, A3, B3 with accidentals b, #, # in the first measure; notes C4, D4, E4 with accidentals natural, #, # in the second measure; notes F4, G4 with accidentals b, # in the third measure; and notes A4, B4 with accidentals natural, # in the fourth measure.

Handwritten musical notation for the fourth system. The treble clef part has four measures with notes G4, A4, B4, C5, D5, E5 and accidentals #, #, #, #, #, #. The bass clef part has notes G3, A3, B3 with accidentals b, # in the first measure; notes C4, D4, E4 with accidentals b, # in the second measure; notes F4, G4 with accidentals #, # in the third measure; and notes A4, B4 with accidentals natural, # in the fourth measure.

Handwritten musical notation for the first system. The top staff is in treble clef and contains two measures of music with complex rhythmic patterns, including sixteenth and thirty-second notes, and a fermata. The bottom staff is in bass clef and contains two measures with simpler rhythmic patterns. A dynamic marking 'mf' is present at the beginning of the first measure.

Handwritten musical notation for the second system. The top staff is in treble clef and contains two measures of music with complex rhythmic patterns, including sixteenth and thirty-second notes, and a fermata. The bottom staff is in bass clef and contains two measures with simpler rhythmic patterns.

Handwritten musical notation for the third system. The top staff is in treble clef and contains two measures of music with complex rhythmic patterns, including sixteenth and thirty-second notes, and a fermata. The bottom staff is in bass clef and contains two measures with simpler rhythmic patterns.

Handwritten musical notation for the fourth system. The top staff is in treble clef and contains two measures of music with complex rhythmic patterns, including sixteenth and thirty-second notes, and a fermata. The bottom staff is in bass clef and contains two measures with simpler rhythmic patterns.



Handwritten musical notation for the first system. The top staff is in treble clef with a key signature of one flat (B-flat) and a 3/4 time signature. It contains two measures of music with complex rhythmic patterns, including eighth and sixteenth notes, and rests. The bottom staff is in bass clef with a key signature of one flat and contains two measures of music with quarter and eighth notes.

Handwritten musical notation for the second system. The top staff is in treble clef with a key signature of one flat and a 3/4 time signature. It contains two measures of music with complex rhythmic patterns. The bottom staff is in bass clef with a key signature of one flat and contains two measures of music with quarter and eighth notes.

Handwritten musical notation for the third system. The top staff is in treble clef with a key signature of one flat and a 3/4 time signature. It features a large slur over the entire staff and contains two measures of music with complex rhythmic patterns. The bottom staff is in bass clef with a key signature of one flat and contains two measures of music with quarter and eighth notes. A dynamic marking 'f' is present in the first measure of the top staff.

Handwritten musical notation for the fourth system. The top staff is in treble clef with a key signature of one flat and a 3/4 time signature. It features a large slur over the entire staff and contains two measures of music with complex rhythmic patterns. The bottom staff is in bass clef with a key signature of one flat and contains two measures of music with quarter and eighth notes. A dynamic marking 'f' is present in the first measure of the top staff.

Handwritten musical notation for the first system. The treble clef part consists of sixteenth-note chords: G4-B4-D5 (b), A4-C5-E5 (b), B4-D5-F5 (b), C5-E5-G5 (b), D5-F5-A5 (b), and E5-G5-B5 (b). The bass clef part has a simple bass line: G3 (b), A3 (b), B3 (b), C4 (b), D4 (b), and E4 (b).

Handwritten musical notation for the second system. The treble clef part consists of sixteenth-note chords: G4-B4-D5 (b), A4-C5-E5 (b), B4-D5-F5 (b), C5-E5-G5 (b), D5-F5-A5 (b), and E5-G5-B5 (b). The bass clef part has a simple bass line: G3 (b), A3 (b), B3 (b), C4 (b), D4 (b), and E4 (b).

Handwritten musical notation for the third system. The treble clef part consists of sixteenth-note chords: G4-B4-D5 (b), A4-C5-E5 (b), B4-D5-F5 (b), C5-E5-G5 (b), D5-F5-A5 (b), and E5-G5-B5 (b). The bass clef part has a simple bass line: G3 (b), A3 (b), B3 (b), C4 (b), D4 (b), and E4 (b).

Handwritten musical notation for the fourth system. The treble clef part consists of sixteenth-note chords: G4-B4-D5 (b), A4-C5-E5 (b), B4-D5-F5 (b), C5-E5-G5 (b), D5-F5-A5 (b), and E5-G5-B5 (b). The bass clef part has a simple bass line: G3 (b), A3 (b), B3 (b), C4 (b), D4 (b), and E4 (b).

Handwritten musical notation for the first system. The treble clef part consists of three measures of dense, multi-voice chordal textures. The bass clef part has a simple line with notes and rests, including a fermata over the first measure.

Handwritten musical notation for the second system. The treble clef part continues with complex textures, including some notes with accents. The bass clef part continues with simple notes and rests.

Handwritten musical notation for the third system. The treble clef part shows further development of the textures. The bass clef part continues with simple notes and rests.

Handwritten musical notation for the fourth system. The treble clef part concludes with complex textures. The bass clef part continues with simple notes and rests.

(rit...)

Mod. (1) rubato

breiter (♩)

(mit Breit (♩))

Handwritten musical notation for the first system, consisting of two measures. The first measure contains notes on the staff with a flat (b) above the second note. The second measure contains notes with flats (b) above the first and second notes, and a double flat (bb) above the third note. The notes are connected by a slur.

Handwritten musical notation for the second system, consisting of two measures. The first measure contains notes with flats (b) above the second, third, and fourth notes. The second measure contains notes with flats (b) above the second, third, and fourth notes. The notes are connected by a slur.

Handwritten musical notation for the third system, consisting of two measures. The first measure contains notes with flats (b) above the second, third, and fourth notes. The second measure contains notes with flats (b) above the second, third, and fourth notes. The notes are connected by a slur.

Handwritten musical notation for the fourth system, consisting of two measures. The first measure contains notes with flats (b) above the second, third, and fourth notes. The second measure contains notes with flats (b) above the second, third, and fourth notes. The notes are connected by a slur.

groß.rit

ADAGIO (♩) sehr langsam (schlicht)

*poco rit)*

*sehr langsam*



mit größter Ruhe

lunga

guit. ....

April  
1980

Improvisationen für Orgel

April 1980

über (Betrachtet ihn in Schmerzen)

Adolf Scherbaum

lento

Handwritten musical notation for the first system. It features a treble clef, a common time signature (C), and a piano (pp) dynamic marking. The melody consists of quarter notes: G4, A4, Bb4, C5, Bb4, A4, G4. The bass line has whole notes: C3, G2, C3, G2, C3, G2. Vertical lines connect the notes between staves.

Handwritten musical notation for the second system. The melody continues with quarter notes: Bb4, A4, G4, F4, E4, D4, C4. The bass line continues with whole notes: C3, G2, C3, G2, C3, G2. Vertical lines connect the notes between staves.

Handwritten musical notation for the third system. The melody continues with quarter notes: Bb4, A4, G4, F4, E4, D4, C4. The bass line continues with whole notes: C3, G2, C3, G2, C3, G2. Vertical lines connect the notes between staves.

Handwritten musical notation for the fourth system. The melody continues with quarter notes: Bb4, A4, G4, F4, E4, D4, C4. The bass line continues with whole notes: C3, G2, C3, G2, C3, G2. Vertical lines connect the notes between staves.

Handwritten musical notation for the first system. The treble clef part contains notes with accidentals:  $b$ ,  $\sharp$ ,  $\flat$ ,  $\sharp$ ,  $b$ ,  $\sharp$ ,  $\flat$ ,  $\sharp$ ,  $b$ ,  $a$ ,  $b$ ,  $o$ . The bass clef part contains notes with accidentals:  $o$ ,  $o$ ,  $o$ ,  $o$ ,  $o$ .

Handwritten musical notation for the second system. The treble clef part contains notes with accidentals:  $o$ ,  $g$ ,  $\sharp g$ ,  $g$ ,  $b g$ ,  $\sharp g$ ,  $\sharp g$ ,  $b g$ ,  $b g$ . The bass clef part contains notes with accidentals:  $o$ ,  $o$ ,  $o$ ,  $o$ ,  $b o$ .

Handwritten musical notation for the third system. The treble clef part contains notes with accidentals:  $b g$ ,  $\sharp g$ ,  $b g$ ,  $b g$ ,  $g$ ,  $\sharp g$ ,  $\sharp g$ ,  $b g$ ,  $b g$ . The bass clef part contains notes with accidentals:  $o$ ,  $o$ ,  $g$ ,  $\sharp g$ ,  $b g$ ,  $b g$ ,  $g$ ,  $b g$ .

Handwritten musical notation for the fourth system. The treble clef part contains notes with accidentals:  $\sharp g$ ,  $\sharp g$ ,  $b g$ ,  $d$ ,  $b d$ ,  $b d$ ,  $b g$ ,  $b g$ . The bass clef part contains notes with accidentals:  $b g$ ,  $g$ ,  $b g$ ,  $b g$ ,  $o$ ,  $o$ .

Handwritten musical notation for the first system. The treble clef staff contains notes:  $b^b$ ,  $d$ ,  $\#d$  in the first measure;  $g$ ,  $b^b$ ,  $g$  in the second measure; and  $\#g$ ,  $\#g$  in the third measure. The grand staff below shows chordal accompaniment with notes and stems.

(poco rit)

Handwritten musical notation for the second system. The treble clef staff contains notes:  $b^b$ ,  $g$ ,  $d$  in the first measure;  $d$ ,  $b^b$ ,  $d$  in the second measure; and  $b^b$ ,  $b^b$ ,  $b^b$  in the third measure. The grand staff below shows chordal accompaniment. The system ends with a double bar line.

(♩)

Handwritten musical notation for the third system. The treble clef staff contains notes:  $\#$ ,  $\#$ ,  $b^b$  in the first measure;  $\#$ ,  $\#$ ,  $b^b$  in the second measure; and  $b^b$ ,  $b^b$  in the third measure. The grand staff below shows chordal accompaniment. A 4/8 time signature is written on the left side.

Handwritten musical notation for the fourth system. The treble clef staff contains notes:  $\#$ ,  $\#$ ,  $b^b$  in the first measure;  $\#$ ,  $\#$ ,  $b^b$  in the second measure; and  $b^b$ ,  $b^b$  in the third measure. The grand staff below shows chordal accompaniment.

Handwritten musical notation for the first system. The top staff (treble clef) begins with a whole note D. The bottom staff (bass clef) contains a sequence of notes: G#4, A4, B4, C#5, D5, with a slur over the last three notes. The system concludes with a whole note D in the top staff and a slur over G#4, A4, B4, C#5, D5 in the bottom staff.

Handwritten musical notation for the second system. The top staff (treble clef) contains a sequence of notes: G#4, A4, B4, C#5, D5, with a slur over the last three notes. The bottom staff (bass clef) has a whole rest. The system ends with a fermata over a whole rest in the bottom staff.

Handwritten musical notation for the third system. The top staff (treble clef) contains notes G#4, A4, B4, C#5, D5. The bottom staff (bass clef) contains notes G#4, A4, B4, C#5, D5, with a slur over the last three notes. The system concludes with a slur over G#4, A4, B4, C#5, D5 in the bottom staff.

Handwritten musical notation for the fourth system. The top staff (treble clef) contains notes G#4, A4, B4, C#5, D5. The bottom staff (bass clef) contains notes G#4, A4, B4, C#5, D5, with a slur over the last three notes. The system concludes with a slur over G#4, A4, B4, C#5, D5 in the bottom staff.

(f) pesante

Handwritten musical notation on a grand staff. The right hand part features a melodic line with various accidentals (flats and naturals) and slurs. The left hand part consists of vertical lines with rhythmic markings above them, including a circled '5' and other symbols.

Handwritten musical notation on a grand staff. The right hand part continues the melodic development with slurs and accidentals. The left hand part has vertical lines with rhythmic markings, including a circled '9' and other symbols.

Handwritten musical notation on a grand staff, labeled with a circled '(1)'. The right hand part shows a melodic line with a circled '###' and various accidentals. The left hand part features vertical lines with rhythmic markings, including a circled '4' and other symbols.



Handwritten musical score for the first system. It consists of three staves. The top staff has notes with stems and beams, some with accidentals. The middle staff has a sequence of notes: b, d, d, d, d, d, d, d, with a final measure containing a chord (b, d, g). The bottom staff has notes with stems and beams, some with accidentals.

*rubato* (frei gestalten)  
6

Handwritten musical score for the second system. It consists of two staves. The top staff has notes with stems and beams, some with accidentals, and a large slur over the first two measures. The bottom staff has notes with stems and beams, some with accidentals, and a large slur over the first two measures.

Handwritten musical score for the third system. It consists of two staves. The top staff has notes with stems and beams, some with accidentals, and a large slur over the first two measures. The bottom staff has notes with stems and beams, some with accidentals, and a large slur over the first two measures.

Handwritten musical notation for the first system, featuring a grand staff with treble and bass clefs. It contains three measures of music with various accidentals (sharps, flats, naturals) and a large slur over the notes. The bass line consists of whole notes.

Handwritten musical notation for the second system, similar to the first. It shows three measures with complex accidentals and a large slur. The bass line has whole notes.

Handwritten musical notation for the third system, continuing the piece. It consists of three measures with various accidentals and a large slur. The bass line has whole notes.

sonnig treibend (bewegt (frei - arco))

→

Handwritten musical notation for the first system, consisting of three staves (treble, alto, and bass clefs) with notes and accidentals.

Handwritten musical notation for the second system, consisting of three staves (treble, alto, and bass clefs) with notes and accidentals.

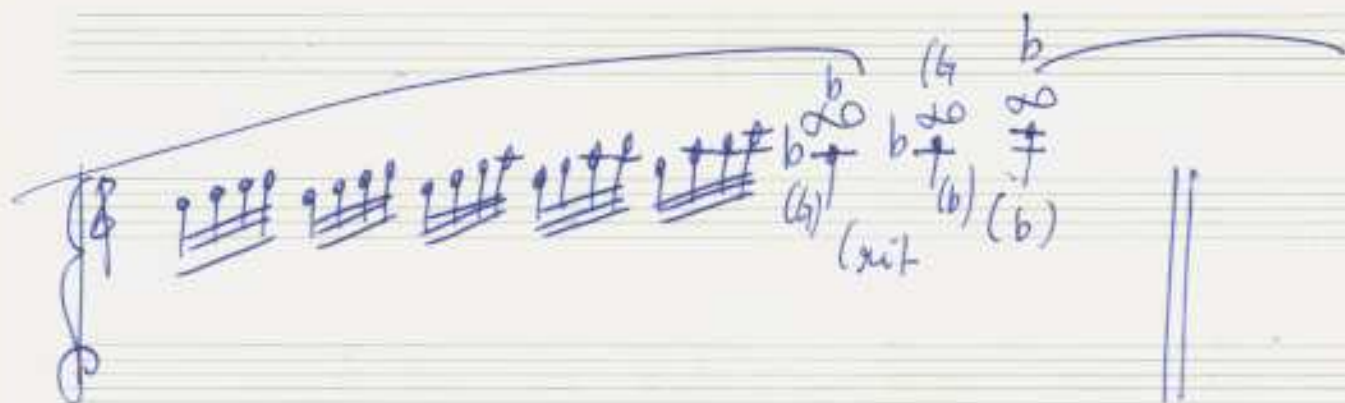
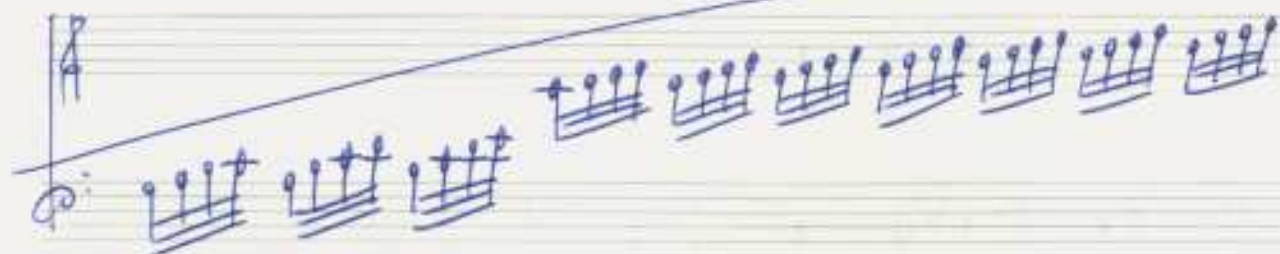
Handwritten musical notation for the third system, consisting of three staves (treble, alto, and bass clefs) with notes and accidentals.

(poco rit...)

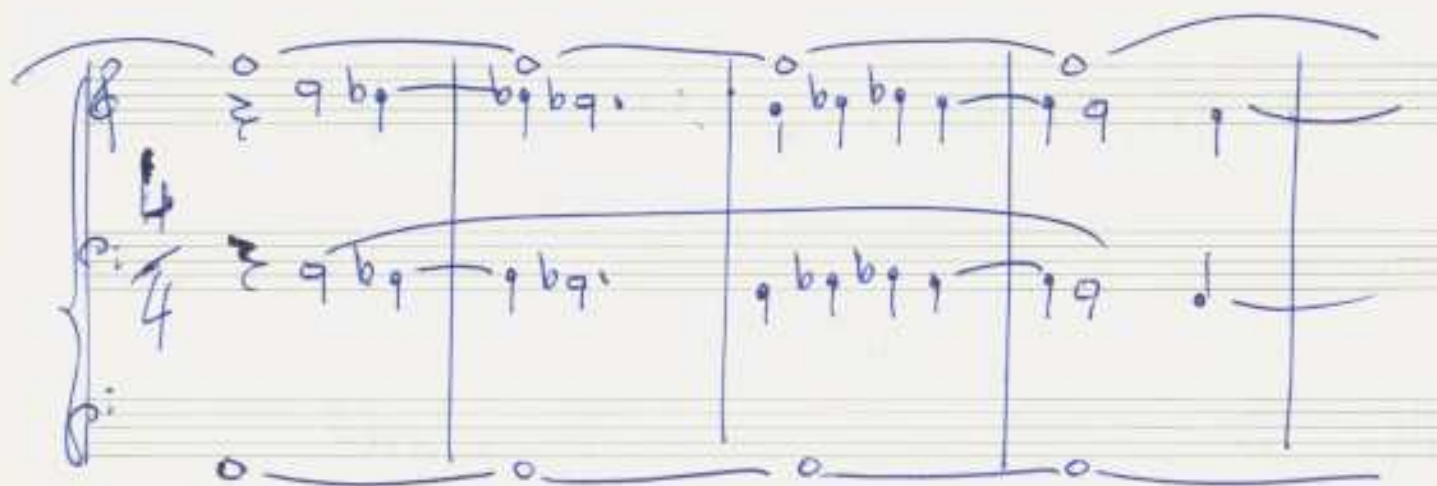
(♩)

frei (Kardenzartig)

Prattissimo



sehr breit ausladend



großes gut..

Lunga

April 1880  
 Adolf Schreier