

Fantasie - für Orgel N. 1

April 1980

über ( Betrachtet ihn in Schmerzen )

Adolf Scherbaum

Dem Gedenken an meinem  
Liebsten Vater - der  
vor kurzem verstorben ist.

Sein Sohn Adolf

breit (Mod. (♩) nicht schlingend)

Handwritten musical score for the first system. It consists of three staves. The top staff is a treble clef with a 4-measure rest. The middle staff is a bass clef with a 4-measure rest. The bottom staff is a bass clef with a 3-measure rest. The music is marked with piano dynamics (p) and includes various notes and rests.

Handwritten musical score for the second system. It consists of three staves. The top staff is a treble clef with a 4-measure rest. The middle staff is a bass clef with a 4-measure rest. The bottom staff is a bass clef with a 3-measure rest. The music is marked with piano dynamics (p) and includes various notes and rests.

Handwritten musical score for the third system. It consists of three staves. The top staff is a treble clef with a 4-measure rest. The middle staff is a bass clef with a 4-measure rest. The bottom staff is a bass clef with a 3-measure rest. The music is marked with piano dynamics (p) and includes various notes and rests.

Handwritten musical score system 1. It consists of three staves. The top staff is in treble clef with a key signature of one sharp (F#) and contains a melodic line with eighth notes and slurs. The middle staff is in bass clef with a key signature of one sharp (F#) and contains a bass line with a slur and a handwritten '77' above it. The bottom staff is in bass clef with a key signature of one sharp (F#) and contains a bass line with a slur.

Handwritten musical score system 2. It consists of three staves. The top staff is in treble clef with a key signature of one flat (Bb) and contains a melodic line with eighth notes and slurs. The middle staff is in bass clef with a key signature of one flat (Bb) and contains a bass line with a slur and a handwritten '77' above it. The bottom staff is in bass clef with a key signature of one flat (Bb) and contains a bass line with a slur.

Handwritten musical score system 3. It consists of three staves. The top staff is in treble clef with a key signature of one sharp (F#) and contains a melodic line with eighth notes and slurs. The middle staff is in bass clef with a key signature of one sharp (F#) and contains a bass line with a slur. The bottom staff is in bass clef with a key signature of one sharp (F#) and contains a bass line with a slur.

weit

Handwritten musical notation for the first system. It consists of three measures. The first measure has a treble clef and a 6/8 time signature. The second measure has a bass clef. The third measure has a treble clef. The notation includes various notes, accidentals (sharps and flats), and a large slur spanning across the measures.

Handwritten musical notation for the second system. It consists of three measures. The first measure has a treble clef. The second measure has a bass clef. The third measure has a treble clef. The notation includes various notes, accidentals, and a large slur spanning across the measures.

mit

Handwritten musical notation for the third system. It consists of three measures. The first measure has a treble clef and a 6/8 time signature. The second measure has a bass clef. The third measure has a treble clef. The notation includes various notes, accidentals, and a large slur spanning across the measures.

langsam (ruhig)

Handwritten musical notation for the first system. It features a treble clef and a bass clef. The time signature is 4/4. A circled 'P' is written in the bass staff. The music consists of two staves with various notes and rests, including a circled '9' in the bass staff.

Handwritten musical notation for the second system. It continues the piece with two staves and various musical notations.

Handwritten musical notation for the third system. It shows more complex rhythmic patterns and a circled '9' in the bass staff.

Handwritten musical notation for the fourth system. It features dense chordal textures in the treble staff and a circled '9' in the bass staff.

(poco rit)

Andante

Handwritten musical notation for the first system. The treble clef is circled. The key signature has one flat (B-flat). The time signature is 4/4. The first measure contains a circled treble clef and a piano (p) dynamic marking. The melody in the treble clef consists of quarter notes: B-flat, A, G, F, E, D, C, B. The bass clef accompaniment consists of quarter notes: B-flat, A, G, F, E, D, C, B.

Handwritten musical notation for the second system. The treble clef melody continues with quarter notes: B, A, G, F, E, D, C, B. The bass clef accompaniment continues with quarter notes: B, A, G, F, E, D, C, B.

Handwritten musical notation for the third system. The treble clef melody features a slur over the notes B, A, G, F, E, D, C, B, followed by a fermata. The bass clef accompaniment continues with quarter notes: B, A, G, F, E, D, C, B.

Handwritten musical notation for the fourth system. The treble clef melody concludes with a slur over the notes B, A, G, F, E, D, C, B, followed by a fermata. The bass clef accompaniment concludes with quarter notes: B, A, G, F, E, D, C, B.

Handwritten musical notation for the first system. The treble clef is on the top staff, and the bass clef is on the bottom staff. The key signature has one flat (B-flat). The time signature is 4/4. The melody in the treble clef consists of four measures, all under a single slur. The notes are: G4, A4, Bb4, C5 (quarter); D5, E5, F5, G5 (quarter); A5, Bb5, C6, D6 (quarter); E6, F6, G6, A6 (quarter). The bass staff has a single note G2 on the first line.

Handwritten musical notation for the second system. The treble clef is on the top staff, and the bass clef is on the bottom staff. The key signature has one flat (B-flat). The time signature is 4/4. The melody in the treble clef consists of four measures, all under a single slur. The notes are: Bb6, C7, D7, E7 (quarter); F7, G7, A7, Bb7 (quarter); C8, D8, E8, F8 (quarter); G8, A8, Bb8, C9 (quarter). The bass staff has a single note G2 on the first line.

Handwritten musical notation for the third system. The treble clef is on the top staff, and the bass clef is on the bottom staff. The key signature has one flat (B-flat). The time signature is 4/4. The melody in the treble clef consists of four measures, all under a single slur. The notes are: D9, E9, F9, G9 (quarter); A9, Bb9, C10, D10 (quarter); E10, F10, G10, A10 (quarter); Bb10, C11, D11, E11 (quarter). The word "Cant." is written above the staff. The bass staff has a single note G2 on the first line.



erregt (frei) (nachwärts treibend)

Handwritten musical score for the first system. The upper staff is in treble clef with a key signature of one sharp (F#) and a 7/8 time signature. It contains four measures of music, each with a chordal texture. The lower staff is in bass clef and contains a long, continuous melodic line with a sharp sign (#) at the beginning. There are circled annotations in the left margin: a circled '4' and a circled '8'. A circled '15' is written above the first measure of the lower staff.

Handwritten musical score for the second system. The upper staff is in treble clef with a key signature of one flat (Bb) and a 7/8 time signature. It contains four measures of music. The lower staff is in bass clef and contains a long, continuous melodic line with a flat sign (b) at the beginning.

Handwritten musical score for the third system. The upper staff is in treble clef with a key signature of one sharp (F#) and a 7/8 time signature. It contains four measures of music. The lower staff is in bass clef and contains a long, continuous melodic line with a sharp sign (#) at the beginning. There are two arrows pointing to the right in the lower staff, one above the second measure and one below the third measure.

sehr erregt (bewegt) (♩)

Handwritten musical notation for the first system. The top staff is in treble clef and the bottom staff is in bass clef. The key signature has one flat (B-flat) and the time signature is 4/4. The first measure contains a half note chord in the treble and a half note chord in the bass. The second measure contains a half note chord in the treble and a half note chord in the bass. The third measure contains a half note chord in the treble and a half note chord in the bass. The fourth measure contains a half note chord in the treble and a half note chord in the bass.

Handwritten musical notation for the second system. The top staff is in treble clef and the bottom staff is in bass clef. The key signature has one flat (B-flat) and the time signature is 4/4. The first measure contains a half note chord in the treble and a half note chord in the bass. The second measure contains a half note chord in the treble and a half note chord in the bass. The third measure contains a half note chord in the treble and a half note chord in the bass. The fourth measure contains a half note chord in the treble and a half note chord in the bass.

Handwritten musical notation for the third system. The top staff is in treble clef and the bottom staff is in bass clef. The key signature has one flat (B-flat) and the time signature is 4/4. The first measure contains a half note chord in the treble and a half note chord in the bass. The second measure contains a half note chord in the treble and a half note chord in the bass. The third measure contains a half note chord in the treble and a half note chord in the bass. The fourth measure contains a half note chord in the treble and a half note chord in the bass.

Handwritten musical notation for the fourth system. The top staff is in treble clef and the bottom staff is in bass clef. The key signature has one flat (B-flat) and the time signature is 4/4. The first measure contains a half note chord in the treble and a half note chord in the bass. The second measure contains a half note chord in the treble and a half note chord in the bass. The third measure contains a half note chord in the treble and a half note chord in the bass. The fourth measure contains a half note chord in the treble and a half note chord in the bass, ending with a double bar line.

(Paci gestaltand)

Handwritten musical notation for the first system. It consists of two staves. The upper staff is in treble clef and contains four measures: the first has two notes with accents (^) above them, followed by three measures with rests. The lower staff is in bass clef and contains four measures of notes, with the first measure starting with a fermata.

Handwritten musical notation for the second system. It consists of two staves. The upper staff is in treble clef and contains four measures: the first has two notes with accents (^) above them, followed by three measures with rests. The lower staff is in bass clef and contains four measures of notes, with the first measure starting with a fermata.

Handwritten musical notation for the third system. It consists of two staves. The upper staff is in treble clef and contains four measures: the first has two notes with accents (^) above them, followed by three measures with rests. The lower staff is in bass clef and contains four measures of notes, with the first measure starting with a fermata.

(26t poco rit  
36t " "

Handwritten musical notation for the fourth system. It consists of two staves. The upper staff is in treble clef and contains four measures: the first has two notes with accents (^) above them, followed by three measures with rests. The lower staff is in bass clef and contains four measures of notes, with the first measure starting with a fermata. The system ends with a double bar line and a flourish.

*frei (Kantaten)*

Handwritten musical score for three staves. The top staff has a treble clef and a common time signature. The middle staff has a treble clef and a key signature of one sharp (F#). The bottom staff has a bass clef. The music consists of several measures with notes, rests, and slurs. There are some annotations like '4' and '6' near the middle staff.

Handwritten musical score for three staves. The top staff has a treble clef and a common time signature. The middle staff has a treble clef and a key signature of one sharp (F#). The bottom staff has a bass clef. The music consists of several measures with notes, rests, and slurs. There are some annotations like '4' and '6' near the middle staff.

*Grades rit...* *lunga*

Handwritten musical score for three staves. The top staff has a treble clef and a common time signature. The middle staff has a treble clef and a key signature of one sharp (F#). The bottom staff has a bass clef. The music consists of several measures with notes, rests, and slurs. There are some annotations like '4' and '6' near the middle staff.

sehr langsam und verhalten

trachtet ihn in Schmerzen wie

er sein Blut ver= gießt. Seht wie aus seinem Herzen der

letzte Tropfen fließt Er nahm hin=weg die Sünden er

trug er trug all unsre Schuld bei Gott laßt er uns

finden den Frieden den Frieden den Frieden

Crescendo

Frieden Frieden Frie

den

lunga **Friede**

Fantasie für Orgel (N2)

April 1980

über (Betrachtet ihn in Schmerzen)

Andreas Schenk



breit ausladenet (1)

Handwritten musical score for the first system. It consists of three staves. The top staff is in treble clef with a key signature of one flat (B-flat) and a common time signature. It contains a melodic line with notes and rests, including a fermata over a final note. The middle staff is in alto clef with a common time signature and contains a melodic line with notes and rests. The bottom staff is in bass clef with a common time signature and contains a bass line with notes and rests. There are dynamic markings such as 'ff' and 'p' throughout the system.

Handwritten musical score for the second system. It consists of three staves. The top staff is in treble clef with a key signature of one flat and a common time signature. It contains a melodic line with notes and rests. The middle staff is in alto clef with a common time signature and contains a melodic line with notes and rests. The bottom staff is in bass clef with a common time signature and contains a bass line with notes and rests. There are dynamic markings such as 'ff' and 'p' throughout the system.

Handwritten musical score for the third system. It consists of three staves. The top staff is in treble clef with a key signature of one flat and a common time signature. It contains a melodic line with notes and rests. The middle staff is in alto clef with a common time signature and contains a melodic line with notes and rests. The bottom staff is in bass clef with a common time signature and contains a bass line with notes and rests. There are dynamic markings such as 'ff' and 'p' throughout the system.

Handwritten musical notation for the first system. It consists of three staves. The top staff is in treble clef with a key signature of one sharp (F#) and a common time signature (C). It contains a melodic line with a slur and a fermata. The middle and bottom staves are in bass clef and contain notes and rests. A large brace spans across the top of the system.

Handwritten musical notation for the second system. It consists of three staves. The top staff is in treble clef with a key signature of one sharp (F#) and a common time signature (C). It contains a melodic line with a slur and a fermata. The middle and bottom staves are in bass clef and contain notes and rests. A large brace spans across the top of the system.

Handwritten musical notation for the third system. It consists of three staves. The top staff is in treble clef with a key signature of one sharp (F#) and a common time signature (C). It contains a melodic line with a slur and a fermata. The middle and bottom staves are in bass clef and contain notes and rests. A large brace spans across the top of the system.

Handwritten musical score for the first system. It features a treble clef, a key signature of one sharp (F#), and a 4/4 time signature. The music consists of a melody in the upper voice and a bass line in the lower voice. The melody is marked with a slur and includes notes with accidentals (F#, G, A, Bb, C). The bass line includes chords and a melodic fragment.

(poco rit)

Handwritten musical score for the second system. It includes the instruction "(poco rit)" and a fermata over the final note of the melody. The notation continues with a treble clef, key signature of one sharp, and 4/4 time signature.

(frei (Wanderartigkeit))

(♩)

(subito)

steigen

♩

subito (♩) bewegte (♩) frei

♩

(cont.)

beneath

poco (rit)

Handwritten musical notation for the "poco (rit)" section, consisting of two measures. The first measure has a treble clef, a key signature of one flat, and a bass clef with notes G and B. The second measure has a treble clef, a key signature of two flats, and a bass clef with notes B and G. Both measures feature a large, sweeping slur over the upper staves.

tempo (rubato)

Handwritten musical notation for the "tempo (rubato)" section, consisting of two measures. The first measure has a treble clef, a key signature of two sharps, and a bass clef with notes G and A. The second measure has a treble clef, a key signature of three sharps, and a bass clef with notes A and G. Both measures feature a large, sweeping slur over the upper staves.

Handwritten musical notation for the final section, consisting of two measures. The first measure has a treble clef, a key signature of two flats, and a bass clef with notes G and B. The second measure has a treble clef, a key signature of one flat, and a bass clef with notes B and G. Both measures feature a large, sweeping slur over the upper staves.

Handwritten musical notation for two measures. The first measure is in treble clef with a key signature of one flat (B-flat) and a 9/8 time signature. The second measure is in bass clef with a key signature of one flat (B-flat). Both measures contain a half note chord with notes G4, B-flat4, and D5.

Handwritten musical notation for two measures. The first measure is in treble clef with a key signature of one flat (B-flat). The second measure is in bass clef with a key signature of one flat (B-flat). Both measures contain a half note chord with notes G4 and B-flat4.

Handwritten musical notation for two measures. The first measure is in treble clef with a key signature of one flat (B-flat) and a 9/8 time signature. The second measure is in bass clef with a key signature of one flat (B-flat) and a 9/8 time signature. Both measures contain a half note chord with notes G4, B-flat4, and D5.

breit

(rit. - -)



mit...

Handwritten musical score for three staves. The top staff has notes with '33' and '9' markings. The middle staff has notes with '33' and '9' markings. The bottom staff has notes with '9' markings. There are various musical symbols like beams and slurs.

Adagio (sehr schlicht (A))

Handwritten musical score for two staves. The top staff has notes with '9' markings. The bottom staff has notes with '3' markings. There are various musical symbols like beams and slurs.

Handwritten musical score for two staves. The top staff has notes with '9' markings. The bottom staff has notes with '3' markings. There are various musical symbols like beams and slurs.



Adagio

(A)

pp

immer erregter (bewegter)

#

aller.

Handwritten musical notation for the first system. The treble clef staff contains a melodic line with a slur and a fermata. The bass clef staff contains a 7/4 time signature and a slur. The key signature has one flat.

escripte (1) ad. lib. (1)

Handwritten musical notation for the second system. The treble clef staff contains a melodic line with a slur and a fermata. The bass clef staff contains a 7/4 time signature and a slur. The key signature has one sharp.

Handwritten musical notation for the third system. The treble clef staff contains a melodic line with a slur and a fermata. The bass clef staff contains a 7/4 time signature and a slur. The key signature has one flat.

modo (accel.)

Handwritten musical score for 'modo (accel.)'. It features a grand staff with three staves. The top staff is a treble clef with a key signature of two sharps (F# and C#) and a common time signature. The middle staff is an alto clef with a key signature of two sharps and a common time signature. The bottom staff is a bass clef with a key signature of two sharps and a common time signature. The music consists of several measures of notes, with some notes beamed together. There are two arrows pointing to the right, one above the middle staff and one below it, indicating acceleration. The piece ends with a double bar line.

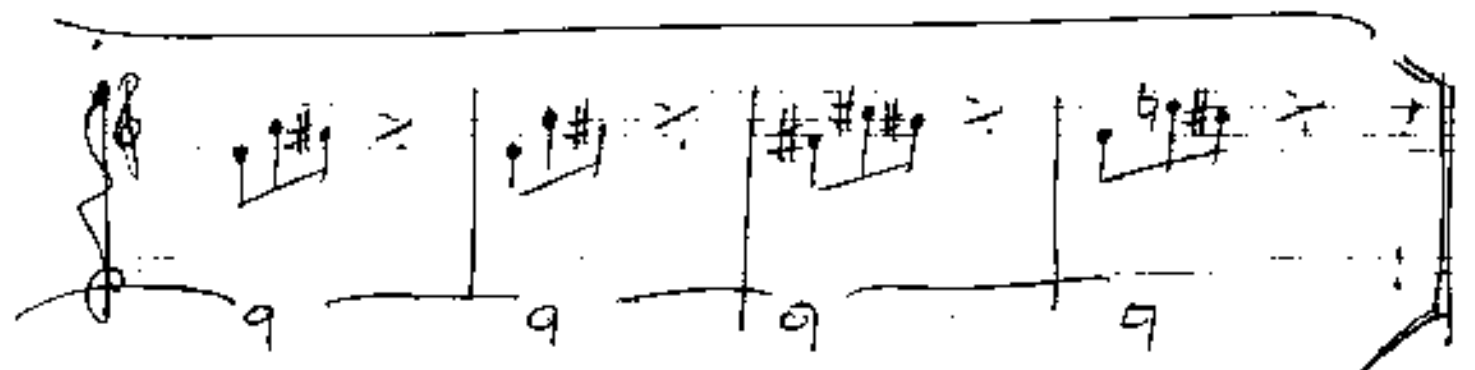
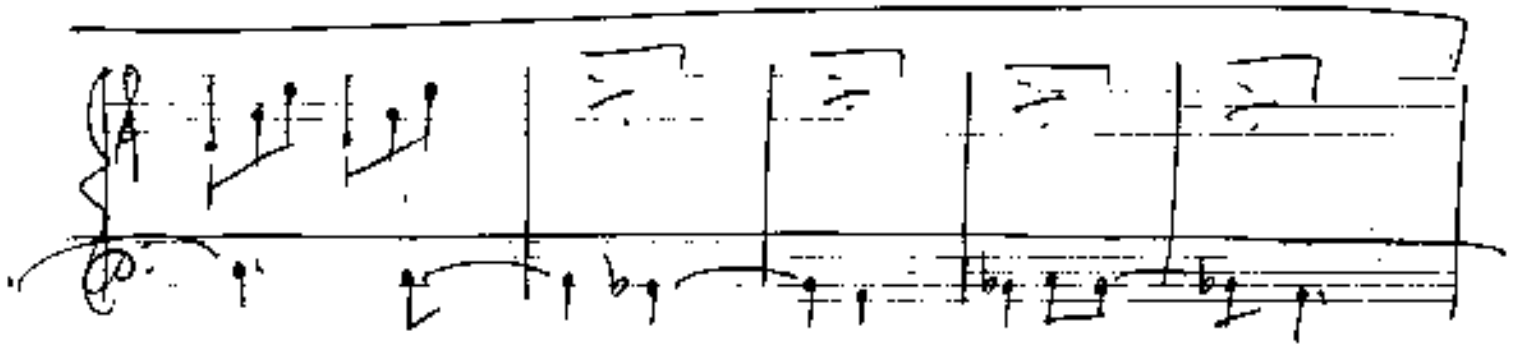
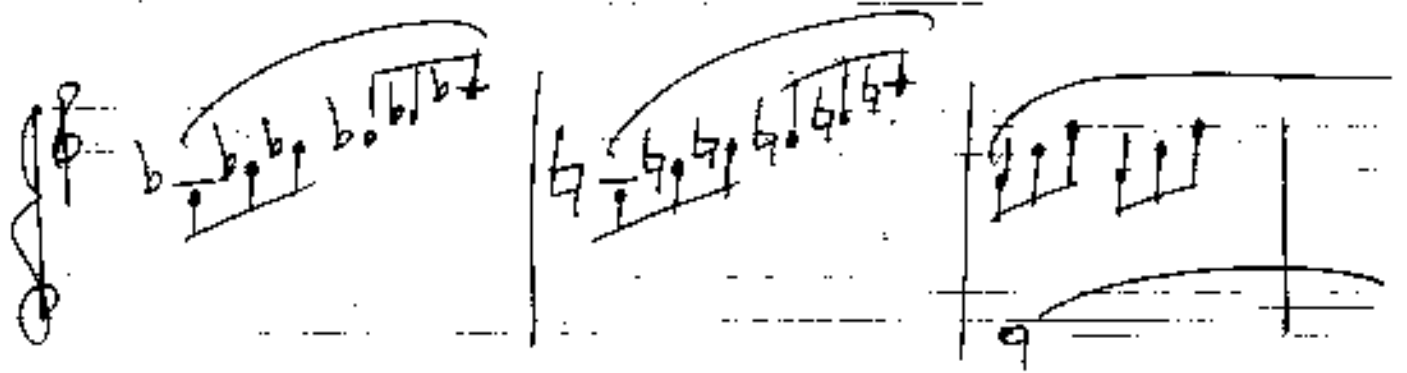
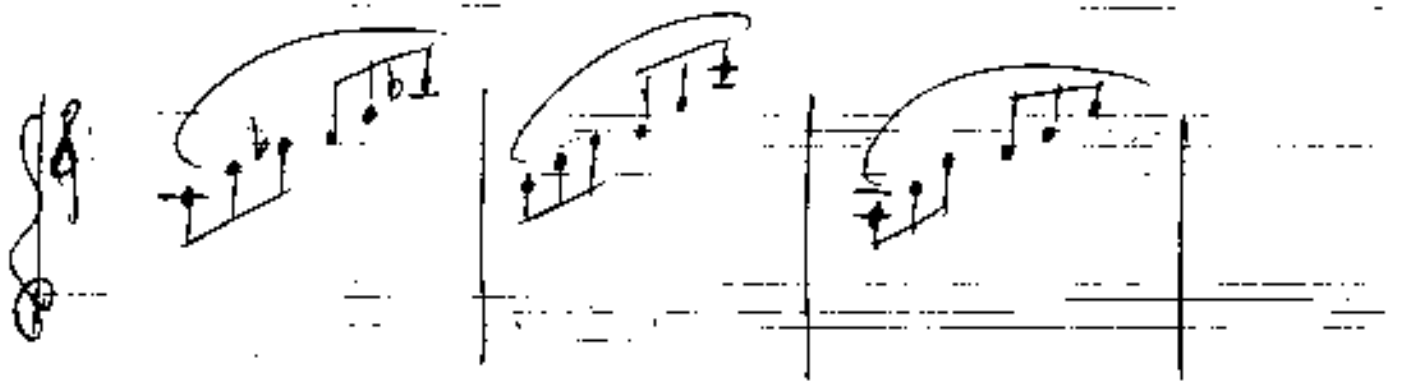
(poco rit)

Handwritten musical score for '(poco rit)'. It features a grand staff with three staves. The top staff is a treble clef with a key signature of two sharps (F# and C#) and a common time signature. The middle staff is an alto clef with a key signature of two sharps and a common time signature. The bottom staff is a bass clef with a key signature of two sharps and a common time signature. The music consists of several measures of notes, with some notes beamed together. The piece ends with a double bar line.

sele raschi (rubato)

Handwritten musical score for 'sele raschi (rubato)'. It features a grand staff with three staves. The top staff is a treble clef with a key signature of two sharps (F# and C#) and a common time signature. The middle staff is an alto clef with a key signature of two sharps and a common time signature. The bottom staff is a bass clef with a key signature of two sharps and a common time signature. The music consists of several measures of notes, with some notes beamed together. The piece ends with a double bar line.





Handwritten musical notation for the first system, featuring a grand staff with treble and bass clefs. The right hand has a complex chordal texture with accidentals, and the left hand has a melodic line with a slur.

Handwritten musical notation for the second system, continuing the piece with similar chordal and melodic patterns.

Handwritten musical notation for the third system, showing further development of the musical ideas.

Handwritten musical notation for the fourth system, concluding the page with a final melodic phrase in the left hand.



Handwritten musical notation on a grand staff. The right hand has a melodic line with a slur over the first two measures, containing notes G4, A4, B4, and C5. The left hand has a bass line with notes G3, F3, E3, and D3.

Handwritten musical notation on a grand staff. The right hand has a melodic line with a slur over the first two measures, containing notes G4, A4, B4, and C5. The left hand has a bass line with notes G3, F3, E3, and D3.

frei gehalten

Handwritten musical notation on a grand staff. The right hand has a melodic line with a slur over the first two measures, containing notes G4, A4, B4, and C5. The left hand has a bass line with notes G3, F3, E3, and D3.

Handwritten musical notation on a grand staff. The right hand has a melodic line with a slur over the first two measures, containing notes G4, A4, B4, and C5. The left hand has a bass line with notes G3, F3, E3, and D3.

Handwritten musical notation system 1. It consists of two staves. The upper staff is in treble clef and contains a whole note chord with notes G4, A4, B4, C5, and a sharp sign above the staff. The lower staff is in bass clef and contains a whole note chord with notes G2, A2, B2, C3, and a sharp sign above the staff. There are two accents (^) above the first measure. The system is divided into three measures by vertical bar lines, with the first measure containing the chords and the following two measures containing a diagonal slash.

Handwritten musical notation system 2. It consists of two staves. The upper staff is in treble clef and contains a whole note chord with notes G4, A4, B4, C5, and a sharp sign above the staff. The lower staff is in bass clef and contains a whole note chord with notes G2, A2, B2, C3, and a sharp sign above the staff. There are two accents (^) above the first measure. The system is divided into three measures by vertical bar lines, with the first measure containing the chords and the following two measures containing a diagonal slash.

Handwritten musical notation system 3. It consists of two staves. The upper staff is in treble clef and contains a whole note chord with notes G4, A4, B4, C5, and a sharp sign above the staff. The lower staff is in bass clef and contains a whole note chord with notes G2, A2, B2, C3, and a sharp sign above the staff. There are two accents (^) above the first measure. The system is divided into three measures by vertical bar lines, with the first measure containing the chords and the following two measures containing a diagonal slash.

Handwritten musical notation system 4. It consists of two staves. The upper staff is in treble clef and contains a whole note chord with notes G4, A4, B4, C5, and a sharp sign above the staff. The lower staff is in bass clef and contains a whole note chord with notes G2, A2, B2, C3, and a sharp sign above the staff. There are two accents (^) above the first measure. The system is divided into three measures by vertical bar lines, with the first measure containing the chords and the following two measures containing a diagonal slash.

*legato*

frei (alla Handlung)

Contralto (frei)

Handwritten musical notation for the first system. It features a treble clef and a key signature of one sharp (F#). The time signature is 6/4. The music consists of a melodic line with a slur over four measures, starting with a triplet of eighth notes. The bass line contains two whole notes. A fermata is placed over the first measure of the melodic line.

Handwritten musical notation for the second system. It features a treble clef and a key signature of one flat (Bb). The music consists of a melodic line with a slur over four measures, starting with a triplet of eighth notes. The bass line contains two whole notes.

Handwritten musical notation for the third system. It features a treble clef and a key signature of one sharp (F#). The music consists of a melodic line with a slur over four measures, starting with a triplet of eighth notes. The bass line contains two whole notes.

Handwritten musical notation for the fourth system. It features a treble clef and a key signature of one sharp (F#). The music consists of a melodic line with a slur over four measures, starting with a triplet of eighth notes. The bass line contains two whole notes.

Handwritten musical notation on a five-line staff. The key signature is one sharp (F#). The notation includes a treble clef, a common time signature, and a series of notes with stems and beams. A slur covers the first four measures. The notes are: B4, C5, D5, E5, F#5, G5, A5, B5, C6, D6, E6, F#6, G6, A6, B6, C7. There are some additional markings above the staff, possibly indicating fingerings or dynamics.

Handwritten musical notation on a five-line staff. The key signature is one sharp (F#). The notation includes a treble clef, a common time signature, and a series of notes with stems and beams. A slur covers the first four measures. The notes are: B4, C5, D5, E5, F#5, G5, A5, B5, C6, D6, E6, F#6, G6, A6, B6, C7. There are some additional markings below the staff, possibly indicating fingerings or dynamics.

Handwritten musical notation on a five-line staff. The key signature is one sharp (F#). The notation includes a treble clef, a common time signature, and a series of notes with stems and beams. A slur covers the first four measures. The notes are: B4, C5, D5, E5, F#5, G5, A5, B5, C6, D6, E6, F#6, G6, A6, B6, C7. There are some additional markings above the staff, possibly indicating fingerings or dynamics.

sehr ruhig fließend

Handwritten musical notation for the first system. It features a treble clef and a bass clef. The time signature is 4/8. A circled 'p' indicates piano. The music consists of two staves. The upper staff has a series of notes with slurs and accents. The lower staff has a series of notes with slurs and accents.

Handwritten musical notation for the second system. It features a treble clef and a bass clef. The music consists of two staves. The upper staff has a series of notes with slurs and accents. The lower staff has a series of notes with slurs and accents.

Handwritten musical notation for the third system. It features a treble clef and a bass clef. The music consists of two staves. The upper staff has a series of notes with slurs and accents. The lower staff has a series of notes with slurs and accents.

Handwritten musical notation for the first system. It consists of two staves. The upper staff is in treble clef and the lower staff is in bass clef. The music includes various notes, rests, and accidentals (sharps and flats). A slur covers the first two measures of the upper staff. The word "poco rit" is written below the second staff.

Handwritten musical notation for the second system. It consists of two staves. The upper staff is in treble clef and the lower staff is in bass clef. The music continues with similar notation to the first system, including notes, rests, and accidentals. A slur covers the first two measures of the upper staff.

Tango (rubio)

Handwritten musical notation for the "Tango (rubio)" section. It consists of two staves. The upper staff is in treble clef and the lower staff is in bass clef. The music includes various notes, rests, and accidentals. A slur covers the first two measures of the upper staff.

Handwritten musical notation for the final system. It consists of two staves. The upper staff is in treble clef and the lower staff is in bass clef. The music includes various notes, rests, and accidentals. A slur covers the first two measures of the upper staff.

(out)

Handwritten musical notation for the first system. It features a treble clef and a key signature of one flat (B-flat). The melody consists of several measures with various accidentals (sharps, flats, naturals) and a fermata over the final measure. The bass line is mostly empty with a few notes.

Handwritten musical notation for the second system. It features a treble clef and a key signature of one flat. The melody is characterized by a long, sustained note with a fermata, and several accidentals. The bass line has a few notes.

Kardany sochly (pre)

Handwritten musical notation for the third system. It features a treble clef and a key signature of one flat. The melody includes a circled 'P' and a fermata. The bass line is mostly empty.

Handwritten musical notation for the fourth system. It features a treble clef and a key signature of one flat. The melody includes a circled 'P' and a fermata. The bass line is mostly empty.

breit über nicht schleppend

steigend →

großes mit



Solo Musik



Handwritten musical notation for the first system, consisting of three staves. The top staff features a melodic line with various notes and rests, including a sequence of notes with stems pointing down. The middle and bottom staves provide harmonic support with sustained notes and some melodic movement. A vertical line separates the first measure from the second.

Handwritten musical notation for the second system, consisting of three staves. The notation continues from the first system, showing further development of the melodic and harmonic themes. The top staff has a more active melodic line with many notes and stems pointing down. The middle and bottom staves continue their harmonic roles.

Handwritten musical notation for the third system, consisting of three staves. This system concludes the piece with sustained notes in the lower staves and a final melodic phrase in the upper staff.

Handwritten musical notation for the first system, consisting of three staves. The top staff has a treble clef and contains notes with accidentals (b, #) and slurs. The middle staff has a treble clef and contains notes with accidentals and slurs. The bottom staff has a bass clef and contains notes with accidentals and slurs.

Handwritten musical notation for the second system, consisting of three staves. The top staff has a treble clef and contains notes with accidentals and slurs. The middle staff has a treble clef and contains notes with accidentals and slurs. The bottom staff has a bass clef and contains notes with accidentals and slurs.

Handwritten musical notation for the third system, consisting of three staves. The top staff has a treble clef and contains notes with accidentals and slurs. The middle staff has a treble clef and contains notes with accidentals and slurs. The bottom staff has a bass clef and contains notes with accidentals and slurs.

großes out

Handwritten musical notation on a five-line staff. The top staff contains a series of notes with stems pointing up, grouped by horizontal lines. The notes include a natural sign (n), a flat sign (b), and a sharp sign (#). The bottom staff contains notes with stems pointing down, including a natural sign (n) and a flat sign (b). Vertical bar lines divide the music into measures.

Handwritten musical notation on a five-line staff. The top staff features notes with stems pointing up, including a flat sign (b) and a sharp sign (#). The middle staff shows notes with stems pointing down, including a flat sign (b) and a sharp sign (#). The bottom staff contains notes with stems pointing down, including a flat sign (b) and a sharp sign (#). Vertical bar lines divide the music into measures.

Lunga

Handwritten musical notation on a five-line staff, showing a vertical line with a few notes and stems.

Handwritten musical notation on a five-line staff, showing a vertical line with several notes and stems.

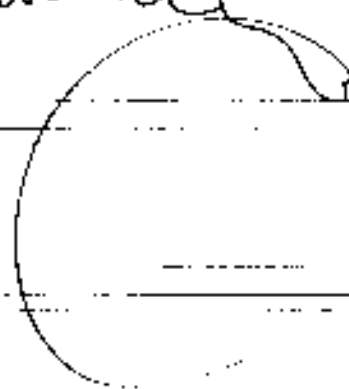
Handwritten signature in a cursive script, appearing to read "B. Hofmann".

Improvisationen für Orgel

April 1980

über (Betrachtet ihn in Schwitzen)

Jörg Scherhan



(1) richtig schreibend

Handwritten musical notation for the first system. It consists of two staves. The top staff is in treble clef with a 3/4 time signature. The bottom staff is in bass clef. The music includes notes with various accidentals (sharps, flats) and rests, connected by a slur.

Handwritten musical notation for the second system. It consists of two staves. The top staff is in treble clef and the bottom staff is in bass clef. The music continues with notes and accidentals, including a slur across the top staff.

Handwritten musical notation for the third system. It consists of two staves. The top staff is in treble clef and the bottom staff is in bass clef. The music concludes with notes and accidentals, including a slur across the top staff.



Handwritten musical notation for a piano piece, first system. It features a treble and bass clef with a 6/8 time signature. The music is written in a key with two sharps (F# and C#). The first measure has a whole note chord in the bass and a half note in the treble. The second measure has a half note in the bass and a half note in the treble. The third measure has a half note in the bass and a half note in the treble. The fourth measure has a half note in the bass and a half note in the treble. The fifth measure has a half note in the bass and a half note in the treble. The sixth measure has a half note in the bass and a half note in the treble.

Handwritten musical notation for a piano piece, second system. It features a treble and bass clef with a 6/8 time signature. The music is written in a key with two sharps (F# and C#). The first measure has a whole note chord in the bass and a half note in the treble. The second measure has a half note in the bass and a half note in the treble. The third measure has a half note in the bass and a half note in the treble. The fourth measure has a half note in the bass and a half note in the treble. The fifth measure has a half note in the bass and a half note in the treble. The sixth measure has a half note in the bass and a half note in the treble.

Handwritten musical notation for a piano piece, third system. It features a treble and bass clef with a 6/8 time signature. The music is written in a key with two sharps (F# and C#). The first measure has a whole note chord in the bass and a half note in the treble. The second measure has a half note in the bass and a half note in the treble. The third measure has a half note in the bass and a half note in the treble. The fourth measure has a half note in the bass and a half note in the treble. The fifth measure has a half note in the bass and a half note in the treble. The sixth measure has a half note in the bass and a half note in the treble.

Handwritten musical notation for a piano piece, fourth system. It features a treble and bass clef with a 6/8 time signature. The music is written in a key with two sharps (F# and C#). The first measure has a whole note chord in the bass and a half note in the treble. The second measure has a half note in the bass and a half note in the treble. The third measure has a half note in the bass and a half note in the treble. The fourth measure has a half note in the bass and a half note in the treble. The fifth measure has a half note in the bass and a half note in the treble. The sixth measure has a half note in the bass and a half note in the treble.

Handwritten musical notation for the first system, featuring a treble clef and a bass clef. The treble staff contains two measures of music with a slur over a series of notes, including accidentals (flats and naturals). The bass staff contains two measures with a slur over notes and accidentals.

Handwritten musical notation for the second system, featuring a treble clef and a bass clef. The treble staff contains two measures of music with a slur over a series of notes, including accidentals (flats and naturals). The bass staff contains two measures with a slur over notes and accidentals.

Handwritten musical notation for the third system, featuring a treble clef and a bass clef. The treble staff contains two measures of music with a slur over a series of notes, including accidentals (flats and naturals). The bass staff contains two measures with a slur over notes and accidentals.

Handwritten musical notation for the fourth system, featuring a treble clef and a bass clef. The treble staff contains two measures of music with a slur over a series of notes, including accidentals (flats and naturals). The bass staff contains two measures with a slur over notes and accidentals.



Handwritten musical notation for the first system. The treble staff contains two measures of complex chords, each with a fermata. The bass staff contains two measures of a simple melodic line with a fermata in the second measure.

Handwritten musical notation for the second system. The treble staff contains two measures of complex chords with fermatas. The bass staff contains two measures of a simple melodic line with a fermata in the second measure.

Handwritten musical notation for the third system. The treble staff contains a complex melodic line with many notes and a fermata. The bass staff contains a simple melodic line with a fermata.

Handwritten musical notation for the fourth system. The treble staff contains a complex melodic line with many notes and a fermata. The bass staff contains a simple melodic line with a fermata.

Handwritten musical notation for the first system. The treble clef staff contains two measures of music with a key signature of one flat (B-flat). The notes are grouped in a way that suggests a piecewise constant function. Below the staff, a graph shows a function that is constant at a low level in the first measure and jumps to a higher level in the second measure, with a vertical line indicating the jump point.

Handwritten musical notation for the second system. The treble clef staff contains two measures of music with a key signature of one flat (B-flat). The notes are grouped in a way that suggests a piecewise constant function. Below the staff, a graph shows a function that is constant at a low level in the first measure and jumps to a higher level in the second measure, with a vertical line indicating the jump point.

Handwritten musical notation for the third system. The treble clef staff contains two measures of music with a key signature of one flat (B-flat). The notes are grouped in a way that suggests a piecewise constant function. Below the staff, a graph shows a function that is constant at a low level in the first measure and jumps to a higher level in the second measure, with a vertical line indicating the jump point.

Handwritten musical notation for the fourth system. The treble clef staff contains two measures of music with a key signature of one flat (B-flat). The notes are grouped in a way that suggests a piecewise constant function. Below the staff, a graph shows a function that is constant at a low level in the first measure and jumps to a higher level in the second measure, with a vertical line indicating the jump point.

Handwritten musical notation for the first system. The treble clef staff contains three measures of chords with slurs and accents. The bass clef staff contains three measures of single notes with slurs and accents.

Handwritten musical notation for the second system. The treble clef staff shows chords with slurs and accents. The bass clef staff shows single notes with slurs and accents.

Handwritten musical notation for the third system. The treble clef staff contains chords with slurs and accents. The bass clef staff contains single notes with slurs and accents.

Handwritten musical notation for the fourth system. The treble clef staff contains chords with slurs and accents. The bass clef staff contains single notes with slurs and accents.

(rit.)

Handwritten musical notation for guitar. The top staff shows a melodic line with a slur over four measures. The bottom staff shows a bass line with a slur over four measures. The notation includes various chords and accidentals.

Mod. (A) rubato

Handwritten musical notation for piano. The top staff contains chords, and the bottom staff contains a melodic line with slurs.

Handwritten musical notation for piano. The top staff contains chords, and the bottom staff contains a melodic line with slurs.

Handwritten musical notation for piano. The top staff contains chords, and the bottom staff contains a melodic line with slurs.

Handwritten musical notation for the first system, consisting of two staves. The upper staff contains several chords and notes, while the lower staff features a melodic line with a large slur covering several measures.

brist (A)

Handwritten musical notation for the second system, including a double bar line. The notation shows a continuation of the musical piece with various notes and accidentals on both staves.

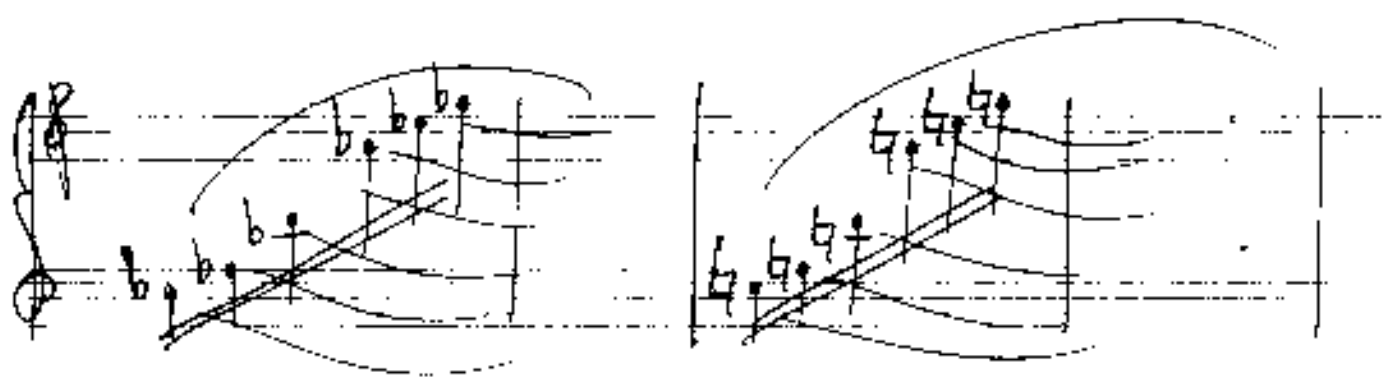
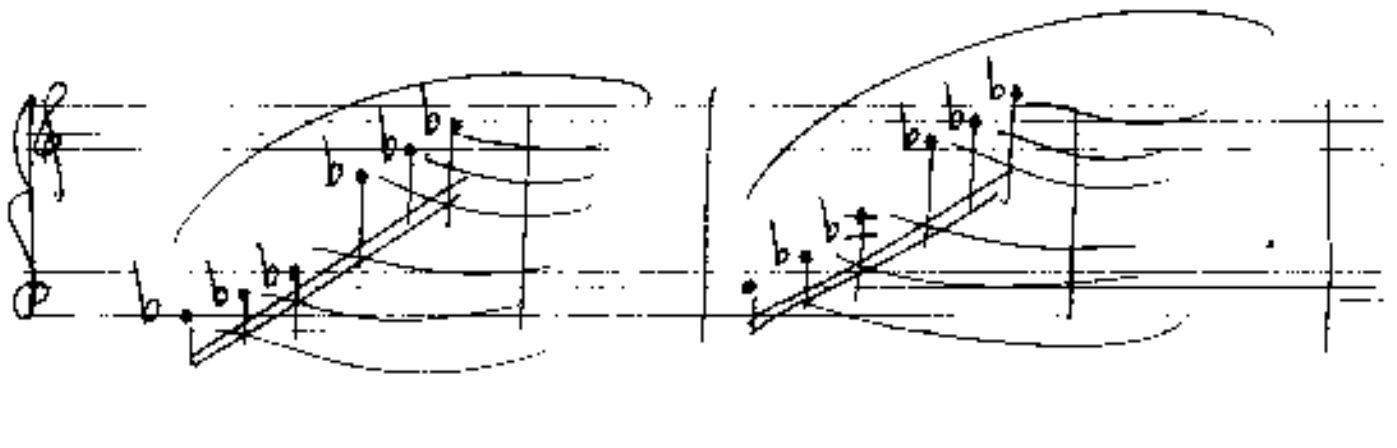
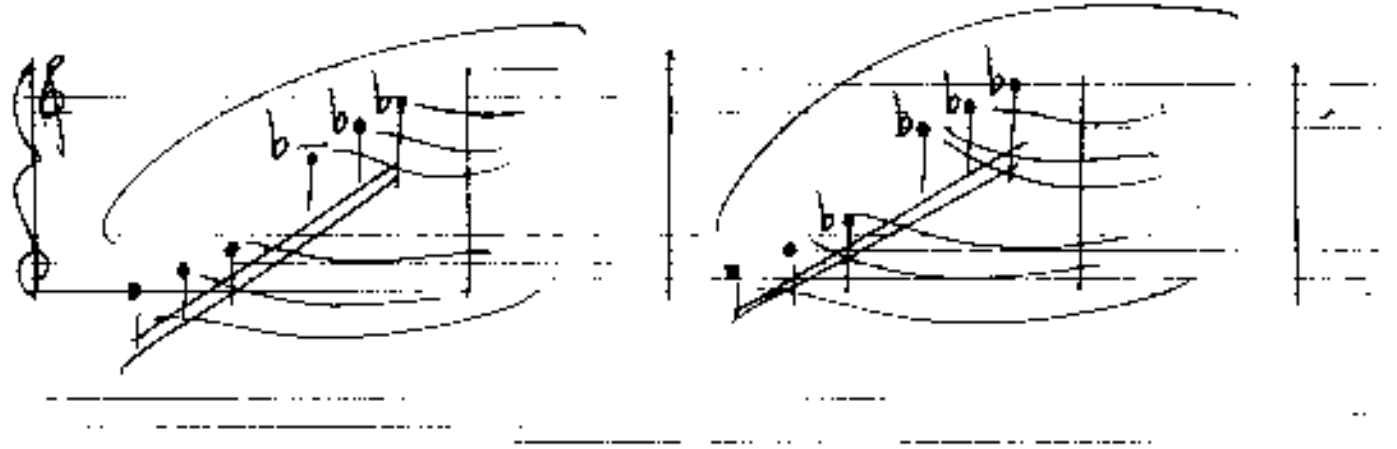
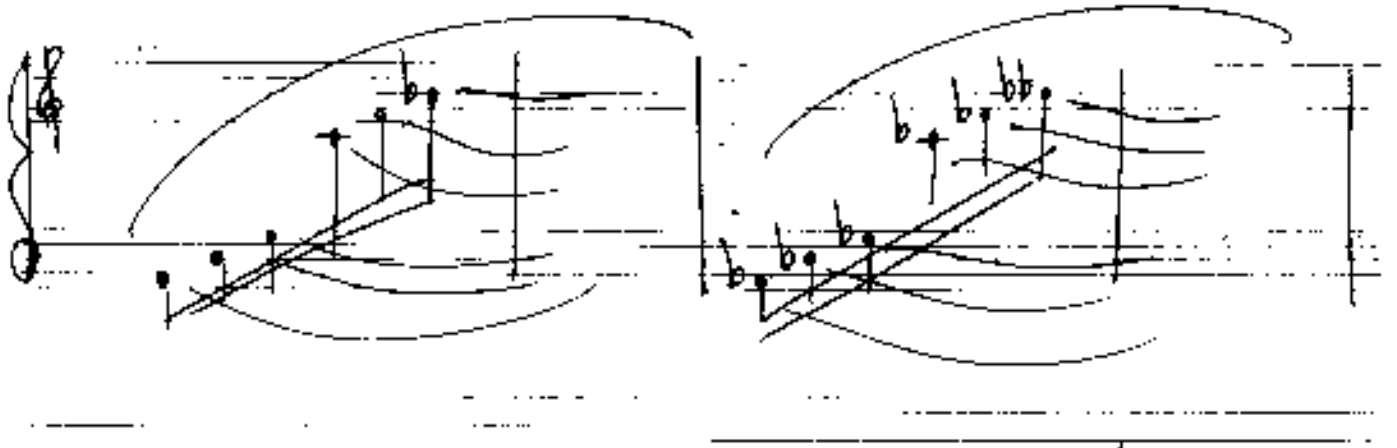
Handwritten musical notation for the third system, showing a sequence of notes and chords across two staves.

(mit

Brat (A)

Handwritten musical notation for the fourth system, showing notes and accidentals on two staves.

Handwritten musical notation for the fifth system, featuring a large slur and a circled 'f' marking. The notation is spread across two staves.



gr. x. h.

ADAGIO (♩) sehr langsam (schlicht)

Handwritten musical notation for the first system, featuring a treble and bass staff with a long slur over the top staff and various notes and chords.

Handwritten musical notation for the second system, featuring a treble and bass staff with a long slur over the top staff and various notes and chords.

*poco rit)* *sete tangram*

Handwritten musical notation for the third system, featuring a treble and bass staff with a long slur over the top staff and various notes and chords.

Handwritten musical notation for the fourth system, featuring a treble and bass staff with a long slur over the top staff and various notes and chords.



mit größter Ruhe

lunga

guit. -----

April  
1980

# Improvisationen für Orgel

April 1980

über (Betrachtet ihn in Schmerzen)

Adolf Scherz

lento

C pp

Handwritten musical notation for the first system. The treble staff contains notes with accidentals:  $b^{\flat}$ ,  $f^{\sharp}$ ,  $f^{\sharp}$ ,  $b^{\flat}$ ,  $f^{\sharp}$ ,  $f^{\sharp}$ ,  $b^{\flat}$ ,  $a$ ,  $b^{\flat}$ ,  $a$ . The bass staff contains whole notes:  $c$ ,  $e$ ,  $g$ ,  $b$ ,  $d$ ,  $f$ .

Handwritten musical notation for the second system. The treble staff contains notes with accidentals:  $a$ ,  $\#a$ ,  $a$ ,  $b^{\flat}a$ ,  $\#a$ ,  $\#a$ ,  $b^{\flat}a$ ,  $b^{\flat}a$ . The bass staff contains whole notes:  $c$ ,  $e$ ,  $g$ ,  $b$ ,  $d$ ,  $f$ .

Handwritten musical notation for the third system. The treble staff contains notes with accidentals:  $b^{\flat}a$ ,  $b^{\flat}a$ ,  $b^{\flat}a$ ,  $a$ ,  $a$ ,  $a$ ,  $\#a$ ,  $a$ ,  $a$ . A circled  $(b)$  is written below the treble staff. The bass staff contains notes with accidentals:  $c$ ,  $e$ ,  $g$ ,  $b^{\flat}a$ ,  $b^{\flat}a$ ,  $a$ ,  $b^{\flat}$ .

Handwritten musical notation for the fourth system. The treble staff contains notes with accidentals:  $a$ ,  $\#a$ ,  $\#a$ ,  $b^{\flat}a$ ,  $a$ ,  $b^{\flat}a$ ,  $b^{\flat}a$ ,  $b^{\flat}a$ . The bass staff contains notes with accidentals:  $c$ ,  $e$ ,  $g$ ,  $b^{\flat}a$ ,  $b^{\flat}a$ ,  $a$ ,  $c$ .

Handwritten musical notation for the first system, featuring a treble clef, a key signature of one sharp (F#), and a 4/8 time signature. The melody consists of three measures: the first has notes G4, A4, B4; the second has G4, A4, B4; the third has C5, B4. The bass line features chords with notes G2, A2, B2, C3, D3, E3, F3, G3, A3, B3, C4, D4, E4, F4, G4, A4, B4, C5.

(poco rit)

Handwritten musical notation for the second system, featuring a treble clef, a key signature of one sharp (F#), and a 4/8 time signature. The melody consists of three measures: the first has notes G4, A4, B4; the second has G4, A4, B4; the third has C5, B4. The bass line features chords with notes G2, A2, B2, C3, D3, E3, F3, G3, A3, B3, C4, D4, E4, F4, G4, A4, B4, C5.

Handwritten musical notation for the third system, featuring a treble clef, a key signature of one sharp (F#), and a 4/8 time signature. The melody consists of three measures: the first has notes G4, A4, B4; the second has G4, A4, B4; the third has C5, B4. The bass line features chords with notes G2, A2, B2, C3, D3, E3, F3, G3, A3, B3, C4, D4, E4, F4, G4, A4, B4, C5.

Handwritten musical notation for the fourth system, featuring a treble clef, a key signature of one sharp (F#), and a 4/8 time signature. The melody consists of three measures: the first has notes G4, A4, B4; the second has G4, A4, B4; the third has C5, B4. The bass line features chords with notes G2, A2, B2, C3, D3, E3, F3, G3, A3, B3, C4, D4, E4, F4, G4, A4, B4, C5.



Handwritten musical notation for the first system. The treble clef contains notes G, B, G, G. The bass clef contains notes B, G, #, G. There are vertical bar lines separating the measures.

Handwritten musical notation for the second system. The treble clef contains notes B, G, G. The bass clef contains notes B, G, G. There are vertical bar lines separating the measures.

*pesante*

Handwritten musical notation for the third system. The treble clef contains notes #, #, G. The bass clef contains notes G, B, G, G. There are vertical bar lines separating the measures.

Handwritten musical notation for the fourth system. The treble clef contains notes G, #, #, G. The bass clef contains notes G, B, G, G. There are vertical bar lines separating the measures.

(1)



Handwritten musical score for the first system. The treble clef part contains several chords with accidentals (sharps and flats). The bass clef part features a melodic line with notes and rests, including a final measure with a circled note.

*rubato* (frei gestalten)  
6

Handwritten musical score for the second system. The treble clef part shows a melodic line with a slur over several notes and a fermata. The bass clef part provides accompaniment with rhythmic patterns.

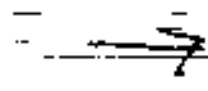
Handwritten musical score for the third system. The treble clef part continues the melodic line with a slur and fermata. The bass clef part continues the accompaniment with rhythmic patterns.

Handwritten musical notation for the first system, consisting of three measures. Each measure contains a melodic line with a slur over it and a corresponding chordal accompaniment. The first measure has a key signature of two flats (B-flat and E-flat). The second measure has a key signature of one flat (B-flat). The third measure has a key signature of two flats (B-flat and E-flat). The notation is written on a grand staff with a treble clef on the upper staff and a bass clef on the lower staff.

Handwritten musical notation for the second system, consisting of three measures. Each measure contains a melodic line with a slur over it and a corresponding chordal accompaniment. The first measure has a key signature of one flat (B-flat). The second measure has a key signature of three flats (B-flat, E-flat, and A-flat). The third measure has a key signature of one flat (B-flat). The notation is written on a grand staff with a treble clef on the upper staff and a bass clef on the lower staff.

Handwritten musical notation for the third system, consisting of three measures. Each measure contains a melodic line with a slur over it and a corresponding chordal accompaniment. The first measure has a key signature of two flats (B-flat and E-flat). The second measure has a key signature of one flat (B-flat). The third measure has a key signature of two flats (B-flat and E-flat). The notation is written on a grand staff with a treble clef on the upper staff and a bass clef on the lower staff.

sonnig treibend (bewegt) (frei — eruet)



Epocant...)

(A)

frei (Kardengastig)

Prestissimo

Handwritten musical notation on a single staff, featuring a treble clef and a series of sixteenth-note chords that ascend in pitch across the staff.

Handwritten musical notation on a grand staff (treble and bass clefs), showing a melodic line with a slur and several chords with handwritten annotations like "(b)" and "(act)". A double bar line is present at the end of the section.

~~octa bner~~ ~~musical~~

Handwritten musical notation on a grand staff, consisting of two measures. The notation includes quarter notes and eighth notes with various accidentals (sharps and flats) and slurs.

Handwritten musical notation on three staves. The top staff contains notes G, A, Bb, A, G, F, E, D. The middle staff contains notes G, A, Bb, A, G, F, E, D. The bottom staff contains notes G, A, Bb, A, G, F, E, D.

graves gut...

Handwritten musical notation on three staves. The top staff contains notes G, A, Bb, A, G, F, E, D. The middle staff contains notes G, A, Bb, A, G, F, E, D. The bottom staff contains notes G, A, Bb, A, G, F, E, D.

Lunga

Handwritten musical notation on three staves. The top staff contains notes G, A, Bb, A, G, F, E, D. The middle staff contains notes G, A, Bb, A, G, F, E, D. The bottom staff contains notes G, A, Bb, A, G, F, E, D.

April 1990  
*[Signature]*