

L.v. BEETHOVEN



W.A. MOZART



# NOTENHEFT

F. SCHUBERT



J. HAYDN



J. STRAUSS





(A)

lesto (frei) solo langsam

Handwritten musical score for strings. The score is divided into four measures. The first measure has a dynamic marking of  $ppp$  (consorzio) and a note with a sharp sign. The second measure has a dynamic marking of  $pp$  and a note with a sharp sign. The third and fourth measures have dynamic markings of  $pp$ . The score includes a 'Pedal' section indicated by a bracket under the first two measures. There are also some handwritten notes and symbols, including a large 'L' and a '4'.

Handwritten musical score for strings. The score is divided into four measures. The first measure has a dynamic marking of  $pp$  and a note with a sharp sign. The second measure has a dynamic marking of  $pp$  and a note with a sharp sign. The third and fourth measures have dynamic markings of  $pp$  and notes with sharp signs. The score includes various note values and dynamic markings.

Handwritten musical score for strings. The score is divided into four measures. The first measure has a dynamic marking of  $pp$  and a note with a sharp sign. The second measure has a dynamic marking of  $pp$  and a note with a sharp sign. The third and fourth measures have dynamic markings of  $pp$  and notes with sharp signs. The score includes various note values and dynamic markings.

(dicht. Trem.)

Handwritten musical score for the first system. It consists of two staves: a piano staff (top) and a bass staff (bottom). The piano staff begins with a treble clef, a key signature of one flat (B-flat), and a common time signature. It contains several measures of music, including a half note with a fermata, followed by a series of notes with dynamic markings such as *ppp* and *cresc.* The bass staff contains corresponding notes and rests. A bracket above the piano staff spans the first two measures, and another bracket spans the last two measures.

Handwritten musical score for the second system. It consists of two staves: a piano staff (top) and a bass staff (bottom). The piano staff begins with a treble clef, a key signature of one flat, and a common time signature. It contains several measures of music, including a half note with a fermata, followed by a series of notes with dynamic markings such as *f* and *ff*. The bass staff contains corresponding notes and rests. A circled *ped.* is written in the piano staff, and a *Pedal aus* instruction is written at the end of the system. A bracket above the piano staff spans the first two measures, and another bracket spans the last two measures.

Handwritten musical score for the third system. It consists of two staves: a piano staff (top) and a bass staff (bottom). The piano staff begins with a treble clef, a key signature of one flat, and a common time signature. It contains several measures of music, including a half note with a fermata, followed by a series of notes with dynamic markings such as *ppp* and *f*. The bass staff contains corresponding notes and rests. A *Pedal* instruction is written at the beginning of the system. A wavy line is drawn at the end of the system, indicating a tremolo or similar effect. A bracket above the piano staff spans the first two measures, and another bracket spans the last two measures.

(B)

*f* *mf* (*rubato*)

ff

ppp

ppp

ff

ppp

Pedal

*brist* (*nicht schleppen*)

ff

maximale Bewegungen in höchster Lage

Handwritten musical score for strings and woodwinds. The top staff shows a melodic line with slurs and accents. Below are two staves for woodwinds (flute and clarinet) and two for strings (violin and viola). The woodwinds play rhythmic patterns of eighth notes. The strings play chords and moving lines.

Conte (s) (Pnei) (dicht Treue.)

Handwritten musical score for vocal and piano accompaniment. The vocal line is on a single staff with lyrics. The piano accompaniment consists of three staves. The piano part includes chords and melodic fragments with dynamic markings like "pp" and "ff".

Handwritten musical score for piano accompaniment. It features a single staff with a melodic line and a bass line. The melodic line has slurs and dynamic markings. The bass line is mostly rests with some notes. There are handwritten notes on the left side.

(A)

Handwritten musical score for the first system. It features a vocal line at the top with notes and lyrics "CORO SORD." and a piano accompaniment below. The piano part includes a "Pedal (pp)" instruction and various chord symbols such as  $b8$  and  $8$ . A large slur covers the vocal line across four measures.

Handwritten musical score for the second system. It continues the vocal and piano parts. The piano accompaniment includes dynamic markings like  $pp$  and  $ff$ , and chord symbols such as  $b8$  and  $8$ . A slur is present over the vocal line in the second measure.

Handwritten musical score for the third system. It shows a vocal line with notes and a piano accompaniment. The piano part includes a note with the instruction "verklungen lassen" (let ring) and a vertical wavy line on the right side of the staff.

(c)

quadrato - except - frei

quadrato

breit

quadrato





(a) leuto

CON SORDO.

12  
8

Pedal

pp

Luoga  
Overklingen lassen

3 Miniaturen

(P) für Violine + Klavier 1980

Teil 2

(H. Scherbanin)

Sehr langsam

(pist. ---)

Handwritten musical score for the first system. The piano part (top) includes a treble clef, a key signature of one flat (B-flat), and a dynamic marking of *ppp*. The piano part contains a half note chord (F, C, G) and a quarter note chord (F, C, G). The pedal part (bottom) includes a bass clef and a dynamic marking of *pp*. It contains a half note chord (F, C, G) and a quarter note chord (F, C, G). The system concludes with a double bar line and a fermata over the final notes.

(♩) arco

Handwritten musical score for the second system. The piano part (top) includes a treble clef, a key signature of one flat (B-flat), and a dynamic marking of *fff*. It contains a half note chord (F, C, G) and a quarter note chord (F, C, G). The pedal part (bottom) includes a bass clef and a dynamic marking of *pp*. It contains a half note chord (F, C, G) and a quarter note chord (F, C, G). The system concludes with a double bar line and a fermata over the final notes.

Handwritten musical score for the third system. The piano part (top) includes a treble clef, a key signature of one flat (B-flat), and a dynamic marking of *pp*. It contains a half note chord (F, C, G) and a quarter note chord (F, C, G). The pedal part (bottom) includes a bass clef and a dynamic marking of *pp*. It contains a half note chord (F, C, G) and a quarter note chord (F, C, G). The system concludes with a double bar line and a fermata over the final notes.

qu. mit *chiaro*

81

ppp

dicht Trem.

$f > p > ppp$

Pedal

8

über Saiten  
runde Bewegungen

22  
24

Waga

ppp

(E)

sehr breit

Handwritten musical score for piano, labeled "sehr breit". The score is written on a single staff with a treble clef and a 4/4 time signature. It contains several measures of music with various rhythmic values and dynamic markings, including "ff", "f", and "p". A circled "2" is present in the middle section. The piece concludes with a "Pedale" marking.

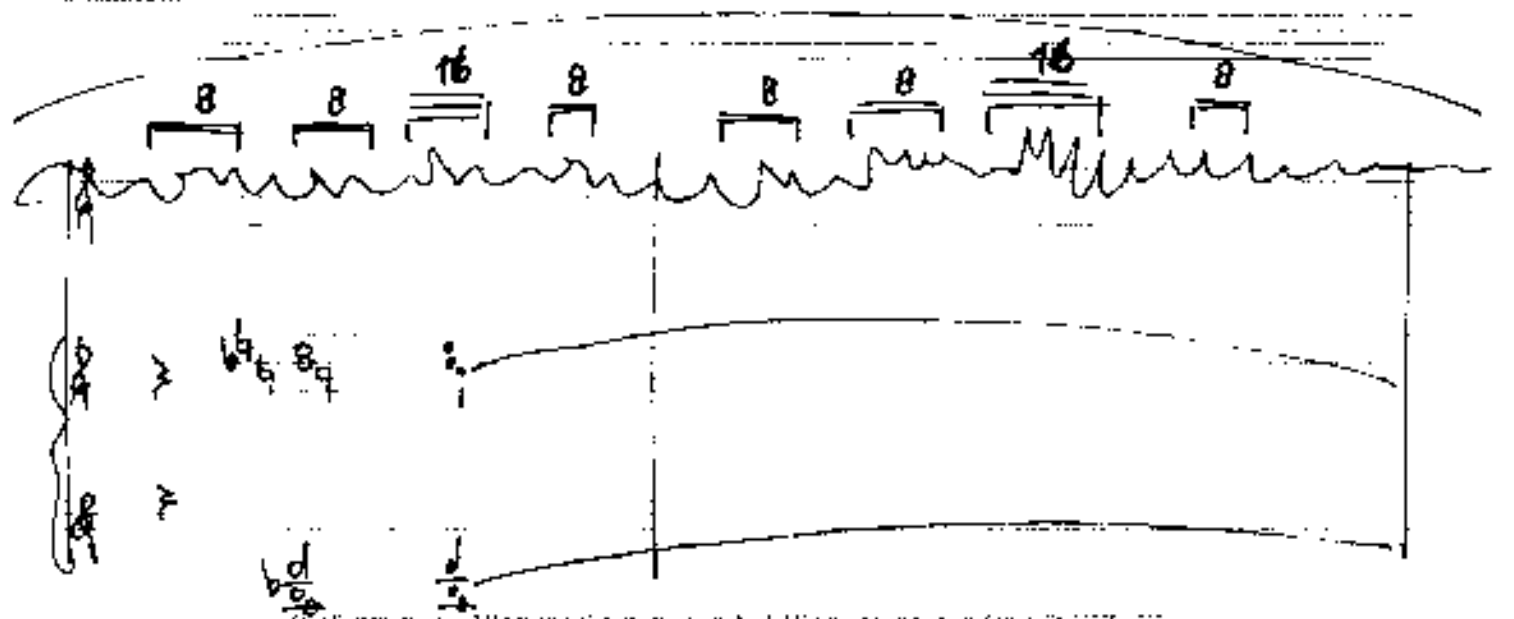
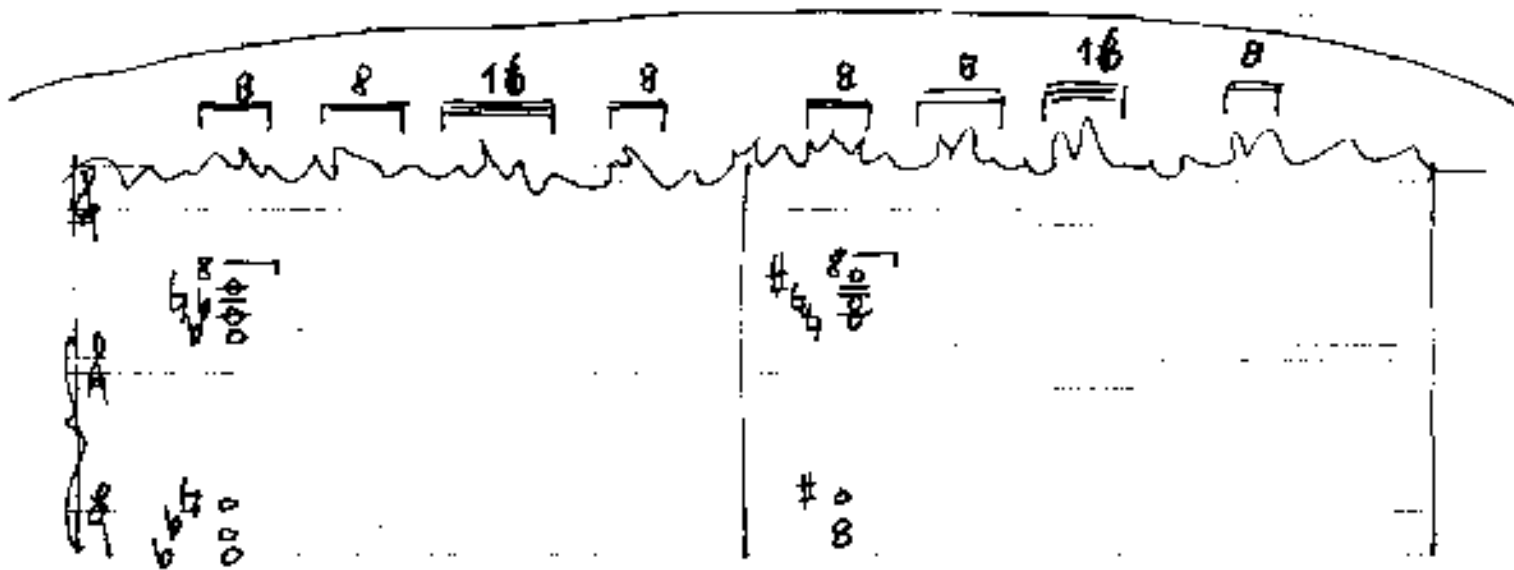
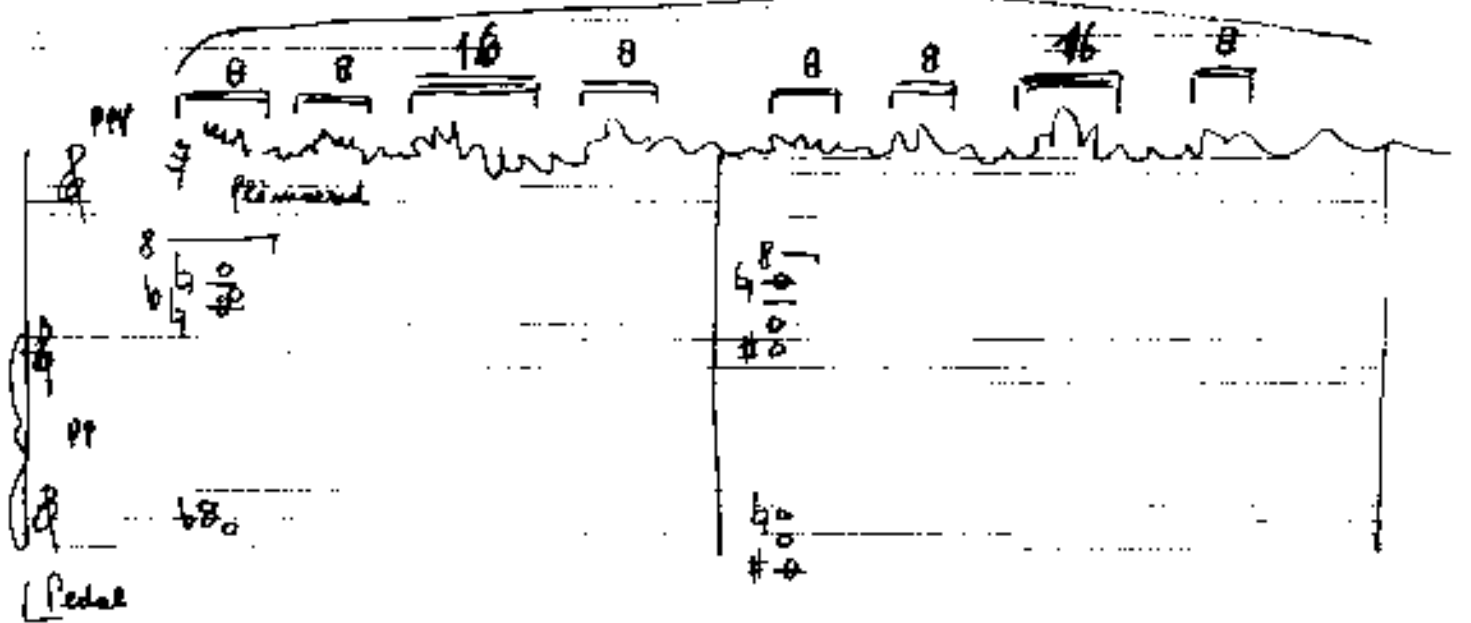
arco

Handwritten musical score for piano, labeled "arco". The score is written on a single staff with a treble clef and a 4/4 time signature. It contains several measures of music with various rhythmic values and dynamic markings, including "pp" and "f". A circled "2" is present in the first measure. The piece concludes with a "Pedale" marking.

con sord.

Handwritten musical score for piano, labeled "con sord.". The score is written on a single staff with a treble clef and a 4/4 time signature. It contains several measures of music with various rhythmic values and dynamic markings, including "ffpp" and "f". A circled "2" is present in the first measure. The piece concludes with a "Pedale" marking.

licht (sola lichte lage)



Handwritten musical score for the first system. It features a treble clef on the left and a bass clef on the right. Above the treble staff, there are several horizontal lines with numbers 8, 8, 16, 8, 8, 8, 16, and 16 written above them. The treble staff contains a melodic line with various notes and rests. The bass staff contains a bass line with notes and rests. There are some handwritten annotations and markings throughout the system.

(rit...)

Handwritten musical score for the second system. It features a treble clef on the left and a bass clef on the right. The treble staff contains a melodic line with notes and rests, including some dynamic markings like "ff" and "p". The bass staff contains a bass line with notes and rests. There are some handwritten annotations and markings throughout the system.



(out ..)

Handwritten musical score for piano. The score consists of three staves. The top staff has a treble clef and a key signature of one sharp (F#). The middle staff has a bass clef and a key signature of one sharp (F#). The bottom staff is labeled "Pedale" and has a key signature of one sharp (F#). A large slur covers the first two staves, starting from the beginning and ending at the end of the first measure. The notes under the slur are: G4, A4, B4, C5, D5, E5, F#5, G5, A5, B5, C6, D6, E6, F#6, G6, A6, B6, C7, D7, E7, F#7, G7, A7, B7, C8, D8, E8, F#8, G8, A8, B8, C9, D9, E9, F#9, G9, A9, B9, C10, D10, E10, F#10, G10, A10, B10, C11, D11, E11, F#11, G11, A11, B11, C12, D12, E12, F#12, G12, A12, B12, C13, D13, E13, F#13, G13, A13, B13, C14, D14, E14, F#14, G14, A14, B14, C15, D15, E15, F#15, G15, A15, B15, C16, D16, E16, F#16, G16, A16, B16, C17, D17, E17, F#17, G17, A17, B17, C18, D18, E18, F#18, G18, A18, B18, C19, D19, E19, F#19, G19, A19, B19, C20, D20, E20, F#20, G20, A20, B20, C21, D21, E21, F#21, G21, A21, B21, C22, D22, E22, F#22, G22, A22, B22, C23, D23, E23, F#23, G23, A23, B23, C24, D24, E24, F#24, G24, A24, B24, C25, D25, E25, F#25, G25, A25, B25, C26, D26, E26, F#26, G26, A26, B26, C27, D27, E27, F#27, G27, A27, B27, C28, D28, E28, F#28, G28, A28, B28, C29, D29, E29, F#29, G29, A29, B29, C30, D30, E30, F#30, G30, A30, B30, C31, D31, E31, F#31, G31, A31, B31, C32, D32, E32, F#32, G32, A32, B32, C33, D33, E33, F#33, G33, A33, B33, C34, D34, E34, F#34, G34, A34, B34, C35, D35, E35, F#35, G35, A35, B35, C36, D36, E36, F#36, G36, A36, B36, C37, D37, E37, F#37, G37, A37, B37, C38, D38, E38, F#38, G38, A38, B38, C39, D39, E39, F#39, G39, A39, B39, C40, D40, E40, F#40, G40, A40, B40, C41, D41, E41, F#41, G41, A41, B41, C42, D42, E42, F#42, G42, A42, B42, C43, D43, E43, F#43, G43, A43, B43, C44, D44, E44, F#44, G44, A44, B44, C45, D45, E45, F#45, G45, A45, B45, C46, D46, E46, F#46, G46, A46, B46, C47, D47, E47, F#47, G47, A47, B47, C48, D48, E48, F#48, G48, A48, B48, C49, D49, E49, F#49, G49, A49, B49, C50, D50, E50, F#50, G50, A50, B50, C51, D51, E51, F#51, G51, A51, B51, C52, D52, E52, F#52, G52, A52, B52, C53, D53, E53, F#53, G53, A53, B53, C54, D54, E54, F#54, G54, A54, B54, C55, D55, E55, F#55, G55, A55, B55, C56, D56, E56, F#56, G56, A56, B56, C57, D57, E57, F#57, G57, A57, B57, C58, D58, E58, F#58, G58, A58, B58, C59, D59, E59, F#59, G59, A59, B59, C60, D60, E60, F#60, G60, A60, B60, C61, D61, E61, F#61, G61, A61, B61, C62, D62, E62, F#62, G62, A62, B62, C63, D63, E63, F#63, G63, A63, B63, C64, D64, E64, F#64, G64, A64, B64, C65, D65, E65, F#65, G65, A65, B65, C66, D66, E66, F#66, G66, A66, B66, C67, D67, E67, F#67, G67, A67, B67, C68, D68, E68, F#68, G68, A68, B68, C69, D69, E69, F#69, G69, A69, B69, C70, D70, E70, F#70, G70, A70, B70, C71, D71, E71, F#71, G71, A71, B71, C72, D72, E72, F#72, G72, A72, B72, C73, D73, E73, F#73, G73, A73, B73, C74, D74, E74, F#74, G74, A74, B74, C75, D75, E75, F#75, G75, A75, B75, C76, D76, E76, F#76, G76, A76, B76, C77, D77, E77, F#77, G77, A77, B77, C78, D78, E78, F#78, G78, A78, B78, C79, D79, E79, F#79, G79, A79, B79, C80, D80, E80, F#80, G80, A80, B80, C81, D81, E81, F#81, G81, A81, B81, C82, D82, E82, F#82, G82, A82, B82, C83, D83, E83, F#83, G83, A83, B83, C84, D84, E84, F#84, G84, A84, B84, C85, D85, E85, F#85, G85, A85, B85, C86, D86, E86, F#86, G86, A86, B86, C87, D87, E87, F#87, G87, A87, B87, C88, D88, E88, F#88, G88, A88, B88, C89, D89, E89, F#89, G89, A89, B89, C90, D90, E90, F#90, G90, A90, B90, C91, D91, E91, F#91, G91, A91, B91, C92, D92, E92, F#92, G92, A92, B92, C93, D93, E93, F#93, G93, A93, B93, C94, D94, E94, F#94, G94, A94, B94, C95, D95, E95, F#95, G95, A95, B95, C96, D96, E96, F#96, G96, A96, B96, C97, D97, E97, F#97, G97, A97, B97, C98, D98, E98, F#98, G98, A98, B98, C99, D99, E99, F#99, G99, A99, B99, C100, D100, E100, F#100, G100, A100, B100, C101, D101, E101, F#101, G101, A101, B101, C102, D102, E102, F#102, G102, A102, B102, C103, D103, E103, F#103, G103, A103, B103, C104, D104, E104, F#104, G104, A104, B104, C105, D105, E105, F#105, G105, A105, B105, C106, D106, E106, F#106, G106, A106, B106, C107, D107, E107, F#107, G107, A107, B107, C108, D108, E108, F#108, G108, A108, B108, C109, D109, E109, F#109, G109, A109, B109, C110, D110, E110, F#110, G110, A110, B110, C111, D111, E111, F#111, G111, A111, B111, C112, D112, E112, F#112, G112, A112, B112, C113, D113, E113, F#113, G113, A113, B113, C114, D114, E114, F#114, G114, A114, B114, C115, D115, E115, F#115, G115, A115, B115, C116, D116, E116, F#116, G116, A116, B116, C117, D117, E117, F#117, G117, A117, B117, C118, D118, E118, F#118, G118, A118, B118, C119, D119, E119, F#119, G119, A119, B119, C120, D120, E120, F#120, G120, A120, B120, C121, D121, E121, F#121, G121, A121, B121, C122, D122, E122, F#122, G122, A122, B122, C123, D123, E123, F#123, G123, A123, B123, C124, D124, E124, F#124, G124, A124, B124, C125, D125, E125, F#125, G125, A125, B125, C126, D126, E126, F#126, G126, A126, B126, C127, D127, E127, F#127, G127, A127, B127, C128, D128, E128, F#128, G128, A128, B128, C129, D129, E129, F#129, G129, A129, B129, C130, D130, E130, F#130, G130, A130, B130, C131, D131, E131, F#131, G131, A131, B131, C132, D132, E132, F#132, G132, A132, B132, C133, D133, E133, F#133, G133, A133, B133, C134, D134, E134, F#134, G134, A134, B134, C135, D135, E135, F#135, G135, A135, B135, C136, D136, E136, F#136, G136, A136, B136, C137, D137, E137, F#137, G137, A137, B137, C138, D138, E138, F#138, G138, A138, B138, C139, D139, E139, F#139, G139, A139, B139, C140, D140, E140, F#140, G140, A140, B140, C141, D141, E141, F#141, G141, A141, B141, C142, D142, E142, F#142, G142, A142, B142, C143, D143, E143, F#143, G143, A143, B143, C144, D144, E144, F#144, G144, A144, B144, C145, D145, E145, F#145, G145, A145, B145, C146, D146, E146, F#146, G146, A146, B146, C147, D147, E147, F#147, G147, A147, B147, C148, D148, E148, F#148, G148, A148, B148, C149, D149, E149, F#149, G149, A149, B149, C150, D150, E150, F#150, G150, A150, B150, C151, D151, E151, F#151, G151, A151, B151, C152, D152, E152, F#152, G152, A152, B152, C153, D153, E153, F#153, G153, A153, B153, C154, D154, E154, F#154, G154, A154, B154, C155, D155, E155, F#155, G155, A155, B155, C156, D156, E156, F#156, G156, A156, B156, C157, D157, E157, F#157, G157, A157, B157, C158, D158, E158, F#158, G158, A158, B158, C159, D159, E159, F#159, G159, A159, B159, C160, D160, E160, F#160, G160, A160, B160, C161, D161, E161, F#161, G161, A161, B161, C162, D162, E162, F#162, G162, A162, B162, C163, D163, E163, F#163, G163, A163, B163, C164, D164, E164, F#164, G164, A164, B164, C165, D165, E165, F#165, G165, A165, B165, C166, D166, E166, F#166, G166, A166, B166, C167, D167, E167, F#167, G167, A167, B167, C168, D168, E168, F#168, G168, A168, B168, C169, D169, E169, F#169, G169, A169, B169, C170, D170, E170, F#170, G170, A170, B170, C171, D171, E171, F#171, G171, A171, B171, C172, D172, E172, F#172, G172, A172, B172, C173, D173, E173, F#173, G173, A173, B173, C174, D174, E174, F#174, G174, A174, B174, C175, D175, E175, F#175, G175, A175, B175, C176, D176, E176, F#176, G176, A176, B176, C177, D177, E177, F#177, G177, A177, B177, C178, D178, E178, F#178, G178, A178, B178, C179, D179, E179, F#179, G179, A179, B179, C180, D180, E180, F#180, G180, A180, B180, C181, D181, E181, F#181, G181, A181, B181, C182, D182, E182, F#182, G182, A182, B182, C183, D183, E183, F#183, G183, A183, B183, C184, D184, E184, F#184, G184, A184, B184, C185, D185, E185, F#185, G185, A185, B185, C186, D186, E186, F#186, G186, A186, B186, C187, D187, E187, F#187, G187, A187, B187, C188, D188, E188, F#188, G188, A188, B188, C189, D189, E189, F#189, G189, A189, B189, C190, D190, E190, F#190, G190, A190, B190, C191, D191, E191, F#191, G191, A191, B191, C192, D192, E192, F#192, G192, A192, B192, C193, D193, E193, F#193, G193, A193, B193, C194, D194, E194, F#194, G194, A194, B194, C195, D195, E195, F#195, G195, A195, B195, C196, D196, E196, F#196, G196, A196, B196, C197, D197, E197, F#197, G197, A197, B197, C198, D198, E198, F#198, G198, A198, B198, C199, D199, E199, F#199, G199, A199, B199, C200, D200, E200, F#200, G200, A200, B200, C201, D201, E201, F#201, G201, A201, B201, C202, D202, E202, F#202, G202, A202, B202, C203, D203, E203, F#203, G203, A203, B203, C204, D204, E204, F#204, G204, A204, B204, C205, D205, E205, F#205, G205, A205, B205, C206, D206, E206, F#206, G206, A206, B206, C207, D207, E207, F#207, G207, A207, B207, C208, D208, E208, F#208, G208, A208, B208, C209, D209, E209, F#209, G209, A209, B209, C210, D210, E210, F#210, G210, A210, B210, C211, D211, E211, F#211, G211, A211, B211, C212, D212, E212, F#212, G212, A212, B212, C213, D213, E213, F#213, G213, A213, B213, C214, D214, E214, F#214, G214, A214, B214, C215, D215, E215, F#215, G215, A215, B215, C216, D216, E216, F#216, G216, A216, B216, C217, D217, E217, F#217, G217, A217, B217, C218, D218, E218, F#218, G218, A218, B218, C219, D219, E219, F#219, G219, A219, B219, C220, D220, E220, F#220, G220, A220, B220, C221, D221, E221, F#221, G221, A221, B221, C222, D222, E222, F#222, G222, A222, B222, C223, D223, E223, F#223, G223, A223, B223, C224, D224, E224, F#224, G224, A224, B224, C225, D225, E225, F#225, G225, A225, B225, C226, D226, E226, F#226, G226, A226, B226, C227, D227, E227, F#227, G227, A227, B227, C228, D228, E228, F#228, G228, A228, B228, C229, D229, E229, F#229, G229, A229, B229, C230, D230, E230, F#230, G230, A230, B230, C231, D231, E231, F#231, G231, A231, B231, C232, D232, E232, F#232, G232, A232, B232, C233, D233, E233, F#233, G233, A233, B233, C234, D234, E234, F#234, G234, A234, B234, C235, D235, E235, F#235, G235, A235, B235, C236, D236, E236, F#236, G236, A236, B236, C237, D237, E237, F#237, G237, A237, B237, C238, D238, E238, F#238, G238, A238, B238, C239, D239, E239, F#239, G239, A239, B239, C240, D240, E240, F#240, G240, A240, B240, C241, D241, E241, F#241, G241, A241, B241, C242, D242, E242, F#242, G242, A242, B242, C243, D243, E243, F#243, G243, A243, B243, C244, D244, E244, F#244, G244, A244, B244, C245, D245, E245, F#245, G245, A245, B245, C246, D246, E246, F#246, G246, A246, B246, C247, D247, E247, F#247, G247, A247, B247, C248, D248, E248, F#248, G248, A248, B248, C249, D249, E249, F#249, G249, A249, B249, C250, D250, E250, F#250, G250, A250, B250, C251, D251, E251, F#251, G251, A251, B251, C252, D252, E252, F#252, G252, A252, B252, C253, D253, E253, F#253, G253, A253, B253, C254, D254, E254, F#254, G254, A254, B254, C255, D255, E255, F#255, G255, A255, B255, C256, D256, E256, F#256, G256, A256, B256, C257, D257, E257, F#257, G257, A257, B257, C258, D258, E258, F#258, G258, A258, B258, C259, D259, E259, F#259, G259, A259, B259, C260, D260, E260, F#260, G260, A260, B260, C261, D261, E261, F#261, G261, A261, B261, C262, D262, E262, F#262, G262, A262, B262, C263, D263, E263, F#263, G263, A263, B263, C264, D264, E264, F#264, G264, A264, B264, C265, D265, E265, F#265, G265, A265, B265, C266, D266, E266, F#266, G266, A266, B266, C267, D267, E267, F#267, G267, A267, B267, C268, D268, E268, F#268, G268, A268, B268, C269, D269, E269, F#269, G269, A269, B269, C270, D270, E270, F#270, G270, A270, B270, C271, D271, E271, F#271, G271, A271, B271, C272, D272, E272, F#272, G272, A272, B272, C273, D273, E273, F#273, G273, A273, B273, C274, D274, E274, F#274, G274, A274, B274, C275, D275, E275, F#275, G275, A275, B275, C276, D276, E276, F#276, G276, A276, B276, C277, D277, E277, F#277, G277, A277, B277, C278, D278, E278, F#278, G278, A278, B278, C279, D279, E279, F#279, G279, A279, B279, C280, D280, E280, F#280, G280, A280, B280, C281, D281, E281, F#281, G281, A281, B281, C282, D282, E282, F#282, G282, A282, B282, C283, D283, E283, F#283, G283, A283, B283, C284, D284, E284, F#284, G284, A284, B284, C285, D285, E285, F#285, G285, A285, B285, C286, D286, E286, F#286, G286, A286, B286, C287, D287, E287, F#287, G287, A287, B287, C288, D288, E288, F#288, G288, A288, B288, C289, D289, E289, F#289, G289, A289, B289, C290, D290, E290, F#290, G290, A290, B290, C291, D291, E291, F#291, G291, A291, B291, C292, D292, E292, F#292, G292, A292, B292, C293, D293, E293, F#293, G293, A293, B293, C294, D294, E294, F#294, G294, A294, B294, C295, D295, E295, F#295, G295, A295, B295, C296, D296, E296, F#296, G296, A296, B296, C297, D297, E297, F#297, G297, A297, B297, C298, D298, E298, F#298, G298, A298, B298, C299, D299, E299, F#299, G299, A299, B299, C300, D300, E300, F#300, G300, A300, B300, C301, D301, E301, F#301, G301, A301, B301, C302, D302, E302, F#302, G302, A302, B302, C303, D303, E303, F#303, G303, A303, B303, C304, D304, E304, F#304, G304, A304, B304, C305, D305, E305, F#305, G305, A305, B305, C306, D306, E306, F#306, G306, A306, B306, C307, D307, E307, F#307, G307, A307, B307, C308, D308, E308, F#308, G308, A308, B308, C309, D309, E309, F#309, G309, A309, B309, C310, D310, E310, F#310, G310, A310, B310, C311, D311, E311, F#311, G311, A311, B311, C312, D312, E312, F#312, G312, A312, B312, C313, D313, E313, F#313, G313, A313, B313, C314, D314, E314, F#314, G314, A314, B314, C315, D315, E315, F#315, G315, A315, B315, C316, D316, E316, F#316, G316, A316, B316, C317, D317, E317, F#317, G317, A317, B317, C318, D318, E318, F#318, G318, A318, B318, C319, D319, E319, F#319, G319, A319, B319, C320, D320, E320, F#320, G320, A320, B320, C321, D321, E321, F#321, G321, A321, B321, C322, D322, E322, F#322, G322, A322, B322, C323, D323, E323, F#323, G323, A323, B323, C324, D324, E324, F#324, G324, A324, B324, C325, D325, E325, F#325, G325, A325, B325, C326, D326, E326, F#326, G326, A326, B326, C327, D327, E327, F#327, G327, A327, B327, C328, D328, E328, F#328, G328, A328, B328, C329, D329, E329, F#329, G329, A329, B329, C330, D330, E330, F#330, G330, A330, B330, C331, D331, E331, F#331, G331, A331, B331, C332, D332, E332, F#332, G332, A332, B332, C333, D333, E333, F#333, G333, A333, B333, C334, D334, E334, F#334, G334, A334, B334, C335, D335, E335, F#335, G335, A335, B335, C336, D336, E336, F#336, G336, A336, B336, C337, D337, E337, F#337, G337, A337, B337, C338, D338, E338, F#338, G338, A338, B338, C339, D339, E339, F#339, G339, A339, B339, C340, D340, E340, F#340, G340, A340, B340, C341, D341, E341, F#341, G341, A341, B341, C342, D342, E342, F#342, G342, A342, B342, C343, D343, E343, F#343, G343, A343, B343, C344, D344, E344, F#344, G344, A344, B344, C345, D345, E345, F#345, G345, A345, B345, C346, D346, E346, F#346, G346, A346, B346, C347, D347, E347, F#347, G347, A347, B347, C348, D348, E348, F#348, G348, A348, B348, C349, D349, E349, F#349, G349, A349, B349, C350, D350, E350, F#350, G350, A350, B350, C351, D351, E351, F#351, G351, A351, B351, C352, D352, E352, F#352, G352, A352, B352, C353, D353, E353, F#353, G353, A353, B353, C354, D354, E354, F#354, G354, A354, B354, C355, D355, E355, F#355, G355, A355, B355, C356, D356, E356, F#356, G356, A356, B356, C357, D357, E357, F#357, G357, A357, B357, C358, D358, E358, F#358, G358, A358, B358, C359, D359, E359, F#359, G359, A359, B359, C360, D360, E360, F#360, G360, A360, B360, C361, D361, E361, F#361, G361, A361, B361, C362, D362, E362, F#362, G362, A362, B

(F)

note concept - concept

Handwritten musical notation for the first system. The treble clef staff contains a series of notes, starting with a sharp sign (#) and a dynamic marking *fff*. Above the staff, the word "concept" is written. The bass clef staff is mostly empty, with a few notes and a sharp sign (#) visible below the staff line.

Handwritten musical notation for the second system. The treble clef staff shows a series of notes with a sharp sign (#) and some notes with accents (^). The bass clef staff contains several notes, some with accents (^), and a sharp sign (#) is visible below the staff line.

Handwritten musical notation for the third system. The treble clef staff contains a series of notes with a sharp sign (#) and some notes with accents (^). The bass clef staff contains several notes, some with accents (^), and a sharp sign (#) is visible below the staff line.

Handwritten musical score for the first system. The top staff is a treble clef with a melodic line. The bottom two staves are a grand staff with piano accompaniment. The piano part includes a section labeled "Pedal" and dynamic markings such as "pp".

Handwritten musical score for the second system. The notation continues with a treble clef and grand staff. A circled "ff" marking is present in the piano part. The piano part includes dynamic markings like "ff" and "pp".

Handwritten musical score for the third system. The notation continues with a treble clef and grand staff. The piano part includes dynamic markings like "pp" and "ped".

hant -

pp

fpp

Pedal

(Pia...)

pp

fpp

leuto (d) solo lampiran

pp

fpp

Pedal blit



☒ (frei)

Handwritten musical score for the first system. The top staff is in treble clef with a key signature of one sharp (F#) and a common time signature. It contains several measures of sixteenth-note runs. Below it is a grand staff with bass and tenor clefs, showing pedal markings and a 'ohne Pedal' instruction. A circled 'X' is in the top left corner.

Handwritten musical score for the second system. It features a grand staff with bass and tenor clefs. The music consists of several measures of chords and single notes, with dynamic markings like 'dim', 'p', and 'pp'. A large oval is drawn around the entire system.

füßliche  
verklängen

Handwritten musical score for the third system. It features a grand staff with bass and tenor clefs. The music consists of several measures of chords and single notes, with dynamic markings like 'ppp'. A large oval is drawn around the entire system.