

L.v. BEETHOVEN



W.A. MOZART



NOTENHEFT

F. SCHUBERT



J. HAYDN



J. STRAUSS



WOLFGANG AMADEUS MOZART (1756-1791) LUDWIG VAN BEETHOVEN (1770-1827)
FRANZ SCHUBERT (1797-1828) JOSEPH HAYDN (1732-1809) JOHANN STRAUSS (1825-1899)

MADE IN AUSTRIA

Sonate 1980 3 Sätze
für Orgel Solo No. 1.

Adolf Scherbaum

F 153 Scherbaum 1280



N.B.

(Wiederholungszeichen
bitte genau
beachten.)

Registrierung dem Solisten
zur freien Auswahl überlassen. / 1980
Adolf Scherbaum

①

Allegro (Solo zart + legato - geheimnisvoll)
legato

pp 4/4

mf

Handwritten musical notation for the first system. The treble clef staff contains notes: $\#g$, $\#g$, g , g in the first measure; g , b^b , g , g in the second measure; b^b , g , g in the third measure. The bass clef staff contains notes: $\#g$, $\#g$, g , g in the first measure; g , b^b , g , g in the second measure. The third measure has rests in both staves. A dynamic marking mf is present in the third measure. A circled ff is written above the treble staff in the third measure.

Handwritten musical notation for the second system. The treble clef staff contains notes: g , $\#g$, b^b , g in the first measure; g , $\#g$, b^b , g in the second measure; b^b , $\#g$, g in the third measure. The bass clef staff contains notes: b^b , g in the first measure; b^b , g in the second measure; b^b , g in the third measure.

Handwritten musical notation for the third system. The treble clef staff contains notes: b^b , g , $\#g$, g in the first measure; $\#g$, g , $\#g$, g in the second measure; $\#g$, g , $\#g$, g in the third measure. The bass clef staff contains notes: b^b , g in the first measure; $\#g$, g in the second measure; b^b , g in the third measure.

Handwritten musical notation for the fourth system. The treble clef staff contains notes: b^b , b^b , b^b , b^b in the first measure; rests in the second and third measures. The bass clef staff contains notes: b^b , b^b , b^b , b^b in the first measure; rests in the second and third measures.

Handwritten musical notation for the first system. The treble clef part contains three measures: the first has notes i' , $\sharp b_1$, and 2 ; the second has notes $\#_1$, $\#_2$, 1 , and b_2 ; the third has a b_2 note with a fermata. The bass clef part has rests in the first two measures and a triplet of notes in the third measure.

Handwritten musical notation for the second system. A bracket above the first two measures is labeled "etwas ruhiger". The first measure has notes b_1 and 1 with dynamic marking ff . The second measure has notes 1 and 2 with dynamic marking pp . A double bar line follows. The third measure has notes i and $\#_1$ with the instruction "zuerst". The bass clef part has notes $\#_1$, $\#_2$, 1 , and 2 in the third measure.

Handwritten musical notation for the third system, consisting of three measures. The treble clef part has notes $\#_1$, $\#_2$, 1 , and 2 in the first measure; b_1 , b_2 , 1 , and 2 in the second; and $\#_1$, $\#_2$, 1 , and 2 in the third. The bass clef part has notes $\#_1$, $\#_2$, 1 , and 2 in the first measure; b_1 , b_2 , 1 , and 2 in the second; and $\#_1$, $\#_2$, 1 , and 2 in the third.

Handwritten musical notation for the fourth system, consisting of three measures. The treble clef part has notes b_1 , b_2 , 1 , and 2 in the first measure; b_1 , b_2 , 1 , and 2 in the second; and notes 1 , 2 , and 3 in the third. The bass clef part has notes b_1 , b_2 , 1 , and 2 in the first measure; b_1 , b_2 , 1 , and 2 in the second; and notes 1 , 2 , and 3 in the third. A circled "c" is written at the end of the system.

Leichte
Version

Handwritten musical notation for the first system, measures 1 and 2. The notation is in treble and bass clefs. Measure 1 features a circled 'ff' dynamic marking and a key signature of one sharp (F#). Measure 2 features a key signature of two sharps (F# and C#). Both measures show a piano part with a slur and a forte part with a slur.

Handwritten musical notation for the second system, measures 3 and 4. Measure 3 features a key signature of two flats (Bb and Eb). Measure 4 features a key signature of one flat (Bb). Both measures show a piano part with a slur and a forte part with a slur.

Handwritten musical notation for the third system, measures 5 and 6. Measure 5 features a key signature of one flat (Bb) and a circled 'ff' dynamic marking. Measure 6 features a key signature of two sharps (F# and C#). Both measures show a piano part with a slur and a forte part with a slur.

Handwritten musical notation for the fourth system, measures 7 and 8. Measure 7 features a piano part with a slur and a forte part with a slur. Measure 8 features a piano part with a slur and a forte part with a slur. The notation includes various accidentals and slurs.

Andante (♩) sehr langsam

(1)

(1)

Cresc.

(1) $\frac{4}{4}$ breit

rubato (frei - bewegt)

ff $\frac{4}{4}$

ff $\frac{4}{4}$

erweicht - bewegt

Tempo

Handwritten musical notation for the first system. The treble staff contains notes with accidentals (sharps and flats) and a dynamic marking of *ff*. The bass staff contains notes with accidentals and a dynamic marking of *33*. A large brace spans across both staves.

Handwritten musical notation for the second system. The treble staff contains notes with accidentals. The bass staff contains notes with accidentals and a dynamic marking of *ff*. A large brace spans across both staves.

Handwritten musical notation for the third system. The treble staff contains notes with accidentals and a circled dynamic marking of *ff*. The bass staff contains notes with accidentals. A large brace spans across both staves.

Handwritten musical notation for the fourth system. The treble staff contains notes with accidentals and a circled dynamic marking of *ff*. The bass staff contains notes with accidentals and a dynamic marking of *ff*. A large brace spans across both staves.

Handwritten musical notation for the first system, featuring a treble clef and a bass clef. The treble staff contains a melodic line with notes and accidentals, and the bass staff contains a bass line with notes and accidentals. Brackets are used to group notes across measures.

Handwritten musical notation for the second system, featuring a treble clef and a bass clef. The treble staff contains a melodic line with notes and accidentals, and the bass staff contains a bass line with notes and accidentals. Brackets are used to group notes across measures.

Crit...

Handwritten musical notation for the third system, featuring a treble clef and a bass clef. The treble staff contains a melodic line with notes and accidentals, and the bass staff contains a bass line with notes and accidentals. Brackets are used to group notes across measures.

ruhig $\frac{4}{4}$

Handwritten musical notation for the fourth system, featuring a treble clef and a bass clef. The treble staff contains a melodic line with notes and accidentals, and the bass staff contains a bass line with notes and accidentals. Brackets are used to group notes across measures.

Handwritten musical notation for the first system, consisting of two staves. The upper staff contains notes with various accidentals (sharps and flats) and a slur. The lower staff contains notes with accidentals and a slur.

Handwritten musical notation for the second system, consisting of two staves. The upper staff contains notes with accidentals and a slur. The lower staff contains notes with accidentals and a slur. A circled 'p' marking is present in the lower staff.

(rit.) →

Handwritten musical notation for the third system, consisting of two staves. The upper staff contains notes with accidentals and a slur. The lower staff contains notes with accidentals and a slur. A circled 'p' marking is present in the lower staff.

Adagio

for rit

Handwritten musical notation for the fourth system, consisting of two staves. The upper staff contains notes with accidentals and a slur. The lower staff contains notes with accidentals and a slur.

Lunga

C. o. p. o

C. o. p. o

Fine

2

Adagio (1) distor

pesante (jede Note)

Handwritten musical notation for the first system, consisting of two staves. The top staff is in treble clef with a 7/8 time signature and contains two measures of sixteenth-note chords. The bottom staff is in bass clef and contains two measures of eighth-note chords with accents (^) over the notes. The first measure of the bottom staff has a flat (b) before the first note.

Handwritten musical notation for the second system, consisting of two staves. The top staff is in treble clef with a 7/8 time signature and contains two measures of sixteenth-note chords. The bottom staff is in bass clef and contains two measures of eighth-note chords with accents (^) over the notes. The first measure of the bottom staff has a sharp (#) before the first note.

Handwritten musical notation for the third system, consisting of two staves. The top staff is in treble clef with a 7/8 time signature and contains two measures of sixteenth-note chords. The bottom staff is in bass clef and contains two measures of eighth-note chords with accents (^) over the notes. The first measure of the bottom staff has a sharp (#) before the first note.

Handwritten musical notation for the fourth system, consisting of two staves. The top staff is in treble clef with a 7/8 time signature and contains two measures of sixteenth-note chords. The bottom staff is in bass clef and contains two measures of eighth-note chords with accents (^) over the notes. The first measure of the bottom staff has a sharp (#) before the first note. To the right of the staves, there is a circled treble clef, a measure of sixteenth-note chords with the word "(rit)" written above it, and a drawing of a pen nib.

(1)

bret (passionato)

ff

b d

rit

3. part)

p

Handwritten musical notation for the first system. The treble clef part begins with a half note G4 (marked with a flat) and a quarter note A4. The bass clef part begins with a half note B3 (marked with a flat) and a quarter note C4. The system concludes with a double bar line.

Handwritten musical notation for the second system. The treble clef part features a half note G4 (marked with a sharp) and a quarter note A4. The bass clef part features a half note B3 (marked with a sharp) and a quarter note C4. The system concludes with a double bar line.

Handwritten musical notation for the third system. The treble clef part contains a melodic line with a slur over it, starting with a half note G4 (marked with a flat) and a quarter note A4. The bass clef part contains a half note B3 (marked with a flat) and a quarter note C4. A marking "legg." is written above the treble staff, and "pp" is written in the bass staff. The system concludes with a double bar line.

Handwritten musical notation for the fourth system. The treble clef part contains a melodic line with a slur over it, starting with a half note G4 (marked with a flat) and a quarter note A4. The bass clef part contains a half note B3 (marked with a sharp) and a quarter note C4. The system concludes with a double bar line.

Handwritten musical notation for the first system. The upper staff contains a melodic line with a slur over two measures. The lower staff contains a bass line with a bracketed chord structure.

Handwritten musical notation for the second system. The upper staff contains a melodic line with a slur over two measures. The lower staff contains a bass line with a bracketed chord structure.

Handwritten musical notation for the third system. The upper staff contains a melodic line with a slur over two measures. The lower staff contains a bass line with a bracketed chord structure.

Handwritten musical notation for the fourth system. The upper staff contains a melodic line with a slur over two measures. The lower staff contains a bass line with a bracketed chord structure. The word "poco rit" is written above the staff.

(♩) breit -

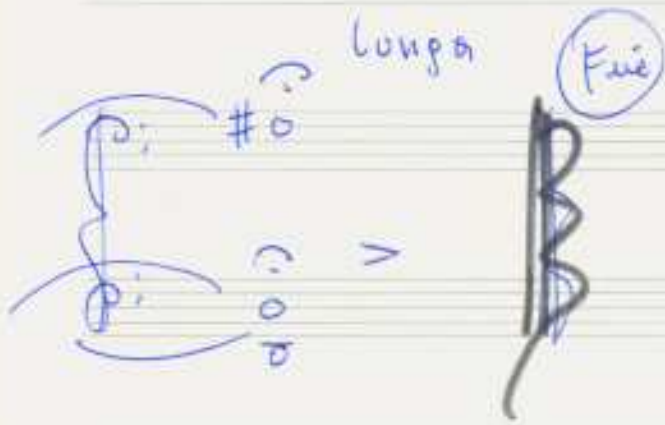
Handwritten musical notation for two staves. The top staff has a treble clef and a circled sharp sign. The bottom staff has a bass clef. Both staves show notes with accidentals and a circled sharp sign.

Handwritten musical notation for two staves. The top staff has a treble clef and the bottom staff has a bass clef. There are notes with accidentals and a circled sharp sign. A box labeled "D. c. al" is present on the right.



su.rit

Handwritten musical notation for two staves. The top staff has a treble clef and the bottom staff has a bass clef. There are notes with accidentals and a circled sharp sign. The word "pp" is written on the left.



Finale

3

Allegro con brio (energetic - energisch)

Handwritten musical notation for the first system, measures 1-4. The music is in 4/4 time, marked with a forte dynamic (ff). The key signature has two sharps (F# and C#). The notation includes a treble clef, a bass clef, and a double bar line. The notes are: G4 (with accent), A4, B4, C5 (with accent), D5, E5, F5, G5, A5, B5, C6, D6, E6, F6, G6, A6, B6, C7, D7, E7, F7, G7, A7, B7, C8, D8, E8, F8, G8, A8, B8, C9, D9, E9, F9, G9, A9, B9, C10, D10, E10, F10, G10, A10, B10, C11, D11, E11, F11, G11, A11, B11, C12, D12, E12, F12, G12, A12, B12, C13, D13, E13, F13, G13, A13, B13, C14, D14, E14, F14, G14, A14, B14, C15, D15, E15, F15, G15, A15, B15, C16, D16, E16, F16, G16, A16, B16, C17, D17, E17, F17, G17, A17, B17, C18, D18, E18, F18, G18, A18, B18, C19, D19, E19, F19, G19, A19, B19, C20, D20, E20, F20, G20, A20, B20, C21, D21, E21, F21, G21, A21, B21, C22, D22, E22, F22, G22, A22, B22, C23, D23, E23, F23, G23, A23, B23, C24, D24, E24, F24, G24, A24, B24, C25, D25, E25, F25, G25, A25, B25, C26, D26, E26, F26, G26, A26, B26, C27, D27, E27, F27, G27, A27, B27, C28, D28, E28, F28, G28, A28, B28, C29, D29, E29, F29, G29, A29, B29, C30, D30, E30, F30, G30, A30, B30, C31, D31, E31, F31, G31, A31, B31, C32, D32, E32, F32, G32, A32, B32, C33, D33, E33, F33, G33, A33, B33, C34, D34, E34, F34, G34, A34, B34, C35, D35, E35, F35, G35, A35, B35, C36, D36, E36, F36, G36, A36, B36, C37, D37, E37, F37, G37, A37, B37, C38, D38, E38, F38, G38, A38, B38, C39, D39, E39, F39, G39, A39, B39, C40, D40, E40, F40, G40, A40, B40, C41, D41, E41, F41, G41, A41, B41, C42, D42, E42, F42, G42, A42, B42, C43, D43, E43, F43, G43, A43, B43, C44, D44, E44, F44, G44, A44, B44, C45, D45, E45, F45, G45, A45, B45, C46, D46, E46, F46, G46, A46, B46, C47, D47, E47, F47, G47, A47, B47, C48, D48, E48, F48, G48, A48, B48, C49, D49, E49, F49, G49, A49, B49, C50, D50, E50, F50, G50, A50, B50, C51, D51, E51, F51, G51, A51, B51, C52, D52, E52, F52, G52, A52, B52, C53, D53, E53, F53, G53, A53, B53, C54, D54, E54, F54, G54, A54, B54, C55, D55, E55, F55, G55, A55, B55, C56, D56, E56, F56, G56, A56, B56, C57, D57, E57, F57, G57, A57, B57, C58, D58, E58, F58, G58, A58, B58, C59, D59, E59, F59, G59, A59, B59, C60, D60, E60, F60, G60, A60, B60, C61, D61, E61, F61, G61, A61, B61, C62, D62, E62, F62, G62, A62, B62, C63, D63, E63, F63, G63, A63, B63, C64, D64, E64, F64, G64, A64, B64, C65, D65, E65, F65, G65, A65, B65, C66, D66, E66, F66, G66, A66, B66, C67, D67, E67, F67, G67, A67, B67, C68, D68, E68, F68, G68, A68, B68, C69, D69, E69, F69, G69, A69, B69, C70, D70, E70, F70, G70, A70, B70, C71, D71, E71, F71, G71, A71, B71, C72, D72, E72, F72, G72, A72, B72, C73, D73, E73, F73, G73, A73, B73, C74, D74, E74, F74, G74, A74, B74, C75, D75, E75, F75, G75, A75, B75, C76, D76, E76, F76, G76, A76, B76, C77, D77, E77, F77, G77, A77, B77, C78, D78, E78, F78, G78, A78, B78, C79, D79, E79, F79, G79, A79, B79, C80, D80, E80, F80, G80, A80, B80, C81, D81, E81, F81, G81, A81, B81, C82, D82, E82, F82, G82, A82, B82, C83, D83, E83, F83, G83, A83, B83, C84, D84, E84, F84, G84, A84, B84, C85, D85, E85, F85, G85, A85, B85, C86, D86, E86, F86, G86, A86, B86, C87, D87, E87, F87, G87, A87, B87, C88, D88, E88, F88, G88, A88, B88, C89, D89, E89, F89, G89, A89, B89, C90, D90, E90, F90, G90, A90, B90, C91, D91, E91, F91, G91, A91, B91, C92, D92, E92, F92, G92, A92, B92, C93, D93, E93, F93, G93, A93, B93, C94, D94, E94, F94, G94, A94, B94, C95, D95, E95, F95, G95, A95, B95, C96, D96, E96, F96, G96, A96, B96, C97, D97, E97, F97, G97, A97, B97, C98, D98, E98, F98, G98, A98, B98, C99, D99, E99, F99, G99, A99, B99, C100, D100, E100, F100, G100, A100, B100, C101, D101, E101, F101, G101, A101, B101, C102, D102, E102, F102, G102, A102, B102, C103, D103, E103, F103, G103, A103, B103, C104, D104, E104, F104, G104, A104, B104, C105, D105, E105, F105, G105, A105, B105, C106, D106, E106, F106, G106, A106, B106, C107, D107, E107, F107, G107, A107, B107, C108, D108, E108, F108, G108, A108, B108, C109, D109, E109, F109, G109, A109, B109, C110, D110, E110, F110, G110, A110, B110, C111, D111, E111, F111, G111, A111, B111, C112, D112, E112, F112, G112, A112, B112, C113, D113, E113, F113, G113, A113, B113, C114, D114, E114, F114, G114, A114, B114, C115, D115, E115, F115, G115, A115, B115, C116, D116, E116, F116, G116, A116, B116, C117, D117, E117, F117, G117, A117, B117, C118, D118, E118, F118, G118, A118, B118, C119, D119, E119, F119, G119, A119, B119, C120, D120, E120, F120, G120, A120, B120, C121, D121, E121, F121, G121, A121, B121, C122, D122, E122, F122, G122, A122, B122, C123, D123, E123, F123, G123, A123, B123, C124, D124, E124, F124, G124, A124, B124, C125, D125, E125, F125, G125, A125, B125, C126, D126, E126, F126, G126, A126, B126, C127, D127, E127, F127, G127, A127, B127, C128, D128, E128, F128, G128, A128, B128, C129, D129, E129, F129, G129, A129, B129, C130, D130, E130, F130, G130, A130, B130, C131, D131, E131, F131, G131, A131, B131, C132, D132, E132, F132, G132, A132, B132, C133, D133, E133, F133, G133, A133, B133, C134, D134, E134, F134, G134, A134, B134, C135, D135, E135, F135, G135, A135, B135, C136, D136, E136, F136, G136, A136, B136, C137, D137, E137, F137, G137, A137, B137, C138, D138, E138, F138, G138, A138, B138, C139, D139, E139, F139, G139, A139, B139, C140, D140, E140, F140, G140, A140, B140, C141, D141, E141, F141, G141, A141, B141, C142, D142, E142, F142, G142, A142, B142, C143, D143, E143, F143, G143, A143, B143, C144, D144, E144, F144, G144, A144, B144, C145, D145, E145, F145, G145, A145, B145, C146, D146, E146, F146, G146, A146, B146, C147, D147, E147, F147, G147, A147, B147, C148, D148, E148, F148, G148, A148, B148, C149, D149, E149, F149, G149, A149, B149, C150, D150, E150, F150, G150, A150, B150, C151, D151, E151, F151, G151, A151, B151, C152, D152, E152, F152, G152, A152, B152, C153, D153, E153, F153, G153, A153, B153, C154, D154, E154, F154, G154, A154, B154, C155, D155, E155, F155, G155, A155, B155, C156, D156, E156, F156, G156, A156, B156, C157, D157, E157, F157, G157, A157, B157, C158, D158, E158, F158, G158, A158, B158, C159, D159, E159, F159, G159, A159, B159, C160, D160, E160, F160, G160, A160, B160, C161, D161, E161, F161, G161, A161, B161, C162, D162, E162, F162, G162, A162, B162, C163, D163, E163, F163, G163, A163, B163, C164, D164, E164, F164, G164, A164, B164, C165, D165, E165, F165, G165, A165, B165, C166, D166, E166, F166, G166, A166, B166, C167, D167, E167, F167, G167, A167, B167, C168, D168, E168, F168, G168, A168, B168, C169, D169, E169, F169, G169, A169, B169, C170, D170, E170, F170, G170, A170, B170, C171, D171, E171, F171, G171, A171, B171, C172, D172, E172, F172, G172, A172, B172, C173, D173, E173, F173, G173, A173, B173, C174, D174, E174, F174, G174, A174, B174, C175, D175, E175, F175, G175, A175, B175, C176, D176, E176, F176, G176, A176, B176, C177, D177, E177, F177, G177, A177, B177, C178, D178, E178, F178, G178, A178, B178, C179, D179, E179, F179, G179, A179, B179, C180, D180, E180, F180, G180, A180, B180, C181, D181, E181, F181, G181, A181, B181, C182, D182, E182, F182, G182, A182, B182, C183, D183, E183, F183, G183, A183, B183, C184, D184, E184, F184, G184, A184, B184, C185, D185, E185, F185, G185, A185, B185, C186, D186, E186, F186, G186, A186, B186, C187, D187, E187, F187, G187, A187, B187, C188, D188, E188, F188, G188, A188, B188, C189, D189, E189, F189, G189, A189, B189, C190, D190, E190, F190, G190, A190, B190, C191, D191, E191, F191, G191, A191, B191, C192, D192, E192, F192, G192, A192, B192, C193, D193, E193, F193, G193, A193, B193, C194, D194, E194, F194, G194, A194, B194, C195, D195, E195, F195, G195, A195, B195, C196, D196, E196, F196, G196, A196, B196, C197, D197, E197, F197, G197, A197, B197, C198, D198, E198, F198, G198, A198, B198, C199, D199, E199, F199, G199, A199, B199, C200, D200, E200, F200, G200, A200, B200, C201, D201, E201, F201, G201, A201, B201, C202, D202, E202, F202, G202, A202, B202, C203, D203, E203, F203, G203, A203, B203, C204, D204, E204, F204, G204, A204, B204, C205, D205, E205, F205, G205, A205, B205, C206, D206, E206, F206, G206, A206, B206, C207, D207, E207, F207, G207, A207, B207, C208, D208, E208, F208, G208, A208, B208, C209, D209, E209, F209, G209, A209, B209, C210, D210, E210, F210, G210, A210, B210, C211, D211, E211, F211, G211, A211, B211, C212, D212, E212, F212, G212, A212, B212, C213, D213, E213, F213, G213, A213, B213, C214, D214, E214, F214, G214, A214, B214, C215, D215, E215, F215, G215, A215, B215, C216, D216, E216, F216, G216, A216, B216, C217, D217, E217, F217, G217, A217, B217, C218, D218, E218, F218, G218, A218, B218, C219, D219, E219, F219, G219, A219, B219, C220, D220, E220, F220, G220, A220, B220, C221, D221, E221, F221, G221, A221, B221, C222, D222, E222, F222, G222, A222, B222, C223, D223, E223, F223, G223, A223, B223, C224, D224, E224, F224, G224, A224, B224, C225, D225, E225, F225, G225, A225, B225, C226, D226, E226, F226, G226, A226, B226, C227, D227, E227, F227, G227, A227, B227, C228, D228, E228, F228, G228, A228, B228, C229, D229, E229, F229, G229, A229, B229, C230, D230, E230, F230, G230, A230, B230, C231, D231, E231, F231, G231, A231, B231, C232, D232, E232, F232, G232, A232, B232, C233, D233, E233, F233, G233, A233, B233, C234, D234, E234, F234, G234, A234, B234, C235, D235, E235, F235, G235, A235, B235, C236, D236, E236, F236, G236, A236, B236, C237, D237, E237, F237, G237, A237, B237, C238, D238, E238, F238, G238, A238, B238, C239, D239, E239, F239, G239, A239, B239, C240, D240, E240, F240, G240, A240, B240, C241, D241, E241, F241, G241, A241, B241, C242, D242, E242, F242, G242, A242, B242, C243, D243, E243, F243, G243, A243, B243, C244, D244, E244, F244, G244, A244, B244, C245, D245, E245, F245, G245, A245, B245, C246, D246, E246, F246, G246, A246, B246, C247, D247, E247, F247, G247, A247, B247, C248, D248, E248, F248, G248, A248, B248, C249, D249, E249, F249, G249, A249, B249, C250, D250, E250, F250, G250, A250, B250, C251, D251, E251, F251, G251, A251, B251, C252, D252, E252, F252, G252, A252, B252, C253, D253, E253, F253, G253, A253, B253, C254, D254, E254, F254, G254, A254, B254, C255, D255, E255, F255, G255, A255, B255, C256, D256, E256, F256, G256, A256, B256, C257, D257, E257, F257, G257, A257, B257, C258, D258, E258, F258, G258, A258, B258, C259, D259, E259, F259, G259, A259, B259, C260, D260, E260, F260, G260, A260, B260, C261, D261, E261, F261, G261, A261, B261, C262, D262, E262, F262, G262, A262, B262, C263, D263, E263, F263, G263, A263, B263, C264, D264, E264, F264, G264, A264, B264, C265, D265, E265, F265, G265, A265, B265, C266, D266, E266, F266, G266, A266, B266, C267, D267, E267, F267, G267, A267, B267, C268, D268, E268, F268, G268, A268, B268, C269, D269, E269, F269, G269, A269, B269, C270, D270, E270, F270, G270, A270, B270, C271, D271, E271, F271, G271, A271, B271, C272, D272, E272, F272, G272, A272, B272, C273, D273, E273, F273, G273, A273, B273, C274, D274, E274, F274, G274, A274, B274, C275, D275, E275, F275, G275, A275, B275, C276, D276, E276, F276, G276, A276, B276, C277, D277, E277, F277, G277, A277, B277, C278, D278, E278, F278, G278, A278, B278, C279, D279, E279, F279, G279, A279, B279, C280, D280, E280, F280, G280, A280, B280, C281, D281, E281, F281, G281, A281, B281, C282, D282, E282, F282, G282, A282, B282, C283, D283, E283, F283, G283, A283, B283, C284, D284, E284, F284, G284, A284, B284, C285, D285, E285, F285, G285, A285, B285, C286, D286, E286, F286, G286, A286, B286, C287, D287, E287, F287, G287, A287, B287, C288, D288, E288, F288, G288, A288, B288, C289, D289, E289, F289, G289, A289, B289, C290, D290, E290, F290, G290, A290, B290, C291, D291, E291, F291, G291, A291, B291, C292, D292, E292, F292, G292, A292, B292, C293, D293, E293, F293, G293, A293, B293, C294, D294, E294, F294, G294, A294, B294, C295, D295, E295, F295, G295, A295, B295, C296, D296, E296, F296, G296, A296, B296, C297, D297, E297, F297, G297, A297, B297, C298, D298, E298, F298, G298, A298, B298, C299, D299, E299, F299, G299, A299, B299, C300, D300, E300, F300, G300, A300, B300, C301, D301, E301, F301, G301, A301, B301, C302, D302, E302, F302, G302, A302, B302, C303, D303, E303, F303, G303, A303, B303, C304, D304, E304, F304, G304, A304, B304, C305, D305, E305, F305, G305, A305, B305, C306, D306, E306, F306, G306, A306, B306, C307, D307, E307, F307, G307, A307, B307, C308, D308, E308, F308, G308, A308, B308, C309, D309, E309, F309, G309, A309, B309, C310, D310, E310, F310, G310, A310, B310, C311, D311, E311, F311, G311, A311, B311, C312, D312, E312, F312, G312, A312, B312, C313, D313, E313, F313, G313, A313, B313, C314, D314, E314, F314, G314, A314, B314, C315, D315, E315, F315, G315, A315, B315, C316, D316, E316, F316, G316, A316, B316, C317, D317, E317, F317, G317, A317, B317, C318, D318, E318, F318, G318, A318, B318, C319, D319, E319, F319, G319, A319, B319, C320, D320, E320, F320, G320, A320, B320, C321, D321, E321, F321, G321, A321, B321, C322, D322, E322, F322, G322, A322, B322, C323, D323, E323, F323, G323, A323, B323, C324, D324, E324, F324, G324, A324, B324, C325, D325, E325, F325, G325, A325, B325, C326, D326, E326, F326, G326, A326, B326, C327, D327, E327, F327, G327, A327, B327, C328, D328, E328, F328, G328, A328, B328, C329, D329, E329, F329, G329, A329, B329, C330, D330, E330, F330, G330, A330, B330, C331, D331, E331, F331, G331, A331, B331, C332, D332, E332, F332, G332, A332, B332, C333, D333, E333, F333, G333, A333, B333, C334, D334, E334, F334, G334, A334, B334, C335, D335, E335, F335, G335, A335, B335, C336, D336, E336, F336, G336, A336, B336, C337, D337, E337, F337, G337, A337, B337, C338, D338, E338, F338, G338, A338, B338, C339, D339, E339, F339, G339, A339, B339, C340, D340, E340, F340, G340, A340, B340, C341, D341, E341, F341, G341, A341, B341, C342, D342, E342, F342, G342, A342, B342, C343, D343, E343, F343, G343, A343, B343, C344, D344, E344, F344, G344, A344, B344, C345, D345, E345, F345, G345, A345, B345, C346, D346, E346, F346, G346, A346, B346, C347, D347, E347, F347, G347, A347, B347, C348, D348, E348, F348, G348, A348, B348, C349, D349, E349, F349, G349, A349, B349, C350, D350, E350, F350, G350, A350, B350, C351, D351, E351, F351, G351, A351, B351, C352, D352, E352, F352, G352, A352, B352, C353, D353, E353, F353, G353, A353, B353, C354, D354, E354, F354, G354, A354, B354, C355, D355, E355, F355, G355, A355, B355, C356, D356, E356, F356, G356, A356, B356, C357, D357, E357, F357, G357, A357, B357, C358, D358, E358, F358, G358, A358, B358, C359, D359, E359, F359, G359, A359, B359, C360, D360, E360, F360, G360, A360, B360, C361, D361, E361, F361, G361, A361, B361, C362, D362, E362, F362, G362, A362, B362, C363, D363, E363, F363, G363, A363, B363, C364, D364, E364, F364, G364, A364, B364, C365, D365, E365, F365, G365, A365, B365, C366, D366, E366, F366, G366, A366, B366, C367, D367, E367, F367, G367, A367, B367, C368, D368, E368, F368, G368, A368, B368, C369, D369, E369, F369, G369, A369, B369, C370, D370, E370, F370, G370, A370, B370, C371, D371, E371, F371, G

Handwritten musical notation for the first system. The treble staff contains a melodic line with a slur over the first two measures and a fermata in the second measure. The bass staff contains a bass line with a slur over the first two measures and a fermata in the second measure. The notes in the bass staff are marked with a sharp sign (#).

Handwritten musical notation for the second system. The treble staff contains a melodic line with a slur over the first two measures and a fermata in the second measure. The bass staff contains a bass line with a slur over the first two measures and a fermata in the second measure. The notes in the bass staff are marked with a sharp sign (#).

Handwritten musical notation for the third system. The treble staff contains a melodic line with a slur over the first two measures and a fermata in the second measure. The bass staff contains a bass line with a slur over the first two measures and a fermata in the second measure. The notes in the bass staff are marked with a sharp sign (#). The system concludes with a dynamic marking section: f , mf , and p .

wesentlich

gehöriger

Handwritten musical notation for the fourth system. The treble staff contains a melodic line starting with a dynamic marking p . The bass staff contains a bass line. The notes in the bass staff are marked with a sharp sign (#).

(rit...)

Tempo ①

(rit)

Tempo ① *cresc.*

Handwritten musical notation for the first system, measures 1-4. The notation is in treble clef with a key signature of one sharp (F#). The first measure contains a triplet of eighth notes (F#, G, A) with a '3' below them, followed by a slash. The second measure contains a triplet of eighth notes (G, A, B) with a slash. The third measure contains a triplet of eighth notes (A, B, C#) with a slash. The fourth measure contains a triplet of eighth notes (B, C#, D) with a slash. The bass line consists of quarter notes: F# in the first measure, G in the second, A in the third, and B in the fourth. Each bass note has a '3' below it, indicating a triplet.

Handwritten musical notation for the second system, measures 5-8. The notation is in treble clef with a key signature of one flat (Bb). The first measure contains a triplet of eighth notes (Bb, C, D) with a slash. The second measure contains a triplet of eighth notes (C, D, Eb) with a slash. The third measure contains a triplet of eighth notes (D, Eb, F) with a slash. The fourth measure contains a triplet of eighth notes (Eb, F, G) with a slash. The bass line consists of quarter notes: Bb in the first measure, C in the second, D in the third, and Eb in the fourth. Each bass note has a '3' below it, indicating a triplet.

Handwritten musical notation for the third system, measures 9-12. The notation is in treble clef with a key signature of two sharps (D major). The first measure contains a triplet of eighth notes (D, E, F#) with a slash. The second measure contains a triplet of eighth notes (E, F#, G) with a slash. The third measure contains a triplet of eighth notes (F#, G, A) with a slash. The fourth measure contains a triplet of eighth notes (G, A, B) with a slash. The bass line consists of quarter notes: D in the first measure, E in the second, F# in the third, and G in the fourth. Each bass note has a '3' below it, indicating a triplet.

frei - gestalten

Handwritten musical notation for the fourth system, measures 13-16. The notation is in treble clef. The first measure contains four quarter notes: D, E, F#, G. The second, third, and fourth measures each contain a single slash, indicating rests. The bass line consists of quarter notes: D in the first measure, E in the second, F# in the third, and G in the fourth.

Handwritten musical notation for the first system, featuring a treble and bass clef with notes and rests.

Handwritten musical notation for the second system, featuring a treble and bass clef with notes and rests.

ritempo

Handwritten musical notation for the third system, including a boxed "ritempo" instruction and a large slur over the notes.

Handwritten musical notation for the fourth system, starting with a 4/4 time signature and ending with a double bar line.

Tempo ①

Handwritten musical notation for the first system. It consists of a treble clef staff and a bass clef staff. The treble staff contains a melodic line with a circled 'p' dynamic marking. The bass staff contains a bass line with notes marked with flats and sharps. A large slur covers both staves across two measures.

Handwritten musical notation for the second system, continuing the piece. It features a treble clef staff and a bass clef staff. The treble staff has a melodic line with various accidentals. The bass staff has notes with flats and sharps, including a note marked with a sharp and a 'dis' (dissonance) symbol. A large slur spans across two measures.

immer ruhiger werden. --- →

Handwritten musical notation for the third system. It includes a treble clef staff and a bass clef staff. The treble staff shows a melodic line with a mix of accidentals. The bass staff has notes with sharps and flats. A large slur covers two measures.

Handwritten musical notation for the fourth system. It consists of a treble clef staff and a bass clef staff. The treble staff contains a melodic line with several accidentals. The bass staff has notes with flats and sharps. A large slur spans across three measures.

rit.

Adagio (sehr langsam)

Handwritten musical notation for the first system. The treble clef contains a melodic line starting with a sharp sign (F#) and a series of notes. The bass clef contains a whole note chord.

Handwritten musical notation for the second system, starting with a double bar line and a circled *pp* dynamic marking. The treble clef contains notes with accidentals, and the bass clef contains a whole note chord.

Handwritten musical notation for the third system, featuring a circled *pp* dynamic marking and various accidentals in both staves.

Handwritten musical notation for the fourth system, showing a circled *pp* dynamic marking and a key signature change to one sharp.

Handwritten musical notation for the fifth system, showing a circled *pp* dynamic marking and a key signature change to one sharp.

Handwritten musical notation for the sixth system, ending with a circled *pp* dynamic marking and a double bar line with "D.C." and repeat lines.

Tempo ① Allegro con brio (except) moder. Steigerung

4/4 **ff** 4/4

rit.

Presto legato

(letzten 3 Takte moderats)

Handwritten musical notation, first system. Treble clef, four chords in the first measure, followed by two measures with rests. Bass clef, notes and accidentals: G, B, D, F# in the first measure; G, B, D, F# in the second; G, B, D, F# in the third.

Handwritten musical notation, second system. Treble clef, four chords in the first measure, followed by two measures with rests. Bass clef, notes and accidentals: G, B, D, F# in the first measure; G, B, D, F# in the second; G, B, D, F# in the third.

Handwritten musical notation, third system. Treble clef, eighth notes and chords. Bass clef, whole notes.

Handwritten musical notation, fourth system. Treble clef, eighth notes and chords. Bass clef, whole notes. A circled $\frac{4}{4}$ time signature is present. The word "rit..." is written below the bass line.

breit

Lunga

Handwritten musical notation, fifth system. Treble clef, wavy lines. Bass clef, notes and accidentals: G, B, D, F# in the first measure; G, B, D, F# in the second.

Adolf Schalk

Sonate 1980 3 Sätze

für Orgel Solo No 2.

Adolf Schenker

(Improvisationen über Sonate No. 1)

N.B.

(Wiederholung im
bitte genau
beachten)

①

frei gestalten - rubato - Fantasie

Handwritten musical notation for the first system. It features a treble clef with a 3/8 time signature. The first measure contains a circled 'fff' dynamic marking and a half note. The second measure is a whole rest. The third measure is a 4/8 time signature with a half note. The fourth and fifth measures are whole notes with complex chordal structures. The piece concludes with a fermata over the final note.

Handwritten musical notation for the second system. It features a treble clef with a 3/8 time signature. The first measure contains a circled 'fff' dynamic marking and a half note. The second measure is a whole rest. The third measure is a 4/8 time signature with a half note. The fourth and fifth measures are whole notes with complex chordal structures. The piece concludes with a fermata over the final note.

Handwritten musical notation for the third system. It features a treble clef with a 3/8 time signature. The first measure contains a circled 'fff' dynamic marking and a half note. The second measure is a whole rest. The third measure is a 4/8 time signature with a half note. The fourth and fifth measures are whole notes with complex chordal structures. The piece concludes with a fermata over the final note.

clust Cluster

Handwritten musical notation for the fourth system. It features a treble clef with a 3/8 time signature. The first measure contains a circled 'fff' dynamic marking and a half note. The second measure is a whole rest. The third measure is a 4/8 time signature with a half note. The fourth and fifth measures are whole notes with complex chordal structures. The piece concludes with a fermata over the final note.

Handwritten musical notation for the first system. It features a treble clef and a bass clef. The time signature is 3/8, which changes to 5/8 in the second measure. The first measure contains a complex chordal structure with accidentals (sharps and flats) and a fermata. The second measure continues with similar notation. The final two measures show a simple bass line with notes G and G.

Handwritten musical notation for the second system. It features a treble clef and a bass clef. The time signature is 3/8, which changes to 4/8 in the second measure. The first measure contains a complex chordal structure with accidentals and a fermata. The second measure continues with similar notation. The final two measures show a simple bass line with notes G and G.

Handwritten musical notation for the third system. It features a treble clef and a bass clef. The time signature is 8/8. The word "breit" is written above the first measure. The first measure contains a complex chordal structure with accidentals and a fermata. The second measure continues with similar notation. The final two measures show a simple bass line with notes G and G.

Handwritten musical notation for the fourth system. It features a treble clef and a bass clef. The first measure contains a complex chordal structure with accidentals and a fermata. The second measure continues with similar notation. The final two measures show a simple bass line with notes G and G.

rit



zart

rit

breit (appassionato)

(poco rit)

D.C.

♩ coda (Lento) ♩

rit

Handwritten musical notation for a piano piece. It features a grand staff with treble and bass clefs. The treble clef part has a series of notes with stems and flags, including some with accidentals (sharps and flats). The bass clef part has a few notes, including a double bar line. There are dynamic markings like 'pp' and 'p' and a 'rit' marking in a circle. The piece is marked 'coda' and 'Lento'.

Handwritten musical notation showing a treble clef with a sharp sign and a bass clef with a 'lunga' marking. A wavy line is drawn across the staves, and a large circle is drawn below it.

2

lento (♩)

ruhige (♩)

rit-----



Handwritten musical notation for a section marked 'rit'. It consists of two staves. The upper staff has a treble clef and contains a melodic line with notes G4, A4, B4, C5, D5, E5, F5, G5, A5, B5, C6, D6, E6, F6, G6, A6, B6, C7. The lower staff has a bass clef and contains a bass line with notes G2, A2, B2, C3, D3, E3, F3, G3, A3, B3, C4, D4, E4, F4, G4, A4, B4, C5. There are various accidentals and dynamics markings throughout.

erregte Adagio (sehr rubato)

Handwritten musical notation for a section marked 'erregte Adagio (sehr rubato)'. It consists of two staves. The upper staff has a treble clef and contains a melodic line with notes G4, A4, B4, C5, D5, E5, F5, G5, A5, B5, C6, D6, E6, F6, G6, A6, B6, C7. The lower staff has a bass clef and contains a bass line with notes G2, A2, B2, C3, D3, E3, F3, G3, A3, B3, C4, D4, E4, F4, G4, A4, B4, C5. There are various accidentals and dynamics markings throughout.

Handwritten musical notation for a section. It consists of two staves. The upper staff has a treble clef and contains a melodic line with notes G4, A4, B4, C5, D5, E5, F5, G5, A5, B5, C6, D6, E6, F6, G6, A6, B6, C7. The lower staff has a bass clef and contains a bass line with notes G2, A2, B2, C3, D3, E3, F3, G3, A3, B3, C4, D4, E4, F4, G4, A4, B4, C5. There are various accidentals and dynamics markings throughout.

accel.

Handwritten musical notation for a section marked 'accel.'. It consists of two staves. The upper staff has a treble clef and contains a melodic line with notes G4, A4, B4, C5, D5, E5, F5, G5, A5, B5, C6, D6, E6, F6, G6, A6, B6, C7. The lower staff has a bass clef and contains a bass line with notes G2, A2, B2, C3, D3, E3, F3, G3, A3, B3, C4, D4, E4, F4, G4, A4, B4, C5. There are various accidentals and dynamics markings throughout.

(1) except

(rit...)

sehr breit (aber nicht stollend)

en (reit.)

COPH

Lunga

Satz **3**

DHGIO

mit

Allegro con Brio (d)

Handwritten musical notation for the first system, featuring a treble clef, a key signature of one sharp (F#), and a 4/4 time signature. The music consists of two staves with various notes and rests, including a triplet of eighth notes in the first measure of the second staff.

Handwritten musical notation for the second system, continuing the two-staff format. It includes a treble clef, a key signature of one sharp, and a 4/4 time signature. The notation shows a continuation of the melodic and harmonic material from the first system.

Handwritten musical notation for the third system, featuring a grand staff (treble and bass clefs). The music includes a treble clef, a key signature of one sharp, and a 4/4 time signature. It shows a continuation of the piece with various notes and rests.

Handwritten musical notation for the fourth system, featuring a treble clef, a key signature of one sharp, and a 4/4 time signature. The music includes a treble clef, a key signature of one sharp, and a 4/4 time signature. It shows a continuation of the piece with various notes and rests.

Handwritten musical notation for the fifth system, featuring a treble clef, a key signature of one sharp, and a 4/4 time signature. The music includes a treble clef, a key signature of one sharp, and a 4/4 time signature. It shows a continuation of the piece with various notes and rests.

ritiro (sehr bewegt) -

Handwritten musical notation for the first system. The treble clef has a circled **ff**. The first measure contains a triplet of eighth notes with a flat, followed by a slur over a series of eighth notes. The bass clef has a 4/8 time signature. The second measure has a slur over eighth notes with a flat, and the bass clef has a 4/8 time signature. The third measure has a slur over eighth notes with a flat, and the bass clef has a 4/8 time signature.

Handwritten musical notation for the second system. The treble clef has a slur over eighth notes with a flat. The bass clef has a 4/8 time signature. The second measure has a slur over eighth notes with a sharp, and the bass clef has a 4/8 time signature. The third measure has a slur over eighth notes with a flat, and the bass clef has a 4/8 time signature.

Handwritten musical notation for the third system. The treble clef has a slur over eighth notes with a flat. The bass clef has a 4/8 time signature. The second measure has a slur over eighth notes with a flat, and the bass clef has a 4/8 time signature. The third measure has a slur over eighth notes with a flat, and the bass clef has a 4/8 time signature.

Handwritten musical notation for the fourth system. The treble clef has a slur over eighth notes with a sharp. The bass clef has a 4/8 time signature. The second measure has a slur over eighth notes with a sharp, and the bass clef has a 4/8 time signature. The third measure has a slur over eighth notes with a flat, and the bass clef has a 4/8 time signature.

Handwritten musical notation for the fifth system. The treble clef has a slur over eighth notes with a flat. The bass clef has a 4/8 time signature. The second measure has a slur over eighth notes with a sharp, and the bass clef has a 4/8 time signature. The third measure has a slur over eighth notes with a flat, and the bass clef has a 4/8 time signature. The fourth measure has a slur over eighth notes with a flat, and the bass clef has a 4/8 time signature. A circled **p** is written at the end of the system. Above the system, there is a circled **cod** and the word **poco rit** written above a horizontal line.

Sulig

Handwritten musical notation for the first system. The treble clef staff contains a melodic line with notes and accidentals (sharps and flats) and a circled 'p' dynamic marking. The bass clef staff contains a bass line with notes and accidentals.

Handwritten musical notation for the second system, continuing the melodic and bass lines from the first system.

(mit...)

Handwritten musical notation for the third system, including a fermata over a note in the treble staff and a 'rit.' marking in the bass staff.

ins Tempo ① übergehen

Handwritten musical notation for the fourth system, ending with a double bar line and a 'D.C.' marking. The bass staff has a circled '1' and the word 'auel.' written above it.

Handwritten musical notation for the fifth system, starting with a 'Tempo ①' marking and a 6/4 time signature. The treble staff has a circled '2' and the bass staff has a circled '3'.

Handwritten musical notation for the sixth system, continuing the piece.

Handwritten musical score for Oboe Solo, consisting of 12 staves. The notation includes various musical symbols such as notes, rests, dynamics (p, pp, ff), and articulation marks. The score is written in a key signature of one sharp (F#) and a time signature of 3/4. The notation is dense and includes many slurs and ties. There are some handwritten annotations and corrections throughout the piece.

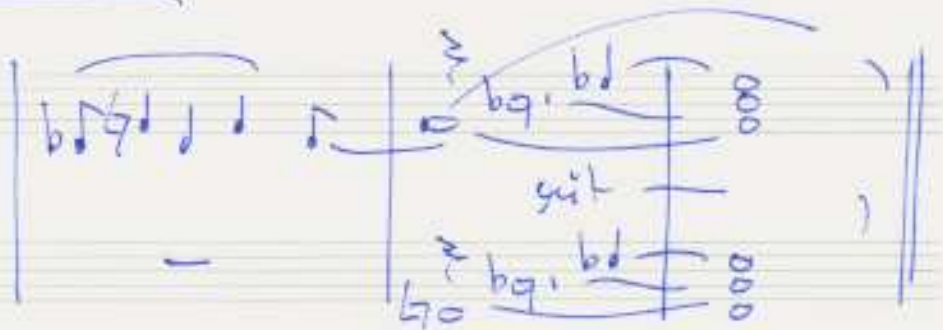
Handwritten signature and name: *Inge Adamkew-Schäfer*

Coda (suit)

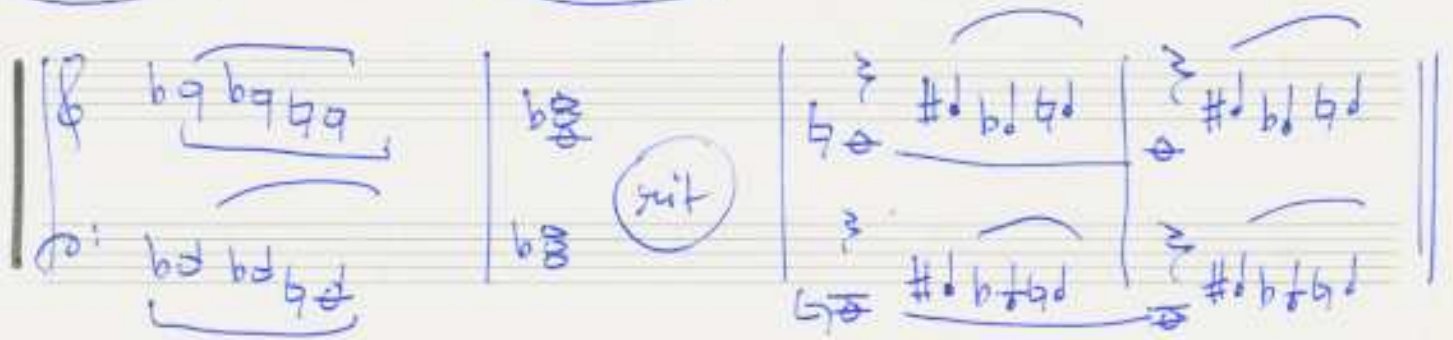
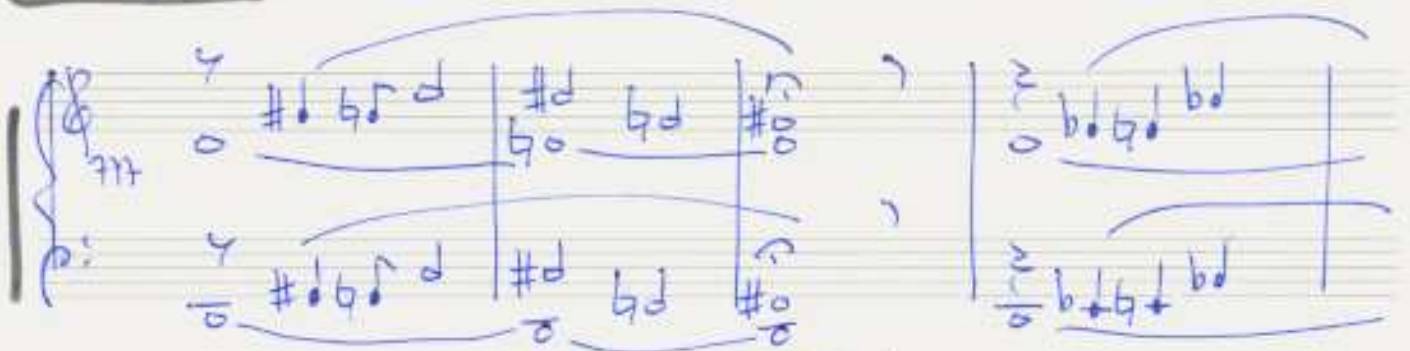
breit



#5 5 0 0 0
#5 5 0 0 0



Maestoso



Free Solo