

L.v. BEETHOVEN



W.A. MOZART



NOTENHEFT

F. SCHUBERT



J. HAYDN



J. STRAUSS



Somate 1980

3 Sätze

für Opel foto

Not.

Adolf Scherbaum

F 153 Scherbaum 1280



N.B.

(Wiederholungsarbeiten
bitte genau
beachten.)

Registrierung dem Soldaten
zur freien Auswahl überlassen

1980

Adolf Scherbaum

1

Allegro (Solo scand. + legato - felsenmassig)
legato

pp 4/4

Handwritten musical notation for the first system, measures 1-3. Treble and bass staves with notes and accidentals.

Handwritten musical notation for the second system, measures 4-6. Treble and bass staves with notes and accidentals.

Handwritten musical notation for the third system, measures 7-9. Treble and bass staves with notes and accidentals.

Handwritten musical notation for the fourth system, measures 10-12. Treble and bass staves with notes and accidentals.

Handwritten musical notation for the first system. The treble clef staff contains a melodic line with notes including sharps and naturals, ending with a fermata and a circled **ff** dynamic marking. The bass clef staff contains a bass line with notes and rests. A **mf** dynamic marking is present in the second measure.

Handwritten musical notation for the second system. The treble clef staff features a melodic line with notes and rests, including a fermata. The bass clef staff contains a bass line with notes and rests.

Handwritten musical notation for the third system. The treble clef staff features a melodic line with notes and rests, including a fermata. The bass clef staff contains a bass line with notes and rests.

Handwritten musical notation for the fourth system. The treble clef staff features a melodic line with notes and rests, including a fermata. The bass clef staff contains a bass line with notes and rests.

Handwritten musical notation for the first system. It features a treble and bass clef, a key signature of one flat, and a 4/4 time signature. The melody consists of three measures with notes and accidentals, and a final measure with a fermata and a circled '2'.

Handwritten musical notation for the second system. It includes a box labeled "etwas ruhiger" above the staff. The notation shows dynamics like "ff" and "pp", and a "Zusatz" section with a key signature change to two sharps.

Handwritten musical notation for the third system, showing three measures of music with various notes and accidentals.

Handwritten musical notation for the fourth system, showing three measures of music, ending with a circled "2".

Lambert

Example

Handwritten musical notation for the first system. The treble clef staff contains a circled **ff** dynamic marking and a chord with a sharp sign. The bass clef staff contains a series of notes with stems pointing up, including a sharp sign. The system is divided into two measures by a vertical bar line.

Handwritten musical notation for the second system. The treble clef staff contains a chord with a flat sign. The bass clef staff contains notes with stems pointing up, including a flat sign. The system is divided into two measures by a vertical bar line.

Handwritten musical notation for the third system. The treble clef staff contains a chord with a sharp sign. The bass clef staff contains notes with stems pointing up, including a sharp sign. The system is divided into two measures by a vertical bar line.

Handwritten musical notation for the fourth system. The treble clef staff contains notes with stems pointing up, including a sharp sign. The bass clef staff contains notes with stems pointing up, including a sharp sign. The system is divided into two measures by a vertical bar line.

Handwritten musical notation, first system. Treble clef, key signature of one sharp (F#). The first measure contains a melodic line with a slur and a fermata, and a bass line with notes G, A, B, C, D, E, F, G. The second measure contains a melodic line with a slur and a fermata, and a bass line with notes G, A, B, C, D, E, F, G. There are some handwritten annotations above the staff, possibly indicating fingerings or dynamics.

Handwritten musical notation, second system. Treble clef, key signature of one sharp (F#). The first measure contains a melodic line with a slur and a fermata, and a bass line with notes G, A, B, C, D, E, F, G. The second measure contains a melodic line with a slur and a fermata, and a bass line with notes G, A, B, C, D, E, F, G. There are some handwritten annotations above the staff, possibly indicating fingerings or dynamics.

Handwritten musical notation, third system. Treble clef, key signature of one sharp (F#). The first measure contains a melodic line with a slur and a fermata, and a bass line with notes G, A, B, C, D, E, F, G. The second measure contains a melodic line with a slur and a fermata, and a bass line with notes G, A, B, C, D, E, F, G. There are some handwritten annotations above the staff, possibly indicating fingerings or dynamics.

Handwritten musical notation, fourth system. Treble clef, key signature of one sharp (F#). The first measure contains a melodic line with a slur and a fermata, and a bass line with notes G, A, B, C, D, E, F, G. The second measure contains a melodic line with a slur and a fermata, and a bass line with notes G, A, B, C, D, E, F, G. The third measure contains a melodic line with a slur and a fermata, and a bass line with notes G, A, B, C, D, E, F, G. The fourth measure contains a melodic line with a slur and a fermata, and a bass line with notes G, A, B, C, D, E, F, G. There are some handwritten annotations above the staff, possibly indicating fingerings or dynamics. A circled 'P' is visible in the fourth measure.

Andante (♩) *sehr langsam*

Handwritten musical notation for the first system. It consists of a treble clef staff and a bass clef staff. The treble staff begins with a treble clef, a key signature of one sharp (F#), and a 4/4 time signature. The first measure contains a whole note G4, followed by a whole rest. The second measure contains a whole note A4. The third measure contains a whole note B4. The fourth measure contains a whole note C5. The bass staff contains whole notes: G3 in the first measure, F3 in the second, E3 in the third, and D3 in the fourth. A dynamic marking 'pp' is written above the first measure. A circled '1' is written above the first measure of the treble staff.

Handwritten musical notation for the second system. It continues with treble and bass staves. The treble staff has a circled '2' above the first measure. The notes in the treble staff are: G4 (circled), A4, B4, and C5. The bass staff has whole notes: G3, F3, E3, and D3. There are various annotations, including a circled '3' above the first measure, a circled '4' above the second measure, and a circled '5' above the third measure. A dynamic marking 'pp' is present.

Handwritten musical notation for the third system. The treble staff contains notes: G4, A4, B4, and C5. The bass staff contains whole notes: G3, F3, E3, and D3. The system concludes with a double bar line.

Handwritten musical notation for the fourth system. The treble staff contains notes: G4, A4, B4, and C5. The bass staff contains whole notes: G3, F3, E3, and D3. The system concludes with a double bar line.

(1)

Handwritten musical score for system 1. It features a grand staff with treble and bass clefs. The key signature has one sharp (F#). The time signature is 4/8. The music includes a piano (pp) dynamic marking, a 4-measure rest, and melodic lines in both hands. A circled '1' is written below the bass staff.

Handwritten musical score for system 2. It features a grand staff with treble and bass clefs. The key signature has two flats (Bb, Eb). The music includes melodic lines in both hands.

Handwritten musical score for system 3. It features a grand staff with treble and bass clefs. The key signature has one sharp (F#). The music includes melodic lines in both hands.

Crit

Handwritten musical score for system 4. It features a grand staff with treble and bass clefs. The key signature has two flats (Bb, Eb). The music includes melodic lines in both hands, ending with a double bar line.

6/4

(1)

Quart

Handwritten musical notation for the first system. It consists of two staves. The top staff has a treble clef and a circled '32' next to it. The bottom staff has a bass clef and a circled '32' next to it. Both staves contain notes with stems and beams, and some notes have accidentals (flats and naturals). There are also some rests and dynamic markings.

Handwritten musical notation for the second system. It consists of two staves. The top staff has a treble clef and the bottom staff has a bass clef. Both staves contain notes with stems and beams, and some notes have accidentals (sharps and naturals). There are also some rests and dynamic markings.

rubato (frei - erregt)

frei steigern →

Handwritten musical notation for the third system. It consists of two staves. The top staff has a treble clef and the bottom staff has a bass clef. Both staves contain notes with stems and beams, and some notes have accidentals (sharps and naturals). There are also some rests and dynamic markings.

Handwritten musical notation for the fourth system. It consists of two staves. The top staff has a treble clef and the bottom staff has a bass clef. Both staves contain notes with stems and beams, and some notes have accidentals (sharps and naturals). There are also some rests and dynamic markings.

Concept - concept

Handwritten musical notation for the first system. It consists of two staves. The top staff has a circled 'ff' dynamic marking. The notes are: G4 (quarter), A4 (quarter), B4 (quarter), C5 (quarter), D5 (quarter), E5 (quarter), F5 (quarter), G5 (quarter). The bottom staff has notes: G4 (quarter), A4 (quarter), B4 (quarter), C5 (quarter), D5 (quarter), E5 (quarter), F5 (quarter), G5 (quarter). There are various accidentals (sharps and naturals) throughout. A slur is present over the first four notes of both staves. The word 'rit.' is written below the second measure of the bottom staff.

Handwritten musical notation for the second system. It consists of two staves. The top staff has notes: G4 (quarter), A4 (quarter), B4 (quarter), C5 (quarter), D5 (quarter), E5 (quarter), F5 (quarter), G5 (quarter). The bottom staff has notes: G4 (quarter), A4 (quarter), B4 (quarter), C5 (quarter), D5 (quarter), E5 (quarter), F5 (quarter), G5 (quarter). There are various accidentals (sharps and naturals) throughout. A double bar line is present between the two staves. The system ends with a double bar line and repeat dots.

Tempo

Handwritten musical notation for the third system. It consists of two staves. The top staff has notes: G4 (quarter), A4 (quarter), B4 (quarter), C5 (quarter), D5 (quarter), E5 (quarter), F5 (quarter), G5 (quarter). The bottom staff has notes: G4 (quarter), A4 (quarter), B4 (quarter), C5 (quarter), D5 (quarter), E5 (quarter), F5 (quarter), G5 (quarter). There are various accidentals (sharps and naturals) throughout. A 'pp' dynamic marking is present at the beginning. A slur is present over the first four notes of both staves.

Handwritten musical notation for the fourth system. It consists of two staves. The top staff has notes: G4 (quarter), A4 (quarter), B4 (quarter), C5 (quarter), D5 (quarter), E5 (quarter), F5 (quarter), G5 (quarter). The bottom staff has notes: G4 (quarter), A4 (quarter), B4 (quarter), C5 (quarter), D5 (quarter), E5 (quarter), F5 (quarter), G5 (quarter). There are various accidentals (sharps and naturals) throughout. A 'p' dynamic marking is present at the beginning. A slur is present over the first four notes of both staves.

Handwritten musical notation for the first system. The treble clef staff contains notes with accidentals: $\sharp 2$, $\flat 9$, $\flat 4$, and $\flat 0$. The bass clef staff contains notes with accidentals: $\sharp 0$, $\sharp 9$, and $\flat 3$. There are some scribbles and additional markings in the bass staff.

Handwritten musical notation for the second system. The treble clef staff shows a melodic line with notes and accidentals: $\sharp 2$, $\flat 9$, $\flat 4$, $\flat 0$, $\flat 9$, $\flat 4$, $\flat 0$, $\flat 9$, $\flat 4$. The bass clef staff shows an accompaniment with notes and accidentals: $\sharp 2$, $\flat 9$, $\flat 4$, $\flat 0$, $\flat 9$, $\flat 4$, $\flat 0$, $\flat 9$, $\flat 4$.

Handwritten musical notation for the third system. The treble clef staff contains notes with accidentals: $\sharp 2$, $\flat 9$, $\flat 4$, $\flat 0$, $\flat 9$, $\flat 4$. The bass clef staff contains notes with accidentals: $\sharp 2$, $\flat 9$, $\flat 4$, $\flat 0$, $\flat 9$, $\flat 4$. A circled ff dynamic marking is present in the bass staff.

Handwritten musical notation for the fourth system. The treble clef staff contains notes with accidentals: $\sharp 2$, $\flat 9$, $\flat 4$. The bass clef staff contains notes with accidentals: $\flat 0$, $\flat 9$, $\flat 4$. A circled f dynamic marking is present in the bass staff.

Handwritten musical notation for the first system, consisting of a treble staff and a bass staff. The treble staff contains a melodic line with notes and accidentals (sharps and flats) and is marked with a fermata. The bass staff contains a bass line with notes and accidentals, also marked with a fermata. There are bracketed groupings above the treble staff and below the bass staff.

Handwritten musical notation for the second system, consisting of a treble staff and a bass staff. The treble staff contains a melodic line with notes and accidentals, marked with a fermata. The bass staff contains a bass line with notes and accidentals, also marked with a fermata. There are bracketed groupings above the treble staff and below the bass staff.

Critique →

Handwritten musical notation for the third system, consisting of a treble staff. The staff contains a melodic line with notes and accidentals, including a triplet of notes and a final note with a fermata. There are bracketed groupings above the staff.

entry 4/8

Handwritten musical notation for the fourth system, consisting of a treble staff and a bass staff. The treble staff contains a melodic line with notes and accidentals, marked with a fermata and a circled 'P'. The bass staff contains a bass line with notes and accidentals, marked with a fermata and 'pp'. There are bracketed groupings above the treble staff and below the bass staff.

ritardando →

Adagio

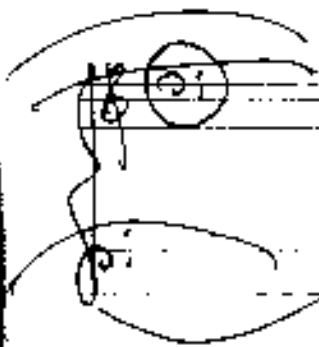
quasi

longa

C
o
o

C
o
o

FACE



Handwritten musical notation, first system. The top staff contains two measures of chords with a slur above them. The bottom staff contains two measures of chords with a slur above them. The notation includes various accidentals and stems.

Handwritten musical notation, second system. The top staff contains two measures of chords with a slur above them. The bottom staff contains two measures of chords with a slur above them. The notation includes various accidentals and stems.

Handwritten musical notation, third system. The top staff contains two measures of chords with a slur above them. The bottom staff contains two measures of chords with a slur above them. The notation includes various accidentals and stems.

Handwritten musical notation, fourth system. The top staff contains two measures of chords with a slur above them. The bottom staff contains two measures of chords with a slur above them. The notation includes various accidentals and stems. A circled 'p' is visible on the left side of the top staff.

(A)

bret *appassionata*

Handwritten musical notation for the first system. The upper voice contains a series of triplets with various accidentals (sharps, flats, naturals). The lower voice has a few notes, including a circled 'pp' dynamic marking.

Handwritten musical notation for the second system. The upper voice continues with triplet patterns and accidentals. The lower voice has a few notes, including a circled 'pp' dynamic marking.

Handwritten musical notation for the third system. The upper voice continues with triplet patterns and accidentals. The lower voice has a few notes, including a circled 'sf' dynamic marking.

Handwritten musical notation for the fourth system. The upper voice continues with triplet patterns and accidentals. The lower voice has a few notes, including a circled 'p' dynamic marking.

Handwritten musical notation for the first system. The top staff is in treble clef and the bottom staff is in bass clef. The music consists of several measures with notes, accidentals (sharps and flats), and slurs. The first measure has a treble clef and a bass clef. The second measure has a treble clef and a bass clef. The third measure has a treble clef and a bass clef. The fourth measure has a treble clef and a bass clef.

Handwritten musical notation for the second system. The top staff is in treble clef and the bottom staff is in bass clef. The music consists of several measures with notes, accidentals (sharps and flats), and slurs. The first measure has a treble clef and a bass clef. The second measure has a treble clef and a bass clef. The third measure has a treble clef and a bass clef. The fourth measure has a treble clef and a bass clef.

Handwritten musical notation for the third system. The top staff is in treble clef and the bottom staff is in bass clef. The music consists of several measures with notes, accidentals (sharps and flats), and slurs. The first measure has a treble clef and a bass clef. The second measure has a treble clef and a bass clef. The third measure has a treble clef and a bass clef. The fourth measure has a treble clef and a bass clef. The marking "legg." is written above the first measure.

Handwritten musical notation for the fourth system. The top staff is in treble clef and the bottom staff is in bass clef. The music consists of several measures with notes, accidentals (sharps and flats), and slurs. The first measure has a treble clef and a bass clef. The second measure has a treble clef and a bass clef. The third measure has a treble clef and a bass clef. The fourth measure has a treble clef and a bass clef. A sharp sign is written above the first measure.

(A) *breit* -

Handwritten musical notation for the first system. It features a treble clef and a circled **ff** dynamic marking. The notation includes notes with accidentals (sharps and naturals) and rests. The key signature appears to be one sharp (F#).

Handwritten musical notation for the second system. It includes a circled marking that reads **D. ci. al** with a circled cross symbol below it. The notation consists of notes and rests on a five-line staff.

A circled musical symbol or marking, possibly a clef or a specific instruction, located on the left side of the page.

pr. rit

Handwritten musical notation for the third system. It shows notes with dynamics like **pp** and **p**. The notation includes notes with accidentals and rests, with a slur under the final notes.

Finale

3

Allegro con brio (energetic - energisch)

Handwritten musical notation for the first system, measures 1-3. The key signature is one sharp (F#) and the time signature is 4/4. The first measure contains a treble clef, a sharp sign, and a note with an accent (^) on the staff. The bass clef part has a quarter note followed by a half note with an accent (^) and a slur over the next two notes. The second and third measures show similar rhythmic patterns with notes and slurs.

Handwritten musical notation for the second system, measures 4-6. The notation continues with treble and bass clefs, notes, slurs, and accents. The bass clef part shows a sequence of notes with a slur and an accent (^) over the final note of the phrase.

Handwritten musical notation for the third system, measures 7-9. The notation continues with treble and bass clefs, notes, slurs, and accents. The bass clef part shows a sequence of notes with a slur and an accent (^) over the final note of the phrase.

accentuato
gentiliper

(rit)

Tempo ①

(rit)

Handwritten musical notation for the first system, consisting of two staves. The top staff is in treble clef and the bottom in bass clef. The first measure contains several notes with accidentals (sharps and naturals). The following three measures contain rests, indicated by diagonal slashes.

Handwritten musical notation for the second system, consisting of two staves. The first measure contains notes with accidentals. The following three measures contain rests, indicated by diagonal slashes.

ritempo

Handwritten musical notation for the third system, consisting of two staves. The first measure contains notes with accidentals. The second measure contains notes with accidentals and a slur. The third and fourth measures are enclosed in a large, hand-drawn oval slur, indicating a ritardando or fermata. The notation includes various accidentals and note values.

Handwritten musical notation for the fourth system, consisting of two staves. The first measure contains notes with accidentals. The second measure contains notes with accidentals. The third and fourth measures are enclosed in a large, hand-drawn oval slur. The notation includes various accidentals and note values. The system ends with a double bar line.

Tempo ①

Handwritten musical notation for the first system. The treble staff contains a melodic line with notes and accidentals, starting with a circled 'P'. The bass staff contains a bass line with notes and accidentals. A large slur covers both staves across the first two measures.

Handwritten musical notation for the second system. The treble staff contains a melodic line with notes and accidentals. The bass staff contains a bass line with notes and accidentals. A large slur covers both staves across the first two measures.

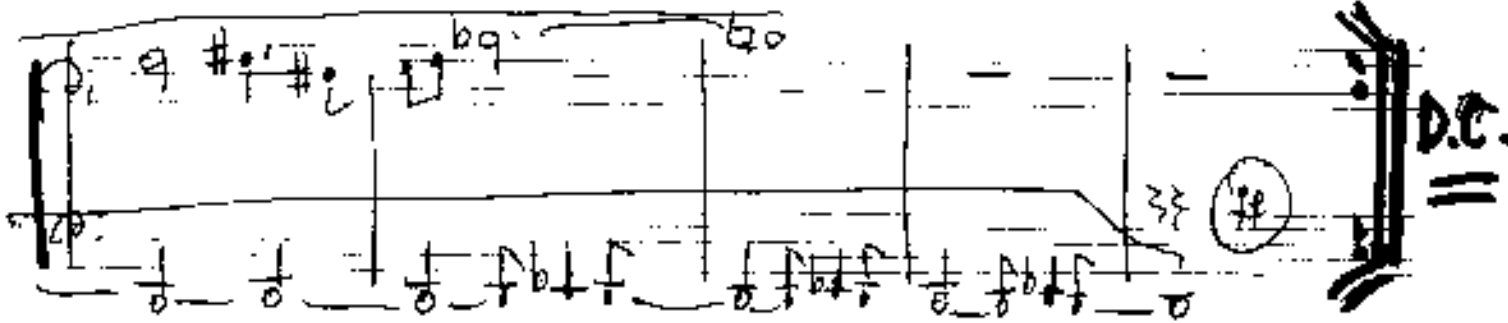
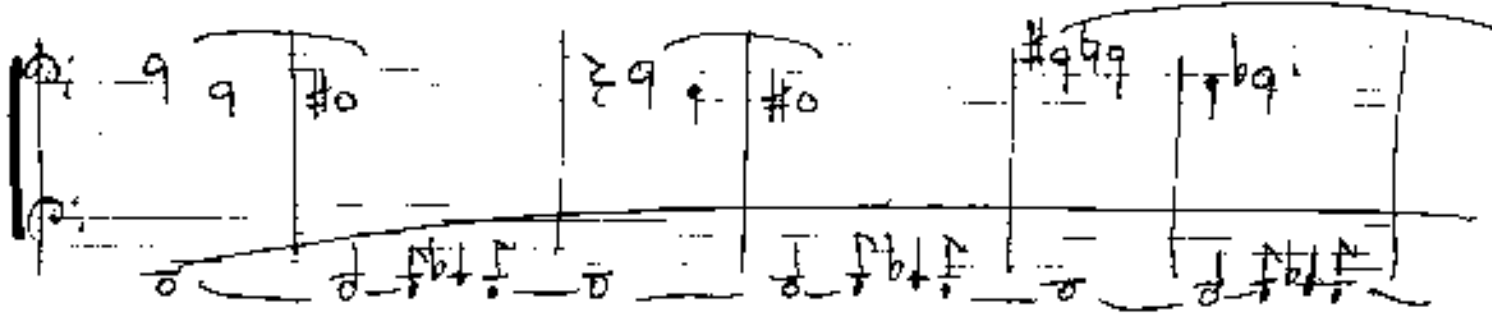
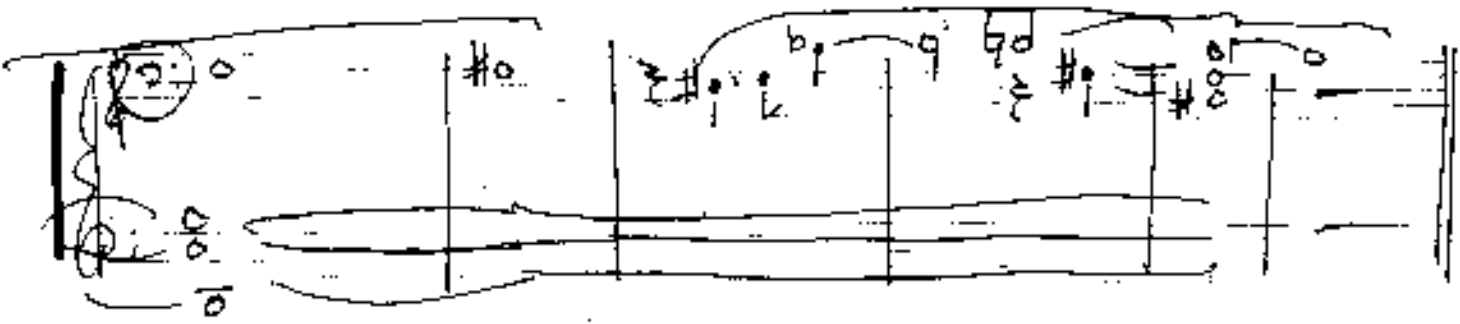
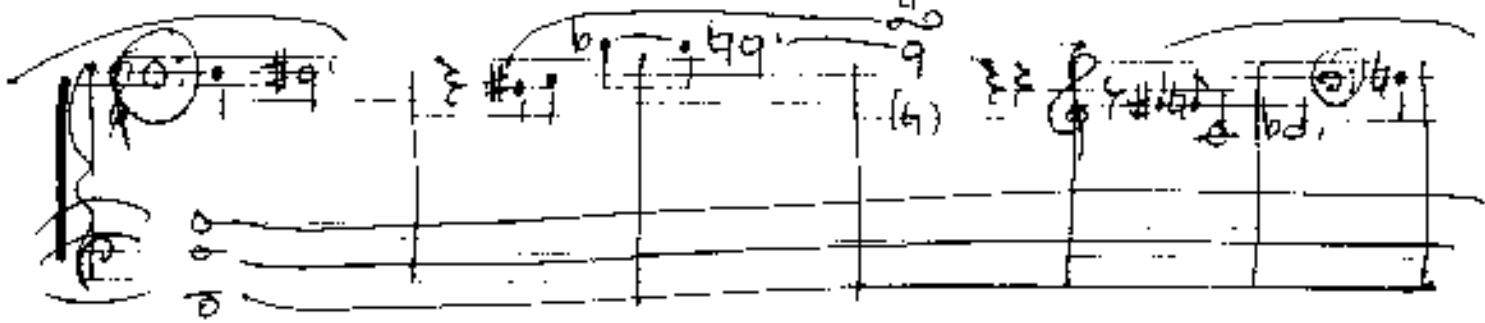
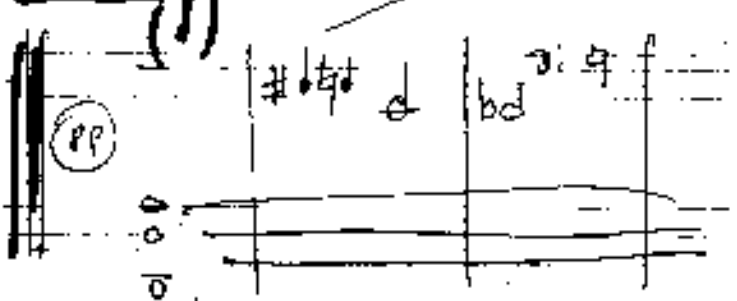
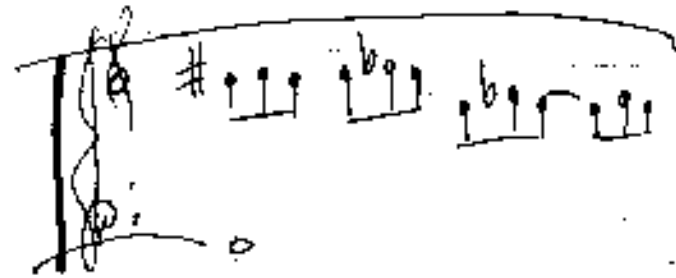
immer ruhiger werden →

Handwritten musical notation for the third system. The treble staff contains a melodic line with notes and accidentals. The bass staff contains a bass line with notes and accidentals. A large slur covers both staves across the first two measures.

Handwritten musical notation for the fourth system. The treble staff contains a melodic line with notes and accidentals. The bass staff contains a bass line with notes and accidentals. A large slur covers both staves across the first two measures.

Andante

Adagio (sehr langsam)



Tempo ① Allergro con brio (except) and Steigerung

4/4

Presto legato

(letzten 3 Takte nochmals)

Handwritten musical notation for the first system, featuring a treble clef and a bass clef with various notes and accidentals.

Handwritten musical notation for the second system, continuing the piece with treble and bass staves.

Handwritten musical notation for the third system, showing melodic lines in the treble clef and a bass line.

Handwritten musical notation for the fourth system, including a circled 4/4 time signature and a "rit." marking.

breve

longa

Handwritten musical notation for the fifth system, featuring a treble clef, a common time signature, and a signature.

Sonate 1980 3 Fätze

für Orgel Solo No 2.

Adolf Scherhan

(Improvisationen über Sonate No. 1)

N.B.

(Wiederholung um
Lilke person
beachten)

1

frei gestaltet - rubato -

Fantasia

Handwritten musical notation for the first system. It features a treble clef, a key signature of one sharp (F#), and a 3/8 time signature. The music includes a circled *ppp* dynamic marking, a fermata over the first measure, and a change to a 4/8 time signature. The notation includes various accidentals and slurs.

Handwritten musical notation for the second system, continuing the piece. It maintains the 3/8 and 4/8 time signatures and includes a fermata over the first measure.

diat. cluster

Handwritten musical notation for the third system, featuring a "diat. cluster" annotation. The notation shows a dense group of notes in the treble clef.

Handwritten musical notation for the fourth system, concluding the piece with various rhythmic patterns and accidentals.

Handwritten musical notation for the first system. It features a treble clef and a 3/8 time signature. The first measure contains a complex chordal structure with a sharp sign and a slash. The second measure is marked with a 4/8 time signature and contains a similar complex structure. The third and fourth measures are chords with a 'y' above them.

Handwritten musical notation for the second system. It features a treble clef and a 3/8 time signature. The first measure contains a complex chordal structure with a sharp sign and a slash. The second measure is marked with a 4/8 time signature and contains a similar complex structure. The third and fourth measures are chords with a 'y' above them.

breit —

Handwritten musical notation for the third system. It features a treble clef and a 3/8 time signature. The first measure contains a complex chordal structure with a sharp sign and a slash. The second measure is marked with a 4/8 time signature and contains a similar complex structure. The third and fourth measures are chords with a 'y' above them.

Handwritten musical notation for the fourth system. It features a treble clef and a 3/8 time signature. The first measure contains a complex chordal structure with a sharp sign and a slash. The second measure is marked with a 4/8 time signature and contains a similar complex structure. The third and fourth measures are chords with a 'y' above them.

Handwritten musical notation for the first system. The top staff is in treble clef and the bottom staff is in bass clef. The music consists of two measures. The first measure has a treble staff with a series of eighth notes and a bass staff with a half note and a quarter note. The second measure has a treble staff with a series of eighth notes and a bass staff with a half note and a quarter note. There are some handwritten annotations above the notes.

rit

CODA

Handwritten musical notation for the second system. The top staff is in treble clef and the bottom staff is in bass clef. The music consists of two measures. The first measure has a treble staff with a series of eighth notes and a bass staff with a half note and a quarter note. The second measure has a treble staff with a series of eighth notes and a bass staff with a half note and a quarter note. There are some handwritten annotations above the notes.

3art

Handwritten musical notation for the third system. The top staff is in treble clef and the bottom staff is in bass clef. The music consists of two measures. The first measure has a treble staff with a series of eighth notes and a bass staff with a half note and a quarter note. The second measure has a treble staff with a series of eighth notes and a bass staff with a half note and a quarter note. There are some handwritten annotations above the notes.

Handwritten musical notation for the fourth system. The top staff is in treble clef and the bottom staff is in bass clef. The music consists of two measures. The first measure has a treble staff with a series of eighth notes and a bass staff with a half note and a quarter note. The second measure has a treble staff with a series of eighth notes and a bass staff with a half note and a quarter note. There are some handwritten annotations above the notes.

rit

brist (appassionata)

ff

(poco rit)

CODA

Lento (♩)

37

2

Leute (♩)

Leute (♩)

ruhige (♩)

Leute (♩)

ruhige (♩)

Leute (♩)

ruhige (♩)

suf



Handwritten musical notation for a section labeled 'suf'. It consists of two staves. The upper staff has a treble clef and a key signature of one flat (B-flat). The lower staff has a bass clef. The music features a melodic line in the upper staff and a bass line in the lower staff. A large slur covers the final two measures of the section, which end with a double bar line. The word 'CODA' is written in a box at the top right of the page.

excepție Adâtel (sech) rubato

Handwritten musical notation for a section labeled 'excepție Adâtel (sech) rubato'. It consists of two staves. The upper staff has a treble clef and a key signature of one flat (B-flat). The lower staff has a bass clef. The music features a melodic line in the upper staff and a bass line in the lower staff. The tempo is marked 'ff' (fortissimo). The section is marked with a large '4' and '8' in the upper left corner, possibly indicating a 4/8 time signature. The music is characterized by a slow, rubato feel.

Handwritten musical notation for a section. It consists of two staves. The upper staff has a treble clef and a key signature of one flat (B-flat). The lower staff has a bass clef. The music features a melodic line in the upper staff and a bass line in the lower staff. The section is marked with a large '4' and '8' in the upper left corner, possibly indicating a 4/8 time signature. The music is characterized by a slow, rubato feel.

accel

Handwritten musical notation for a section labeled 'accel'. It consists of two staves. The upper staff has a treble clef and a key signature of one flat (B-flat). The lower staff has a bass clef. The music features a melodic line in the upper staff and a bass line in the lower staff. The tempo is marked 'accel' (accelerando). The section is marked with a large '4' and '8' in the upper left corner, possibly indicating a 4/8 time signature. The music is characterized by a fast, accelerating feel.

(1) except

Handwritten musical notation for the first system. It consists of two staves. The top staff is in treble clef and contains a melodic line with notes G4, A4, B4, C5, and D5, with a sharp sign above the C5. The bottom staff is in bass clef and contains a bass line with notes G2, F2, E2, and D2, with a flat sign above the G2. A large '2/4' time signature is written in the center. A slur covers the first two measures of both staves, and another slur covers the last two measures. There are also some handwritten symbols like 'y' and '7'.

Handwritten musical notation for the second system. It consists of two staves. The top staff is in treble clef and contains a melodic line with notes G4, A4, B4, and C5, with a sharp sign above the C5. The bottom staff is in bass clef and contains a bass line with notes G2, F2, E2, and D2, with a flat sign above the G2. A '4/4' time signature is written in the top left. There are slurs over the first two measures of both staves and the last two measures of both staves.

(rit...)

Handwritten musical notation for the third system. It consists of two staves. The top staff is in treble clef and contains a melodic line with notes G4, A4, B4, and C5, with a sharp sign above the C5. The bottom staff is in bass clef and contains a bass line with notes G2, F2, E2, and D2, with a flat sign above the G2. A '4/4' time signature is written in the top left. There are slurs over the first two measures of both staves and the last two measures of both staves. The system ends with a double bar line and a fermata-like symbol.

Solo best (aber nicht solleysend)

gr. C rit.

D.C.

al

Handwritten musical notation for a guitar piece. The notation is on a five-line staff with a treble clef. The key signature has one sharp (F#). The time signature is 4/4. The first measure contains a circled "COPH" and a circled "pp". The music features a series of notes with stems, some of which are beamed together. There are also some rests and dynamic markings.

Handwritten musical notation for a guitar piece. The notation is on a five-line staff with a treble clef. The key signature has one sharp (F#). The time signature is 4/4. The word "Lunga" is written above the staff. The music features a series of notes with stems, some of which are beamed together. There are also some rests and dynamic markings.

Part 3

7 DAGIO

Handwritten musical notation for a guitar piece. The notation is on a five-line staff with a treble clef. The key signature has one sharp (F#). The time signature is 4/4. The music features a series of notes with stems, some of which are beamed together. There are also some rests and dynamic markings.

Handwritten musical notation for a guitar piece. The notation is on a five-line staff with a treble clef. The key signature has one sharp (F#). The time signature is 4/4. The music features a series of notes with stems, some of which are beamed together. There are also some rests and dynamic markings.

git

Allegro con moto (d)

Handwritten musical notation for the first system, featuring a treble clef, a key signature of one sharp (F#), and a 4/4 time signature. The music consists of two staves with various notes, rests, and dynamic markings like 'pp' and 'f'.

Handwritten musical notation for the second system, continuing the piece with two staves and similar notation to the first system.

Handwritten musical notation for the third system, showing a continuation of the musical piece with two staves.

Handwritten musical notation for the fourth system, featuring a treble clef and a key signature of one sharp. It includes dynamic markings such as 'mf' and 'f'.

Handwritten musical notation for the fifth system, concluding the piece with two staves and a circled 'ff' dynamic marking at the end.

ritiro (sehr langsam)



poco rit

Gulup

Handwritten musical notation for the first system. The treble clef staff contains notes with various accidentals (sharps, flats, naturals) and a circled 'p' (piano). The bass clef staff contains notes with accidentals and a circled '9'.

Handwritten musical notation for the second system. The treble clef staff has notes with accidentals. The bass clef staff has notes with accidentals and a circled '9'.

(mit...)

Handwritten musical notation for the third system. The treble clef staff has notes with accidentals. The bass clef staff has notes with accidentals and a circled '9'.

ins Tempo ① übergehen

Handwritten musical notation for the fourth system. It includes a circled 'p' and a circled '9'. The system concludes with a double bar line and the marking 'D.C.' (Da Capo).

Tempo ①

Handwritten musical notation for the fifth system. The treble clef staff has notes with accidentals. The bass clef staff has notes with accidentals and a circled '9'.

Handwritten musical notation for the sixth system. The treble clef staff has notes with accidentals. The bass clef staff has notes with accidentals and a circled '9'.

Handwritten musical score for piano, consisting of two systems of staves. The notation includes treble and bass clefs, various note values, rests, and dynamic markings such as *pp*, *ppp*, *pp*, and *ppp*. The score is divided into measures by vertical bar lines.

Key features of the score include:

- System 1 (Top):** Contains the first two systems of music. It features complex rhythmic patterns and dynamic markings like *pp* and *ppp*. A section is marked *ppp* and includes a circled *ppp* marking.
- System 2 (Bottom):** Contains the second two systems of music. It includes a section marked *ppp* and a circled *ppp* marking. The notation continues with various note values and rests.
- Handwritten Annotations:** The word "Trio" is written in a circle in the second system. The word "Solo" is written at the bottom right. There are also some handwritten numbers and symbols, such as "5 5" and "6 6", which appear to be fingering or performance instructions.
- Staff Orientation:** The staves are arranged in two columns, with the right column containing the first system and the left column containing the second system.



Coda

breit

rit



47

Handwritten notes and accidentals

Musical notation with notes, rests, and slurs

Maestoso

Musical notation for the first system of the Maestoso section

Musical notation for the second system of the Maestoso section

Musical notation for the third system of the Maestoso section

Musical notation with notes and slurs, including the word 'Lunga'

Musical notation with notes and slurs, including the word 'Fine'