

1

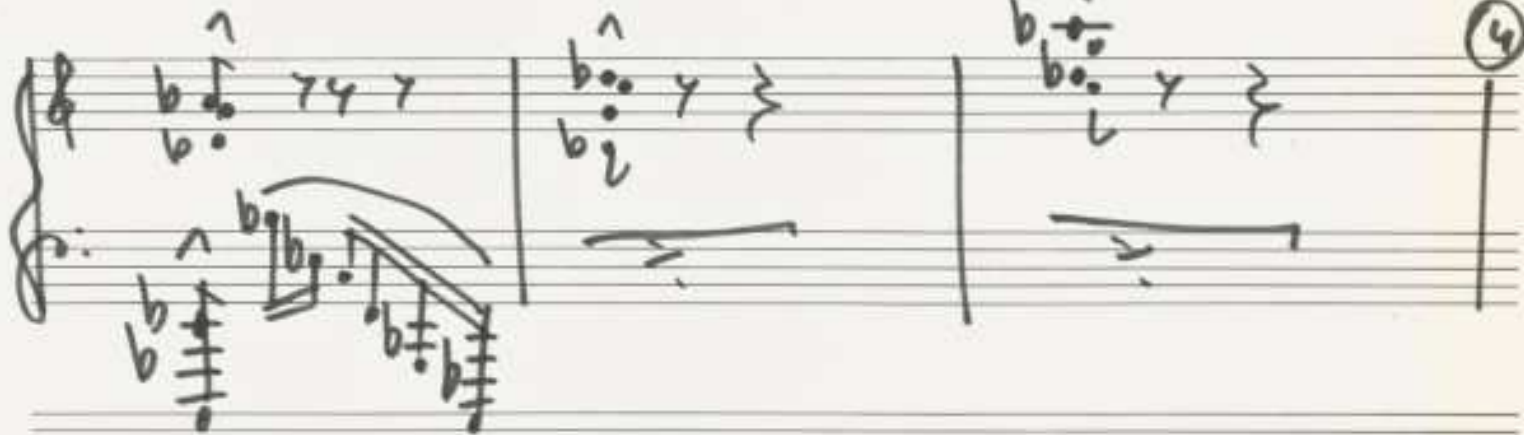
Adolf Scherbaum

pesante (aber nicht schleppend)

Handwritten musical score for the first system, consisting of two staves. The top staff is in treble clef with a key signature of one sharp (F#) and a 4/4 time signature. The bottom staff is in bass clef with a 4/4 time signature. The music features a melody with accents and slurs, and a bass line with chords and rhythmic markings. A circled '1' is written above the second measure of the top staff.

Handwritten musical score for the second system, consisting of two staves. The top staff is in treble clef and the bottom staff is in bass clef. The music continues with a melody and bass line, including a large slur over the final measures. A circled '2' is written above the first measure of the top staff, and a circled '3' is written above the final measure of the top staff.

3



4



5



Gedankensplitter (für Klavier Solo) 1983

ADOLF SCHERBAUM Linz Unfahr  
Hauptstr. 35/9

Handwritten musical score for the first system, marked with a circled '6' in the top right corner. The score consists of two staves. The upper staff is in treble clef with a key signature of one sharp (F#) and contains a melodic line with slurs and accents. The lower staff is in bass clef with the same key signature and contains a bass line with slurs and accents. The system concludes with a double bar line.

Handwritten musical score for the second system, marked with a circled '7' in the top right corner. The score consists of two staves. The upper staff is in treble clef with a key signature of one sharp (F#) and contains a melodic line with slurs and accents. The lower staff is in bass clef with the same key signature and contains a bass line with slurs and accents. The system concludes with a double bar line.

Pedal

Leuto

Pedal aus

ruhiger

Handwritten musical score for the first system. The top staff is a vocal line in treble clef with a key signature of one sharp (F#). It contains three measures of music with notes marked with accents (^) and slurs. The bottom staff is a piano accompaniment in treble clef, starting with a circled 'P' for piano. It features a triplet of notes in the first measure, followed by slurs and a final triplet in the third measure. A circled '5' is written at the end of the system.

Handwritten musical score for the second system. The top staff is a vocal line in treble clef with a key signature of one flat (Bb). It contains three measures of music with notes marked with accents (^) and slurs. The bottom staff is a piano accompaniment in treble clef, starting with a circled 'P' for piano. It features a triplet of notes in the first measure, followed by slurs and a final triplet in the third measure. A circled '9' is written at the end of the system. Below the piano part, the word "git" is written with a dashed line underneath it.

Lento

pp frei

10

11

12

13

14



lento

Handwritten musical notation for a slow section. The top staff is in treble clef with a key signature of two sharps (F# and C#). It contains two measures of music with notes and rests, and a fermata over the second measure. The word "lento" is written above the first measure, and "brava" is written above the second measure. The bottom staff is in bass clef and contains two measures of music with notes and rests, and a fermata over the second measure. The word "Pedal pp" is written above the first measure. To the right of the bottom staff, there are four vertical lines and a large bracket-like symbol. Below the bottom staff, there is a box containing the number "2".

Allegro agitato

Handwritten musical notation for an allegro section. The top staff is in treble clef with a key signature of two sharps (F# and C#). It contains four measures of music with notes and rests. The word "Allegro agitato" is written above the first measure. The bottom staff is in bass clef and contains four measures of music with notes and rests. The word "4 pp=" is written above the first measure. To the right of the bottom staff, there is a circled number "1" and a treble clef symbol. Below the bottom staff, there is a large bracket-like symbol.

*sehr bewegt*

②

③

④

Handwritten musical score for system 5. The system consists of two staves. The upper staff is in treble clef with a key signature of one sharp (F#) and contains a melodic line with a triplet of eighth notes in the first measure, followed by a series of eighth notes. The lower staff is in bass clef with a key signature of one sharp (F#) and contains a bass line with a triplet of eighth notes in the first measure. The system concludes with a double bar line and a circled number 5.

Handwritten musical score for system 6. The system consists of two staves. The upper staff is in treble clef with a key signature of one sharp (F#) and contains a melodic line with accents and a series of eighth notes. The lower staff is in bass clef with a key signature of one sharp (F#) and contains a bass line with a triplet of eighth notes in the first measure. The system concludes with a double bar line and a circled number 6.

Handwritten musical score for system 7. The system consists of two staves. The upper staff is in treble clef with a key signature of one sharp (F#) and contains a melodic line with accents and a series of eighth notes. The lower staff is in bass clef with a key signature of one sharp (F#) and contains a bass line with a triplet of eighth notes in the first measure. The system concludes with a double bar line and a circled number 7.



Handwritten musical score for 'Gedankenspieler' by Adolf Scherbaum. The score is written on three systems of staves. The first system has a treble clef and a key signature of one sharp (F#). The second system has a treble clef and a key signature of two sharps (F# and C#). The third system has a treble clef and a key signature of two sharps (F# and C#). The score includes various musical notations such as notes, rests, dynamics (p), accents (^), slurs, and fingerings. There are circled numbers 8, 9, 10, and 11 marking specific measures. The notation is dense and includes many accidentals and ornaments.

12

13

~~14~~



Larga (♩)

3

2

1

3

The image shows a handwritten musical score for guitar, consisting of two systems of staves. The top system features a vocal line on a single staff and a guitar accompaniment on a six-line staff. The vocal line begins with the tempo marking 'Larga (♩)'. The guitar accompaniment includes a key signature of one flat (B-flat) and a time signature of 3/4. The first system contains four measures of music. The second system contains four measures, ending with a double bar line and the word 'Fine'. Various musical notations are present, including notes, rests, accidentals (sharps, flats, naturals), and dynamic markings such as 'pp', 'p', 'f', and 'cresc.'. There are also handwritten annotations in parentheses, such as '(wie pizz)' and '(cresc)'. Circled numbers (1, 2, 3) are placed above the staves, likely indicating specific measures or sections. The handwriting is in black ink on aged paper.

(wie pizz)

f

cresc

Fine

Handwritten musical notation for the first system, featuring a treble clef and a bass clef. The treble clef part has a key signature of two sharps (F# and C#) and a common time signature. The bass clef part has a key signature of one sharp (F#) and a common time signature. Both parts have dynamic markings like 'pp' and 'p'. The notation includes various note values, rests, and slurs.

Handwritten musical notation for the second system, featuring a treble clef and a bass clef. The treble clef part has a key signature of one flat (Bb) and a common time signature. The bass clef part has a key signature of one flat (Bb) and a common time signature. Both parts have dynamic markings like 'pp Pedal' and 'p'. The notation includes various note values, rests, and slurs.

D.C.  
al Fine



4

Presto (protest) legg.

mf 2

pp  
4 legg.  
(Prestissimo)

2

4

CODA

Handwritten musical score for a piece, likely a Minuet in G major, BWV 504. The score is written on three systems of staves.

**System 1:** Features a treble clef and a key signature of one flat (F major). It includes dynamic markings such as *p* and *f*. A circled number 5 is written above the staff.

**System 2:** Continues the piece with various dynamics including *ff*, *pp*, and *ffp*. A circled number 6 is written above the staff. The system concludes with a double bar line and a circled number 7.

**System 3:** Labeled "CODA" on the left, it features a treble clef and a key signature of one sharp (D major). It includes dynamic markings like *pp* and *ppp*. The piece ends with a double bar line and a flourish.

**Right Margin:** Contains the circled number 7, the text "26+", "D.C.", and a treble clef.

5

seba rautaj (1)

Handwritten musical score for the first system. It consists of two staves. The top staff is in treble clef with a key signature of one sharp (F#) and a common time signature. It contains a melodic line with notes G4, A4, B4, C5, and D5, with various dynamics and articulations. A circled '3' is written above the staff. The bottom staff is in bass clef with a common time signature, containing a bass line with notes G2, F2, E2, D2, and C2, with various dynamics and articulations. A circled '3' is written above the staff. The word 'Pedal' is written below the bass staff with a double bar line and a fermata symbol.

Handwritten musical score for the second system. It consists of two staves. The top staff is in treble clef with a key signature of one sharp (F#) and a common time signature. It contains a melodic line with notes G4, A4, B4, C5, and D5, with various dynamics and articulations. A circled '3' is written above the staff. The bottom staff is in bass clef with a common time signature, containing a bass line with notes G2, F2, E2, D2, and C2, with various dynamics and articulations. A circled '3' is written above the staff. The word 'Poco rit...' is written below the bass staff. A circled '3' is written above the staff.

**CODA**

*appassionata*

*tr. rascher*

Pedal

5

6



pesante (frei)

dim + rit ...

7

sehr langsam

8

rit

D. Li. ol

© COPA

♩ COPA *Lento*

Pedal *pp*



*geh.....*



*(verklingen lassen...)*

6

*Prestissimo (furioso)*

Handwritten musical score for the first system, measures 1-3. The score is in 2/4 time with a key signature of one sharp (F#). It features a treble and bass staff with complex rhythmic patterns, including sixteenth and thirty-second notes, and various accidentals. A circled '1' is at the end of the system.

Handwritten musical score for the second system, measures 4-6. The score continues with similar complex rhythmic patterns and accidentals. A circled '2' is at the end of the system.

Handwritten musical score for the first system, measures 1-3. The top staff is in treble clef and the bottom in bass clef. Measure 1 contains chords with accents and slurs. Measure 2 has a fermata. Measure 3 has a "Pedal" marking and a melodic line in the bass staff. A circled "3" is at the end.

Handwritten musical score for the second system, measures 4-6. Similar notation to the first system. Measure 4 has a "Pedal" marking. Measure 6 has a circled "6".

Handwritten musical score for system 5, measures 1-4. The notation includes complex rhythmic patterns with triplets and sixteenth notes. The music is in G major (one sharp). A fermata is placed over the final measure. A circled '5' is written to the right of the system.

Handwritten musical score for system 6, measures 1-4. The notation includes complex rhythmic patterns with triplets and sixteenth notes. The music is in G major (one sharp). A fermata is placed over the final measure. A circled '6' is written to the right of the system.

Cluster



Handwritten musical score for two staves. The top staff is in treble clef and the bottom staff is labeled "Pedal" and also in treble clef. The music features complex chords and melodic lines. A circled number "7" is at the end of the first system. The bottom staff begins with a dynamic marking  $pp = b$ .

Handwritten musical score for two staves. The top staff is in treble clef and the bottom staff is in treble clef. The music features complex chords and melodic lines. A circled number "8" is at the end of the first system. The bottom staff begins with a dynamic marking  $pp = b$ . The notation includes many accidentals and slurs.

D.C.  
mit ||:|| dann  
weiter!

Handwritten musical score for the first system. It consists of two staves: a treble clef staff and a bass clef staff. The treble staff contains four measures of music, each with a dynamic marking 'y' and a series of notes with accents (^) and slurs. The bass staff contains four measures of music, each with a dynamic marking 'y' and a series of notes with accents (^) and slurs. The key signature has one sharp (F#) and one flat (Bb). The system ends with a double bar line.

Handwritten musical score for the second system. It features a treble clef staff and a bass clef staff. The treble staff begins with a circled key signature change from one sharp to one flat, with a '9' below it. The bass staff has a 'Pedal' label written vertically on the left. The music continues with notes and slurs. A large graphic flourish, resembling a stylized 'L' or a flourish, is drawn over the bottom of the bass staff. The word 'Lunge' is written in the middle of the system. The system ends with a double bar line.

7

Allegretto (scherzando)

Handwritten musical score for the first system of 'Allegretto (scherzando)'. The system consists of two staves: a treble clef staff and a bass clef staff. The time signature is 4/4. The music begins with a piano (p) dynamic marking and an accent (^) over the first note. The bass line features a rhythmic pattern of quarter notes with stems pointing down, and the treble line has dotted quarter notes with stems pointing up. The system concludes with a circled '7'.

Handwritten musical score for the second system of 'Allegretto (scherzando)'. The system continues with two staves. The treble clef staff features a melodic line with eighth notes and accents (^). The bass clef staff has a rhythmic accompaniment with stems pointing down. The system ends with a circled '2'.



*Presto*

legg.

⑥

P

⑦







*(frei Prestissimo (legg.)*

pp  
Pedale

8

D.C.  
(ohne ||: ||)

*Prestissimo*

pp

8