

L.v. BEETHOVEN



W.A. MOZART



# NOTENHEFT

F. SCHUBERT



J. HAYDN



J. STRAUSS



schreitend -

Solo Violine

1st Violin

Br.

Ct. Baß

Viola

Cello

Viola

Schlagzeug

pp

(f)

Solo Violine sehr  
- (solistisch)

(1)

Konzert für Violine und Orchester.

24 Violinen - 10 Viola - 8 Celli - 6-7 Baß -

Schlagzeug



Handwritten musical score for the first system, marked with a circled '2' in the top right corner. The score consists of five staves:

- Staff 1 (Violin I):** Contains a melodic line with various accidentals (flats and naturals) and slurs. It begins with a dynamic marking of  $p$ .
- Staff 2 (Violin II):** Contains a sustained note with a dynamic marking of  $f$ .
- Staff 3 (Viola):** Contains a sustained note with a dynamic marking of  $f$ .
- Staff 4 (Cello):** Contains a melodic line with slurs and a dynamic marking of  $f$ .
- Staff 5 (Bass):** Contains a rhythmic accompaniment with a dynamic marking of  $f$ .

Handwritten musical score for the second system, marked with a circled '3' in the top right corner. The score consists of five staves:

- Staff 1 (Violin I):** Contains a melodic line with slurs and a dynamic marking of  $f$ .
- Staff 2 (Violin II):** Contains a sustained note with a dynamic marking of  $p$ .
- Staff 3 (Viola):** Contains a sustained note with a dynamic marking of  $p$ .
- Staff 4 (Cello):** Contains a melodic line with slurs and a dynamic marking of  $f$ .
- Staff 5 (Bass):** Contains a rhythmic accompaniment with a dynamic marking of  $f$ .

④

Handwritten musical score for system 4, measures 1-3. The score includes staves for strings, woodwinds, and piano. The piano part has lyrics "du komm" and "du komm".

⑤

Handwritten musical score for system 5, measures 1-3. The score includes staves for strings, woodwinds, and piano. The piano part has lyrics "du komm" and "du komm".

Handwritten musical score for system 6. It consists of five staves: Violin I, Violin II, Viola, Cello/Double Bass, and Piano. The music is in 2/4 time and features complex rhythmic patterns with many slurs and accents. The first staff has a circled '6' at the end. Dynamics include *p* and *f*.

Handwritten musical score for system 7. It consists of five staves: Violin I, Violin II, Viola, Cello/Double Bass, and Piano. The music continues with complex rhythmic patterns. The first staff has a circled '7' at the end. Dynamics include *f*. The word "Pedal" is written at the bottom of the piano staff, with a circled *f* above it. The word "Pedal" is also written at the bottom right of the system.

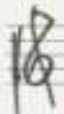


Handwritten musical score for the first system, featuring five staves. The notation includes notes, rests, and dynamic markings such as  $\text{ff}$  and  $\text{p}$ . A circled  $\text{ff}$  is present on the third staff. The music is written in a key with one sharp (F#) and a common time signature (C).

Handwritten musical score for the second system, continuing the piece with five staves. The notation includes notes, rests, and dynamic markings such as  $\text{p}$  and  $\text{ff}$ . A circled  $\text{p}$  is present on the second staff, and a circled  $\text{ff}$  is present on the third staff. The music is written in a key with one sharp (F#) and a common time signature (C).

(Zeit + über...)

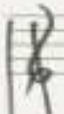
(pang frei)



Vibraphon

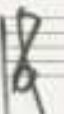
pp =

Pedale



p <

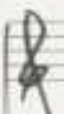
Pedale aus



ritabato

ritabato

Pedale ff <



Handwritten musical score for the first system. The top staff contains a series of chords with accents (^) and a fermata. The bottom staff is marked "Pedal ff" and contains a dense texture of notes with flats (b) and accents (^). A large bracket spans across both staves, indicating a sustained pedal point.

Handwritten musical score for the second system. It features a series of chords with accents (^) and flats (b). A large slur covers the final part of the system, with the word "Lunga" written above it. The system concludes with a circled measure number "11" and a circled "P" (piano) marking.

*Lento (freies Violinsolo) Solo ruhig!*

Handwritten musical score for the third system. The top staff is in 6/4 time and marked "Lento". It contains a melodic line with notes and rests, including a circled measure number "12". The bottom staff contains a bass line with notes and rests, also marked "Lento". A circled "P" (piano) marking is present at the end of the system.



sonst bewegt - subito (freies Violinsolo)

(A)

Prestissimo - sehr virtuos - brillant →

(B)

(C)

(D)

(E)

(F)

Handwritten musical notation on a five-line staff. The key signature is one flat (B-flat). The notation consists of several chords with upward-pointing arrows above them, indicating fingerings. A circled '3' is written in the top right corner. A circled 'f' is written in the bottom left corner.

Handwritten musical notation on a five-line staff. The key signature is one flat (B-flat). The notation consists of several chords with upward-pointing arrows above them. A circled '4' is written in the top right corner.

Handwritten musical notation on a five-line staff. The key signature is one flat (B-flat). The notation consists of several chords with upward-pointing arrows above them. A circled '7' is written in the top right corner.

Handwritten musical notation on a five-line staff. The key signature is one flat (B-flat). The notation consists of several chords with upward-pointing arrows above them. A circled 'K' is written in the top right corner. The word "dim" is written below the first few notes.

Handwritten musical notation on a five-line staff. The key signature is one flat (B-flat). The notation consists of several chords with upward-pointing arrows above them. A circled 'L' is written in the top right corner. A circled 'f' is written in the bottom left corner.

Handwritten musical notation on a five-line staff. The key signature is one flat (B-flat). The notation consists of several chords with upward-pointing arrows above them. A circled '13' is written in the top right corner. The word "Lento" is written above the first few notes. The word "rit" is written below the first few notes. The word "dim" is written below the last few notes. A circled 'p' is written in the bottom left corner.

rit... + dim... ~~~~~

D.C. al  
COPPA

⊕ CODA! (ganz frei - sehr ruhig ausklingen)

lento 1

Violin I:  $pp$

Violin II:  $pp$

Viola:  $pp$

Cello/Double Bass:  $pp$

Vibraphon

Pedal  $pp$

Violin I:  $p$

Violin II:  $pp$

Viola:  $pp$

Cello/Double Bass:  $pp$

Vibraphon

Pedal  $p$



Handwritten musical score for the first system, featuring five staves. The notation includes complex chords and melodic lines with various dynamics and articulation marks.

- Staff 1 (top): Complex chords with notes like  $\sharp f$ ,  $\sharp \sharp$ ,  $\sharp \sharp$ ,  $\sharp \sharp$ ,  $\sharp \sharp$ . Includes dynamics  $\sharp f =$  and  $\sharp f$ .
- Staff 2: Rests, dynamics  $ppp$ , and notes  $\sharp \sharp$ .
- Staff 3: Rests, dynamics  $ppp$ , and notes  $\sharp \sharp$ .
- Staff 4: Rests, dynamics  $ppp$ , and notes  $\sharp \sharp$ .
- Staff 5 (bottom): Melodic line with notes  $\sharp \sharp$ ,  $\sharp \sharp$ ,  $\sharp \sharp$ ,  $\sharp \sharp$ ,  $\sharp \sharp$ .

Handwritten musical score for the second system, featuring five staves. The notation includes complex chords and melodic lines with various dynamics and articulation marks.

- Staff 1 (top): Complex chords with notes  $\sharp \sharp$ ,  $\sharp \sharp$ ,  $\sharp \sharp$ ,  $\sharp \sharp$ . Includes dynamics  $fpp$  (circled) and  $ppp$ .
- Staff 2: Rests, dynamics  $ppp$ , and notes  $\sharp \sharp$ .
- Staff 3: Rests, dynamics  $ppp$ , and notes  $\sharp \sharp$ .
- Staff 4: Rests, dynamics  $ppp$ , and notes  $\sharp \sharp$ .
- Staff 5 (bottom): Melodic line with notes  $\sharp \sharp$ ,  $\sharp \sharp$ ,  $\sharp \sharp$ ,  $\sharp \sharp$ ,  $\sharp \sharp$ . Includes dynamics  $pp$  and  $ppp$ .

(B) circled at the end of the system.

(zeit)

Pedal aus

Handwritten musical score for strings, featuring various dynamics and performance instructions. The score is divided into measures by vertical bar lines.

**Staff 1 (Violin):** Dynamics include *pp* and *ppp*. Includes a *Fine* marking at the end.

**Staff 2 (Violin):** Dynamics include *ppp*. Includes the instruction *Lupa* (Lupa).

**Staff 3 (Viola):** Dynamics include *ppp*. Includes the instruction *Lupa*.

**Staff 4 (Cello):** Dynamics include *ppp*. Includes the instruction *Vibr.* (Vibrato).

**Staff 5 (Double Bass):** Dynamics include *ppp*. Includes the instruction *Portato* (Portato).

**Staff 6 (Percussion):** Dynamics include *ppp*. Includes the instruction *Schlags.* (Schlags).

Below the staffs, there is a large handwritten instruction: *(sehr langsam - ausklingen)*.

**lento**

**No. 2. Satz (2)**

①

deinsten

pp =  $b \frac{1}{2} \frac{1}{4} \frac{1}{4} \# \frac{1}{2}$   $b \frac{1}{2} \frac{1}{4} \frac{1}{4} \frac{1}{4}$   $> \frac{1}{2} \frac{1}{4} \frac{1}{4} \frac{1}{4}$

pp =  $\frac{1}{2} \frac{1}{4} \frac{1}{4}$  unis.  $\frac{1}{2}$   $\frac{1}{4}$   $> \frac{1}{2}$

pp =  $b \frac{1}{2} \frac{1}{4} \frac{1}{4} \# \frac{1}{2}$   $b \frac{1}{2} \frac{1}{4} \frac{1}{4} \frac{1}{4}$   $> \frac{1}{2} \frac{1}{4} \frac{1}{4} \frac{1}{4}$

pp  $\frac{1}{2} \frac{1}{4} \frac{1}{4} \frac{1}{4}$   $\frac{1}{2} \frac{1}{4} \frac{1}{4}$   $> \frac{1}{2} \frac{1}{4} \frac{1}{4} \frac{1}{4}$

②

p =  $b \frac{1}{2} \frac{1}{4} \frac{1}{4} \frac{1}{2}$   $b \frac{1}{2} \frac{1}{4} \frac{1}{4} \frac{1}{2}$   $> b \frac{1}{2} \frac{1}{4} \frac{1}{4} \frac{1}{2}$

p =  $\frac{1}{2} \frac{1}{4} \frac{1}{4}$   $\frac{1}{2}$   $> \frac{1}{2}$

p =  $b \frac{1}{2} \frac{1}{4} \frac{1}{4} \frac{1}{2}$   $b \frac{1}{2} \frac{1}{4} \frac{1}{4} \frac{1}{2}$   $> b \frac{1}{2} \frac{1}{4} \frac{1}{4} \frac{1}{2}$

$\frac{1}{2} \frac{1}{4} \frac{1}{4}$   $\frac{1}{2} \frac{1}{4} \frac{1}{4}$   $\frac{1}{2}$



Solo Violine (expressionato) frei

6 <sup>sub(b)</sup> <sup>b</sup> <sup>∞</sup>

> rit + dim

Fine

Subite (oder leidenschaftlich) —  
 (wie im Choral!) —

(A)

Handwritten musical score for section A, featuring five staves. The notation includes complex rhythmic patterns, slurs, and dynamics. A figured bass line is present at the bottom of the system.

(B)

Handwritten musical score for section B, featuring five staves. The notation includes complex rhythmic patterns, slurs, and dynamics. A figured bass line is present at the bottom of the system.

Schwanz (A)



Presto →

(3)

Handwritten musical score for the first system, featuring five staves. The top staff is a treble clef with a key signature of one sharp (F#) and a 3/4 time signature. The second and third staves are bass clefs, also with a key signature of one sharp. The fourth staff is a treble clef with a key signature of one sharp. The fifth staff is a bass clef with a key signature of one sharp. The music consists of dense rhythmic patterns, primarily eighth and sixteenth notes, with some rests. Dynamic markings include *mf* and *pp*. There are also some handwritten annotations like '81' and 'C'.

Adagio (rit + dim)

(4)

Handwritten musical score for the second system, featuring five staves. The top staff is a treble clef with a key signature of one sharp. The second and third staves are bass clefs, also with a key signature of one sharp. The fourth staff is a treble clef with a key signature of one sharp. The fifth staff is a bass clef with a key signature of one sharp. The music consists of melodic lines with slurs, accents, and dynamic markings like *p*, *pp*, and *ppp*. There are also some handwritten annotations like 'VIBR.', 'Pedal', and 'D.C. al Fine'. The bottom staff has a circled 'fff' marking.



Presto

(No. 3) Satz 3

1

Handwritten musical score for the first system, measures 1-4. The score is written in treble clef and includes a grand staff with piano (p) and bass (b) staves, and a separate bass line. The music features various notes, rests, and dynamic markings such as *pp* and accents (^). The first measure contains a complex rhythmic pattern with accents on several notes. The second and third measures are mostly rests with some notes in the piano and bass staves. The fourth measure continues the piano and bass parts.

2

Handwritten musical score for the second system, measures 5-8. The score continues the grand staff and bass line from the first system. It includes dynamic markings such as *p* and *f*. The fifth measure has a piano part with a fermata. The sixth and seventh measures show a change in dynamics to *f* in the piano and bass parts. The eighth measure concludes with a fermata in the piano part and a final note in the bass line.

Handwritten musical score for measures 13-16. The score includes staves for Flute, Clarinet, Bassoon, Oboe, and Xylophone. Measure 13 shows a complex chordal texture with various accidentals. Measure 14 has a similar texture with some notes marked with accents. Measure 15 continues the texture with more complex chordal structures. Measure 16 shows a more rhythmic texture with eighth notes and accents.

Handwritten musical score for measures 17-20. The score includes staves for Flute, Clarinet, Bassoon, Oboe, and Xylophone. Measure 17 features a melodic line in the Oboe with a slur and various accidentals. Measure 18 continues the melodic line with a slur. Measure 19 shows a more complex texture with multiple staves. Measure 20 concludes the section with a final chordal structure.

(sehr Solo!)

Handwritten musical score for measures 5-8. The score is for a solo instrument, likely a flute, with piano accompaniment. Measure 5 is circled with a '5'. The piano part includes a circled 'p' and a circled '4' with 'pizz' written below it. The notation includes various notes, rests, and dynamic markings like 'p' and 'b m'.

Handwritten musical score for measures 9-12. The score continues from the previous system. Measure 9 is circled with a '6'. The notation includes various notes, rests, and dynamic markings like 'f' and 'b'.



Handwritten musical score for the first system, measures 1-4. The system includes staves for Violin I, Violin II, Viola, and Cello/Double Bass. The music is in G major (one sharp) and 3/4 time. Measure 1 features a treble clef with a key signature change to G major and a 3/4 time signature. The first staff has a melodic line with slurs and accents. The second staff has a similar melodic line. The third staff has a bass line with slurs and accents. The fourth staff has a bass line with slurs and accents. The system ends with a circled number 7.

Handwritten musical score for the second system, measures 5-8. The system includes staves for Violin I, Violin II, Viola, and Cello/Double Bass. The music is in G major (one sharp) and 3/4 time. Measure 5 features a treble clef with a key signature change to G major and a 3/4 time signature. The first staff has a melodic line with slurs and accents. The second staff has a melodic line with slurs and accents, with the instruction "unisono" written below it. The third staff has a bass line with slurs and accents, with the instruction "(arco)" written below it. The fourth staff has a bass line with slurs and accents. The system ends with a circled number 8.

Handwritten musical score for measures 9-10. The score is written for Violin, Cello, and Pedal.

**Violin (Solo Violine):** Treble clef, key signature of one sharp (F#). Measure 9 contains a series of chords with accents. Measure 10 contains a melodic line with a slur and an 8-measure rest.

**Cello (Solo Cello):** Bass clef. Measure 9 contains a series of chords with accents. Measure 10 contains a melodic line with a slur and an 8-measure rest.

**Pedal:** Treble clef. Measure 9 contains a series of chords with accents. Measure 10 contains a melodic line with a slur and an 8-measure rest.

Measure numbers 9 and 10 are circled at the end of each system.

Handwritten musical score for measures 11-12. The score is written for Violin, Cello, and Pedal.

**Violin (alle):** Treble clef, key signature of one sharp (F#). Measure 11 contains a series of chords with accents. Measure 12 contains a melodic line with a slur and an 8-measure rest.

**Cello (C+B) alle (nur Celli):** Bass clef. Measure 11 contains a series of chords with accents. Measure 12 contains a melodic line with a slur and an 8-measure rest.

**Pedal (XYLOM.):** Treble clef, key signature of one sharp (F#). Measure 11 contains a series of chords with accents. Measure 12 contains a melodic line with a slur and an 8-measure rest.

Measure numbers 11 and 12 are circled at the end of each system.

10

pp = in Tempo bleiben (Solovioline !!)

pp =

pp =

pp =

Vibraphon

pp =

pp

CTB

pp

CTB

pp

CTB

Pedal aus



Solo Violine

Vibr.

12

13

14

15

Pedal

Pedal aus

Handwritten musical score for measures 16 and 17. The score is written on five staves: Violin I, Violin II, Viola, Cello, and Double Bass. Measure 16 features a melodic line in the Violin I part with a fermata, while the other parts play rhythmic accompaniment. Measure 17 continues the accompaniment with some melodic movement in the lower strings. A circled '16' is in the top right corner.

Handwritten musical score for measures 17 and 18. The score continues on the same five staves. Measure 17 shows the Violin I part with a melodic line and a fermata. Measure 18 features a more active Violin I part with a melodic line and a fermata, while the other parts continue their accompaniment. A circled '17' is in the top right corner.

Handwritten musical score for measures 17-18. The score is written on five staves: Treble clef (top), Violin I, Violin II, Cello/Double Bass, and Bass clef (bottom). Measure 18 is circled in the top right. A circled '114' is in the bottom left. The music features complex rhythmic patterns and melodic lines with accents.

Handwritten musical score for measures 19-20. The score is written on five staves: Treble clef (top), Violin I, Violin II, Cello/Double Bass, and Bass clef (bottom). Measure 19 is circled in the top right. A circled '115' is in the bottom left. The music continues with complex rhythmic patterns and melodic lines. At the end of the page, there is a circled treble clef symbol and the word 'CODA' written below it.



19 (poco rit....) 20

Handwritten musical score for measures 19 and 20. The score includes a vocal line and piano accompaniment. The vocal line in measure 19 has notes  $F\#$ ,  $F\#$ ,  $F\#$ ,  $G$ ,  $G$ . The piano accompaniment in measure 19 has notes  $Bb$ ,  $Bb$ ,  $Bb$  in the treble and  $Bb$ ,  $G$ ,  $G$ ,  $G$  in the bass. In measure 20, the vocal line has the word "dun" and the piano accompaniment has notes  $Bb$ ,  $Bb$ ,  $Bb$ . Dynamics include  $p$  and  $poco\ rit$ .

wesentlich  
geringer (rit....) 21

Handwritten musical score for measures 21 and 22. The score includes a vocal line and piano accompaniment. The vocal line in measure 21 has a whole rest. The piano accompaniment in measure 21 has notes  $G$ ,  $G$ ,  $G$  in the treble and  $G$ ,  $G$ ,  $G$  in the bass. In measure 22, the vocal line has a whole rest and the piano accompaniment has notes  $G$ ,  $G$ ,  $G$  in the treble and  $G$ ,  $G$ ,  $G$  in the bass. Dynamics include  $pp$  and  $mf$ .

Schubert - frei -

22

Handwritten musical score for page 22. The score consists of five staves. The top staff is in treble clef and contains notes with dynamic markings like *p* and *pp*, and phrasing slurs. The second staff is in alto clef. The third and fourth staves are in bass clef. The bottom staff is a double bass line with rhythmic markings. The page number '22' is circled in the top right corner.

(poco rit)

23

Handwritten musical score for page 23. The score consists of five staves. The top staff is in treble clef and contains notes with dynamic markings like *f* and *ff*, and phrasing slurs. The second staff is in alto clef. The third and fourth staves are in bass clef. The bottom staff is a double bass line with rhythmic markings. The page number '23' is circled in the top right corner.

27

sehr breit (approximativ)  
subito -

24

Handwritten musical score for the first system, measures 23-26. It includes staves for Flute (Fl), Clarinet (Cl), Bassoon (Fg), Violin (V), Viola (Vc), and Cello/Double Bass (Cb). The notation is dense with notes, slurs, and dynamic markings like 'p' and 'f'.

gr. seit... [25]

Handwritten musical score for the second system, measures 27-30. It includes staves for Flute (Fl), Clarinet (Cl), Bassoon (Fg), Violin (V), Viola (Vc), and Cello/Double Bass (Cb). The notation continues with notes, slurs, and dynamic markings. A circled '28' is written above the bass line.

Pedal on



freies Violin Solo ... Lento

sub G

Handwritten musical notation for the first system, featuring a treble clef, a key signature of one sharp (F#), and a melodic line with various dynamics and phrasing marks.

Handwritten musical notation for the second system, continuing the melodic line with a fermata and dynamic markings.

Handwritten musical notation for the third system, ending with a double bar line and a circled measure number 26. Includes the handwritten text "gut - dein" and a circled 'p'.

Handwritten musical notation for the fourth system, labeled "Vibraphon (Lento)". It consists of two staves: the upper staff has a treble clef and the lower staff has a bass clef. Includes the instruction "LP = Pedal" and "Schlag.".

Handwritten musical notation for the fifth system, continuing the vibraphone part with various dynamics and phrasing marks.

Handwritten musical notation for the sixth system, ending with a double bar line and a circled measure number 29. Includes the instruction "Lunga" and a circled "p.c.".

⊕ CODA (heftig -)

(A)

Handwritten musical score for the first system of the CODA section, marked "heftig". The score is written for five staves: Violin I, Violin II, Viola, Cello/Double Bass, and Double Bass. The key signature is one flat (B-flat major or D minor). The first measure of the Violin I part is marked "mf" and has a dynamic marking "ffp =". The first measure of the Violin II part is marked "ffp =". The first measure of the Viola part is marked "ffp =". The first measure of the Cello/Double Bass part is marked "ffp =". The first measure of the Double Bass part is marked "pp". The score consists of three measures. The first measure is marked with a fermata. The second measure is marked with a fermata. The third measure is marked with a fermata. The section ends with a circled letter "A".

Handwritten musical score for the second system of the CODA section. The score is written for five staves: Violin I, Violin II, Viola, Cello/Double Bass, and Double Bass. The key signature is one flat (B-flat major or D minor). The first measure of the Violin I part is marked with a circled "f" and a dynamic marking "f =". The first measure of the Violin II part is marked "mf =". The first measure of the Viola part is marked "f =". The first measure of the Cello/Double Bass part is marked "f =". The first measure of the Double Bass part is marked "f". The score consists of three measures. The first measure is marked with a fermata. The second measure is marked with a fermata. The third measure is marked with a fermata. The section ends with a circled letter "B".





Handwritten musical score for five staves. The top staff contains a series of chords and rests. The other four staves (Violin I, Violin II, Viola, and Cello/Double Bass) contain melodic lines with various dynamics and articulations. A circled 'E' is at the end of the system.

Handwritten musical score for five staves, starting with the instruction "(frei nicht im Tempo)". The first staff is labeled "Violoncello" and includes dynamics like "pp", "mf", and "Lento". The second staff is labeled "Violin I" and includes dynamics like "mf" and "Lento". The third and fourth staves are labeled "Violin II" and "Viola" respectively. The fifth staff is labeled "Vcllo" and includes dynamics like "pp", "mf", and "Lento". A circled 'F' is at the end of the system. The score includes various musical notations such as notes, rests, and dynamic markings.