

MUSIK

Small text
unreadable

2tes Trio für
Piano (+ Flöte)
Baß
Schlagwerke (2 Teile)



Trio für Piano
(und Flöte Solo)

Baß

Schlagzeug

(2 Teile)

Jedolf Scherbaum

Waltz (1) 3/4 Takt

1.

1

Handwritten musical score for a waltz, consisting of three systems of staves:

- System 1:**
 - Violin I (Vcl. I):** Labeled "Vcl. I". The staff contains a treble clef, a key signature of one sharp (F#), and a 3/4 time signature. It features a large, stylized flourish in the first measure.
 - Violin II (Vcl. II):** Labeled "Vcl. II". The staff contains a treble clef, a key signature of one sharp (F#), and a 3/4 time signature. It features a large, stylized flourish in the first measure.
 - Viola:** Labeled "Viola". The staff contains a alto clef, a key signature of one sharp (F#), and a 3/4 time signature. It features a large, stylized flourish in the first measure.
 - Cello/Double Bass (Vcl. C/B):** Labeled "Vcl. C/B". The staff contains a bass clef, a key signature of one sharp (F#), and a 3/4 time signature. It features a large, stylized flourish in the first measure.
- System 2:**
 - Violin I (Vcl. I):** Labeled "Vcl. I". The staff contains a treble clef, a key signature of one sharp (F#), and a 3/4 time signature. It features a large, stylized flourish in the first measure.
 - Violin II (Vcl. II):** Labeled "Vcl. II". The staff contains a treble clef, a key signature of one sharp (F#), and a 3/4 time signature. It features a large, stylized flourish in the first measure.
 - Viola:** Labeled "Viola". The staff contains an alto clef, a key signature of one sharp (F#), and a 3/4 time signature. It features a large, stylized flourish in the first measure.
 - Cello/Double Bass (Vcl. C/B):** Labeled "Vcl. C/B". The staff contains a bass clef, a key signature of one sharp (F#), and a 3/4 time signature. It features a large, stylized flourish in the first measure.
- System 3:**
 - Violin I (Vcl. I):** Labeled "Vcl. I". The staff contains a treble clef, a key signature of one sharp (F#), and a 3/4 time signature. It features a large, stylized flourish in the first measure.
 - Violin II (Vcl. II):** Labeled "Vcl. II". The staff contains a treble clef, a key signature of one sharp (F#), and a 3/4 time signature. It features a large, stylized flourish in the first measure.
 - Viola:** Labeled "Viola". The staff contains an alto clef, a key signature of one sharp (F#), and a 3/4 time signature. It features a large, stylized flourish in the first measure.
 - Cello/Double Bass (Vcl. C/B):** Labeled "Vcl. C/B". The staff contains a bass clef, a key signature of one sharp (F#), and a 3/4 time signature. It features a large, stylized flourish in the first measure.

The score includes various musical notations such as notes, rests, and dynamic markings. There are circled numbers 1, 2, and 3 indicating specific measures or sections. The handwriting is in black ink on a white background.

3

Handwritten musical score for measures 3 and 4. Measure 3 features a complex rhythmic pattern with eighth and sixteenth notes in the upper voice, and chords in the lower voice. Measure 4 continues with similar patterns and includes a triplet in the upper voice.

4

Handwritten musical score for measures 5 and 6. Measure 5 shows a continuation of the rhythmic patterns from the previous measures. Measure 6 features a large dynamic change, with 'f' and 'p' markings, and a fermata over the final notes.

6

Handwritten musical score for the first system, consisting of three staves. The notation includes various notes, rests, and dynamic markings such as *p* and *f*. A circled number 7 is located in the top right corner. The music features complex rhythmic patterns and articulation marks.

Handwritten musical score for the second system, consisting of three staves. The notation includes notes, rests, and dynamic markings such as *f* and *p*. A circled number 8 is located in the top right corner. The word "din" is written in the second measure of the top staff. A large handwritten number "58" is written vertically on the left side of the page. The system concludes with a double bar line and a circled number 9.

⑨ Solo (pizz | Polo!) ⑩

Bass

Drums

1 of Becken

p *f*

4/8 ⑪

⑫

Handwritten musical score for measures 13 and 14. The score consists of two staves. The upper staff is in treble clef with a key signature of one sharp (F#). It contains four measures of music with various notes, rests, and dynamic markings like 'f' and '>'. The lower staff is in bass clef and contains four measures of music with notes, rests, and dynamic markings like 'f' and '>'. A circled number '13' is in the top right corner.

Handwritten musical score for measures 15 and 16. The score consists of two staves. The upper staff is in treble clef with a key signature of one sharp (F#). It contains four measures of music with various notes, rests, and dynamic markings like 'p', 'f', and '>'. The lower staff is in bass clef and contains four measures of music with notes, rests, and dynamic markings like 'p', 'f', and '>'. A circled number '15' is in the top right corner.

PIANO

Bass Schlag

Handwritten musical score for measures 1-4. The piano part (top two staves) features a 3/4 time signature and a key signature of one sharp (F#). The bass drum part (bottom two staves) shows a rhythmic pattern of eighth notes in the first two measures, followed by quarter notes in the last two measures. The piano part includes various ornaments like accents and slurs, and some complex chordal textures in the later measures.

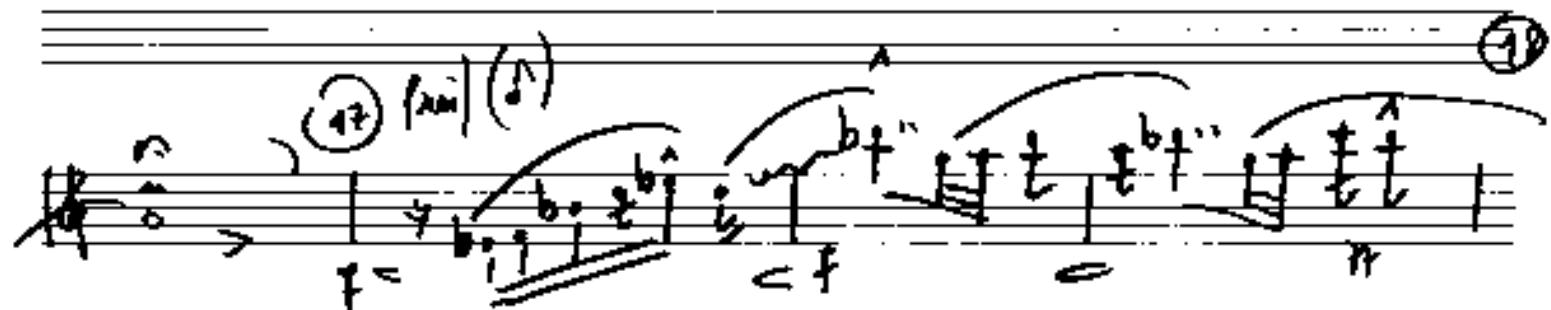
4/8

Scrum 43.500

Handwritten musical score for measures 5-8. The piano part (top two staves) is mostly empty, with only a few notes in the final measure. The bass drum part (bottom two staves) shows a rhythmic pattern of eighth notes in the first measure, followed by quarter notes in the last two measures. The piano part includes various ornaments like accents and slurs, and some complex chordal textures in the later measures.

clan. ... rit. ...

gang frei) (Flöte Solo (mit Hallverstärker)



of
CODA

frei - (1)

Flöte
Solo

Geß

Schlagz.

21

rubato

rubato

22

pp

9

rubato

rubato

breit

Handwritten musical notation for measures 22 and 23. Measure 22 features a piano part with a wide interval and a violin part with a descending scale. Measure 23 shows a piano part with a wide interval and a violin part with a descending scale. The number 23 is circled.

rubato

Becken!

Handwritten musical notation for measures 24 and 25. Measure 24 features a piano part with a wide interval and a violin part with a descending scale. Measure 25 shows a piano part with a wide interval and a violin part with a descending scale. The number 25 is circled. The text "D.C. Teil" and "Schlags." are written on the right side.

D.C. Teil
Schlags.

♭ CODA

Handwritten musical score for Piano and Bass Solo. The score is written on two staves. The top staff is for the Piano and the bottom staff is for the Bass Solo. The key signature is one flat (B-flat) and the time signature is common time (C). The score begins with a dynamic marking of *p* (piano) and a *Pedal* instruction. The Piano part features a melodic line with a crescendo hairpin and a *rit.* (ritardando) marking. The Bass Solo part starts with a circled *p* and includes a *rubato* marking over a series of notes. The score concludes with a wavy line indicating the end of the piece.

Piano

Teil 2

①

Handwritten musical score for the first system, labeled "1". It features three staves: the top staff is for the right hand (RH) in treble clef, the middle staff is for the left hand (LB) in bass clef, and the bottom staff is for the Schlegel (S) in bass clef. The RH part begins with a whole note chord, followed by a series of eighth notes with accents. The LB part consists of a steady eighth-note accompaniment. The S part is a rhythmic pattern of eighth notes. A circled "1" is in the top right corner.

②

Handwritten musical score for the second system, labeled "2". It features three staves: the top staff is for the right hand (RH) in treble clef, the middle staff is for the left hand (LB) in bass clef, and the bottom staff is for the Schlegel (S) in bass clef. The RH part has a melodic line with many accents and slurs. The LB part has a steady eighth-note accompaniment. The S part is a rhythmic pattern of eighth notes. A circled "2" is in the top right corner.

Handwritten musical notation for the first system, consisting of three staves. The top staff features a melodic line with various accidentals (sharps, naturals, flats) and accents (^). The middle staff contains chordal accompaniment with some notes and rests. The bottom staff shows a bass line with notes and rests. A circled number '3' is at the end of the system.

Handwritten musical notation for the second system, consisting of three staves. The top staff continues the melodic line with complex phrasing and many accidentals. The middle staff shows chordal accompaniment with some notes and rests. The bottom staff shows a bass line with notes and rests. A circled number '4' is at the end of the system.

4

5

6

Handwritten musical score for measures 4, 5, and 6. The score consists of three staves. The top staff is in treble clef, the middle and bottom staves are in bass clef. Measure 4 starts with a dynamic marking 'p' and contains notes G4, A4, B4, C5. Measure 5 also starts with 'p' and contains notes G4, A4, B4, C5. Measure 6 starts with 'p' and contains notes G4, A4, B4, C5. There are handwritten annotations like 'x' and 'y' in the treble staff.

4

8

9

Handwritten musical score for measures 4, 8, and 9. The score consists of three staves. The top staff is in treble clef, the middle and bottom staves are in bass clef. Measure 4 starts with a dynamic marking 'p' and contains notes G4, A4, B4, C5. Measure 8 starts with 'p' and contains notes G4, A4, B4, C5. Measure 9 starts with 'p' and contains notes G4, A4, B4, C5. There are handwritten annotations like 'x' and 'y' in the treble staff.

Handwritten musical score for system 10. The top staff is in treble clef and the bottom staff is in bass clef. Both staves contain rhythmic notation with various notes and rests. There are handwritten annotations above and below the staves, including the word "Bass" and various symbols.

Handwritten musical score for system 11. The top staff is in treble clef and the bottom staff is in bass clef. Both staves contain rhythmic notation with various notes and rests. There are handwritten annotations above and below the staves, including the word "Bass" and various symbols.

11

12

Handwritten musical score for measures 11 and 12. Measure 11 contains two staves with chords and a bass line. Measure 12 contains two staves with chords and a bass line. The notation includes notes, stems, and various markings like 'p.' and 'f=p.'

13

14

Handwritten musical score for measures 13 and 14. Measure 13 contains two staves with chords and a bass line. Measure 14 contains two staves with chords and a bass line. The notation includes notes, stems, and various markings like 'p.', 'f=p.', and 'ff'.

(14)

(Bass - Solo!)

(15)

Handwritten musical score for measures 14-15. The score consists of three staves. The top staff contains notes with accents and measure numbers 1 through 6 written above it. The middle staff contains rests. The bottom staff is labeled "Bass" and "Solo!" and contains dense chordal notation with many notes and accidentals. A circled measure number "15" is at the end of the system.

(16)

Handwritten musical score for measures 16-17. The score consists of three staves. The top staff contains notes with accents and measure numbers 1 through 6 written above it. The middle staff contains rests. The bottom staff contains dense chordal notation with many notes and accidentals. A circled measure number "16" is at the end of the system.

16

17

Handwritten musical score for measures 16 and 17. Measure 16 includes a "Solo" marking and a "Sobras" marking. The score features a treble clef with a key signature of one sharp (F#) and a common time signature. The bass line consists of whole notes. The treble line contains eighth and sixteenth notes with various ornaments and slurs.

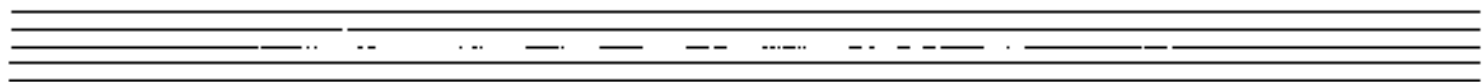
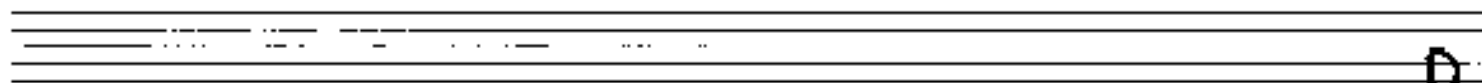
18

Handwritten musical score for measures 18 and 19. The score features a treble clef with a key signature of one sharp (F#) and a common time signature. The bass line consists of whole notes. The treble line contains eighth and sixteenth notes with various ornaments and slurs.

~~♩~~ CODA!

Schlagzeug-
Solo

4.



2. subito ff (f) brist

21

Handwritten musical score for two staves. The top staff is a treble clef with a 3/8 time signature. The bottom staff is a bass clef with a 3/8 time signature. The music consists of three measures. The first measure has a bass line with eighth notes and a treble line with a whole rest. The second measure has a bass line with eighth notes and a treble line with a whole rest. The third measure has a bass line with a whole note and a treble line with a whole note. There are various annotations including 'Bass', 'Schlag', 'ff', 'poco (rit)', and 'stren'.

Handwritten musical score for two staves. The top staff is a treble clef with a 3/8 time signature. The bottom staff is a bass clef with a 3/8 time signature. The music consists of several measures. The first measure has a bass line with eighth notes and a treble line with a whole rest. The second measure has a bass line with eighth notes and a treble line with a whole rest. The third measure has a bass line with eighth notes and a treble line with a whole rest. The fourth measure has a bass line with eighth notes and a treble line with a whole rest. The fifth measure has a bass line with eighth notes and a treble line with a whole rest. The sixth measure has a bass line with eighth notes and a treble line with a whole rest. The seventh measure has a bass line with eighth notes and a treble line with a whole rest. The eighth measure has a bass line with eighth notes and a treble line with a whole rest. There are various annotations including 'freies Bass Solo', 'ff', 'f', 'poco (rit)', and 'stren'.

Freies Bass-Solo

Handwritten musical notation for the first system of a bass solo. It features a single staff with a treble clef and a common time signature. The music consists of several measures of chords and triplets, with various accidentals (sharps, flats, naturals) and dynamic markings like p and f . There are also some slurs and accents over the notes.

Handwritten musical notation for the second system of a bass solo. It features a single staff with a treble clef and a common time signature. The music consists of several measures of chords and triplets, with various accidentals (sharps, flats, naturals) and dynamic markings like p . There are also some slurs and accents over the notes. A circled number 24 is written above the staff.

Handwritten musical notation for the third system of a bass solo. It features a single staff with a treble clef and a common time signature. The music consists of several measures of chords and triplets, with various accidentals (sharps, flats, naturals) and dynamic markings like f . There are also some slurs and accents over the notes. A circled number 25 is written below the staff.

Handwritten musical notation for the fourth system of a bass solo. It features a single staff with a treble clef and a common time signature. The music consists of several measures of chords and triplets, with various accidentals (sharps, flats, naturals) and dynamic markings like f and p . There are also some slurs and accents over the notes. A circled number 26 is written above the staff. The text "rit + dim" is written below the staff. The text "rubato" is written above the staff. The text "G.P." is written in a box at the end of the staff. A circled number 22 is written below the staff.

folgt (Flöten Solo aus Teil 1)

von 16 — 20 dann

fast attacca

weiter

Tempo 1 (Anfangstempo)

Piano

Solo

legg.

Pedal

27

Pedal

28

Pedal

29

29

30

31

Pedal *pp*

Bass

Schlag

32

33

Pedal out

25

33

34

Handwritten musical score for measures 33-34. The score is written on a grand staff with two systems. The upper system consists of a treble clef staff and a bass clef staff. The treble staff contains a series of vertical tick marks in the first measure, followed by rests and slurs in subsequent measures. The bass staff contains notes with stems and beams, including a triplet of eighth notes in the first measure. The word "Pedal" is written in the first measure of the bass staff. The lower system consists of a treble clef staff and a bass clef staff. The treble staff contains notes with stems and beams, including a triplet of eighth notes in the first measure. The bass staff contains notes with stems and beams, including a triplet of eighth notes in the first measure.

35

Handwritten musical score for measures 35-36. The score is written on a grand staff with two systems. The upper system consists of a treble clef staff and a bass clef staff. The treble staff contains a series of vertical tick marks in the first measure, followed by rests and slurs in subsequent measures. The bass staff contains notes with stems and beams, including a triplet of eighth notes in the first measure. The word "Pedal" is written in the first measure of the bass staff. The lower system consists of a treble clef staff and a bass clef staff. The treble staff contains notes with stems and beams, including a triplet of eighth notes in the first measure. The bass staff contains notes with stems and beams, including a triplet of eighth notes in the first measure.

35

36

Schlags Solo

37

D.C.
Teil
②
al f



7

Handwritten musical score for a string quartet, consisting of four staves:

- Staff 1 (Violin I):** Labeled "P" and "A". Contains a whole note chord marked "ff" (fortissimo) and a long horizontal line indicating a sustained note.
- Staff 2 (Violin II):** Labeled "P". Contains a whole note chord marked "ff" and a long horizontal line.
- Staff 3 (Viola):** Labeled "B" and "B". Contains a whole note chord marked "ff" and a long horizontal line.
- Staff 4 (Cello/Double Bass):** Labeled "Solo" and "ff". Contains a melodic line with slurs and accents. It includes a dynamic marking "dim" (diminuendo) with a hairpin symbol and a circled "P" (piano) at the end.

Handwritten musical notation for section B, consisting of two systems of staves. The notation includes notes, rests, and dynamic markings such as p and $p >$. The first system features a treble clef and a bass clef. The second system features a bass clef. A circled letter 'B' is located at the end of the first system.

Handwritten musical notation for section C, consisting of two systems of staves. The notation includes notes, rests, and dynamic markings such as p and $p >$. The first system features a treble clef and a bass clef. The second system features a bass clef. A circled letter 'C' is located at the end of the first system.

(D)

Handwritten musical score for section D. It features three staves: two treble clefs and one bass clef. The top two staves contain complex melodic lines with many slurs and ornaments. The bottom staff contains a bass line with rhythmic notation. The section ends with a double bar line and a fermata.

Handwritten musical notation for section D, including treble clefs, bass clef, notes, slurs, and a double bar line.

Handwritten musical notation below the staves for section D, including rhythmic notation and a double bar line.

(F)

Handwritten musical score for section F. It features three staves: two treble clefs and one bass clef. The top two staves contain long, sweeping melodic lines. The bottom staff contains a bass line with rhythmic notation. The section ends with a double bar line and a fermata.

Handwritten musical notation for section F, including treble clefs, bass clef, notes, slurs, and a double bar line.

Handwritten musical notation below the staves for section F, including rhythmic notation and a double bar line.

frei/loose

rubato

(Kleine)

G.P.

Pedal

frei/solo

Hoff Lorenz

ling

flautist Nr. 35

9