

MUSIK

16 Blatt, 6zeilig,
beidseitig bedruckt,
Artikel Nr. C822

Quartett No. 1,

Nach § 14, Abs. 2
des Urheberrechtsgesetzes
zur Verwendung
in öffentlichen Anlagen

Schubert Adolf



2

Teil 1

Quartett für

Piano

Baß

Schlagzeug

(dazu Saxophon) in C notiert
(klingend)

Adolf Scherbaum

Triana (Solo) gang frei

1 (Fantasia)

Handwritten musical notation for the first system of 'Triana (Solo) gang frei 1 (Fantasia)'. It features a grand staff with treble and bass clefs. The music is in 4/4 time and D major. The first measure contains a complex chordal texture with many notes and accidentals. The second measure continues this texture. A first ending bracket labeled '1' spans the end of the second measure.

Handwritten musical notation for the second system of 'Triana (Solo) gang frei 1 (Fantasia)'. It continues the grand staff from the first system. The music is in 4/4 time and D major. The first measure contains a complex chordal texture. The second measure continues this texture. The third measure contains a complex chordal texture. The fourth measure contains a complex chordal texture. A second ending bracket labeled '2' spans the end of the fourth measure. The word 'poco rit' is written below the first measure.

lento

Piano

Baß
Schlagz.

pizz

13

f

rit

rit

rit

rit

rit

rit

rit

rit

rit

rit

rit

rit

rit

rit

rit

rit

rit

rit

rit

rit

rit

rit

rit

rit

rit

rit

rit

rit

rit

rit

rit

rit

rit

rit

rit

rit

rit

rit

rit

rit

rit

rit

rit

rit

rit

rit

rit

rit

rit

rit

rit

rit

rit

rit

rit

rit

rit

rit

rit

rit

rit

rit

rit

rit

rit

rit

rit

rit

rit

rit

rit

rit

rit

rit

rit

rit

rit

rit

rit

rit

rit

rit

rit

rit

rit

rit

rit

rit

rit

rit

rit

rit

rit

rit

rit

rit

rit

rit

rit

rit

rit

rit

rit

rit

rit

rit

rit

rit

rit

rit

rit

rit

rit

rit

rit

rit

rit

rit

rit

rit

rit

rit

rit

rit

rit

rit

rit

rit

rit

rit

rit

rit

rit

rit

rit

rit

rit

rit

rit

rit

rit

rit

rit

rit

rit

rit

rit

rit

rit

rit

rit

rit

rit

rit

rit

rit

rit

rit

rit

rit

rit

rit

rit

rit

rit

rit

rit

rit

rit

rit

rit

rit

rit

rit

rit

rit

rit

rit

rit

rit

rit

rit

rit

rit

rit

rit

rit

rit

rit

rit

rit

rit

rit

rit

rit

rit

rit

rit

rit

rit

rit

rit

rit

rit

rit

rit

rit

rit

rit

rit

rit

rit

rit

rit

rit

rit

rit

rit

rit

rit

rit

rit

rit

rit

rit

rit

rit

rit

rit

rit

rit

rit

rit

rit

rit

rit

rit

rit

rit

rit

rit

rit

rit

rit

rit

rit

rit

rit

rit

rit

rit

rit

rit

rit

rit

rit

rit

rit

rit

rit

rit

rit

rit

rit

rit

rit

rit

rit

rit

rit

rit

rit

rit

rit

rit

rit

rit

rit

rit

rit

rit

rit

rit

rit

rit

rit

rit

rit

rit

rit

rit

rit

rit

rit

rit

rit

rit

rit

rit

rit

rit

rit

rit

rit

rit

rit

rit

rit

rit

rit

rit

rit

rit

rit

rit

rit

rit

rit

rit

rit

rit

rit

rit

rit

ruhig ($\frac{4}{4}$ Schreitend)

The image shows two systems of handwritten musical notation for a quartet. Each system consists of four staves: Violin I, Violin II, Viola, and Cello/Double Bass. The music is in 4/4 time and marked 'ruhig' (calm) and 'Schreitend' (marching). Measure 6 is circled with a '6' in the top right. Measure 7 is circled with a '7' in the top right. The notation includes various notes, rests, and dynamic markings such as 'p' (piano) and 'pp' (pianissimo). There are also some handwritten annotations and symbols, including a double bar line with a double equals sign at the start of the second system.

Handwritten musical score for measures 8 and 9. The score is written on four staves: Treble clef (top), Bass clef (second), Bass clef (third), and Treble clef (bottom). Measure 8 is circled at the end of the first system. The notation includes various notes, rests, and dynamic markings like 'p' and 'f'.

Handwritten musical score for measures 8 and 9. The score is written on four staves: Treble clef (top), Bass clef (second), Bass clef (third), and Treble clef (bottom). Measure 9 is circled at the end of the second system. The notation includes various notes, rests, and dynamic markings like 'p' and 'f'.

po. Steigerung!

The image shows a handwritten musical score for piano and bass, consisting of two systems of staves. The first system has four staves and ends with a circled '10'. The second system has four staves and ends with a circled '11'. The notation includes various musical symbols such as notes, rests, dynamics (f, ff), and articulation marks.

At the bottom of the page, there is a printed footer:

Anton Scherbaum, Concerto No. 1 für Piano, Bass, Schlagzeug und Saxophon, BWV 1000 (n.J.)
© 2010 Peter Adamiker-Scherbaum, Alle Rechte vorbehalten.

freies Solo (

P I A N O

Pedal

12

breit

13

pp. rit..

Lento

14

legg.

Handwritten musical score for measures 14-15. The score is written on four staves: Treble Clef (top), Bass Clef (second), Bass Clef (third), and Bass Clef (bottom). The top staff contains a melodic line with various ornaments and dynamics. The second staff contains a piano accompaniment with chords and a circled 'P' dynamic marking. The third and fourth staves are mostly empty, with some notes and a circled 'P' dynamic marking. The word 'legg.' is written above the top staff. The number '14' is circled in the top right corner.

==

15

Handwritten musical score for measures 16-18. The score is written on four staves: Treble Clef (top), Bass Clef (second), Bass Clef (third), and Bass Clef (bottom). The top staff contains a melodic line with various ornaments and dynamics. The second staff contains a piano accompaniment with chords and a circled 'P' dynamic marking. The third and fourth staves contain a bass line with various ornaments and dynamics. The word 'legg.' is written above the top staff. The number '15' is circled in the top right corner.

Schlagz-tacet

paus frei

15

16

Handwritten musical score for measures 15 and 16. The score is written on three staves. The top two staves are for piano, and the bottom staff is for Bass Solo. Measure 15 contains a piano (*p*) dynamic marking and a 3-measure rest in the piano staves. The Bass Solo part features a triplet of eighth notes with a forte (*f*) dynamic marking. Measure 16 contains a piano (*p*) dynamic marking and rests in all staves.

Bass Solo

Handwritten musical score for Bass Solo, measures 17-20. The score is written on a single staff. The first measure starts with a forte (*f*) dynamic marking and includes the instruction "accel. + cresc." with an arrow pointing right. The second measure has a forte (*f*) dynamic marking. The third measure has a piano (*p*) dynamic marking. The fourth measure has a piano (*p*) dynamic marking. The score ends with a circled measure number 17.

rasch *nn*

f < *accel.* <

18 19

(frei) rubato

20

21

22

23

p >

rit + dim

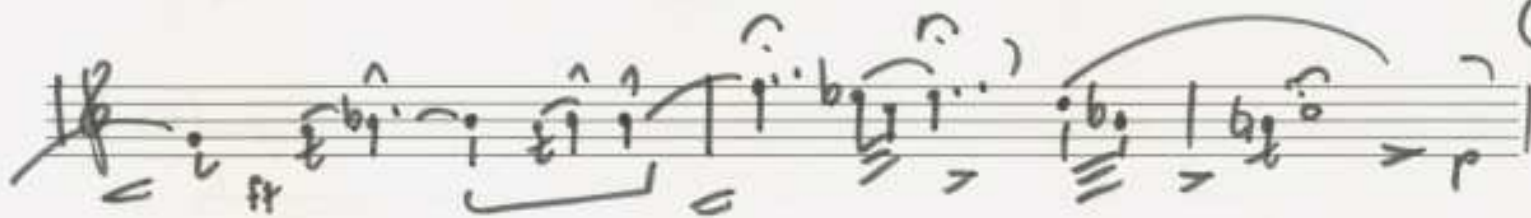
Solo (Saxophon) Sopran (in C) nicht

(24)

ganz frei



(25)



(26)



frei

passion

27

(12)

28

29

gut + ohn ...

29 bewegt / ruhige $\frac{4}{4}$

(ad. lib. / Rechte Hand! ...
Sex Solo

30

Handwritten musical score for measures 29-30. The score is written on three staves. The top staff has a treble clef and a 'P-A-20' label. The middle staff has a bass clef. The bottom staff has a bass clef. The music includes various notes, rests, and dynamic markings like 'p' and 'f'. A large bracket spans across the top two staves from the beginning of measure 29 to the end of measure 30.

31

Handwritten musical score for measures 31-32. The score is written on three staves. The top staff has a treble clef. The middle staff has a bass clef. The bottom staff has a bass clef. The music includes various notes, rests, and dynamic markings like 'f'. A large bracket spans across the top two staves from the beginning of measure 31 to the end of measure 32.

32

Handwritten musical score for measures 32-33. The score is written on three staves: Treble, Bass, and Cymbal/Drum. Measure 32 features a melodic line in the Treble staff with a slur and a 'p' dynamic marking. The Bass staff has a 'p' dynamic and a 'rit.' marking. The Cymbal/Drum staff has a 'p' dynamic and a 'rit.' marking. Measure 33 continues the melodic line in the Treble staff with a slur and a 'p' dynamic marking. The Bass staff has a 'p' dynamic and a 'rit.' marking. The Cymbal/Drum staff has a 'p' dynamic and a 'rit.' marking.

33

Handwritten musical score for measures 34-35. The score is written on three staves: Treble, Bass, and Cymbal/Drum. Measure 34 features a melodic line in the Treble staff with a slur and a 'p' dynamic marking. The Bass staff has a 'p' dynamic and a 'rit.' marking. The Cymbal/Drum staff has a 'p' dynamic and a 'rit.' marking. Measure 35 continues the melodic line in the Treble staff with a slur and a 'p' dynamic marking. The Bass staff has a 'p' dynamic and a 'rit.' marking. The Cymbal/Drum staff has a 'p' dynamic and a 'rit.' marking.

39

Sax

Piano

Bass

Schlagzeug

Block (A)

Block = Piano

Bass
Schlagzeug (2 Takte)

Sax Solo

Handwritten musical notation for Saxophone Solo, first system. The notation is on a single staff with a treble clef and a common time signature. It consists of two measures. The first measure is marked with a piano 'p' dynamic and contains a series of eighth notes. The second measure is marked with a forte 'f' dynamic and contains a series of eighth notes with a slur over them. Below the staff, the first measure is bracketed and labeled 'p Block (A)' and the second measure is bracketed and labeled 'Block (A)'. There are also some handwritten annotations above the notes, including a 'b' and a 'b' with a dot, and a 'b' with a dot and a 'b' with a dot.

Handwritten musical notation for Saxophone Solo, second system. The notation is on a single staff with a treble clef and a common time signature. It consists of two measures. The first measure is marked with a piano 'p' dynamic and contains a series of eighth notes. The second measure is marked with a forte 'f' dynamic and contains a series of eighth notes with a slur over them. Below the staff, the first measure is bracketed and labeled 'Block (A)' and the second measure is bracketed and labeled 'Block (A)'. There are also some handwritten annotations above the notes, including a 'b' with a dot and a 'b' with a dot.

Sax + Job

Block A

Block A

Sax

frei

Piano

Bass

Schlagzeug

Teil 2

sehr rasch

2

1

Piano

Bass

Schlagzeug

ppp

2

3

p

f

③

Handwritten musical score for system 3, measures 1-4. The notation includes notes, rests, and accidentals in both treble and bass clefs. A circled '5' is positioned above the first measure of the piano part.

⑤

Handwritten musical score for system 4, measures 5-8. The piano part is mostly rests. The bass clef staff contains notes and stems. A circled '6' is at the end of the system, and a circled 'P' is at the bottom right.

⑥

Handwritten musical score for measures 6 and 7. The score is written on three staves: Treble Clef (top), Bass Clef (middle), and Bass Clef (bottom). Measure 6 contains a complex melodic line in the treble with many slurs and accents, and a bass line with notes and rests. Measure 7 continues the melodic line and includes a circled '7' at the end. Dynamics include 'p=' and 'f='.

Handwritten musical score for measures 8 and 9. The score is written on three staves: Treble Clef (top), Bass Clef (middle), and Bass Clef (bottom). Measure 8 contains a melodic line in the treble with slurs and accents, and a bass line with notes and rests. Measure 9 continues the melodic line and includes a circled '8' at the end. Dynamics include 'f='.

Handwritten musical score for measures 8 and 9. The score is written on three staves: a grand staff (treble and bass clefs) and a separate bass staff. Measure 8 contains a complex chordal structure with many accidentals (flats and naturals) and slurs. Measure 9 continues this structure with some notes marked with accents. The bottom staff shows rhythmic patterns with stems and beams.

Handwritten musical score for measures 10 and 11. Measure 10 features a grand staff with complex chordal structures and slurs, and a bass staff with rhythmic patterns. Measure 11 shows a continuation of the musical ideas with some notes marked with accents. The bottom staff has some notes with stems and beams.

Handwritten musical score for measures 11-12, system 1. It features four staves: two treble clefs and two bass clefs. The bottom staff contains rhythmic notation with stems and beams, and dynamic markings like 'f' and '>'. The top three staves have vertical lines indicating notes or rests. A circled '11' is at the end of the system.

Handwritten musical score for measures 11-12, system 2. It features four staves: two treble clefs and two bass clefs. The bottom staff contains rhythmic notation with stems and beams, and dynamic markings like 'p' and '>'. The top three staves contain notes with stems and beams. A circled '12' is at the end of the system. Below the staves, the text "Block (B)" is written.

Sax Solo

Handwritten musical notation for saxophone solo, measure 13. The staff shows a melodic line with various ornaments and dynamics. A 'Block B' bracket spans the second and third measures. The measure number '13' is circled in the top right.

Handwritten musical notation for saxophone solo, measure 14. The staff shows a melodic line with various ornaments and dynamics. A 'Block B' bracket spans the second and third measures. The measure number '14' is circled in the top right.

Polo

Block B

15

Block B

16

Block B

17

Handwritten musical score for a quartet. The score is divided into four staves: Sax, Piano (P-ANO), Bass, and Schlagzeug (Drum). Above the staves, there are handwritten notes: ϕ , ϕ , ϕ , ϕ , and a circled number 18. The Piano part includes a section labeled "Fiss." with a large, sweeping line. The Drum part shows rhythmic patterns with vertical lines and dots. The score concludes with a double bar line and a circled number 18.

Handwritten musical score for a solo drum part. The title is "Schlagz. Solo". The score consists of a single staff with rhythmic notation below it. The notation includes symbols like $\# >$, $1 \ 3 \ 3 \ 1$, $3 \ 1 \ 3 \ 3$, $1 \ 3 \ 3 \ 1$, $3 \ 1 \ 3 \ 3$, $1 \ 1 \ 3 \ 3$, and $1 \ 1 \ 3 \ 3$. A circled number 19 is written above the staff, and "D.C." is written to the right. The word "dein" is written below the staff. The score ends with a double bar line and a circled number 19.

PIANO

pp =

Bass

pp =

Schlagzeug

pp =

pp =

22

23

Handwritten musical score for measures 24 and 25. The score is written on four staves. The top staff is in treble clef, the second and third staves are in bass clef, and the bottom staff is in bass clef. The music features various notes, rests, and dynamic markings. A circled number '24' is in the top right corner.

Handwritten musical score for measures 24 and 25. The score is written on four staves. The top staff is in treble clef, the second and third staves are in bass clef, and the bottom staff is in bass clef. The music features various notes, rests, and dynamic markings. A circled number '25' is in the top right corner.

26

Handwritten musical score for measures 26-29, system 1. It features a grand staff with treble and bass clefs, a piano part with a key signature of one sharp (F#) and a 7/8 time signature, and a solo section for the saxophone. The piano part includes chords and rhythmic notation. The saxophone part is marked 'Solo' and contains melodic lines with various ornaments and dynamics.

Handwritten musical score for measures 27-29, system 2. This system continues the piano and saxophone parts from the previous system. It includes a key signature change to two sharps (F# and C#) and a 4/4 time signature. The piano part has a bass line with chords and rests. The saxophone part has melodic lines with slurs and accents. Measure 27 is circled.

frei) robato

fat

♩ =

30

31

Baß Solo

f = accel. + cresc. →

KRASCH

f =

accel. <

rubato
Sehr
rasch

gut + dein

> >

p =

>

♩ CODA

Handwritten musical score for SAT, PIANO, BOß, and Schlagzeug. The score is written on five staves. The SAT staff has a treble clef and a key signature of one sharp (F#). The PIANO staff has a grand staff with treble and bass clefs. The BOß staff has a bass clef. The Schlagzeug staff has a single line with a treble clef. The score includes various musical notations such as notes, rests, dynamics (ff), and articulation marks (accents, slurs). There are circled letters 'A' and 'B' above the SAT staff. The piece concludes with a CODA symbol.

Scherzhaft — mehr steigern →

Handwritten musical score for a quartet. The score is written on five staves. The top staff has a treble clef and a key signature of one sharp (F#). The second staff has a bass clef and a key signature of one sharp. The third staff has a bass clef and a key signature of one sharp. The fourth and fifth staves have treble clefs and a key signature of one sharp. The score is divided into two sections by a double bar line. The first section contains four measures of music. The second section is marked "freies Solo" and contains a melodic line with a key signature change to three sharps (F#, C#, G#) and a "Pedal" section. The score is signed "Adolf Scherbaum" at the bottom right.

Prestissimo

Adolf Scherbaum