

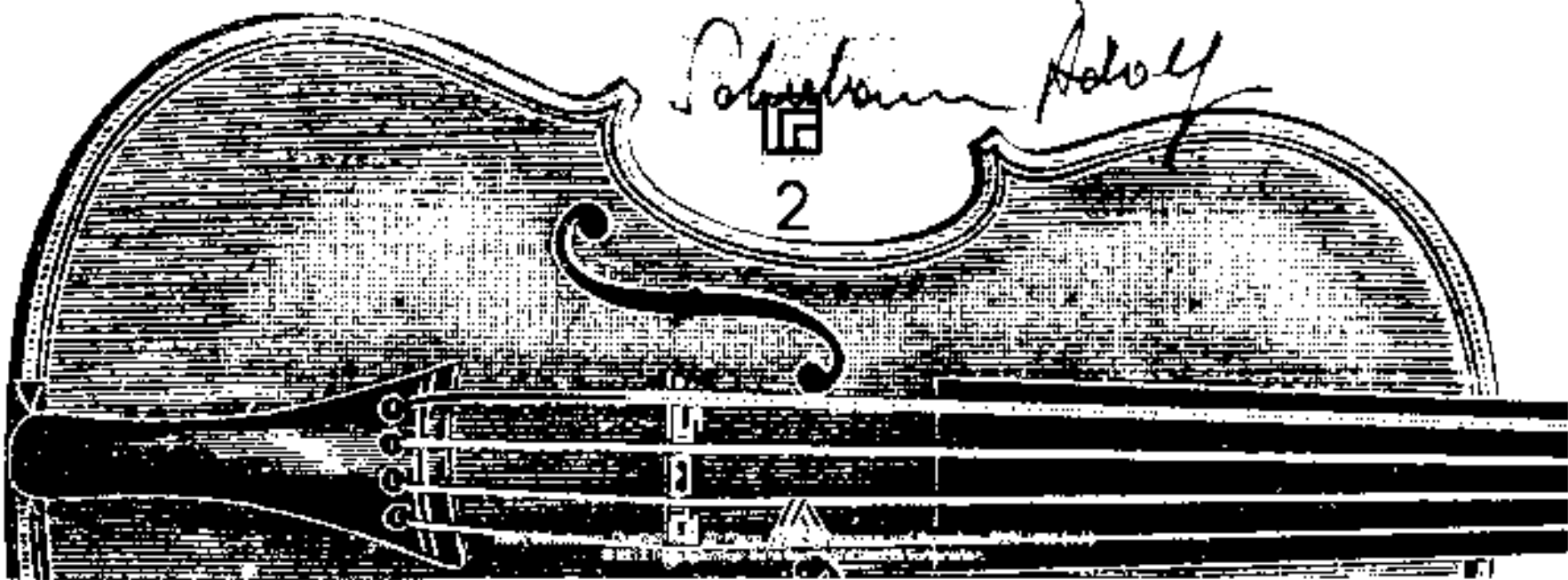
MUSIK

© 1951 by
G. Schirmer, Inc.
New York, N. Y.

Quartett No. 1,

Robert Schumann

2



Teil 1

Quartett für

Piano

Baß

Schlagzeug

(dazu Saxophon) im Cuckint
(Klingend)

Adolf Scherbaum

Piano Solo yang free

1 (Fantasia)

①

Handwritten musical notation for the first system of a piano solo. It features a treble clef, a key signature of one sharp (F#), and a 4/4 time signature. The melody is written in the upper voice with various ornaments and slurs. The bass line is mostly rests with some notes. A circled '1' is at the end of the system.

②

Handwritten musical notation for the second system of a piano solo. It features a treble clef, a key signature of one sharp (F#), and a 4/4 time signature. The melody continues with slurs and ornaments. The bass line has more notes, including some with "poco rit" written below. A circled "2" is at the end of the system.

poco rit

①

lento

Piano

Bass
schlag

3

4

Handwritten musical score for the first system, measures 1-4. The piano part consists of two staves with notes, slurs, and accents. Dynamics include *p* and *f*. The bass drum part is on a single staff with rhythmic notation and a *p* dynamic. A circled number '3' is written above the second measure.

f

Piano

Pedal

Ped.
out

5

Handwritten musical score for the second system, measures 5-8. The piano part consists of two staves with notes, slurs, and accents. Dynamics include *p* and *f*. The bass drum part is on a single staff with rhythmic notation and a *p* dynamic. A circled number '5' is written above the second measure. The word 'Piano' is written above the first measure, and 'Pedal' and 'Ped. out' are written below the piano part.

ruhig ($\frac{4}{4}$ Schreittempo)

The image shows two systems of handwritten musical notation. Each system consists of three staves: a vocal line (top), a piano accompaniment line (middle), and a bass line (bottom).
System 6 (top) is marked with a circled '6'. The vocal line begins with a rest, followed by a melodic phrase with notes and slurs. The piano accompaniment features chords and rhythmic patterns. The bass line has a simple rhythmic accompaniment. A circled '6' is at the end of the system.
System 7 (bottom) is marked with a circled '7'. The vocal line continues with a similar melodic structure. The piano accompaniment and bass line follow the same rhythmic and harmonic patterns as in system 6. A circled '7' is at the end of the system.

8

Handwritten musical score for measures 8-9. The system consists of three staves: a treble clef staff with a melodic line, a bass clef staff with a bass line, and a piano accompaniment staff with chords and rhythmic patterns. Measure 8 features a melodic phrase with a slur and a circled measure number '8'. Measure 9 continues the melodic line and includes a circled measure number '9' at the end of the system.

9

Handwritten musical score for measures 10-11. The system consists of three staves: a treble clef staff with a melodic line, a bass clef staff with a bass line, and a piano accompaniment staff with chords and rhythmic patterns. Measure 10 features a melodic phrase with a slur and a circled measure number '9' at the end of the system. Measure 11 continues the melodic line and includes a circled measure number '10' at the end of the system.

po. Steigerung!

10

Handwritten musical score for measures 10-11. The system consists of three staves: a treble clef staff with a key signature of one sharp (F#), a bass clef staff, and a common time signature. The treble staff contains a melodic line with slurs and accents, starting with a dynamic marking of $f =$. The bass staff contains a bass line with slurs and accents, starting with a dynamic marking of $f =$. The common time signature is C . The music is divided into four measures by vertical bar lines. Measure 10 ends with a circled measure number '10'.

11

Handwritten musical score for measures 12-13. The system consists of three staves: a treble clef staff with a key signature of one sharp (F#), a bass clef staff, and a common time signature. The treble staff contains a melodic line with slurs and accents, starting with a dynamic marking of $f =$. The bass staff contains a bass line with slurs and accents, starting with a dynamic marking of $f =$. The common time signature is C . The music is divided into four measures by vertical bar lines. Measure 12 ends with a circled measure number '11', and measure 13 ends with a circled measure number '12'.

freies Solo (

p
02A-20

Handwritten musical score for measures 12 and 13. Measure 12 features a piano solo with a treble clef staff containing chords and a bass clef staff with a pedal point. Measure 13 is a whole rest. A circled '12' is at the end of the first system.

breit

13

Handwritten musical score for measures 14, 15, 16, and 17. Measure 14 has a treble clef staff with chords and a bass clef staff with a pedal point. Measures 15-17 show a progression of chords in the treble staff and a descending line in the bass staff. A circled '13' is at the end of the system.

pr. rit. .

Canto

14

Bass
Schlagzeug

Handwritten musical score for measures 14-15. The top staff is for Canto, the middle for Bass, and the bottom for Schlagzeug. Measure 14 contains vocal notes with various ornaments and dynamics like 'p' and 'legg.'. Measure 15 continues the vocal line with a 'p' dynamic. The bass and drum parts are mostly rests with some notes in measure 15.

11

15

Bass Solo (frei)

Schlagzeug-tacet
frei

Handwritten musical score for measures 15-16. The top staff is Bass Solo (frei) with a 'p' dynamic and various ornaments. The middle staff is Schlagzeug-tacet (frei) with rests. The bottom staff is empty. Measure 15 has a long note with a slur. Measure 16 has a 'p' dynamic and various ornaments.

15

16

Handwritten musical score for measures 15 and 16. The score consists of three staves. The top two staves are for a string quartet, and the bottom staff is for Bass Solo. Measure 15 features a piano (*p*) dynamic and a triplet of eighth notes in the Bass Solo part. Measure 16 features a forte (*f*) dynamic and a triplet of eighth notes in the Bass Solo part. The notation includes various accidentals (flats and naturals) and slurs.

Bass Solo

17

Handwritten musical score for measure 17. The score consists of one staff for Bass Solo. The measure begins with a forte (*f*) dynamic and a tempo marking of "accel. + cresc.". The notation includes various accidentals (sharps, flats, and naturals) and slurs. The measure ends with a forte (*f*) dynamic and a tempo marking of "cresc.".

ritard. *ritard.*

p *ritard.* *ritard.*

18 19

(frei) rubato

p #

20

21

22

rit + dim *rit + dim* *p*

23

Solo (Saxophone) Sopran (in C-natur)

(24)

ganz frei



(25)



(26)

frei

27

28

(a)

29

30

güt + dinn ...

29 Bewepte (rubige $\frac{4}{4}$)

(ad. lib. Rechte Hand: ...
Sax Solo)

30

Handwritten musical score for measures 29 and 30. The score is written on three staves: a top staff with a treble clef, a middle staff with an alto clef, and a bottom staff with a bass clef. The time signature is 4/4. Measure 29 shows a saxophone solo with notes and rests. Measure 30 continues the solo with more notes and rests. There are various musical notations including slurs, accents, and dynamic markings like 'p' and 'f'. A circled number '29' is at the top left, and a circled number '30' is at the top right.

31

Handwritten musical score for measures 31 and 32. The score is written on three staves: a top staff with a treble clef, a middle staff with an alto clef, and a bottom staff with a bass clef. The time signature is 4/4. Measure 31 shows a saxophone solo with notes and rests. Measure 32 continues the solo with more notes and rests. There are various musical notations including slurs, accents, and dynamic markings like 'f'. A circled number '31' is at the top right.

Handwritten musical score for measures 31 and 32. Measure 31 (circled) contains a melodic line with a slur and a fermata, and a bass line with a bracketed section. Measure 32 (circled) continues the melodic line with a slur and a fermata, and the bass line. The page number 32 is circled at the top.

Handwritten musical score for measures 33 and 34. Measure 33 (circled) contains a melodic line with a slur and a fermata, and a bass line with a bracketed section. Measure 34 (circled) contains a melodic line with a slur and a fermata, and a bass line. The page number 33 is circled at the top.

Handwritten musical score for Saxophone, Piano, Bass, and Drums. The score is divided into two systems, each starting with a circled measure number: 39 and 40. The Saxophone part features melodic lines with accents and dynamic markings like *f*. The Piano part includes chords and melodic fragments. The Bass part shows a steady rhythmic pattern. The Drums part is indicated by rhythmic notation and dynamic markings.

Block (A)

Block = Piano
 Bass
 Schlagzeug (2 Takte)

Sax Solo

Handwritten musical notation for the first system. The top staff is in treble clef and contains a saxophone solo. The first measure has a dynamic marking of *p* and a breath mark. The second measure has a breath mark. The third measure has a dynamic marking of *f* and a breath mark. The fourth measure has a dynamic marking of *f* and a breath mark. The bottom staff is in bass clef and contains piano accompaniment, with the word "Block" and a circled letter "A" written below the staff. The system is enclosed in a large hand-drawn bracket.

Handwritten musical notation for the second system. The top staff is in treble clef and contains a saxophone solo. The first measure has a dynamic marking of *f* and a breath mark. The second measure has a dynamic marking of *f* and a breath mark. The third measure has a dynamic marking of *f* and a breath mark. The fourth measure has a dynamic marking of *f* and a breath mark. The bottom staff is in bass clef and contains piano accompaniment, with the word "Block" and a circled letter "A" written below the staff. The system is enclosed in a large hand-drawn bracket.

Pat + Job

Block A Block A

Pat

Block A Block A

Pat

Block A Block A

Pat

Block A Block A

Pat

Block A Block A

Pat

Block A Block A

Pat

Block A Block A

Pat

Block A Block A

Pat

Block A Block A

Pat

Block A Block A

Pat

Block A Block A

Pat

Block A Block A

Pat

Block A Block A

Pat

Block A Block A

Pat

Block A Block A

Pat

Block A Block A

Pat

Block A Block A

Pat

Block A Block A

Pat

Block A Block A

Pat

Block A Block A

Pat

Block A Block A

Pat

Block A Block A

Pat

Block A Block A

Pat

Block A Block A

Pat

Block A Block A

Pat

Block A Block A

Pat

Block A Block A

Pat

Block A Block A

Pat

Block A Block A

Pat

Block A Block A

Pat

Block A Block A

Pat

Block A Block A

Pat

Block A Block A

Pat

Block A Block A

Pat

Block A Block A

Pat

Block A Block A

Pat

Block A Block A

Pat

Block A Block A

Pat

Block A Block A

Pat

Block A Block A

Pat

Block A Block A

Pat

Block A Block A

Pat

Block A Block A

Pat

Block A Block A

Pat

Block A Block A

Pat

Block A Block A

Pat

Block A Block A

Pat

Block A Block A

Pat

Block A Block A

Pat

Block A Block A

Pat

Block A Block A

Pat

Block A Block A

Pat

Block A Block A

Pat

Block A Block A

Pat

Block A Block A

Pat

Block A Block A

Pat

Block A Block A

Pat

Block A Block A

Pat

Block A Block A

Pat

Block A Block A

Pat

Block A Block A

Pat

Block A Block A

Pat

Block A Block A

Pat

Block A Block A

Pat

Block A Block A

Pat

Block A Block A

Pat

Block A Block A

Pat

Block A Block A

Pat

Block A Block A

Pat

Block A Block A

Pat

Block A Block A

Pat

Block A Block A

Pat

Block A Block A

Pat

Block A Block A

Pat

Block A Block A

Pat

~~Tile~~ 2

Solo wassch

2

1

Piano

Bass

Solo gg

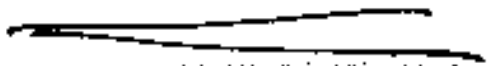
Handwritten musical notation for the first system, measures 1-5. The piano part consists of whole rests. The bass part features notes with accents and slurs. The solo guitar part includes rhythmic notation and some chord symbols.



2

3

Handwritten musical notation for the second system, measures 6-10. The piano part has notes with slurs and accents. The bass part has notes with slurs. The solo guitar part includes notes with slurs and accents, along with some chord symbols.



f

f

③

Handwritten musical score for system 3, measures 1-4. The notation includes a treble clef, a key signature of one sharp (F#), and a 2/4 time signature. The score features eighth and sixteenth notes with accents, chords, and a bass line with stems and flags. A circled number 3 is at the beginning.

⑤

Handwritten musical score for system 5, measures 1-4. The notation includes a treble clef, a key signature of one sharp (F#), and a 2/4 time signature. The score features chords, rests, and a bass line with stems and flags. A circled number 5 is at the beginning, and a circled 'P' is at the end.

⑥

Handwritten musical score for measures 6 and 7. The score is written on three staves: a treble clef staff (top), a bass clef staff (middle), and a piano staff (bottom). Measure 6 shows a melodic line with slurs and accents, a bass line with chords, and piano notation. Measure 7 continues the melody and bass line, ending with a circled measure number 7.

Handwritten musical score for measures 7 and 8. The score is written on three staves: a treble clef staff (top), a bass clef staff (middle), and a piano staff (bottom). Measure 7 continues the melodic and bass lines from the previous system. Measure 8 concludes the phrase with a circled measure number 8.

8

Handwritten musical notation for system 8, measures 8-10. The system consists of three staves. The top staff has a treble clef and a key signature of one sharp (F#). The middle and bottom staves have bass clefs and a key signature of one sharp (F#). Measure 8: Treble staff has a half note chord (Bb, D, F#) with an accent (>) and a slur. Bass staff has a half note chord (Bb, D, F#) with an accent (>) and a slur. Bottom staff has a half note chord (Bb, D, F#) with an accent (>) and a slur. Measure 9: Treble staff has a half note chord (Bb, D, F#) with an accent (>) and a slur. Bass staff has a half note chord (Bb, D, F#) with an accent (>) and a slur. Bottom staff has a half note chord (Bb, D, F#) with an accent (>) and a slur. Measure 10: Treble staff has a half note chord (Bb, D, F#) with an accent (>) and a slur. Bass staff has a half note chord (Bb, D, F#) with an accent (>) and a slur. Bottom staff has a half note chord (Bb, D, F#) with an accent (>) and a slur.

9

Handwritten musical notation for system 9, measures 11-13. The system consists of three staves. The top staff has a treble clef and a key signature of one sharp (F#). The middle and bottom staves have bass clefs and a key signature of one sharp (F#). Measure 11: Treble staff has a half note chord (Bb, D, F#) with an accent (>) and a slur. Bass staff has a half note chord (Bb, D, F#) with an accent (>) and a slur. Bottom staff has a half note chord (Bb, D, F#) with an accent (>) and a slur. Measure 12: Treble staff has a half note chord (Bb, D, F#) with an accent (>) and a slur. Bass staff has a half note chord (Bb, D, F#) with an accent (>) and a slur. Bottom staff has a half note chord (Bb, D, F#) with an accent (>) and a slur. Measure 13: Treble staff has a half note chord (Bb, D, F#) with an accent (>) and a slur. Bass staff has a half note chord (Bb, D, F#) with an accent (>) and a slur. Bottom staff has a half note chord (Bb, D, F#) with an accent (>) and a slur.

10

11

Handwritten musical score for measures 11-14. The score is written on a grand staff with treble and bass clefs. The bass line contains rhythmic notation with accents and slurs. The treble and alto staves have horizontal lines indicating fingerings or positions.

12

Handwritten musical score for measures 15-18. The score is written on a grand staff with treble and bass clefs. The bass line contains rhythmic notation with accents and slurs. The treble and alto staves contain notes and rests.

Block (B)

Sax Solo

Handwritten musical notation for measure 13. The staff is in treble clef with a key signature of one flat (B-flat). The notation includes a quarter rest, followed by a quarter note with an accent (^) and a slur. The second measure contains a quarter note with an accent (^) and a slur, followed by a quarter note with an accent (^) and a slur. The third measure contains a quarter note with an accent (^) and a slur, followed by a quarter note with an accent (^) and a slur. The fourth measure contains a quarter note with an accent (^) and a slur, followed by a quarter note with an accent (^) and a slur. The measure is circled with the number 13. The label "Block B" is written below the staff.

14

Handwritten musical notation for measure 14. The staff is in treble clef with a key signature of one flat (B-flat). The notation includes a quarter note with an accent (^) and a slur, followed by a quarter note with an accent (^) and a slur. The second measure contains a quarter note with an accent (^) and a slur, followed by a quarter note with an accent (^) and a slur. The third measure contains a quarter note with an accent (^) and a slur, followed by a quarter note with an accent (^) and a slur. The fourth measure contains a quarter note with an accent (^) and a slur, followed by a quarter note with an accent (^) and a slur. The measure is circled with the number 14. The label "Block B" is written below the staff.

Polo

Block B

15

Block B

16

Block B

17

PIANO

Handwritten musical score for Piano, Bass, and Strings, measures 20-22. The score is written on three staves. The Piano staff (top) starts with a dynamic marking of $pp =$ and contains notes with accents (^) and slurs. The Bass staff (middle) also starts with $pp =$ and contains notes with accents (^) and slurs. The Strings staff (bottom) contains rhythmic notation with stems and flags. The measure numbers 20, 21, and 22 are circled at the end of each staff.

Handwritten musical score for Piano, Bass, and Strings, measures 23-25. The score is written on three staves. The Piano staff (top) starts with a dynamic marking of $p =$ and contains notes with accents (^) and slurs. The Bass staff (middle) contains notes with accents (^) and slurs. The Strings staff (bottom) contains rhythmic notation with stems and flags. The measure numbers 23, 24, and 25 are circled at the end of each staff.

22

Handwritten musical score for measures 22-23. The score is written on a grand staff with a treble clef on the upper staff and a bass clef on the lower staff. The music is in 4/4 time. Measure 22 begins with a piano (p) dynamic marking. The melody in the treble clef consists of eighth and quarter notes, with some slurs and accents. The bass clef accompaniment features a steady eighth-note pattern in the first two measures, followed by chords in the last two measures. Measure 23 continues the melodic line in the treble clef, ending with a fermata. The bass clef accompaniment continues with chords and rests. The page number '22' is circled in the top right corner.

23

Handwritten musical score for measures 24-25. The score is written on a grand staff with a treble clef on the upper staff and a bass clef on the lower staff. The music is in 4/4 time. Measure 24 begins with a forte (f) dynamic marking. The melody in the treble clef consists of eighth and quarter notes, with some slurs and accents. The bass clef accompaniment features a steady eighth-note pattern in the first two measures, followed by chords in the last two measures. Measure 25 continues the melodic line in the treble clef, ending with a fermata. The bass clef accompaniment continues with chords and rests. The page number '23' is circled in the top right corner.

Handwritten musical score for measures 24 and 25. The score is written on a grand staff with treble and bass clefs. Measure 24 is circled in the top right corner.

Measure 24 contains the following notes and chords:

- Treble Clef:** Chords of $\text{F}^{\flat} \text{A}^{\flat} \text{C}^{\flat}$ and $\text{G}^{\flat} \text{B}^{\flat} \text{D}^{\flat}$ with accents and slurs.
- Bass Clef:** Chords of $\text{F}^{\flat} \text{A}^{\flat} \text{C}^{\flat}$ and $\text{G}^{\flat} \text{B}^{\flat} \text{D}^{\flat}$ with accents and slurs.

Measure 25 contains the following notes and chords:

- Treble Clef:** Chords of $\text{F}^{\flat} \text{A}^{\flat} \text{C}^{\flat}$ and $\text{G}^{\flat} \text{B}^{\flat} \text{D}^{\flat}$ with accents and slurs.
- Bass Clef:** Chords of $\text{F}^{\flat} \text{A}^{\flat} \text{C}^{\flat}$ and $\text{G}^{\flat} \text{B}^{\flat} \text{D}^{\flat}$ with accents and slurs.

Handwritten musical score for measures 24 and 25. The score is written on a grand staff with treble and bass clefs. Measure 25 is circled in the top right corner.

Measure 24 contains the following notes and chords:

- Treble Clef:** Chords of $\text{F}^{\flat} \text{A}^{\flat} \text{C}^{\flat}$ and $\text{G}^{\flat} \text{B}^{\flat} \text{D}^{\flat}$ with accents and slurs.
- Bass Clef:** Chords of $\text{F}^{\flat} \text{A}^{\flat} \text{C}^{\flat}$ and $\text{G}^{\flat} \text{B}^{\flat} \text{D}^{\flat}$ with accents and slurs.

Measure 25 contains the following notes and chords:

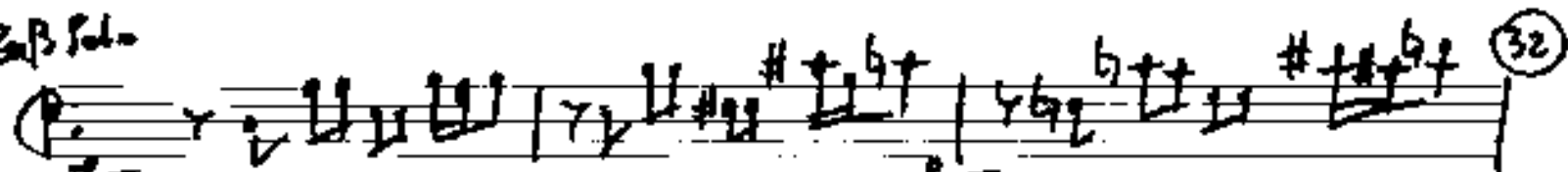
- Treble Clef:** Chords of $\text{F}^{\flat} \text{A}^{\flat} \text{C}^{\flat}$ and $\text{G}^{\flat} \text{B}^{\flat} \text{D}^{\flat}$ with accents and slurs.
- Bass Clef:** Chords of $\text{F}^{\flat} \text{A}^{\flat} \text{C}^{\flat}$ and $\text{G}^{\flat} \text{B}^{\flat} \text{D}^{\flat}$ with accents and slurs.

Sax (sax) roba

Handwritten musical score for saxophone and piano, measures 30-31. The score is written on two systems of staves. The top system (measures 30-31) features a saxophone part with a circled plus sign and a circled number 30. The bottom system (measures 30-31) features a piano accompaniment with a circled number 31. The piano part includes a circled plus sign and a circled number 30. The saxophone part includes a circled plus sign and a circled number 30. The piano part includes a circled plus sign and a circled number 30. The saxophone part includes a circled plus sign and a circled number 30. The piano part includes a circled plus sign and a circled number 30.

Handwritten musical score for saxophone and piano, measures 32-33. The score is written on two systems of staves. The top system (measures 32-33) features a saxophone part with a circled number 32. The bottom system (measures 32-33) features a piano accompaniment with a circled number 33. The saxophone part includes a circled number 32. The piano part includes a circled number 33.

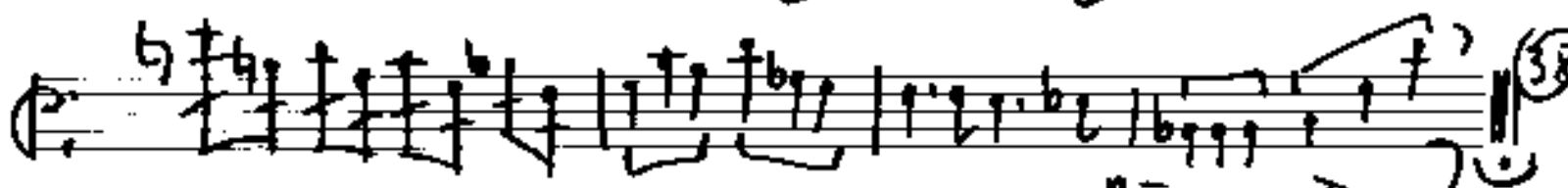
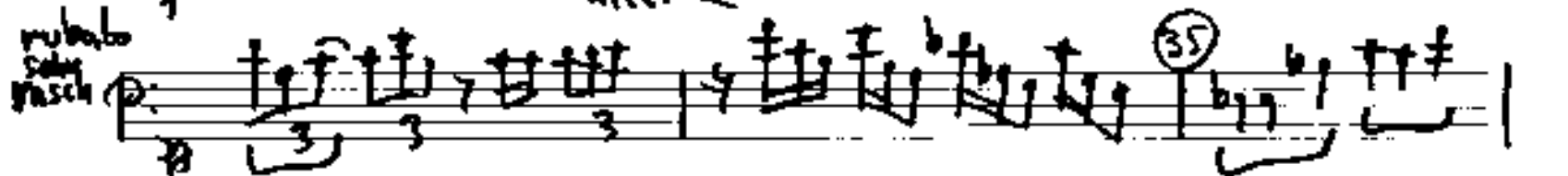
Baß Solo



KRASCH



rubato
Solo
krasch



rit + dim

D.C. Teil 2 / al. CODA

♩ CODA

Handwritten musical score for SAT, PIANO, Bass, and Schlagzeug. The score is divided into two systems. The first system has four measures, and the second system has four measures. The SAT part features a melodic line with accents and a crescendo hairpin. The PIANO part has chords with accents. The Bass part has a rhythmic pattern of eighth notes. The Schlagzeug part has a simple rhythmic accompaniment. A circled 'R' is above the first measure of the second system, and a circled 'C' is at the end of the second system.

Sehr weich — noch steigern →

Handwritten musical score for Percussion and Solo. The score is written on a grand staff with five systems. The first system has a treble clef and a key signature of one sharp (F#). The second system has a bass clef. The third system has a treble clef. The fourth system has a bass clef. The fifth system has a treble clef. The score includes various musical notations such as notes, rests, and dynamic markings. A large bracket on the right side of the score indicates a section labeled "Solo". The word "Percussion" is written at the bottom left, and the name "Adolf Scherke" is written at the bottom right.

Percussion

Adolf Scherke