

Notenheft

Konzert für 2 Horn
 und Ensemble in 19 Teilen.

Adolf Scherbaum
 Liz. 19

Besetzung:

- Solo Horn in F. (in Partitur in F notiert)
- 1 Flöte
- 3 Trompeten (Trom.)
- 3 Posaunen (Trom.)
- Vibraphon
- Klavier
- 1 Solo Bass
- Solo Gesang

ad libitum

(bei öffentlichen
 Aufführungen)

(die einzelnen Teile gehen fast
 nahtlos ineinander)

Solo Horn - }
 Solo Flöte } eigene Mikrofone
 Solo Bass - } mit Verstärkeranlagen
 Vibraphon - } (Lautsprecher im Saal verteilt)

Teil 1

Horn (frei rubato)

ruhig

VIBRATO

accel.

frei

cresc. ...

fast attacca

viel VIBR.

Teil 2

breite Achtel

1 2 3 4 5

S
CHL
AG
ZEUG

fast attacca

Teil [3]

Horn (Solo rubato)

frei

accell

accell.

din

pp

Teil [4]

VIBRAPHON

sehr ruhig

1 0 1

pp 3 Achtel

1 2 3 4

Teil 5

(in Gedanken 4/4 Takt denken)

Flöte Solo ^① auf Reibel

6 (P) 12

VIBR

8 pp Pedal

Bass

pizz (P)

Schlagzeug

mf

f

pp

mf

f

pp

mf

mf

4

④

Handwritten musical score for measures 5-6. The score is written on four staves. The top staff (treble clef) contains a melodic line with a slur over measures 5 and 6, marked with a forte **f** dynamic. The second staff (treble clef) contains a piano accompaniment with a **pp** dynamic. The third staff (bass clef) contains a melodic line with a **p** dynamic. The bottom staff (bass clef) contains a piano accompaniment with a **p** dynamic. The key signature has one flat (B-flat), and the time signature is 4/4. Measure numbers 5 and 6 are written above the first two staves.

Handwritten musical score for measures 7-8. The score is written on four staves. The top staff (treble clef) contains a melodic line with a slur over measures 7 and 8, marked with a forte **f** dynamic. The second staff (treble clef) contains a piano accompaniment with a **pp** dynamic. The third staff (bass clef) contains a melodic line with a **f** dynamic. The bottom staff (bass clef) contains a piano accompaniment with a **f** dynamic. The key signature has one flat (B-flat), and the time signature is 4/4. Measure numbers 7 and 8 are written above the first two staves. A circled number 5 is written in the right margin.

Handwritten musical score for measures 9 and 10. The score is written on four staves: Treble clef (top), Bass clef (second), Bass clef (third), and Bass clef (bottom). Measure 9 starts with a circled 'p' and a sharp sign. Measure 10 has a circled 'p' and a circled '6'. Dynamics include *pp* and *pp*. The notation includes various accidentals, slurs, and articulation marks.

Handwritten musical score for measures 11 and 12. The score is written on four staves: Treble clef (top), Bass clef (second), Bass clef (third), and Bass clef (bottom). Measure 11 starts with a circled '6' and a circled 'p'. Measure 12 has a circled '6'. Dynamics include *f* and *pp*. The notation includes various accidentals, slurs, and articulation marks.

Handwritten musical score for measures 13, 14, and 15. The score is written on four staves. Measure 13 features a melodic line in the upper staff with a slur and a dynamic marking of *pp*. The lower staves contain complex rhythmic patterns with various accidentals. Measure 14 continues the melodic line with a slur and a dynamic marking of *pp*. Measure 15 concludes the melodic phrase with a slur and a dynamic marking of *pp*. The notation includes numerous accidentals (sharps, flats, naturals) and dynamic markings.

Handwritten musical score for measures 16, 17, and 18. The score is written on four staves. Measure 16 features a melodic line in the upper staff with a slur and a dynamic marking of *f*. Measure 17 continues the melodic line with a slur and a dynamic marking of *ff*. Measure 18 concludes the melodic phrase with a slur and a dynamic marking of *pp*. The notation includes numerous accidentals (sharps, flats, naturals) and dynamic markings. A circled number '7' is written in the top right corner of the system.

Teil 6

Horn solo (frei) rubato

cresc.

languorem — steigern →

acuti

frei

VIBR

VIBRATO

pp

Ped.

pp

pp

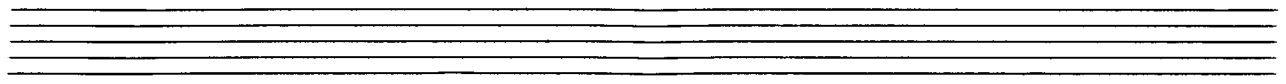
adagio

6/8

Teil 7

S
CHI
AG
ZEUG

6 auf Achtel



Teil 8

enough (Presto)

Horn Solo $\frac{2}{4}$

Flöte

VIBR

Bass

Celli

hast
stacc.

2 pizz

4

Block R

Horn Solo

Handwritten musical notation on a five-line staff. The word "BLOCK" is written in the center, with a circled "A" to its right. A bracket underneath spans from the beginning to the end of the staff. A circled number "13" is at the far right end of the staff.

Empty five-line musical staff.

Solo Horn

Handwritten musical notation on a five-line staff, consisting of a treble clef and three vertical bar lines.

Handwritten musical notation on a five-line staff, consisting of a treble clef and three vertical bar lines. A circled number "14" is at the far right end of the staff.

Empty five-line musical staff.

Handwritten musical notation on a five-line staff. The word "BLOCK" is written in the center, with a circled "A" to its right. A bracket underneath spans from the beginning to the end of the staff. A circled number "15" is at the far right end of the staff.

Empty five-line musical staff.

Solo Horn

Handwritten musical notation on a five-line staff, consisting of a treble clef and three vertical bar lines.

Handwritten musical notation on a five-line staff, consisting of a treble clef and three vertical bar lines. A circled number "16" is at the far right end of the staff.

Empty five-line musical staff.

Empty five-line musical staff.

Teil [9]

SOB HORN

frei

VIBRATO

pp sehr ruhig

17

Flöte

VIBR

Bass

Celli

VIBRATO

mit vibr. ausklingen lassen!

18

Teil 10

sehr ruhig) (4/4 Taktschritt)

Fl. ① auf Achtel

VIBR

Boß

Schlag

pp

ppp

1 2 3 4 1 2 3 4 1 2 3 4

1 2 3 4 1 2 3 4 1 2 3 4

①

3

4

19

mf

f

ppp

mf

f

mf

mf

mf

Handwritten musical score for measures 5-7. The score is written on four staves. The top staff is in treble clef and contains a melodic line with various accidentals (flats and naturals) and a fermata. The second staff is also in treble clef and contains a melodic line with slurs and accents. The third staff is in bass clef and contains a complex rhythmic accompaniment with many notes and accidentals. The bottom staff is in bass clef and contains a bass line with a fermata and some notes. The number '5' is written at the beginning of the first staff.

Handwritten musical score for measures 7-9. The score is written on four staves. The top staff is in treble clef and contains a melodic line with slurs and accents. The second staff is in treble clef and contains a melodic line with slurs and accents. The third staff is in bass clef and contains a complex rhythmic accompaniment with many notes and accidentals. The bottom staff is in bass clef and contains a bass line with a fermata and some notes. The number '7' is written at the beginning of the first staff, and the number '8' is written above the second measure of the first staff. A circled number '20' is written in the top right corner.

Handwritten musical score for measures 9-10. The score is written on four staves: Treble clef (top), Bass clef (second), Bass clef (third), and Bass clef (bottom). Measure 9 starts with a circled 'p' and a sharp sign. The top staff contains a melodic line with a slur over measures 9 and 10, and a triplet of eighth notes in measure 10. The second staff contains a piano part with a circled 'pp' and a sharp sign. The third staff contains a piano part with a circled 'p' and a sharp sign. The bottom staff contains a piano part with a circled 'pp' and a sharp sign. The key signature is one sharp (F#).

Handwritten musical score for measures 11-12. The score is written on four staves: Treble clef (top), Bass clef (second), Bass clef (third), and Bass clef (bottom). Measure 11 starts with a circled 'f' and a flat sign. The top staff contains a melodic line with a slur over measures 11 and 12, and a triplet of eighth notes in measure 12. The second staff contains a piano part with a circled 'f' and a flat sign. The third staff contains a piano part with a circled 'f' and a flat sign. The bottom staff contains a piano part with a circled 'f' and a flat sign. The key signature is one flat (Bb). Measure 12 ends with a circled '21'.

13

and

14

15

Handwritten musical score for measures 13-15. The score is written on four staves. The top staff is in treble clef, the second in bass clef, the third in alto clef, and the fourth in bass clef. Measure 13 includes a handwritten annotation 'and' and a 'W' with a wavy line. Measure 14 has a 'pp' dynamic marking. Measure 15 has a 'mf' dynamic marking. The music consists of various notes, rests, and slurs.

16

17

18

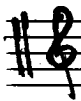
22

Handwritten musical score for measures 16-18. The score is written on four staves. The top staff is in treble clef, the second in bass clef, the third in alto clef, and the fourth in bass clef. Measure 16 has a 'mf' dynamic marking. Measure 17 has a 'mf' dynamic marking. Measure 18 has a 'ppp' dynamic marking. The music includes various notes, rests, and slurs. At the bottom of the page, there are handwritten annotations 'poco' and 'gut...'.

Solo (Horn

Teil 11

frei (rubato)



23

Teil 12

1 2 3 *accelerando* 4 5

S
CHL
AG
ZE
UG

pp 6 (*aus Holz*)

mp 8

pp

24

Teil 13

Horn Solo (mehr rasch - energ)

Handwritten musical score for Horn Solo, measures 13-25. The score is written in treble clef with a 7/8 time signature. It features a series of eighth and sixteenth notes, often beamed together. There are several slurs and accents. A box containing the number '25' is at the end of the fourth staff. The word '(frei)' is written below the fourth staff.

Teil 14

KLAVER

Handwritten musical score for Klavier, measures 1-2. It is written in treble and bass clefs with a 7/8 time signature. The left hand has a steady eighth-note accompaniment. The right hand has chords and moving lines. There are slurs and accents. The word 'hart' is written below the first measure.

Handwritten musical score for Klavier, measures 3-4. It continues the previous system with similar notation. A box containing the number '26' is at the end of the second staff.

K
C
A
v.

5 *hart*

7

9

11

13

14

15

16

17

18

19

(Zwei)

28

Klavier ausklingend lassen

Presto (2/2)

Teil 15

Baß

Schlags

1 2 3 4 5 6

pizz *pizz ff* *hart pizz*

din >

din >

(Presto einsetzen wenn Klavier etwas nachklungen)
aber noch ff

29

1. Horn

Baß

Schlags

7 8 9 10

p

p

11

12

13

14

11 12 13 14

mf

f

mf

15 16 17 18

Flöte (out 2x)

19 20 21 22

23 24 25 26

Handwritten musical score for measures 27-30. The system includes a treble clef staff with a melodic line, a grand staff (bass and piano) with harmonic accompaniment, and a bass staff with a rhythmic accompaniment. Measure 27 is a whole rest. Measures 28-30 feature a melodic line with slurs and accents, and a piano accompaniment with chords and a rhythmic pattern.

Handwritten musical score for measures 31-34. The system includes a treble clef staff with a melodic line, a grand staff (bass and piano) with harmonic accompaniment, and a bass staff with a rhythmic accompaniment. Measures 31-34 feature a melodic line with slurs and accents, and a piano accompaniment with chords and a rhythmic pattern.

Handwritten musical score for measures 35-38. The system includes a treble clef staff with a melodic line, a grand staff (bass and piano) with harmonic accompaniment, and a bass staff with a rhythmic accompaniment. Measure 35 includes the instruction "ad. lib. OKT. tiefer". Measures 35-38 feature a melodic line with slurs and accents, and a piano accompaniment with chords and a rhythmic pattern.

39 *mf* *mf* *mf* *mf*

43 *mf* *mf* *mf* *mf*

47 *mf* *mf* *mf* *mf* **30**

51 52 53 54

STR in C

3Pos

Bass

Subbass

55 56 57 58

59 60 61 62

Block B

63 64 65 66

HORN

Bass

Subbass

67 68 69 70

31

71 72 73 74

32

Block B

75 76 77 78

H.

Bass

79

80

81

82

33

83

84

85

86

34

87

88

89

90

91

92

93

94

35

FÜG

FLÄRENZ.

HORN

(Horn setzt
klingt bis
(Kadenz))

VIBR

Violin

3TR

3TR

3POS

3POS

Bass

Bass

95

96

97

Flavia

Flavia

**S
CHL
AG
ZE
WG**

S
CHL
AG
ZE
WG

Block C

(ohne Solo Horn!)

Block [C]

98 99 100

37

Block [C]

101 102 103

38

Block [C]

104 105 106

39

Block [C]

107 108 109

40

Teil 16

41

Handwritten musical score for a horn part, consisting of 16 measures. The score is divided into four systems of four staves each. The first system (measures 110-111) is marked "(Kleine) G.P." and includes a "KADENZ" section. The second system (measures 112-113) is marked "(große) G.P.". The notation includes various rhythmic values, accidentals, and dynamic markings. There are also some illegible handwritten notes and symbols throughout the score.

Teil [17].

Flöte solo (viel Vibrato)

1 frei sehr ruhig pp

42

3 pp

43

5

77

7

44

9 10

VIBR

ppp

ppp

VIBR. verbleiben lassen

45

Teil 18

HORN (ruhig beginnen) ständig steigern
in Stärke und Tempo bis Presto

Solo (frei) pp

Schlagg.

pp Schlagzeug (dynamisch mit Solo Horn gehen!)

ruhig beginnen - große Steigerung -

ritacca

Presto

Teil 19

Handwritten musical score for Part 19, Presto. The score includes staves for Flöt, Horn, VIBR, 3TR, 3POS, Bass, Klar, and SCHLAGZEUG. The Flöt and Horn parts feature notes with accents and slurs. The VIBR section includes dynamic markings like *ad lib. laet* and *(ad lib.) kurze Kadenz oder Pause*. The 3TR and 3POS parts have bracketed sections. The Klar part has a *Solo* box with *collage solo (ad libitum)* written below it. The SCHLAGZEUG part has a *Solo* box and *collage solo (ad libitum)* written below it. The score concludes with a large bracketed section labeled *FINÉ. Adagio Scherzhaft* and *FINÉ. Adagio Scherzhaft* written vertically on the right side. The bottom right corner has the instruction *LANGE HALTEN*.