



Variation über Agnus Dei
(im alten Stil)

Handwritten musical notation for the first system. The treble staff begins with a treble clef and a forte dynamic marking 'f'. It contains a series of notes, including a half note with a fermata. The bass staff contains a whole note with a fermata. A large slur encompasses both staves across the system.

Handwritten musical notation for the second system. The treble staff contains a half note with a fermata, followed by a quarter note and a half note. The bass staff contains a half note with a sharp sign, followed by a quarter note and a half note. A large slur encompasses both staves across the system.

Handwritten musical notation for the third system. The treble staff contains a half note with a fermata, followed by a quarter note and a half note. The bass staff contains a half note with a sharp sign, followed by a quarter note and a half note. A large slur encompasses both staves across the system.

Handwritten musical notation for the first system. It consists of two staves. The upper staff contains several notes with accidentals (flats and sharps) and a wavy line. The lower staff contains notes with accidentals and a guitar-like chord diagram with six strings and various frets. A large slur encompasses the entire system.

Handwritten musical notation for the second system. It consists of two staves. The upper staff has notes with accidentals and a wavy line. The lower staff has notes with accidentals and a wavy line. A large slur encompasses the entire system.

Handwritten musical notation for the third system. It consists of two staves. The upper staff has notes with accidentals and a wavy line. The lower staff has notes with accidentals and a wavy line. A large slur encompasses the entire system.

Handwritten musical notation in black ink. The notation includes a treble clef, a common time signature (C), and a 3/4 time signature. The music features a melodic line with a slur and a bass line with a slur. The right hand part shows a sequence of notes with accidentals (flats) and a final triplet of notes.

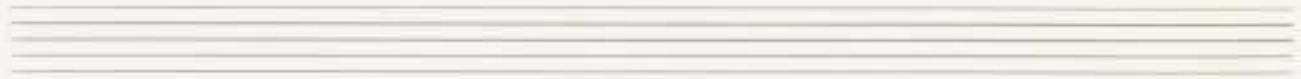
Handwritten musical notation in red ink. The notation includes a treble clef and a 4/4 time signature. The music features a melodic line with a slur and a bass line with a slur. The right hand part shows a sequence of notes with accidentals (flats) and a final triplet of notes.

Handwritten musical notation in red ink. The notation includes a treble clef, a common time signature (C), and a 3/4 time signature. The music features a melodic line with a slur and a bass line with a slur. The right hand part shows a sequence of notes with accidentals (flats) and a final triplet of notes.

Handwritten musical notation for the first system. The treble staff contains two measures: the first has a whole note G4, and the second has a quarter note G4, a quarter note A4, a quarter note B4, and a quarter note C5. The bass staff contains two measures: the first has a whole note G3 with a sharp sign, and the second has a whole note G3. A large slur covers the entire system.

Handwritten musical notation for the second system. The treble staff contains two measures: the first has a whole note G4, a whole note A4, and a whole note B4; the second has a whole note C5, a whole note B4, and a whole note A4. The bass staff contains two measures: the first has a whole note G3 with a sharp sign, and the second has a complex chordal structure with a sharp sign and a '5' above it. A large slur covers the entire system.

Handwritten musical notation for the third system. The treble staff contains two measures: the first has a complex chordal structure with a sharp sign, and the second has a complex chordal structure with a sharp sign and a '5' above it. The bass staff contains two measures: the first has a whole note chord with a sharp sign, and the second has a whole note chord with a sharp sign. A large slur covers the entire system.



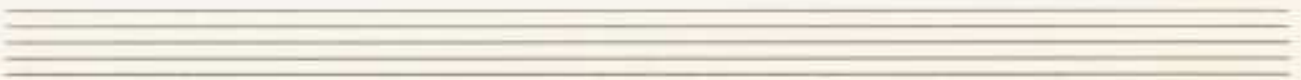
Handwritten musical notation in red ink on a staff. It features a treble clef, a key signature of one flat (B-flat), and a common time signature. The notation includes a melodic line with a slur over two notes, a bass line with a slur over two notes, and various accidentals and dynamics markings.



Handwritten musical notation in red ink on a staff. It features a treble clef, a key signature of one flat (B-flat), and a common time signature. The notation includes a melodic line with a slur over two notes, a bass line with a slur over two notes, and various accidentals and dynamics markings.



Handwritten musical notation in red ink on a staff. It features a treble clef, a key signature of one flat (B-flat), and a common time signature. The notation includes a melodic line with a slur over two notes, a bass line with a slur over two notes, and various accidentals and dynamics markings.



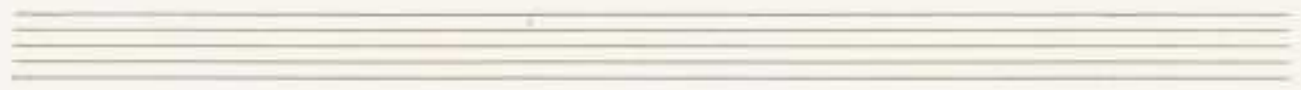
Handwritten musical score for two staves. The top staff is a treble clef and the bottom staff is a bass clef. The music is written in red ink. The top staff contains a melodic line with notes, rests, and accidentals, including a large slur over the first five measures. The bottom staff contains a bass line with notes, rests, and accidentals, including a slur under the first five measures. The piece ends with a double bar line and a fermata-like flourish on the right side of the top staff. There are several empty staves below the first two.

Fantasie (alten Fließ) ⁱⁿ unter einem Choral

rasch

breit

rasch



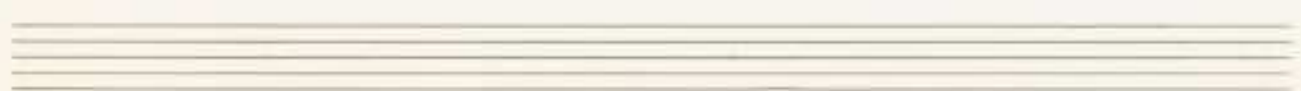
breit



grasch



tr. breit



$\frac{8}{8}$ *poco rit.* $\frac{8}{8}$ *breit*

Maestoso

gut.

ruhig

(P)

beim 2. x ab hier schreibt 77 bis Ende)

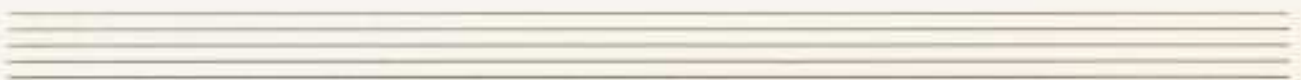
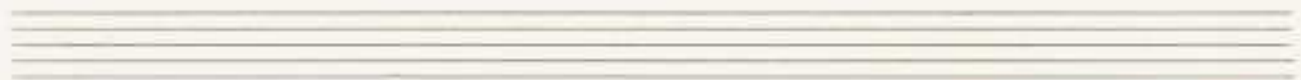
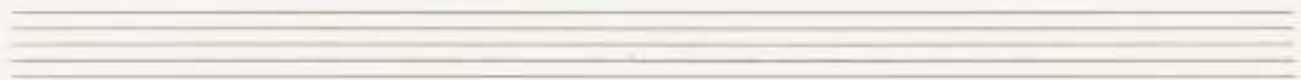
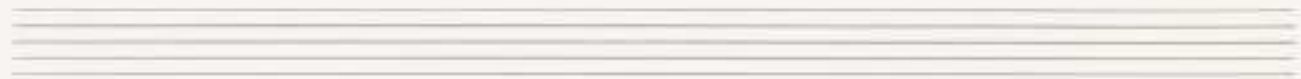
The image shows a handwritten musical score on a page with six systems of two staves each. The notation is written in red ink. The first system contains a melodic line in the upper staff with a slur over the first two measures and a 'c' above the first measure. The lower staff has a bass line with a slur over the first two measures and a 'c' above the first measure. The second system continues the melodic line with a slur over the first three measures and a 'c' above the first measure. The lower staff has a bass line with a slur over the first three measures and a 'c' above the first measure. The third system shows the melodic line with a slur over the first four measures and a 'c' above the first measure. The lower staff has a bass line with a slur over the first four measures and a 'c' above the first measure. The fourth system shows the melodic line with a slur over the first five measures and a 'c' above the first measure. The lower staff has a bass line with a slur over the first five measures and a 'c' above the first measure. The fifth system shows the melodic line with a slur over the first six measures and a 'c' above the first measure. The lower staff has a bass line with a slur over the first six measures and a 'c' above the first measure. The sixth system shows the melodic line with a slur over the first seven measures and a 'c' above the first measure. The lower staff has a bass line with a slur over the first seven measures and a 'c' above the first measure. The notation includes various note values, rests, and dynamic markings such as 'p' and 'f'.

Handwritten musical notation for the first system, featuring a treble clef staff with a melodic line and a bass clef staff with accompaniment. The notation includes various note values, rests, and slurs.

Handwritten musical notation for the second system, continuing the melodic and accompaniment lines from the first system.

Handwritten musical notation for the third system, concluding with a double bar line and a "FINE" box.

poco rit



Handwritten musical notation for the first system. The treble staff contains a melodic line with eighth and sixteenth notes, including a trill. The bass staff contains a bass line with a whole note and a half note. A large slur covers both staves.

Handwritten musical notation for the second system. The treble staff has a melodic line with a trill and a fermata. The bass staff has a bass line with a fermata. A large slur covers both staves.

Handwritten musical notation for the third system. The treble staff has a melodic line with a trill and a fermata. The bass staff has a bass line with a fermata. A large slur covers both staves.

Handwritten musical notation for the first system. It consists of two staves. The upper staff is in treble clef and contains a melodic line with a long slur over the first two measures. The lower staff is in bass clef and contains a bass line with a long slur over the first two measures. The notation is in red ink.

Handwritten musical notation for the second system. It consists of two staves. The upper staff is in treble clef and contains a melodic line with a long slur over the first two measures. The lower staff is in bass clef and contains a bass line with a long slur over the first two measures. The notation is in red ink.

Handwritten musical notation for the third system. It consists of two staves. The upper staff is in treble clef and contains a melodic line with a long slur over the first two measures. The lower staff is in bass clef and contains a bass line with a long slur over the first two measures. The notation is in red ink.

D. C.
al.
Fine