

Notenheft

Variation über Agnus Dei  
(im alten Stil)

Handwritten musical notation for the first system. The treble clef staff begins with a treble clef and a sharp sign (F#). The bass clef staff begins with a bass clef and a flat sign (Bb). The notation includes various note values, rests, and accidentals, with a large slur spanning across the system.

Handwritten musical notation for the second system. The treble clef staff continues with notes and rests, including a sharp sign (F#). The bass clef staff continues with notes and rests, including a flat sign (Bb). The notation includes various note values, rests, and accidentals, with a large slur spanning across the system.

Handwritten musical notation for the third system. The treble clef staff continues with notes and rests, including a flat sign (Bb). The bass clef staff continues with notes and rests, including a sharp sign (F#). The notation includes various note values, rests, and accidentals, with a large slur spanning across the system.

Handwritten musical notation on a grand staff. The upper staff contains a treble clef, a key signature of one flat (B-flat), and a common time signature. It features a series of notes, including a half note B-flat, a quarter note A, and a quarter note G, followed by a complex chordal passage. The lower staff contains a bass clef and a common time signature, with notes including a half note F, a quarter note E, and a quarter note D. Dynamic markings 'p' and 'p.' are present. A large slur encompasses the first two measures of the upper staff.

Handwritten musical notation on a grand staff. The upper staff contains a treble clef, a key signature of one flat, and a common time signature. It features a series of notes, including a half note B-flat, a quarter note A, and a quarter note G, followed by a complex chordal passage. The lower staff contains a bass clef and a common time signature, with notes including a half note F, a quarter note E, and a quarter note D. Dynamic markings 'p' and 'p.' are present. A large slur encompasses the first two measures of the upper staff.

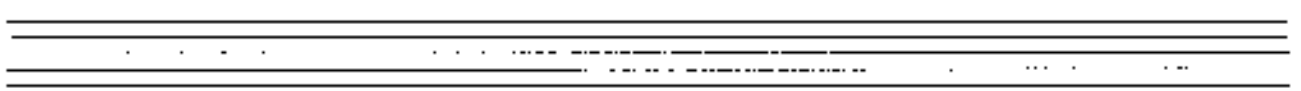
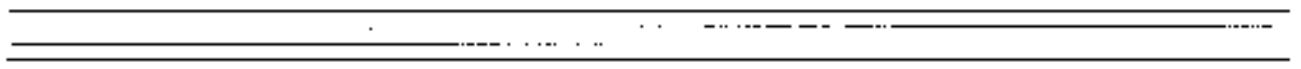
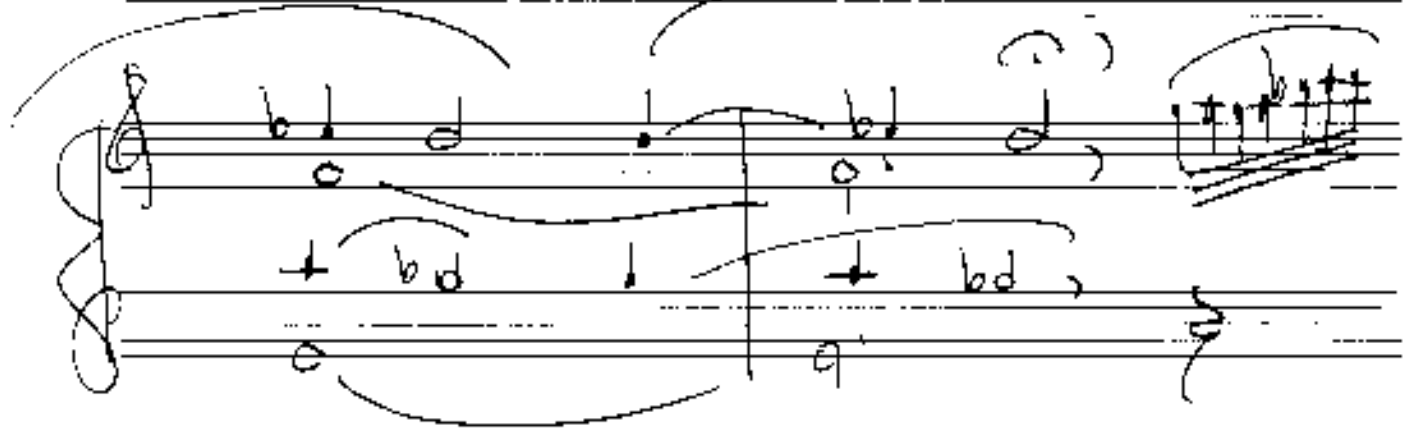
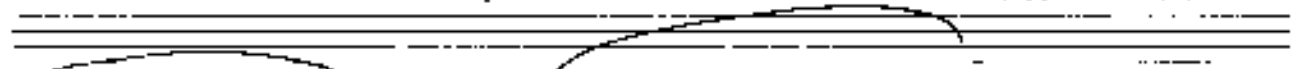
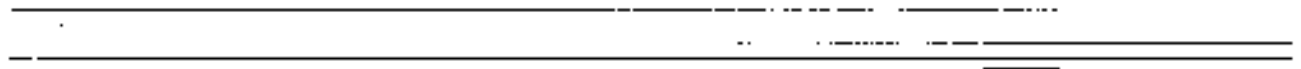
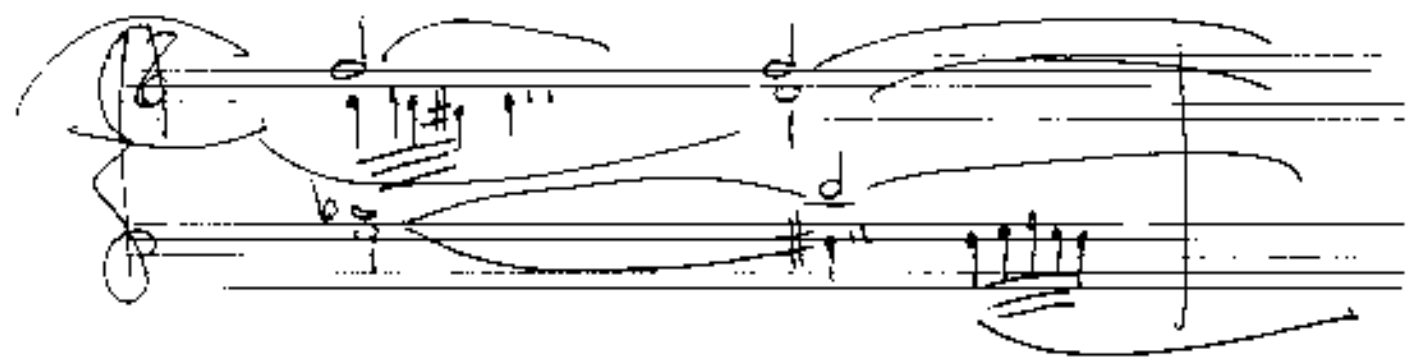
Handwritten musical notation on a grand staff. The upper staff contains a treble clef, a key signature of one flat, and a common time signature. It features a series of notes, including a half note B-flat, a quarter note A, and a quarter note G, followed by a complex chordal passage. The lower staff contains a bass clef and a common time signature, with notes including a half note F, a quarter note E, and a quarter note D. Dynamic markings 'p' and 'p.' are present. A large slur encompasses the first two measures of the upper staff.



Handwritten musical notation on two staves. The top staff is in treble clef with a key signature of one sharp (F#) and a common time signature (C). It contains a melody with quarter and eighth notes, some beamed together, and a long slur over the first two measures. The bottom staff is in bass clef with the same key signature and time signature, featuring a bass line with quarter notes and a long slur over the first two measures.

Handwritten musical notation on two staves. The top staff is in treble clef with a key signature of one sharp (F#) and a common time signature (C). It contains a melody with quarter notes and a long slur over the first two measures. The bottom staff is in bass clef with the same key signature and time signature, featuring a bass line with quarter notes and a long slur over the first two measures. There is a handwritten '5' above a chord in the second measure of the bottom staff.

Handwritten musical notation on two staves. The top staff is in treble clef with a key signature of one sharp (F#) and a common time signature (C). It contains a melody with quarter notes and a long slur over the first two measures. The bottom staff is in bass clef with the same key signature and time signature, featuring a bass line with quarter notes and a long slur over the first two measures. There are handwritten '2' and '3' above notes in the second measure of the top staff.



The image shows a handwritten musical score on ten staves. The top two staves contain a melody. The first staff has a treble clef and a key signature of one sharp (F#). The melody consists of several measures with notes, accidentals, and slurs. The second staff continues the melody with similar notation. The remaining eight staves are empty. A large, decorative flourish is drawn on the right side of the page, extending from the top two staves down to the bottom two staves.

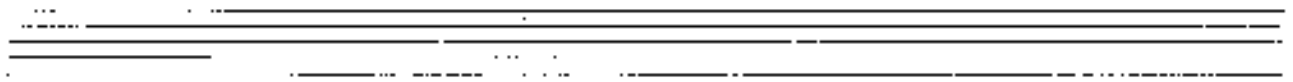
Fantasie (alten stile) *unter einem Choral*

*rasch*

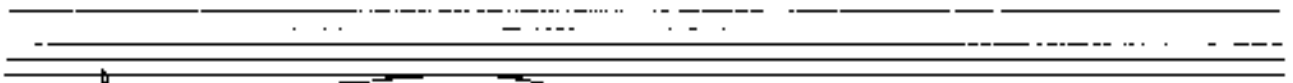
*breit*

*rasch*

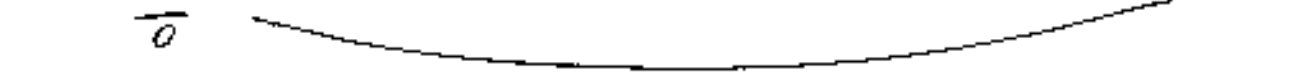




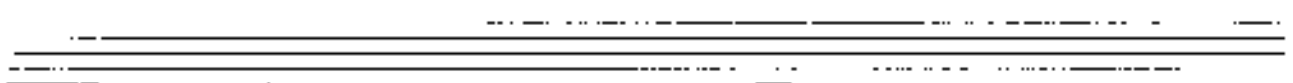
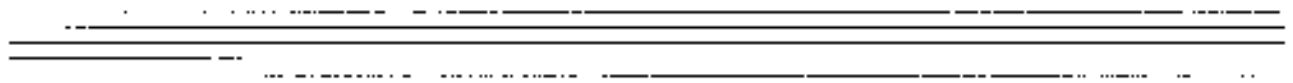
*breit*



*rasch*



*breit*



poco rit.      *breit*

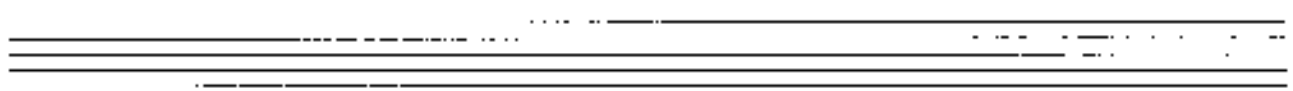
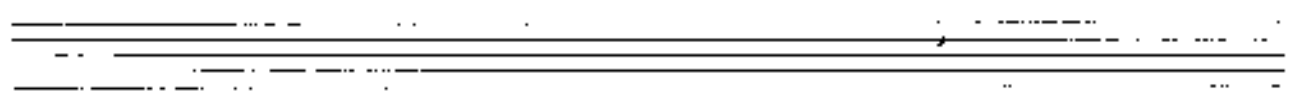
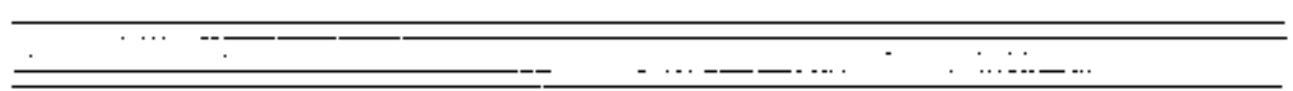
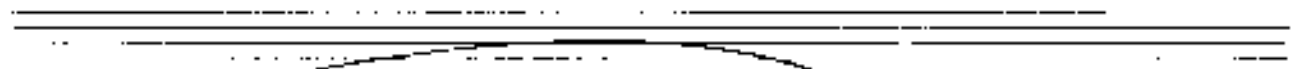
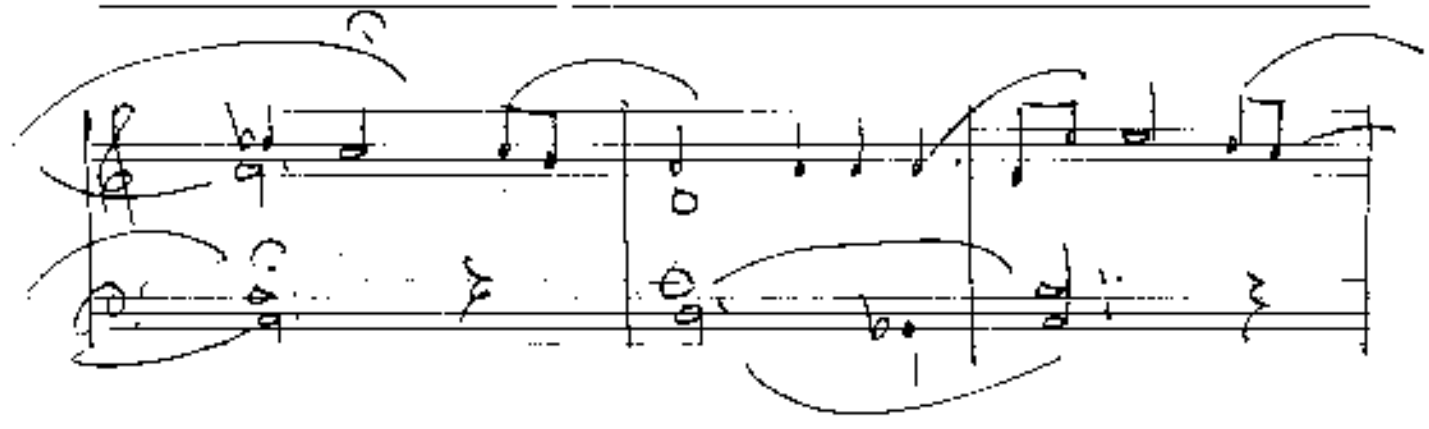
*Maestoso*

Handwritten musical notation for the first system. The treble staff contains a whole note chord (F4, A4, C5) in the first measure, followed by a whole note chord (D4, F4, A4) in the second measure. The bass staff contains a whole note chord (C3, E3, G3) in the first measure, followed by a whole note chord (F3, A3, C4) in the second measure. A slur connects the two measures in both staves. The word "part" is written above the treble staff.

Handwritten musical notation for the second system. The treble staff has a whole note chord (F4, A4, C5) in the first measure, followed by a half note chord (D4, F4) in the second measure, and a half note chord (A4, C5) in the third measure. The bass staff has a whole note chord (C3, E3, G3) in the first measure, followed by a whole note chord (F3, A3, C4) in the second measure, and a whole note chord (D3, F3, A3) in the third measure. A slur connects the two measures in both staves. The word "guitar" is written above the treble staff. A circled "P" is written below the treble staff in the second measure. A bracket under the bass staff spans the second and third measures.

beim 2x ab hier separat 77 bis hier)

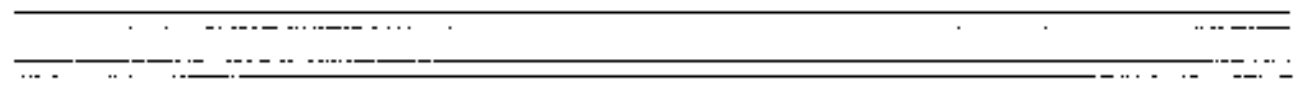
Handwritten musical notation for the third system. The treble staff contains a half note chord (F4, A4) in the first measure, followed by a half note chord (C5, E5) in the second measure, and a half note chord (D4, F4) in the third measure. The bass staff contains a whole note chord (C3, E3, G3) in the first measure, followed by a whole note chord (F3, A3, C4) in the second measure, and a whole note chord (D3, F3, A3) in the third measure. A slur connects the two measures in both staves.



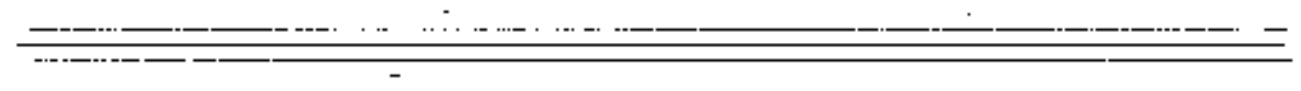




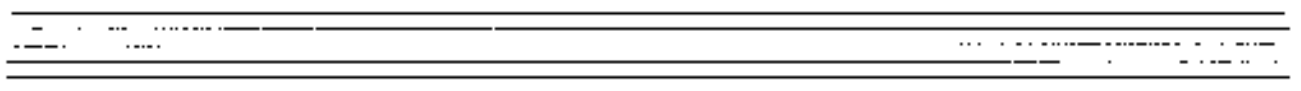
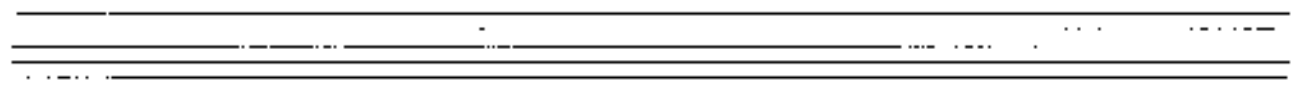
Handwritten musical notation for the first system. The upper staff is in treble clef and contains two measures of music with a circled 'pp' dynamic marking. The lower staff is in bass clef and contains two measures of music. Both staves feature notes with stems and beams, and are connected by large, sweeping horizontal lines.



Handwritten musical notation for the second system. The upper staff is in treble clef and contains two measures of music. The lower staff is in bass clef and contains two measures of music. The notation includes notes with stems and beams, and is connected by large, sweeping horizontal lines.



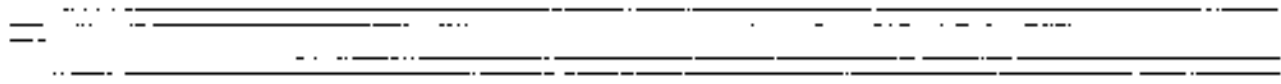
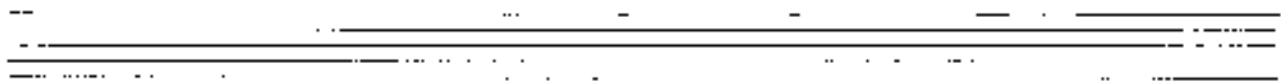
Handwritten musical notation for the third system. The upper staff is in treble clef and contains two measures of music. The lower staff is in bass clef and contains two measures of music. The notation includes notes with stems and beams, and is connected by large, sweeping horizontal lines.



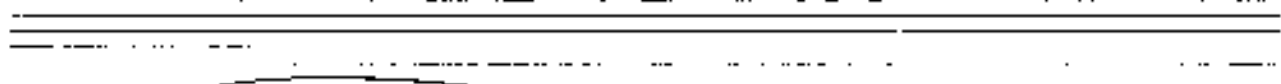
Handwritten musical notation on a grand staff. The top staff is in treble clef, and the bottom staff is in bass clef. The music consists of two measures. The first measure has a treble staff with eighth notes and a bass staff with a whole note chord. The second measure has a treble staff with eighth notes and a bass staff with a whole note chord. A large slur covers both staves across both measures.

Handwritten musical notation on a grand staff. The top staff is in treble clef, and the bottom staff is in bass clef. The music consists of two measures. The first measure has a treble staff with eighth notes and a bass staff with a whole note chord. The second measure has a treble staff with eighth notes and a bass staff with a whole note chord. A large slur covers both staves across both measures.

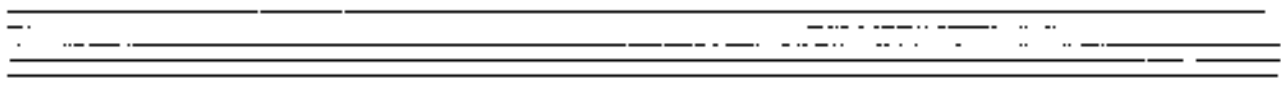
Handwritten musical notation on a grand staff. The top staff is in treble clef, and the bottom staff is in bass clef. The music consists of two measures. The first measure has a treble staff with eighth notes and a bass staff with a whole note chord. The second measure has a treble staff with eighth notes and a bass staff with a whole note chord. A large slur covers both staves across both measures.



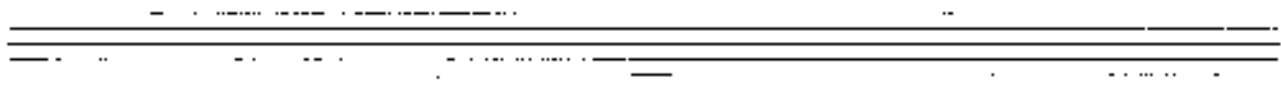
Handwritten musical notation system 1. It consists of two staves. The upper staff is in treble clef and contains a melodic line with eighth notes and a final half note. The lower staff is in bass clef and contains a bass line with eighth notes and a final half note. A slur covers both staves across two measures. There are some handwritten annotations, including 'p' and 'b'.



Handwritten musical notation system 2. It consists of two staves. The upper staff is in treble clef and contains a melodic line with quarter notes and a final half note. The lower staff is in bass clef and contains a bass line with eighth notes and a final half note. A slur covers both staves across two measures. There are some handwritten annotations, including 'p' and 'b'.



Handwritten musical notation system 3. It consists of two staves. The upper staff is in treble clef and contains a melodic line with quarter notes and a final half note. The lower staff is in bass clef and contains a bass line with eighth notes and a final half note. A slur covers both staves across two measures. There are some handwritten annotations, including 'p' and 'b'.





Handwritten musical notation on two staves. The top staff has a treble clef and contains notes with stems and beams, including a circled group of notes. The bottom staff has a bass clef and contains notes with stems and beams, including a circled group of notes.

Handwritten musical notation on two staves. The top staff has a treble clef and contains notes with stems and beams, including a circled group of notes. The bottom staff has a bass clef and contains notes with stems and beams, including a circled group of notes.

D.C.  
al  
Fine