

Notenheft

Variation über Agnus Dei
(im alten Stil)

Handwritten musical notation for the first system, featuring treble and bass staves with notes, rests, and dynamic markings like 'f'.

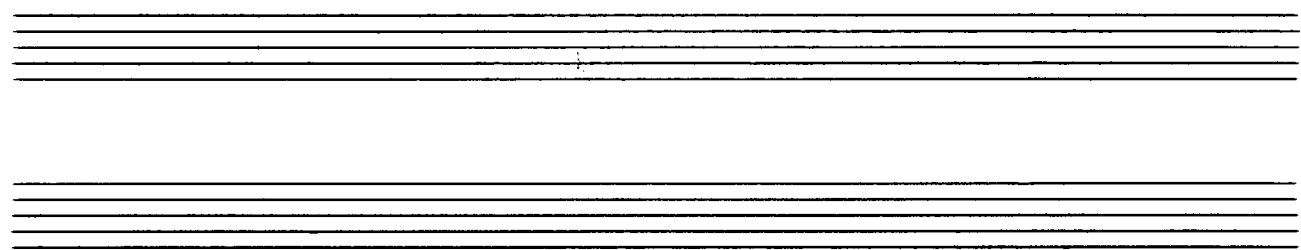
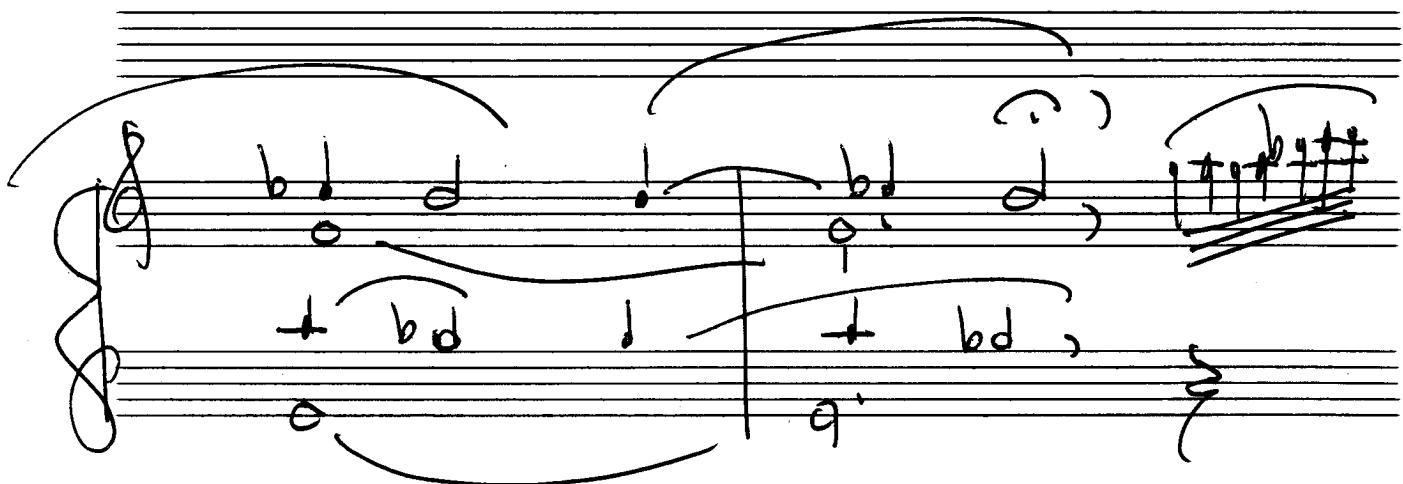
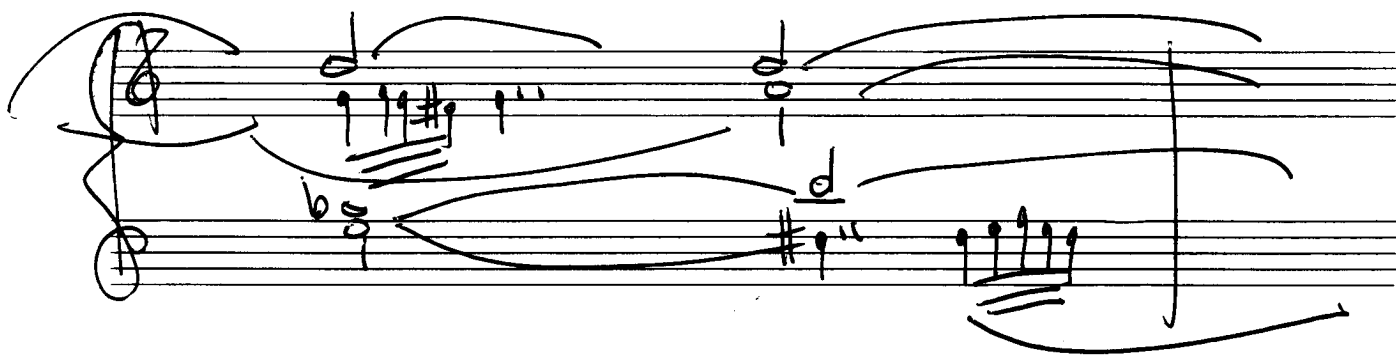
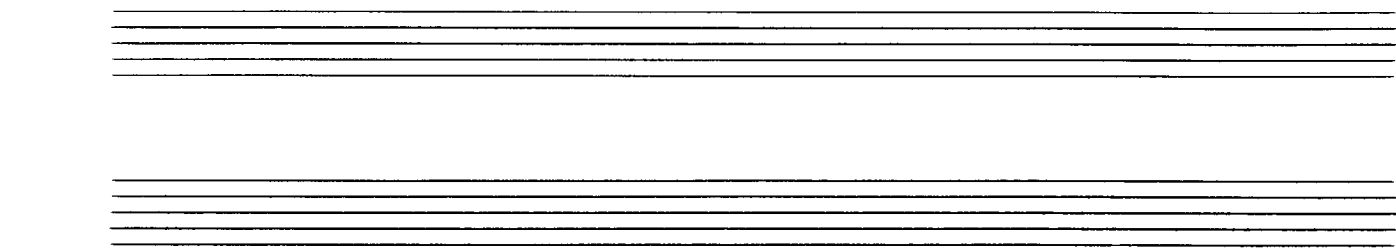
Handwritten musical notation for the second system, showing complex melodic lines and harmonic accompaniment.

Handwritten musical notation for the third system, continuing the musical piece with various note values and accidentals.

Handwritten musical notation for the first system. It consists of two staves. The upper staff is in treble clef and the lower in bass clef. The music begins with a common time signature (C) and a key signature of one flat (B-flat). The first measure contains a whole note chord in the bass and a half note chord in the treble. The second measure is a whole rest in both staves. The third measure is marked with a 3/4 time signature and contains a triplet of eighth notes in the treble and a whole note in the bass. The fourth measure contains a triplet of eighth notes in the treble and a whole note in the bass. The system concludes with a double bar line.

Handwritten musical notation for the second system. It consists of two staves. The upper staff is in treble clef and the lower in bass clef. The music begins with a 4/4 time signature and a key signature of one flat. The first measure contains a half note in the treble and a whole note in the bass. The second measure contains a half note in the treble and a whole note in the bass. The third measure contains a half note in the treble and a whole note in the bass. The fourth measure contains a half note in the treble and a whole note in the bass. The system concludes with a double bar line.

Handwritten musical notation for the third system. It consists of two staves. The upper staff is in treble clef and the lower in bass clef. The music begins with a common time signature (C) and a key signature of one flat. The first measure contains a half note in the treble and a whole note in the bass. The second measure contains a half note in the treble and a whole note in the bass. The third measure contains a half note in the treble and a whole note in the bass. The fourth measure contains a half note in the treble and a whole note in the bass. The system concludes with a double bar line.



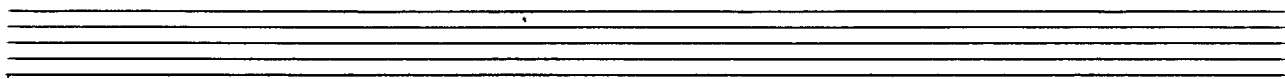
Handwritten musical score for two staves. The top staff is in treble clef and the bottom staff is in bass clef. The music is in common time (C) and features a complex melodic line with many accidentals and ornaments. A large slur covers the first five measures of the top staff. The bottom staff has a similar melodic line with a slur under the first five measures. The notation is dense and includes many accidentals and ornaments.

Fantasie (alten Stil) / über einen Choral

rasch

breit

rasch



breit

Handwritten musical notation for the first system. The treble clef staff contains a half note G4 with a flat, followed by a quarter note A4 with a sharp. The bass clef staff contains a half note G3 with a sharp, followed by a quarter note A3 with a flat. The system concludes with a double bar line and a fermata over the final notes.



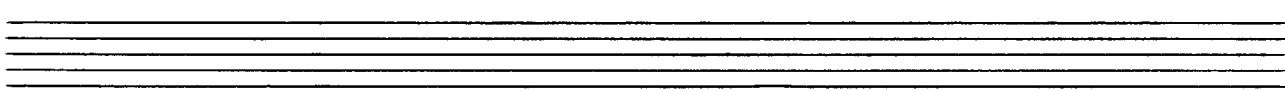
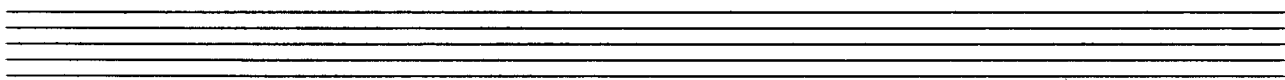
rasch

Handwritten musical notation for the second system. The treble clef staff contains a rapid sixteenth-note passage. The first part is in G major (one sharp), and the second part is in G minor (two flats). The system concludes with a double bar line and a fermata.



breit

Handwritten musical notation for the third system. The treble clef staff contains a wide interval from G3 to G4, followed by a series of notes. The system concludes with a double bar line and a fermata over the final notes.



Handwritten musical notation for a section. The top staff contains the tempo markings "poco" and "rit." above the first measure, and "breit" above the second measure. The key signature is one sharp (F#). The first measure has a treble clef and a common time signature (C). The second measure has a bass clef and a common time signature (C). Both staves feature a series of eighth notes beamed together, with a fermata over the final note of each phrase. The notes in the first measure are G4, A4, B4, C5, and the notes in the second measure are G4, A4, B4, C5.

Handwritten musical notation for a section titled "Maestoso". The key signature is one sharp (F#). The first measure has a treble clef and a common time signature (C). The second measure has a bass clef and a common time signature (C). Both staves feature a series of eighth notes beamed together, with a fermata over the final note of each phrase. The notes in the first measure are G4, A4, B4, C5, and the notes in the second measure are G4, A4, B4, C5.

Handwritten musical notation for a section. The key signature is one sharp (F#). The first measure has a treble clef and a common time signature (C). The second measure has a bass clef and a common time signature (C). Both staves feature a series of eighth notes beamed together, with a fermata over the final note of each phrase. The notes in the first measure are G4, A4, B4, C5, and the notes in the second measure are G4, A4, B4, C5.

Handwritten musical notation for the first system. The treble clef staff contains a half note G4, a whole note G4, and a half note G4. The bass clef staff contains a half note G3, a quarter note G4, a quarter note G4, a quarter note G4, a quarter note G4, a quarter note G4, a quarter note G4, and a quarter note G4. There are various slurs and phrasing marks throughout the system.

Handwritten musical notation for the second system. The treble clef staff contains a half note G4, a quarter note G4, a quarter note G4, and a quarter note G4. The bass clef staff contains a half note G3, a quarter note G4, a quarter note G4, and a quarter note G4. A circled 'p' dynamic marking is present. A handwritten instruction in a box reads: "beim 2. x ab hier schreibt 77 bis heute)".

Handwritten musical notation for the third system. The treble clef staff contains a half note G4, a quarter note G4, a quarter note G4, a quarter note G4, a quarter note G4, a quarter note G4, and a quarter note G4. The bass clef staff contains a half note G3, a quarter note G4, a quarter note G4, and a quarter note G4. There are various slurs and phrasing marks throughout the system.

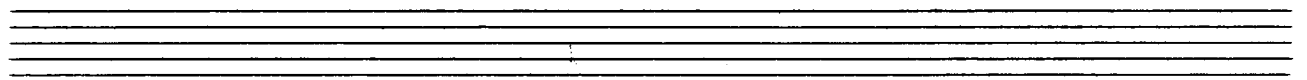
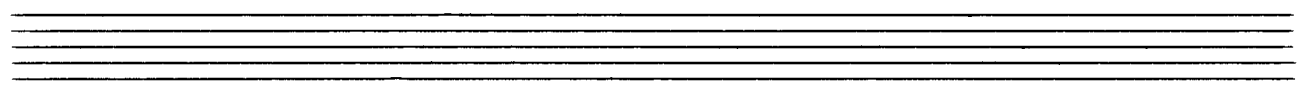
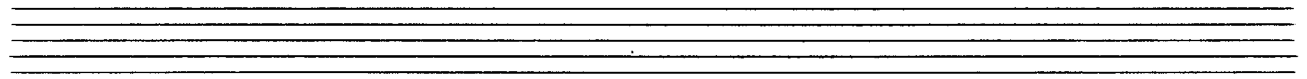
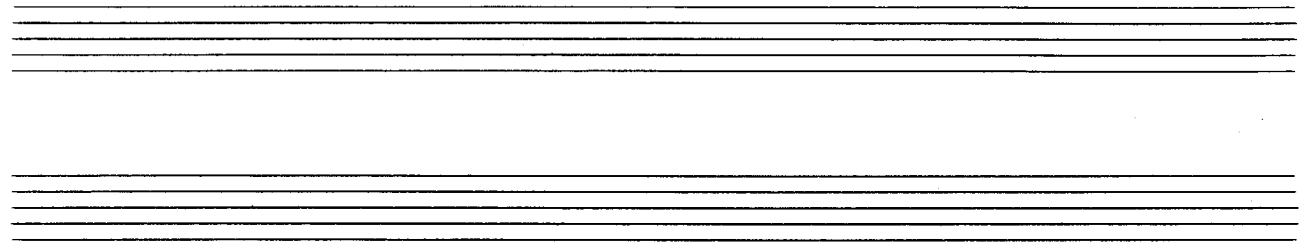
The image shows a handwritten musical score for two staves. It consists of two systems of music. Each system has two measures. The notation includes treble and bass clefs, various note values, rests, and dynamic markings like 'p' and 'f'. There are also some handwritten annotations and a large slur across the first measure of the second system.

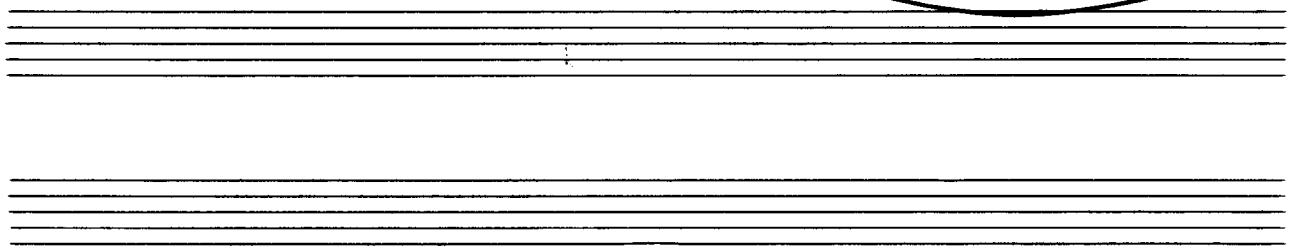
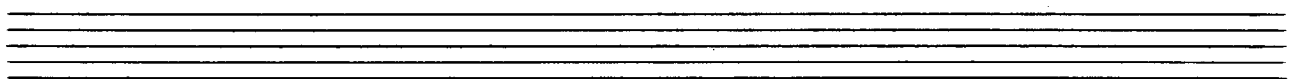
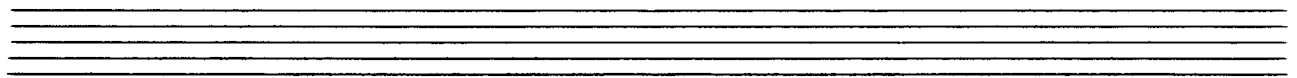
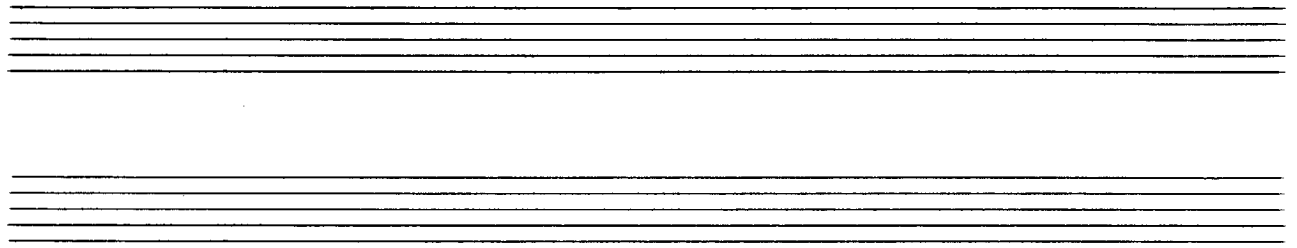
Handwritten musical notation for the first system, consisting of two staves. The upper staff contains a melodic line with several notes and rests, while the lower staff contains a bass line with notes and rests. The notation is in a simple, sketchy style.

Handwritten musical notation for the second system, consisting of two staves. The upper staff contains a melodic line with several notes and rests, while the lower staff contains a bass line with notes and rests. The notation is in a simple, sketchy style.

Handwritten musical notation for the third system, consisting of two staves. The upper staff contains a melodic line with several notes and rests, while the lower staff contains a bass line with notes and rests. The notation is in a simple, sketchy style. The system ends with a box containing the word "FINE" and a double bar line.

poco rit





Handwritten musical notation for two systems. The first system consists of two staves with various notes, rests, and accidentals. The second system also consists of two staves, ending with a double bar line. The notation is somewhat sketchy and includes some large curved lines.

D.C.
al
Fine