



Variation über Agnus Dei
(im alten Stil)

Handwritten musical score for two staves. The top staff is a treble clef and the bottom is a bass clef. The music is written in purple ink. It features a large slur over the first six measures. The notes are mostly quarter and eighth notes. There are some accidentals like a sharp sign and a flat sign. The piece ends with a double bar line and a fermata-like flourish.

Fantasie (alten Stil) über einen Choral

Handwritten musical notation for the first system, labeled "rasch". It features a treble clef with a circled sharp sign (#) and a bass clef. The music consists of a series of sixteenth-note runs in the treble clef, with a few notes in the bass clef. A large bracket spans the entire system.

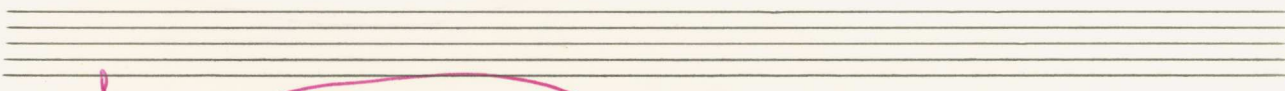
Handwritten musical notation for the second system, labeled "breit". It features a treble clef and a bass clef. The music consists of a series of notes in the treble clef, with a few notes in the bass clef. A large bracket spans the entire system.

Handwritten musical notation for the third system, labeled "rasch". It features a treble clef with a circled sharp sign (#) and a bass clef with a circled sharp sign (#). The music consists of a series of sixteenth-note runs in the treble clef, with a few notes in the bass clef. A large bracket spans the entire system.



breit

Handwritten musical notation for the first system. It consists of two staves. The upper staff is in treble clef and contains a half note with a flat (Bb), followed by a quarter note with a sharp (F#), and a dotted quarter note with a sharp (F#). The lower staff is in bass clef and contains a quarter note with a sharp (F#) and a dotted quarter note with a flat (Bb). A vertical line separates the two measures. To the right of the second measure, there are two chords: a C major chord (C-E-G) and a C minor chord (C-Eb-G). A fermata is placed over the C major chord.



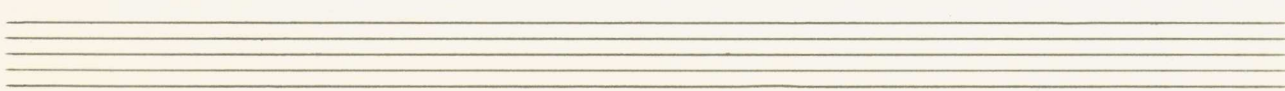
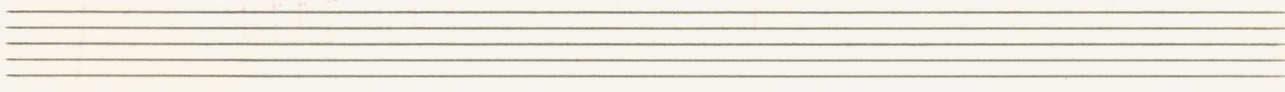
rasch

Handwritten musical notation for the second system. The upper staff is in treble clef and contains two measures of rapid sixteenth-note passages. The first measure is in G major (G-A-B-A-G-F-E-D) and the second is in G minor (G-A-B-A-G-F-E-D). The lower staff is in bass clef and contains a whole note G. A fermata is placed over the whole note G.



breit

Handwritten musical notation for the third system. The upper staff is in treble clef and contains a half note G, followed by a series of sixteenth-note passages: G-A-B-A-G-F-E-D, G-A-B-A-G-F-E-D, G-A-B-A-G-F-E-D, and G-A-B-A-G-F-E-D. The lower staff is in bass clef and contains a whole note G. A fermata is placed over the whole note G.



Handwritten musical notation in red ink. The top staff is empty. The second staff contains the tempo markings "poco rit." and "breit". The third staff shows a treble clef with a key signature of one sharp (F#) and a common time signature (C). The music consists of two measures, each featuring a series of eighth notes beamed together, with a fermata over the first measure. The notes are: G_4 , A_4 , B_4 , C_5 , B_4 , A_4 , G_4 in the first measure, and G_4 , A_4 , B_4 , C_5 , B_4 , A_4 , G_4 in the second measure. The bottom staff is empty.

Handwritten musical notation in red ink. The top staff is empty. The second staff contains the tempo marking "Maestoso". The third staff shows a treble clef with a key signature of one sharp (F#) and a common time signature (C). The music consists of two measures, each featuring a series of eighth notes beamed together, with a fermata over the first measure. The notes are: G_4 , A_4 , B_4 , C_5 , B_4 , A_4 , G_4 in the first measure, and G_4 , A_4 , B_4 , C_5 , B_4 , A_4 , G_4 in the second measure. The bottom staff is empty.

Handwritten musical notation in red ink. The top staff is empty. The second staff contains a treble clef with a key signature of one sharp (F#) and a common time signature (C). The music consists of two measures, each featuring a series of eighth notes beamed together, with a fermata over the first measure. The notes are: G_4 , A_4 , B_4 , C_5 , B_4 , A_4 , G_4 in the first measure, and G_4 , A_4 , B_4 , C_5 , B_4 , A_4 , G_4 in the second measure. The bottom staff is empty.

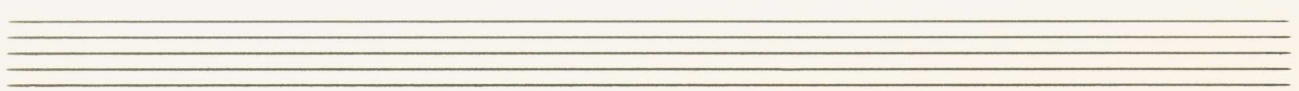
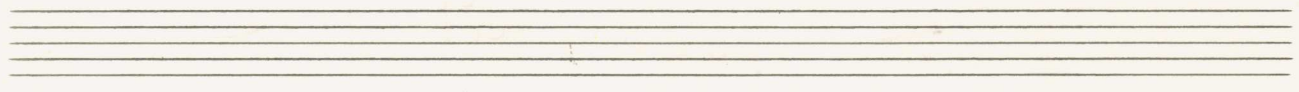
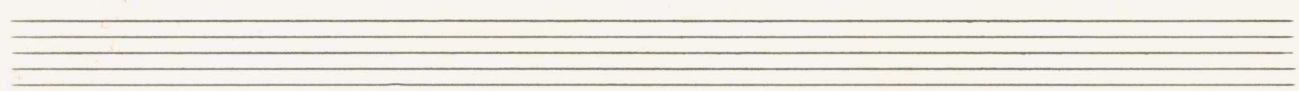
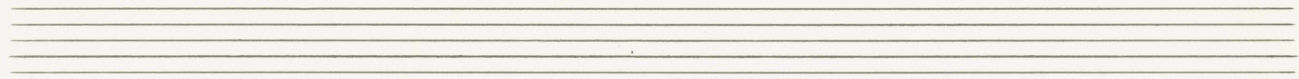
Handwritten musical notation for the first system. It consists of two staves. The upper staff is in treble clef and contains a whole note chord (F4, A4) followed by a whole note chord (D5, D4) with the word "rit." written above it. The lower staff is in bass clef and contains a sequence of notes: a whole note (C3), followed by eighth notes (G2, A2, B2, C3), and another sequence of eighth notes (G2, A2, B2, C3). There are large curved lines under the notes in both staves, possibly indicating phrasing or breath marks.

Handwritten musical notation for the second system. It consists of two staves. The upper staff is in treble clef and contains a whole note chord (F4, A4) followed by a melodic line starting with a quarter note (F4), then eighth notes (G4, A4, B4, C5), and ending with a quarter note (B4). The lower staff is in bass clef and contains a whole note chord (C3, E2) followed by a whole note chord (F2, A2). A circled 'p' (piano) dynamic marking is placed above the first measure of the lower staff. The word "quasi" is written above the second measure of the upper staff. A bracketed note below the staves reads: "beim 2. x ab hier schreibt 77 bis heute)".

Handwritten musical notation for the third system. It consists of two staves. The upper staff is in treble clef and contains a sequence of notes: a whole note (C4), followed by quarter notes (D4, E4, F4), and a half note (G4). The lower staff is in bass clef and contains a whole note chord (C3, E2) followed by a whole note chord (F2, A2). There are large curved lines under the notes in both staves.

The image displays a handwritten musical score on a page with four systems of staves. Each system consists of a treble clef staff on top and a bass clef staff on the bottom. The music is written in common time (C). The first system shows a melodic line in the treble staff with a common time signature and a slur over the first two measures. The bass staff contains a bass line with a common time signature and a slur over the first two measures. The second system continues the melodic line in the treble staff with a slur over the first four measures, and the bass staff has a bass line with a slur over the first four measures. The third system shows the melodic line in the treble staff with a slur over the first four measures, and the bass staff has a bass line with a slur over the first four measures. The fourth system shows the melodic line in the treble staff with a slur over the first four measures, and the bass staff has a bass line with a slur over the first four measures. The handwriting is in purple ink.

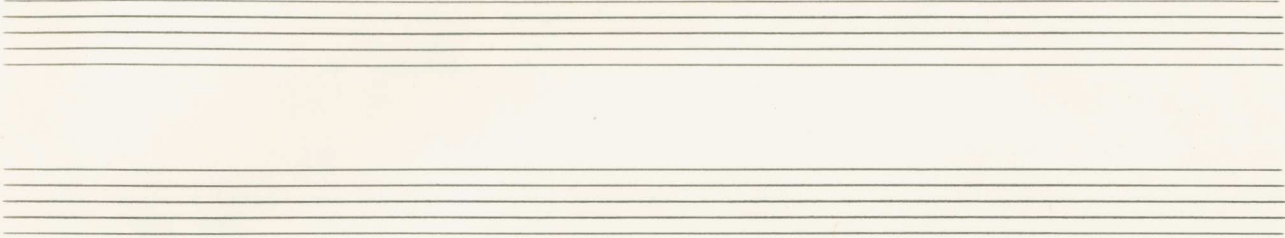
> poco rit <



Handwritten musical notation for the first system. It consists of two staves. The top staff is in treble clef and the bottom staff is in bass clef. The key signature has one flat (B-flat) and the time signature is common time (C). The notation includes a melodic line in the treble and a bass line with a 'COP' marking. A large purple bracket spans across both staves.

Handwritten musical notation for the second system. It consists of two staves. The top staff is in treble clef and the bottom staff is in bass clef. The key signature has one flat (B-flat) and the time signature is common time (C). The notation includes a melodic line in the treble and a bass line with a 'COP' marking. A large purple bracket spans across both staves.

Handwritten musical notation for the third system. It consists of two staves. The top staff is in treble clef and the bottom staff is in bass clef. The key signature has one flat (B-flat) and the time signature is common time (C). The notation includes a melodic line in the treble and a bass line with a 'COP' marking. A large purple bracket spans across both staves.



*D. C.
al
Fine*

