



Notenheft



2 Flöten

*Allegro*

*NOX Baum*  
*-D.C.*

1V

2V

Bu

CtB

Handwritten musical score for the first system, featuring four staves with treble and bass clefs, a key signature of one sharp (F#), and a 4/4 time signature. The notation includes various note values, rests, and accidentals.

Handwritten musical score for the second system, featuring five staves. The first two staves are labeled "1Fr." and "2Fr.". The bottom three staves are grouped with a brace and include the handwritten note "ohne Trielenbewegung?". The notation includes various note values, rests, and accidentals.

Handwritten musical score for a piece in G major, BWV 1759. The score consists of six staves. The top two staves are for the right hand, and the bottom four are for the left hand. The key signature has one sharp (F#) and the time signature is 4/4. The piece is in a simple, folk-like style with a clear melody and accompaniment. The first measure of the right hand starts with a quarter rest, followed by a dotted quarter note G4, and then eighth notes. The left hand provides a steady accompaniment with quarter notes and chords. The piece concludes with a final cadence in the right hand.

Handwritten musical score for a piece in D major, BWV 1759. The score consists of five staves. The first staff is the treble clef with a key signature of two sharps (F# and C#). The second staff is the alto clef with the same key signature. The third and fourth staves are grouped by a brace and represent the left hand, with the third staff in the treble clef and the fourth in the bass clef. The fifth staff is the bass clef. The music is divided into two measures by a vertical bar line. The first measure contains several chords and a melodic line. The second measure continues the piece with a 2/2 time signature indicated above the first staff. The notation includes various note values, rests, and dynamic markings like accents.



Handwritten musical score for a string quartet in D major, BWV 1759. The score is written on a system of five staves. The top two staves are for Violin I and Violin II, the middle two for Violin III and Violin IV, and the bottom staff is for the Cello/Double Bass. The music is in 4/4 time and consists of two measures. The first measure shows a melodic line in the first violin with a fermata over the final note, and a rhythmic accompaniment in the other parts. The second measure continues the melodic line with a fermata and includes some dynamic markings like 'p' and 'f'.

Handwritten musical score for a piece in G major, BWV 1759. The score is written on six staves. The top two staves are for the right hand, the middle two for the left hand, and the bottom two for the piano accompaniment. The piece is in 3/4 time and consists of two measures. The right hand plays a melodic line with grace notes and slurs. The left hand plays a bass line with grace notes. The piano accompaniment consists of simple chords and single notes.

Handwritten musical score for a string quartet in D major, BWV 1759. The score is written on five staves. The first staff is the Violin I part, the second is Violin II, the third is Viola, and the fourth and fifth are the Cello and Double Bass parts. The music is in 4/4 time and features a dynamic marking of 'f' (forte). The score shows a melodic line in the first violin with a trill-like figure, and sustained harmonic lines in the other instruments. There are various musical notations including slurs, accents, and dynamic markings.



Handwritten musical score for a piece in D major, BWV 1759. The score is written on a grand staff with two treble clefs and two bass clefs. The first system shows the beginning of the piece with a treble clef and a key signature of two sharps (D major). The second system continues the piece. The notation includes various rhythmic values, accidentals, and articulation marks. The piece concludes with a final cadence in the second system.

Handwritten musical score for a piece in D major, BWV 1759. The score consists of six staves. The top two staves are for the right hand, and the bottom four are for the left hand. The music features a rhythmic pattern of eighth notes and quarter notes, with various ornaments and dynamics. The piece concludes with a fermata on a whole note.

Handwritten musical score for a string quartet, consisting of six staves. The music is written in treble clef with a key signature of two sharps (F# and C#). The score is divided into two measures by a vertical bar line. The first measure contains several notes with stems, some beamed together, and dynamic markings including 'p' and '<'. The second measure continues the melodic lines with similar notation. The lower staves (3, 4, 5, and 6) feature long, horizontal lines with circular notes, suggesting sustained or glissando passages. The notation is fluid and appears to be a working draft.

Handwritten musical score for six staves. The top staff contains a melodic line with notes and slurs, including dynamic markings like 'v' and '^'. The lower five staves contain bass lines with notes, slurs, and fingering numbers (37, 34). The music is in a key with two sharps (F# and C#).

Handwritten musical score for a string quartet, featuring six staves. The score is written in treble clef with a key signature of two sharps (F# and C#). The notation includes various note values, rests, and dynamic markings such as *f* (forte) and *mf* (mezzo-forte). The first two staves show melodic lines with slurs and ties. The third staff contains quarter notes with slurs. The fourth staff features a sequence of notes with slurs. The fifth and sixth staves consist of whole notes with slurs. The score is divided into two measures by a vertical bar line.



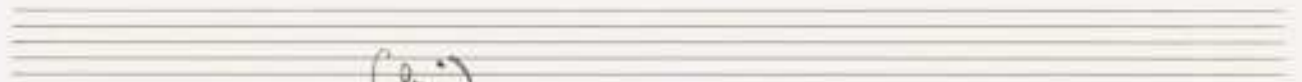
Handwritten musical score for six staves, likely for a piano or similar instrument. The music is written in G major (one sharp) and 3/4 time. The score is divided into two measures by a vertical bar line. The first measure contains dense, rhythmic patterns with many notes, while the second measure features more melodic and harmonic development. The notation includes various note values, rests, and dynamic markings such as accents and slurs. The staves are numbered 1 through 6 from top to bottom.

Handwritten musical score for six staves, divided into two systems by a vertical bar line. The notation includes treble clefs, a key signature of one sharp (F#), and a 4/4 time signature. The first staff features a melodic line with eighth-note runs and slurs. The second staff continues this melodic line. The third staff has a more rhythmic, dotted-note pattern. The fourth staff continues the rhythmic pattern. The fifth staff consists of sustained notes with slurs. The sixth staff consists of sustained notes with slurs. There are various musical markings such as slurs, accents, and dynamic markings (e.g., 'v') throughout the score.

Adagio

Handwritten musical score for Adagio. The score is written on a grand staff with a piano (p) part on the left and a violin part on the right. The key signature is two sharps (F# and C#), and the time signature is common time (C). The piano part consists of six staves, with the first two staves grouped by a brace. The violin part consists of three staves. The score is divided into three measures. The first measure shows the piano part with a series of chords and the violin part with a single note. The second measure shows the piano part with a series of chords and the violin part with a single note. The third measure shows the piano part with a series of chords and the violin part with a series of notes.

Handwritten musical score for a piece in D major, BWV 1759. The score is written on six staves. The first two staves are for the right hand (treble clef), and the last four are for the left hand (bass clef). The music is in 3/4 time. The first two measures show rests for the right hand and rhythmic patterns for the left hand. The third measure features a melodic line in the right hand and a sustained bass line in the left hand.



(frei)

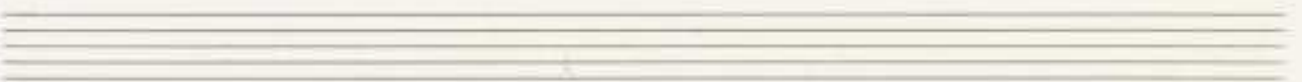
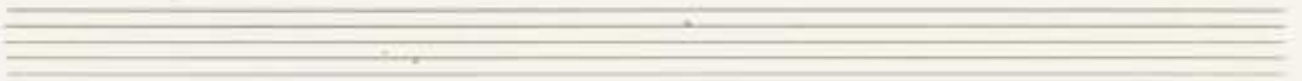
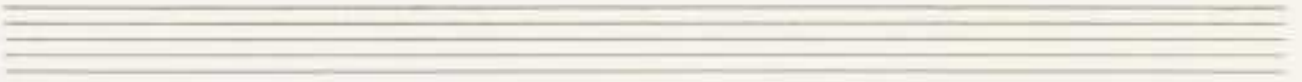


$\textcircled{p}$   $\curvearrowright$

$\textcircled{p}$   $\curvearrowright$

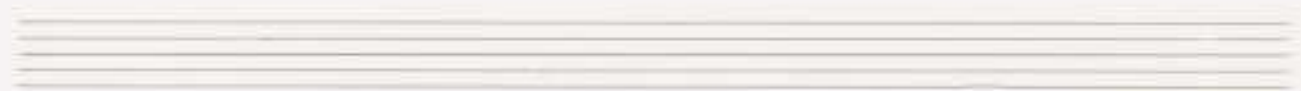


D.C.









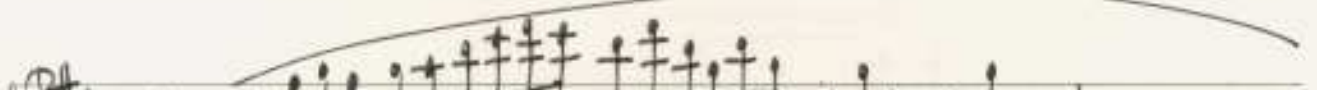
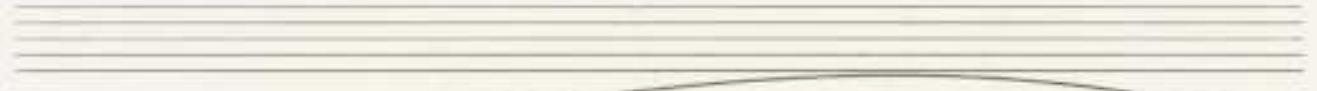
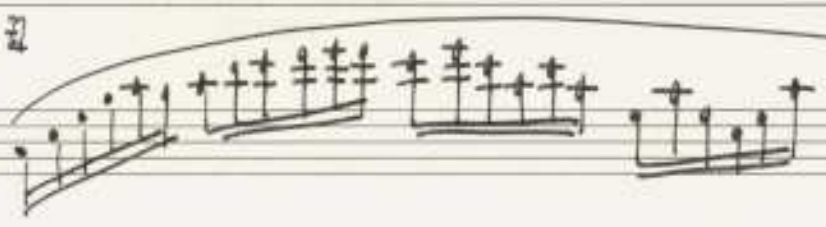
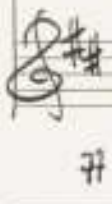


meno

$\phi$   
|||



$\phi$



$\phi$   
|||



$\phi$   
|||



2FR. *Tempo 1.*

Lento

FINE

The image shows a handwritten musical score for four staves. The key signature is G major (one sharp). The tempo is marked 'Lento'. The score is divided into two measures by a vertical bar line. The first measure contains the following notes: Staff 1 (treble clef): G4, A4, B4, G4, F4, E4; Staff 2 (treble clef): G4, A4, B4, C5, B4, A4; Staff 3 (bass clef): G3, A3, B3, C4; Staff 4 (bass clef): G3, A3, B3, C4. The second measure contains: Staff 1: G4, A4, B4, C5, B4, A4; Staff 2: G4, A4, B4, C5, B4, A4; Staff 3: G4, A4, B4, C5; Staff 4: G4, A4, B4, C5. The piece concludes with a 'FINE' box at the end of the second measure.