

L.v. BEETHOVEN



W.A. MOZART



NOTENHEFT

F. SCHUBERT



J. HAYDN



J. STRAUSS



Allegro (energico)

ORCHESTER

(STREICHER)

①

②

(in F) Solo

Handwritten musical score for the first system. The top staff is for the horn, marked **ff** (fortissimo). The bottom two staves are for the piano accompaniment, marked **f** (forte). The music consists of three measures. The horn part has notes with accents (^) and slurs. The piano accompaniment features a rhythmic pattern of eighth notes and quarter notes.

Handwritten musical score for the second system. The top staff continues the horn part with notes and accents. The piano accompaniment continues with a similar rhythmic pattern. A triplet of eighth notes is marked with a '3' above it in the second measure.

Handwritten musical score for the third system. The top staff concludes the horn part with a final note and a wavy line above it. The piano accompaniment concludes with a final chord and a wavy line below it.

③

Handwritten musical score for exercise 3. It consists of three staves: a treble clef staff with a sharp sign, a piano staff, and a bass staff. The piano staff contains a melodic line with accents and slurs. The bass staff contains a bass line with slurs and dynamic markings like 'f'.

④

Handwritten musical score for exercise 4. It consists of three staves: a treble clef staff with a flat sign, a piano staff, and a bass staff. The piano staff contains a melodic line with accents and slurs. The bass staff contains a bass line with slurs and dynamic markings like 'f'.

⑤

Handwritten musical score for exercise 5. It consists of three staves: a treble clef staff with a 'f' dynamic marking, a piano staff, and a bass staff. The piano staff contains a melodic line with slurs and dynamic markings like 'p'. The bass staff contains a bass line with slurs and dynamic markings like 'p'.

Handwritten musical score for the first system. It consists of three staves: a single treble clef staff at the top, and a grand staff (treble and bass clefs) below. The top staff begins with a treble clef, a key signature of one sharp (F#), and a 3/4 time signature. The first measure contains a quarter note G4, followed by a quarter rest, and then a quarter note A4. A slur covers the next two measures, which contain a quarter note B4 and a quarter note C5. A dynamic marking 'cresc.' is written below the first measure. A fermata is placed over the C5 note. The second measure of the fermata is marked with a forte 'f' dynamic. The system concludes with a double bar line.

Handwritten musical score for the second system. It consists of three staves: a single treble clef staff at the top, and a grand staff (treble and bass clefs) below. The top staff begins with a treble clef, a key signature of one sharp (F#), and a 3/4 time signature. The first measure contains a quarter note G4, followed by a quarter note A4, and a quarter note B4, all with accents (^). The second measure contains a quarter note C5, followed by a quarter note B4, and a quarter note A4, all with accents (^). The system concludes with a double bar line.

Handwritten musical score for the third system. It consists of three staves: a single treble clef staff at the top, and a grand staff (treble and bass clefs) below. The top staff begins with a treble clef, a key signature of one sharp (F#), and a 3/4 time signature. The first measure contains a quarter note G4, followed by a quarter note A4, and a quarter note B4, all with accents (^). The second measure contains a quarter note C5, followed by a quarter note B4, and a quarter note A4, all with accents (^). The system concludes with a double bar line.

6

7

8

Handwritten musical score for the first system. It consists of three staves. The top staff is in treble clef and contains a melodic line with a long slur over the first two measures, a fermata in the second measure, and a final note in the third measure. The middle staff is in treble clef and contains a series of chords, with a fermata over the first two measures. The bottom staff is in bass clef and contains a series of notes, with a fermata over the first two measures. There are various performance markings such as accents, slurs, and fermatas throughout the system.

Handwritten musical score for the second system. It consists of three staves. The top staff is in treble clef and contains a melodic line with a long slur over the first two measures, a fermata in the second measure, and a final note in the third measure. The middle staff is in treble clef and contains a series of chords, with a fermata over the first two measures. The bottom staff is in bass clef and contains a series of notes, with a fermata over the first two measures. There are various performance markings such as accents, slurs, and fermatas throughout the system.

Handwritten musical score for the third system. It consists of three staves. The top staff is in treble clef and contains a melodic line with a long slur over the first two measures, a fermata in the second measure, and a final note in the third measure. The middle staff is in treble clef and contains a series of chords, with a fermata over the first two measures. The bottom staff is in bass clef and contains a series of notes, with a fermata over the first two measures. There are various performance markings such as accents, slurs, and fermatas throughout the system.

Handwritten musical score for the first system. The treble clef staff contains a melodic line with a triplet of eighth notes. The bass clef staff contains a chordal accompaniment with various chords and dynamics. There are dynamic markings like 'p' and 'f' and various articulation marks.

Handwritten musical score for the second system. The treble clef staff contains a melodic line with a series of chords. The bass clef staff contains a chordal accompaniment with various chords and dynamics. There are dynamic markings like 'p' and 'f' and various articulation marks.

Handwritten musical score for the third system. The treble clef staff contains a melodic line with a series of chords. The bass clef staff contains a chordal accompaniment with various chords and dynamics. There are dynamic markings like 'p' and 'f' and various articulation marks.

(Kadenz) ganz frei

Handwritten musical score for the first system of a cadenza. It features a treble clef staff at the top, followed by a grand staff (violin and viola) with dynamic markings 'p' and 'f'. The notes are replaced by long, sweeping blue lines representing glissandi or sustained tones.

Handwritten musical score for the second system of a cadenza. Similar to the first system, it shows a treble clef staff and a grand staff with dynamic markings 'p' and 'f', with notes replaced by long blue lines.

Handwritten musical score for the third system of a cadenza. It includes a treble clef staff and a grand staff with dynamic markings 'p' and 'f'. The system concludes with a double bar line, a fermata, and the instruction 'D.C. al' followed by a repeat sign.

♩ Coda

(probes out)

Finis

Lunga

Satz [1]

[2]

Lento (♩)

Handwritten musical score for the first system. It consists of three staves: treble clef (top), piano (middle), and bass clef (bottom). The treble staff contains a melodic line with slurs and accents, starting with a dynamic marking of f . The piano staff contains a supporting line with slurs and accents, starting with a circled p . The bass staff contains a rhythmic accompaniment of eighth notes, starting with a dynamic marking of pp . Vertical bar lines separate the measures.

Handwritten musical score for the second system. It consists of three staves: treble clef (top), piano (middle), and bass clef (bottom). The treble staff contains a melodic line with slurs and accents, starting with a dynamic marking of pp . The piano staff contains a supporting line with slurs and accents. The bass staff contains a rhythmic accompaniment of eighth notes, starting with a dynamic marking of pp . Vertical bar lines separate the measures.

Handwritten musical score for the third system. It consists of three staves: treble clef (top), piano (middle), and bass clef (bottom). The treble staff contains a melodic line with slurs and accents, ending with a first ending (marked with a circled 1) and a second ending (marked with a circled 2). The piano staff contains a supporting line with slurs and accents. The bass staff contains a rhythmic accompaniment of eighth notes, starting with a dynamic marking of pp . Vertical bar lines separate the measures.

2

Handwritten musical score for the second measure. It features a treble clef with a 9/8 time signature and a forte (ff) dynamic marking. The right hand plays a melodic line with slurs and accidentals (flats and naturals). The left hand plays a bass line with a circled '74' and various rhythmic markings. The measure is divided into two parts by a bar line.

Handwritten musical score for the third measure. It features a treble clef with a key signature of one sharp (F#) and a forte (ff) dynamic marking. The right hand plays a melodic line with slurs and accidentals. The left hand plays a bass line with slurs and accidentals. The measure is divided into two parts by a bar line.

3

Handwritten musical score for the fourth measure. It features a treble clef with a piano (p) dynamic marking. The right hand plays a melodic line with slurs and accidentals. The left hand plays a bass line with slurs and accidentals. The measure is divided into two parts by a bar line.

Handwritten musical score for the first system. The treble clef staff contains a melodic line with a dynamic marking **f** and a slur over the notes. The bass clef staff contains accompaniment with a dynamic marking **ff** and a slur over the notes.

Handwritten musical score for the second system. The treble clef staff contains a melodic line with a dynamic marking **ff** and a slur over the notes. The bass clef staff contains accompaniment with a dynamic marking **ff** and a slur over the notes.

Handwritten musical score for the third system. The treble clef staff contains a melodic line with a dynamic marking **ff** and a slur over the notes. The bass clef staff contains accompaniment with a dynamic marking **ff** and a slur over the notes. A circled number **4** is written at the end of the system.

(sehr breit)

(5)

(poco rit.....)

Handwritten musical score for the first system. It consists of three staves. The top staff begins with a circled '2' and a 'pp' dynamic marking. The middle and bottom staves contain rhythmic patterns and notes, with '49' written below them. The system is divided into two measures by a vertical bar line.

Handwritten musical score for the second system. It consists of three staves. The top staff has a circled 'f' dynamic marking. The middle and bottom staves contain notes and rests, with '49' written below them. The system is divided into two measures by a vertical bar line.

Handwritten musical score for the third system. It consists of three staves. The top staff has a circled 'f' dynamic marking and the text '(reit + dän)' written above it. The middle and bottom staves contain notes and rests, with '49' written below them. The system is divided into two measures by a vertical bar line.

Handwritten musical score for three staves. The top staff has a treble clef and a key signature of one flat. It contains a whole note chord with notes G, B \flat , and D, and the number "77 999" written above it. The middle staff has a treble clef and contains a whole note chord with notes G, B \flat , and D. The bottom staff has a bass clef and contains a whole note chord with notes G, B \flat , and D. There are various annotations including circled "P" marks, a "Fine" marking with a wavy line, and "Setz [2]" in a box. Dynamics markings include "> pp" and "lunga".

Presto

(3)

Handwritten musical notation for the first system. It features a treble clef and a 12/16 time signature. The music is written on two staves. The upper staff contains a melodic line with notes and rests, including a triplet of eighth notes. The lower staff contains a bass line with notes and rests, including a triplet of eighth notes. There are dynamic markings such as accents (^) and a forte (f) marking. The system is divided into three measures by vertical bar lines.

Handwritten musical notation for the second system. It features a treble clef and is written on two staves. The music continues from the first system, with notes and rests on both staves. There are dynamic markings such as accents (^) and a forte (f) marking. The system is divided into three measures by vertical bar lines. A circled number '1' is written above the second measure of the upper staff.

Handwritten musical notation for the first system. It consists of a treble clef staff and a bass clef staff. The key signature has one flat (B-flat). The time signature is 3/4. The melody in the treble clef starts with a quarter rest, followed by a series of eighth notes with slurs and accents. The bass line consists of a quarter rest, followed by a series of eighth notes and a final note with an accent.

Handwritten musical notation for the second system. It includes a circled '2' in the upper right corner, indicating a second ending. The notation features a treble clef staff and a bass clef staff. The key signature has one flat (B-flat). The time signature is 3/4. The melody in the treble clef starts with a quarter rest, followed by a series of eighth notes with slurs and accents. The bass line consists of a quarter rest, followed by a series of eighth notes and a final note with an accent.

Handwritten musical notation for the third system. It consists of a treble clef staff and a bass clef staff. The key signature has one flat (B-flat). The time signature is 3/4. The melody in the treble clef starts with a quarter rest, followed by a series of eighth notes with slurs and accents. The bass line consists of a quarter rest, followed by a series of eighth notes and a final note with an accent.

Handwritten musical score for the first system. It consists of three staves. The top staff has a treble clef and contains several quarter notes with accents (^) and some beamed notes. The middle staff has a treble clef and contains groups of beamed eighth notes, some with slurs and dynamic markings like f. The bottom staff has a bass clef and contains quarter notes with accents (^) and dynamic markings like f.

Handwritten musical score for the second system. It consists of three staves. The top staff has a treble clef and contains quarter notes with accents (^) and a 'dim' marking. The middle staff has a treble clef and contains groups of beamed eighth notes with slurs and dynamic markings like f. The bottom staff has a bass clef and contains quarter notes with dynamic markings like f.

Handwritten musical score for the third system. It consists of three staves. The top staff has a treble clef and contains quarter notes with accents (^) and a circled '3' above a measure. The middle staff has a treble clef and contains groups of beamed eighth notes with slurs and dynamic markings like f. The bottom staff has a bass clef and contains quarter notes with dynamic markings like f.

Handwritten musical score for the first system, consisting of three measures. The notation includes treble and bass staves with various notes, rests, and dynamic markings. A circled number '4' is written above the second measure. The first measure has a treble clef and a sharp sign (F#) above the staff. The second measure has a treble clef and a sharp sign (F#) above the staff. The third measure has a treble clef and a flat sign (Bb) above the staff. The bass staff in all measures has a flat sign (Bb) above the staff.

Handwritten musical score for the second system, consisting of three measures. The notation includes treble and bass staves with various notes, rests, and dynamic markings. The first measure has a treble clef and a circled 'p' (piano) marking. The second measure has a treble clef and a circled 'p' (piano) marking. The third measure has a treble clef and a circled 'p' (piano) marking. The bass staff in all measures has a flat sign (Bb) above the staff.

Handwritten musical score for the third system, consisting of three measures. The notation includes treble and bass staves with various notes, rests, and dynamic markings. The first measure has a treble clef and a sharp sign (F#) above the staff. The second measure has a treble clef and a sharp sign (F#) above the staff. The third measure has a treble clef and a sharp sign (F#) above the staff. The bass staff in all measures has a flat sign (Bb) above the staff.

Handwritten musical score for the first system. It consists of three staves: a treble clef staff at the top and two bass clef staves below it. The treble staff begins with a circled 'f' dynamic marking. The notation includes notes, rests, and slurs across two measures.

Handwritten musical score for the second system. It consists of three staves: a treble clef staff at the top and two bass clef staves below it. The notation includes notes, rests, and slurs across two measures.

Handwritten musical score for the third system. It consists of three staves: a treble clef staff at the top and two bass clef staves below it. The notation includes notes, rests, slurs, and dynamic markings such as 'ff' and 'f'. The system concludes with a circled '2.' marking.

Handwritten musical score for the first system, consisting of three staves. The top staff contains several notes with stems and beams, followed by a boxed-in section with a circled sharp sign and a circled '5'. The middle and bottom staves feature complex chordal structures with various accidentals (sharps, flats, naturals) and accents. A circled sharp sign is also present in the bottom staff.

Handwritten musical score for the second system, consisting of two staves. The top staff shows a sequence of notes with stems and beams, including a circled sharp sign. The bottom staff features a rhythmic pattern of notes with stems and beams, also including a circled sharp sign.

Handwritten musical score for the third system, consisting of two staves. The top staff shows a sequence of notes with stems and beams, including a circled sharp sign. The bottom staff features a rhythmic pattern of notes with stems and beams, also including a circled sharp sign.

Handwritten musical notation for the first system. The top staff (treble clef) contains a melodic line with notes marked with accents (^) and a flat sign (b). The bottom staff (bass clef) contains accompaniment with notes and rests. The system is divided into two measures by a vertical bar line.

Handwritten musical notation for the second system. A circled number '7' is written in the upper right corner. The top staff (treble clef) contains a melodic line with notes marked with accents (^). The bottom staff (bass clef) contains accompaniment with notes and rests. The system is divided into two measures by a vertical bar line.

Handwritten musical notation for the third system. The top staff (treble clef) contains a melodic line with notes marked with accents (^). The bottom staff (bass clef) contains accompaniment with notes and rests. The system is divided into two measures by a vertical bar line.

cresc.

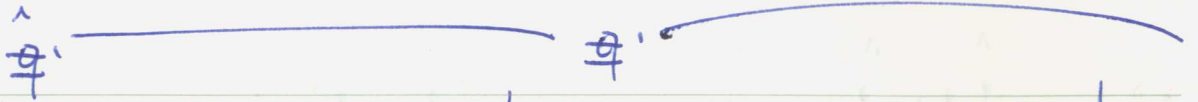
Handwritten musical notation for the first system. The top staff (treble clef) contains three notes with accents (^) above them. The middle and bottom staves (alto and bass clefs) contain chords and eighth notes. The system is divided into two measures by a vertical bar line.

Handwritten musical notation for the second system. The top staff (treble clef) contains wavy lines above notes. The middle and bottom staves (alto and bass clefs) contain chords and eighth notes. The system is divided into two measures by a vertical bar line.

Handwritten musical notation for the third system. The top staff (treble clef) contains a sharp sign (#) and a circled number 8. The middle and bottom staves (alto and bass clefs) contain chords and eighth notes. The system ends with a double bar line and a box containing the text "2. + D.C. al".



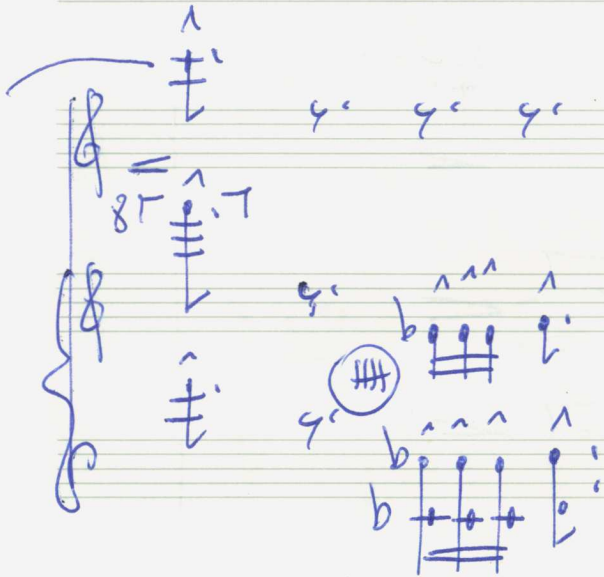
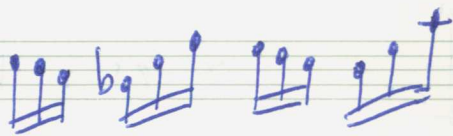
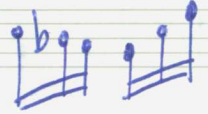
CODA



777

4^c 4^c
777
4^c 4^c

8r



Ende



Satz 3