

Teil 1

sehr niedrig (auf 6)

Teil [2]

Sehr ruhig

Handwritten musical score for the first system, measures 1-4. It features a treble and bass clef with a key signature of one sharp (F#). The music consists of chords and some melodic fragments. A circled '1' is at the end of the system.

Handwritten musical score for the second system, measures 5-8. It features a treble and bass clef with a key signature of one sharp (F#). The music consists of chords and some melodic fragments. A circled '2' is at the end of the system.

Handwritten musical score for the third system, measures 9-12. It features a treble and bass clef with a key signature of one sharp (F#). The music consists of chords and some melodic fragments. A circled '3' is at the end of the system.

Teil 4

fortissimo (so rasch als möglich)

Handwritten musical notation for the first system. It features a grand staff with a treble clef on the upper staff and a bass clef on the lower staff. The time signature is 3/8. The piece begins with a dynamic marking of *pp* and a tempo marking of *3* (triple). The notation includes eighth notes, quarter notes, and rests. A circled number 1 is placed above the first measure of the second staff.

Handwritten musical notation for the second system, consisting of two staves. The upper staff has a treble clef and the lower staff has a bass clef. The notation includes eighth notes, quarter notes, and rests. A circled number 2 is placed above the first measure of the upper staff.

Handwritten musical notation for the third system, consisting of two staves. The upper staff has a treble clef and the lower staff has a bass clef. The notation includes eighth notes, quarter notes, and rests. A circled number 3 is placed above the first measure of the upper staff.

Handwritten musical notation for the fourth system, consisting of two staves. The upper staff has a treble clef and the lower staff has a bass clef. The notation includes eighth notes, quarter notes, and rests. A circled number 4 is placed above the first measure of the upper staff. The system concludes with a dynamic marking of *pp* and a fermata over the final notes. The letters "D.C." are written to the right of the system.

Teil 5

fres
pesante (hant)

fff

ff

1

Prestissimo

P

sempre cresc.

1

mf

cresc.

2

3

Handwritten musical score for system 3, measures 1-4. Treble clef, key signature of one sharp (F#). The right hand has a melodic line with accents and slurs. The left hand has a bass line with a triplet in measure 2.

4

Handwritten musical score for system 4, measures 5-8. Treble clef, key signature of one sharp (F#). The right hand continues the melodic line. The left hand has a bass line with a triplet in measure 5.

5

Handwritten musical score for system 5, measures 9-12. Treble clef, key signature of one sharp (F#). The right hand has a melodic line with a triplet in measure 9. The left hand has a bass line with a triplet in measure 9.

6

2. + kl. G.P.

2. 1/2 + od Fin

Fin

Handwritten musical score for system 6, measures 13-16. Treble clef, key signature of one sharp (F#). The right hand has a melodic line with accents and slurs. The left hand has a bass line with a triplet in measure 13. The system ends with a fermata and the instruction "2. + kl. G.P.".

Teil [6]

sehr ruhig
(langsam)

Teil 7

sehr ruhig (sehr langsam) (auf Floß)

1

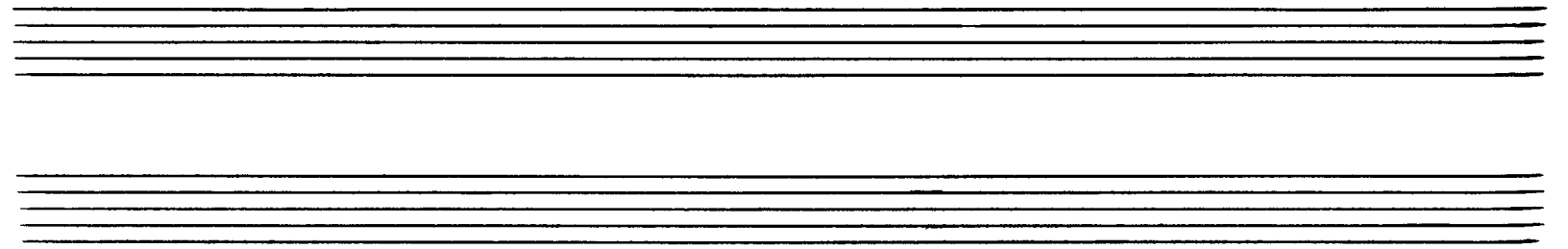
Teil 8

Presto (sempre fff)

hart

1

2



3

bart.

4

5

III

Pedal

6455

lange

F#m

Teil [9]

Reich schreiben

(alles sehr frei)

Handwritten musical notation for the first system, measures 1-4. It features a treble and bass clef with a 4/4 time signature. The treble staff contains a melodic line starting with a circled 'p' dynamic marking. The bass staff contains a bass line with various chords and accidentals. A circled '1' is at the end of the system.

Handwritten musical notation for the second system, measures 5-8. It continues the melodic and bass lines from the first system. The treble staff has a circled '2' at the beginning. The bass staff has a circled '2' at the beginning. A circled '2' is at the end of the system.

Handwritten musical notation for the third system, measures 9-12. It features a long melodic line in the treble staff with a circled '2' at the beginning and a circled '3' at the end. The bass staff has a circled '2' at the beginning and a circled '3' at the end. The notation includes a 'Pedal' marking and a 'ppp' dynamic marking.

Handwritten musical notation for measure 4. The staff is in treble clef with a key signature of one flat (B-flat). The tempo marking is *frei*. The dynamic marking is *pp*. The notation includes a series of chords and melodic lines with slurs and accents. A circled number '4' is in the top right corner.

Handwritten musical notation for measure 5. The staff is in treble clef with a key signature of one flat. The notation includes chords and melodic lines with slurs and accents. A boxed number '5' is in the top right corner.

Handwritten musical notation for measure 6. The staff is in treble clef with a key signature of one flat. The tempo marking is *frei*. The dynamic marking is *pp*. The notation includes chords and melodic lines with slurs and accents. A boxed number '6' is in the top right corner. The word *Fin* is written at the end of the measure. Below the staff, there is a handwritten instruction: *Gröb. rit + dim.....*. Dynamic markings *mf* and *ppp* are also present.

Teil 10

sehr rasch (auf 1 Schlag)

Handwritten musical score for the first system. It consists of two staves: a treble clef staff and a bass clef staff. The treble staff contains a 3/4 time signature and a '3' indicating a triplet. The bass staff contains a '3' and the instruction '(motorisch)'. The music features complex rhythmic patterns with triplets and dynamic markings such as 'fff' and 'sehr hart'. There are also various accidentals and slurs throughout the piece.

Handwritten musical score for the second system. It consists of two staves: a treble clef staff and a bass clef staff. The treble staff has five measures, each with a bracketed number (1, 2, 3, 4, 5) above it. The bass staff has five measures, each with a downward-pointing arrow below it. A boxed letter 'A' is located at the end of the system.

Handwritten musical score for the third system. It consists of two staves: a treble clef staff and a bass clef staff. The treble staff contains a 4/4 time signature and a '3' indicating a triplet. The bass staff contains a '3' and a '3' indicating a triplet. The music features complex rhythmic patterns with triplets and various accidentals. A boxed letter 'B' is located at the end of the system.

Handwritten musical notation for the first system. The top staff is in treble clef and the bottom staff is in bass clef. The key signature has one sharp (F#). The first measure contains a chord with notes F#, A, C, E, G. The second measure contains a triplet of notes: F#, A, C. The third measure contains a chord with notes F#, A, C, E, G. The fourth measure contains a triplet of notes: F#, A, C. The fifth measure contains a chord with notes F#, A, C, E, G. The sixth measure contains a triplet of notes: F#, A, C. The seventh measure contains a chord with notes F#, A, C, E, G. The eighth measure contains a triplet of notes: F#, A, C. The notation includes various accidentals, stems, and beams.

Handwritten musical notation for the second system, consisting of two empty staves. The measures are numbered 1 through 5. A circled letter 'C' is written in the top right corner of the system.

Handwritten musical notation for the third system. The top staff is in treble clef and the bottom staff is in bass clef. The key signature has one sharp (F#). The first measure contains a chord with notes F#, A, C, E, G. The second measure contains a triplet of notes: F#, A, C. The third measure contains a chord with notes F#, A, C, E, G. The fourth measure contains a triplet of notes: F#, A, C. The fifth measure contains a chord with notes F#, A, C, E, G. The sixth measure contains a triplet of notes: F#, A, C. The seventh measure contains a chord with notes F#, A, C, E, G. The eighth measure contains a triplet of notes: F#, A, C. The notation includes various accidentals, stems, and beams. A circled letter 'D' is written in the top right corner of the system.

Handwritten musical notation for the fourth system. The top staff is in treble clef and the bottom staff is in bass clef. The key signature has one sharp (F#). The first measure contains a chord with notes F#, A, C, E, G. The second measure contains a triplet of notes: F#, A, C. The third measure contains a chord with notes F#, A, C, E, G. The fourth measure contains a triplet of notes: F#, A, C. The fifth measure contains a chord with notes F#, A, C, E, G. The sixth measure contains a triplet of notes: F#, A, C. The seventh measure contains a chord with notes F#, A, C, E, G. The eighth measure contains a triplet of notes: F#, A, C. The notation includes various accidentals, stems, and beams. A circled letter 'E' is written in the top right corner of the system. A handwritten note in German reads: "(auf jedem Fall wiederholen)".

E *caprice charc. (hart)* 12 **F**

12 **G**

12 **H**