

Notenheft

Handlung

Alte

Handlung

Handlung

Handlung

Handlung

John King

Violin I
Musical staff with treble clef, key signature of one sharp (F#), and time signature of 3/4. The staff contains a few notes in the first measure.

Violin II
Musical staff with treble clef, key signature of one sharp (F#), and time signature of 3/4. The staff contains a few notes in the first measure.

Viola
Musical staff with alto clef, key signature of one sharp (F#), and time signature of 3/4. The staff contains a few notes in the first measure.

Cello
Musical staff with bass clef, key signature of one sharp (F#), and time signature of 3/4. The staff contains a few notes in the first measure.

Double Bass
Musical staff with bass clef, key signature of one sharp (F#), and time signature of 3/4. The staff contains a few notes in the first measure.

Piano
Musical staff with grand staff (treble and bass clefs), key signature of one sharp (F#), and time signature of 3/4. The staff contains a few notes in the first measure.

Violin I
Musical staff with treble clef, key signature of one sharp (F#), and time signature of 3/4. This staff contains a full musical score with notes, rests, and dynamic markings.

Violin II
Musical staff with treble clef, key signature of one sharp (F#), and time signature of 3/4. This staff contains a full musical score with notes, rests, and dynamic markings.

Viola
Musical staff with alto clef, key signature of one sharp (F#), and time signature of 3/4. This staff contains a full musical score with notes, rests, and dynamic markings.

Cello
Musical staff with bass clef, key signature of one sharp (F#), and time signature of 3/4. This staff contains a full musical score with notes, rests, and dynamic markings.

Sonata - wie möglich - unspirallos -

Handwritten musical notation for the first system, featuring a treble clef and a series of notes with slurs and dynamics.

Handwritten musical notation for the second system, including a treble clef, notes, and a large slur.

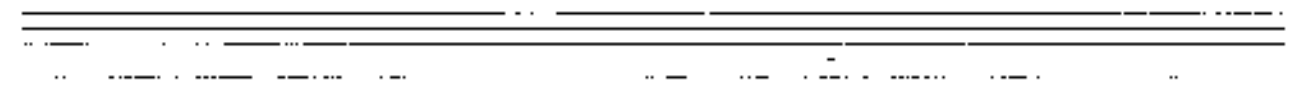
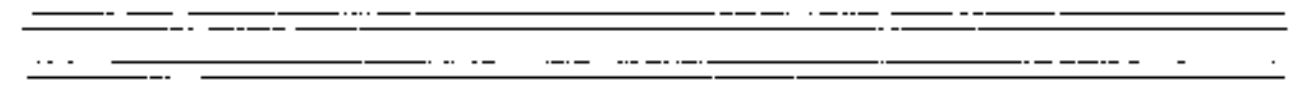
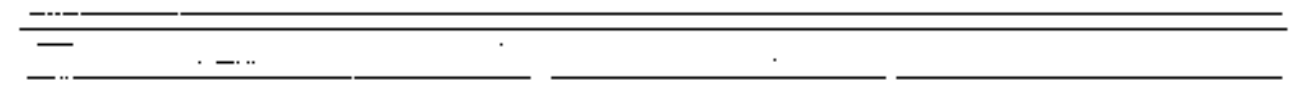
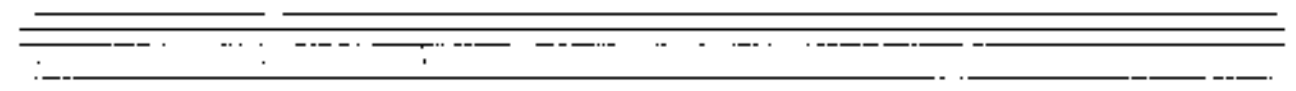
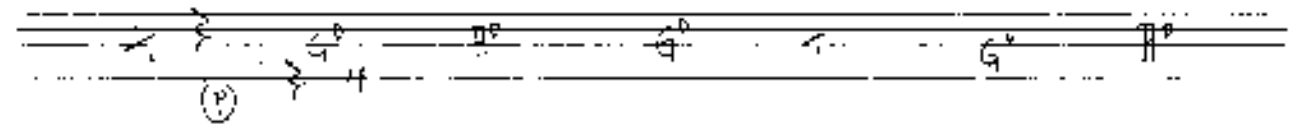
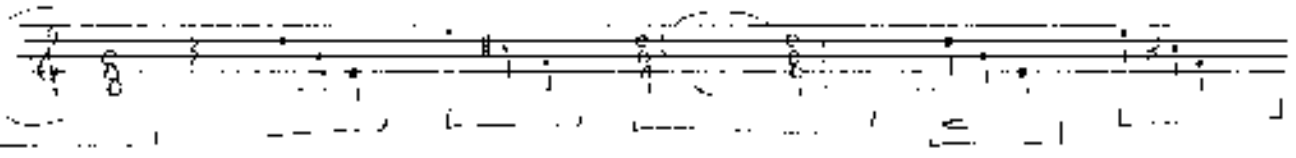
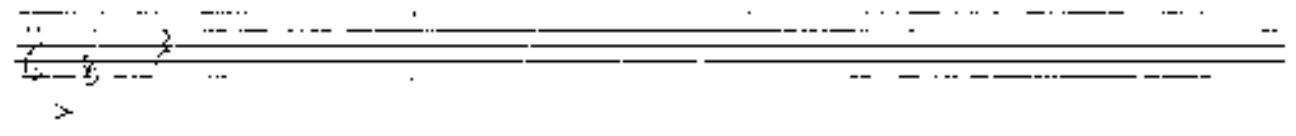
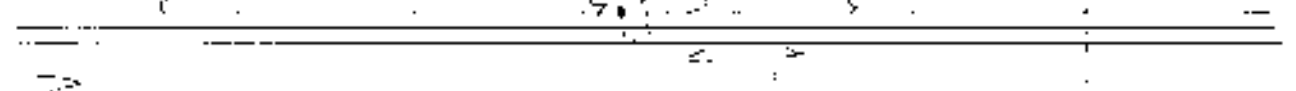
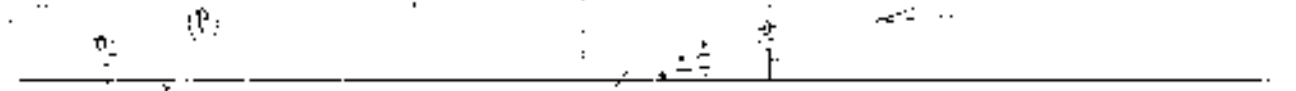
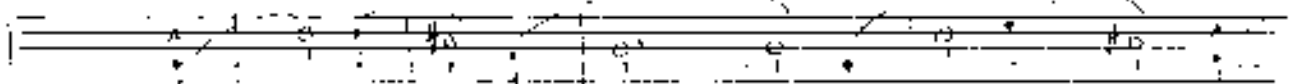
Handwritten musical notation for the third system, featuring a treble clef and notes with slurs.

Handwritten musical notation for the fourth system, including a treble clef, notes, and dynamics like *p* and *pp*.

Handwritten musical notation for the fifth system, featuring a treble clef and notes with slurs.

Empty musical staves for the sixth and seventh systems.

Handwritten text in a cursive script, possibly a signature or a note, located below the musical staves.



Handwritten musical score for guitar, consisting of multiple systems of staves. The notation includes notes, rests, and dynamic markings such as *cresc.* and *p*. There are also some handwritten annotations and a circled '10'.

Handwritten musical score on ten staves. The notation includes notes, rests, and dynamic markings such as 'p' and 'pp'. There are also some circled annotations and a section labeled 'Solo'.

Staff 1: Initial notes and rests.

Staff 2: Notes with dynamic marking 'p'.

Staff 3: Notes with dynamic marking 'p'.

Staff 4: Notes with dynamic marking 'p'.

Staff 5: Notes with dynamic marking 'p'.

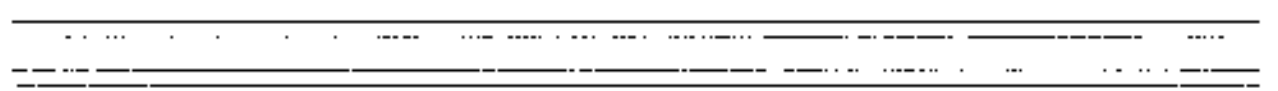
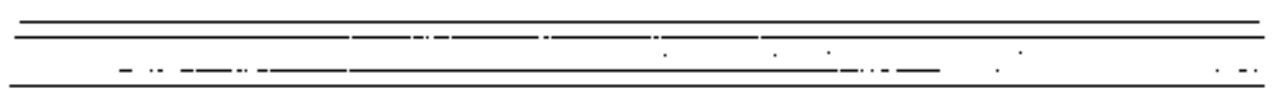
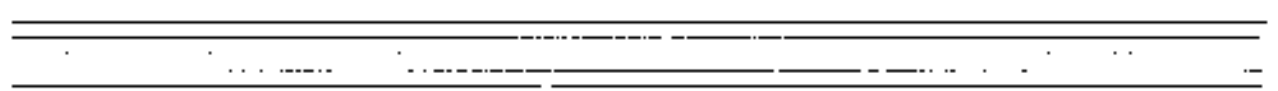
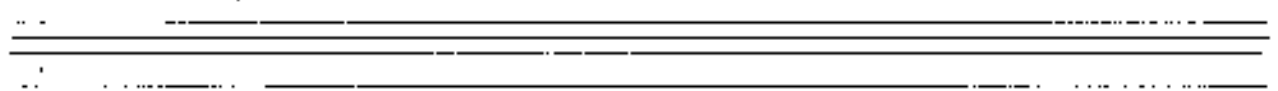
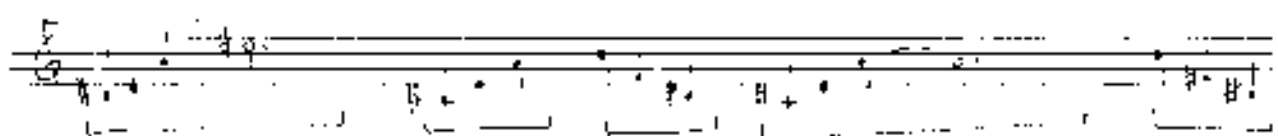
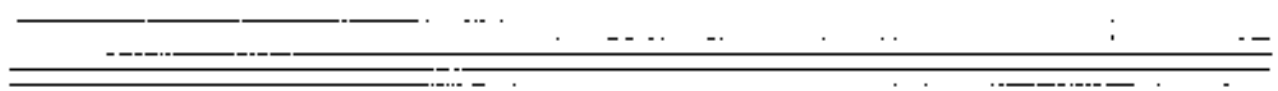
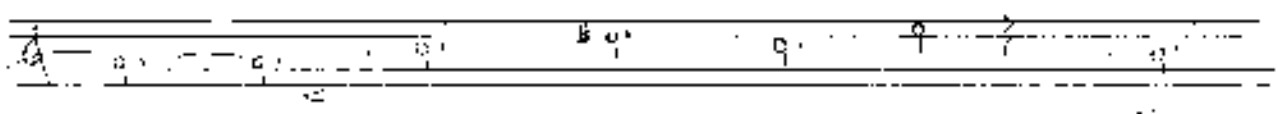
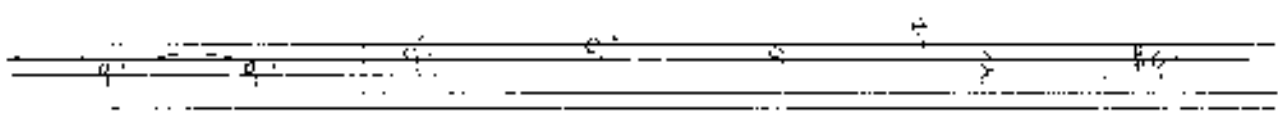
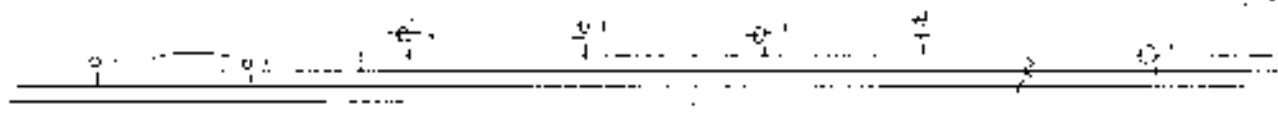
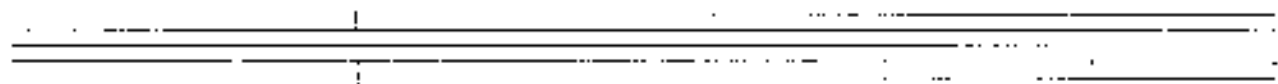
Staff 6: Notes with dynamic marking 'p'.

Staff 7: Notes with dynamic marking 'p'.

Staff 8: Notes with dynamic marking 'pp' and 'p'. Includes a circled 'p' and a 'Solo' section.

Staff 9: Empty staff.

Staff 10: Empty staff.



mit...

The image shows a handwritten musical score on ten staves. The notation is dense and includes various symbols, notes, and rests. A circled '3' is visible in the third staff, and a circled '7' is in the fifth staff. The score is written in a cursive, handwritten style.

Lento

Handwritten musical score for a piece titled "Lento". The score is written on ten staves. The first two staves contain a treble clef, a key signature of one sharp (F#), and a common time signature (C). The notation includes various notes, rests, and dynamic markings such as "p" (piano) and "pp" (pianissimo). There are also circled numbers (1, 2, 3) and arrows indicating phrasing or performance instructions. The score is divided into measures by vertical bar lines, with some measures containing repeat signs. The handwriting is somewhat messy and appears to be a student or composer's draft. The bottom of the page is mostly blank, with some faint lines and a small mark at the very bottom center.