

Notenheft

Skizzen für Lieder
(Tenor oder Bariton)

nach Texten
afrikanischer Dichter
beider Hemisphären

Cresc. *vorwärts*
 die Stoue meine Blumen ich gebe dir ein

Siechen am Wiesengrain der Nacht

(treibend)
 ich schwenke das Tuch meines Lamba, dann suche dir den

Weg den wir zusammen gehen werden

(Zeit)

leuto

warte am Ufer zu = rücke an dem Ufer ins

treffen werden > dir > Zeit

Zeit (langsam) (frei accel. > Zeit x dir

und wenn du dann pe = seufzt hast um mich

2

ruhig (frei) rezitativartig

1. x ich ging einen Weg aus = lang ~ ~ ~

2. x ich gab keine Antwort ~ ~ ~

als der Tod reich fand ~ ~ ~

ich blickte den Tod an ~ ~ ~

ich trug eine Lilie als der

breit

rit

1. Freund rief den Tod!
 2. Tod such fand!

~~Mod.~~ ruhig

1. er er bat um die liliel
 2. will ich geru mit dir plaudern Freund
wie am

doch ich gab keine Antwort ich blickte den
 breit dir die liliel aus Herz heften

poco rit / (sehr ruhig)
 dir

1. Tod an Hand ku ss
 2. will dir die Hand ku ss
 ganz wie ein Freund

3

ruhig (nicht schleppen)

Handwritten musical notation for the first system. The treble clef staff contains a whole note G4, a half note G4, and a half note G4 with a sharp sign. The bass clef staff contains a whole note G3, a half note G3 with a sharp sign, and a half note G3 with a sharp sign. A circled 'f' dynamic marking is present above the second measure. The system concludes with a double bar line.

Handwritten musical notation for the second system. The treble clef staff contains a whole note G4 with a sharp sign, a half note G4 with a sharp sign, and a half note G4 with a sharp sign. The bass clef staff contains a whole note G3, a half note G3 with a sharp sign, and a half note G3 with a sharp sign. The system concludes with a double bar line.

Handwritten musical notation for the third system. The treble clef staff contains a whole note G4 with a sharp sign, a half note G4 with a sharp sign, and a half note G4 with a sharp sign. The bass clef staff contains a whole note G3, a half note G3 with a sharp sign, and a half note G3 with a sharp sign. A long slur covers the entire system. The system concludes with a double bar line.

Handwritten musical notation for the fourth system. The treble clef staff contains a whole note G4 with a sharp sign, a half note G4 with a sharp sign, and a half note G4 with a sharp sign. The bass clef staff contains a whole note G3, a half note G3 with a sharp sign, and a half note G3 with a sharp sign. A circled 'f' dynamic marking is present above the first measure. The system concludes with a double bar line.

Handwritten musical notation for the first system. The treble clef staff contains a melodic line with notes G4, A4, B4, C5, and D5, with a slur over the first four notes and an accent (^) above the first note. The bass clef staff contains a bass line with notes G2, A2, B2, C3, and D3, with a slur over the first four notes and an accent (^) above the first note. The key signature has one sharp (F#).

Handwritten musical notation for the second system. The treble clef staff contains a melodic line with notes G4, A4, B4, and C5, with a slur over the first two notes and an accent (^) above the first note. The bass clef staff contains a bass line with notes G2, A2, B2, and C3, with a slur over the first two notes and an accent (^) above the first note. The key signature has one sharp (F#).

Handwritten musical notation for the third system. The treble clef staff contains a melodic line with notes G4, A4, B4, C5, and D5, with a slur over the first four notes and an accent (^) above the first note. The bass clef staff contains a bass line with notes G2, A2, B2, C3, and D3, with a slur over the first four notes and an accent (^) above the first note. The key signature has one sharp (F#).

Handwritten musical notation for the fourth system. The treble clef staff contains a melodic line with notes G4, A4, B4, and C5, with a slur over the first two notes and an accent (^) above the first note. The bass clef staff contains a bass line with notes G2, A2, B2, and C3, with a slur over the first two notes and an accent (^) above the first note. The key signature has one sharp (F#).

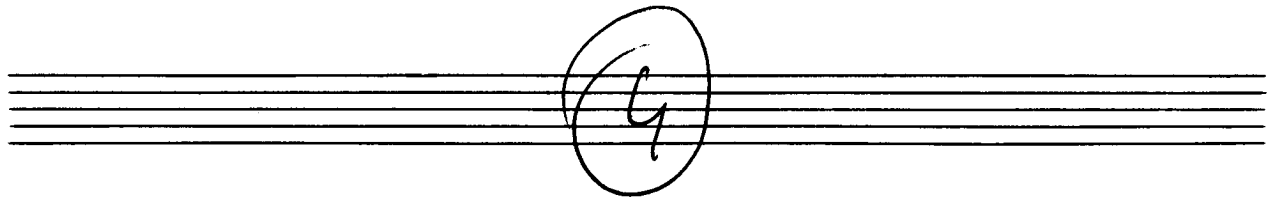
Handwritten musical notation on a grand staff. The key signature is one sharp (F#) and the time signature is 9/8. The word "du" is circled in the first measure. The tempo marking "poco rit" is written above the second measure, with an arrow pointing to it. The word "leuts" is written below the second measure. The notation includes various notes, rests, and dynamic markings such as accents and a circled "p".

Handwritten musical notation on a grand staff. The tempo marking "rit" is written above the first measure. The notation continues with notes, rests, and dynamic markings.

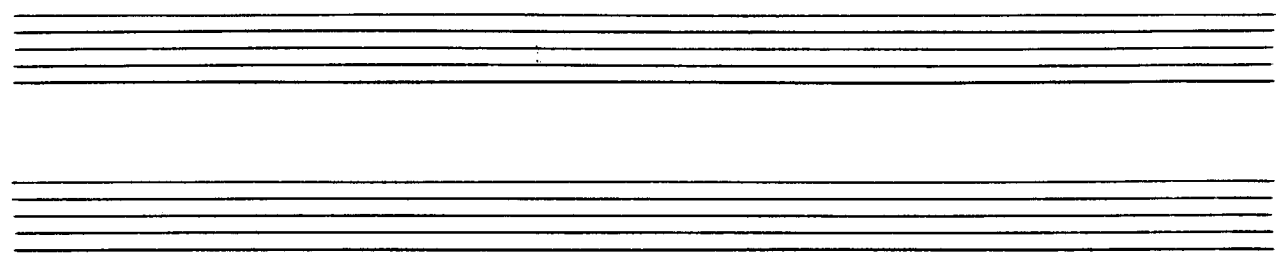
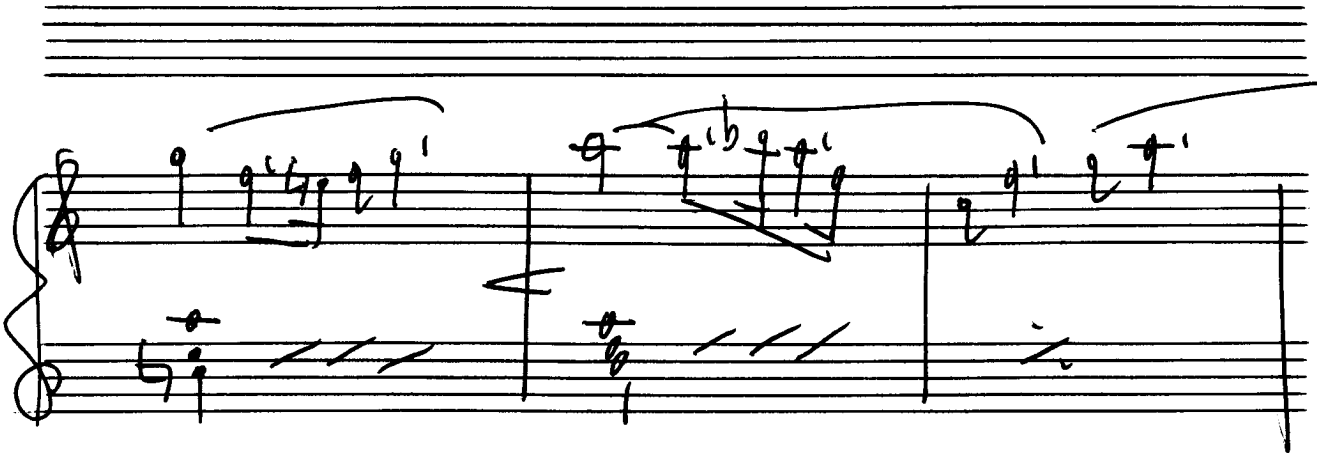
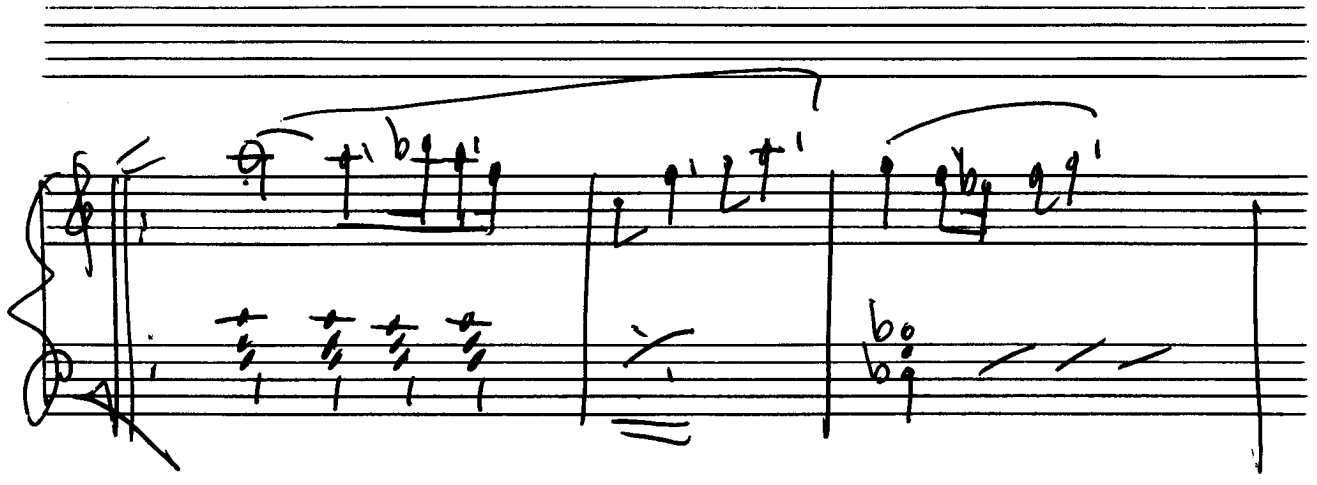
Handwritten musical notation on a grand staff. The tempo marking "(rit) oli" is written above the first measure. The notation includes notes, rests, and dynamic markings. The piece concludes with a double bar line and a fermata.

July (rit)

(rit)



Mod. assai



Handwritten musical notation for the first system. The treble staff contains a melodic line with notes and rests, including a fermata. The bass staff contains a bass line with notes and rests. There are dynamic markings like 'f' and 'V'.

Handwritten musical notation for the second system. The treble staff features chords with accents (^) and a circled 'ff' dynamic marking. The bass staff contains chords and notes.

Handwritten musical notation for the third system. The treble staff features chords with accents (^). The bass staff contains chords and notes.

Handwritten musical notation for the fourth system. The treble staff features chords with accents (^) and a circled 'ff' dynamic marking. The bass staff contains chords and notes.

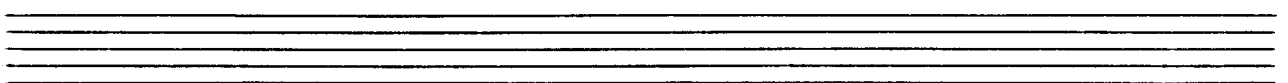
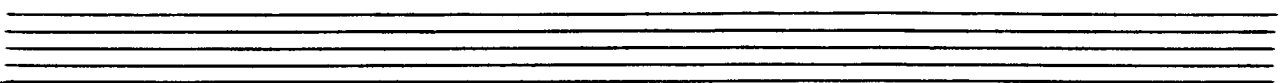
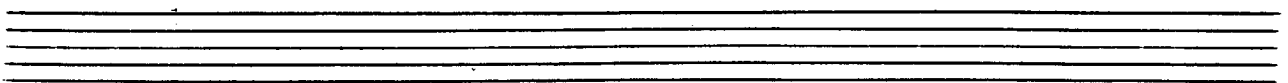
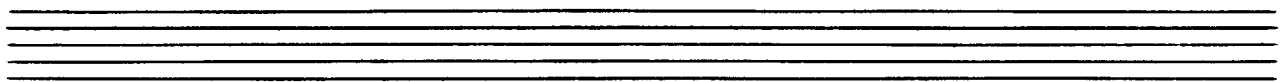
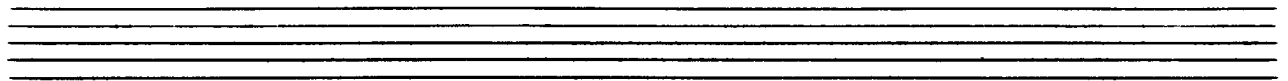
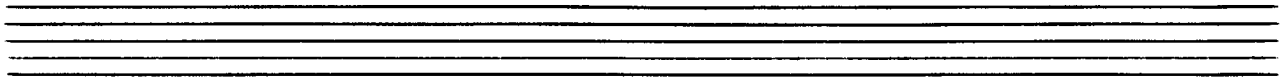
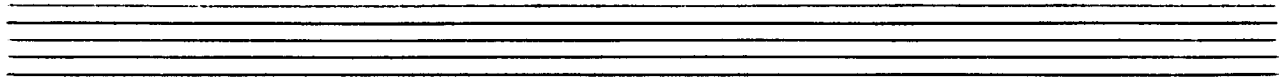
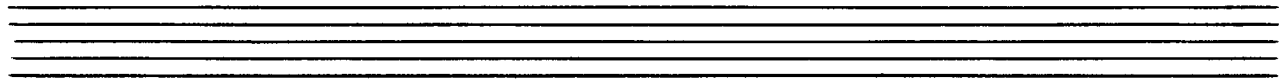
Handwritten musical notation for the first system. The treble clef staff contains several measures with notes and rests, some marked with accents (^). The bass clef staff contains a sequence of notes and rests, ending with a double bar line and the number '9499' written below.

Handwritten musical notation for the second system. The treble clef staff shows notes and rests, with a 'D.C.' marking at the end. The bass clef staff contains chords, some with flats (b) and a circled 'G' above them. There are also some scribbled-out notes and rests.

Handwritten musical notation for the third system. The treble clef staff has a melodic line with a slur over it and a circled 'din' written above. The bass clef staff contains chords and rests, with some notes marked with a plus sign (+).

Handwritten musical notation for the fourth system. The treble clef staff contains notes and rests, with a circled 'P' and a greater-than sign (>) above. The bass clef staff shows chords and rests, with some notes marked with a plus sign (+).

e B A D
G A B



5

Leute (1) nimm diesen Tag mit beiden Händen

Musical notation for the first system, including vocal line and piano accompaniment. The piano part features chords with sharp signs and a dynamic marking *p*.

(2) nimm diese goldne Blume die blüht und

drückbar ab nimm diese herrliche

Musical notation for the second system, including vocal line and piano accompaniment. The piano part features chords with sharp signs and a dynamic marking *p*.

welkt so oft der kleine Zeiger die

Frau (poco rit) Oh

Musical notation for the third system, including vocal line and piano accompaniment. The piano part features chords with sharp signs and dynamic markings *f* and *cresc.*

Runde macht

1. + 2. *b* *ver*
Freudenfest, Oh Freudenfest Oh *#* Seligkeit Oh

Seligkeit Oh Freudenfest Oh Selig =

keit *rit* *Tempo*

dir + rit

Handwritten musical notation on a grand staff. The top staff contains the lyrics "du + ruh" and a circled "C" with a double bar line. The music is in G major (one sharp) and 3/4 time. The first measure is a quarter note G4. The second measure contains a quarter note A4 and a quarter note B4. The third measure contains a quarter note C5. The fourth measure contains a quarter note B4 and a quarter note A4. The fifth measure contains a quarter note G4. The sixth measure contains a quarter note F#4 and a quarter note E4. The seventh measure contains a quarter note D4 and a quarter note C4. The eighth measure contains a quarter note B3 and a quarter note A3. The ninth measure contains a quarter note G3 and a quarter note F#3. The tenth measure contains a quarter note E3 and a quarter note D3. The eleventh measure contains a quarter note C3 and a quarter note B2. The twelfth measure contains a quarter note A2 and a quarter note G2. The thirteenth measure contains a quarter note F#2 and a quarter note E2. The fourteenth measure contains a quarter note D2 and a quarter note C2. The fifteenth measure contains a quarter note B1 and a quarter note A1. The sixteenth measure contains a quarter note G1 and a quarter note F#1. The seventeenth measure contains a quarter note E1 and a quarter note D1. The eighteenth measure contains a quarter note C1 and a quarter note B0. The nineteenth measure contains a quarter note A0 and a quarter note G0. The twentieth measure contains a quarter note F#0 and a quarter note E0. The notation is heavily scribbled over with black ink.

Handwritten musical notation on a grand staff, heavily scribbled over with black ink. The notation is mostly illegible due to the heavy scribbles.

Handwritten musical notation on a grand staff. The top staff contains the lyrics "(sehr langsam) (flüsternd) (nimm dieses Leben) ge = beugten Knie's (singen) Oh". The music is in G major (one sharp) and 3/4 time. The first measure is a quarter note G4. The second measure contains a quarter note A4 and a quarter note B4. The third measure contains a quarter note C5. The fourth measure contains a quarter note B4 and a quarter note A4. The fifth measure contains a quarter note G4. The sixth measure contains a quarter note F#4 and a quarter note E4. The seventh measure contains a quarter note D4 and a quarter note C4. The eighth measure contains a quarter note B3 and a quarter note A3. The ninth measure contains a quarter note G3 and a quarter note F#3. The tenth measure contains a quarter note E3 and a quarter note D3. The eleventh measure contains a quarter note C3 and a quarter note B2. The twelfth measure contains a quarter note A2 and a quarter note G2. The thirteenth measure contains a quarter note F#2 and a quarter note E2. The fourteenth measure contains a quarter note D2 and a quarter note C2. The fifteenth measure contains a quarter note B1 and a quarter note A1. The sixteenth measure contains a quarter note G1 and a quarter note F#1. The seventeenth measure contains a quarter note E1 and a quarter note D1. The eighteenth measure contains a quarter note C1 and a quarter note B0. The nineteenth measure contains a quarter note A0 and a quarter note G0. The twentieth measure contains a quarter note F#0 and a quarter note E0. The notation is heavily scribbled over with black ink.

Handwritten musical notation on a grand staff. The top staff contains the lyrics "Herz.) 3/4 Oh Herz (Lüpa) mpp". The music is in G major (one sharp) and 3/4 time. The first measure is a quarter note G4. The second measure contains a quarter note A4 and a quarter note B4. The third measure contains a quarter note C5. The fourth measure contains a quarter note B4 and a quarter note A4. The fifth measure contains a quarter note G4. The sixth measure contains a quarter note F#4 and a quarter note E4. The seventh measure contains a quarter note D4 and a quarter note C4. The eighth measure contains a quarter note B3 and a quarter note A3. The ninth measure contains a quarter note G3 and a quarter note F#3. The tenth measure contains a quarter note E3 and a quarter note D3. The eleventh measure contains a quarter note C3 and a quarter note B2. The twelfth measure contains a quarter note A2 and a quarter note G2. The thirteenth measure contains a quarter note F#2 and a quarter note E2. The fourteenth measure contains a quarter note D2 and a quarter note C2. The fifteenth measure contains a quarter note B1 and a quarter note A1. The sixteenth measure contains a quarter note G1 and a quarter note F#1. The seventeenth measure contains a quarter note E1 and a quarter note D1. The eighteenth measure contains a quarter note C1 and a quarter note B0. The nineteenth measure contains a quarter note A0 and a quarter note G0. The twentieth measure contains a quarter note F#0 and a quarter note E0. The notation is heavily scribbled over with black ink.

6

Alto.

Handwritten musical notation for the first system. The vocal line (treble clef) begins with a 4/4 time signature and contains several measures with notes, rests, and slurs. The piano accompaniment (bass clef) features chords and rhythmic patterns, including a triplet of eighth notes in the first measure. There are some handwritten annotations like '3' and '4' near the piano part.

Handwritten musical notation for the second system. The vocal line continues with notes and slurs. The piano accompaniment includes a triplet of eighth notes in the first measure and various chordal textures. There are some handwritten annotations like '3' and '4' near the piano part.

Handwritten musical notation for the third system. The vocal line features notes with slurs and accents. The piano accompaniment includes a dynamic marking 'f' and a circled '7' in the third measure. There are some handwritten annotations like '3' and '4' near the piano part.

Handwritten musical notation for the fourth system. The vocal line concludes with notes and slurs. The piano accompaniment features chords and rhythmic patterns, ending with a double bar line. There are some handwritten annotations like '3' and '4' near the piano part.

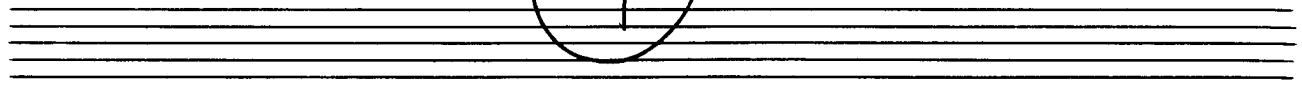
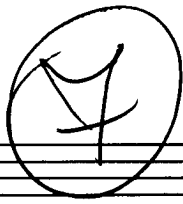
steigen

(Ztet mitteln)

1.

2.

Chorus (C: D: 8: 2)



ruhig

Handwritten musical notation for the first system, including a treble and bass clef, a 4/4 time signature, a circled 'p' dynamic marking, and various notes and rests.

liebster liebster komm zu den

Handwritten musical notation for the second system, including a treble and bass clef, a circled 'p' dynamic marking, and notes corresponding to the lyrics 'liebster liebster komm zu den'.

Hügeln komm komm und ent-

Handwritten musical notation for the third system, including a treble and bass clef, notes corresponding to the lyrics 'Hügeln komm komm und ent-'.

Steigern

decke mich neu dort wo mein Geist sich

formte liebster künnte du (poco rit) Mitgeleise

appassionata

Neu sind wir wie das machte Morgen

Steigern →

frisch vom Atem der Dämmerung erfüllt
Beißt neuer wir aus der Stadt

pesante

(gut) *gut*

Hügelu hinauf zu den Hügelu

dort mein Liebster

dort auf Hügelu zwischen den vielen pochenden Herzen, werde ich

gut Liebster, unter den Hügelu neu und macht sein dort auf den Hügelu

D.C. sehr langsam (*gut*) *zart*

Handwritten musical score for the first system, featuring a treble and bass clef with various notes and rests.

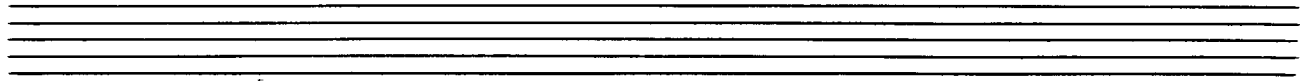
Handwritten musical score for the second system, including a treble clef and a circled **ff** dynamic marking.

sehr buer (gentils)

Handwritten musical score for the third system with lyrics: **Liebster komm zu den Hügelu Hügelu**

vorwärts (acce)

Handwritten musical score for the fourth system with lyrics: **Liebster komm zu den Hügelu Hügelu**



groß. mit

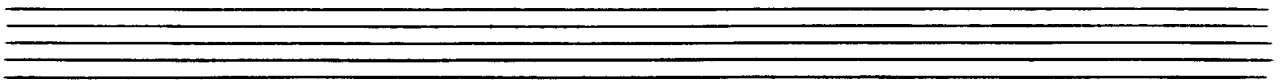
Handwritten musical notation for the first system, including treble and bass clefs, notes, and rests.

komme und
erlebe mich ~~komme~~
neu

sehr breit

Handwritten musical notation for the second system, including treble and bass clefs, notes, and rests.

dort wo unser
Geist sich ~~erlebe~~ gut tut
Geist sich fornte -



Handwritten musical notation for the third system, including treble and bass clefs, notes, and rests.

32 Liebster Komme zu den

