

L.v. BEETHOVEN



W.A. MOZART

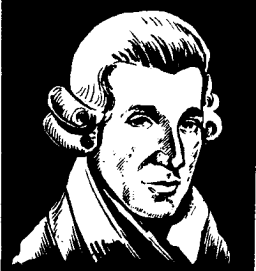


NOTENHEFT

F. SCHUBERT

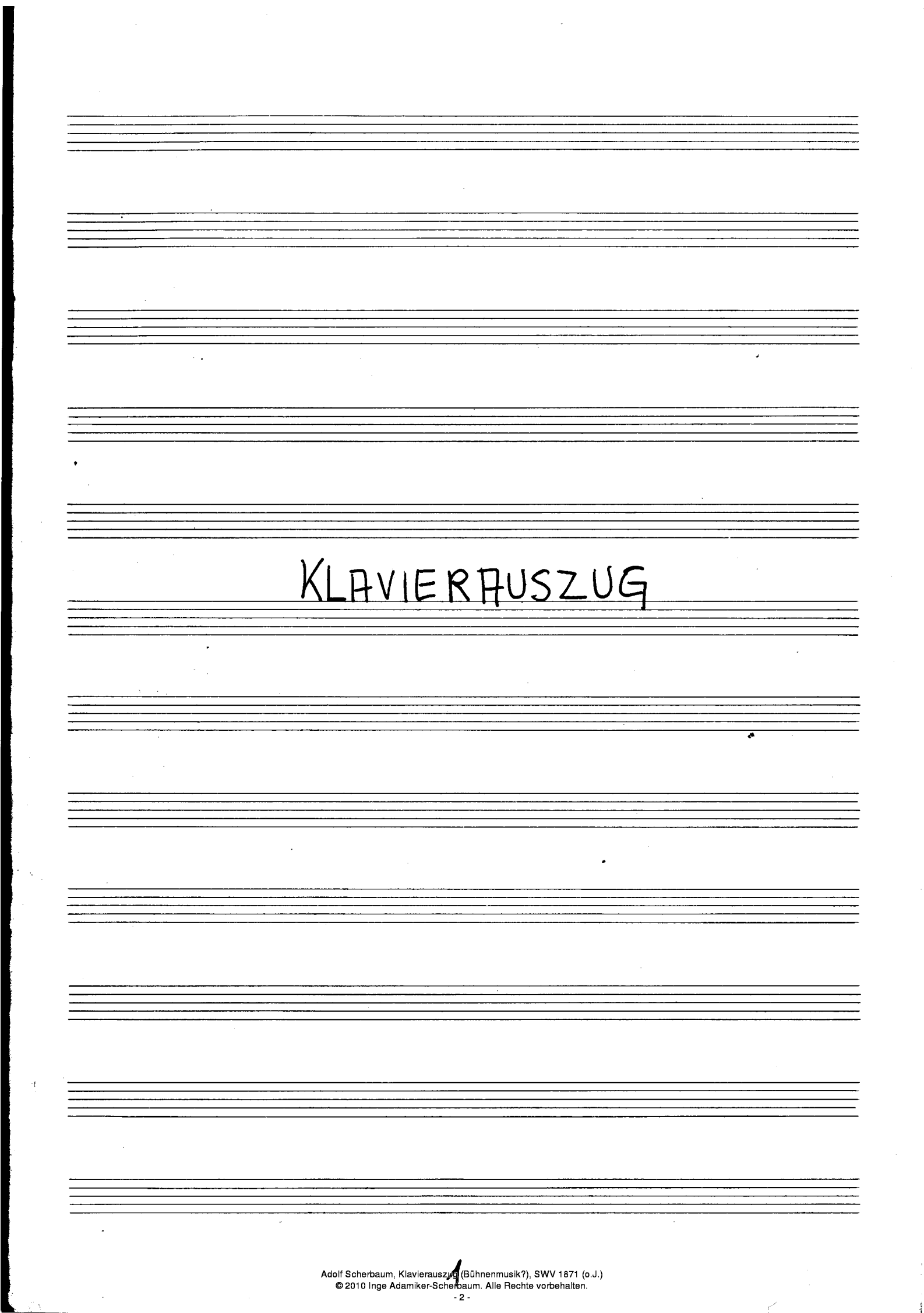


J. HAYDN



J. STRAUSS





KLAVIERAUSZUG

Act 1

lento

accel.

rit...

breit

Handwritten musical score for the first system. It consists of two staves. The upper staff is in treble clef and contains a series of notes with a sharp sign (F#) and a 'V' marking. The lower staff is in bass clef and contains notes with a sharp sign (F#) and a 'V' marking. There are large curved lines above the notes in both staves, suggesting a wide interval or a specific articulation. The word 'breit' is written above the first measure.

dim ~ gut...

Handwritten musical score for the second system. It consists of two staves. The upper staff is in treble clef and contains notes with a 'dim' marking and a 'gut...' marking. The lower staff is in bass clef and contains notes with a 'dim' marking and a 'gut...' marking. There are large curved lines above the notes in both staves. The word 'dim' is written above the first measure, and 'gut...' is written above the second measure.

sehr ruhig

Handwritten musical score for the third system. It consists of two staves. The upper staff is in treble clef and contains notes with a 'sehr ruhig' marking. The lower staff is in bass clef and contains notes with a 'sehr ruhig' marking. There are large curved lines above the notes in both staves. The word 'sehr ruhig' is written above the first measure.

Handwritten musical notation for the first system. It consists of two staves. The upper staff is in treble clef and contains a melodic line with notes G4, A4, B4, C5, and D5, with slurs and dynamic markings 'af' and 'f'. The lower staff is in bass clef and contains a bass line with notes G2, A2, B2, C3, and D3, with slurs and a bracketed '4' at the end.

Handwritten musical notation for the second system. It consists of two staves. The upper staff is in treble clef and contains a melodic line with notes G4, A4, B4, and C5, with slurs and dynamic markings. The lower staff is in bass clef and contains a bass line with notes G2, A2, B2, and C3, with slurs. The time signature is 3/4. The lyrics 'du + sit' are written above the notes.

Handwritten musical notation for the third system. It consists of two staves. The upper staff is in treble clef and contains a melodic line with notes G4, A4, B4, and C5, with slurs and dynamic markings. The lower staff is in bass clef and contains a bass line with notes G2, A2, B2, and C3, with slurs. The time signature is 6/8. The lyrics 'sit' are written above the notes.

No. 1.

Allegro

Handwritten musical notation for the first system, measures 1-4. It features a treble and bass clef, a 2/4 time signature, and a circled 'F' in the bass clef. The music includes chords, eighth notes, and a fermata over a chord in the second measure.

Handwritten musical notation for the second system, measures 5-8. It continues the piece with various chordal textures and melodic lines in both staves.

Handwritten musical notation for the third system, measures 9-12. It shows a continuation of the musical ideas with some dynamic markings and phrasing slurs.

Handwritten musical notation for the fourth system, measures 13-16. It concludes the piece with a final cadence and a fermata over the last chord.

Handwritten musical notation on a grand staff. The treble clef staff contains a key signature of one sharp (F#) and a series of chords and notes, including a large bracketed chord in the first measure. The bass clef staff contains a simple bass line with quarter notes.

Handwritten musical notation on a grand staff. The treble clef staff features a melodic line with a slur and an accent mark over the first note, and a large slur covering the final two measures. The bass clef staff has a bass line with quarter notes and rests.

Handwritten musical notation on a grand staff. The treble clef staff shows a melodic line with a slur and a key signature change to one sharp (F#). The bass clef staff has a bass line with quarter notes and rests.

accel.

mit ||:||

Tempo

No 2.

Allegretto (ruhig)

Handwritten musical notation for the first system. It consists of two staves. The top staff is in treble clef and the bottom staff is in bass clef. The key signature has one sharp (F#) and the time signature is 3/4. The first measure contains a circled 'p' (piano) dynamic marking. The music includes quarter notes, eighth notes, and rests.

Handwritten musical notation for the second system. It consists of two staves. The top staff is in treble clef and the bottom staff is in bass clef. The key signature has one sharp (F#) and the time signature is 3/4. The music includes quarter notes, eighth notes, and rests.

Handwritten musical notation for the third system. It consists of two staves. The top staff is in treble clef and the bottom staff is in bass clef. The key signature has one sharp (F#) and the time signature is 3/4. The music includes quarter notes, eighth notes, and rests.

etwas bewegter (crescendo)

Handwritten musical notation for the first system. It consists of two staves: a treble clef staff and a bass clef staff. The key signature is G major (one sharp). The treble staff begins with a circled 'p' and a double bar line. The music includes quarter notes, eighth notes, and chords. The bass staff provides harmonic support with quarter notes and chords.

accel.

Handwritten musical notation for the second system. It consists of two staves. The treble staff starts with a forte 'f' dynamic marking. The music continues with quarter notes and chords, showing a slight increase in tempo as indicated by the 'accel.' marking.

poco rit - - -

Handwritten musical notation for the third system. It consists of two staves. The treble staff features a circled 'f' dynamic marking. The system concludes with a double bar line and a fermata over the final notes. The 'poco rit' marking indicates a slight deceleration towards the end.

Allegro (passionata)

Handwritten musical notation for the first system. The treble clef staff contains a circled key signature of one sharp (F#) and several chords and melodic fragments. The bass clef staff contains chords with figured bass notation, including '444', '4-8-9', and 'b 0 9/9'.

Handwritten musical notation for the second system. The treble clef staff shows chords with first finger (1) and second finger (2) markings. The bass clef staff includes chords with figured bass notation like 'b 0 9/9' and '9/9', along with melodic lines and a fermata.

rit und din

Handwritten musical notation for the third system, marked 'rit und din'. The treble clef staff has a circled 'p' and a circled 'pp'. The bass clef staff has a circled 'p'. The system ends with a circled 'p' and a circled 'pp'.

> rit und din

Handwritten musical notation for the fourth system, marked '> rit und din'. The treble clef staff has a circled 'p' and a circled 'pp'. The bass clef staff has a circled 'pp' and a circled 'p'. The system ends with a circled 'pp' and a circled 'p'.

No. 3.

Allegretto

quasi

conciato

Presto

Handwritten musical notation for the first system, featuring a treble clef and a bass clef. The treble staff has a melodic line with slurs and accents. The bass staff has a bass line with slurs and accents.

Handwritten musical notation for the second system, featuring a treble clef and a bass clef. The treble staff has a melodic line with slurs and accents. The bass staff has a bass line with slurs and accents.

Handwritten musical notation for the third system, featuring a treble clef and a bass clef. The treble staff has a melodic line with slurs and accents. The bass staff has a bass line with slurs and accents.

Handwritten musical notation for the fourth system, featuring a treble clef and a bass clef. The treble staff has a melodic line with slurs and accents. The bass staff has a bass line with slurs and accents.

Handwritten musical notation for the first system. It consists of two staves. The top staff is in treble clef and the bottom staff is in bass clef. The time signature is 6/8. The first measure of the top staff has a slur over a series of notes, followed by a chord with a natural sign. The second measure has a similar slur and chord. The bottom staff shows chords with flats and naturals, with a double bar line in the second measure.

Handwritten musical notation for the second system. It consists of two staves. The top staff has a treble clef and the bottom staff has a bass clef. The notation shows rhythmic patterns with stems and beams, and chords with stems. There are slurs and accents throughout the system.

Handwritten musical notation for the third system. It consists of two staves. The top staff has a treble clef and the bottom staff has a bass clef. The notation features complex chordal structures with stems and beams, and rhythmic patterns. There are slurs and accents throughout the system.

Handwritten musical notation for the first system. It consists of two staves (treble and bass clef). The music is written in a key with one sharp (F#). The notation includes chords and some rhythmic markings, such as a 'y' above a note in the first measure of the upper staff.

Handwritten musical notation for the second system. It features two staves. The system begins with a double bar line and repeat signs (two vertical lines with dots) on both staves. The notation includes chords and some melodic lines, with a large curved line above the second measure of the upper staff.

Handwritten musical notation for the third system. It consists of two staves. The system starts with a double bar line and repeat signs. The notation includes several measures with chords, some of which are bracketed and have a '2' written above or below them, possibly indicating a second ending or a specific fingering. There are also some melodic lines.

Handwritten musical notation for the fourth system. It consists of two staves. The system begins with a double bar line and repeat signs. The notation includes chords and melodic lines, with some notes marked with a flat sign (b). The system ends with a double bar line and repeat signs.

sehr ruhig (frei)

rit —

lento

Handwritten musical notation for the first system, marked "lento" and "pp". The system consists of two staves. The upper staff has a treble clef and contains a melodic line with a slur over the first two measures and a fermata over the second measure. The lower staff has a bass clef and contains a bass line with a slur over the first two measures and a fermata over the second measure. The key signature has one sharp (F#). The first measure of the upper staff contains a quarter note F# and a quarter note G. The second measure contains a quarter note A and a quarter note B. The first measure of the lower staff contains a quarter note F# and a quarter note G. The second measure contains a quarter note A and a quarter note B. There are dynamic markings "pp" and "p".

(poco rit) Breit

Handwritten musical notation for the second system, marked "f" and "poco rit". The system consists of two staves. The upper staff has a treble clef and contains a melodic line with a slur over the first two measures and a fermata over the second measure. The lower staff has a bass clef and contains a bass line with a slur over the first two measures and a fermata over the second measure. The key signature has one flat (Bb). The first measure of the upper staff contains a quarter note Bb and a quarter note C. The second measure contains a quarter note D and a quarter note Eb. The first measure of the lower staff contains a quarter note Bb and a quarter note C. The second measure contains a quarter note D and a quarter note Eb. There are dynamic markings "f" and "p".

dim + rit

Handwritten musical notation for the third system, marked "dim + rit" and "rit". The system consists of two staves. The upper staff has a treble clef and contains a melodic line with a slur over the first two measures and a fermata over the second measure. The lower staff has a bass clef and contains a bass line with a slur over the first two measures and a fermata over the second measure. The key signature has one flat (Bb). The first measure of the upper staff contains a quarter note Bb and a quarter note C. The second measure contains a quarter note D and a quarter note Eb. The first measure of the lower staff contains a quarter note Bb and a quarter note C. The second measure contains a quarter note D and a quarter note Eb. There are dynamic markings "dim + rit" and "rit".

No 4.

quasi

3/4

P

3

brist

f

19

1

(poco rit) diu

sehr ruhig

pp

3

9

> fp

> rit...

(frei)

3

3

rit. ad

> pp

rit Lento (pr. rit)

sehr rasch

No. 5

(sempre cresc.)

Handwritten musical notation for the first system. The treble staff contains a series of chords with accents (^) above them. The bass staff contains a melodic line with accents (^) above it. A circled **ff** dynamic marking is present in the bass staff.

Handwritten musical notation for the second system. The treble staff contains chords with accents (^) above them. The bass staff contains a long melodic line with accents (^) above it.

Handwritten musical notation for the third system. A handwritten note in the treble staff reads "(letzten 4 Takte wiederholt)". The treble staff contains chords with a key signature change to G major (one sharp). The bass staff contains a melodic line with accents (^) above it.

Handwritten musical notation for the fourth system. The treble staff contains chords with accents (^) above them. The bass staff contains a long melodic line with accents (^) above it.

Handwritten musical notation for the first system, featuring a treble clef, a key signature of one sharp (F#), and a 4/4 time signature. The music consists of two staves. The upper staff contains a series of chords with accents (^) above them, and the lower staff contains a few notes with accents.

Handwritten musical notation for the second system, featuring a treble clef and a common time signature (C). The music consists of two staves. The upper staff contains chords with a triplet bracket under the first three notes, and the lower staff contains a few notes.

Handwritten musical notation for the third system, featuring a treble clef and a 4/4 time signature. The music consists of two staves. The upper staff contains a series of chords with accents (^) above them, and the lower staff contains a few notes with accents.

Handwritten musical notation for the fourth system, featuring a treble clef and a 4/4 time signature. The music consists of two staves. The upper staff contains a series of chords with accents (^) above them, and the lower staff contains a few notes with accents. A dynamic marking *mf* is present at the bottom left.

Legato mit + dir

sehr ruhig -

Handwritten musical notation for the first system. It consists of two staves. The upper staff is in treble clef and contains a melodic line starting with a quarter note G#4, followed by quarter notes A4, B4, and C5. The lower staff is in bass clef and contains a whole note chord consisting of G#3, A3, and B3. A circled 'P' indicates piano dynamics. The time signature is 4/4. The system ends with a double bar line.

Handwritten musical notation for the second system. The upper staff continues the melodic line with eighth notes and a quarter note, including a slur over the first four notes. The lower staff features a bass line with eighth notes and a quarter note, also including a slur. The system ends with a double bar line.

Handwritten musical notation for the third system. The upper staff continues the melodic line with eighth notes and a quarter note, including a slur over the first four notes. The lower staff features a bass line with eighth notes and a quarter note, also including a slur. The system ends with a double bar line.

(poco rit) *breit*

gröÙ. rit - dim

pp

D.C.

$\frac{4}{4}$ *sehr rasch al*

Handwritten musical notation for the first system, consisting of two staves. The top staff is in treble clef with a key signature of one sharp (F#) and contains a melodic line with slurs and accents. The bottom staff is in bass clef and contains a bass line with slurs and accents. The system concludes with a double bar line.

Handwritten musical notation for the second system, consisting of two staves. The top staff has a treble clef and contains a few notes followed by a rest. The bottom staff has a bass clef and contains a few notes followed by a rest. A large 'FINE' sign is written across the staves, indicating the end of the piece.

Act 2

No. 6.

Allegro con brio

Handwritten musical notation for the first system of Act 2, No. 6. It features a grand staff with treble and bass clefs. The time signature is 2/4, with a 3/4 measure indicated. The tempo is 'Allegro con brio' and the dynamic is 'ff'. The notation includes various notes, rests, and bar lines.

Handwritten musical notation for the second system of Act 2, No. 6. It features a grand staff with treble and bass clefs. The notation includes various notes, rests, and bar lines.

Handwritten musical notation for the third system of Act 2, No. 6. It features a grand staff with treble and bass clefs. The notation includes various notes, rests, and bar lines.

Handwritten musical notation for the first system. The treble staff contains a melodic line with notes, rests, and accents. The bass staff contains a harmonic accompaniment with chords and rests. Dynamic markings include accents and a circled 'p'.

Handwritten musical notation for the second system. The treble staff continues the melodic line with notes and accents. The bass staff features chords and rests. A circled 'p' is present in the middle of the system.

Handwritten musical notation for the third system. The treble staff has notes with accents and slurs. The bass staff has chords and rests. Dynamics include 'f' and 'p'.

Handwritten musical notation for the fourth system. The treble staff has notes with accents and slurs. The bass staff has chords and rests. Dynamics include 'pp' and 'f'.

Handwritten musical notation for the first system, featuring a treble and bass clef with various notes, rests, and dynamic markings like accents and slurs.

breit

rit.

Handwritten musical notation for the second system, including a 3/4 time signature, a "rit." marking, and complex chordal structures in both staves.

Lento

Lento

Handwritten musical notation for the third system, marked "Lento", with long note values and slurs across both staves.

rit + din

rit + din

Handwritten musical notation for the fourth system, marked "rit + din", showing a sequence of chords and melodic lines.

Valse Mod.

Handwritten musical notation for the first system. It consists of two staves. The upper staff is in treble clef and contains a melodic line with a slur over the first three measures. The lower staff is in bass clef and contains a bass line with quarter notes. A circled 'P' (piano) is written above the first measure of the upper staff. The time signature is 3/4, indicated by '3' over '4'.

Handwritten musical notation for the second system. It consists of two staves. The upper staff continues the melodic line with slurs and accents. The lower staff continues the bass line. The word 'Cresc.' (Crescendo) is written above the fourth measure of the upper staff.

Handwritten musical notation for the third system. It consists of two staves. The upper staff continues the melodic line. The lower staff continues the bass line. A dynamic marking 'f' (forte) is written above the fourth measure of the lower staff.

Handwritten musical notation for the fourth system. It consists of two staves. The upper staff continues the melodic line. The lower staff continues the bass line. A circled '7' is written above the second measure of the lower staff.

Handwritten musical notation for the first system, featuring a treble and bass clef with various notes and rests.

Handwritten musical notation for the second system, including a treble clef, a key signature change to one sharp, and the word "di" written below the notes.

Handwritten musical notation for the third system, showing a treble clef, a key signature change to two sharps, and a circled "P" marking.

Handwritten musical notation for the fourth system, including a treble clef, a key signature change to one sharp, a dynamic marking "f", and the tempo instruction "(2x poco rit)".

Handwritten musical notation on two staves. The right staff contains chords with accidentals and dynamic markings like *mf* and *p*. The left staff contains a melodic line with a wavy line indicating a tremolo. The tempo marking *accel.* is written above the right staff.

Handwritten musical notation on two staves. The right staff features a complex chord structure with an arrow pointing right. The left staff has a melodic line with a wavy line and a dynamic marking *p*.

Handwritten musical notation on two staves. The right staff has a melodic line with a slur and various accidentals. The left staff has a bass line with a wavy line. Above the staves, the handwritten text "(immer turbulenter)" is written.

Handwritten musical notation on two staves. The right staff has a melodic line with a slur and various accidentals. The left staff has a bass line with a wavy line and various accidentals.

Presto (schmerzvoll)

Handwritten musical notation for the first system, featuring a treble and bass clef with various chords and melodic lines. The notation includes accents (^) and slurs over notes.

Handwritten musical notation for the second system, showing a continuation of the piece with complex chordal structures and some melodic fragments.

Handwritten musical notation for the third system, including a treble clef and a bass clef with a prominent melodic line in the treble. The notation features slurs and accents.

ruhiger (immer ruhiger)

Handwritten musical notation for the fourth system, starting with a piano (p) dynamic marking and a treble clef. The notation includes slurs and dynamic markings.

Presto (op. 1)

rit - dim

No 7.

langsam

Handwritten musical notation for the first system, featuring a grand staff with a treble clef and a 2/4 time signature. The music consists of four measures. The first three measures are mostly rests in the treble clef with chords in the bass clef. The fourth measure has a treble clef entry with a circled 'p' dynamic marking. The bass clef continues with chords. A large slur covers the final two notes of the treble clef in the fourth measure.

Handwritten musical notation for the second system, featuring a grand staff with a treble clef. The music consists of four measures. The first measure has a treble clef entry with a circled 'p' dynamic marking. The bass clef continues with chords. A large slur covers the final two notes of the treble clef in the first measure. The second measure has a treble clef entry with a circled 'p' dynamic marking. The bass clef continues with chords. A large slur covers the final two notes of the treble clef in the second measure. The third measure has a treble clef entry with a circled 'p' dynamic marking. The bass clef continues with chords. A large slur covers the final two notes of the treble clef in the third measure. The fourth measure has a treble clef entry with a circled 'p' dynamic marking. The bass clef continues with chords. A large slur covers the final two notes of the treble clef in the fourth measure.

Handwritten musical notation for the third system, featuring a grand staff with a treble clef. The music consists of four measures. The first measure has a treble clef entry with a circled 'p' dynamic marking. The bass clef continues with chords. A large slur covers the final two notes of the treble clef in the first measure. The second measure has a treble clef entry with a circled 'p' dynamic marking. The bass clef continues with chords. A large slur covers the final two notes of the treble clef in the second measure. The third measure has a treble clef entry with a circled 'p' dynamic marking. The bass clef continues with chords. A large slur covers the final two notes of the treble clef in the third measure. The fourth measure has a treble clef entry with a circled 'p' dynamic marking. The bass clef continues with chords. A large slur covers the final two notes of the treble clef in the fourth measure.

Handwritten musical score for the first system. It consists of two staves. The upper staff is in treble clef and contains several notes with stems, some marked with accents and a circled 'p'. The lower staff is in bass clef and contains notes with stems, some marked with accents and a circled 'p'. A double bar line is present, followed by a section marked 'pp' (pianissimo) with notes in both staves.

Handwritten musical score for the second system. The upper staff is in treble clef and shows several chords with stems, some marked with a '+' sign. The lower staff is in bass clef and contains notes with stems, some marked with a '+' sign.

Handwritten musical score for the third system. The upper staff is in treble clef and contains notes with stems, some marked with a circled 'f' and a circled 'ff'. The lower staff is in bass clef and contains notes with stems, some marked with a circled 'ff'.

Handwritten musical score for the fourth system. The upper staff is in treble clef and contains notes with stems, some marked with a circled 'p' and a '+' sign. The lower staff is in bass clef and contains notes with stems, some marked with a circled 'p' and a '+' sign. The system ends with a double bar line and markings: '2. x', 'D.C.', and 'al'.

Handwritten musical score, first system. The piece is in 3/4 time, marked *(frei)* and *rit (chri)*. The notation includes a circled *p* dynamic marking, a *f* dynamic marking, and various note values and accidentals.

Handwritten musical score, second system. The tempo is marked *Lento*. The notation features a long slur over the first few notes, a *fp* dynamic marking, and a *pp* dynamic marking. The bass line contains several chords with flats.

Handwritten musical score, third system. The tempo is marked *Lunga*. The notation includes a *ppp* dynamic marking, a *Pedal* instruction, and a *#9* chord. The system concludes with a *pppp* dynamic marking.

No. 8

ruhig

Handwritten musical score for the first system, consisting of two staves. The music is in G major. The first staff begins with a treble clef and a key signature of one sharp (F#). It contains several measures of music with notes and rests, including a dynamic marking of *f* (forte) and a *p* (piano) marking. The second staff is in bass clef and contains corresponding bass notes and rests.

Handwritten musical score for the second system, consisting of two staves. The music is in G major. The first staff begins with a treble clef and a key signature of one sharp (F#). It contains several measures of music with notes and rests, including a dynamic marking of *dim* (diminuendo) and a *p* (piano) marking. The second staff is in bass clef and contains corresponding bass notes and rests.

Handwritten musical score for the third system, consisting of two staves. The music is in G major. The first staff begins with a treble clef and a key signature of one sharp (F#). It contains several measures of music with notes and rests, including a dynamic marking of *poco rit* (poco ritardando) and a *p* (piano) marking. The second staff is in bass clef and contains corresponding bass notes and rests.

Handwritten musical score for the fourth system, consisting of two staves. The music is in G major. The first staff begins with a treble clef and a key signature of one sharp (F#). It contains several measures of music with notes and rests, including a tempo marking of *Allegretto* and a *p* (piano) marking. The second staff is in bass clef and contains corresponding bass notes and rests.

Handwritten musical notation for the first system. The treble clef staff contains a triplet of eighth notes, followed by a series of notes with slurs and accents. The bass clef staff contains chords and single notes, with a dynamic marking of *mf*.

Handwritten musical notation for the second system. It features a grand staff with complex chordal textures. The treble clef staff has notes with slurs and accents, while the bass clef staff has chords. Dynamic markings include *f* and *mf*.

accel →

Handwritten musical notation for the third system. It begins with the tempo marking *Presto* and a 2/4 time signature. The treble clef staff has a melodic line with slurs and accents, while the bass clef staff has chords.

poco rit + dim.

Handwritten musical notation for the fourth system. It concludes with the tempo marking *Lento* and a piano dynamic marking *pp*. The treble clef staff has notes with slurs and accents, while the bass clef staff has chords.

ruhig *rit*

No. 9.

Allegro con brio

Handwritten musical notation for the first system, measures 1-4. The right hand starts with a treble clef and a 2/4 time signature. The left hand starts with a bass clef. The music features chords with accents and dynamic markings like 'f' in a circle.

Handwritten musical notation for the second system, measures 5-8. Similar to the first system, it shows chords with accents and dynamic markings.

Handwritten musical notation for the third system, measures 9-12. The right hand has a melodic line with a crescendo marking and a circled 'p'. The left hand has a bass line with a sharp sign.

Handwritten musical notation for the fourth system, measures 13-16. The right hand has a melodic line with a forte 'f' marking. The left hand has a bass line with a sharp sign.

turbulent

2+ff <

Handwritten musical notation for the first system. The treble clef staff contains a melodic line with notes and accidentals (flats and sharps). The bass clef staff contains a bass line with notes and accidentals. Dynamic markings include a forte 'f' and a sharp sign '#'. There are also some handwritten annotations above the notes.

Handwritten musical notation for the second system. The treble clef staff features a melodic line with notes and accidentals, including a dynamic marking of 'fp' (fortissimo piano). The bass clef staff contains a bass line with notes and accidentals. There are some handwritten annotations above the notes.

accel.

Handwritten musical notation for the third system. The treble clef staff contains a melodic line with notes and accidentals, including a dynamic marking of 'f'. The bass clef staff contains a bass line with notes and accidentals. There are some handwritten annotations above the notes.

Presto

Handwritten musical notation for the fourth system. The treble clef staff contains a melodic line with notes and accidentals, including a dynamic marking of 'f' and a circled sharp sign '#'. The bass clef staff contains a bass line with notes and accidentals. The system concludes with a double bar line and the word 'Fine'.

sehr ruhig

6 dolce

3/4

f

f

p

D.C.

2x gr. rit

N. 9. od
Für

Finale

brev. No. 10

Mod.

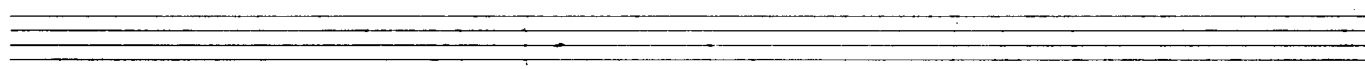
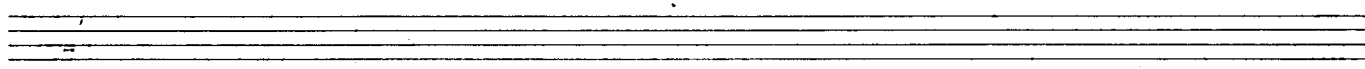
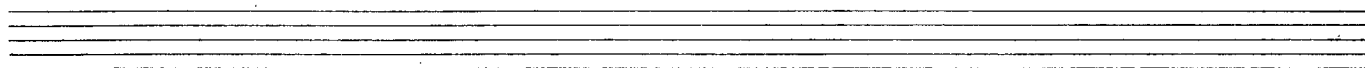
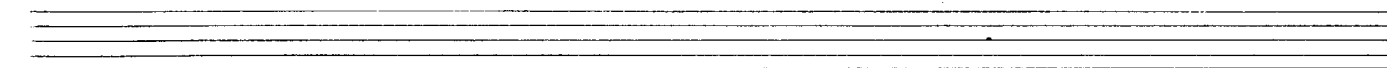
quell.

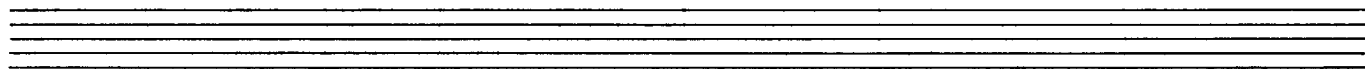
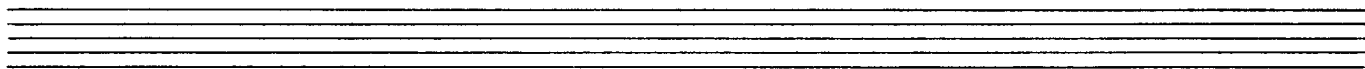
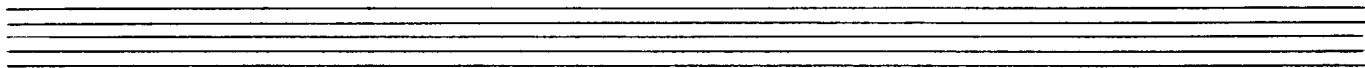
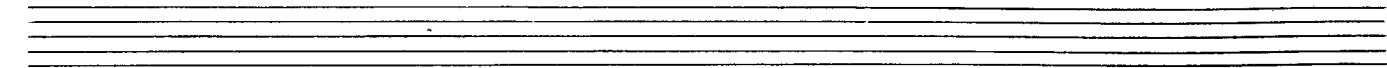
Handwritten musical notation for the first system. It consists of two staves. The upper staff is in treble clef and contains a melodic line with a slur over the first three measures, an accent (^) over the first note, and a fermata over the first measure. The lower staff is in bass clef and contains a bass line with a fermata over the first measure. The word "And." is written above the first measure of the upper staff.

Handwritten musical notation for the second system, similar to the first. It features two staves with a melodic line in the upper staff and a bass line in the lower staff. The upper staff has a slur and an accent over the first measure. The lower staff has a fermata over the first measure.

Handwritten musical notation for the third system. It consists of two staves. The upper staff has a melodic line with a slur and an accent over the first measure, and a fermata over the first measure. The lower staff has a bass line with a fermata over the first measure.

Handwritten musical notation for the fourth system. It consists of two staves. The upper staff has a melodic line with a slur and an accent over the first measure, and a fermata over the first measure. The lower staff has a bass line with a slur and an accent over the first measure, and a fermata over the first measure.





Handwritten musical notation for the first system. The treble clef staff contains a series of notes with accents (^) and slurs, including a triplet of eighth notes. The bass clef staff contains a series of notes with accents (^) and slurs, including a triplet of eighth notes.

Handwritten musical notation for the second system. The treble clef staff contains a series of notes with accents (^) and slurs, including a triplet of eighth notes. The bass clef staff contains a series of notes with accents (^) and slurs, including a triplet of eighth notes.

Handwritten musical notation for the third system. The treble clef staff contains a series of notes with accents (^) and slurs, including a triplet of eighth notes. The bass clef staff contains a series of notes with accents (^) and slurs, including a triplet of eighth notes.

Handwritten musical notation for the fourth system. The treble clef staff contains a series of notes with accents (^) and slurs, including a triplet of eighth notes. The bass clef staff contains a series of notes with accents (^) and slurs, including a triplet of eighth notes.

♩ CODA

Handwritten musical notation for the first system. The treble clef staff contains several chords with accents (^) and a sharp sign (#). The bass clef staff contains a series of notes, some with stems pointing down.

Handwritten musical notation for the second system. The treble clef staff features complex chords with flats (b) and accents (^). The bass clef staff has a melodic line with eighth notes and stems pointing down.

Handwritten musical notation for the third system. The treble clef staff contains chords with flats (b) and accents (^). The bass clef staff shows a rhythmic pattern with eighth notes and stems pointing down.

Handwritten musical notation for the fourth system. The treble clef staff has chords with flats (b) and accents (^). The bass clef staff contains notes and rests, with stems pointing down.

Handwritten musical notation for the first system, showing a treble and bass clef with various notes and rests.

Handwritten musical notation for the second system, including dynamic markings like "pp" and "p".

Handwritten musical notation for the third system, featuring a 4/4 time signature and the word "leuts".

Handwritten musical notation for the fourth system, including dynamic markings like "f" and "p".

gut + die

10a

Andly

Cresc.

du + auf -

appassionata

(ritornello)

accel.

breit

(poco rit)

Handwritten musical notation for the first system. The treble clef staff contains several measures with notes and accidentals, including a sharp sign. The bass clef staff contains notes with a flat sign. There are various accents and slurs above the notes.

Handwritten musical notation for the second system. The treble clef staff has notes with slurs and accents. The bass clef staff has notes with a flat sign and slurs.

rit + dim

Handwritten musical notation for the third system. The treble clef staff has notes with a sharp sign and a dynamic marking. The bass clef staff has notes with a flat sign and a dynamic marking. There are slurs and accents throughout.

CODA von 10a

rit.

Handwritten musical notation on a grand staff. The right hand part begins with a treble clef and a key signature of two sharps (F# and C#). The left hand part begins with a bass clef and a key signature of two sharps. The notation includes a double bar line in the right hand, followed by a melodic line with a slur and a fermata. The word "(fine)" is written above the right hand staff.

Handwritten musical notation on a grand staff. The right hand part continues with a melodic line under a slur. The left hand part has a bass line with a slur. The word "Dial" is written in the right hand, and "10/Mod." is written in the left hand. The system ends with a double bar line.

Handwritten musical notation on a grand staff. The right hand part starts with a treble clef and a key signature of two sharps. The left hand part starts with a bass clef and a key signature of two sharps. The notation includes a double bar line in the right hand, followed by a melodic line with a slur and a fermata. The word "v. 10." is written above the right hand staff.

Handwritten musical notation on a grand staff. The right hand part continues with a melodic line under a slur. The left hand part has a bass line with a slur. The word "Fine" is written in the right hand, and "Act 2" is written in the left hand. The system ends with a double bar line.

Ref. [3]

Allegro

No. 11.

Handwritten musical score system 1. It consists of two staves. The upper staff has a treble clef and contains several chords with accents (^) and slurs. The lower staff has a bass clef and contains a few notes with slurs. There are some handwritten annotations like a sharp sign (#) and a flat sign (b).

Handwritten musical score system 2. It consists of two staves. The upper staff has a treble clef and contains a series of chords with accents (^) and slurs. The lower staff has a bass clef and contains a series of notes with slurs. There are some handwritten annotations like a sharp sign (#) and a flat sign (b).

Handwritten musical score system 3. It consists of two staves. The upper staff has a treble clef and contains a series of chords with accents (^) and slurs. The lower staff has a bass clef and contains a series of notes with slurs. There are some handwritten annotations like a sharp sign (#) and a flat sign (b).

Handwritten musical score system 4. It consists of two staves. The upper staff has a treble clef and contains a series of chords with accents (^) and slurs. The lower staff has a bass clef and contains a series of notes with slurs. There are some handwritten annotations like a sharp sign (#) and a flat sign (b).

Presto

Handwritten musical notation for the first system. The treble clef staff contains a sequence of notes with accents (^) and sharps (#). The bass clef staff shows a few notes with accents (^) and some slanted lines indicating a continuation or a specific texture. The system concludes with a double bar line and repeat signs.

Handwritten musical notation for the second system, continuing the piece. It features similar melodic lines in the treble clef and accompaniment in the bass clef, with accents and sharps.

Handwritten musical notation for the third system. The treble clef staff shows a series of chords with a slur over them, and a '49' marking. The bass clef staff has a complex chordal structure with a '7B' marking and a 'b' (flat) symbol. The system ends with a double bar line and repeat signs.

Handwritten musical notation for the fourth system. The treble clef staff has a series of chords with sharps and accents. The bass clef staff has a '4/4' time signature and a few notes with accents (^). The system concludes with a double bar line and repeat signs.

Handwritten musical notation for the first system. The treble clef staff contains a sequence of notes with accents (^) and a sharp sign (#). The bass clef staff contains a few notes with accents (^) and rests.

Handwritten musical notation for the second system. The treble clef staff has a slur over a series of notes. The bass clef staff features a chord with a flat sign (b) and a vertical ellipsis.

Handwritten musical notation for the third system. The treble clef staff shows notes with accents (^) and slurs. The bass clef staff contains chords with a flat sign (b) and a vertical ellipsis.

Handwritten musical notation for the fourth system. The treble clef staff has notes with accents (^) and slurs. The bass clef staff contains chords with a flat sign (b) and a vertical ellipsis.

Handwritten musical notation for the first system. The treble staff contains a melodic line with eighth notes and rests, while the bass staff provides harmonic support with chords. A sharp sign is present in the first measure of both staves.

Handwritten musical notation for the second system. The treble staff features a melodic line with a slur over the final two measures. The bass staff contains chords with accents (^) above them. A sharp sign is visible in the first measure of the bass staff.

Handwritten musical notation for the third system. The treble staff has a melodic line with double bar lines and slurs. The bass staff contains chords with double bar lines and slurs. A flat sign is present in the first measure of the bass staff.

Handwritten musical notation for the fourth system. The treble staff has a melodic line with double bar lines and slurs. The bass staff contains chords with double bar lines and slurs. A flat sign is present in the first measure of the bass staff.

Handwritten musical score for the first system. It consists of two staves, treble and bass clef. The treble staff begins with a treble clef, a key signature of one sharp (F#), and a 4/4 time signature. The bass staff begins with a bass clef and a key signature of two sharps (F# and C#). The notation includes several measures with notes, rests, and dynamic markings such as accents (^) and a circled 'p'.

Handwritten musical score for the second system. It consists of two staves, treble and bass clef. The treble staff begins with a treble clef, a key signature of one sharp (F#), and a 4/4 time signature. The bass staff begins with a bass clef and a key signature of one sharp (F#). The notation includes several measures with notes, rests, and dynamic markings such as accents (^) and a circled 'p'. Below the staves, there are handwritten markings: a wedge-shaped dynamic marking followed by "dim" and another wedge-shaped dynamic marking followed by "pp".

Handwritten musical score for the third system. It consists of two staves, treble and bass clef. The treble staff begins with a treble clef, a key signature of one sharp (F#), and a 4/4 time signature. The bass staff begins with a bass clef and a key signature of one sharp (F#). The notation includes several measures with notes, rests, and dynamic markings such as accents (^) and a circled 'p'. Above the first measure, there is a handwritten marking "rit + dim".

Handwritten musical score for the fourth system. It consists of two staves, treble and bass clef. The treble staff begins with a treble clef, a key signature of one sharp (F#), and a 4/4 time signature. The bass staff begins with a bass clef and a key signature of one sharp (F#). The notation includes several measures with notes, rests, and dynamic markings such as accents (^) and a circled 'p'. Above the first measure, there is a handwritten marking "ruhig (frei)".

sehr ruhig

Handwritten musical notation for the first system. It consists of a treble clef staff and a bass clef staff. The time signature is 4/4, and there is a circled 'P' (piano) dynamic marking. The treble staff contains a sequence of notes: a whole note G4 with a sharp sign, followed by quarter notes A4, B4, and C5. The bass staff contains a whole note G3 with a sharp sign, followed by quarter notes A3, B3, and C4. There are horizontal lines above the treble staff and vertical lines below the bass staff, possibly indicating fingerings or breath marks. The system ends with a double bar line.

Handwritten musical notation for the second system. It consists of a treble clef staff and a bass clef staff. The treble staff begins with a circled 'P' dynamic marking. The treble staff contains a sequence of notes: a whole note G4 with a sharp sign, followed by quarter notes A4, B4, and C5, then a quarter note D5 with a sharp sign, and finally a quarter note E5 with a sharp sign. The bass staff contains a sequence of notes: a whole note G3 with a sharp sign, followed by quarter notes A3, B3, and C4. There are slurs and accents over the notes in both staves. The system ends with a double bar line.

Handwritten musical notation for the third system. It consists of a treble clef staff and a bass clef staff. The treble staff begins with a circled 'P' dynamic marking. The treble staff contains a sequence of notes: a whole note G4 with a sharp sign, followed by quarter notes A4, B4, and C5, then a quarter note D5 with a sharp sign, and finally a quarter note E5 with a sharp sign. The bass staff contains a sequence of notes: a whole note G3 with a sharp sign, followed by quarter notes A3, B3, and C4. There are slurs and accents over the notes in both staves. The system ends with a double bar line.

(poco rit)

Handwritten musical notation for the first system. The treble clef staff contains a series of notes with slurs and accents, including a triplet of eighth notes. The bass clef staff contains notes with slurs and accents. A dynamic marking 'f' is present. A circled '3/4' with a sharp sign is written above the bass staff.

Handwritten musical notation for the second system. The treble clef staff continues with notes and slurs. The bass clef staff contains notes with slurs and accents.

rit + dim

Handwritten musical notation for the third system. The treble clef staff has notes with slurs and accents. The bass clef staff has notes with slurs and accents. A dynamic marking 'rit + dim' is written above the treble staff.

(rit.)

Handwritten musical notation for the fourth system. The treble clef staff has notes with slurs and accents. The bass clef staff has notes with slurs and accents. A dynamic marking '(rit.)' is written above the treble staff. The system ends with a double bar line and a flourish.

gr. rit... dim...

Handwritten musical notation for the first system. It consists of two staves: a treble clef staff and a bass clef staff. The time signature is 4/4. The key signature has one sharp (F#). The notation includes quarter notes, eighth notes, and rests. There are dynamic markings 'pp' and 'p'. The system ends with a double bar line.

D.C.
Hct 3 al

Handwritten musical notation for the second system. It consists of two staves: a treble clef staff and a bass clef staff. The time signature is 4/4. The key signature has one sharp (F#). The notation includes eighth notes, quarter notes, and rests. There are dynamic markings 'pp' and 'p'. The system ends with a double bar line.

Handwritten musical notation for the third system. It consists of two staves: a treble clef staff and a bass clef staff. The time signature is 4/4. The key signature has one sharp (F#). The notation includes eighth notes, quarter notes, and rests. There are dynamic markings 'pp' and 'p'. The system ends with a double bar line.

N. 12

Allegretto (Andante)

rit.....

Handwritten musical notation for the first system. The treble staff contains four measures of chords, with some notes marked with accents and slurs. The bass staff contains a single note in the first measure, followed by a long horizontal line with a slur, and then a sequence of notes in the final two measures.

Handwritten musical notation for the second system. The treble staff contains four measures of chords, with some notes marked with accents and slurs. The bass staff contains a sequence of notes in the first two measures, followed by a long horizontal line with a slur, and then a few notes in the final two measures.

Handwritten musical notation for the third system. The treble staff contains four measures of chords, with some notes marked with accents and slurs. The bass staff contains a sequence of notes in the first two measures, followed by a long horizontal line with a slur, and then a few notes in the final two measures.

Handwritten musical notation for the first system. The treble clef part begins with a key signature of three flats (B-flat, E-flat, A-flat) and contains several chords and melodic fragments. The bass clef part features a series of notes with slurs and accents, including a prominent quarter note with an accent mark.

Handwritten musical notation for the second system. The treble clef part shows a sequence of chords with some accidentals and a fermata. The bass clef part continues with a melodic line, featuring a quarter note with an accent mark and a fermata.

Handwritten musical notation for the third system. The treble clef part contains several chords with accents and slurs. The bass clef part includes dynamic markings such as *f* and *ff*, along with chords and a fermata.

Handwritten musical notation for the fourth system. The treble clef part features a series of chords with slurs and accents. The bass clef part includes a double bar line and a flourish. The word "dim + rit..." is written above the treble clef staff.

rit.

lunga r.

13

Leute

6/4 (P) ruhig

ruhig

ruhig

Handwritten musical notation for the first system. It consists of two staves. The upper staff is in treble clef and contains a melodic line with notes D, D, Bb, Bb, D, D, and a triplet of D, D, D. The lower staff is in bass clef and contains a bass line with notes Bb, D, D, Bb, D, D. Dynamics include *f* and *rit.*. There are also slurs and accents.

Handwritten musical notation for the second system. It consists of two staves. The upper staff is in treble clef and contains a melodic line with notes G, G, A, A, B, B, and a triplet of B, B, B. The lower staff is in bass clef and contains a bass line with notes G, G, A, A, B, B. Dynamics include *pp*. There are also slurs and accents.

14

Mod.

Handwritten musical notation for the first system, measures 1-4. The system consists of two staves. The upper staff is in treble clef with a key signature of three flats (B-flat, E-flat, A-flat) and a common time signature. It contains a melodic line with a fermata over the first measure, followed by eighth notes in the second measure, and a triplet of eighth notes in the third and fourth measures. The lower staff is in bass clef with the same key signature and time signature, containing a bass line with quarter notes and rests. Dynamics include *mf* and *p*. A *f* dynamic is written above the first measure of the triplet in the upper staff.

Handwritten musical notation for the second system, measures 5-8. The system consists of two staves. The upper staff continues the melodic line with a fermata over the fifth measure, followed by eighth notes in the sixth measure, and a triplet of eighth notes in the seventh and eighth measures. The lower staff continues the bass line with quarter notes and rests. Dynamics include *f* and *p*. A *f* dynamic is written above the first measure of the triplet in the upper staff.

Handwritten musical notation for the third system, measures 9-12. The system consists of two staves. The upper staff continues the melodic line with a fermata over the ninth measure, followed by eighth notes in the tenth measure, and a triplet of eighth notes in the eleventh and twelfth measures. The lower staff continues the bass line with quarter notes and rests. Dynamics include *f* and *p*. A *f* dynamic is written above the first measure of the triplet in the upper staff.

appassionata (weit)

Handwritten musical score for the first system. It consists of two staves. The key signature has three flats (B-flat, E-flat, A-flat). The first measure is marked with a circled 'ff' (fortissimo). The music features several measures with accents (^) and dynamic markings. Time signatures include 4/4 and 3/4. The notation includes chords and some melodic lines.

(2+ poco rit) *breit*

Handwritten musical score for the second system. It consists of two staves. The key signature has three flats. The first measure is marked with a circled 'ff'. The music includes complex rhythmic patterns, including triplets and groups of four. There are dynamic markings like 'p' (piano) and 'ff' (fortissimo). Time signatures include 4/4 and 3/4. The notation includes chords and some melodic lines.

Handwritten musical score for the third system. It consists of two staves. The key signature has three flats. The first measure is marked with a circled 'p' (piano). The music features a melodic line with a slur over several notes. The notation includes chords and some melodic lines.

rit + dim

Handwritten musical score for the fourth system. It consists of two staves. The key signature has three flats. The first measure is marked with a circled 'p' (piano). The music includes a 'D.C.' (Da Capo) marking. The notation includes chords and some melodic lines.

Lento

Handwritten musical score for piano, showing a single system with treble and bass clefs. The music is in 4/4 time and features a melodic line in the treble and a supporting line in the bass. Dynamics include piano (p) and pianissimo (ppp). The piece concludes with a 'Fine' marking.

15

Valse Mod.

Handwritten musical notation for the first system. It consists of two staves. The left staff is in treble clef with a 3/4 time signature and a circled 'P' (piano) dynamic marking. The right staff is in bass clef. The music features a melody in the right hand with slurs and a bass line with quarter notes and rests.

Handwritten musical notation for the second system. It consists of two staves. The right hand has a melody with slurs and a circled 'f' (forte) dynamic marking. The left hand has a bass line with quarter notes and rests. A circled '21' is written in the bass staff, and the word 'cresc.' (crescendo) is written above the right hand.

Handwritten musical notation for the third system. It consists of two staves. The right hand has a melody with slurs and a circled 'f' (forte) dynamic marking. The left hand has a bass line with quarter notes and rests. A circled '21' is written in the bass staff.

Handwritten musical notation for the first system. The treble staff contains notes with accents and slurs, and a circled '7'. The bass staff contains notes with flats and a circled '7'.

Handwritten musical notation for the second system. The treble staff contains notes with slurs and accents. The bass staff contains notes with flats and slurs.

Handwritten musical notation for the third system. The treble staff contains notes with slurs and a circled '7'. The bass staff contains notes with slurs and a circled '7'.

Handwritten musical notation for the first system. It consists of a treble staff and a bass staff. The treble staff begins with a circled 'p' (piano) dynamic marking. The music includes a series of notes with accidentals (sharps and naturals) and rests, connected by a long slur. The bass staff contains a few notes with accidentals and rests.

Handwritten musical notation for the second system. It features a treble staff and a bass staff. The treble staff has a circled 'p' dynamic marking. Above the treble staff, the instruction "(2x poco rit)" is written. The system contains several measures of music with notes, rests, and slurs. The bass staff has notes with accidentals and rests.

Handwritten musical notation for the third system. It consists of a treble staff and a bass staff. The treble staff starts with a circled 'p' dynamic marking. The notation includes notes with accidentals, rests, and slurs. The bass staff has notes with accidentals and rests.

accel.

Handwritten musical notation for the first system. The treble staff contains notes with sharp signs and accents (^). The bass staff contains notes with sharp signs and accents (^). There are some scribbles and corrections in the notation.

(immer turbulenter)

Handwritten musical notation for the second system. The treble staff contains notes with sharp signs and accents (^). The bass staff contains notes with sharp signs and accents (^). There are some scribbles and corrections in the notation.

Handwritten musical notation for the third system. The treble staff contains notes with sharp signs and accents (^). The bass staff contains notes with sharp signs and accents (^). There are some scribbles and corrections in the notation.

Presto (schwingvoll)

Handwritten musical notation for the first system, measures 1-3. The music is in treble and bass clefs. The key signature has one sharp (F#). Measure 1 starts with a quarter note G4, followed by a quarter note A4, and a quarter note B4. Measure 2 contains a quarter note C5, a quarter note B4, and a quarter note A4. Measure 3 contains a quarter note G4, a quarter note F#4, and a quarter note E4. There are slurs over the first two notes of each measure and a fermata over the final note of each measure. The bass line consists of quarter notes: G2, F#2, E2, D2, C2, B1, A1, G1.

Handwritten musical notation for the second system, measures 4-6. Measure 4 contains a quarter note G4, a quarter note A4, and a quarter note B4. Measure 5 contains a quarter note C5, a quarter note B4, and a quarter note A4. Measure 6 contains a quarter note G4, a quarter note F#4, and a quarter note E4. There are slurs over the first two notes of each measure and a fermata over the final note of each measure. The bass line consists of quarter notes: G2, F#2, E2, D2, C2, B1, A1, G1.

Handwritten musical notation for the third system, measures 7-9. Measure 7 contains a quarter note G4, a quarter note A4, and a quarter note B4. Measure 8 contains a quarter note C5, a quarter note B4, and a quarter note A4. Measure 9 contains a quarter note G4, a quarter note F#4, and a quarter note E4. There are slurs over the first two notes of each measure and a fermata over the final note of each measure. The bass line consists of quarter notes: G2, F#2, E2, D2, C2, B1, A1, G1.

Handwritten musical notation for the fourth system, measures 10-12. Measure 10 contains a quarter note G4, a quarter note A4, and a quarter note B4. Measure 11 contains a quarter note C5, a quarter note B4, and a quarter note A4. Measure 12 contains a quarter note G4, a quarter note F#4, and a quarter note E4. There are slurs over the first two notes of each measure and a fermata over the final note of each measure. The bass line consists of quarter notes: G2, F#2, E2, D2, C2, B1, A1, G1.

Handwritten musical notation for the first system. The treble staff contains notes with accents (^) and slurs. The bass staff contains chords and a fermata. The key signature has one flat (B-flat).

Handwritten musical notation for the second system. The treble staff features complex chordal structures with many notes. The bass staff contains chords and dynamic markings like 'p' and 'f'.

Handwritten musical notation for the third system. The treble staff features a prominent trill. The bass staff contains chords and dynamic markings.

Handwritten musical notation for the fourth system. Above the staves, the instruction "ruhiger" is written on the left and "pr. mit..." on the right. The treble staff contains a melodic line with a slur. The bass staff contains chords and dynamic markings.

Handwritten musical notation for the first system, including a treble and bass clef, a key signature of three flats, and a 2/4 time signature. The text "(folgt No. 12) als Reminiszenz" and "(als No. 16)" is written across the staves.

17 Finale

sehr rasch

Handwritten musical notation for the second system, featuring a treble and bass clef, a key signature of three flats, and a 4/4 time signature. A circled "pp" dynamic marking is present. The instruction "sempre cresc. <" is written in the right hand.

Handwritten musical notation for the third system, showing a treble and bass clef, a key signature of three flats, and a 4/4 time signature. The notation includes complex chordal textures and dynamic markings.

Handwritten musical notation for the fourth system, featuring a treble and bass clef, a key signature of three flats, and a 4/4 time signature. The notation includes complex chordal textures and dynamic markings.

Handwritten musical score system 1. It consists of two staves. The upper staff is in treble clef and contains several chords with accents (^) above them. The lower staff is in bass clef and contains a few notes with accents (^) above them. A 4/4 time signature is written in the lower staff. There are some scribbles at the beginning of the system.

Handwritten musical score system 2. It consists of two staves. The upper staff is in treble clef and contains chords with accents (^) above them. The lower staff is in bass clef and contains a sequence of notes with accents (^) above them. A 4/4 time signature is written in the lower staff.

Handwritten musical score system 3. It consists of two staves. The upper staff is in treble clef and contains a sequence of notes with accents (^) above them. The lower staff is in bass clef and contains a sequence of notes with accents (^) above them.

Handwritten musical score system 4. It consists of two staves. The upper staff is in treble clef and contains a sequence of notes with accents (^) above them. The lower staff is in bass clef and contains a sequence of notes with accents (^) above them.

Handwritten musical notation for the first system, featuring a treble clef and a key signature of one sharp (F#). The right hand has a series of chords with accents (^) and slurs. The left hand has a few notes with accents.

(2 + ev. mit - - - - -)

Handwritten musical notation for the second system. The right hand has a circled **ff** dynamic marking and a series of sixteenth notes with accents (^). The left hand has a few notes with accents (^). The system ends with a double bar line and a repeat sign.

sehr breit (appassionato)

Handwritten musical notation for the third system. The right hand has two triplets (3) and a "vorauswärts" annotation above a chord with an accent (^). The left hand has a few notes with accents (^).